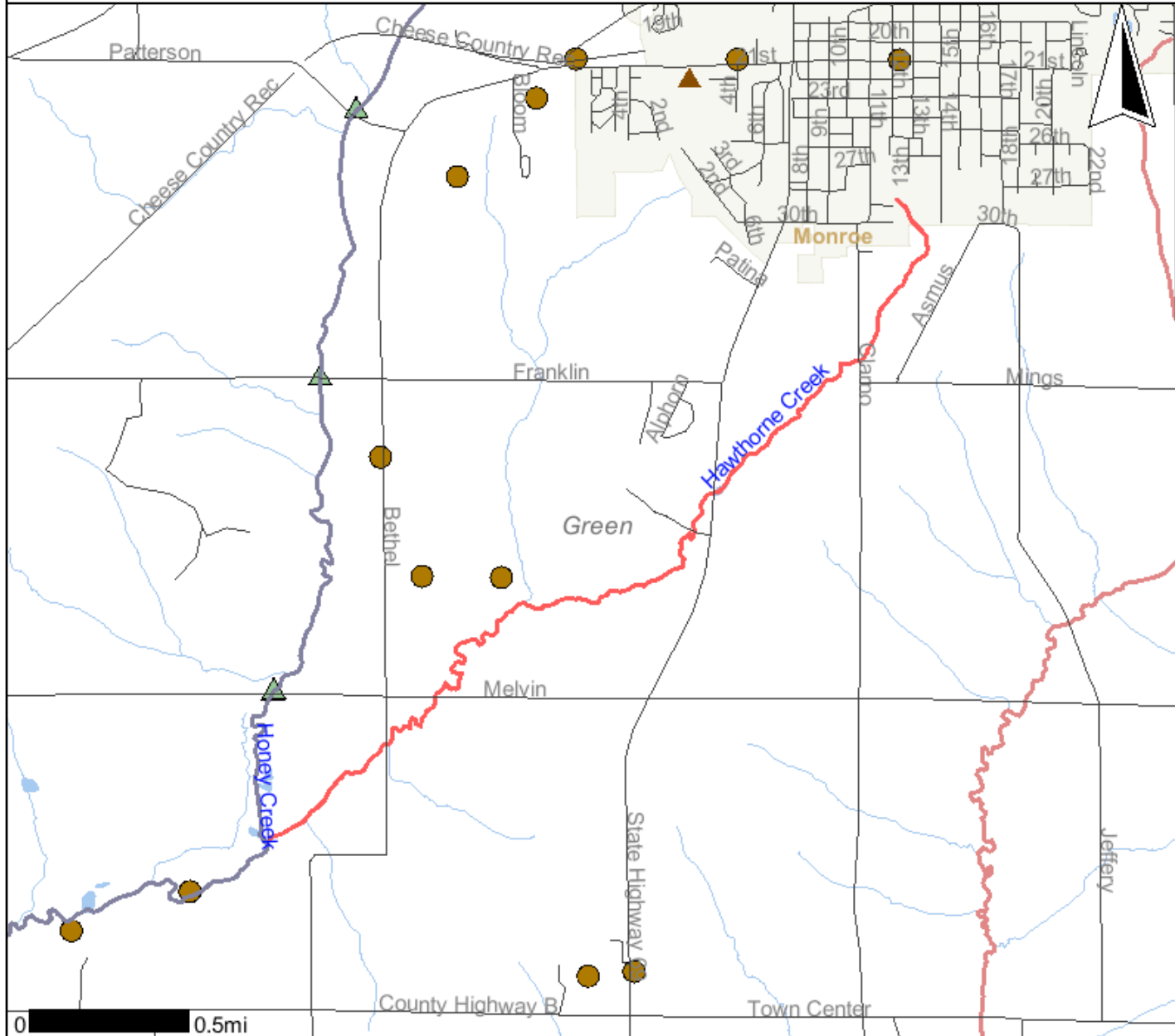


Hawthorne & Honey Creek 303d area

Legend



- USGS Gage Stations**
 - Active
 - Inactive
- Outfall Points**
- Local Roads**
- WADRS FAL Attainable Use Lines**
 - Class I Trout
 - Class II Trout
 - Class III Trout
 - Cold
 - WWSF
 - WWFF
 - LFF
 - LAL
 - Unknown or not assessed
- WADRS FAL Attainable Use Areas**
 - Class I Trout
 - Class II Trout
 - Class III Trout
 - Cold
 - WWSF
 - WWFF
 - LFF
 - LAL
 - Unknown or not assessed
- Chapter 30 Permits**
- SWIMS Monitoring Station Points**
 - Inactive Obsolete
 - New Pending
 - Inactive Pending
 - FHDB Pending
 - Active
 - Station with historic data
 - Station with recent data
- Rivers and Streams**
- 24K Open Water**
- County Boundary**
- Municipalities**
 - Village
 - City
- 24K State Boundary**

Scale: 1:31,962

DO NOT USE FOR NAVIGATION