

ORIGINAL

2301 N. THIRD STREET WAUSAU, WISCONSIN 54403 715/848-2976



FILED
SECRETARY OF THE
COMMISSION
2009 Dec 2
2009 DEC -2 A 11:45
November 30, 2009
800 004 0358 3848
FEDERAL ENERGY
REGULATORY COMMISSION

CERTIFIED MAIL: 7005 1820 0004 0358 3848

The Secretary
Federal Energy Regulatory Commission
888 First Street, NE
Washington, D.C. 20426

RE: **WVIC Project 2113, Purple Loosestrife Control Plan – 2009 Annual Monitoring Report**

In accordance with the Federal Energy Regulatory Commission (FERC) “Order Amending Purple Loosestrife Control Plan” issued June 16, 2009, Wisconsin Valley Improvement Company (WVIC) herewith submits an original and eight copies of the Purple Loosestrife Control Plan - 2009 Annual Monitoring Report (Attachment 1).

WVIC consulted with the Wisconsin DNR (DNR) and U.S. Fish and Wildlife Service (USFWS) June 26, 2009 to discuss the purple loosestrife monitoring approach for 2009 (Attachment 2). The DNR and WVIC concurred that the presence of recently well-established *Galerucella sp.* beetle populations in close vicinity to the three WVIC reservoirs suggests their migration to and occurrence in the reservoirs is likely. For 2009 DNR and WVIC therefore agreed to forego chemical application at any of the reservoirs and allow biological controls an opportunity to inhabit the areas. The exceptions would be the occurrence of loosestrife in any areas outside of the historical areas where loosestrife has been previously documented. In such cases, the loosestrife would be chemically treated to prevent further distribution. The USFWS supported biological controls and the reduction in use of chemical control.

WVIC submitted the annual monitoring results and the proposed monitoring plan for 2010 to the DNR and USFWS for review and comment on October 21, 2009 (Attachment 3) as required in the June 16 FERC Order. WVIC did not receive any comments from the resource agencies by the end of the 30-day comment period. Therefore the Final Report herewith submitted is unchanged from the Draft Report sent to the agencies.

Sincerely,

David M. Coon, Director
Environmental Affairs

Enclosures:

- Attachment 1: WVIC 2009 Annual Monitoring Report - Purple Loosestrife Control Plan
- Attachment 2: Pre-monitoring consultation correspondence with DNR and USFWS
- Attachment 3: WVIC submittal of 2009 Annual Monitoring Report to DNR and USFWS

Cc: Pat Grant, Environmental Protection Specialist, FERC, Room 3130, 230 South Dearborn Street,
Chicago, IL 60604

Attachment 1

Wisconsin Valley Improvement Company

**Purple Loosestrife Annual Monitoring
Report – 2009**

November 30, 2009

Wisconsin Valley Improvement Company
Purple Loosestrife Annual Monitoring Report – 2009
November 30, 2009

Background

WVIC began using chemical control as a method for controlling purple loosestrife in 1996. Initially, a pilot study was conducted on Rice Reservoir where loosestrife was already established and abundant in some areas. The primary purpose of the pilot study was to test the effectiveness of Rodeo® herbicide (glyphosate) on loosestrife beds containing different densities of plants. The chemical control program was expanded in 1997 to include Willow and Spirit reservoirs. WVIC initiated two sprayings per growing season in 2002 after observing a second crop of flowering loosestrife three to four weeks after the initial spraying. WVIC continued this spraying strategy through 2008. Although this approach was effective in further reducing the density of loosestrife it did not result in eradication.

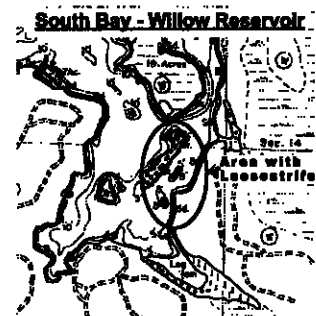
In compliance with WVIC's 1996 FERC license, the purple loosestrife control program became a part of WVIC's FERC approved 1997 Fish and Wildlife Management Plan (Article 413). The Fish and Wildlife Management Plan was updated in 2001 and 2006 in accordance with a five-year update requirement in WVIC's FERC license. WVIC drafted a Modified Purple Loosestrife Control Plan in November 2008. The purpose of the Modified Plan was to terminate and/or phase out chemical control of loosestrife and implement biological control with *Galerucella sp.* beetles. The Plan was sent to Wisconsin DNR (DNR) and US Fish and Wildlife Service (USFWS) for review and comment. Comments were received by the DNR and incorporated into the Plan. The Plan was sent to FERC November 26, 2008 as an amendment request to WVIC's Fish and Wildlife Management Plan. FERC issued an Order Amending the Plan June 16, 2009 and approved the Plan with minor reporting modifications.

The Plan required WVIC to consult with the DNR and USFWS to determine the initial monitoring plan for 2009. WVIC held a conference call with DNR on June 26, 2009. WVIC and DNR agreed that the presence of recently well-established beetle populations in close vicinity to the three reservoirs that were being chemically treated (Willow, Rice and Spirit) suggests their migration to and occurrence in these reservoirs is likely. For 2009 DNR and WVIC agreed to forego any chemical application at any of the reservoirs and allow biological controls an opportunity to inhabit the areas. WVIC would survey Willow, Rice & Spirit for purple loosestrife and any *Galerucella sp.* beetles and record loosestrife distribution and density with GPS as stipulated in the Plan and June 16, 2009 FERC Order. WVIC contacted USFWS via email also on June 26 to inform them of WVIC and DNR's proposed monitoring for 2009. USFWS responded via email expressing concurrence with the reduction of chemical controls and use of biological controls. USFWS did not provide any subsequent comments.

2009 Field Monitoring Results

Willow Reservoir - On July 28, 2009 WVIC attempted to survey purple loosestrife on Willow Reservoir. The reservoir elevation was 1520.80 ft. NGVD (8.55 ft. below full) due to continued drought conditions. This low water condition, which persisted through the summer, prevented access to the island area by boat. Due to the un-solidified muck consistency of the exposed reservoir bottom, the area could not be safely accessed on foot. These conditions prevented purple loosestrife monitoring in 2009.

Spirit Reservoir - On July 28, 2009 WVIC monitored the portion of Spirit Reservoir where loosestrife previously occurred. The reservoir elevation was



WVIC Purple Loosestrife Annual Monitoring Report - 2009

1432.54 ft. NGVD (5.34 ft. below full) which made access by boat difficult so a combination boat and foot survey was used. Both immature and mature plants were counted. GPS readings were taken every 100' where plants were observed and loosestrife abundance was recorded as A (1-5 plants), B (6-50 plants), or C (51+ plants). Figure 1 is a distribution map of the recorded locations and Table 1 lists the GPS coordinates for each observation. Figure 2 and Table 2 show loosestrife distribution and recorded locations in 2007 for comparative purposes. *Galerucella sp.* beetles were not observed at Spirit Reservoir in 2009, although a low density of beetles had been observed in 2008. The reason for their absence in 2009 is unknown.

The distribution of loosestrife between 2007 (last year of chemical treatment) and 2009 was similar. Relative abundance of dense loosestrife beds (50+ plants) declined in 2009 with only one dense bed observed compared to four dense beds in 2007. The factors leading to the decline in relative abundance in 2009 are uncertain, but may be related to the impact of beetles observed in 2008 and/or well below normal seasonal temperatures during the early and mid-growing seasons possibly inhibiting young plant germination and growth. Reservoir water levels did not appear to be a factor since water levels were similar during the growing seasons between the years.

Rice Reservoir – On July 29 and July 31, 2009 WVIC monitored the portions of Rice Reservoir where loosestrife previously occurred. The reservoir elevation was 1458.77 ft. NGVD (4.48 ft. below full). The general areas were accessed by boat although most areas were surveyed by walking the exposed shoreline and counting both immature and mature plants. GPS readings were taken as described above.

Galerucella sp. beetles now inhabit Rice Reservoir at two confirmed locations and likely two additional locations. Figure 3 is a distribution map of the recorded locations and shows two areas where *Galerucella sp.* beetles were observed and two additional areas where leaf and stem damage characteristic of *Galerucella sp.* beetles was observed, although no beetles were present. Table 3 lists the GPS coordinates for the observations. Figure 4 and Table 4 show loosestrife distribution and recorded locations in 2008 for comparative purposes.

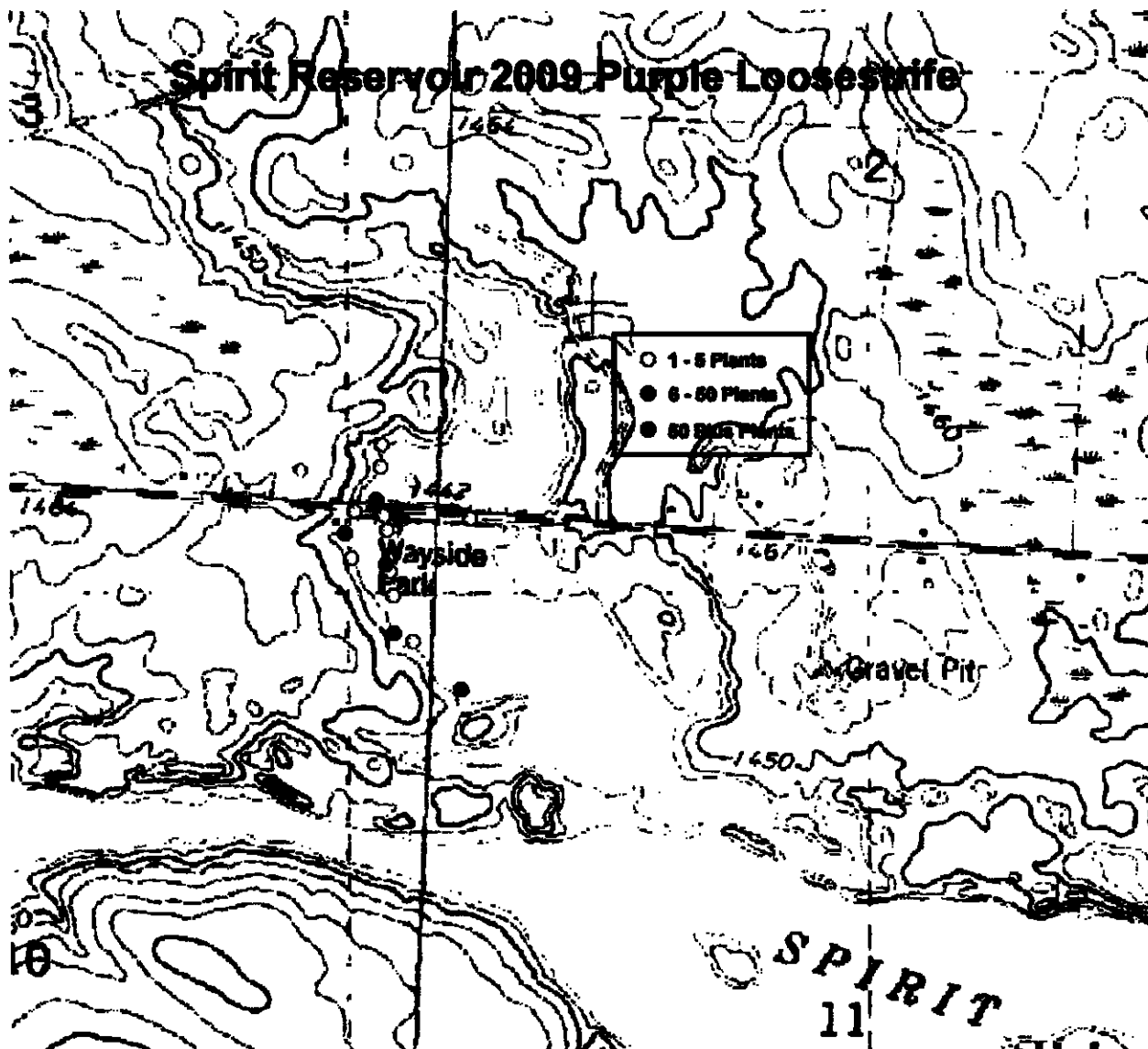
The distribution of loosestrife between 2008 (last year of chemical treatment) and 2009 was similar. Relative abundance of dense loosestrife beds (50+ plants), however, declined in 2009 compared to 2008. Similar to Spirit Reservoir, the factors leading to the decline in relative abundance are uncertain, but again may be related to well below normal seasonal temperatures during the early and mid-growing seasons. Another factor that may account for fewer dense loosestrife beds in 2009 may be attributed to spraying plants with Rodeo® in 2008 (last year of chemical application). Reservoir water levels during the growing seasons did not appear to be a factor since water levels were similar in June between years and approximately 1 ft lower during July in 2009. The lower water level would tend to favor additional plant germination which was not apparent.

Proposed Purple Loosestrife and Beetle Monitoring Plan for 2010

The results from 2009 did not indicate any increase in distribution or abundance of purple loosestrife between 2007 at Spirit and 2008 at Rice (chemical treatment years) to 2009 (non-treatment). WVIC therefore proposes to repeat the same monitoring survey at all three reservoirs (Willow, Rice and Spirit) during late-July or early-August in 2010 to document loosestrife distribution and abundance along with documenting any continued immigration and distribution of *Galerucella sp.* beetles. As in 2009, WVIC is not proposing any chemical application/spraying of Rodeo® herbicide in 2010. In compliance with the June 16, 2009 FERC Order, WVIC will submit a 2010 purple loosestrife monitoring report in October 2010 to the Wisconsin DNR and USFWS for review and comment and to determine the monitoring approach for 2011.

WWIC Purple Loosestrife Annual Monitoring Report - 2009

Figure 1



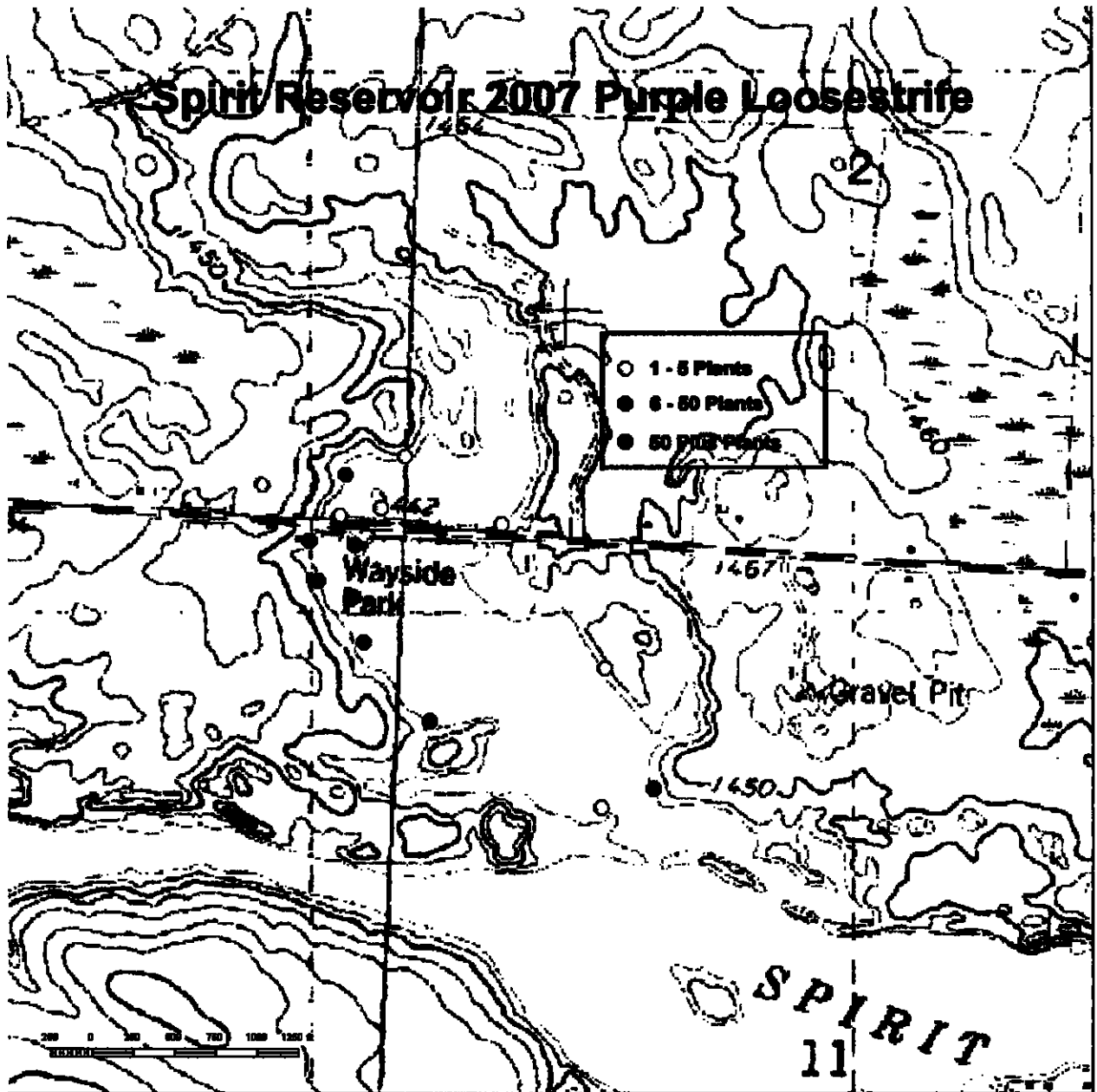
WVIC Purple Loosestrife Annual Monitoring Report - 2009

Table 1

Purple Loosestrife Survey – 2009				
Spirit Reservoir				
Number	Latitude	Longitude	Amount	Beetle Activity
1	45° 27.20888	89° 50.29293	1-5 Plants	
2	45° 27.21615	89° 50.29852	6-50 Plants	
3	45° 27.13707	89° 50.25444	1-5 Plants	
4	45° 27.08985	89° 50.18168	6-50 Plants	
5	45° 27.1459	89° 50.28373	6-50 Plants	
6	45° 27.18376	89° 50.28589	1-5 Plants	
7	45° 27.26993	89° 50.34809	1-5 Plants	
8	45° 27.22132	89° 50.3501	1-5 Plants	
9	45° 27.24721	89° 50.3599	50+ Plants	
10	45° 27.27261	89° 50.31466	1-5 Plants	
11	45° 27.26722	89° 50.30407	1-5 Plants	
12	45° 27.25195	89° 50.29841	1-5 Plants	
13	45° 27.26517	89° 50.28129	6-50 Plants	
14	45° 27.28296	89° 50.3154	6-50 Plants	
15	45° 27.31752	89° 50.31169	1-5 Plants	
16	45° 27.34052	89° 50.31044	1-5 Plants	
17	45° 27.26647	89° 50.17743	1-5 Plants	

WWIC Purple Loosestrife Annual Monitoring Report - 2009

Figure 2



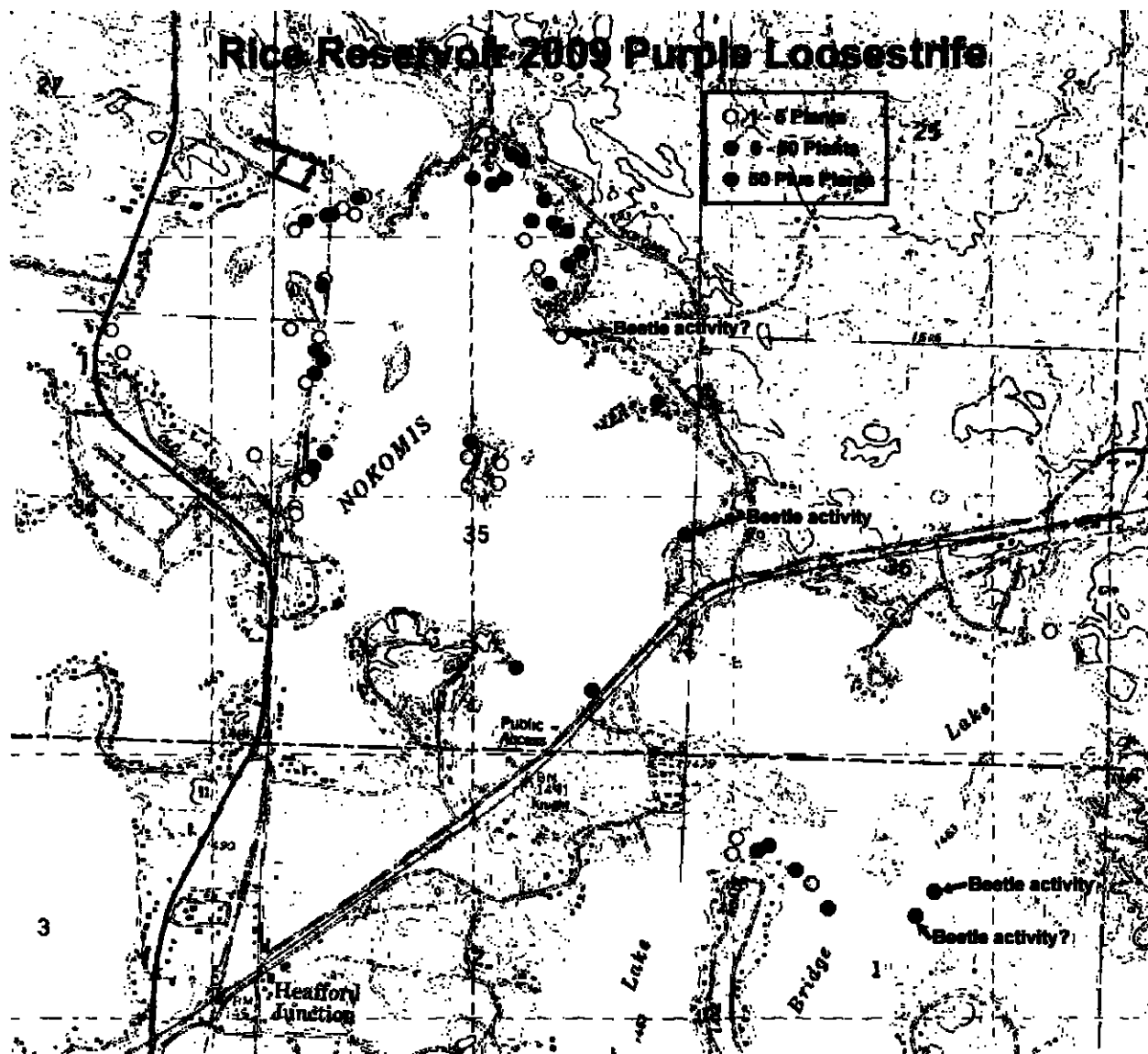
WVIC Purple Loosestrife Annual Monitoring Report - 2009

Table 2

Purple Loosestrife Survey - 2007						
Spirit Reservoir						
Number	Latitude		Longitude		Amount	Beetle Activity
1	45°	27.27970	89°	50.08852	1-5 Plants	
2	45°	27.34483	89°	50.22761	1-5 Plants	
3	45°	27.32449	89°	50.31120	6-50 Plants	
4	45°	27.29202	89°	50.25968	1-5 Plants	
5	45°	27.28307	89°	50.31812	1-5 Plants	
6	45°	27.25736	89°	50.35939	50+ Plants	
7	45°	27.21760	89°	50.34568	50+ Plants	
8	45°	27.25498	89°	50.29480	50+ Plants	
9	45°	27.20068	89°	50.29859	6-50 Plants	
10	45°	27.15792	89°	50.27695	6-50 Plants	
11	45°	27.08172	89°	50.18104	50+ Plants	
12	45°	27.14018	89°	49.93648	1-5 Plants	
13	45°	27.00171	89°	49.93415	1-5 Plants	
14	45°	27.02241	89°	49.86152	6-50 Plants	

WWIC Purple Loosestrife Annual Monitoring Report - 2009

Figure 3



WVIC Purple Loosestrife Annual Monitoring Report - 2009

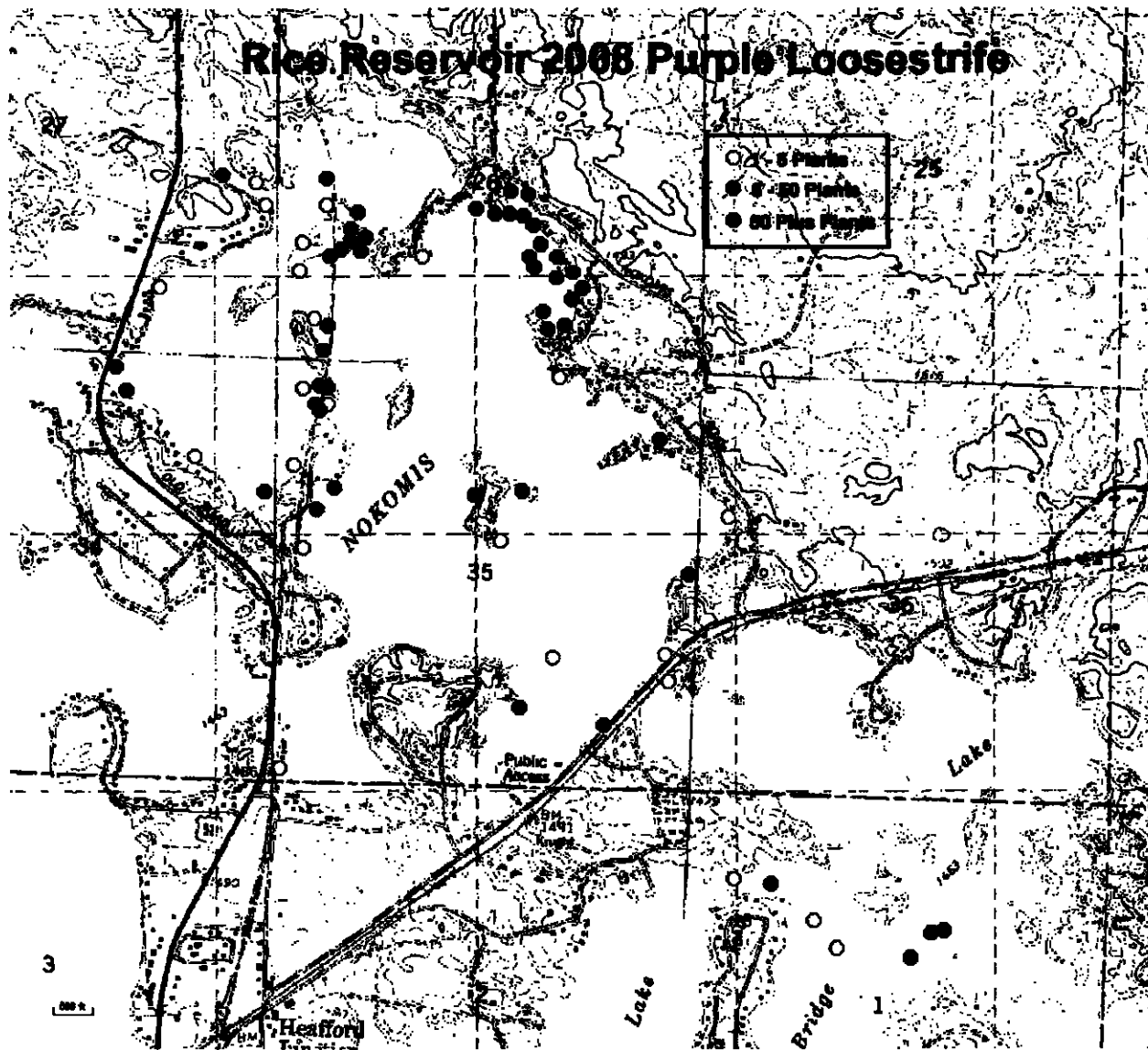
Table 3

Purple Loosestrife Survey – 2009				
Rice Reservoir				
Number	Latitude	Longitude	Amount	Beetle Activity
1	45° 33.47112	89° 41.86095	6-50 Plants	
2	45° 33.80077	89° 41.59862	50+ Plants	Yes
3	45° 34.07584	89° 41.69658	6-50 Plants	
4	45° 34.20450	89° 41.98566	1-5 Plants	Possible
5	45° 34.35339	89° 41.97056	50+ Plants	
6	45° 34.34457	89° 42.06066	1-5 Plants	
7	45° 34.31368	89° 42.02423	50+ Plants	
8	45° 34.42366	89° 41.97731	50+ Plants	
9	45° 34.38061	89° 41.93334	50+ Plants	
10	45° 34.44266	89° 42.08222	50+ Plants	
11	45° 34.40063	89° 42.10173	1-5 Plants	
12	45° 34.43986	89° 42.01905	50+ Plants	
13	45° 34.48515	89° 42.04894	50+ Plants	
14	45° 34.56938	89° 42.11718	50+ Plants	
15	45° 34.58035	89° 42.14758	50+ Plants	
16	45° 34.52798	89° 42.16641	50+ Plants	
17	45° 34.51478	89° 42.20253	50+ Plants	
18	45° 34.52770	89° 42.26196	50+ Plants	
19	45° 34.48145	89° 42.58035	1-5 Plants	
20	45° 34.47735	89° 42.59771	6-50 Plants	
21	45° 34.45447	89° 42.64319	1-5 Plants	
22	45° 34.44041	89° 42.67299	6-50 Plants	
23	45° 34.44184	89° 42.60618	1-5 Plants	
24	45° 34.43800	89° 42.68964	6-50 Plants	
25	45° 34.42615	89° 42.75028	6-50 Plants	
26	45° 34.40574	89° 42.78291	1-5 Plants	
27	45° 33.93657	89° 42.87845	1-5 Plants	
28	45° 34.08966	89° 42.73539	1-5 Plants	
29	45° 34.19975	89° 42.78605	1-5 Plants	
30	45° 34.30683	89° 42.68843	1-5 Plants	
31	45° 34.29428	89° 42.69310	6-50 Plants	
32	45° 34.11023	89° 42.70998	6-50 Plants	
33	45° 34.15771	89° 42.70859	6-50 Plants	
34	45° 34.18495	89° 42.70149	1-5 Plants	
35	45° 34.13896	89° 42.68797	6-50 Plants	
36	45° 33.94714	89° 42.67050	6-50 Plants	
37	45° 33.91580	89° 42.70478	6-50 Plants	
38	45° 33.89738	89° 42.71303	6-50 Plants	
39	45° 33.94460	89° 42.25097	1-5 Plants	
40	45° 33.97767	89° 42.24270	6-50 Plants	

WVIC Purple Loosestrife Annual Monitoring Report - 2009

Purple Loosestrife Survey – 2009						
Rice Reservoir – cont.						
Number	Latitude		Longitude		Amount	Beetle Activity
41	45°	33.93394	89°	42.14959	1-5 Plants	
42	45°	33.89259	89°	42.15851	1-5 Plants	
43	45°	33.62608	89°	40.51823	1-5 Plants	
44	45°	33.07886	89°	40.83384	50+ Plants	Yes
45	45°	33.02611	89°	40.88512	50+ Plants	Possible
46	45°	33.51253	89°	42.08772	6-50 Plants	
47	45°	33.14210	89°	41.43347	1-5 Plants	
48	45°	33.14971	89°	41.36131	6-50 Plants	
49	45°	33.16180	89°	41.32571	6-50 Plants	
50	45°	33.11344	89°	41.24566	6-50 Plants	
51	45°	33.17507	89°	41.42218	1-5 Plants	
52	45°	34.18566	89°	43.31459	1-5 Plants	
53	45°	34.13931	89°	43.27763	1-5 Plants	
54	45°	33.88922	89°	42.72716	1-5 Plants	
55	45°	33.82993	89°	42.75359	1-5 Plants	
56	45°	33.81549	89°	42.75049	1-5 Plants	
57	45°	33.08670	89°	41.19757	1-5 Plants	
58	45°	33.03905	89°	41.14624	6-50 Plants	

Figure 4



WVIC Purple Loosestrife Annual Monitoring Report - 2009

Table 4

Purple Loosestrife Survey - 2008						
Rice Reservoir						
Number	Latitude		Longitude		Amount	Beetle Activity
1	45°	33.03330	89°	41.12581	1-5 Plants	
2	45°	33.08670	89°	41.19757	1-5 Plants	
3	45°	33.16814	89°	41.44148	1-5 Plants	
4	45°	33.91774	89°	41.49029	1-5 Plants	
5	45°	34.19736	89°	41.99932	1-5 Plants	
6	45°	34.44148	89°	42.41901	1-5 Plants	
7	45°	34.40311	89°	42.78011	1-5 Plants	
8	45°	34.46271	89°	42.77187	1-5 Plants	
9	45°	34.54154	89°	42.70454	1-5 Plants	
10	45°	34.53848	89°	42.88522	1-5 Plants	
11	45°	34.58342	89°	42.91431	1-5 Plants	
12	45°	34.35952	89°	43.19135	1-5 Plants	
13	45°	34.00808	89°	43.07176	1-5 Plants	
14	45°	33.99721	89°	42.77947	1-5 Plants	
15	45°	34.15900	89°	42.75810	1-5 Plants	
16	45°	34.30504	89°	42.73311	1-5 Plants	
17	45°	34.12771	89°	42.68253	1-5 Plants	
18	45°	33.82517	89°	42.74357	1-5 Plants	
19	45°	33.36549	89°	42.79218	1-5 Plants	
20	45°	33.85196	89°	42.16057	1-5 Plants	
21	45°	33.61499	89°	41.99548	1-5 Plants	
22	45°	33.62801	89°	41.66168	1-5 Plants	
23	45°	33.57342	89°	41.65215	1-5 Plants	
24	45°	33.15935	89°	41.32729	6-50 Plants	
25	45°	34.07498	89°	41.69836	6-50 Plants	
26	45°	34.33407	89°	42.05618	6-50 Plants	
27	45°	34.41916	89°	41.97237	6-50 Plants	
28	45°	34.40645	89°	42.01869	6-50 Plants	
29	45°	34.44714	89°	42.10237	6-50 Plants	
30	45°	34.47383	89°	42.06982	6-50 Plants	
31	45°	34.51333	89°	42.08961	6-50 Plants	
32	45°	34.44827	89°	42.59950	6-50 Plants	
33	45°	34.49450	89°	42.63115	6-50 Plants	
34	45°	34.52887	89°	42.61108	6-50 Plants	
35	45°	34.59601	89°	43.01239	6-50 Plants	
36	45°	34.19108	89°	43.31318	6-50 Plants	
37	45°	34.14190	89°	43.28082	6-50 Plants	
38	45°	33.93858	89°	42.86044	6-50 Plants	
39	45°	34.12668	89°	42.72056	6-50 Plants	
40	45°	34.29238	89°	42.69216	6-50 Plants	

WVIC Purple Loosestrife Annual Monitoring Report - 2009

Purple Loosestrife Survey - 2008						
Rice Reservoir - cont.						
Number	Latitude		Longitude		Amount	Beetle Activity
41	45°	34.23988	89°	42.70234	6-50 Plants	
42	45°	33.95296	89°	42.65550	6-50 Plants	
43	45°	33.95874	89°	42.09880	6-50 Plants	
44	45°	33.94564	89°	42.24119	6-50 Plants	
45	45°	33.47681	89°	41.83820	6-50 Plants	
46	45°	33.06945	89°	40.84909	50+ Plants	
47	45°	33.01868	89°	40.90702	50+ Plants	
48	45°	33.07386	89°	40.81086	50+ Plants	
49	45°	34.29893	89°	42.04037	50+ Plants	
50	45°	34.30790	89°	41.98947	50+ Plants	
51	45°	34.36260	89°	41.97157	50+ Plants	
52	45°	34.38756	89°	41.94373	50+ Plants	
53	45°	34.42756	89°	42.08528	50+ Plants	
54	45°	34.45056	89°	42.02064	50+ Plants	
55	45°	34.53256	89°	42.12153	50+ Plants	
56	45°	34.57727	89°	42.10926	50+ Plants	
57	45°	34.58331	89°	42.16184	50+ Plants	
58	45°	34.53519	89°	42.16202	50+ Plants	
59	45°	34.53431	89°	42.20505	50+ Plants	
60	45°	34.54392	89°	42.26109	50+ Plants	
61	45°	34.47774	89°	42.58631	50+ Plants	
62	45°	34.46990	89°	42.62943	50+ Plants	
63	45°	34.45175	89°	42.65777	50+ Plants	
64	45°	34.43520	89°	42.69086	50+ Plants	
65	45°	34.59716	89°	42.70510	50+ Plants	
66	45°	34.16464	89°	42.71098	50+ Plants	
67	45°	34.16147	89°	42.68421	50+ Plants	
68	45°	34.11474	89°	42.70843	50+ Plants	
69	45°	33.90679	89°	42.70656	50+ Plants	
70	45°	33.50883	89°	42.08848	50+ Plants	
71	45°	33.79591	89°	41.60044	50+ Plants	

Attachment 2

**Pre-Monitoring Consultation
with
Wisconsin DNR and USFWS**

Wisconsin Valley Improvement Company
TELEPHONE MEMORANDUM

Subject:	Purple Loosestrife Control Plan	WVIC File:	ENV02.0702
To::	Kevin Gauthier & Kyle McLaughlin, DNR, Nick Utrup, USFWS	Date:	June 26, 2009
Recorded by:	D.Coon	Time:	P.M.

Background: WVIC drafted a Modified Purple Loosestrife Control Plan in November 2008. The purpose of the Modified Plan was to terminate and/or phase out chemical control of loosestrife and implement biological control with *Galerucella sp.* beetles. The Plan was sent to Wisconsin DNR and USFWS for review and comment. Comments were received by the DNR and incorporated into the Plan. The Plan was sent to FERC November 26, 2008 as an amendment request to WVIC's Fish and Wildlife Management Plan. FERC issued an Order Amending the Plan June 16, 2009 and approved the Plan with minor reporting modifications.

The Plan required WVIC to consult with the DNR and USFWS to determine the initial monitoring plan for 2009. WVIC held a conference call with DNR on June 26 and contacted USFWS also on June 26 via email.

Outcome: WVIC held a conference call with Kevin Gauthier, DNR Water Resources Management Specialist, and Kyle McLaughlin, DNR Rhinelander office to discuss the purple loosestrife monitoring plan for 2009.

WVIC and DNR concurred that the presence of recently well-established beetle populations in close vicinity to the three WVIC reservoirs suggests their migration to and occurrence in the reservoirs is likely. For 2009 DNR and WVIC agreed to forego chemical application at any of the reservoirs and allow biological controls an opportunity to inhabit the areas. The exception would be the occurrence of loosestrife in any areas outside of the historical areas where loosestrife has been previously documented. WVIC will record any new observations during its loosestrife monitoring at the three reservoirs. WVIC will also investigate reports from the DNR, reservoir riparians and other recreationists of any new sitings. This has been standard practice since implementation of the loosestrife control program in 1996. If any pioneer stands of loosestrife (≤ 6 plants) are found or reported outside of the historical areas at the three reservoirs, they will be treated with Rodeo to help prevent any further distribution.

DNR commented that it does not have any clear guidelines for determining under what circumstances to introduce beetles or the number of beetles, should this be necessary. They recommended that introduction of beetles could be considered after reviewing the annual monitoring results. They believe that WVIC's continued efforts in monitoring loosestrife distribution and abundance and the frequency of occurrence and distribution of loosestrife feeding beetles would provide valuable information for developing guidelines for the future, especially for reservoir environments. WVIC's monitoring in 2009 will be in accordance with the tasks listed in the June 16, 2009 FERC approved Purple Loosestrife Control Plan. This includes documenting the distribution and abundance of loosestrife and the distribution of loosestrife feeding beetles. If introduction of beetles to any of the reservoirs is deemed necessary, WVIC will maintain records of the release sites and the number of beetles released.

Mr. Nick Utrup, USFWS responded via email on June 26 that he will review the Modified Purple Loosestrife Control Plan and the June 16, 2009 FERC Order. He said that at this time he sees no

reason for us to meet but will review the documents and contact me if he has any comments. Nick stated that he appreciates reduction in the use of chemical treatments and is encouraged by the use of biological controls on loosestrife. No additional comments were received from Nick.

WVIC agreed to submit the 2009 monitoring results to the DNR and USFWS by October 2009 for review and then meet, if deemed necessary by the agencies, to discuss the results. Based on the results, WVIC, DNR and USFWS will develop a monitoring plan and a plan for any beetle releases, if necessary, for 2010.

File: WVIC Main/Environmental/Macrophytes/Loosestrife: Telememo-DNR-USFWS-062609.doc

Dave Coon

From: Dave Coon
Sent: Tuesday, June 23, 2009 3:44 PM
To: 'McLaughlin, Kyle L - DNR'; Gauthier Sr, Kevin J - DNR
Cc: Cathy Wendt
Subject: RE: Purple Loosestrife Control Plan

Kyle,

Meeting date & time confirmed. I will conference Cathy in.

Thanks again,

Dave

David M. Coon

Director, Environmental Affairs

Wisconsin Valley Improvement Company
2301 North Third Street
Wausau, WI 54403

(715) 848-2976 ext. 311
coon@wvic.com

From: McLaughlin, Kyle L - DNR [mailto:Kyle.McLaughlin@wisconsin.gov]
Sent: Tuesday, June 23, 2009 3:38 PM
To: Dave Coon; Gauthier Sr, Kevin J - DNR
Cc: Cathy Wendt; McLaughlin, Kyle L - DNR
Subject: RE: Purple Loosestrife Control Plan

This email is to confirm our conference call that will be taking place Friday June 26th at 10:00 am.

Kevin and I will call Dave at the number shown below and Dave can connect Cathy in; or we can do it if we have the number. Your choice.

Let me know if you have any questions.

Talk to you on Friday.

Sincerely,

 *Kyle L. McLaughlin*

Water Resource Management Specialist
Northern Region Lakes Program
Wisconsin Department of Natural Resources
DNR Service Center, 107 Sutliff Ave. Rhinelander, WI 54501
(☎) phone: (715)365-8905
(☎) fax: (715) 365-8932
(✉) e-mail: kyle.mclaughlin@wisconsin.gov

11/25/2009

From: Dave Coon [mailto:Coon@wvic.com]
Sent: Friday, June 19, 2009 11:30 AM
To: Gauthier Sr, Kevin J - DNR; McLaughlin, Kyle L - DNR
Cc: Cathy Wendt
Subject: Purple Loosestrife Control Plan

Kevin and Kyle,

The purpose for this email is to send you a copy of the letter we sent to FERC last November requesting to modify our Purple Loosestrife Control Plan (first Attachment). A copy of the proposed Plan accompanies the letter. This is the same Plan we sent to you for comment last October. We incorporated your comments into the Plan. The second Attachment is the Order from FERC we just received approving the Plan with some changes to the reporting requirements. Basically, we proposed to incorporate biological controls as a more natural method of loosestrife control and end or phase out chemical control.

I am now requesting that Cathy Wendt and I meet with you to plan our approach for monitoring purple loosestrife this summer. Our monitoring typically begins in early July. I know this is a very busy time for you, but would appreciate a meeting ASAP after you have had a chance to review the approved Plan. Cathy and I would be glad to come to your office for this meeting to reduce any travel time for you. The only area that we might want to consider continued chemical control (with Rodeo) would be at Willow Reservoir, but I would really appreciate your input and opinion on this. If we use chemical control then we must apply for the permits from DNR which will take some time to acquire.

I also consulted with Brock Woods last fall who had a number of relevant suggestions which were included in the Plan. He volunteered to meet with us this year if you feel that would be appropriate. If so, would you forward this information to him - I will leave that up to you.

Could you let me know a time frame for when we could meet.
Thanks for your consideration. Much appreciated!

Dave

David M. Coon
Director, Environmental Affairs

Wisconsin Valley Improvement Company
2301 North Third Street
Wausau, WI 54403

(715) 848-2976 ext. 311
coon@wvic.com

Dave Coon

From: Nick_Utrup@fws.gov
Sent: Friday, June 26, 2009 4:11 PM
To: Dave Coon
Cc: Cathy Wendt
Subject: Re: Purple Loosetrife Control Plan

Dave,

Thanks for the providing the approved control plan. I will review the attached documents when I return from vacation on July 6th. At this time, I see no reason for us to meet but will review the documents and contact you if I have any comments. Just so you know, I certainly appreciate reduction in the use of chemical treatments and am encouraged by the use of biological controls on Loosetrife.

I will let you know if a meeting is necessary.

Nick

Nicholas J. Utrup
Wisconsin Hydropower Coordinator
U.S. Fish and Wildlife Service
Green Bay Ecological Services Field Office
2661 Scott Tower Drive
New Franken, WI 54229

Office: (920) 866-1736
Mobile: (920) 530-9937
FAX: (920) 866-1710
Email: Nick_Utrup@fws.gov

"Dave Coon"
<Coon@wvic.com>

06/26/2009 03:53
PM

<Nick_Utrup@fws.gov>

"Cathy Wendt" <Wendt@wvic.com>

Subject
Purple Loosetrife Control Plan

To
cc

Nick,

The purpose for this email is to send you a copy of the letter we sent to FERC last November requesting to modify our Purple Loosetrife Control Plan (first Attachment). A copy of the proposed Plan accompanies the letter. This is the same Plan we sent to USFWS and DNR for comment last October. We received comments from the DNR which we incorporated into the Plan. The second Attachment is the Order from FERC we just received approving the Plan with some changes to the reporting requirements. Basically, we proposed to incorporate biological controls as a more natural method of loosetrife control and end chemical control.

I consulted with Kevin Gauthier and Kyle McLaughlin, Rhinelander DNR today regarding our

monitoring plan for 2009 and we concluded that we would not attempt any chemical applications this year. We will survey the three reservoirs (Willow, Rice & Spirit) for purple loosestrife and any Galerucella sp. beetles and record loosestrife distribution and density with GPS as stipulated in the Plan. We will conference again in the fall to review the maps and data we compile and determine the monitoring approach for 2010.

I would be glad to explain the monitoring approach we discussed with Kevin and Kyle for the 2009 summer survey. I would also welcome any comments or suggestions you may have after you have had a chance to review the attached material. Our monitoring is scheduled to begin in late July, which is when purple loosestrife in the project area is typically in full bloom. I know this is a very busy time for you, but would offer to discuss this via a conference call at your convenience, but before July 14 if at all possible. Cathy Wendt and I would be glad to come to your office for a meeting if you feel this is necessary.

You can email me to let me know if you have any comments and to arrange a conference call or meeting as you desire.
Thank you for your consideration and please feel welcome to contact me at any time.

Dave

David M. Coon
Director, Environmental Affairs

Wisconsin Valley Improvement Company
2301 North Third Street
Wausau, WI 54403

(715) 848-2976 ext. 311
coon@wvic.com

[attachment "PL Control Plan.pdf" deleted by Nick Utrup/R3/FWS/DOI] [attachment "FERC Order Approving P.L. Plan.pdf" deleted by Nick Utrup/R3/FWS/DOI]

Dave Coon

From: Dave Coon
Sent: Wednesday, October 21, 2009 8:54 AM
To: Kevin Gauthier (kevin.gauthiersr@wisconsin.gov); Kyle McLaughlin (Kyle.McLaughlin@Wisconsin.gov); 'US Fish & Wildlife Service (Nick_Utrup@fws.gov)'
Subject: Purple Loosetrife Monitoring Report
Attachments: Microsoft Word - 2009 Annual Report Agencies.pdf; FERC Order Approving P.L. Plan.pdf
Gentlemen,

In compliance with the FERC Order Amending WVIC's Purple Loosetrife Control Plan dated June 16, 2009 (Attached) I am submitting WVIC's Purple Loosetrife Annual Monitoring Report – 2009 for your review and comment. The report also contains WVIC's proposed purple loosetrife monitoring plan for 2010.

Please provide any comments to my attention via email or at the mailing address below by November 23, 2009.

Thank you.
Dave

David M. Coon
Director, Environmental Affairs

Wisconsin Valley Improvement Company
2301 North Third Street
Wausau, WI 54403

(715) 848-2976 ext. 311
coon@wvic.com

10/21/2009