



Throughout the presentation when you see this symbol, put your cursor over the box to read more detail.



North Branch Beaver Creek TWA WQM Plan 2017

Little Peshtigo River (GB08)



Andy Hudak, DNR Stream Biologist

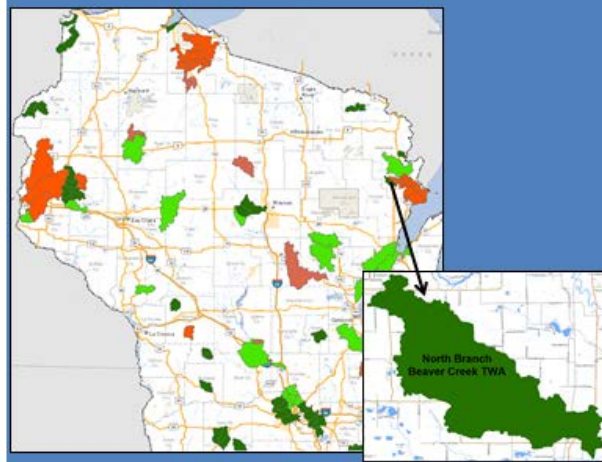


North Branch Beaver Creek
Photo by Andy Hudak, DNR

2014/07/30

NORTH BRANCH BEAVER CREEK TWA WQM PLAN 2017

Little Peshtigo River (GB08)
HUC: 040301050503, Monitored in 2014

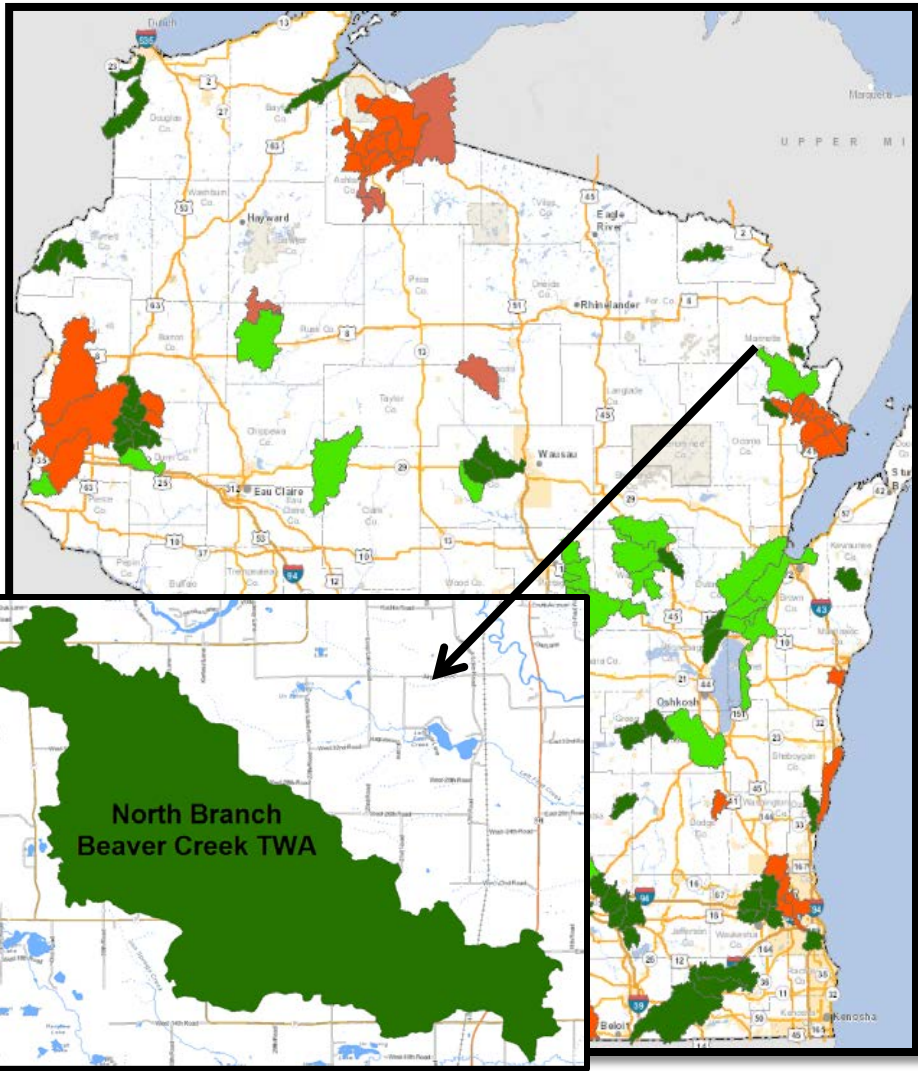
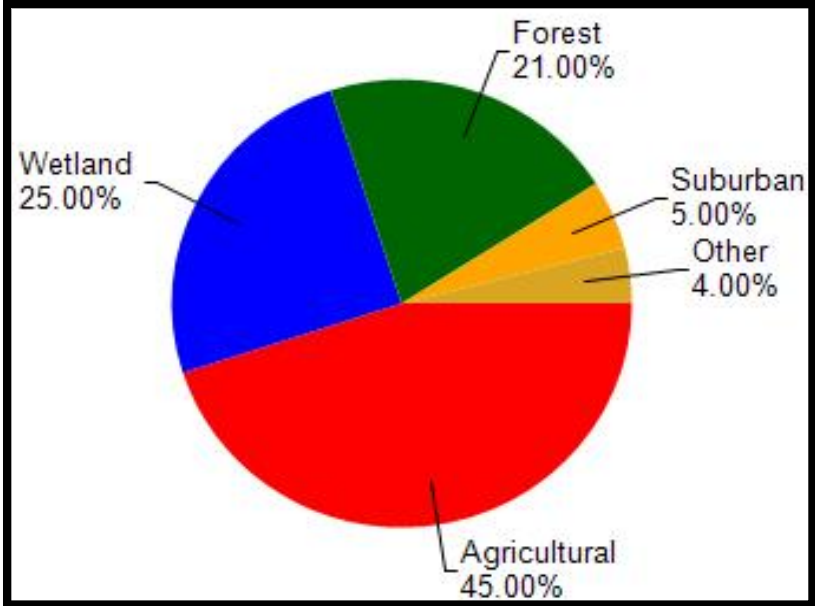


*A Watershed Report
created by the
Bureau of Water
Quality in support
of the Clean Water
Act.*



EGAD # 3200-2017-22
Water Quality Bureau,
Wisconsin DNR

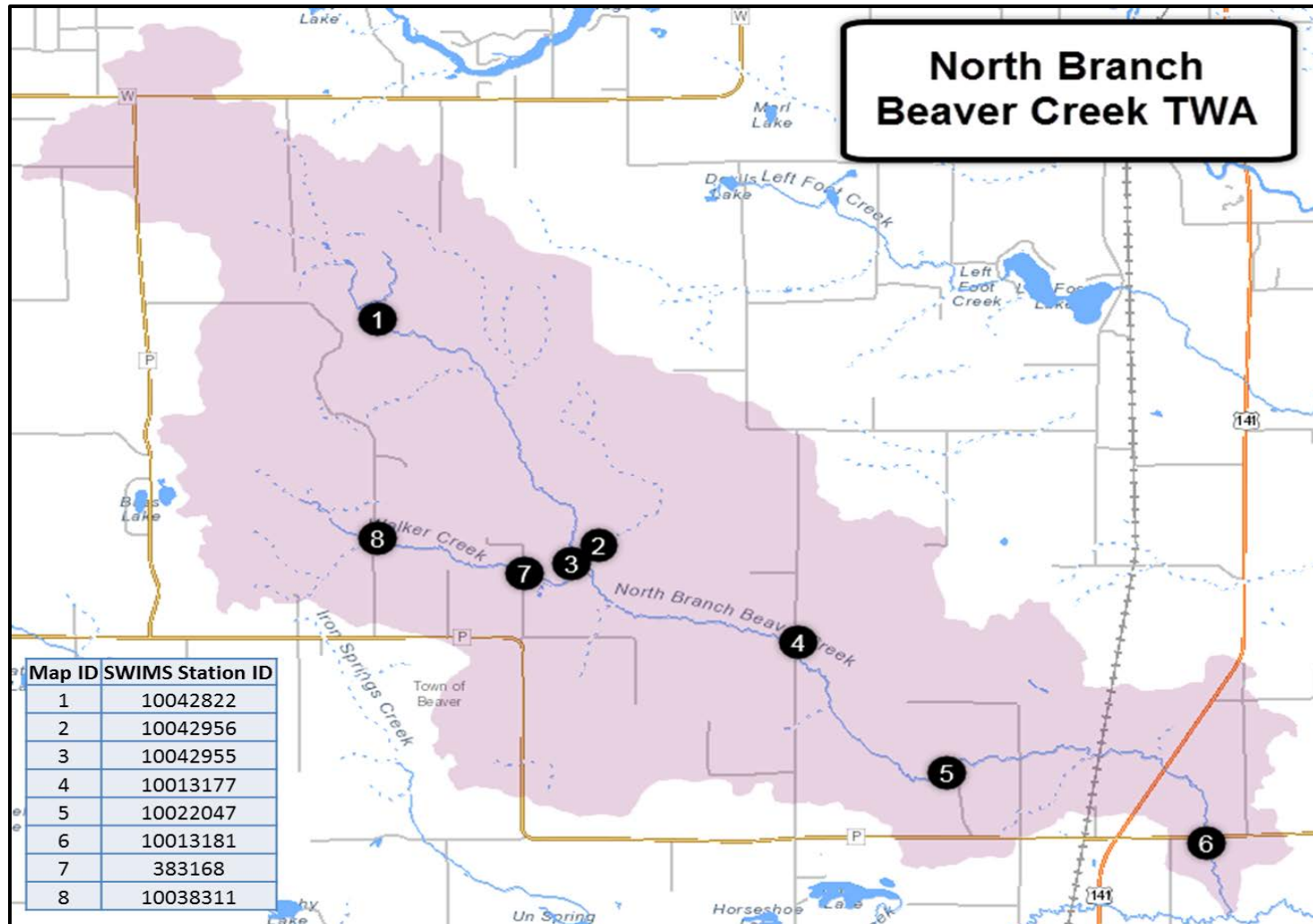
Project Location and Land Use



Little Peshtigo River watershed is 158.43 mi². Land use in the watershed is primarily agricultural (45%), wetland (25%) and a mix of forest (21%) and other uses (9%). This watershed has 206.41 stream miles, 2,168.89 lake acres and 24,619.22 wetland acres.

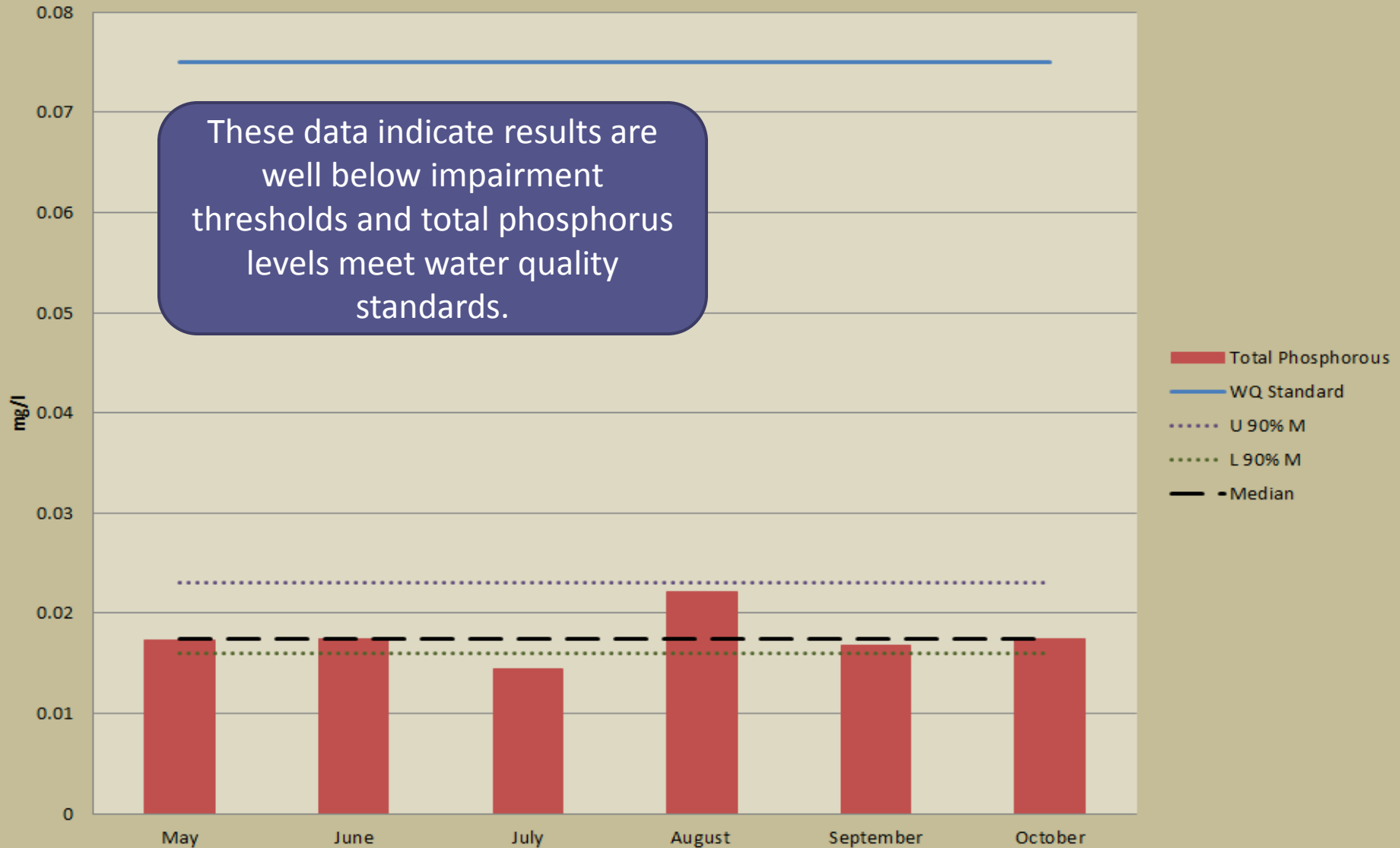
Study Purpose

Conduct chemistry, physical, and biological evaluation monitoring to identify potential stressors on the health of the aquatic systems.



Study Results - Phosphorus

Total Phosphorous Concnetration mg/l North Branch Beaver Creek 2014

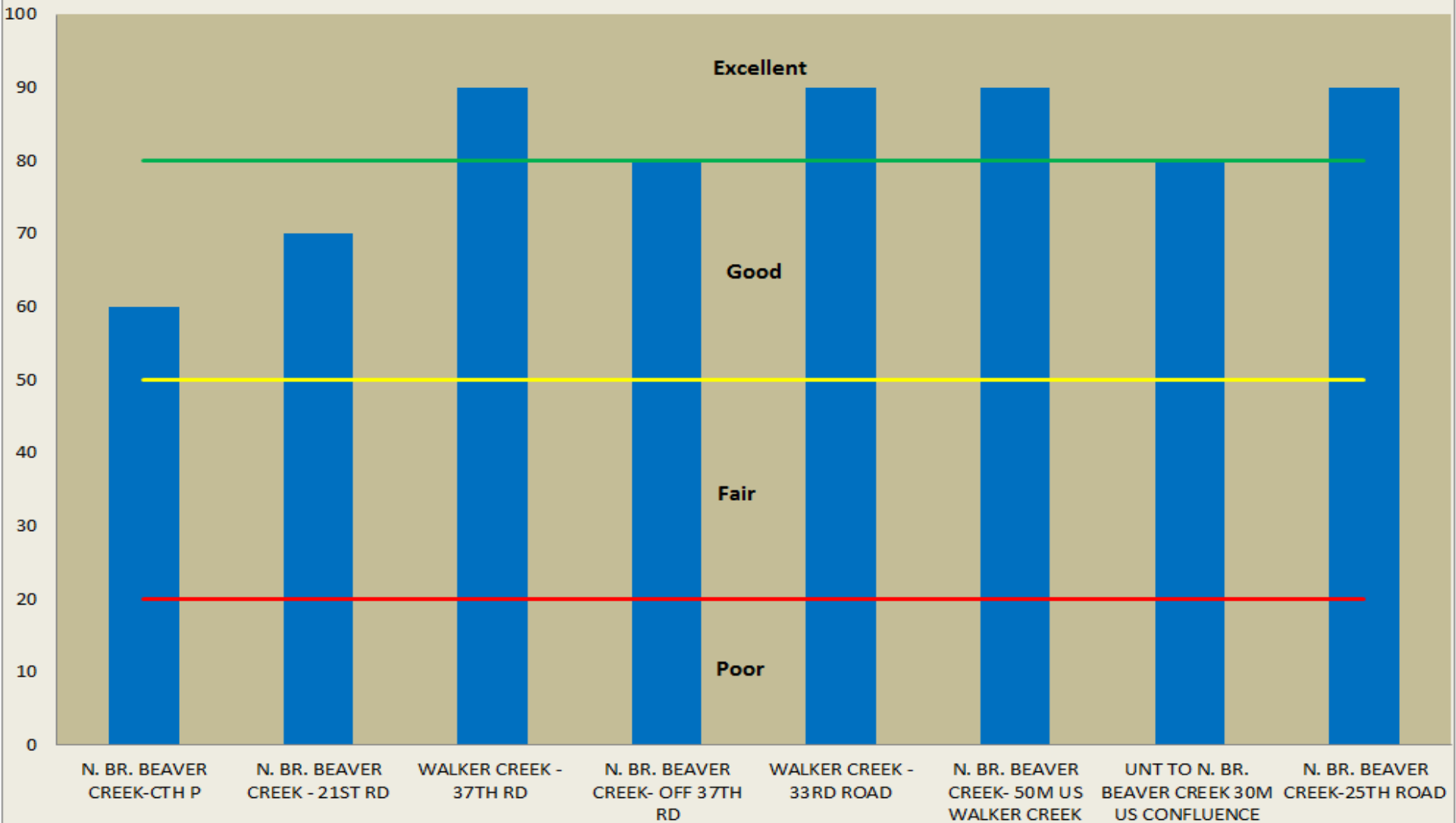




These stations indicate good to excellent condition

Study Results – Fish IBI

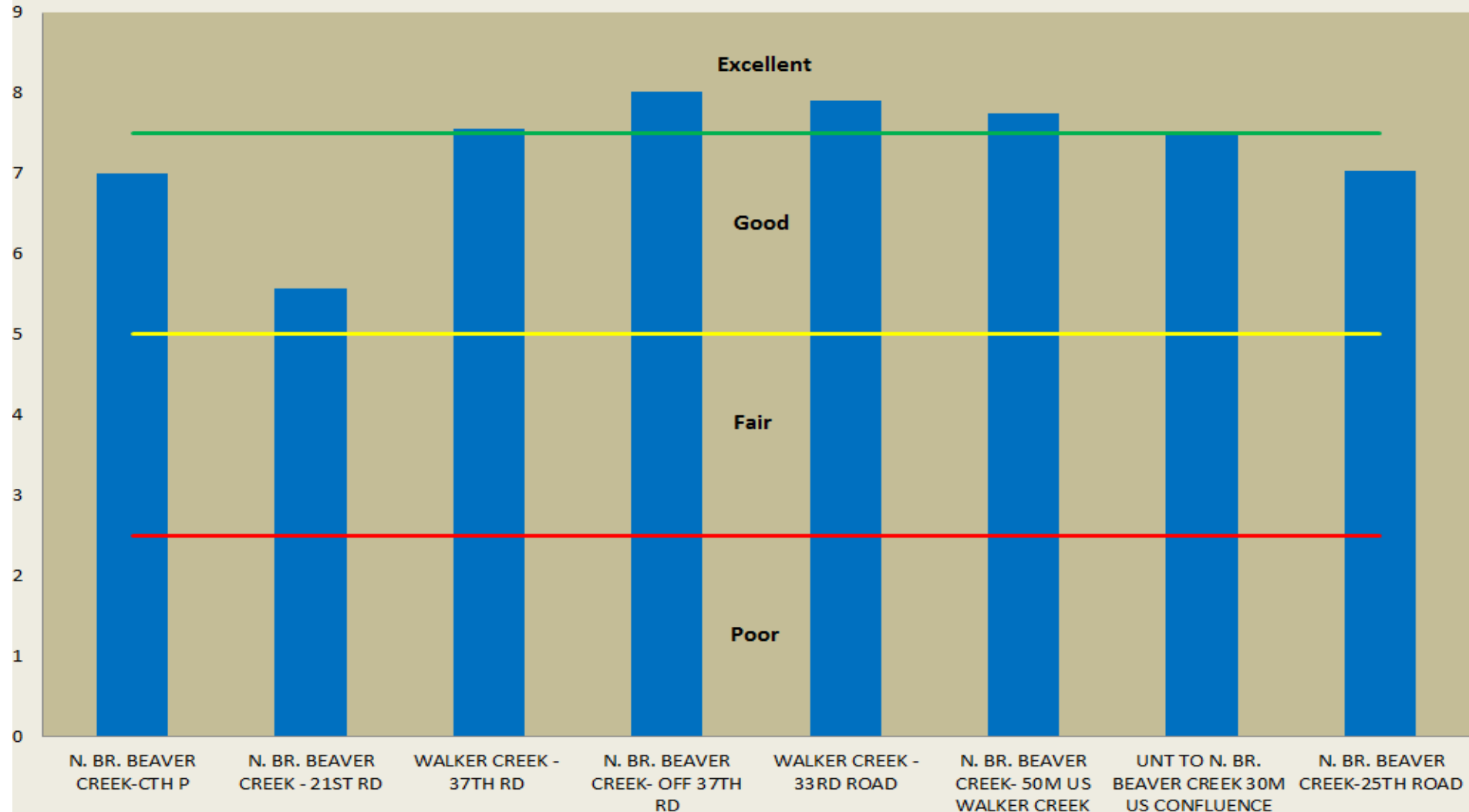
Fish IBI N. BR. Beaver Creek 2014



Study Results – Macroinvertebrates

These stations indicate good to excellent condition

M-IBI N. BR. Beaver Creek 2014



Management Recommendations

- Practice and follow all Forestry BMP's in the watershed.
- Use proper site planning for new homes to avoid erodible slopes, steep slopes, and springs.
- Continue education for AIS spread prevention at popular fishing access locations



Recommendations Continued

- Ensure proper evaluation of high capacity wells ensures siting does not impact springs or small tributaries that contribute base flow to Walker and N.B Beaver Creek.
- Enhance fishing opportunities through maintenance of sand traps in the lower portion of the watershed, limited alder brush clearing, and trout habitat projects to maintain high quality fishing opportunities and access.



For more information

- Contact:
 - Email: Andy Hudak, 920-662-5117
 - Link to the [TWA WQM Plans website](#)
 - Link to [Draft Report](#)