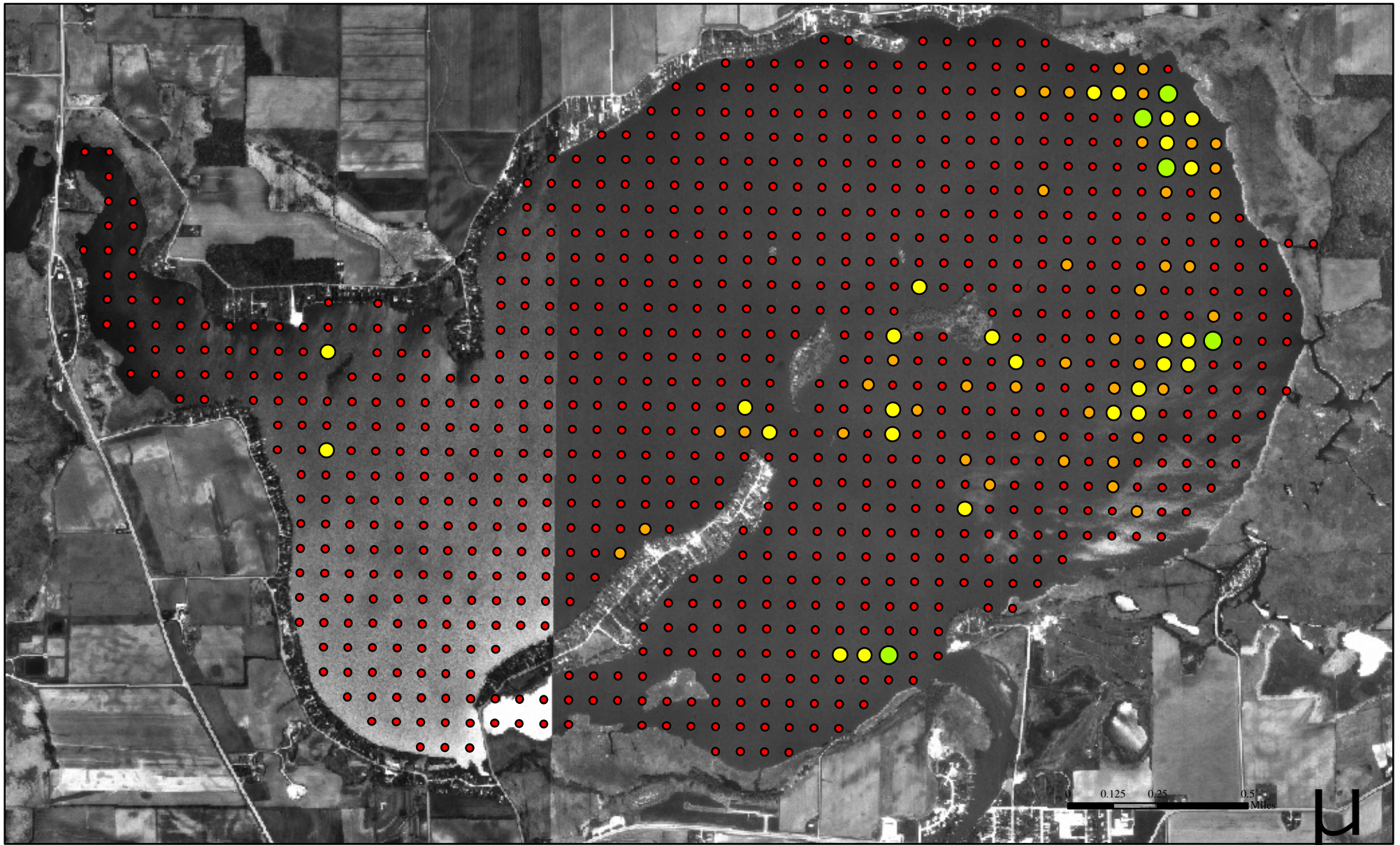


APPENDIX B

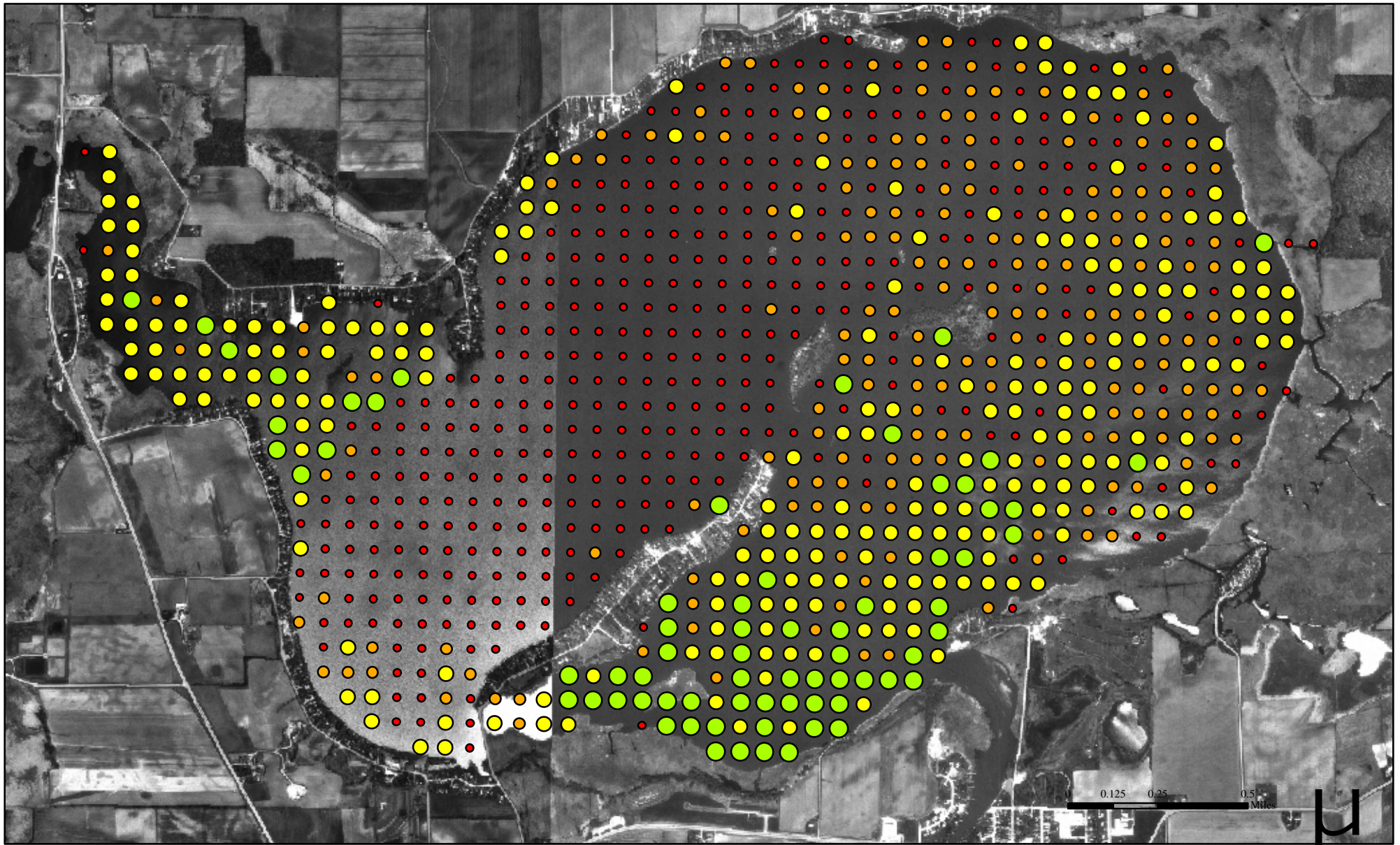
Fox Lake Aquatic Plant Survey Maps 2006



**2006 Chara Density
Fox Lake - Dodge County, WI**

Legend

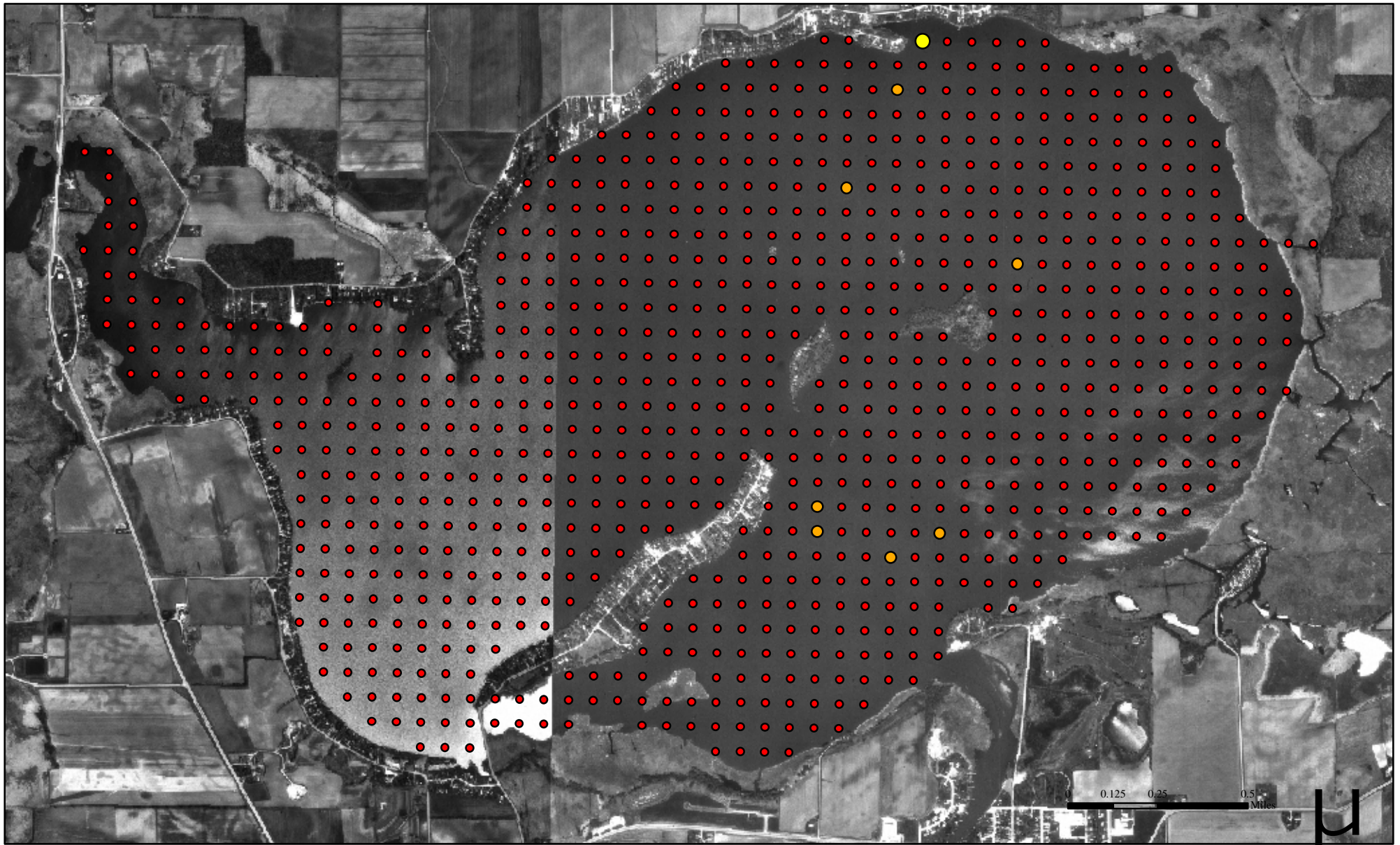
- No Plants
- Trace
- Normal
- Dense



2006 Coontail Density
Fox Lake - Dodge County, WI

Legend

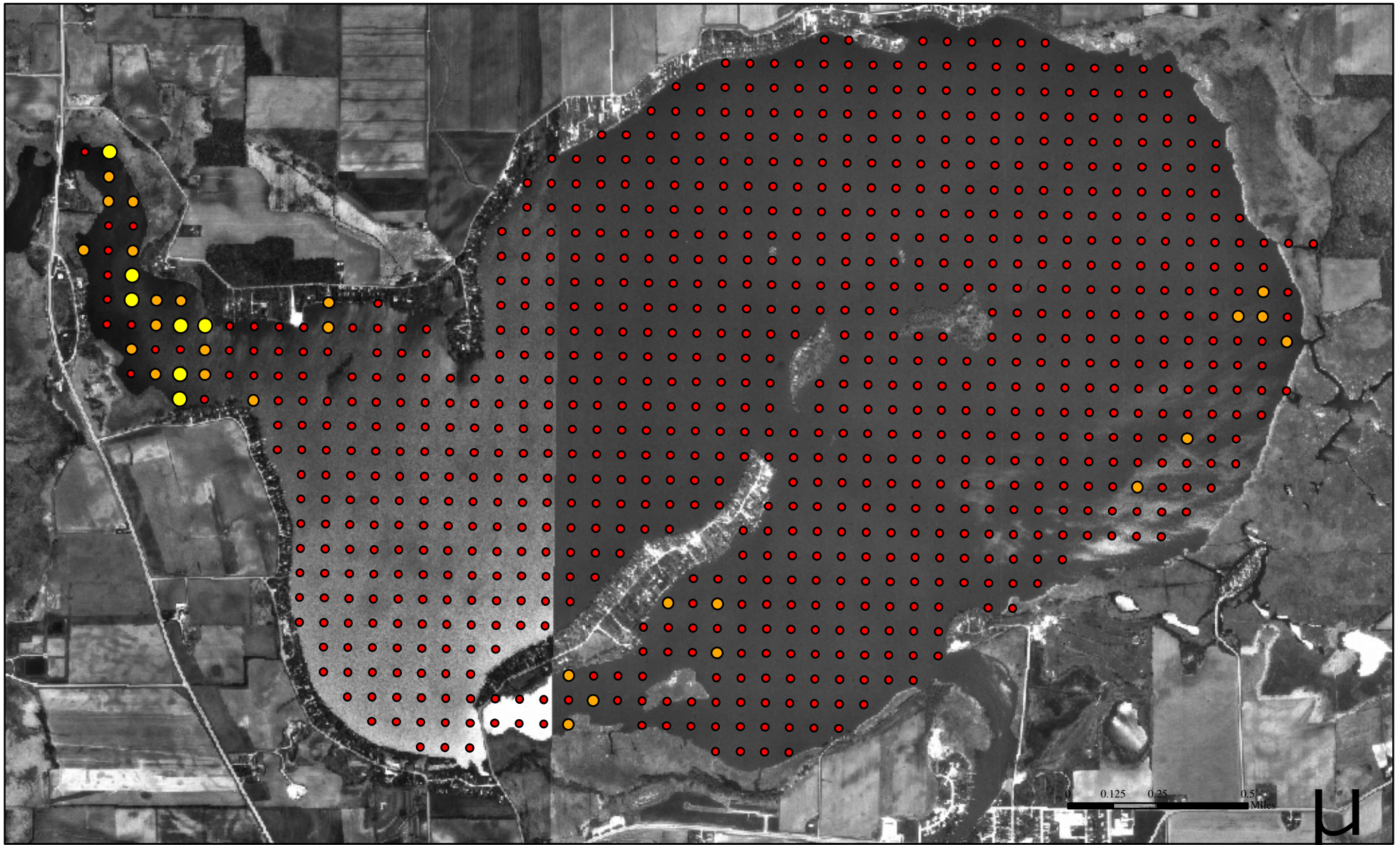
- No Plants
- Trace
- Normal
- Dense



**2006 Curly-leaf Pondweed Density
Fox Lake - Dodge County, WI**

Legend

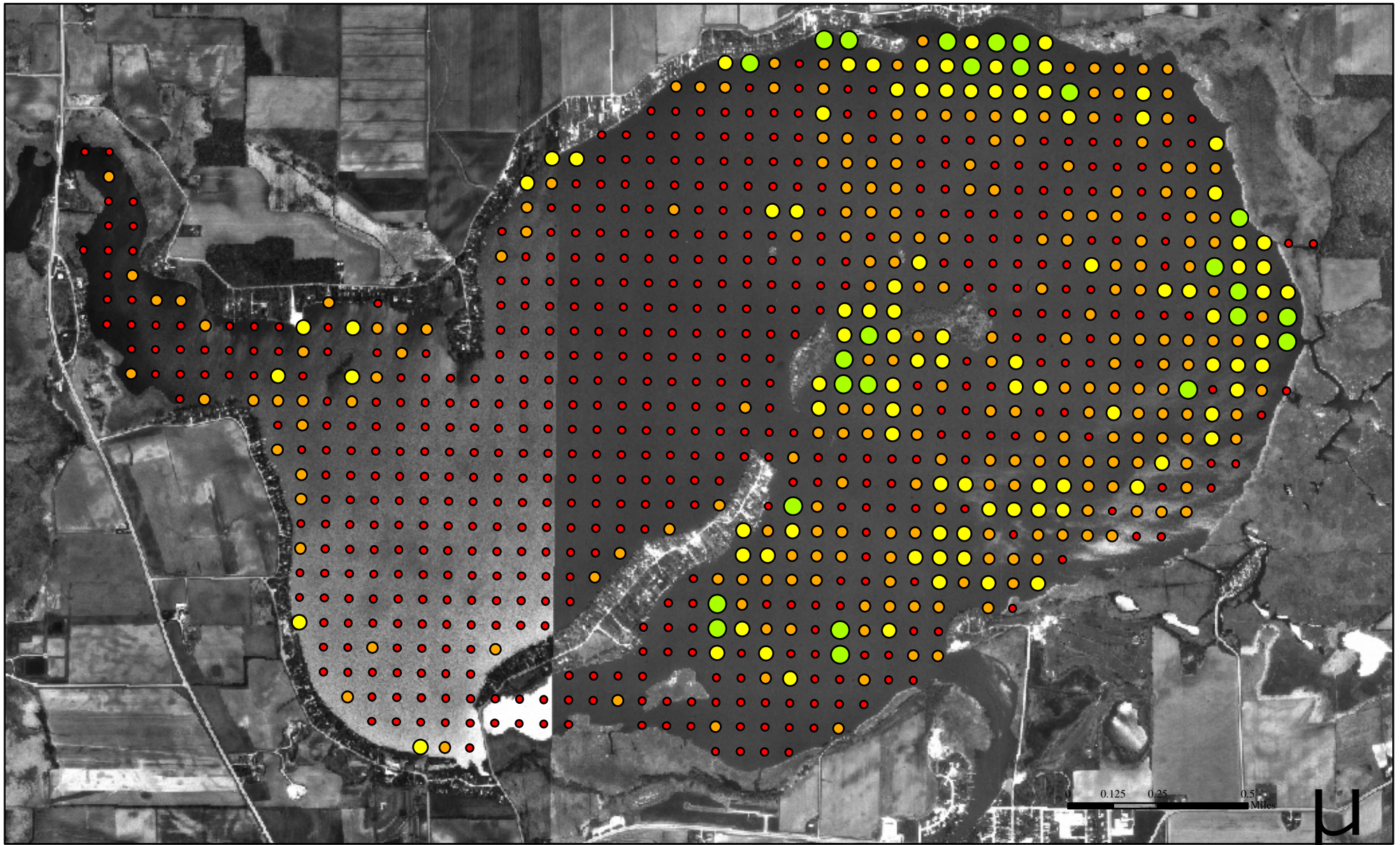
- No Plants
- Trace
- Normal
- Dense



**2006 Duckweed Density
Fox Lake - Dodge County, WI**

Legend

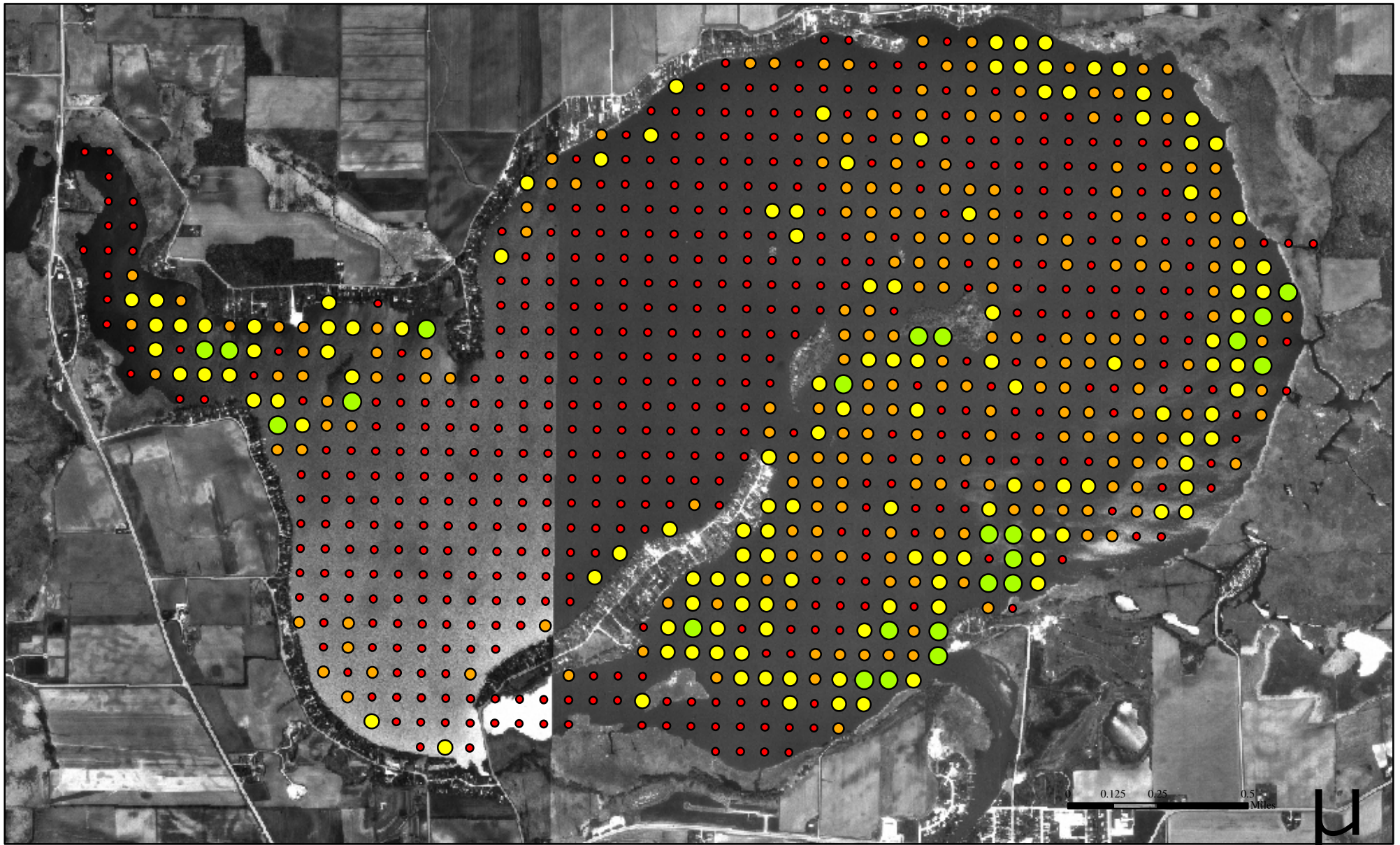
- No Plants
- Trace
- Normal
- Dense



**2006 Elodea Density
Fox Lake - Dodge County, WI**

Legend

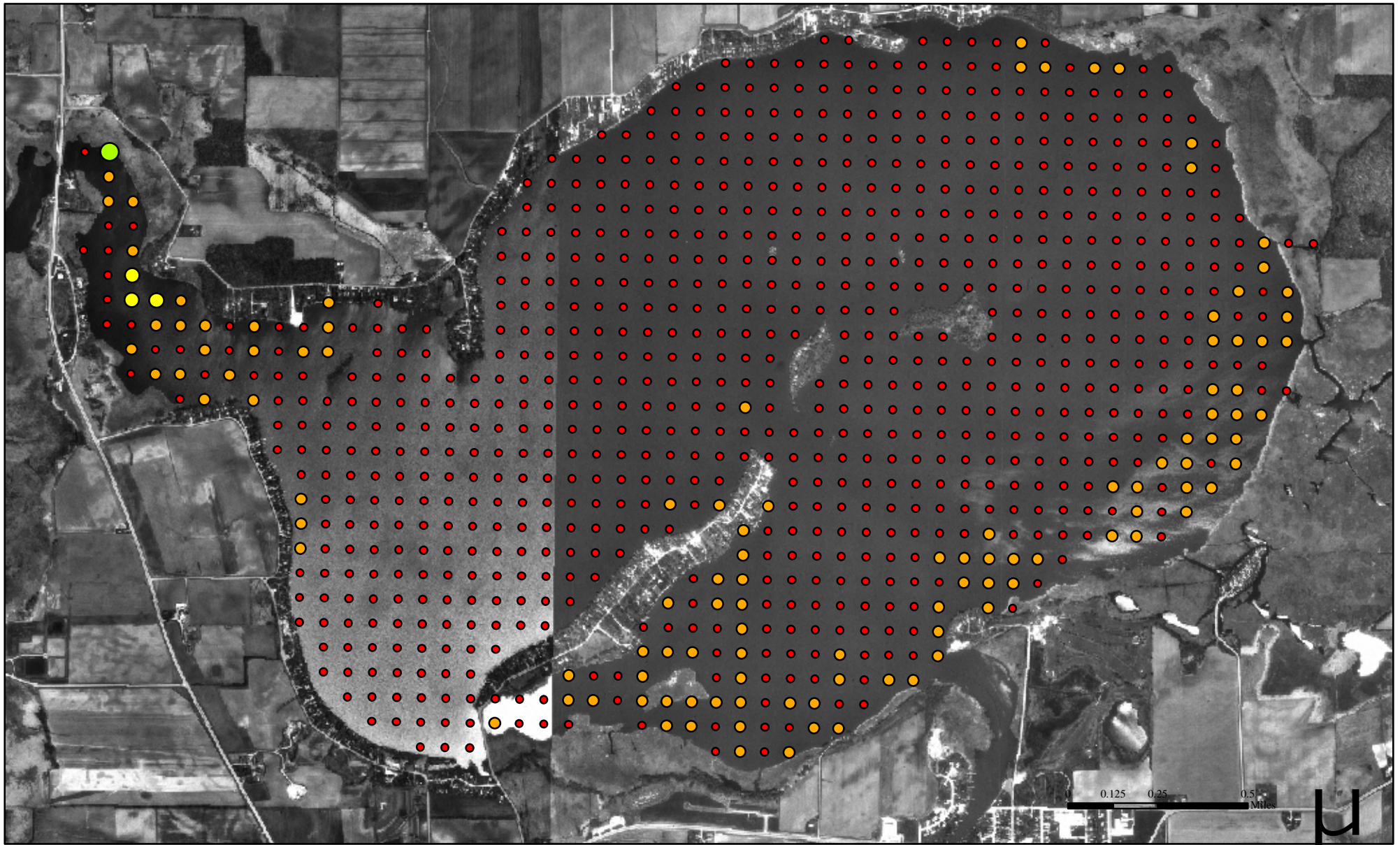
- No Plants
- Trace
- Normal
- Dense



**2006 Eurasian water-milfoil Density
Fox Lake - Dodge County, WI**

Legend

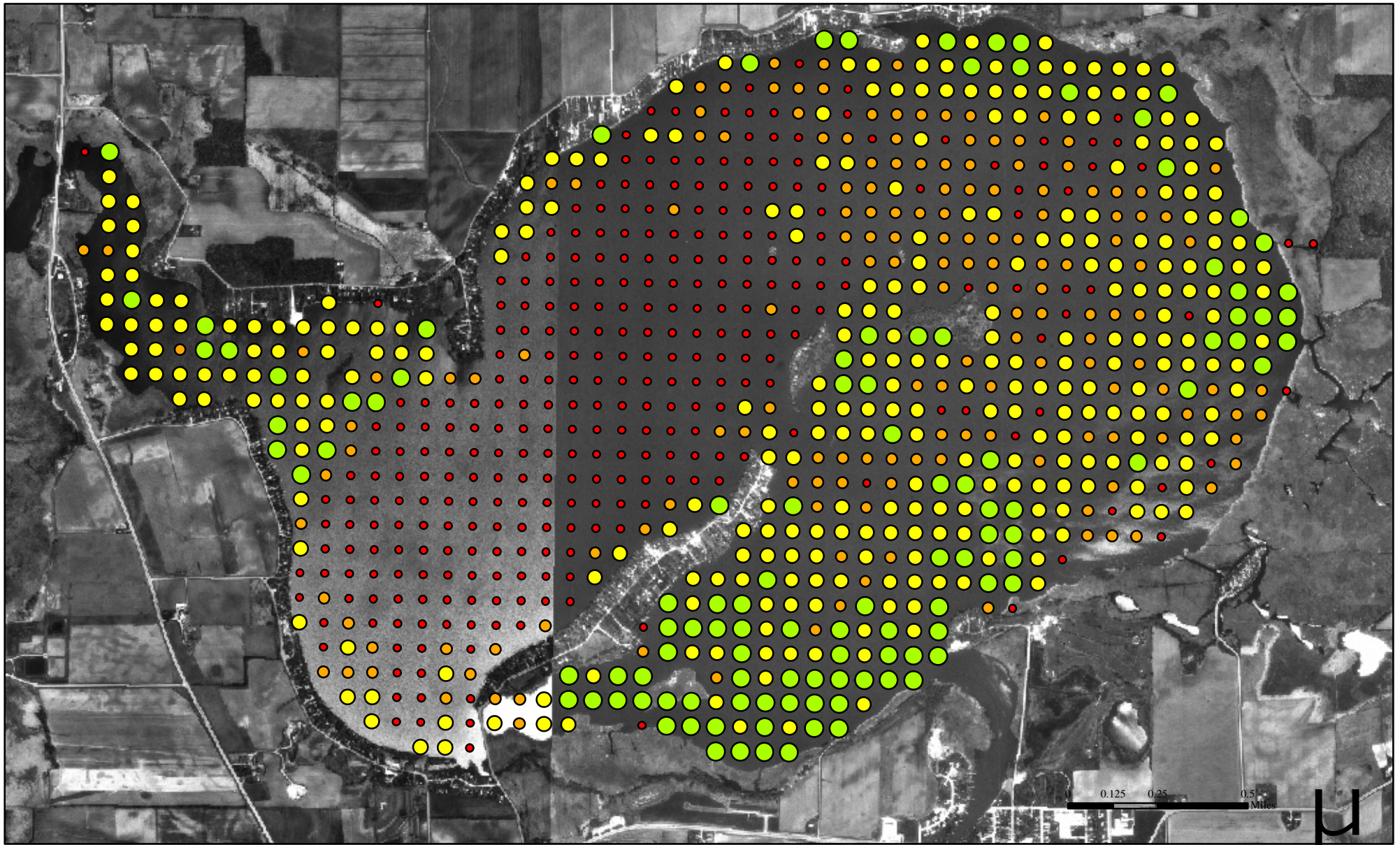
- No Plants
- Trace
- Normal
- Dense



**2006 Filamentous Algae Density
Fox Lake - Dodge County, WI**

Legend

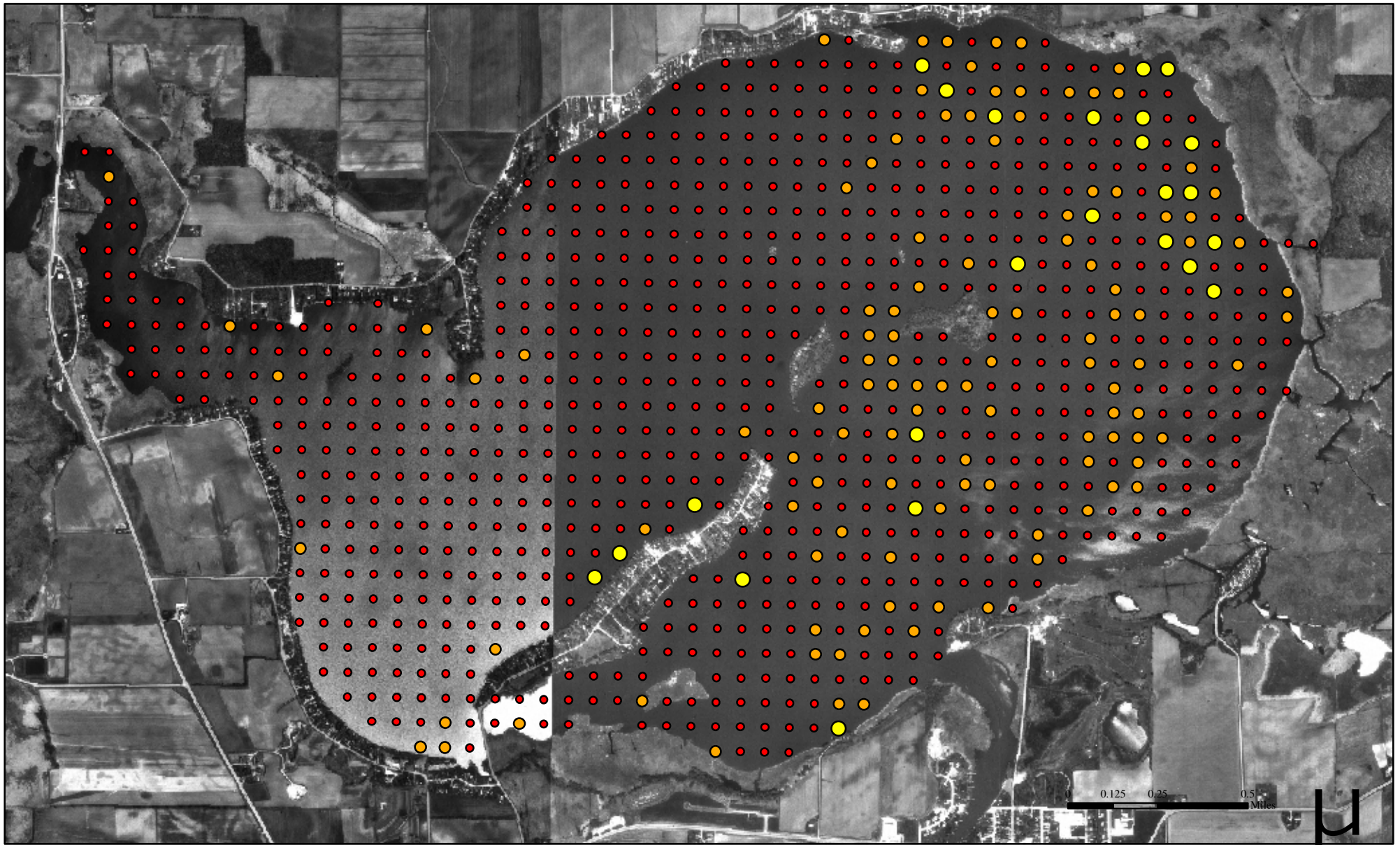
- No Plants
- Trace
- Normal
- Dense



**2006 Overall Plant Density
Fox Lake - Dodge County, WI**

Legend

- No Plants
- Trace
- Normal
- Dense



**2006 Sago Pondweed Density
Fox Lake - Dodge County, WI**

Legend

- No Plants
- Trace
- Normal
- Dense

APPENDIX C

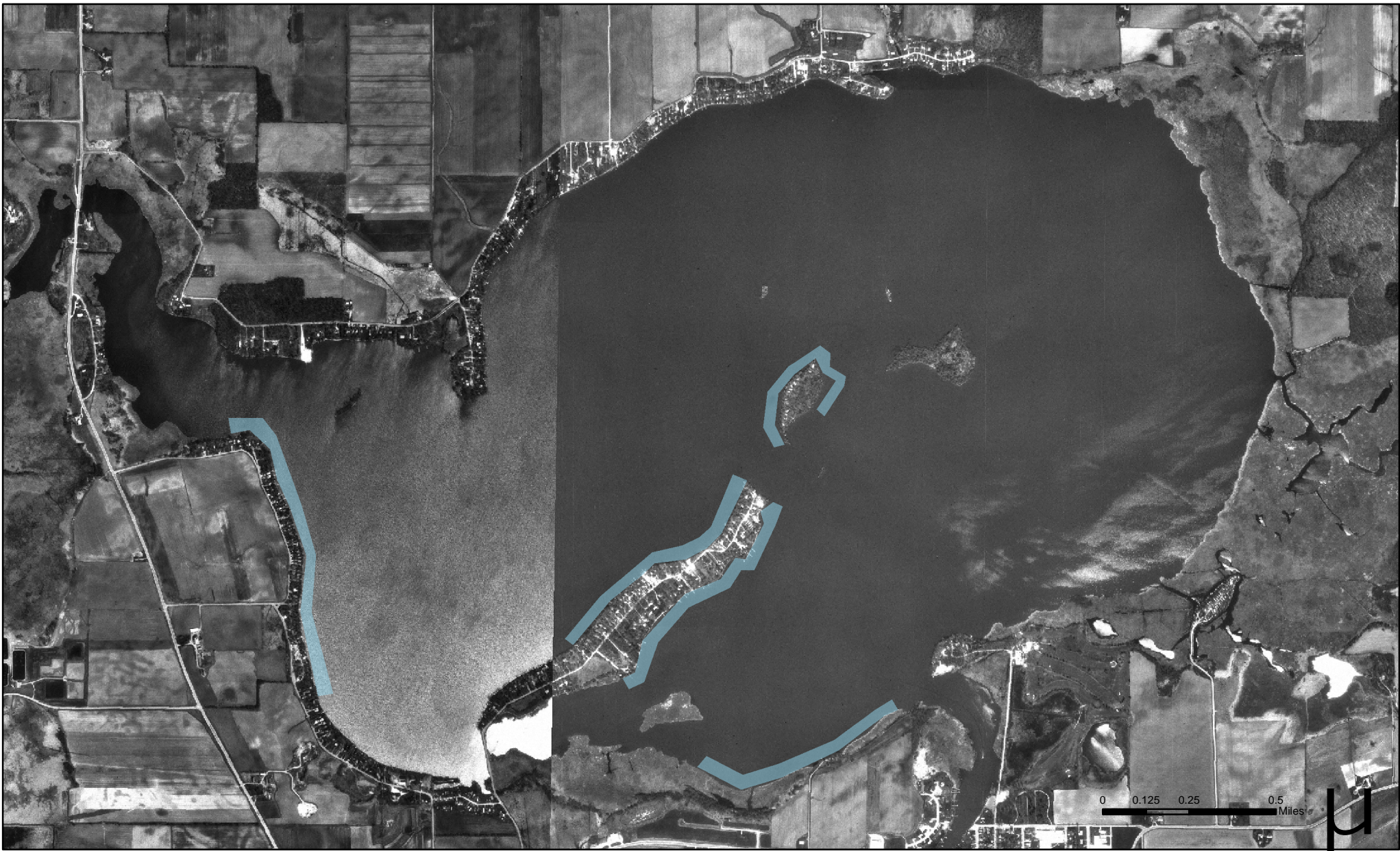
Aquatic Plant Survey Results 2006

	A	B	C	D	E	F	G	H	J	K	L	M	N	O	Q	R	S	V	X	AE	AN	AO	BA	BE	BG	BH	CB	DD	DE	DF	DN
1	Entry	Total Number Species at Site (NO ENTRY!)	Total Number Species - veg sites only (NO ENTRY!)includes exotics	Total Number Species - veg sites only (NO ENTRY!) No exotics	Total Number Species at Site (shallower than max depth) (NO ENTRY!) includes exotics	Total Number Species at Site (shallower than max depth) (NO ENTRY!), no exotics	Depth with some plants (NO ENTRY!)	Depths within vegetated range(NO ENTRY!)	Sampling point	Latitude(need electronic copy of site locations)	Longitude (need electronic copy of site locations)	Depth (ft)	Dominant sediment type (M=muck, S=Sand, R=Rock)	Sampled holding rake pole (P) or rake rope (R)?	Myriophyllum spicatum,Eurasian water-milfoil	Potamogeton crispus, Curly-leaf pondweed	filamentous algae	Ceratophyllum demersum,Coontail	Chara ,Muskgrasses	Elodea canadensis ,Common waterweed	Lemna minor,Small duckweed	Lemna trisulca ,Forked duckweed	Najas flexilis,Bushy pondweed	Nuphar advena ,Yellow pond lily	Nymphaea odorata ,White water lily	Phalaris arundinacea,Reed canary grass	Potamogeton pusillus ,Small pondweed	Stuckenia pectinata,Sago pondweed	Typha angustifolia,Narrow-leaved cattail	Typha latifolia,Broad-leaved cattail	Vallisneria americana,Wild celery
290		0							290	43.585	-88.931	15	P																		
291		0							290	43.584	-88.931	15	P																		
292		0							291	43.583	-88.931	15	P																		
293		0							292	43.582	-88.931	15	P																		
294		0							293	43.581	-88.931	15	P																		
295		0							294	43.580	-88.931	15	P																		
296		0							295	43.579	-88.931	12 R	P																		
297		4				0			296	43.578	-88.931	5 R	P		2																
298		1				1			297	43.573	-88.931	5 M	P																		
299		2				2			298	43.572	-88.931	4 M	P																		
300		0				0			299	43.566	-88.929	7 M	P																		
301		2				2			300	43.565	-88.929	9 M	P		2																
302		0				0			301	43.564	-88.929	12 M	P																		
303		0				0			302	43.563	-88.929	13 M	P																		
304		0				0			303	43.562	-88.929	14 M	P																		
305		0				0			304	43.561	-88.930	15 M	P																		
306		0				0			305	43.560	-88.930	15 M	P																		
307		0				0			306	43.569	-88.930	15	P																		
308		0				0			307	43.568	-88.930	15	P																		
309		0				0			308	43.567	-88.930	15	P																		
310		0				0			309	43.566	-88.930	15	P																		
311		0				0			310	43.565	-88.930	15	P																		
312		0				0			311	43.564	-88.930	15	P																		
313		0				0			312	43.563	-88.930	15	P																		
314		0				0			313	43.562	-88.930	15	P																		
315		0				0			314	43.561	-88.930	15	P																		
316		0				0			315	43.560	-88.930	7 R	P																		
317		2				2			316	43.579	-88.930	5 R	P							1											
318		0				0			317	43.575	-88.930	4 M	P																		
319		3				3			318	43.574	-88.930	3 M	P																		
320		2				2			319	43.573	-88.930	3 M	P																		
321		4				4			320	43.572	-88.930	4 M	P		2													1			

	A	B	C	D	E	F	G	H	J	K	L	M	N	O	Q	R	S	V	X	AE	AN	AO	BA	BE	BG	BH	CB	DD	DE	DF	DN
					</																										

APPENDIX D

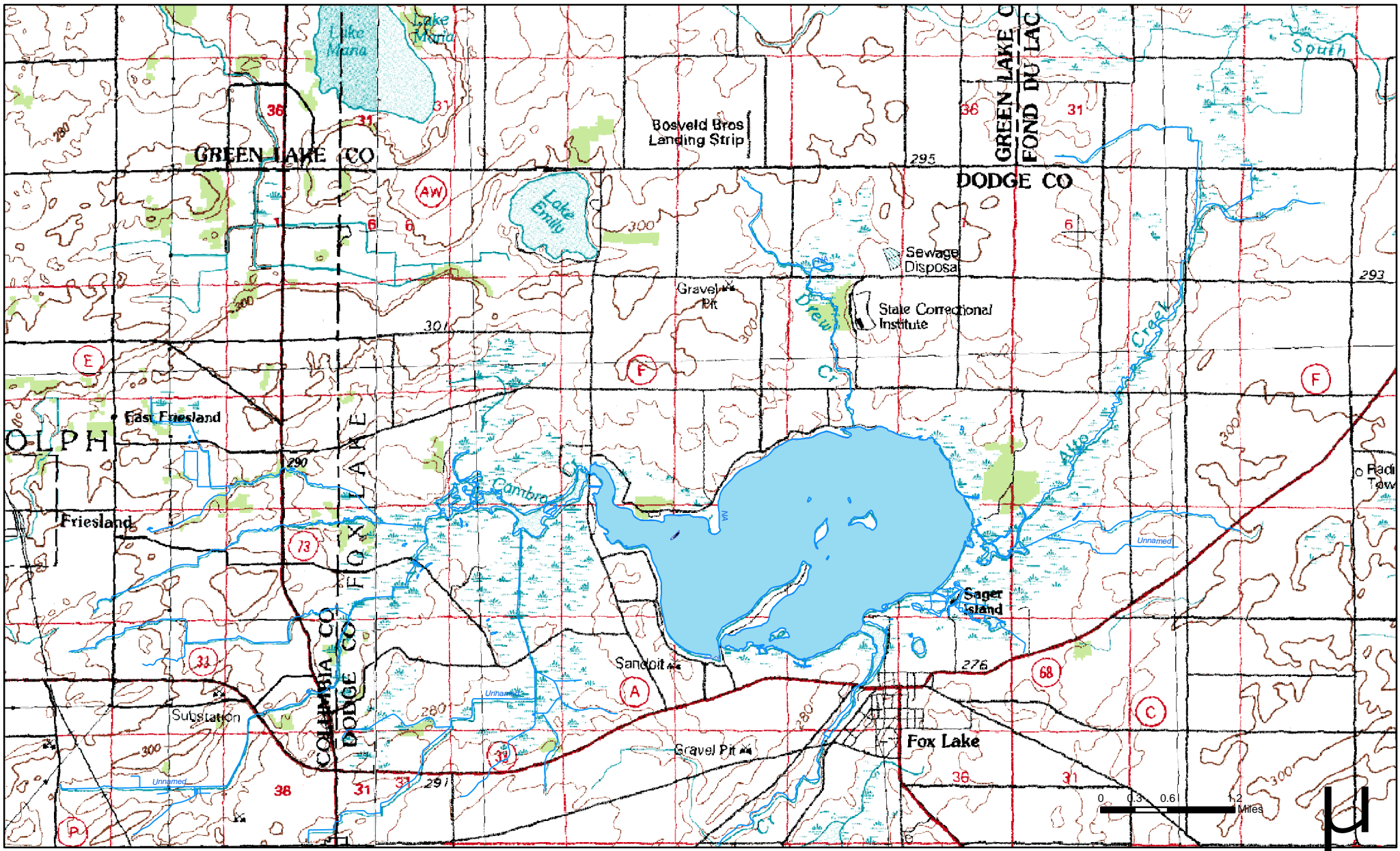
Additional Maps



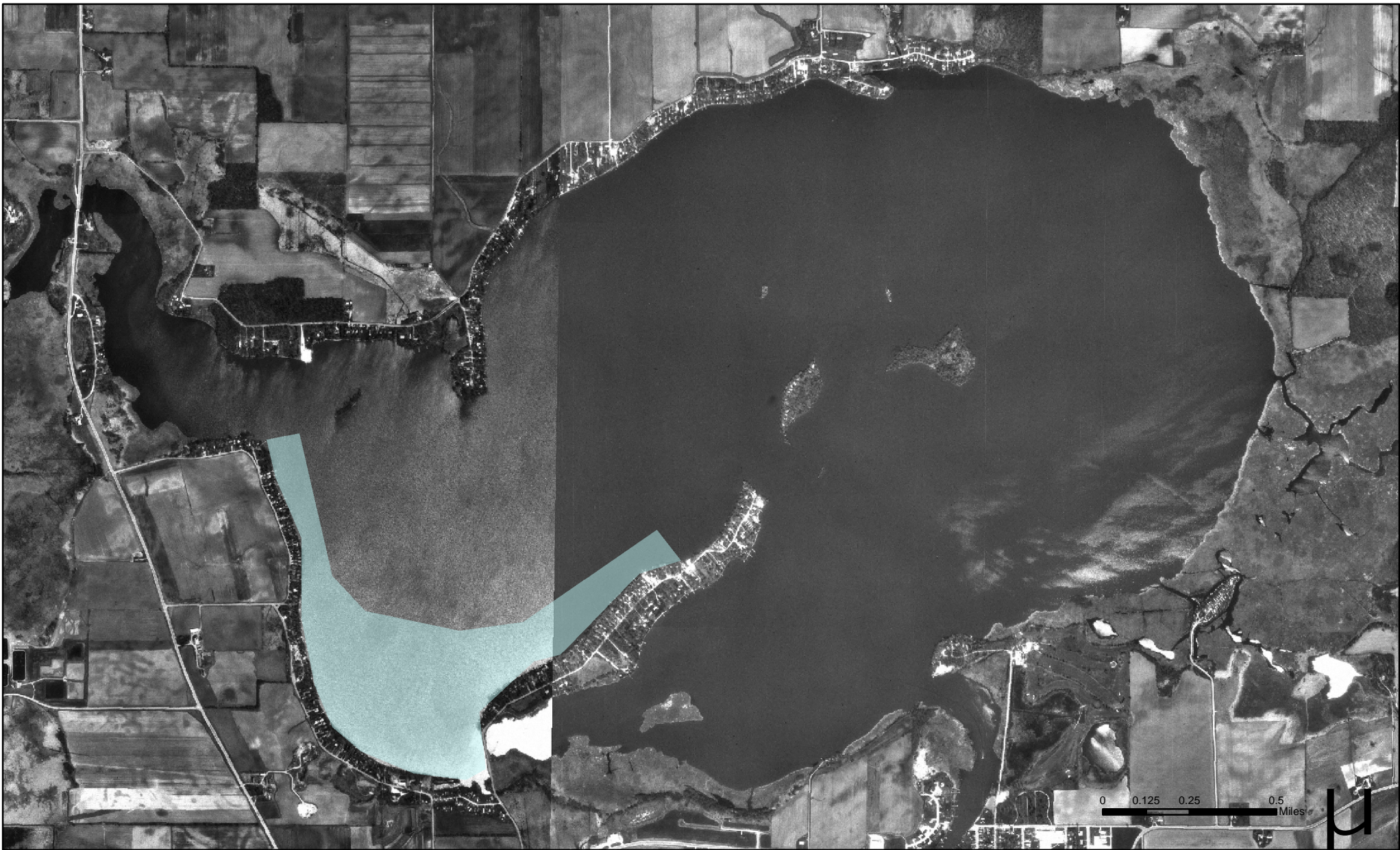
Fish Nursery Areas
Fox Lake - Dodge County, WI

Legend
Fish Nursery Areas

Hey and Associates, Inc.
Water Resources, Wetlands and Ecology



**Lake Inputs
Fox Lake - Dodge County, WI**



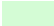
**Water Skiing Area
Fox Lake - Dodge County, WI**

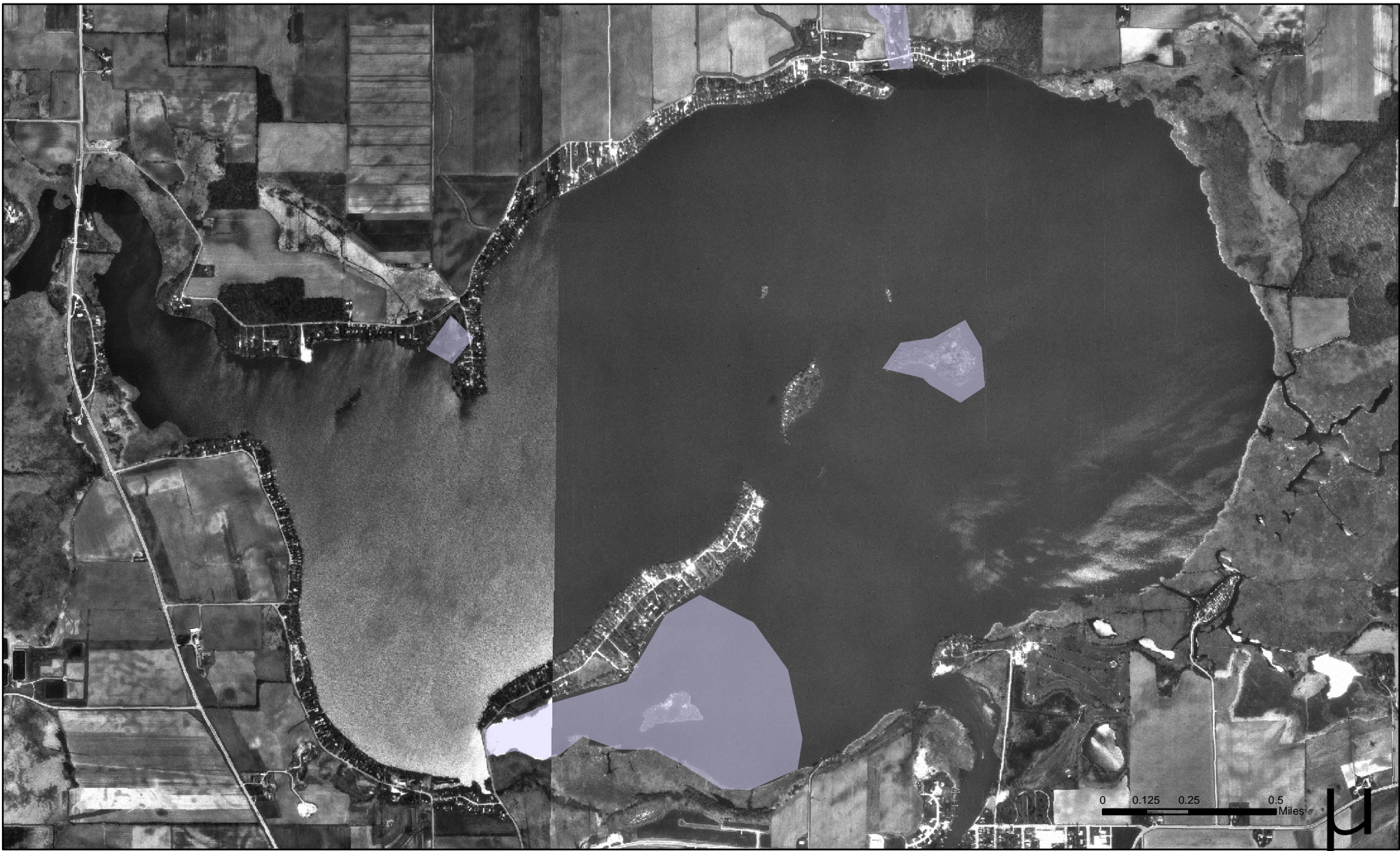
Legend
Water Skiing Area



**Slow No Wake Zones
Fox Lake - Dodge County, WI**

Legend

 Slow No Wake



Wildlife Areas
Fox Lake - Dodge County, WI

Legend
Wildlife Areas

Hey and Associates, Inc.
Water Resources, Wetlands and Ecology

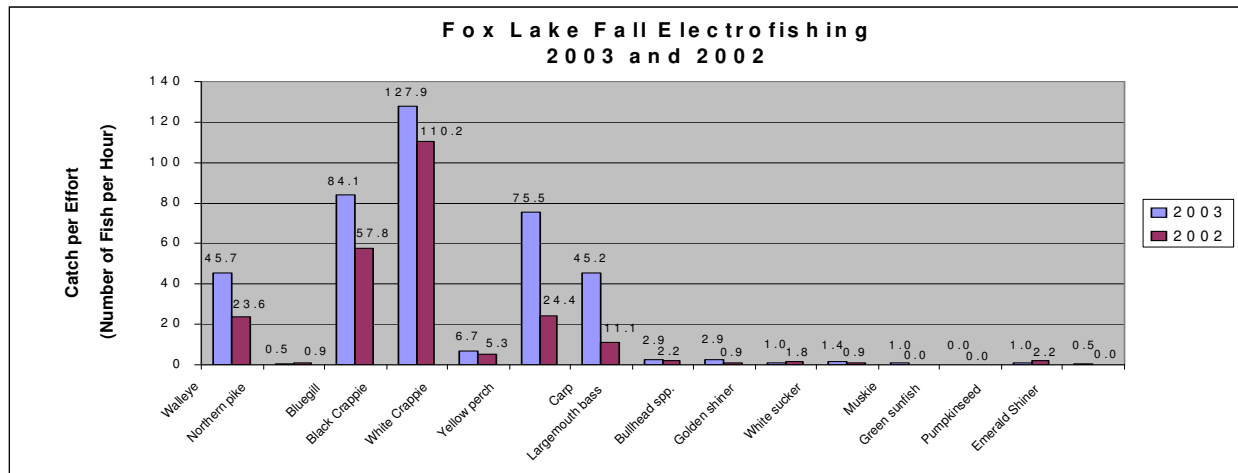
APPENDIX E

Fall Electrofishing Reports

Fox Lake Fall Electrofishing Summary Report – 2003

Fall Electrofishing - Defined

Fall electrofishing was conducted on Fox Lake in Dodge County on September 15, 2003. Fall electrofishing is conducted using a large boomshocker boat during the fall allowing for the collection of young-of-the-year (YOY) and adult bass and walleye that are often undersampled by other gear types. In order to standardize fisheries data, total effort, in the form of time spent shocking and/or miles of shoreline shocked is recorded. For this survey, the total effort expended was 2.08 hours and the following stations were sampled: 1.) Inlet of Cambria Creek south (25 minutes), 2.) North side of Chief Kuno Trail (20 minutes), 3.) South side of Chief Kuno Trail (20 minutes), 4.) South shore of The Jug to outlet (20 minutes), 5.) Elmwood Island (20 minutes), 6.) Green Bell tavern to Maple Point (20 minutes). Lengths and scale samples were taken from a subset of fish and all fish were returned to the lake. This report highlights the findings of 2003 fall electrofishing with comparisons between 2002 fall electrofishing where applicable.



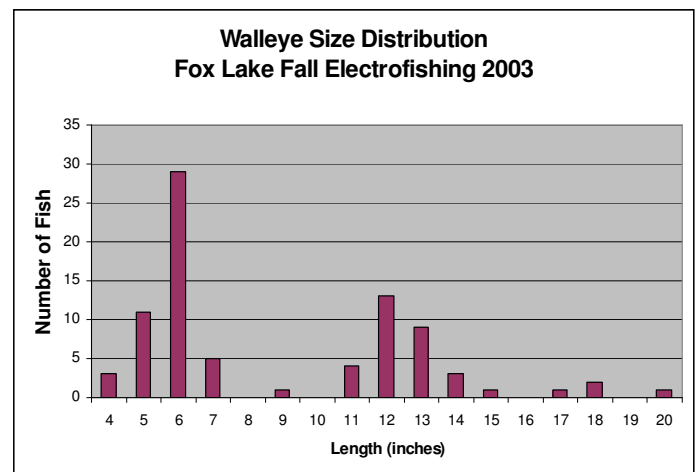
Gamefish Summary

Walleye

Abundance: 2003 Fall Electrofishing Catch = 95 total fish, or 45.7 fish/hour.

Size Structure: 2003 Length range = 4.0-20.0 inches.
2003 Average Length = 9.24 inches.

The total number of walleye sampled during 2003 fall electrofishing was 96 fish, up from 53 fish in 2002. The number of young-of-the-year (YOY) walleye under 10 inches in length increased to 25 fish per hour in 2003, up from 13.8 per hour in 2002 and 0 per hour in 2001 fall electrofishing. Hopefully this positive trend will continue into future years and help improve the adult walleye population in Fox Lake.



Largemouth bass

Abundance: 2003 Fall Electrofishing Catch = 6 fish total, or 2.9/hour.

Size Structure: 2003 Length range = 3.5-16.5 inches.
2003 Average length = 11.2 inches.

2003 catch rates of largemouth bass (2.9/hour) are comparable to those found in 2002 (2.2/hour).

Northern pike

Abundance: 2003 Fall Electrofishing Catch = 1 fish total or .48/hour.

Size Structure: 2003 Length Range = N/A.
2003 Average Length = 27 inches.

The low number of northern pike sampled during this survey is typical of the electrofishing gear used, and is not a reflection of low population levels. The best northern pike population data is obtained using fyke nets set during the spring spawning season.

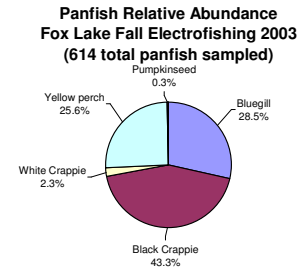
Muskie

Abundance: 2003 Fall Electrofishing Catch = 2 fish total or .96/hour.

Size Structure: 2003 Length Range = 22.0-22.2 inches.
2003 Average Length = 22.1 inches.

Panfish Summary

The panfish community in Fox Lake is dominated by a large black crappie population, as well as smaller populations of white crappie, bluegill, and yellow perch. Other panfish species present in the lake include pumpkinseed and green sunfish.

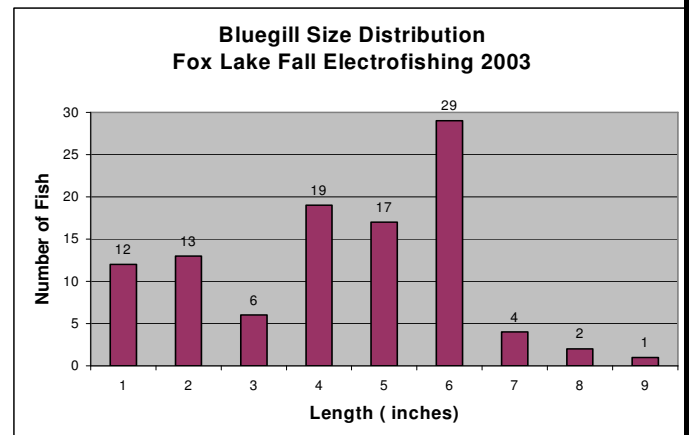


Bluegill

Abundance: 2003 Fall Electrofishing Catch = 175 fish total, 84.1/hour.

Size Structure: 2003 Length range = 1.6-9.3 inches.
2003 Average length = 4.7 inches.

Of the total 175 bluegill sampled, length measurements were taken on 103 fish. Of those measured, 35% were greater than 6 inches in length. Six-inch bluegill comprised the majority (28%) of the measured fish sample.

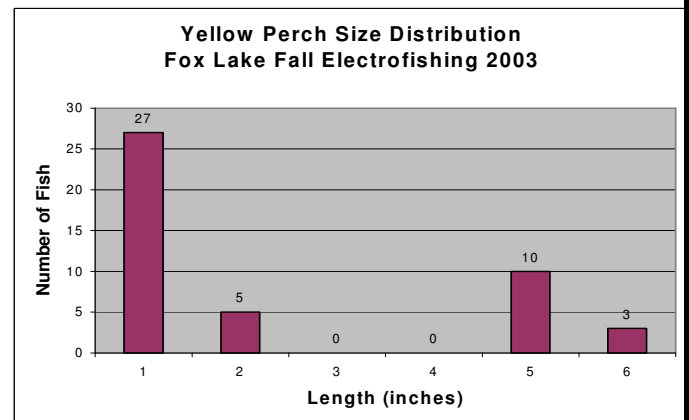


Yellow perch

Abundance: 2003 Fall Electrofishing Catch = 157 fish total, 75.5/hour.

Size Structure: 2003 Length range = 3.3-8.1 inches.
2003 Average Length = 4.7 inches.

Length measurements were taken on 45 of the total 157 yellow perch sampled. Of the 45 fish measured, 60% were less than 2 inches in length. This serves as evidence of a successful natural hatch of yellow perch produced during the spring of 2003.



Black crappie

Abundance: 2003 Fall Electrofishing Catch = 266 fish total, 127.9/hour.

Size Structure: 2003 Length range = 2.2-9.6 inches.
2003 Average length = 6.8 inches.

White crappie

Abundance: 2003 Fall Electrofishing Catch 14 fish total, 6.7/hour.

Size Structure: 2003 Length range = 2.7-9.8 inches.
2003 Average Length = 6.3 inches.

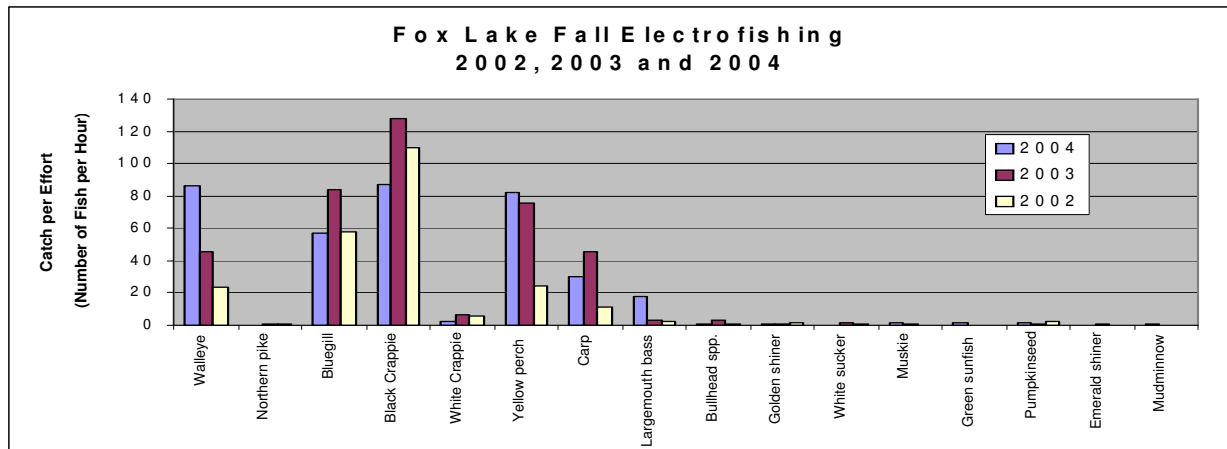
Forage Species

Other species collected during 2003 fall electrofishing included golden shiner, emerald shiner, white sucker, common carp, and yellow, brown and black bullhead. Adult carp catch rates were 45.2/hour, an increase from 11.1/hour in 2002. Bullhead species ranged in size from 9.5 to 11.1 inches.

Fox Lake Fall Electrofishing Summary Report – 2004

Fall Electrofishing - Defined

Fall electrofishing was conducted on Fox Lake in Dodge County on October 14, 2005. Fall electrofishing is conducted using a large boomshocker boat during the fall allowing for the collection of young-of-the-year (YOY) and adult bass and walleye that are often under sampled by other gear types. In order to standardize fisheries data, total effort, in the form of time spent shocking and/or miles of shoreline shocked is recorded. For this survey, the total effort expended was 2.08 hours and the following stations were sampled: 1.) Inlet of Cambria Creek south (25 minutes), 2.) North side of Chief Kuno Trail (20 minutes), 3.) South side of Chief Kuno Trail (20 minutes), 4.) South shore of The Jug to outlet (20 minutes), 5.) Elmwood Island (20 minutes), 6.) Green Bell tavern to Maple Point (20 minutes). Lengths and scale samples were taken from a subset of fish and all fish were returned to the lake. This report highlights the findings of 2004 fall electrofishing with comparisons between 2003 fall electrofishing where applicable. Compiled by: Laura Stremick-Thompson, DNR Fisheries Biologist, N7725 Hwy 28, Horicon WI 53032. Phone (920) 387-7876 or Laura.Stremick-Thompson@dnr.state.wi.us.



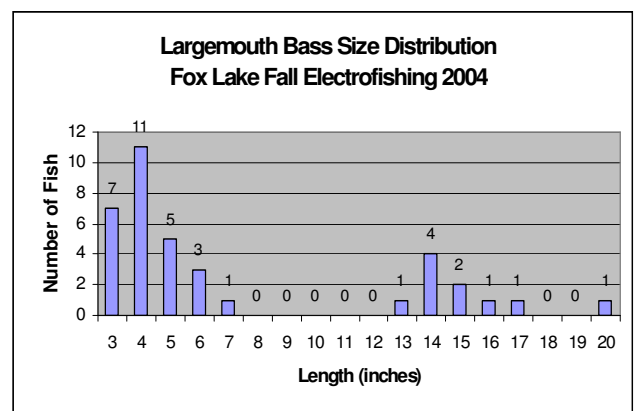
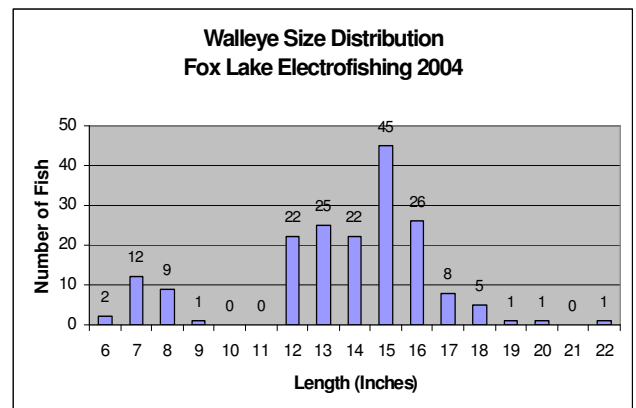
Gamefish Summary

Walleye

Abundance: 2004 Fall Electrofishing Catch=180 total fish, or 86.5 fish/hour.
2003 Fall Electrofishing Catch = 95 total fish, or 46 fish/hour.

Size Structure: 2004 Length range = 6.5-22.8 inches.
2003 Length range = 4.0-20.0 inches.
2004 Average Length = 14.1 inches.
2003 Average Length = 9.2 inches.

Walleye catch rates for 2004 fall electrofishing were 86.5/hour, up from 46/hour in 2003 and 24/hour in 2002. The number of young-of-the-year (YOY) walleye under 10 inches in length was 11.5/hour in 2004, 25/hour in 2003, 13.8/hour in 2002 and 8.2/hour in 2000 fall electrofishing. In 2004, DNR stocked 130,000 small fingerling walleye (1.4-inch ave. length) into Fox Lake.



Largemouth bass

Abundance: 2004 Fall Electrofishing Catch = 37 fish total, or 17.8 fish/hour.
2003 Fall Electrofishing Catch = 6 fish total, or 2.9 fish/hour.

Size Structure: 2004 Length range = 3.1-20.4 inches.
2003 Length range = 3.5-16.5 inches.
2004 Average length = 7.7 inches.
2003 Average length = 11.2 inches.

Largemouth bass catch rates for 2004 fall electrofishing were 17.8/hour, up from 2.9/hour in 2003 and 2.2/hour in 2002.

Northern pike

Abundance: 2004 Fall Electrofishing Catch = 0 fish total
2003 Fall Electrofishing Catch = 1 fish total or .48 fish/hour.

Size Structure: 2004 Length Range = N/A
2003 Average Length = 27 inches.

The low number of northern pike sampled during this survey is typical of the electrofishing gear used, and is not a reflection of low population levels. The best northern pike population data is obtained using fyke nets set during the spring spawning season.

Muskie

Abundance: 2004 Fall Electrofishing Catch = 4 fish total or 1.9/hour.

2003 Fall Electrofishing Catch = 2 fish total or .96/hour.

Size Structure: 2004 Length Range = 25.0-31.2 inches.

2003 Length Range = 22.0-22.2 inches.

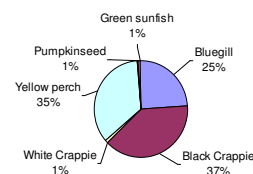
2004 Average Length = 28.1 inches.

2003 Average Length = 22.1 inches.

Panfish Summary

The panfish community in Fox Lake is dominated by a large black crappie population, as well as smaller populations of white crappie, bluegill, and yellow perch. Other panfish species present in the lake include pumpkinseed and green sunfish.

**Panfish Relative Abundance
Fox Lake Electrofishing 2004
(481 total panfish sampled)**



Bluegill

Abundance: 2004 Fall Electrofishing Catch = 118 fish total, or 56.7/hr.

2003 Fall Electrofishing Catch = 175 fish total, 84.1/hour.

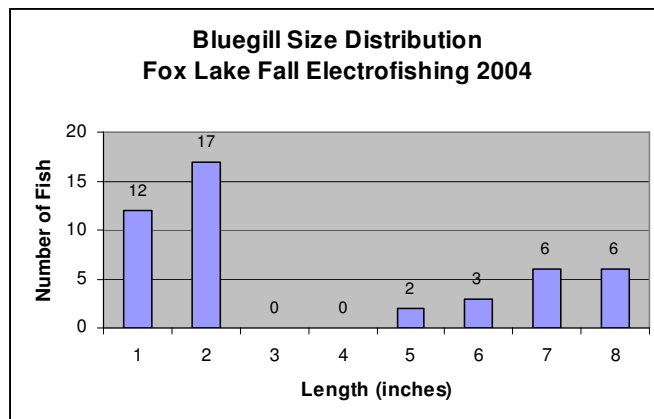
Size Structure: 2004 Length range = 1.2-8.9 inches.

2003 Length range = 1.6-9.3 inches.

2004 Average length = 4.0 inches.

2003 Average length = 4.7 inches.

Length measurements were taken on 46 of the total 118 bluegill sampled, of which 33% were greater than 6 inches in length.



Yellow perch

Abundance: 2004 Fall Electrofishing Catch = 171 fish total, 82.2/hour

2003 Fall Electrofishing Catch = 157 fish total, 75.5/hour.

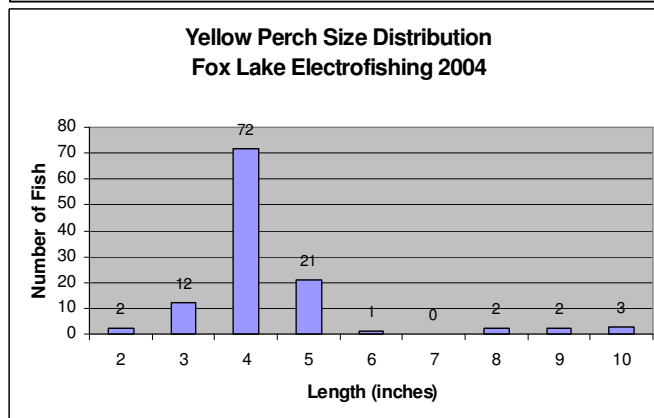
Size Structure: 2004 Length range = 2.0-10.9 inches.

2003 Length range = 3.3-8.1 inches.

2004 Average length = 4.9 inches

2003 Average length = 4.7 inches.

Length measurements were taken on 115 of the total 171 yellow perch sampled. The majority of the fish measured were 4 inches (63%), and 5 inches (18%) in length.



Black crappie

Abundance: 2004 Fall Electrofishing Catch = 181 fish total, 87/hour.

2003 Fall Electrofishing Catch = 266 fish total, 127.9/hour.

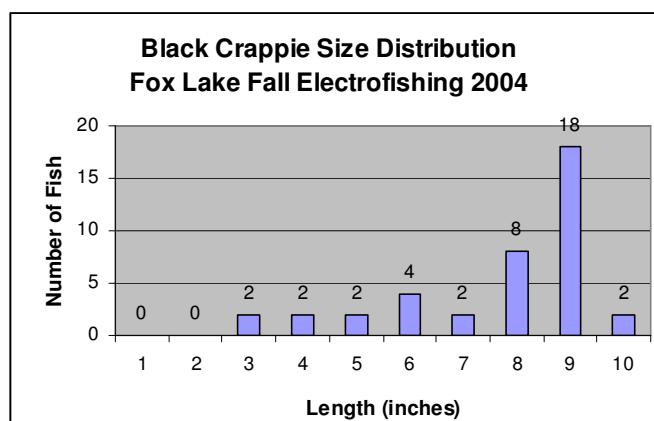
Size Structure: 2004 Length range = 2.0-11.5 inches.

2003 Length range = 2.2-9.6 inches.

2004 Average length = 7.3 inches.

2003 Average length = 6.8 inches.

Length measurements were taken on 159 of the total 181 black crappie sampled. Fifty percent of the fish measured were 9 to 10 inches in length.



White crappie

Abundance: 2004 Fall Electrofishing Catch 5 fish total, 2.4/hour.

2003 Fall Electrofishing Catch 14 fish total, 6.7/hour.

Size Structure: 2004 Length range = 4.7-10.5 inches.

2003 Length range = 2.7-9.8 inches.

2004 Average Length = 9.0 inches.

2003 Average Length = 6.3 inches.

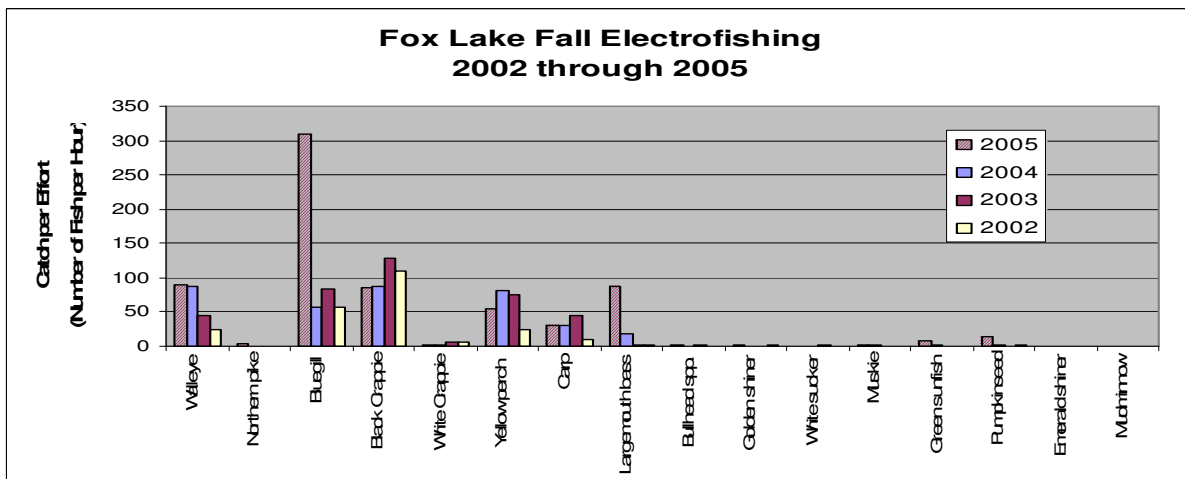
Forage Species

Other species collected during 2004 fall electrofishing included golden shiner, mudminnow, common carp, and yellow bullhead. Yellow bullhead catch rates were 1.4/hour and ranged in length from 10.7-11.1 inches. Adult carp catch rates were 29.8/hour, down from 45.2/hour in 2003.

Fox Lake Fall Electrofishing Summary Report – 2005

Fall Electrofishing - Defined

Fall electrofishing was conducted on Fox Lake in Dodge County on October 10, 2005. Fall electrofishing is conducted using a large boomshocker boat during the fall allowing for the collection of young-of-the-year (YOY) and adult bass and walleye that are often under sampled by other gear types. In order to standardize fisheries data, total effort, in the form of time spent shocking and/or miles of shoreline shocked is recorded. For this survey, the total effort expended was 2.08 hours and the following stations were sampled: 1.) Inlet of Cambria Creek south (25 minutes), 2.) North side of Chief Kuno Trail (20 minutes). 3.) South side of Chief Kuno Trail (20 minutes), 4.) South shore of The Jug to outlet (20 minutes), 5.) Elmwood Island (20 minutes), 6.) Green Bell tavern to Maple Point (20 minutes). Length measurements were taken from a subset of fish and all fish were returned to the lake. This report highlights the findings of 2005 fall electrofishing with comparisons between 2004 fall electrofishing made where applicable. Compiled by: Laura Stremick-Thompson, DNR Fisheries Biologist, N7725 Hwy 28, Horicon WI 53032. Phone (920) 387-7876 or Laura.Stremick-Thompson@dnr.state.wi.us.

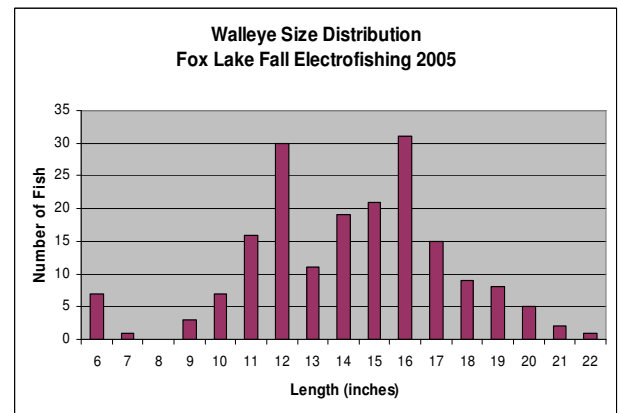


Gamefish Summary

Walleye

- Abundance:** 2005 Fall Electrofishing Catch = 186 total fish, or 89.2/hour.
2004 Fall Electrofishing Catch = 180 total fish, or 86.5/hour.
- Size Structure:** 2005 Length range = 6.0-22.8 inches.
2004 Length range = 6.5-22.8 inches.
2005 Average Length = 14.6 inches.
2004 Average Length = 14.1 inches.

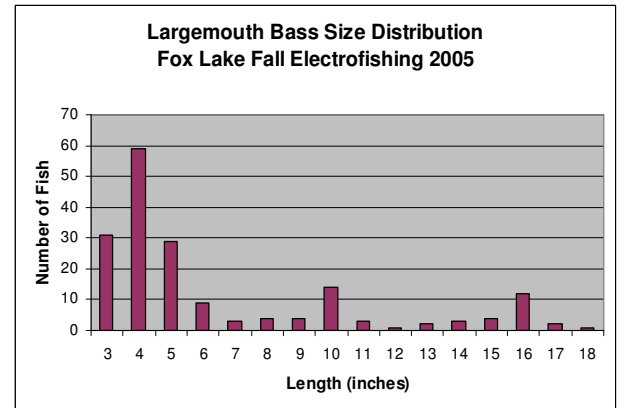
Walleye catch rates for 2005 fall electrofishing were 89.2/hr, compared to 86.5/hr in 2004. The number of young-of-the-year (YOY) walleye under 10 inches was 5.3/hr in 2005 and 11.5/hr in 2004 fall electrofishing. In 2005, DNR stocked Fox Lake with 129,850 small fingerling walleye (2-inch average length).



Largemouth bass

- Abundance:** 2005 Fall Electrofishing Catch = 182 fish total, or 87.4/hour.
2004 Fall Electrofishing Catch = 37 fish total, or 17.8/hour.
- Size Structure:** 2005 Length range = 3.0-18.0 inches.
2004 Length range = 3.1-20.4 inches.
2005 Average length = 6.9 inches.
2004 Average length = 7.7 inches.

Largemouth bass catch rates for 2005 fall electrofishing were 87.4/hour, up from 17.8/hour in 2004. The majority of fish measured (33%) were between 4 and 5 inches. The abundance of small bass is most likely due to an increase in spawning and rearing habitat provided by the abundant submerged aquatic plants that the lake experienced due to clearer water during summer 2005.



Northern pike

- Abundance:** 2005 Fall Electrofishing Catch = 8 fish total or 3.8 fish/hour.
2004 Fall Electrofishing Catch = 0 fish total
- Size Structure:** 2005 Average Length = 20.8 inches.
2004 Length Range = N/A.

The low number of northern pike sampled is a reflection of the electrofishing gear used, not low population levels. The best northern pike population data is obtained using fyke nets set during the spring spawning season. In 2005, DNR stocked Fox Lake with 12,500 small fingerling northern pike (2-3 inch average length).

Muskie

Abundance: 2005 Fall Electrofishing Catch = 4 fish total or 1.9/hour.
2004 Fall Electrofishing Catch = 4 fish total or 1.9/hour.

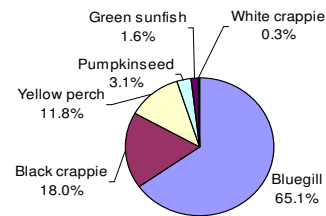
Size Structure: 2005 Length Range = 28.0-35.3 inches.
2004 Length Range = 25.0-31.2 inches.
2005 Average Length = 32.2 inches.
2004 Average Length = 28.1 inches.

DNR has not stocked muskies into Fox Lake since 2001.

Panfish Summary

The panfish community in Fox Lake is dominated by a large black crappie population, as well as smaller populations of white crappie, bluegill, and yellow perch. Other panfish species present in the lake include pumpkinseed and green sunfish.

**Panfish Relative Abundance
Fox Lake Fall Electrofishing 2005**

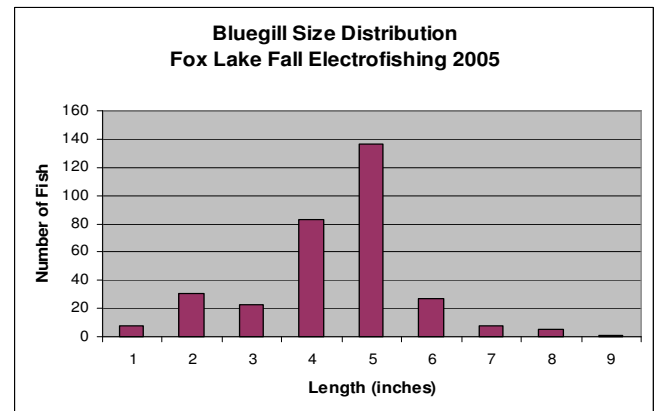


Bluegill

Abundance: 2005 Fall Electrofishing Catch = 643 fish total, 309/hour.
2004 Fall Electrofishing Catch = 118 fish total, or 56.7/hr.

Size Structure: 2005 Length range = 1.2-9.5 inches.
2004 Length range = 1.2-8.9 inches.
2005 Average length = 4.9 inches.
2004 Average length = 4.0 inches.

Length measurements were taken on 314 of the total 643 bluegill sampled, of which 13% were greater than 6 inches in length. The majority of bluegill measured (43%) were between 5 and 6 inches in length.

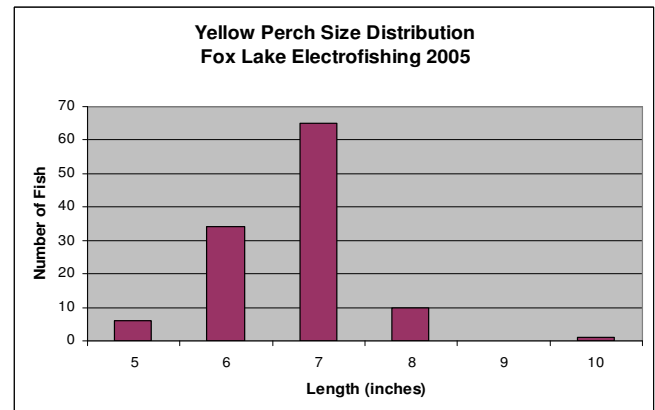


Yellow perch

Abundance: 2005 Fall Electrofishing Catch = 116 fish total, 55.7/hour.
2004 Fall Electrofishing Catch = 171 fish total, 82.2/hour.

Size Structure: 2005 Length range = 5.5-10.5 inches.
2004 Length range = 2.0-10.9 inches.
2005 Average length = 7.1 inches
2004 Average length = 4.9 inches.

Length measurements were taken on all 116 yellow perch sampled. The majority (56%) of the fish measured were between 7 and 8 inches in length.

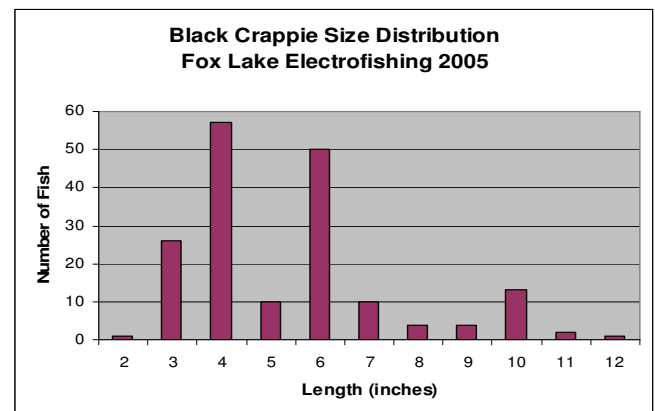


Black crappie

Abundance: 2005 Fall Electrofishing Catch = 178 fish total, 85.4/hour.
2004 Fall Electrofishing Catch = 181 fish total, 87/hour.

Size Structure: 2005 Length range = 2.5-12.0 inches.
2004 Length range = 2.0-11.5 inches.
2005 Average length = 5.8 inches.
2004 Average length = 7.3 inches.

Length measurements were taken on all 178 black crappie sampled. The majority of the fish sampled (32%) were between 4 and 5 inches in length.



White crappie

Abundance: 2005 Fall Electrofishing Catch 3 fish total, 1.4/hour.
2004 Fall Electrofishing Catch 5 fish total, 2.4/hour.

Size Structure: 2005 Length range = 4.6-11.2 inches.
2004 Length range = 4.7-10.5 inches.
2005 Average Length = 6.8 inches.
2004 Average Length = 9.0 inches.

Other Species

Other species sampled during 2005 fall electrofishing included golden shiner, common carp, and yellow and black bullhead. 2005 yellow bullhead catch rates were .96/hr with lengths between 6.0-8.2 inches. 2005 carp catch rates were 30.7/hr, compared to 29.8/hr in 2004.