



Rome Pond WA, Jefferson County Purple Loosestrife Locations

Prepared by: Mike Alaimo and Jeanne Scherer

7/8/17



Purple Loosestrife Project Overview:

Objective: Assess Purple Loosestrife populations on Rome Pond WA, determine an eradication strategy, and implement the strategy.

Strategy: Collect Purple Loosestrife hosts, infect with beetles, and seed the infected plants back into the Rome Pond WA. Monitor and repeat as necessary to curb the spread and ultimately remove the Purple Loosestrife population.

Implementation:

4/13/17: Mike Alaimo (WWA) and Jeanne Scherer (DNR) surveyed the locations of purple loosestrife on all water accessible locations of the WA.

4/22/17: Better photos were taken and improved mapping of the population by Mike Alaimo (WWA).

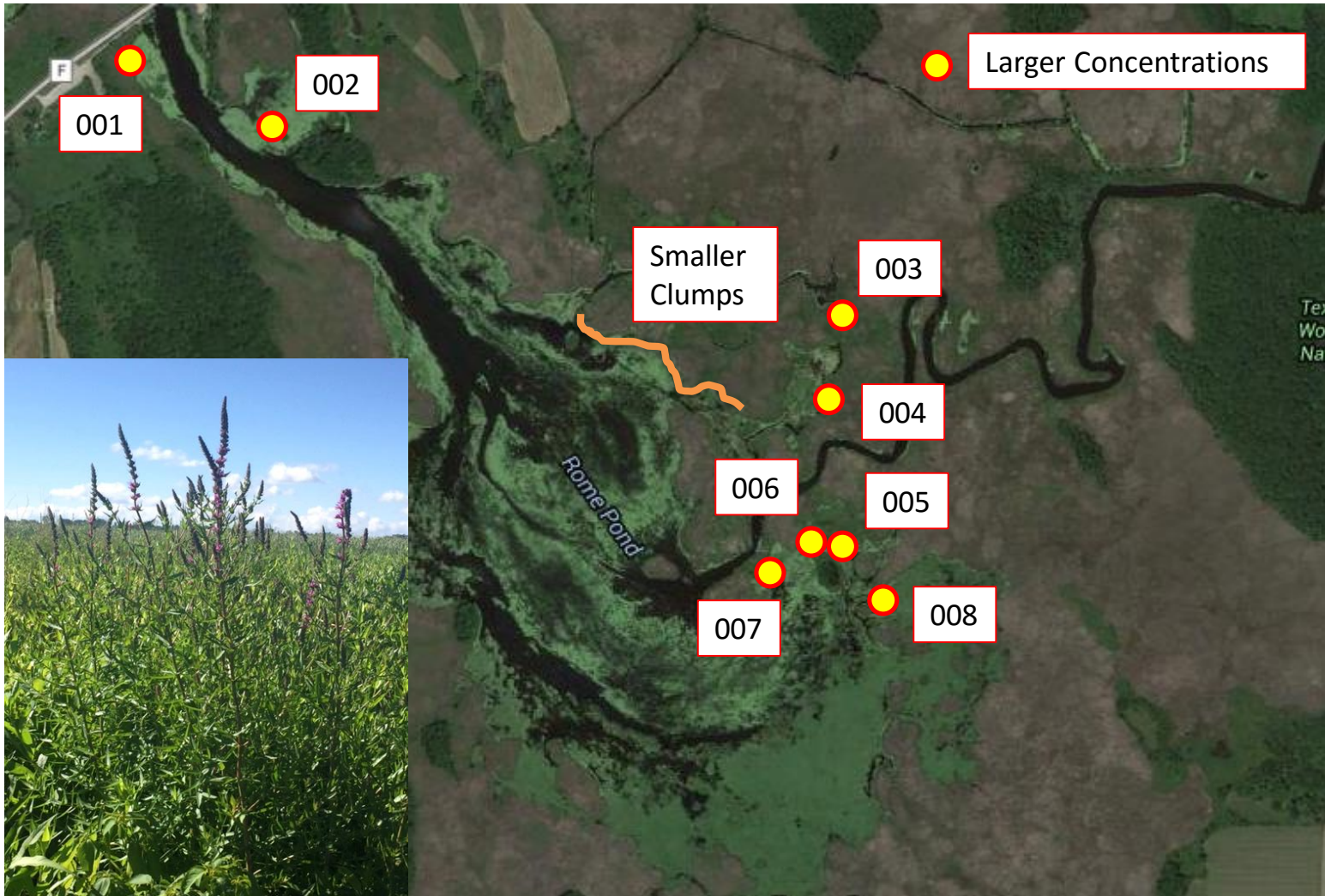
5/11/17: Mike Alaimo (WWA), Ron Churchill (WWA), Anne Churchill (WWA) and Jeanne Scherer (DNR) removed 51 plants from the WA in 1.5 hours.

5/11/17 – 7/5/17: Jeanne Scherer (DNR) and Lake Mills DNR Team (Sam Jonas, Craig Kopacek, and Adam Holcomb) potted, netted, released beetles and tended the plants.

7/5/17: Mike Alaimo (WWA), TJ Schnulle (WWA), Ron Churchill (WWA), Anne Churchill (WWA), Jeanne Scherer (DNR), Taylor Steager (DNR), Sam Jonas (DNR, and Craig Kopacek (DNR), transported and seeded the WA with 44 beetle infected plants.



Purple Loosestrife Locations: Overview Map





Rome Pond, Jefferson County

7/8/17

Purple Loosestrife Locations: Mapped on 4/13/17 and 4/22/17





Rome Pond, Jefferson County

7/8/17

Purple Loosestrife Locations: Mapped on 4/13/17 and 4/22/17





Rome Pond, Jefferson County

7/8/17

Purple Loosestrife Locations: Mapped on 4/13/17 and 4/22/17





Rome Pond, Jefferson County

7/8/17

Purple Loosestrife Removal of Host Plants: 5/11/17



Emergent
Loosestrife





Rome Pond, Jefferson County

7/8/17

Purple Loosestrife Tending at Lake Mills: 5/11/17 through 7/5/17





Rome Pond, Jefferson County

7/8/17

Purple Loosestrife Loading onto Boats: 7/5/17





Rome Pond, Jefferson County

7/8/17

Purple Loosestrife Beetle Seeding on Rome WA: 7/5/17

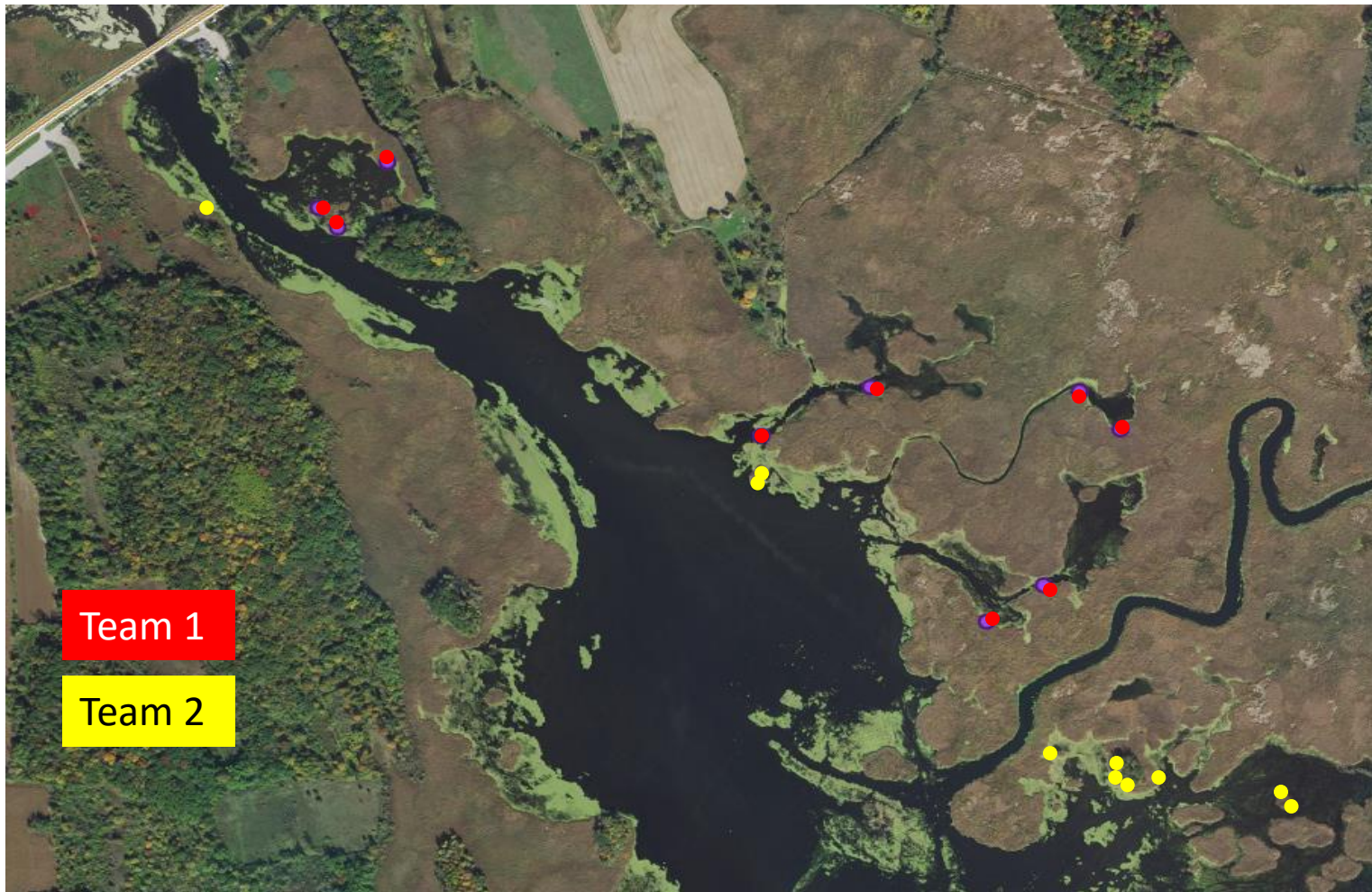




Rome Pond, Jefferson County

7/8/17

Purple Loosestrife Beetle Seeding Locations: 7/5/17





Rome Pond, Jefferson County

7/8/17

Purple Loosestrife Beetle Seeding Locations: 7/5/17

Team 1			
Latitude	Longitude	Plants	Pots
42.9846111	-88.6118905	4	no pots
42.9839962	-88.6130743	2	yes
42.983718	-88.6127531	1	yes
42.9781607	-88.6018714	2	yes
42.9786486	-88.6008927	2	on one
42.9807802	-88.5995439	2	on one
42.9813119	-88.6002228	3	yes
42.9807635	-88.6056352	2	no pots
42.9814137	-88.6037714	1	yes
Channel to Middle Pothole		1	tied with yellow rope

Team 2			
Latitude	Longitude	Plants	Pots
42° 58' 33" N	88° 35' 49" W	3	yes
42° 58' 33" N	88° 35' 49" W	2	yes
42° 58' 32" N	88° 35' 48" W	3	yes
42° 58' 34" N	88° 35' 60" W	1	yes
42° 58' 34" N	88° 35' 60" W	4	yes
42° 58' 34" N	88° 35' 60" W	4	yes
42° 58' 35" N	88° 35' 60" W	2	yes
42° 58' 49" N	88° 36' 21" W	1	yes
42° 58' 49" N	88° 36' 17" W	2	yes
42° 58' 3" N	88° 36' 54" W	2	yes



Rome Pond, Jefferson County

7/8/17

Purple Loosestrife Beetle Seeding Locations: Team 2 Pics 7/5/17

