

LAKE SINISSIPPI

SHORELINE EROSION REPORT



PREPARED FOR:

Lake Sinissippi Association
Gary Knipper, President
N4380 Lakeview Road
Hustisford, Wisconsin 53034

December 21, 2005

PN: 05032

INTRODUCTION

Shoreline erosion can be a serious source of sediment into Lake Sinissippi. Much of the mud just off the shoreline may have come from shoreline erosion. This report is a guide for shoreline restoration and erosion prevention, summarizes the results of the shoreline inventory, and provides storm-wave height calculations for selected parcels on Lake Sinissippi according to procedures outlined in NR 328. The project, which is being funded through a Lake Planning Grant from the Wisconsin Department of Natural Resources (WDNR), focuses on shoreline erosion from developed properties although information for undeveloped properties will also be included.

Under the newly adopted Wisconsin Administrative Code NR 328, the type of shoreline protection that can be used by property owners is regulated through permits from the WDNR. To be eligible for a permit for certain types of shoreline protection, your property must have a specific Erosion Intensity (EI) index score. The EI index identifies the degree of wave energy that is attacking a shoreline and how susceptible that shoreline is to erosion. An EI index will be calculated for each property on the lake. The EI index will help identify properties that are experiencing erosion problems or that may be susceptible in the future.

As part of the plan, each property will be inventoried. Some of the work will be based on measurements made from available maps of the lake, and others will be based on an inventory of the shoreline. Measurements that were made in the field include:

- Bank height (height from the bank toe to the top of the bank)
- Bank composition (characteristics of soil)
- Influence of adjacent structures (degree of armoring by a seawall or rock rip-rap)
- Aquatic vegetation (type and abundance of vegetation off shore)
- Bank vegetation (type and abundance of shoreline vegetation)
- Bank stability (estimate of stabilization by natural vegetation)
- Boat wakes (proximity to and use of boat channels)

The firm of Hey and Associates, Inc. from Brookfield, WI conducted the shoreline erosion inventory in June and August of this year. Their staff walked the shoreline or observed properties from a boat while making a few simple observations. Dark green shirts that have the Hey and Associates logo identified the staff. Staff also had company IDs. Each property owner should receive a letter containing the details of their shoreline survey.

The shoreline survey was used to develop a plan that will categorize properties based on their potential for erosion and the type of shore protection that best protects their property and is eligible for permits under the new WDNR rules. Shore protection methods evaluated include:

- Biological (stabilization using native vegetation and coconut fiber logs)
- Vegetated armoring (stabilization using bio-engineering methods and rock)
- Traditional rip-rap (stabilization using rock armoring)
- Seawalls (rock, wood or concrete walls)

The plan only makes voluntary recommendations for residents to consider. Under the plan, no one will be required to take any action or change any existing shore protection.

Storm-wave height (SWH) is an additional WDNR approved method to determine the amount of erosion occurring on your property. It is less thorough than the EI method and calculated with a mathematical

equation developed by researchers that takes into account storm wind speeds, the unobstructed distance from your property across the lake or the fetch, and the average depth along the fetch. Based on the calculated storm-wave height, your property can be classified as a low, moderate, or high energy site.

HISTORY OF LAKE FORMATION AND PHYSICAL DESCRIPTION

Lake Sinissippi is an impoundment of the Rock River created in 1845 when the dam was built in Hustisford. Prior to construction of the dam, the area was a flat wetland basin through which the Rock River meandered. Soils in the basin were largely peat. The reservoir created by the dam was shallow with unstable, marshy shorelines that eroded rapidly. In 1939, the dam was raised 1.43 feet to its present elevation, adding to shoreline erosion. The size of the lake in 1939 was 2,300 acres. Over the past 6 decades, water erosion has caused riparian wetlands and 4 of the original 12 islands to disappear, resulting in the present lake area of 2,855 acres.

Table 1 outlines the general physical characteristics of the lake. A cross-section of the lake would resemble a wide, shallow pan, with average water depth varying between 4 and 5 feet. The maximum water depth is 6 feet, with 8-foot holes in the river north of the oxbow and in the river before the dam in Hustisford. The lake bottom is mainly composed of silt that washed into the lake from the surrounding watershed and shore erosion. Thickness of the sediment layer covering most of the lake bottom area is 6 inches to 2 ½ feet; several spots have silt depth that exceeds 8 feet. Some shorelines along the eastern shore, around some of the islands and along shores with steeper slopes have firm, gravelly substrates that are beneficial for fish spawning. Due to the large, shallow open water area and silt bottom, periods of high winds and wave action caused by boats re-suspend sediment resulting in murky or turbid water.

The Lake Sinissippi shoreline along the south and east is extensively developed with seasonal and permanent homes. In recent years many of the lower value properties have been improved or replaced by higher value homes. Condominium and apartment complexes have been developed within the Village of Hustisford on the south end of the lake. The undeveloped land that remains along the north and west shores is farmland, marsh and state conservancy. Sanitary sewer districts serve properties on Butternut Island, Sinissippi Point and Arrowhead Point, and along the east shoreline. Lake front properties within the Village of Hustisford are served by the village sanitary sewer system.

The lake is heavily used for water-oriented recreation; particularly pleasure boating, canoeing, bird watching and water skiing. The marshy bays are used extensively for waterfowl hunting. Some fishing occurs on the lake, but is relatively light due to the poor condition of the fish population. Public boat and lake access is provided by municipal facilities located in Horicon and Hustisford, as well as several small town sites.

TABLE 1 - Physical Characteristics of Lake Sinissippi

Parameter	Lake Sinissippi
Surface Area (open water)	2,855 acres
Watershed Area	511 sq. miles
Watershed to Lake Area Ratio	115:1
Maximum Depth	8 feet
Mean Depth	4.5 feet

Watershed and Ecological Characteristics

Lake Sinissippi has a large watershed area of 511 square miles and a watershed/lake area ratio of 115:1. Impoundments with watershed/lake ratios greater than 10:1 are generally very fertile. The Rock River watershed is intensively farmed for production of agricultural crops. About 90% of the lake watershed area lies above the Horicon Dam, including the Horicon Marsh and Rock River headwaters. The Dead Creek subwatershed and adjacent lake area with smaller tributaries comprise the remaining 10% of the watershed. Much of the once abundant wetlands in the watershed have been converted to cropland by ditching or tiling. The loss of wetlands, combined with exposed soils and intensive farming, contributes to sediment runoff reaching the lake during snowmelt or rain.

Soils in the Lake Sinissippi area are made of a combination wetland soils in the lowland areas and glacial soils on the glacial moraines that form the upland features. Wetland soils are predominantly adjacent to the lake. They are poorly drained, nearly level, and easily eroded soils commonly found in lake basins and on flood plains. They are subject to frequent long periods of inundation. Most of the upland areas adjacent to Lake Sinissippi are located on glacial moraines. These soils are all well drained with upper layers of grayish brown silt loam underlain by sandy loam and glacial till. The soils are well suited to crops such as corn, small grains, and grasses, and pasturing and production tree stands. In the Lake Sinissippi area, most of the upland soils have been or are being used for agricultural production.

The riparian wetlands around Lake Sinissippi have undergone varied expansion and contraction during the 160 years that the impoundment has been in place. Wetlands in several small embayments in the lake have contracted over the years due primarily to high water levels. Expansions of marsh fringe have generally been associated with lowering of the lake level as a consequence of either drought or a planned drawdown.

Following the lake drawdown that began in 1972, vegetation growing on the exposed lake bottom covered over 1,400 acres. The vegetation areas were comprised predominantly of cattails (*Typha* spp.), whose beds expanded out onto the exposed mudflats. The balance of the lake bottom under drawdown condition was covered with water to a depth of an inch to a couple of feet. Following return to normal lake levels, nearly 10 years of inundation was necessary to cause recession of the cattail marsh to the edge configuration as seen today.

GOALS AND OBJECTIVES OF STUDY

Shoreline erosion is a problem on many Wisconsin lakes. Impoundments such as Lake Sinissippi are especially vulnerable to erosion because elevated water levels come into contact with soils that may not be naturally able to withstand wave energy. This study sponsored by the Lake Sinissippi Association has the following goals:

- Assign each property an Erosion Intensity and erosion energy category score as per the Wisconsin Administrative Code NR 328
- Develop alternatives for shoreline management options for each erosion intensity category
- Provide a list of potential native plants used in shoreline restorations
- Provide an overview on how home owners may integrate fish and wildlife habitat into their shorelines
- Review the permit application process for exemptions, general permits, and individual permits
- Provide an overview of sources for financial assistance

OVERVIEW OF SAMPLING METHODS AND EROSION INDEX

Lakeshores bear the brunt of breaking waves, currents, and ice. Even though these are largely natural processes, these forces attack your shoreline and dislodge sediment particles and transport them into your lake bottom. Naturally occurring erosion is a slow process that allows plants to adjust to changing conditions, and soil loss is usually at a minimum. Natural disturbances (floods and windstorms) and human disturbances (construction in near shore areas and removing vegetation) usually accelerate erosion processes. Impoundments are especially vulnerable to shoreline erosion because soils have relatively little exposure to erosive forces. Natural lakes have been exposed to erosive forces for many years and shorelines have developed to naturally resist excessive erosion in many cases.

Indications of erosion problems include large areas of bare soil, rapid shoreline recession, or muddy water near the shoreline after a rainstorm. The SWH and shoreline EI index included in NR 328 are designed to measure lake or shoreline properties that contribute to accelerated erosion. The SWH and EI estimate the amount of potential wave energy attacking your shoreline and its susceptibility to erode. Each developed property received a shoreline EI index score that is associated with an energy category – high, moderate, or low. The significance of each energy category will be discussed later in the report. All parcels with an EI energy rating in the “low” category also received a SWH energy score.

The shoreline inventory occurred in two phases. The first phase evaluated characteristics of your property using digitized lake maps and computer mapping software. The average fetch, water depth 20 feet from shore, water depth 100 feet from shore, shoreline geometry, and shore orientation were determined to generate the first set of index scores.

- *Average fetch* is the distance across open water to opposite shore at 45° from the perpendicular of your shoreline. Average fetch estimates the amount of potential wave energy affecting your shoreline (Figure 1).
- *Shoreline geometry* is the general shape of the shoreline on your property and 200 yards on either side. Shoreline is classified as coves or bays, irregular or straight shoreline, and headland or point or island.
- *Shore orientation* is the geographic direction the shoreline faces (Figure 2). Shorelines facing the west to northwest experience heavy winds and increased wave energy due to predominant weather patterns.
- *Water depth at 20 and 100 feet from shore* was determined using a 1-foot contour bathymetric map.

The second phase of the project was to visit each developed property and inventory the remaining characteristics important to calculate your index score. This occurred over June 21st – 23rd, 2005. Bank height, bank composition, influence of adjacent structures, amount of aquatic vegetation, bank vegetation, bank stability, and proximity to boat wakes were measured following the EI Score Worksheet included in NR 328.08(2).

- *Bank height* – measure from the bank-toe to the bank-lip (Figure 3).
- *Bank composition* – sediment composition of bank.
- *Influence of adjacent structures* – nearby structures that may cause flank erosion.
- *Aquatic vegetation* – amount of offshore submergent, floating leaf, or emergent vegetation.
- *Bank vegetation* – type and abundance of vegetation occurring on the bank and near bank lip.

- *Bank stability* – degree the bank and area within 10 feet of bank are stabilized by vegetation.
- *Proximity to boat wakes* – degree a property is affected by boating channels.

Storm-wave height is an additional WDNR approved method to determine the amount of erosion occurring on your property. It is calculated with a mathematical equation developed by researchers that takes into account storm wind speeds, the unobstructed distance from your property across the lake or the fetch, and the average depth along the fetch. Based on the calculated storm-wave height, a property can be classified as a low, moderate, or high energy site. The WDNR SWH energy calculator¹ and a WDNR lake map of Lake Sinissippi was used to determine storm-wave height. The SWH was not calculated for every property on the lake. It was calculated for properties that received an EI score in the low category. Scores for these parcels with a low EI rating were compared to SWH energy ratings to determine how often the SWH method overestimates the energy category.

Results and Alternatives for Management

The three categories generated by the EI and SWH scores are high, moderate, and low energy sites. NR 328 defines a high energy site with an EI greater than 67, a moderate energy site scores between 48 and 67, and a low energy site scores 47 or lower. All properties on Lake Sinissippi fall into the low and moderate energy categories so those options will be discussed in detail (Figure 4).

The energy category is important because it determines which shoreline protection structures you are eligible to install on your property (Table 2). High energy sites are eligible to install biological controls, vegetated armoring, traditional riprap, or a seawall. Moderate energy sites are eligible to install biological controls, vegetated armoring, or traditional riprap. Low energy sites are eligible to install biological shoreline erosion controls. Maps showing each property's energy category and address are found in Figures 5-7.

The average EI score for the properties on Lake Sinissippi is 35, which falls into the low energy category. A smaller portion of properties fell into the moderate category (Table 3). No properties on Lake Sinissippi were classified as high energy. The summary statistics for the survey show that general lake morphological characteristics and existing bank protection are driving EI scores towards the low energy category. In general if a scoring category has a relatively small standard deviation it is constant at most properties (Table 4). Conversely, scores with a relatively high standard deviation are driving the differences between properties. For Lake Sinissippi, water depth at 20', water depth at 100' and bank height are relatively constant at all properties while the other parameters distinguish individual properties from each other.

The SWH energy category was calculated for each property receiving an EI score in the "low" category (Figure 8). The recalculations showed that the SWH method overestimated the wave energy category at 41% of the properties. In other words, 41% more properties on Lake Sinissippi would have been classified as moderate energy sites using the SWH method while the more detailed EI method classified those properties as low energy. A detailed list of each property and its energy rating category is located in Appendix A at the end of this report.

¹ <http://www.dnr.state.wi.us/org/water/fhp/waterway/erosioncalculator.shtml>

TABLE 2 - Eligible Activities per Shoreline Erosion Index Category

	Shoreline Erosion Index Category		
	Low	Moderate	High
Biological Controls	u	u	u
Vegetated Armoring		u	u
Traditional Riprap		u	u
Seawalls			u

Low Energy

A biological shoreline stabilization design might include a coconut fiber roll temporarily staked to the lake bottom combined with emergent macrophyte plantings in the eroded shoreline area. This is effective to protect the bank toe. The coconut fiber roll absorbs wave energy allowing for the establishment of plants (Figure 9). The plants will absorb wave energy and decrease bank erosion. Coconut fiber rolls may also be used directly on the shoreline. If your bank is eroding above the mean high water elevation, an alternate strategy using brush mattresses, live stake plantings, or brush layering may be more suitable for your property. Each of these techniques relies on establishing vegetation on your bank to minimize erosion as water flows over the bank or waves impact the shoreline. In the case of brush mattresses, live cut branches are placed along an eroding slope, anchored, and the ends are placed in a trench to allow them to form a root system. The root system will stabilize the bank and minimize erosion (Figure 10). In moderate energy areas, additional stabilization may be needed at the bank toe.

Installing biological control structures to reduce erosion have the added benefit of providing beneficial wildlife habitat. Incorporating a variety of native shoreline plants will attract a variety of birds, butterflies, and insects to your property (Table 5).

TABLE 3 - Erosion Index Category Membership for Lake Sinissippi

Erosion Index Category	
High	0.0%
Moderate	15.5%
Low	84.5%

TABLE 4 - Mean Scores and Standard Deviation of Erosion Index Scores for Lake Sinissippi

Shoreline Scoring Category	Mean	Standard Deviation
Average Fetch	3.35	1.55
<i>Water Depth 20' from Shore*</i>	1.96	0.19
<i>Water Depth 100' from Shore</i>	2.69	0.52
Shoreline Geometry	4.06	2.44
Shoreline Orientation	3.29	3.57
<i>Bank Height</i>	2.11	0.35
Bank Compostion	5.19	3.07
Bank Vegetation	1.04	1.65
Bank Stability	1.22	2.20
Influence of Adjacent Structures	1.45	0.82
Aquatic Vegetation	5.97	2.09
Influence of Boat Wakes	3.61	4.64
EIS Score	35.50	9.60

**Italics indicate relatively constant value for all properties.*

TABLE 5 - Shoreline plants to reduce erosion

Shrubs	Forbs and Grasses (Upland)
Red-twig dogwood	Pale purple coneflower
Silky dogwood	Yellow coneflower
Nannyberry	Butterflyweed
Hazelnut	Blazingstar
Black Willow	Wild bergamont
Pussy Willow	New England aster
Wetland	Stiff goldenrod
Joe-pye weed	Compass plant
Boneset	Black-eyed Susan
Cupplant	Indian grass
Turtlehead	Big Bluestem grass
Common arrowhead	Prairie cordgrass

Moderate Energy

Properties with a moderate energy rating may decide to install more aggressive erosion control structures such as vegetated armoring or traditional riprap. Traditional riprap is a blanket of stones applied over an existing shoreline to provide more resistance to erosion (Figure 11). An alternate to traditional riprap that offers comparable erosion control is vegetated armoring. Vegetated armoring is nearly as durable as riprap, but offers the distinct advantage of providing habitat for plants and animals. Vegetated armoring uses riprap, or other material, combined with vegetative plantings in drilled holes or in the cracks between the riprap (Figure 12).

Methods for Landowners to Integrate Fish and Wildlife Habitat into Shorelines

To improve wildlife habitat and increase the enjoyment of wildlife observers, plants that will attract a variety of birds, butterflies, and insects are recommended along the disturbed edges of the lake.

Tables 6 and 7 summarize some of the potential plants and shoreline management strategies that could be integrated into a native landscaping plan on developed properties to improve wildlife habitat.



Lake Sinissippi Shoreline – Vegetated Shoreline Areas

TABLE 6 - Plants to Attract Wildlife

Common Name	Species Name
Shrubs	
Red-twig dogwood	<i>Cornus stolonifera</i>
Silky dogwood	<i>Cornus amomum</i>
Nannyberry	<i>Viburnum lentago</i>
Hazelnut	<i>Corylus Americana</i>
Forbs (Upland)	
Pale purple coneflower	<i>Echinacea pallida</i>
Yellow coneflower	<i>Ratibida pinnata</i>
Butterflyweed	<i>Asclepias tuberosa</i>
Blazingstar	<i>Liatris spicata</i>
Wild bergamot	<i>Monarda fistulosa</i>
Wetland	
Joe-pye weed	<i>Eupatorium maculatum</i>
Boneset	<i>Eupatorium perfoliatum</i>
Cupplant	<i>Silphium perfoliatum</i>
Turtlehead	<i>Chelone glabra</i>

TABLE 7 - Shoreline enhancements for wildlife

Wildlife Habitat	
Enhancement	Benefit
Large, dead standing or cavity trees	Nesting and roosting for birds
Dying tress	Woodpecker food source
Seasonal pools and wetlands	Amphibian breeding
Logs and branches off-shore	Basking for turtles and cover for fish
Bank burrows	Dens for weasels, otters, and muskrats
Sandy soils	Nesting for turtles
Rock piles	Cover for snakes and mammals
Trees overhanging the water	Feeding perches for birds and cover for fish
Fallen logs on land	Salamander habitat

Permitting Overview

Wisconsin Administrative Code NR 328 subchapter I fulfills the purpose of establishing procedures to determine a shore erosion control project’s eligibility for a permit exemption, a general permit, or an individual permit under s. 30.12 (Table 8). Repairs are the only activity that will *potentially* be exempt from the permitting process because Lake Sinissippi is listed on the Natural Heritage Inventory as an “Area of Special Natural Resource Interest”. As a result, all new projects will require general or individual permits.

Rules are different for repairing an existing structure or building a new structure. As a general rule, if a structure is *greater than 50%* in tact, no permit is needed for repairs as long as the bank is not extended lakeward. Before beginning any project, contact your local WDNR Water Resource Management Specialist regarding permitting. If a structure is *less than 50%* in tact, any repairs will be considered new construction for permitting purposes. If you have an existing rip-rap shoreline or a seawall in an area of low energy, it is important that you keep it maintained. If it falls into a condition with more that 50% in disrepair, you will likely not be able to replace it with a similar structure under the new state rules.

TABLE 8 - Permit Requirements for Repairing and Installing New Shoreline Structures

	Shoreline Energy Category		
	Low	Medium	High
Repair riprap < 50% of total structure	None	None	None
Repair Riprap > 50%	Not Allowed	General or Individual	General Permit
Repair Seawall < 50%	None	None	None
Repair Seawall > 50%	Not Allowed	Not Allowed or Individual	Individual Permit
Biological Controls	General Permit	General Permit	General Permit
Vegetated Armoring	Not Allowed	General Permit	General Permit
Traditional Riprap	Not Allowed	Individual Permit	General Permit
Seawall	Not Allowed	Not Allowed	Individual Permit

The second step in the permitting process is to determine the energy category of the shoreline. NR 328 specifies that the shoreline energy may be calculated using the storm-wave height or the shoreline erosion index method. The storm-wave height method is a general estimate of shoreline energy while the shoreline EI method takes into account site-specific factors such as bank height and soil type. Storm-wave height was estimated using the WDNR website storm-wave height calculator². The EI index score was computed using the Erosion Intensity Score Worksheet included in NR 328³.

The third step in the permitting process is to select an appropriate control method based on the energy category (refer back to Table 2) and determine if you are eligible for a General Permit. Usually a General Permit will be issued if an erosion control structure is appropriate for a property's energy category. Eligibility can be determined using WDNR worksheets available online⁴. If a property owner wishes to build a shoreline erosion control structure that is not generally allowed, such as vegetated riprap in a low energy area, they will need to apply for an individual permit. It is important to note that a General Permit is considered a right of the property owner while an Individual Permit is a privilege that may be denied. Individual Permits will be granted by WDNR only if it is in the best interest of the public and does not harm the resource. Unless very compelling reasons exist to support an Individual Permit, property owners are encouraged to pursue activities requiring a General Permit. Individual Permit applications are also available online⁶.

To expedite a General Permit, property owners are encouraged to determine whether or not their project will affect wetlands, endangered or threatened resources, or cultural resources⁵. The Wisconsin Wetland Inventory lists wetlands that would affect a permit application. For information about wetlands on your property, contact Lois Simon, Wetlands Inventory Coordinator at (608) 266-8852. Maps are available for purchase. To check for endangered or threatened species in the proximity to their project, property owners should call the Bureau of Endangered Resources at the WDNR at (608) 266-7012 to request a Wisconsin Natural Heritage Inventory Endangered Resources Review Request Form 1700-047. Contact the State Historical Society at (608) 264-6579 and ask for a Natural Heritage Inventory Information Request Form to determine whether significant cultural resources are located near your property.

Dodge County also has a number of local ordinances that may apply to your property, so it is recommended that you contact your regional Water Quality Management Specialist and Dodge County Zoning and Planning Department to find out all permit application requirements. The WDNR contact is Dan Hunt who is located in Horicon at (920) 387-7878. David Carpenter may be reached in the Dodge County Planning and Development Office at (920) 386-3700 for local zoning requirements.

Overview of Available Financial Assistance

There are two state funded programs qualified lake associations or lake districts may utilize for shoreline restoration activities. They are the Lake Protection Grant Program and the Nonpoint Targeted Runoff Management Program. Each of these programs requires a qualified lake association or district to act as the grant sponsor and requires matching funds from the sponsor or other in-kind contributions.

² <http://dnr.wi.gov/org/water/fhp/waterway/erosioncalculator.shtml>

³ <http://www.dnr.state.wi.us/org/water/fhp/fish/nr328/>

⁴ <http://dnr.wi.gov/org/water/fhp/waterway/erosioncontrol.shtml>

⁵ Form 3500-108 Waterway General Permit Application and Approval bottom of page 1 of 4

The Lake Protection Grant Fund is governed by ss. 281.69 and 281.71 Wisconsin Statutes and chapter NR 191 Wisconsin Administrative Code. Grant awards may fund up to 75 percent of project costs up to a maximum grant amount of \$200,000. Due to the size and technical considerations of many projects, a pre-application meeting with the WDNR is recommended to confirm that the required management plan and permit applications are in place or will be applied for. This will ensure the application will be complete and can be evaluated and considered for funding. Restoring wetlands and shorelands that will protect a lake's water quality or its natural ecosystem are eligible for this program up to \$100,000 contribution by WDNR. Wetland incentive grants up to \$10,000 are eligible for state funding without cost share if the project is identified in the sponsor's comprehensive land use plan or is a lake management plan implementation project approved by the WDNR. These projects may include any projects that will protect or improve lakes. Sponsors should submit a copy of their lake management plan and the specific recommendation or recommendations it wants to fund to the WDNR for approval at least two months in advance of the May 1st application deadline. Plans must have been officially adopted by the sponsor and made available for public comment prior to submittal. The WDNR will review the plan and advise the sponsor on the project's eligibility and development of a lake protection grant application.

The Nonpoint Targeted Runoff Management Program is governed by ss. 281.65, Wisconsin Statutes and chapter NR 153 of the Wisconsin Administrative Code. Governmental units can be reimbursed up to 70 percent of eligible costs associated with installing Best Management Practices that limit or end nonpoint source run-off water pollution. Eligible activities and cost share responsibilities are outlined in chapter NR 154 of the Wisconsin Administrative Code. Grant awards cannot exceed \$150,000 and have a 2-year implementation time frame. As with most WDNR grant programs, these grants are highly competitive and not all eligible projects will receive funding.

Implementation Strategy

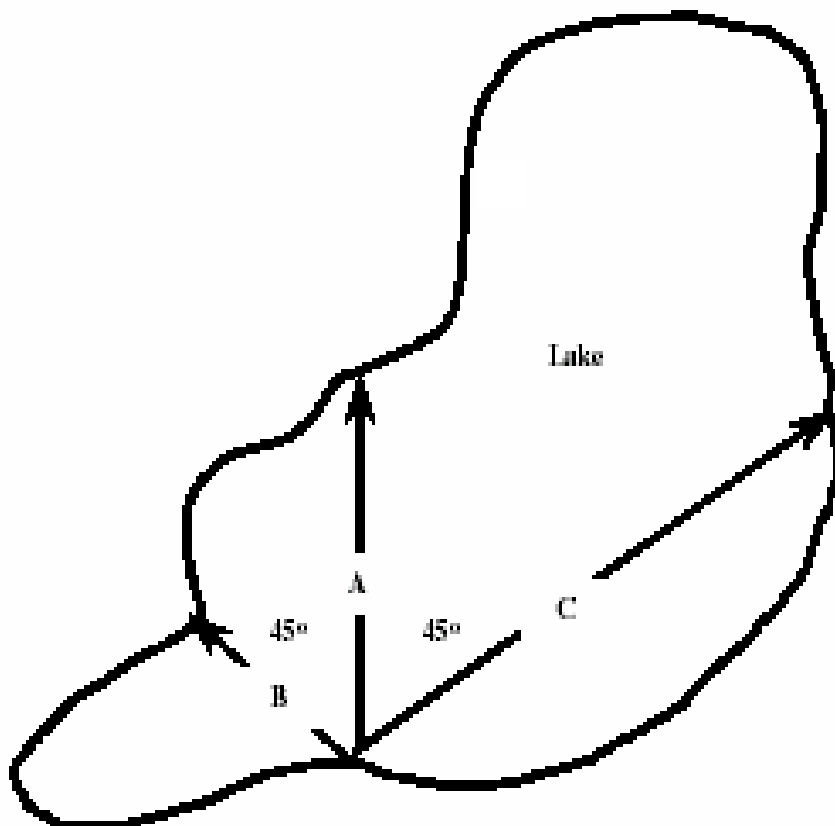
Participation in shoreline restoration activities as per the shoreline energy categories assigned by chapter NR 328 is voluntary. Recommendations in NR 328 become mandatory if a shoreline structure is less than 50 percent in tact and the shoreline property owner chooses to modify the existing structure(s). NR 328 also applies to new construction.

The first step to begin a shoreline restoration is to contact your neighbors to determine whether or not there is community interest in pursuing a restoration project. It is typical for property owners working together to receive better rates for larger projects. If there are properties that are difficult to access directly, it also may make construction easier using a common entrance to a project site. Less disturbed land near the lake will also cause less eroded material to enter the water during construction.

The next step is to contact a number of qualified landscape architects or engineers for a design suitable for their shoreline. Make sure to communicate a property's eligible shoreline structures as per NR 328 to ensure the design is appropriate for a property's energy category. Each design should also include an erosion control plan. Once an appropriate design is selected, permits should be acquired. Most projects should require a general permit prior to construction. The permitting process was discussed earlier in the report, so please refer to the "Permitting Overview" section of this report for more information.

FIGURES

FIGURE 1 - Average Fetch Calculation for Erosion Intensity Index (Source: WDNR)



$$\text{Average Fetch} = (B + C) \div 2$$

FIGURE 2 - Determination of Wind Exposure for Erosion Intensity Index (Source: WDNR)

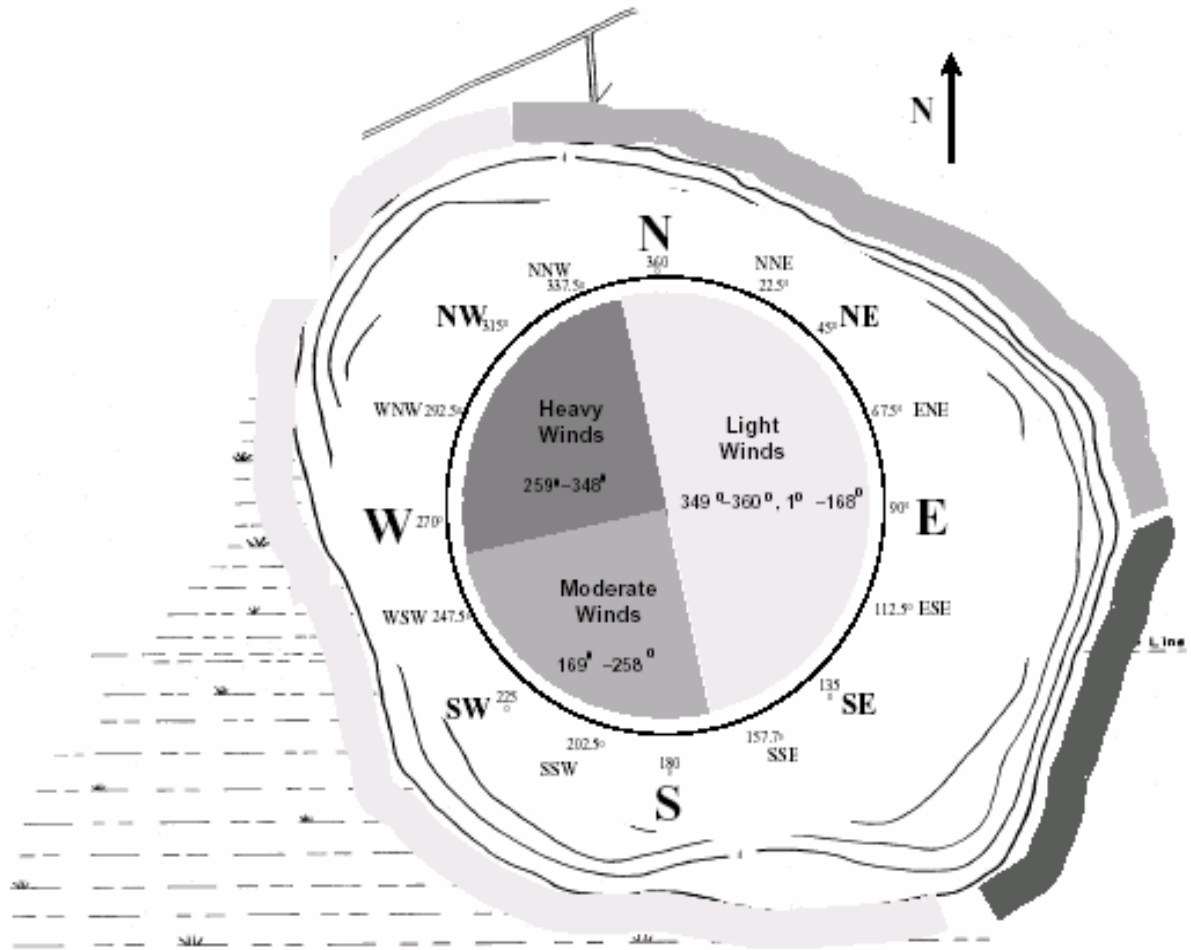
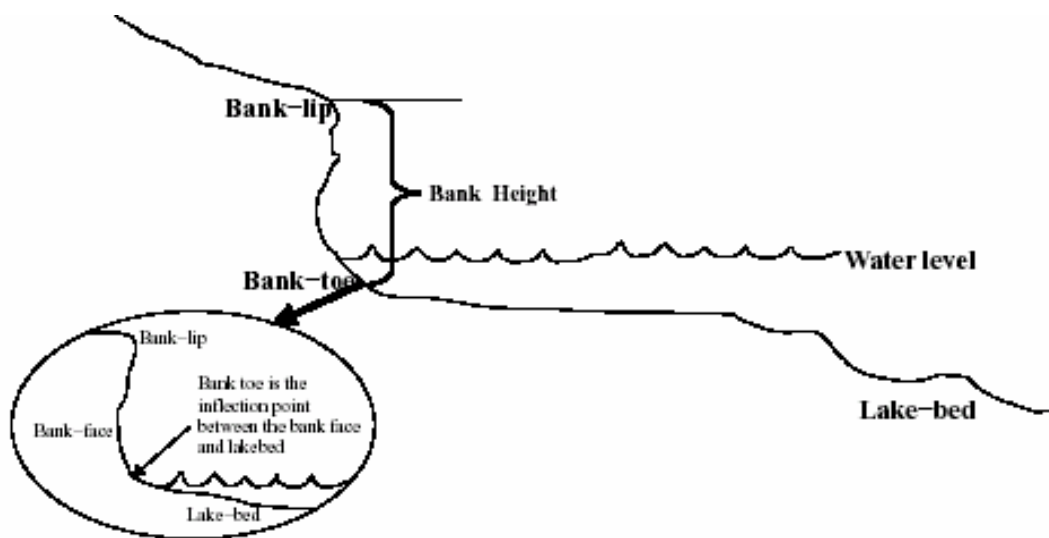


FIGURE 3 - Bank height measurement (Source: WDNR)



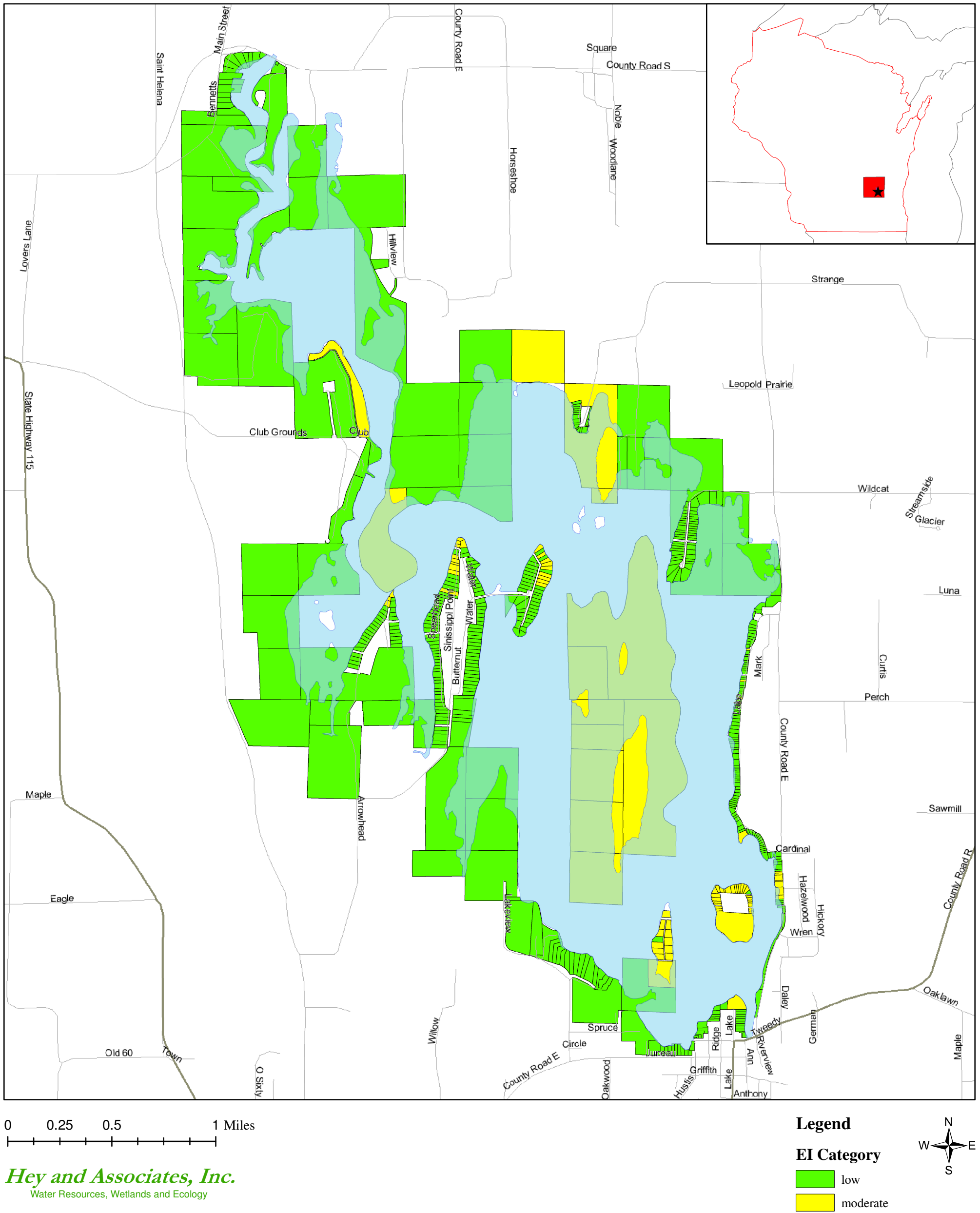
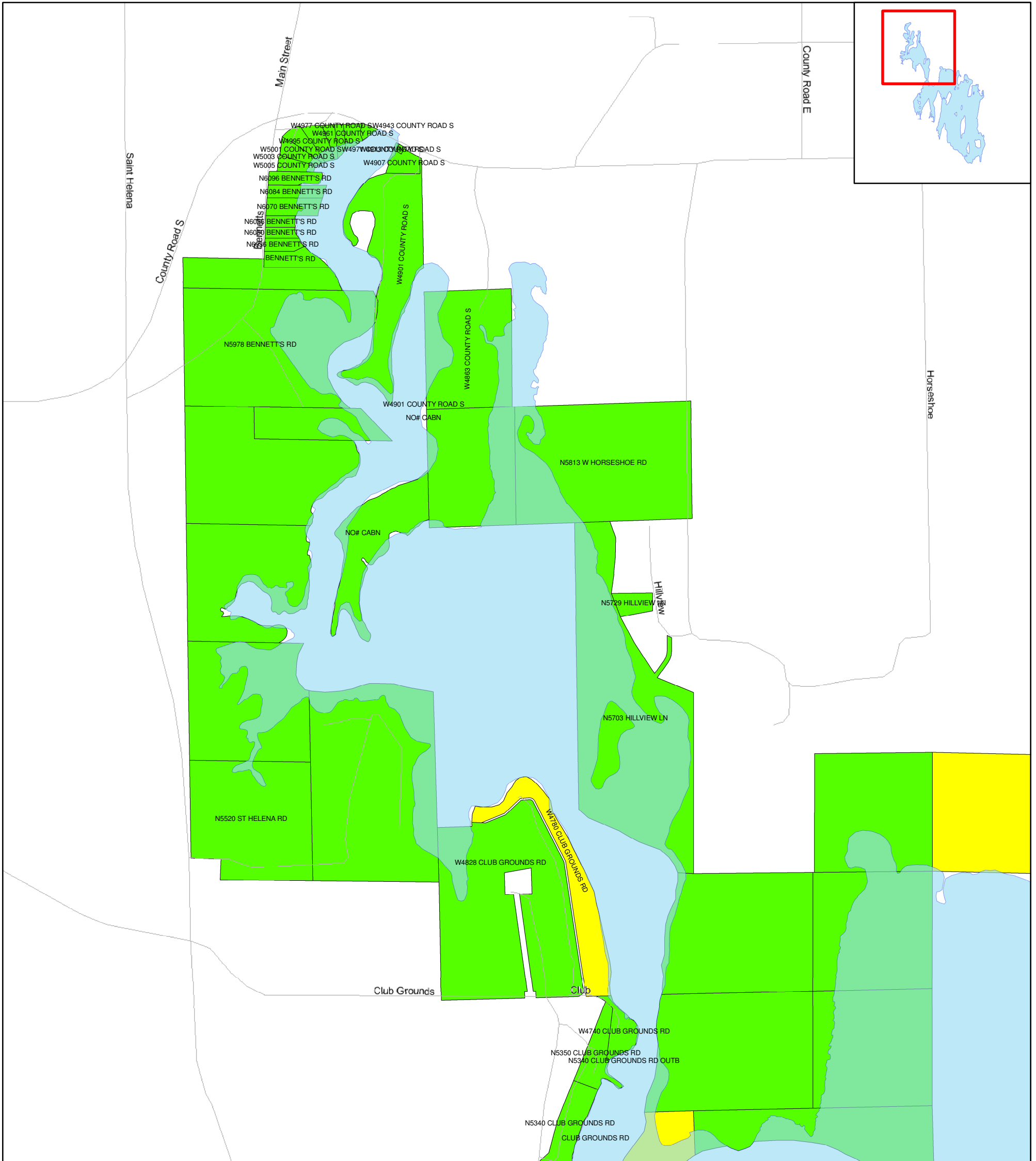


Figure 4. Lake Sinissippi Shoreline EI Energy Categories



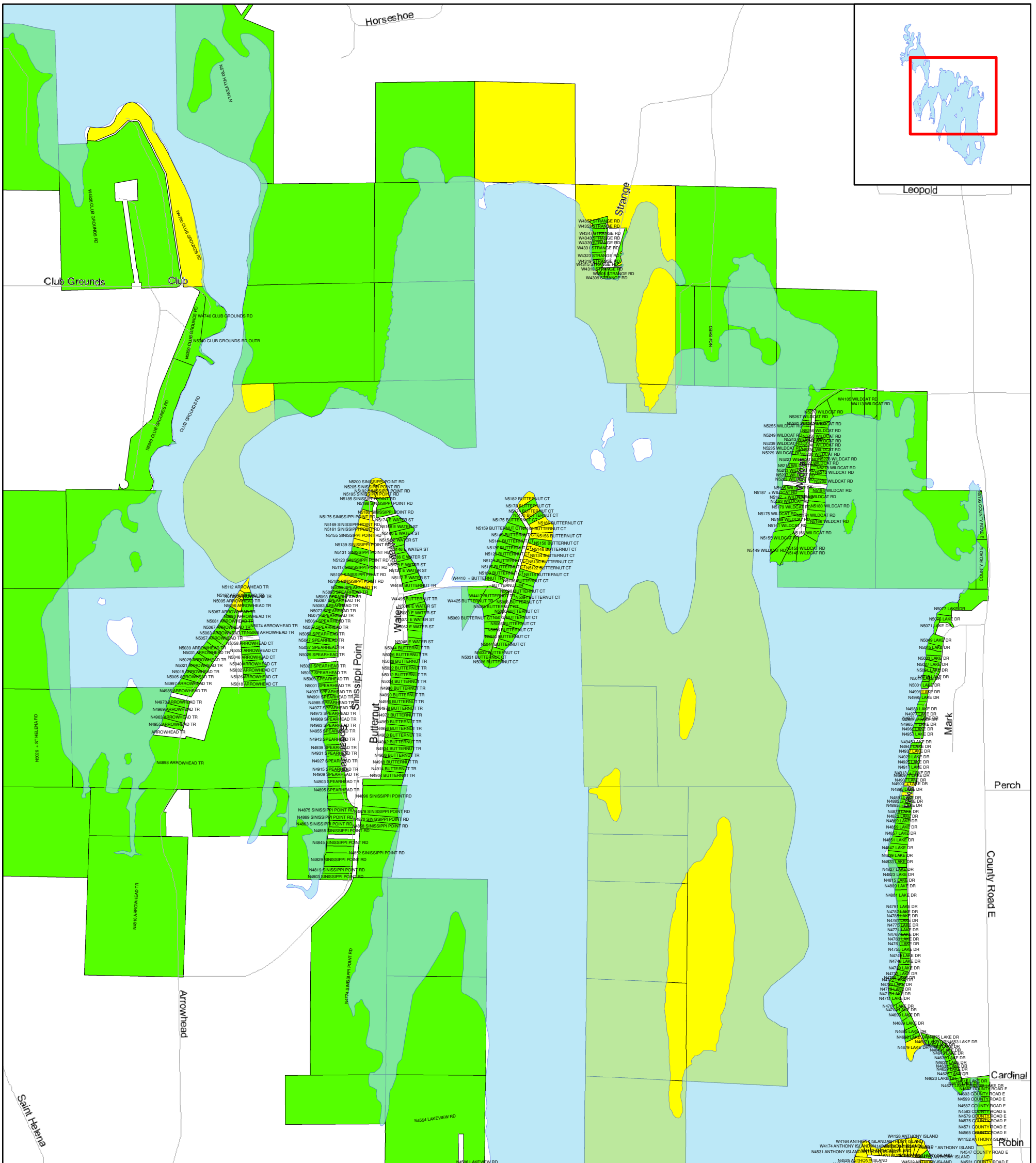
0 0.125 0.25 0.5 Miles

Hey and Associates, Inc.
Water Resources, Wetlands and Ecology

Legend
EI Category
 low
 moderate



Figure 5. Lake Sinissippi Shoreline Erosion Index Categories - North



0 0.15 0.3 0.6 Miles

Hey and Associates, Inc.
Water Resources, Wetlands and Ecology

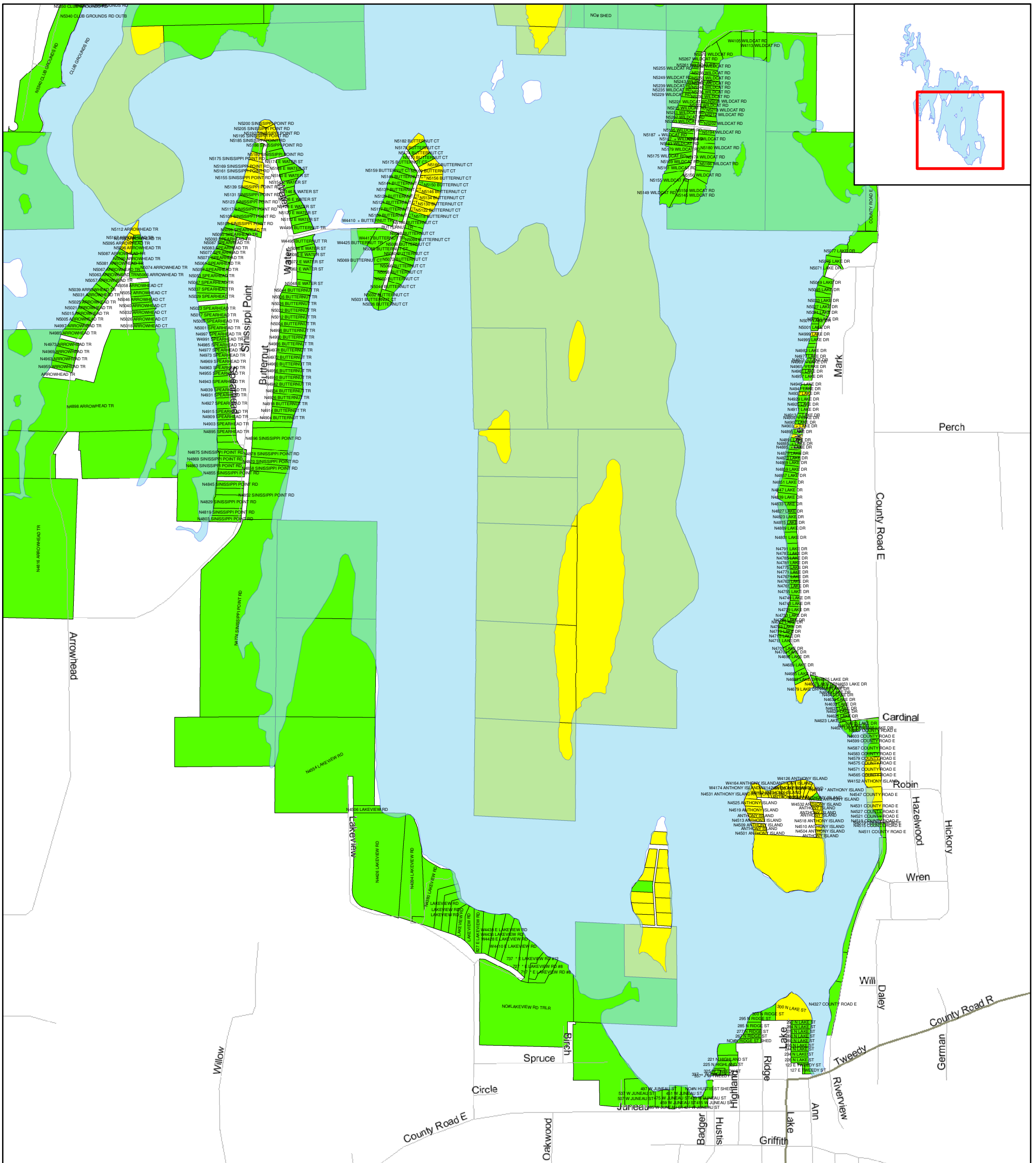
Legend

EI Category

- low
- moderate

N
W — E
S

Figure 6. Lake Sinissippi Shoreline Erosion Index Categories - Central



0 0.15 0.3 0.6 Miles

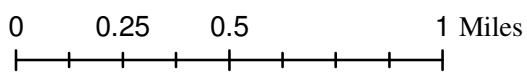
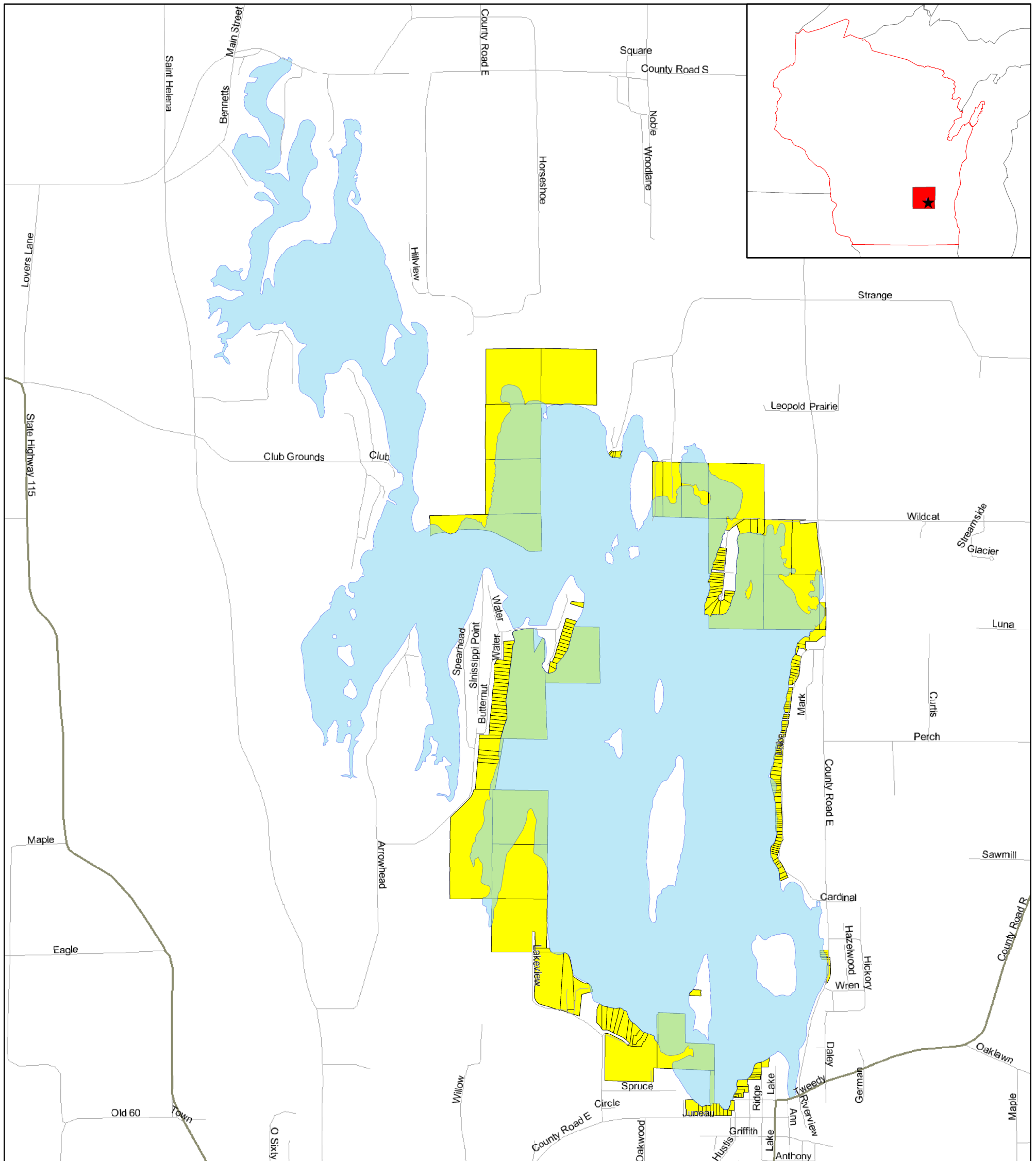
Hey and Associates, Inc.
Water Resources, Wetlands and Ecology

Legend

- EI Category**
- low
 - moderate



Figure 7. Lake Sinissippi Shoreline Erosion Index Categories - South



Hey and Associates, Inc.
Water Resources, Wetlands and Ecology

Legend
SWH Category
moderate



Figure 8. Lake Sinissippi Shoreline EI Energy Categories Overestimated by Storm Wave Height Method

FIGURE 9 - Cross-section for coconut fiber log installation (Source: WDNR)

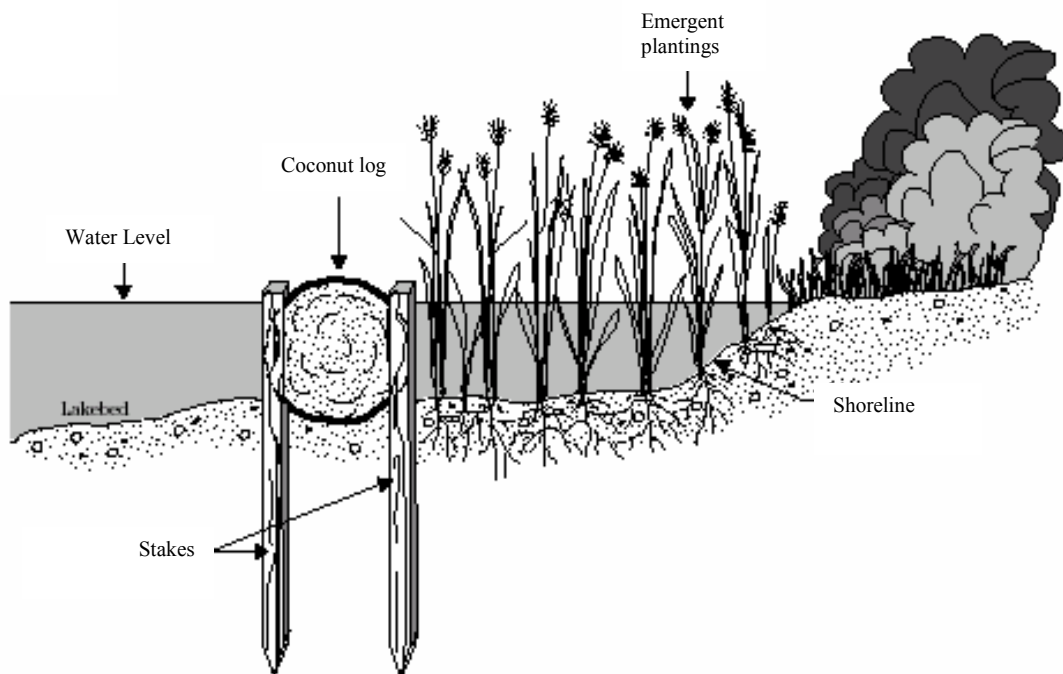


FIGURE 10 - Cross-Section of Brush Mattress Installation (Source: NRCS)

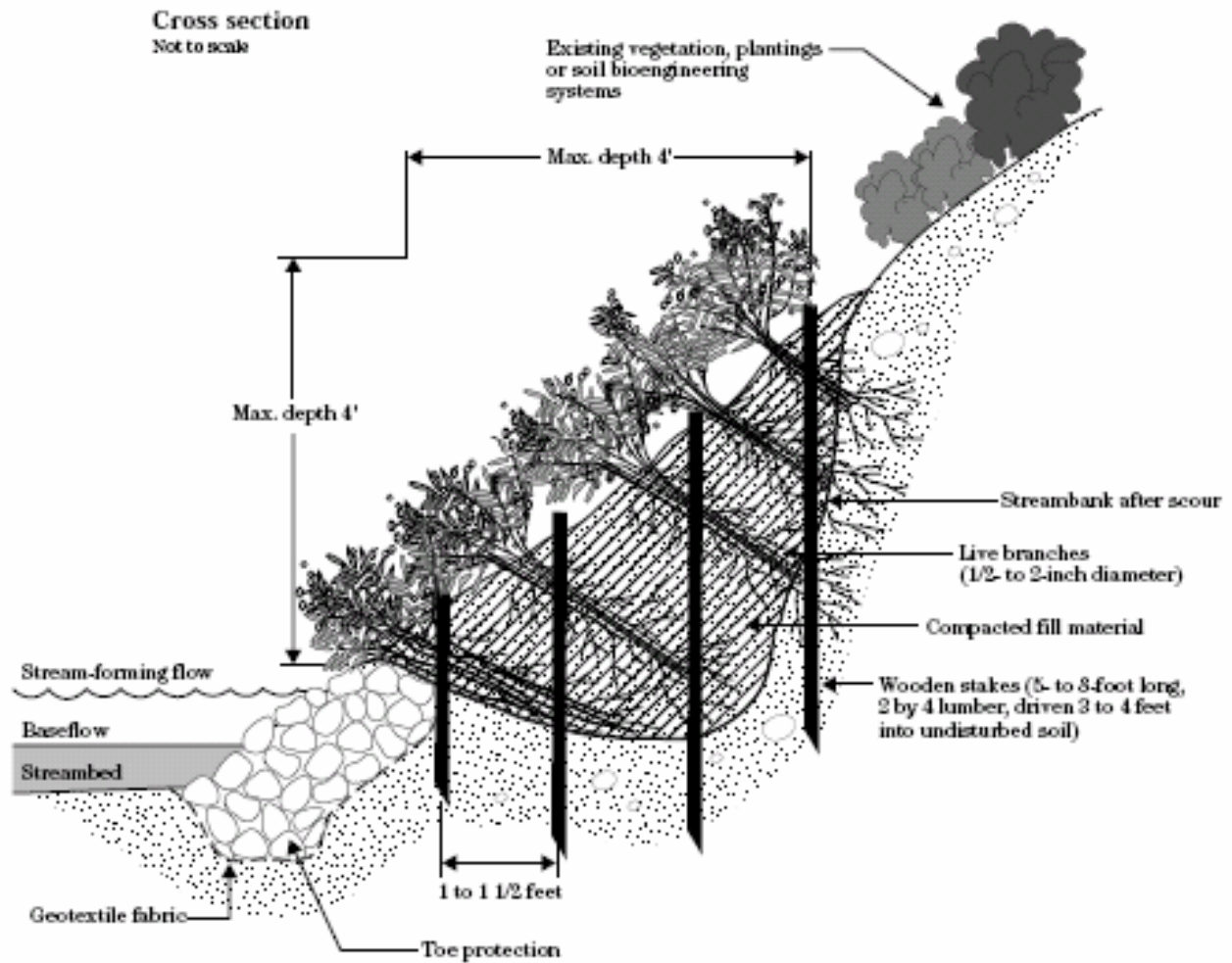


FIGURE 11 - Traditional riprap design cross-section (Source: NRCS)

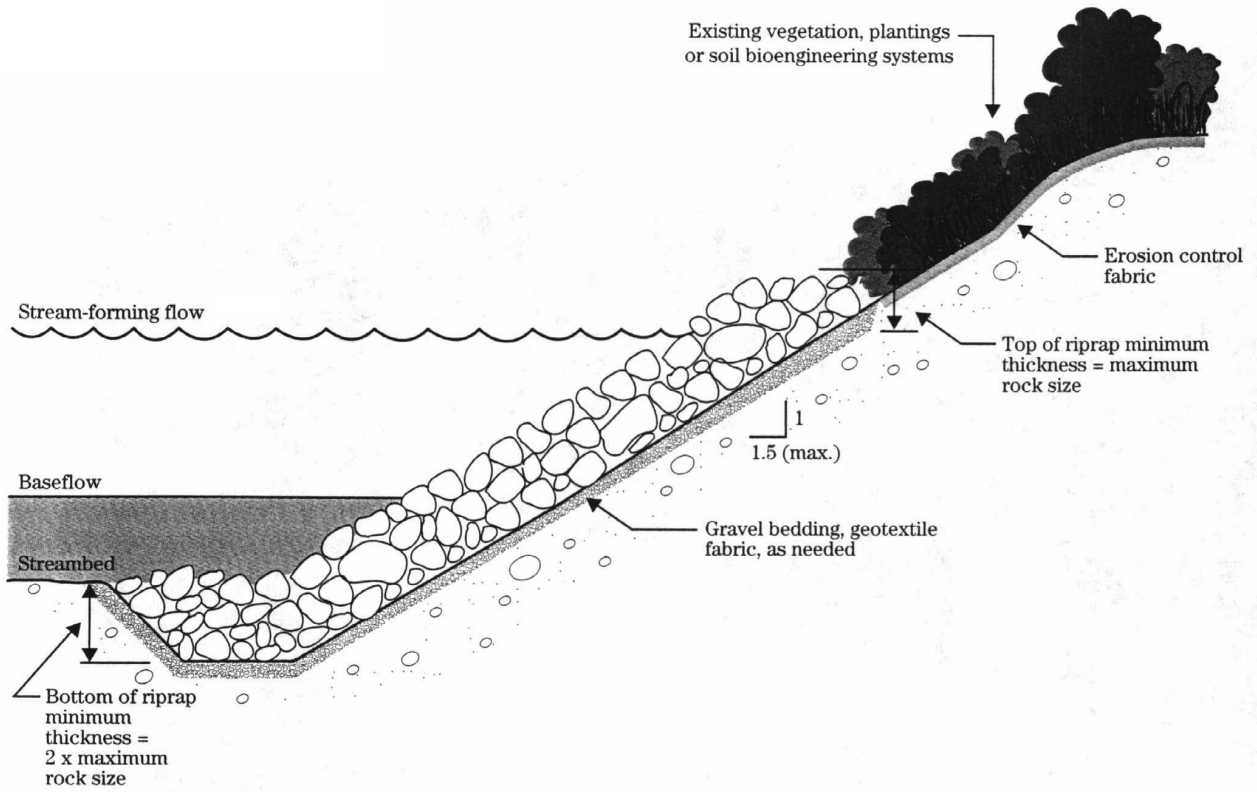
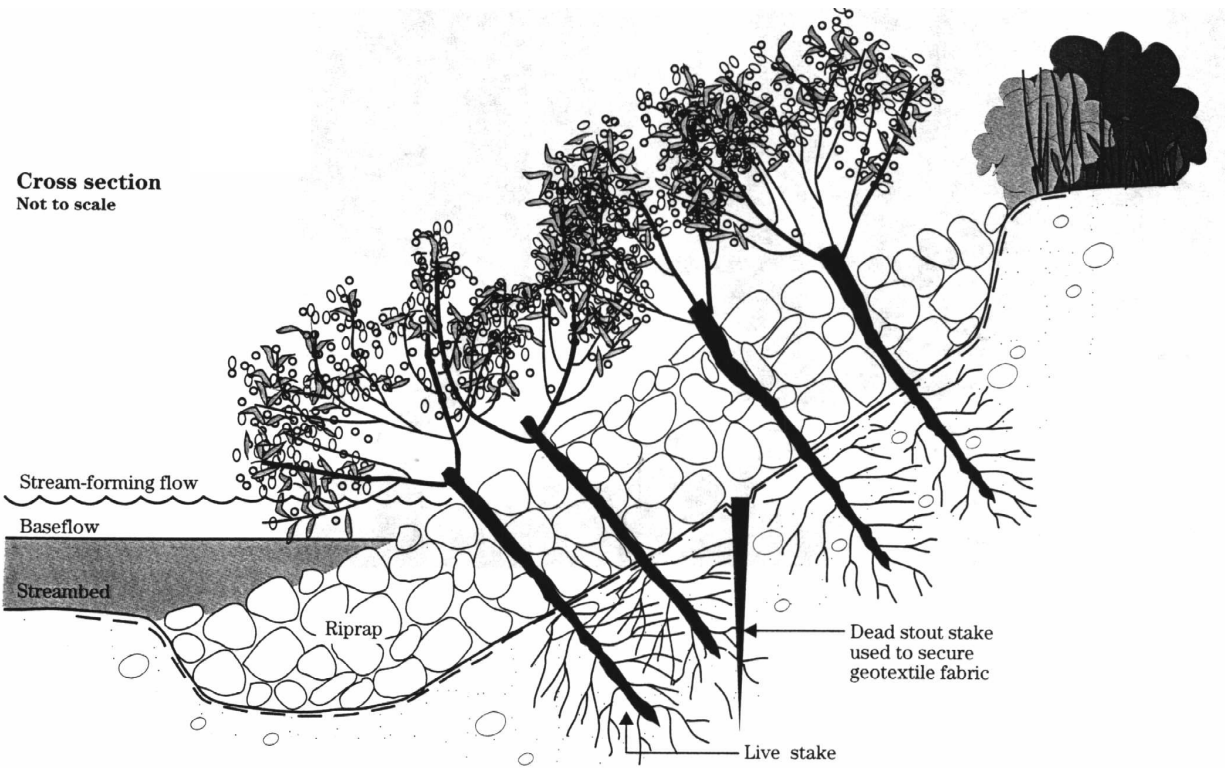


FIGURE 12 - V egetated armor design cross-section (Source: NRCS)



APPENDIX A

Survey Scores Summary

WNER 1	OWNER 2	Property Address	Property City	MFS	D20S	D100S	SGS	SOS	BHS	BCS	BVS	BSS	ASS	AVS	BWS	EIS	EIS_CAT	SWH_CAT
JEROME P CIERNIAK	MARIE E CIERNIAK	295 N RIDGE ST	HUSTISFORD	2	2	3	4	0	2	7	0	0	2	7	1	30	low	low
RUSSELL M COLEY TRUST				2	2	2	1	0	2	0	0	1	2	7	1	20	low	low
ERNIE VONSCHLEDORN	MARGARET VONSCHLEDORN			4	2	2	4	1	2	7	1	4	0	7	1	35	low	low
				4	2	3	4	4	2	7	4	0	0	4	1	35	low	low
NIGEL M CAMERON	SHENACH J CAMERON	N5072 E WATER ST	JUNEAU	4	2	2	1	1	2	7	4	0	2	7	1	33	low	low
CLIVE FRAZIER TRUST		N4815 LAKE DR	HUSTISFORD	4	2	3	4	8	2	0	0	0	2	7	1	33	low	low
CLIVE FRAZIER TRUST		N4809 LAKE DR	HUSTISFORD	4	2	3	4	8	2	0	0	0	2	7	1	33	low	low
				4	2	3	8	4	2	0	0	0	2	7	1	33	low	low
ERNIE VONSCHLEDORN	MARGARET VONSCHLEDORN			4	2	3	4	1	2	7	1	4	0	7	1	36	low	low
BETHANY EV LUTH CONG		260 N LAKE ST	HUSTISFORD	0	2	4	1	0	2	0	0	0	2	7	12	30	low	low
ARDELL KIEFER	GERDA E KIEFER	N4327 COUNTY ROAD E	HUSTISFORD	2	2	4	4	0	2	0	0	0	2	7	12	35	low	low
GARY P TAUBERT	MICHELE M SALAMONE	300 N RIDGE ST	HUSTISFORD	2	2	2	4	0	2	7	4	0	2	4	1	30	low	low
LOUIS R LINSMEYER	CORINNE G LINSMEYER	451 W JUNEAU ST	HUSTISFORD	2	2	2	4	0	2	7	0	0	2	7	1	29	low	low
ERNIE VOPNSCHLEDORN	MARGARET VONSCHLEDORN			4	1	2	1	1	2	7	1	7	0	1	1	28	low	low
T & T MASONRY INC		N5226 WILD CAT RD	IRON RIDGE	2	2	3	1	0	2	7	0	0	2	7	1	27	low	low
MARY DOUGHTY		W4943 COUNTY ROAD S	HORICON	0	2	3	1	0	2	7	0	0	1	4	1	21	low	low
RUSSELL M COLEY TRUST				2	2	2	1	0	2	0	0	1	2	7	1	20	low	low
RUSSELL M COLEY TRUST		N4870 SINISSIPPI POINT RD	JUNEAU	7	2	3	4	1	2	7	1	4	0	1	1	33	low	low
ERNIE VONSCHLEDORN	MARGARET VONSCHLEDORN			2	2	4	1	0	3	7	1	7	0	1	12	40	low	low
CLIFFORD H MAAS	SHERRY L MAAS	N4625 LAKE DR	HUSTISFORD	4	2	3	4	8	2	0	0	0	2	7	12	44	low	low
GREATER MILWAUKEE	PROPERTIES INC	N4945 LAKE DR	HUSTISFORD	4	2	3	4	8	3	7	1	0	2	7	1	42	low	low
ERNIE VONSCHLEDORN	MARGARET VONSCHLEDORN			4	2	2	4	1	2	7	1	4	0	7	1	35	low	low
VIRGINIA ERDMAN	GERDA KIEFER	NO#N RIDGE ST SHED		7	2	2	4	8	2	7	0	0	1	7	1	41	low	low
JEFFREY A HODORSKI	SARA A STRASSBURG	234 N LAKE ST	HUSTISFORD	0	2	3	1	0	2	7	0	0	2	7	12	36	low	low
R THOMAS SAETHER	KATHERINE E SAETHER	N5071 SPEARHEAD TR	JUNEAU	4	2	3	4	8	2	7	0	0	2	7	1	40	low	low
MERLIN H HANDEL	CYNTHIA S KUNZ	277 N RIDGE ST	HUSTISFORD	4	2	3	4	8	2	7	0	0	2	7	1	40	low	low
PATRICK A SADOWSKI		W4323 STRANGE RD	IRON RIDGE	4	2	3	4	4	2	7	1	4	1	7	1	40	low	low
STATE OF WISCONSIN DNR				4	1	2	4	1	2	7	0	0	2	4	12	39	low	low
				4	2	3	8	1	3	7	1	0	2	7	1	39	low	low
VIRGINIA ERDMAN	GERDA KIEFER	267 N RIDGE ST	HUSTISFORD	4	2	3	4	8	2	7	0	0	1	7	1	39	low	low
STRASSBURG TRUST		284 N LAKE ST	HUSTISFORD	0	2	4	1	0	2	7	0	0	2	7	12	37	low	low
J SCOTT TODD		244 N LAKE ST	HUSTISFORD	0	2	3	1	0	2	7	0	0	2	7	12	36	low	low
PETER PARENTE		N4521 COUNTY ROAD E	HUSTISFORD	2	2	3	4	0	2	7	0	0	2	7	12	41	low	low
SINISSIPPI LAKE REALTY		ANTHONY ISLAND	HUSTISFORD	4	2	3	8	8	3	7	4	0	2	7	12	60	moderate	NA

WNER 1	OWNER 2	Property Address	Property City	MFS	D20S	D100S	SGS	SOS	BHS	BCS	BVS	BSS	ASS	AVS	BWS	EIS	EIS_CAT	SWH_CAT
STATE OF WISCONSIN DNR				4	1	3	4	8	2	7	7	0	2	7	12	57	moderate	NA
JAMES D VOGT		ANTHONY ISLAND		4	2	3	8	8	2	7	0	0	2	7	12	55	moderate	NA
JAMES D VOGT		N4513 ANTHONY ISLAND	HUSTISFORD	4	2	3	8	8	2	7	0	0	2	7	12	55	moderate	NA
LILLIAN PIEPER	WALLACE PIEPER	N5160 BUTTERNUT CT	JUNEAU	4	2	3	8	1	2	7	0	0	2	7	12	48	moderate	NA
BERNARD A COHEN		W4863 COUNTY ROAD S	HORICON	0	2	2	4	0	2	7	1	7	0	1	1	27	low	low
NORBERT O HANSON JR	CATHY L HANSON	N5813 W HORSESHOE RD	HORICON	4	2	2	4	0	2	7	1	4	0	1	1	28	low	low
BERNARD A COHEN				0	2	2	8	0	2	7	1	7	0	1	12	42	low	low
BRIAN J HEARLEY	HEATHER M HEARLEY	N5729 HILLVIEW LN	HORICON	4	2	2	4	8	2	7	1	4	0	1	1	36	low	low
STATE OF WISCONSIN DNR				4	1	3	4	8	2	7	7	0	2	7	12	57	moderate	NA
RUDYARD RADLOFF				4	2	3	8	8	3	7	1	7	0	7	1	51	moderate	NA
GARY R WIEMANN	CHRISTINE D WIEMANN	W4357 STRANGE RD	IRON RIDGE	4	2	3	4	4	2	0	0	0	1	7	1	28	low	low
DAVID S CHARTIER		W4353 STRANGE RD	IRON RIDGE	4	2	3	4	4	2	7	4	0	0	4	1	35	low	low
ARTHUR A LUKOWITZ	AUDREY T LUKOWITZ	W4347 STRANGE RD	IRON RIDGE	4	2	3	4	8	2	7	1	0	2	7	1	41	low	low
ROBERT H ALTERGOTT	THERESA A ALTERGOTT	W4343 STRANGE RD	IRON RIDGE	4	2	3	4	8	2	7	0	0	2	7	1	40	low	low
PATRICIA A LAPORTE		W4339 STRANGE RD	IRON RIDGE	4	2	3	4	8	2	7	0	0	1	7	1	39	low	low
WILLIAM A DIONNE	CYNTHIA J DIONNE	W4331 STRANGE RD	IRON RIDGE	4	2	3	4	4	2	7	1	1	1	7	1	37	low	low
PATRICK A SADOWSKI		W4323 STRANGE RD	IRON RIDGE	4	2	3	4	4	2	7	1	4	1	7	1	40	low	low
GLEN C EIFERT	LOUANN EIFERT	W4319 STRANGE RD	IRON RIDGE	4	2	3	4	4	2	0	0	0	2	7	1	29	low	low
MICHAEL R WAMSER		W4315 STRANGE RD	IRON RIDGE	4	2	3	8	4	2	0	0	0	2	7	1	33	low	low
JAMES E ZIMMERMAN	JUDITH G ZIMMERMAN	W4313 STRANGE RD	IRON RIDGE	4	2	3	8	4	2	0	0	0	2	7	1	33	low	low
JAMES E GORTON	KATHERINE A GORTON	W4309 STRANGE RD	IRON RIDGE	4	2	3	8	4	2	0	0	0	2	7	1	33	low	low
MERLIN D PIEPER	RUTH A PIEPER	W4305 STRANGE RD	IRON RIDGE	4	2	3	8	1	2	0	0	0	1	7	1	29	low	low
LUCIA R RADLOFF				2	2	2	4	1	2	7	1	7	0	7	1	36	low	low
RUDYARD RADLOFF				2	2	2	1	1	2	7	1	7	0	1	1	27	low	low
LUCIA R RADLOFF				4	2	2	4	1	2	7	1	4	0	4	1	32	low	low
LUCIA R RADLOFF				4	2	2	4	1	3	7	1	7	0	4	1	36	low	low
EUGENE A SCHLOSSER		NO# SHED		4	2	2	4	1	2	7	1	4	0	4	1	32	low	low
JAY GILLICH				4	1	2	4	1	2	7	1	7	1	7	1	38	low	low
STATE OF WISCONSIN DNR				4	1	2	4	1	2	7	0	0	2	4	12	39	low	low
JAMES A MCCARTNEY	CARLA J MCCARTNEY	N5703 HILLVIEW LN	HORICON	2	2	3	8	1	2	7	1	4	0	1	12	43	low	low
STANLEY TESLER		W4780 CLUB GROUNDS RD	JUNEAU	4	2	3	8	8	2	7	0	0	1	4	12	51	moderate	NA

WNER 1	OWNER 2	Property Address	Property City	MFS	D20S	D100S	SGS	SOS	BHS	BCS	BVS	BSS	ASS	AVS	BWS	EIS	EIS_CAT	SWH_CAT
MAE SCHWENSOW		W4828 CLUB GROUND RD	JUNEAU	4	1	2	4	1	2	7	1	7	0	7	1	37	low	low
MAE SCHWENSOW		N5340 CLUB GROUND RD	JUNEAU	0	2	3	1	0	2	7	1	7	1	4	12	40	low	low
JUNEAU SPORTING CLUB	%STEVE KRANZ	W4740 CLUB GROUND RD	JUNEAU	0	2	3	1	0	2	7	1	7	1	4	12	40	low	low
CHAD C BUELTER	CARLA A BUELTER	N5350 CLUB GROUND RD	JUNEAU	4	2	2	1	1	2	7	1	7	1	4	12	44	low	low
ERNIE VONSCHLEDORN	MARGARET VONSCHLEDORN			4	2	2	4	1	2	7	1	4	0	7	1	35	low	low
ERNIE VONSCHLEDORN	MARGARET VONSCHLEDORN			2	2	4	1	0	3	7	1	7	0	1	12	40	low	low
ERNIE VOPNSCHLEDORN	MARGARET VONSCHLEDORN			4	1	2	1	1	2	7	1	7	0	1	1	28	low	low
ERNIE VONSCHLEDORN	MARGARET VONSCHLEDORN			4	2	2	4	1	2	7	1	4	0	7	1	35	low	low
ERNIE VONSCHLEDORN	MARGARET VONSCHLEDORN			4	2	3	4	1	2	7	1	4	0	7	1	36	low	low
HELEN HERBER TRUST	%WILLIAM & HELEN HERBER	N5200 SINISSIPPI POINT RD	JUNEAU	4	2	3	8	1	2	7	0	0	2	7	12	48	moderate	NA
WERNER MUELLER	ROSINA MUELLER	N5205 SINISSIPPI POINT RD	JUNEAU	4	2	3	8	8	3	7	1	1	2	7	12	58	moderate	NA
DENNIS J ANDREW	DENISE M ANDREW	N5195 SINISSIPPI POINT RD	JUNEAU	4	2	3	8	8	3	7	1	7	2	7	12	64	moderate	NA
BRUCE A WALTERS	VIRGINIA F WALTERS	N5169 SINISSIPPI POINT RD	JUNEAU	4	2	3	4	8	2	7	0	0	2	7	1	40	low	low
LARRY H KASSENS	BIBIANA KASSENS	N5161 SINISSIPPI POINT RD	JUNEAU	4	2	3	4	8	2	7	1	7	1	1	1	41	low	low
P HENDRICKSON (VANDEHEI)		N5155 SINISSIPPI POINT RD	JUNEAU	4	2	3	4	8	2	7	1	7	1	1	1	41	low	low
GEORGE FEIST JR	MARY A FEIST	N5139 SINISSIPPI POINT RD	JUNEAU	4	2	3	4	8	3	7	4	1	1	7	1	45	low	low
LEE J & KAREN L	HARTENSTEIN TRUST	N5131 SINISSIPPI POINT RD	JUNEAU	4	2	3	4	8	2	0	0	0	2	7	1	33	low	low
BERNICE MITKEY TRUST		N5123 SINISSIPPI POINT RD	JUNEAU	4	2	3	4	8	2	0	0	0	0	7	1	31	low	low
JAMES E PIKE	DIANE B PIKE	N5117 SINISSIPPI POINT RD	JUNEAU	4	2	2	4	8	2	0	0	0	1	7	1	31	low	low
FREDERIC R WEEG TRUST	ANNA WEEG TRUST	N5109 SINISSIPPI POINT RD	JUNEAU	4	2	3	4	8	2	7	1	0	1	1	1	34	low	low
WILLIAM G KAZLAUSKAS	MARYANN L KAZLAUSKAS	N5105 SINISSIPPI POINT RD	JUNEAU	4	2	3	4	8	2	7	0	0	1	7	1	39	low	low
TRENT E THOM		N5192 SINISSIPPI POINT RD	JUNEAU	4	2	3	8	1	2	7	1	0	2	7	12	49	moderate	NA
JOHN K FLASZA	CHRISTINE A FLASZA	N5186 SINISSIPPI POINT RD	JUNEAU	4	2	2	8	1	2	7	0	0	1	7	6	40	low	low
RICKY A ROGOWSKI		N5180 SINISSIPPI POINT RD	JUNEAU	4	2	2	4	1	2	7	4	0	0	4	1	31	low	low
JERRY J PEARCE		N5174 E WATER ST	JUNEAU	4	2	2	4	1	2	7	1	1	2	7	1	34	low	low
DENNIS UECKER	CAROL A LAPORTE	N5168 E WATER ST	JUNEAU	4	2	2	4	1	2	7	4	0	2	7	1	36	low	low
EDITH ARBITURE TRUST	GERALD ARBITURE TRUST	N5160 E WATER ST	JUNEAU	4	2	2	1	1	2	7	4	0	2	7	1	33	low	low

WNER 1	OWNER 2	Property Address	Property City	MFS	D20S	D100S	SGS	SOS	BHS	BCS	BVS	BSS	ASS	AVS	BWS	EIS	EIS_CAT	SWH_CAT
MARK S WEIDNER		N5154 E WATER ST	JUNEAU	4	2	2	1	1	2	7	4	0	2	7	1	33	low	low
CARY E LICHTFELDT		N5146 E WATER ST	JUNEAU	4	2	2	1	1	2	7	0	0	2	7	1	29	low	low
HERBERT B SCHUBERT		N5136 E WATER ST	JUNEAU	4	2	2	1	1	2	0	0	0	2	7	1	22	low	low
ROSEMARIE WILKINSON M	ROBERT WILKINSON JR	N5128 E WATER ST	JUNEAU	4	2	2	1	1	2	7	0	0	2	1	1	23	low	low
STEPHEN M SHIMON	LINDA A SHIMON	N5120 E WATER ST	JUNEAU	4	2	2	1	1	2	7	0	0	2	7	1	29	low	low
NANCY F EICHENAUER		N5112 E WATER ST	JUNEAU	4	2	2	1	1	2	7	4	0	1	4	1	29	low	low
TERRY J SORENSEN	SHARDELL M SORENSEN	N5185 SINISSIPPI POINT RD	JUNEAU	4	2	3	4	8	2	0	0	1	2	7	12	45	low	low
CHRISTIAN WASCHULL W	EDELTRAUD WASCHULL	N5175 SINISSIPPI POINT RD	JUNEAU	4	2	3	4	8	2	7	0	0	2	7	1	40	low	low
THIEME FARM INC				2	2	2	4	1	2	7	1	7	0	1	1	30	low	low
MAE SCHWENSOW				4	2	3	8	4	2	7	1	7	0	4	12	54	moderate	NA
GLORIA H STAUM		N5107 ARROWHEAD TR	JUNEAU	4	2	3	8	8	2	7	0	0	1	7	12	54	moderate	NA
ROBERT R PERRON TRUST	VALERIE L PERRON TRUST	N5108 ARROWHEAD TR	JUNEAU	4	2	3	8	1	2	7	0	0	2	7	1	37	low	low
PHILIP L ALLEN TRUST	BARBARA J ALLEN TRUST	N5112 ARROWHEAD TR	JUNEAU	4	2	3	8	1	2	7	0	0	2	7	12	48	moderate	NA
FRANKLIN H GIEBEL	SUSAN J GIEBEL	N4997 ARROWHEAD TR	JUNEAU	2	2	3	1	0	2	7	1	0	1	7	1	27	low	low
DENNIS M CHESNEY	GARY J CHESNEY	N5005 ARROWHEAD TR	JUNEAU	2	2	3	1	0	2	7	0	0	1	7	1	26	low	low
KENNETH P LAWLOR	PATRICIA A LAWLOR	N5015 ARROWHEAD TR	JUNEAU	2	2	3	4	0	2	7	1	0	2	7	1	31	low	low
GLENN F LINDE SR	AUDREY D LINDE	N5021 ARROWHEAD TR	JUNEAU	2	2	3	4	0	2	7	0	0	2	7	1	30	low	low
KENNETH KINCZFOGEL J		N5025 ARROWHEAD TR	JUNEAU	2	2	3	4	0	2	7	0	0	2	7	1	30	low	low
MARIE R LOSCH		N5031 ARROWHEAD TR	JUNEAU	2	2	3	4	0	2	7	0	0	2	7	1	30	low	low
JEANNE A WEBER		N5039 ARROWHEAD TR	JUNEAU	2	2	3	4	0	2	7	0	0	2	7	1	30	low	low
JOHN P NOONAN	BARBARA NOONAN			4	2	3	4	8	2	7	0	0	0	4	1	35	low	low
JOHN P NOONAN	BARBARA NOONAN	N5057 ARROWHEAD TR	JUNEAU	4	2	3	4	8	2	7	0	0	2	4	1	37	low	low
BETTY A POELLIEN		N5063 ARROWHEAD TR	JUNEAU	4	2	3	4	8	2	0	0	0	2	7	1	33	low	low

WNER 1	OWNER 2	Property Address	Property City	MFS	D20S	D100S	SGS	SOS	BHS	BCS	BVS	BSS	ASS	AVS	BWS	EIS	EIS_CAT	SWH_CAT
RICHARD F HARKINS	JUNE L HARKINS	N5067 ARROWHEAD TR	JUNEAU	4	2	3	4	8	2	7	0	0	2	7	1	40	low	low
RALPH MALZEWSKI	VIRGINIA MALZEWSKI	N5081 ARROWHEAD TR	JUNEAU	4	2	3	4	8	2	0	0	0	2	7	12	44	low	low
F C BUSCHER JR TRUST	MARNA E BUSCHER TRUST	N5087 ARROWHEAD TR	JUNEAU	4	2	3	4	8	2	0	0	1	2	7	12	45	low	low
MARJORIE K SELL		N5095 ARROWHEAD TR	JUNEAU	4	2	3	8	8	2	7	4	0	2	7	12	59	moderate	NA
MARK SOWA	RAECHEL D SOWA	N5096 ARROWHEAD TR	JUNEAU	2	2	3	8	0	2	7	0	0	2	7	1	34	low	low
BERNADETTE A LASSEN		N5090 ARROWHEAD TR	JUNEAU	2	2	2	4	0	2	7	4	0	2	7	1	33	low	low
WALTER M LEPLEY	JILL T LEPLEY	N5074 ARROWHEAD TR	JUNEAU	2	2	3	4	0	2	7	0	0	2	7	1	30	low	low
FELIX G PANAHO	BITUIN R PANAHO	N5066 ARROWHEAD TR	JUNEAU	2	2	3	4	0	2	7	0	0	2	7	1	30	low	low
DENNIS L POLZIN	GLORIA L POLZIN	N5058 ARROWHEAD CT	JUNEAU	2	2	3	4	0	2	0	0	1	2	7	1	24	low	low
ARTHUR J HAJEK	DOROTHY HAJEK	N5052 ARROWHEAD CT	JUNEAU	2	2	3	4	0	2	7	0	0	2	7	1	30	low	low
RICHARD W SPEAR TRUST		N5046 ARROWHEAD CT	JUNEAU	2	2	2	1	0	2	7	0	0	2	7	1	26	low	low
DARYL J FRENCH		N5040 ARROWHEAD CT	JUNEAU	2	2	2	1	0	2	0	0	0	1	7	1	18	low	low
PATRICK J BYLE		N5032 ARROWHEAD CT	JUNEAU	2	2	2	1	0	2	7	1	4	2	7	1	31	low	low
LONNIE SCHUETT	LINDA SCHUETT	N5026 ARROWHEAD CT	JUNEAU	2	2	3	1	0	2	0	0	0	1	7	1	19	low	low
DIANNA CARTLEDGE (STEPHE		N5018 ARROWHEAD CT	JUNEAU	2	2	3	1	0	2	7	0	0	1	7	1	26	low	low
DANNY CARTLEDGE	CARRIE CARTLEDGE	N4985 ARROWHEAD TR	JUNEAU	2	2	3	1	0	2	7	0	0	1	7	1	26	low	low
GARY J BECKER	ROXANE M BECKER	N4973 ARROWHEAD TR	JUNEAU	2	2	2	1	0	2	7	4	0	0	4	1	25	low	low
STEVEN J DANKMEYER	AIMEE L DANKMEYER	N4969 ARROWHEAD TR	JUNEAU	2	2	2	1	0	2	7	1	4	0	1	1	23	low	low
JONATHAN G RICKER	ROBIN J RICKER	N4963 ARROWHEAD TR	JUNEAU	2	2	2	1	0	2	7	1	4	0	1	1	23	low	low

WNER 1	OWNER 2	Property Address	Property City	MFS	D20S	D100S	SGS	SOS	BHS	BCS	BVS	BSS	ASS	AVS	BWS	EIS	EIS_CAT	SWH_CAT
GORDON WOOLEVER	DARBY K O'CONNELL	N4955 ARROWHEAD TR	JUNEAU	2	2	2	1	0	2	7	1	4	0	1	1	23	low	low
LAWRENCE P SULLIVAN		N4898 ARROWHEAD TR	JUNEAU	2	2	2	1	0	2	7	1	7	0	1	1	26	low	low
NANCY F EICHENAUER		W4498 BUTTERNUT TR	JUNEAU	4	2	2	1	1	2	7	1	0	0	1	1	22	low	low
DONALD G CARTLEDGE	LUELLA M CARTLEDGE	W4495 BUTTERNUT TR	JUNEAU	2	2	2	1	0	2	7	1	1	0	1	1	20	low	low
MICHAEL V BAXTER	ANN BAXTER	N5086 E WATER ST	JUNEAU	2	2	2	1	0	2	7	1	1	0	1	1	20	low	low
PHYLLIS SENASE		N5080 E WATER ST	JUNEAU	4	2	2	1	1	2	7	1	0	1	1	1	23	low	moderate
NIGEL M CAMERON	SHENACH J CAMERON	N5072 E WATER ST	JUNEAU	4	2	2	1	1	2	7	4	0	2	7	1	33	low	moderate
WILLIAM R BEHLING		N5062 E WATER ST	JUNEAU	4	2	3	1	1	2	0	0	0	2	7	1	23	low	moderate
RICHARD L FOX	LISA K FOX			4	2	3	1	1	2	7	0	0	2	4	1	27	low	moderate
ROBERT I LUNDE	MARLYS H LUNDE	N5048 E WATER ST	JUNEAU	4	2	3	1	1	2	7	4	0	2	4	1	31	low	moderate
STEVEN E BARLEBEN		N5044 BUTTERNUT TR	JUNEAU	4	2	2	1	1	2	7	1	1	2	1	1	25	low	moderate
DONALD V MCMULLEN	KATHRYN M MCMULLEN	N5036 BUTTERNUT TR	JUNEAU	4	2	2	4	1	2	7	1	0	1	7	1	32	low	moderate
JOSEPH P BAHR		N5026 BUTTERNUT TR	JUNEAU	4	2	2	4	1	2	0	0	0	0	7	1	23	low	moderate
EDGARDO G SANDOVAL	JAZMIN D SANDOVAL	N5022 BUTTERNUT TR	JUNEAU	4	2	3	4	1	2	7	1	0	2	4	1	31	low	moderate
LINDA J BLASER	GERALD J MITZENHEIM	N5012 BUTTERNUT TR	JUNEAU	4	2	3	4	1	3	7	0	0	1	7	1	33	low	moderate
DON J JENSEN	PAULARENE JENSEN	N5004 BUTTERNUT TR	JUNEAU	4	2	3	4	1	3	7	4	0	2	7	1	38	low	moderate
KENNETH J ANTON	KENNETH O ANTON	W4425 BUTTERNUT TR	JUNEAU	2	2	2	1	0	2	7	0	0	0	0	1	17	low	low
KURT C SMITH	%DON L SMITH	N5099 SPEARHEAD TR	JUNEAU	4	2	3	4	8	2	0	0	0	2	7	1	33	low	low
ROBERT PROKOPOWICZ	LINDA PROKOPOWICZ	N5095 SPEARHEAD TR	JUNEAU	4	2	3	4	8	2	0	0	0	2	7	1	33	low	low
MICHAEL J MAHOOD	BARBARA A MAHOOD	N5093 SPEARHEAD TR	JUNEAU	4	2	3	4	8	2	7	4	0	2	7	1	44	low	low
TROYE C FOX	AMY FORMILLER	N5087 SPEARHEAD TR	JUNEAU	4	2	3	4	8	2	7	0	0	2	7	1	40	low	low
DANA C FLOOR	BONNIE C FLOOR	N5083 SPEARHEAD TR	JUNEAU	4	2	3	4	8	2	0	0	0	2	7	1	33	low	low
JAMES L MAXWELL	MARYKAY MAXWELL	N5077 SPEARHEAD TR	JUNEAU	4	2	3	4	8	2	0	0	0	2	7	1	33	low	low
R THOMAS SAETHER	KATHERINE E SAETHER	N5071 SPEARHEAD TR	JUNEAU	4	2	3	4	8	2	7	0	0	2	7	1	40	low	low

WNER 1	OWNER 2	Property Address	Property City	MFS	D20S	D100S	SGS	SOS	BHS	BCS	BVS	BSS	ASS	AVS	BWS	EIS	EIS_CAT	SWH_CAT
TERRENCE R PLOEGER		N5061 SPEARHEAD TR	JUNEAU	4	2	3	4	8	2	0	7	0	2	7	1	40	low	low
ROSEMARY LANDWEHR	A ARLEN J MONFILS	N5057 SPEARHEAD TR	JUNEAU	4	2	3	4	8	2	7	0	0	2	7	1	40	low	low
JON DEBELAK		N5053 SPEARHEAD TR	JUNEAU	4	2	2	4	8	2	7	0	0	2	7	1	39	low	low
HUGO V IACCINO	LUIGINA IACCINO	N5047 SPEARHEAD TR	JUNEAU	4	2	3	4	8	2	7	0	0	2	7	1	40	low	low
WILLIAM E FOHEY		N5037 SPEARHEAD TR	JUNEAU	2	2	2	4	0	2	7	0	0	2	7	1	29	low	low
JAMES P HAUSCH II	JENNIFER L MCCLEARN	N5029 SPEARHEAD TR	JUNEAU	2	2	2	1	0	2	7	0	0	1	7	1	25	low	low
SALLY A REIGER (STEELE)		N5023 SPEARHEAD TR	JUNEAU	2	2	2	1	0	2	7	0	0	1	4	1	22	low	low
BRIAN J BOECK	KATHY L HOEFS	N5017 SPEARHEAD TR	JUNEAU	2	2	3	1	0	2	7	4	0	0	4	1	26	low	low
JOHN R DREYER	ANN L DREYER	N5009 SPEARHEAD TR	JUNEAU	2	2	2	1	0	2	0	4	0	2	7	1	23	low	low
GLENN SCHMIDT		N5001 SPEARHEAD TR	JUNEAU	2	2	2	1	0	2	7	4	1	2	7	1	31	low	low
STEPHEN E CURBY	CATHY E CURBY	N4997 SPEARHEAD TR	JUNEAU	2	2	3	1	0	2	0	4	0	2	7	1	24	low	low
DONALD J KAZLAUSKAS	JUDITH L KAZLAUSKAS	W4991 SPEARHEAD TR	JUNEAU	2	2	3	1	0	3	0	0	0	2	7	1	21	low	low
WILLIAM P RADES	SANDRA J RADES	N4985 SPEARHEAD TR	JUNEAU	2	2	3	1	0	2	0	0	0	2	7	1	20	low	low
MARK VALERUGO	DON VALERUGO	N4977 SPEARHEAD TR	JUNEAU	2	2	3	1	0	2	7	0	0	2	7	1	27	low	low
CARROL W MESNER	DONALYN L MESNER	N4973 SPEARHEAD TR	JUNEAU	2	2	3	1	0	2	7	4	0	2	7	1	31	low	low
RICHARD J MEYERS	BARBARA A MEYERS	N4969 SPEARHEAD TR	JUNEAU	2	2	3	1	0	2	0	0	0	2	7	1	20	low	low
GEORGE V KAEMMERER	LINDA A KAEMMERER	N4963 SPEARHEAD TR	JUNEAU	2	2	2	1	0	2	7	4	0	2	7	1	30	low	low
NORMAN P RAND	SHIRLEY C RAND	N4955 SPEARHEAD TR	JUNEAU	2	2	2	1	0	2	7	4	0	2	7	1	30	low	low
ALFRED M SCHULTZ SR	ALICE M SCHULTZ	N4943 SPEARHEAD TR	JUNEAU	2	2	2	1	0	2	0	0	0	2	7	1	19	low	low
WILBUR H MOSS	CAROLYN B MOSS	N4939 SPEARHEAD TR	JUNEAU	2	2	2	1	0	2	7	0	0	2	7	1	26	low	low
PAUL G WOLFRAM	JULIE A WOLFRAM	N4931 SPEARHEAD TR	JUNEAU	2	2	2	1	0	2	7	4	0	2	7	1	30	low	low
RICHARD P GOLUBSKI	DIANE J GOLUBSKI	N4927 SPEARHEAD TR	JUNEAU	2	2	2	1	0	2	7	0	0	1	7	1	25	low	low
DEUTSCHE BANK TRUST	%HOMECOMINGS FINANCIAL	N4915 SPEARHEAD TR	JUNEAU	2	2	2	1	0	2	7	1	4	2	4	1	28	low	low

WNER 1	OWNER 2	Property Address	Property City	MFS	D20S	D100S	SGS	SOS	BHS	BCS	BVS	BSS	ASS	AVS	BWS	EIS	EIS_CAT	SWH_CAT
KAREN P O'GORMAN		N4909 SPEARHEAD TR	JUNEAU	2	2	2	1	0	2	7	0	0	1	7	1	25	low	low
JOYCE A MARTIN		N4903 SPEARHEAD TR	JUNEAU	2	2	2	1	0	2	7	0	0	1	7	1	25	low	low
RONALD L KRUPA	MARYANN KRUPA			7	2	3	4	1	2	7	4	4	2	7	1	44	low	moderate
ROBERT M VINZ		N4904 BUTTERNUT TR	JUNEAU	7	2	3	4	1	2	7	0	0	2	7	1	36	low	moderate
FRED M GARCIA	LOURDES M GARCIA	N4996 BUTTERNUT TR	JUNEAU	4	2	3	4	1	3	7	0	0	2	7	1	34	low	moderate
JEAN A MUELLER	JESSIE L MUELLER	N4990 BUTTERNUT TR	JUNEAU	4	2	2	4	1	2	7	0	0	2	7	1	32	low	moderate
MARY MUELLER	STANLEY WRECZYCKI	N4986 BUTTERNUT TR	JUNEAU	4	2	3	4	1	3	7	0	0	2	7	1	34	low	moderate
ROBERT A STUMPNER	SUSAN A STUMPNER	N4978 BUTTERNUT TR	JUNEAU	4	2	3	4	1	3	7	4	0	2	4	1	35	low	moderate
JAMES S CZUPRYNSKI	RUTH A CZUPRYNSKI	N4972 BUTTERNUT TR	JUNEAU	7	2	3	4	1	2	7	0	0	2	7	1	36	low	moderate
LESLEY A MOSHER	LILLIAN P GOLLNICK	N4960 BUTTERNUT TR	JUNEAU	7	2	3	4	1	2	7	1	0	2	4	1	34	low	moderate
CHARLOTTE S SZMANDA		N4956 BUTTERNUT TR	JUNEAU	7	2	3	4	1	2	7	0	0	2	7	1	36	low	moderate
ALBERT C KNAAK	CAROL A KNAAK	N4950 BUTTERNUT TR	JUNEAU	7	2	3	4	1	2	0	0	0	2	7	1	29	low	moderate
ARNOLD G HOEFT	NANCY L HOEFT	N4942 BUTTERNUT TR	JUNEAU	7	2	3	4	1	2	7	0	0	2	7	1	36	low	moderate
RICK JACKSON	DIANNE SUKOVICH	N4934 BUTTERNUT TR	JUNEAU	7	2	3	4	1	2	7	0	0	2	7	1	36	low	moderate
DEBORA A WALLACE		N4926 BUTTERNUT TR	JUNEAU	7	2	3	4	1	2	7	0	0	2	7	1	36	low	moderate
BENEDICT J MRUGALA		N4918 BUTTERNUT TR	JUNEAU	7	2	3	4	1	2	7	0	0	2	7	1	36	low	moderate
NANCY M RUDE		N4914 BUTTERNUT TR	JUNEAU	7	2	3	4	1	2	7	4	0	2	7	1	40	low	moderate
JAY GILLICH				2	2	2	1	0	2	7	4	0	0	4	1	25	low	moderate
KEVIN P MCDONALD	MARYANN A MCDONALD	W4113 WILDCAT RD	IRON RIDGE	2	2	2	1	0	2	7	1	4	0	4	1	26	low	moderate
JAY GILLICH		W4105 WILDCAT RD	IRON RIDGE	2	2	2	1	0	2	7	4	0	0	4	1	25	low	moderate
JAY GILLICH				2	2	2	8	0	2	7	4	0	0	4	1	32	low	moderate
PHYLLIS A RUTZ	PATRICIA A HILL	N5267 WILDCAT RD	IRON RIDGE	4	2	2	4	8	2	0	0	0	1	7	1	31	low	low
LARRY C PAGEL	CAROLYN M PAGEL	N5261 WILDCAT RD	IRON RIDGE	4	2	3	4	8	2	0	0	0	2	7	1	33	low	low
ROBERT E KERSTEN	LINDA R KERSTEN	N5255 WILDCAT RD	IRON RIDGE	4	2	3	4	8	2	7	4	0	2	7	1	44	low	low
STEVE ROSENBLUM	%FIRST BANK MORTGAGE	N5249 WILDCAT RD	IRON RIDGE	4	2	3	4	8	2	7	0	0	2	7	1	40	low	low
TIMOTHY P WAGNER		N5243 WILDCAT RD	IRON RIDGE	4	2	3	4	8	2	7	4	0	2	7	1	44	low	low

WNER 1	OWNER 2	Property Address	Property City	MFS	D20S	D100S	SGS	SOS	BHS	BCS	BVS	BSS	ASS	AVS	BWS	EIS	EIS_CAT	SWH_CAT
MICHAEL J MERTZ		N5239 WILDCAT RD	IRON RIDGE	4	2	3	4	8	2	7	0	0	2	7	1	40	low	moderate
ALVARO ALEMAN	MAYRA ALEMAN	N5235 WILDCAT RD	IRON RIDGE	4	2	3	4	8	2	7	0	0	2	7	1	40	low	moderate
TERRANCE J SWAN	SUSAN M SWAN	N5229 WILDCAT RD	IRON RIDGE	4	2	3	4	8	2	7	0	0	2	7	1	40	low	moderate
DARRYL B CREMER	JANE E CREMER	N5221 WILDCAT RD	IRON RIDGE	4	2	3	4	8	2	7	0	0	2	7	1	40	low	moderate
RICHARD J KREUL	MARYANN KREUL	N5215 WILDCAT RD	IRON RIDGE	4	2	3	4	8	2	7	0	0	2	7	1	40	low	moderate
JOSEPH J WAGNER SR	GERTRUDE WAGNER	N5211 WILDCAT RD	IRON RIDGE	4	2	3	4	8	2	7	0	0	2	7	1	40	low	moderate
SUSAN J BRAEMER		N5207 WILDCAT RD	IRON RIDGE	4	2	3	4	8	2	7	0	0	2	7	1	40	low	moderate
GORDON TRAPP		N5203 WILDCAT RD	IRON RIDGE	4	2	3	4	8	2	7	4	0	2	7	1	44	low	moderate
RICHARD W GRADY	DONNALEE GRADY	N5202 WILDCAT RD	IRON RIDGE	4	2	3	4	8	2	7	0	0	2	7	1	40	low	low
LEEROY COWEN	EMILY T COWEN			4	2	3	1	1	2	7	4	0	2	7	1	34	low	low
LEEROY COWEN	EMILY T COWEN	N5212 WILDCAT RD	IRON RIDGE	4	2	3	1	1	2	7	4	0	2	7	1	34	low	low
MATTHEW CHMIELEWSKI	A KATHRYN A CHMIELEWSKI	N5218 WILDCAT RD	IRON RIDGE	4	2	3	1	1	2	7	0	0	2	7	1	30	low	low
BONNETTE LIKWARZ	THOMAS LIKWARZ	N5222 WILDCAT RD	IRON RIDGE	2	2	3	1	0	2	7	0	0	2	7	1	27	low	low
T & T MASONRY INC		N5226 WILDCAT RD	IRON RIDGE	2	2	3	1	0	2	7	0	0	2	7	1	27	low	low
MATTHEW J LIKWARZ	PAULETTE R BACK	N5230 WILDCAT RD	IRON RIDGE	2	2	3	1	0	2	7	0	0	2	7	1	27	low	low
FREDERICK C SPIERING	SUSAN M GREIFENHAGEN	N5236 WILDCAT RD	IRON RIDGE	2	2	3	1	0	2	7	0	0	2	7	1	27	low	low
MICHAEL ALLES		N5240 WILDCAT RD	IRON RIDGE	2	2	3	1	0	2	7	7	0	2	7	1	34	low	low
GLORIA J WITTEBEL		N5244 WILDCAT RD	IRON RIDGE	2	2	3	1	0	2	7	1	0	2	4	1	25	low	low
PATRICIA A WILLIAMS		N5250 WILDCAT RD	IRON RIDGE	2	2	3	1	0	2	7	0	0	2	1	1	21	low	low
ROGER FUTTERER	CHERI FUTTERER	N5256 WILDCAT RD	IRON RIDGE	2	2	2	1	0	2	7	0	0	2	7	1	26	low	low
MILES F RILEY	BRENDAN S RILEY	N5262 WILDCAT RD	IRON RIDGE	2	2	2	1	0	2	7	0	0	0	7	1	24	low	low
THOMAS G SHEEHAN	KIM N SHEEHAN	N5270 WILDCAT RD	IRON RIDGE	0	2	2	1	0	2	7	4	0	1	4	1	24	low	low
DAVID M SWAN	MISTY L SWAN	N5195 WILDCAT RD	IRON RIDGE	4	2	3	4	8	2	7	0	0	2	7	1	40	low	moderate
HOWARD KROHN	BARBARA L KROHN	N5194 WILDCAT RD	IRON RIDGE	2	2	3	1	0	2	7	0	0	2	7	1	27	low	low
BLAINE R BURGE	TERRY A BURGE	N5187 + WILDCAT RD	IRON RIDGE	4	2	3	4	8	2	7	0	0	2	7	1	40	low	moderate
BLAINE R BURGE	TERRY A BURGE	N5187 + WILDCAT RD	IRON RIDGE	4	2	3	4	8	2	7	0	0	2	7	1	40	low	moderate
FRANK P MONACO TRUST	MARY F MONACO TRUST	N5183 WILDCAT RD	IRON RIDGE	4	2	3	4	8	2	7	0	0	2	7	1	40	low	moderate
PAULA J COLLINS		N5179 WILDCAT RD	IRON RIDGE	4	2	3	8	8	2	7	0	0	2	7	1	44	low	moderate
WILLIAM R LANGE JR	LORI B LANGE	N5175 WILDCAT RD	IRON RIDGE	4	2	3	8	8	2	0	0	0	2	7	1	37	low	moderate

WNER 1	OWNER 2	Property Address	Property City	MFS	D20S	D100S	SGS	SOS	BHS	BCS	BVS	BSS	ASS	AVS	BWS	EIS	EIS_CAT	SWH_CAT
JOHANN PARAPATICS	MARIA VACCARO	N5169 WILDCAT RD	IRON RIDGE	4	2	3	8	8	2	7	0	0	2	7	1	44	low	moderate
MICHAEL R MADDEN	SALLYANN MADDEN	N5161 WILDCAT RD	IRON RIDGE	4	2	3	8	8	2	0	0	0	2	7	1	37	low	moderate
JAMES E GRONOWSKI		N5155 WILDCAT RD	IRON RIDGE	4	2	3	8	4	2	7	0	0	2	7	1	40	low	moderate
NORMAN A KOHLI TRUST	LUCY A KOHLI TRUST	N5149 WILDCAT RD	IRON RIDGE	7	2	3	8	4	2	7	0	4	2	7	1	47	low	moderate
DONALD J ABBOTT	THERESA J ABBOTT	N5145 WILDCAT RD	IRON RIDGE	4	2	3	8	1	2	7	0	0	2	7	1	37	low	moderate
STEPHEN E BRADFIELD		N5150 WILDCAT RD	IRON RIDGE	4	2	3	8	1	2	7	4	0	2	7	1	41	low	moderate
WILLIAM P JONES SR	DIANE M JONES	N5156 WILDCAT RD	IRON RIDGE	2	2	2	8	0	2	7	0	0	2	7	1	33	low	moderate
MARTENS-TRILLING TRUE	VALUE HARDWARE INC			2	2	2	8	0	3	7	0	0	2	7	1	34	low	moderate
MARTENS-TRILLING TRUE	VALUE HARDWARE INC	N5166 WILDCAT RD	IRON RIDGE	2	2	2	8	0	3	7	0	0	2	7	1	34	low	moderate
STEVEN J KLGIS	CAROL KLGIS	N5174 WILDCAT RD	IRON RIDGE	2	2	2	8	0	2	7	0	0	2	7	1	33	low	low
MAX J HORWATICH TRUST	JUDITH A HORWATICH TRUST	N5180 WILDCAT RD	IRON RIDGE	2	2	2	4	0	2	7	0	0	2	1	1	23	low	low
HOWARD KROHN	BARBARA L KROHN	N5194 WILDCAT RD	IRON RIDGE	2	2	3	4	0	2	7	0	0	2	7	1	30	low	low
LUCIA R RADLOFF				4	2	2	8	8	2	7	1	7	0	7	1	49	moderate	NA
ROBERT S JAVOROSKI	LYNNANNE JAVOROSKI	N5106 BUTTERNUT CT	JUNEAU	4	2	3	8	1	2	7	4	0	2	7	1	41	low	moderate
RICHARD H FINK	KAREN M FINK	N5118 BUTTERNUT CT	JUNEAU	4	2	3	8	1	2	7	0	0	2	7	1	37	low	moderate
JAMES R WEPPNER	CATHERINE A WEPPNER	N5122 BUTTERNUT CT	JUNEAU	4	2	3	8	1	2	7	0	0	2	7	12	48	moderate	NA
MAYNARD KAUFFMAN	BETTY KAUFFMAN	N5130 BUTTERNUT CT	JUNEAU	4	2	3	8	1	2	7	0	0	2	7	12	48	moderate	NA
JAMES RASCHE	DENISE RASCHE	N5134 BUTTERNUT CT	JUNEAU	4	2	3	8	1	2	7	0	1	2	7	12	49	moderate	NA
DENNIS M SZCZUPAJ	CHRISTINE M SZCZUPAJ	N5146 BUTTERNUT CT	JUNEAU	4	2	3	8	1	2	7	0	1	2	7	12	49	moderate	NA
MICHAEL W LOTH	NANCY A LOTH	N5150 BUTTERNUT CT	JUNEAU	4	2	3	8	1	3	0	4	1	2	7	12	47	low	moderate
PAULINE H RYKOWSKI	%BETTY ELGER	N5156 BUTTERNUT CT	JUNEAU	7	2	3	8	1	3	7	0	0	2	7	12	52	moderate	NA
LILLIAN PIEPER	WALLACE PIEPER	N5160 BUTTERNUT CT	JUNEAU	4	2	3	8	1	2	7	0	0	2	7	12	48	moderate	NA
JOHN J DUNNE	JEAN R DUNNE	N5166 BUTTERNUT CT	JUNEAU	4	2	3	8	1	2	7	0	0	2	7	12	48	moderate	NA
ROBERT A LINERS TRUST	LOIS M LINERS TRUST	N5170 BUTTERNUT CT	JUNEAU	4	2	3	8	1	2	7	0	0	2	7	12	48	moderate	NA
RANDALL J RYSKOSKI	MARY S RYSKOSKI	N5174 BUTTERNUT CT	JUNEAU	4	2	3	8	1	3	7	0	0	2	7	12	49	moderate	NA
TERRY WENGER		N5178 BUTTERNUT CT	JUNEAU	4	2	3	8	1	2	7	0	0	2	7	12	48	moderate	NA

WNER 1	OWNER 2	Property Address	Property City	MFS	D20S	D100S	SGS	SOS	BHS	BCS	BVS	BSS	ASS	AVS	BWS	EIS	EIS_CAT	SWH_CAT
RODNEY STANTON	PEGGY STANTON	N5182 BUTTERNUT CT	JUNEAU	4	2	3	8	8	2	0	0	1	2	7	12	49	moderate	NA
LYNDA C FAUSER	PENNY A PHILP	N5175 BUTTERNUT CT	JUNEAU	4	2	3	8	8	2	7	0	0	2	7	1	44	low	low
FRANK W STRAINIS	SUSAN M STRAINIS	N5159 BUTTERNUT CT	JUNEAU	4	2	3	8	8	2	7	0	0	2	7	1	44	low	low
LAWRENCE WEISENSEL W	DONNA J WEISENSEL	N5149 BUTTERNUT CT	JUNEAU	4	2	3	4	8	2	7	4	0	2	7	1	44	low	low
TAYLOR C TAYLOR	CAROL J TAYLOR	N5141 BUTTERNUT CT	JUNEAU	4	2	3	4	8	2	7	1	1	2	7	1	42	low	low
THOMAS M SCHMIDT	LINDA M SCHMIDT	N5137 BUTTERNUT CT	JUNEAU	4	2	3	4	8	2	7	4	0	2	7	1	44	low	low
ROBERT A BEWALDA JR	CAROLYN BEWALDA	N5129 BUTTERNUT CT	JUNEAU	4	2	3	4	8	2	0	0	0	2	7	1	33	low	low
RHONDA S MILLER		N5121 BUTTERNUT CT	JUNEAU	4	2	2	4	8	2	7	0	0	2	7	1	39	low	low
VINCENT M PENA JR	RUTH C JOHNSON	N5117 BUTTERNUT CT	JUNEAU	4	2	2	4	8	2	0	0	0	2	7	1	32	low	low
KENNETH TWADELL	AMY TWADELL	N5109 BUTTERNUT CT	JUNEAU	4	2	2	1	8	2	7	1	1	2	1	1	32	low	low
FREDERICK J MICHELAU	MONICA J MICHELAU	W4410 + BUTTERNUT TR	JUNEAU	4	2	2	1	8	2	0	0	1	1	7	1	29	low	low
PAUL R MARCEAU	DAWN D MARCEAU	N5044 BUTTERNUT CT	JUNEAU	4	2	3	8	1	2	0	0	0	2	7	1	30	low	moderate
SCOTT D COLEY	KAREN M COLEY	N5050 BUTTERNUT CT	JUNEAU	4	2	3	8	1	2	0	0	0	2	7	1	30	low	moderate
DOROTHY M JUDYCKI		N5056 BUTTERNUT CT	JUNEAU	4	2	3	8	1	2	0	0	0	2	7	1	30	low	moderate
WILLIAM J HAYES	GERIANNE M HAYES	N5066 BUTTERNUT CT	JUNEAU	4	2	3	8	1	2	0	0	0	2	7	1	30	low	moderate
KATHRYN RILEY	LISA RIEGEMAN	N5072 BUTTERNUT CT	JUNEAU	4	2	3	8	1	2	0	0	0	1	7	1	29	low	moderate
DONALD E KUEHL	DONALD KOEHLER	N5080 BUTTERNUT CT	JUNEAU	4	2	3	8	1	2	7	4	0	1	7	1	40	low	moderate
ERNEST FRANK	LUCILLE FRANK	N5086 BUTTERNUT CT	JUNEAU	4	2	3	8	1	2	7	4	1	1	7	1	41	low	moderate
DALE C KOUTECKY	LORRAINE H KOUTECKY	N5094 BUTTERNUT CT	JUNEAU	4	2	3	8	1	3	7	1	1	2	7	1	40	low	moderate
JOSEPH DEBELAK	PATRICIA DEBELAK	N5098 BUTTERNUT CT	JUNEAU	4	2	3	8	1	3	7	1	0	2	7	1	39	low	moderate
WAYNE C SCHMIEDLIN	KATHY J SCHMIEDLIN	N5032 BUTTERNUT CT	JUNEAU	4	2	3	8	1	2	0	0	0	2	7	1	30	low	moderate
DANIEL M ZUEHLKE		N5026 BUTTERNUT CT	JUNEAU	4	2	3	8	1	3	0	4	1	2	7	1	36	low	moderate
MICHAEL J PILLIOD	MARY BETH PILLIOD	N5031 BUTTERNUT CT	JUNEAU	4	2	2	8	4	2	7	0	1	2	7	1	40	low	low

WNER 1	OWNER 2	Property Address	Property City	MFS	D20S	D100S	SGS	SOS	BHS	BCS	BVS	BSS	ASS	AVS	BWS	EIS	EIS_CAT	SWH_CAT
WILLIAM E SCHAEFER	JACLYNN M SCHAEFER	W4417 BUTTERNUT TR	JUNEAU	2	2	2	1	0	2	7	0	0	0	0	1	17	low	low
EDWIN GRUDZINSKI	DELORES GRUDZINSKI	N5085 BUTTERNUT CT	JUNEAU	4	2	2	1	4	2	0	0	0	2	7	1	25	low	low
JOAN V PAPE		N5069 BUTTERNUT CT	JUNEAU	2	2	2	1	0	2	0	0	1	2	7	1	20	low	low
RUSSELL M COLEY TRUST				2	2	2	1	0	2	0	0	1	2	7	1	20	low	low
RUSSELL M COLEY TRUST				2	2	2	1	0	2	0	0	1	2	7	1	20	low	low
ARROWHEAD PARK LIMITED	%RUSSELL COLEY			2	2	2	1	0	2	0	0	0	2	7	1	19	low	low
BETTY L MARBAN				0	1	1	1	0	2	7	1	7	0	1	1	22	low	low
BARBARA A KRAHN	GLENN R KATZUNG	N5196 COUNTY ROAD E		0	2	2	1	0	2	7	1	4	0	1	1	21	low	low
THOMAS C SWENDSON TRUST				4	1	2	4	1	2	7	1	7	0	7	1	37	low	moderate
THOMAS C SWENDSON TRUST				4	1	2	4	1	2	7	1	7	0	7	1	37	low	moderate
EVANGELINE G GUNKA ROBERT PROKOPOWICZ		COUNTY ROAD E	IRON RIDGE	4	1	2	4	1	2	7	1	7	0	7	1	37	low	moderate
KARL E ZARLING	NANCY E ZARLING	N5077 LAKE DR	HUSTISFORD	4	2	3	4	8	2	7	1	4	0	1	1	37	low	moderate
ROBERT W HAMANN	MARYJANE HAMANN	N5075 LAKE DR	HUSTISFORD	4	2	3	4	8	2	0	0	0	2	7	1	33	low	moderate
JOHN M FRIESCH	JANE U FRIESCH	N5071 LAKE DR	IRON RIDGE	4	2	3	4	8	2	0	0	0	2	7	1	33	low	moderate
STEPHEN E ABRAM	PAMELA C ABRAM	N5049 LAKE DR	HUSTISFORD	4	2	3	4	8	2	7	7	0	2	7	1	47	low	moderate
DENNIS WEGE		N5045 LAKE DR	HUSTISFORD	4	2	3	4	8	2	7	7	0	2	7	1	47	low	moderate
RALPH SCHMITZ	ARLENE SCHMITZ			4	2	3	4	8	3	7	0	0	2	7	1	41	low	moderate
RALPH SCHMITZ	ARLENE SCHMITZ	N5033 LAKE DR	HUSTISFORD	4	2	3	4	8	3	7	0	0	2	7	1	41	low	moderate
RANDALL L THOMPSON	ELIZABETH H THOMPSON	N5027 LAKE DR	HUSTISFORD	4	2	3	4	8	2	0	0	0	2	7	1	33	low	moderate
JAMES A VOGENTHALER	JUDITH A VOGENTHALER	N5021 LAKE DR	HUSTISFORD	4	2	3	4	8	2	0	0	0	2	7	1	33	low	moderate
WAYNE F FREDRICKS	BARBARA A FREDRICKS	N5015 LAKE DR	HUSTISFORD	4	2	3	4	8	2	7	0	0	2	7	1	40	low	moderate
WAYNE F FREDRICKS	BARBARA A FREDRICKS	N5011 LAKE DR	HUSTISFORD	4	2	3	4	8	2	7	0	0	2	7	1	40	low	moderate
JAMES O CURREN	DEBORAH A CURREN	N5001 LAKE DR	HUSTISFORD	4	2	3	4	8	2	7	0	0	2	7	1	40	low	moderate
TERRANCE CARPENTER	KATHLEEN M CARPENTER	N4999 LAKE DR	HUSTISFORD	4	2	3	4	8	2	7	4	4	2	7	1	48	moderate	NA
RANDALL L THOMPSON	ELIZABETH H THOMPSON	N4995 LAKE DR	HUSTISFORD	4	2	3	4	8	3	7	4	0	2	7	1	45	low	moderate
RANDALL THOMPSON	ELIZABETH THOMPSON			4	2	3	4	8	3	7	1	4	2	7	1	46	low	moderate
RANDALL L THOMPSON	ELIZABETH H THOMPSON	N4983 LAKE DR	HUSTISFORD	4	2	3	4	8	3	0	0	0	2	7	1	34	low	moderate
ROBERT D VANCASTER	DONNA J HAGEMANN	N4977 LAKE DR	HUSTISFORD	4	2	3	4	8	2	7	0	0	2	7	1	40	low	moderate
RANDALL L THOMPSON TRUST	ELIZABETH H THOMPSON TRU	N4973 + LAKE DR	HUSTISFORD	4	2	3	4	8	2	0	0	0	2	7	1	33	low	moderate
CORY D KELLY	JULIE R KELLY	N4969 + LAKE DR	HUSTISFORD	4	2	3	4	8	2	0	0	0	2	7	1	33	low	moderate
GARY R WIEMANN	CHRISTINE D WIEMANN	N4965 + LAKE DR	HUSTISFORD	4	2	3	4	8	3	7	4	1	2	4	1	43	low	moderate

WNER 1	OWNER 2	Property Address	Property City	MFS	D20S	D100S	SGS	SOS	BHS	BCS	BVS	BSS	ASS	AVS	BWS	EIS	EIS_CAT	SWH_CAT
ELROY R STERN SINISSIPPI PARTNERS LLC	%BRAD A BROGAN	N4961 LAKE DR	HUSTISFORD	4	2	3	4	8	3	0	0	4	2	7	1	38	low	moderate
		N4957 LAKE DR	HUSTISFORD	4	2	3	4	8	3	7	4	1	2	7	1	46	low	moderate
GREATER MILWAUKEE	PROPERTIES INC	N4945 LAKE DR	HUSTISFORD	4	2	3	4	8	3	7	1	0	2	7	1	42	low	moderate
FRANKLIN L TRAPP	JAMMIE TRAPP	N4941 LAKE DR	HUSTISFORD	7	2	3	4	8	3	7	1	4	2	4	1	46	low	moderate
JAMES E THESELIUS	DEBRA T FRANZKE	N4937 LAKE DR	HUSTISFORD	4	2	3	4	8	2	7	4	4	2	7	1	48	moderate	NA
SUSAN B ZEMAN		N4929 LAKE DR	HUSTISFORD	4	2	3	4	8	3	0	0	0	2	7	1	34	low	moderate
RICHARD L OKON		N4925 LAKE DR	HUSTISFORD	4	2	3	4	8	2	0	0	0	2	7	1	33	low	moderate
LOUIS J TIEFENTHALER	RUTH R TIEFENTHALER	N4917 LAKE DR	HUSTISFORD	4	2	3	4	8	3	7	4	0	2	7	1	45	low	moderate
DAVID R JONES	PATRICIA E JONES	N4913 + LAKE DR	HUSTISFORD	4	2	3	4	8	3	0	0	0	2	7	1	34	low	moderate
MARTIN G PEKRUL		N4909 + LAKE DR	HUSTISFORD	4	2	3	4	8	3	0	0	0	2	7	1	34	low	moderate
MARK T MAHAN JR		N4907 LAKE DR	HUSTISFORD	4	2	3	4	8	4	0	0	0	2	7	1	35	low	moderate
JAMES C OLSEN		N4903 + LAKE DR	HUSTISFORD	7	2	3	4	8	4	7	1	4	2	7	1	50	moderate	NA
JOHN C CHAMBERS JR		N4511 COUNTY ROAD E	HUSTISFORD	2	2	2	4	0	2	7	0	0	1	7	12	39	low	moderate
DEBORAH HILL	CORWIN HILL	N4515 COUNTY ROAD E	HUSTISFORD	2	2	3	4	0	2	7	0	0	2	7	12	41	low	moderate
LORAIN J DOBRAFF		N4895 LAKE DR	HUSTISFORD	7	2	3	4	8	4	0	0	0	2	7	1	38	low	moderate
LORAIN J DOBRAFF				7	2	3	4	8	2	7	7	0	2	7	1	50	moderate	NA
HAROLD L KEY		N4891 LAKE DR	HUSTISFORD	4	2	3	4	8	2	0	0	0	2	7	1	33	low	moderate
HAROLD L KEY		N4885 + LAKE DR	HUSTISFORD	4	2	3	4	8	2	0	0	0	2	7	1	33	low	moderate
HAROLD L KEY		N4885 + LAKE DR	HUSTISFORD	7	2	3	4	8	2	0	0	0	2	7	1	36	low	moderate
ROY M ROSENTHAL				7	2	3	4	8	2	0	0	0	2	7	1	36	low	moderate
ROY M ROSENTHAL		N4879 LAKE DR	HUSTISFORD	4	2	3	4	8	3	0	0	0	2	7	1	34	low	moderate
JANICE D MILLER	DUANE L MILLER	N4873 LAKE DR	HUSTISFORD	4	2	3	4	8	2	0	0	0	2	7	1	33	low	moderate
BARTON H GLEASON	SUSAN J GLEASON	N4869 LAKE DR	HUSTISFORD	4	2	3	4	8	2	0	0	0	2	7	1	33	low	moderate
LAWRENCE J KNUTH	DIANE L KNUTH	N4859 LAKE DR	HUSTISFORD	4	2	3	4	8	2	7	4	0	2	7	1	44	low	moderate
SARA SHULTIS	SUE OSOWSKI	N4857 LAKE DR	HUSTISFORD	4	2	3	4	8	2	7	4	0	2	7	1	44	low	moderate
KELLY E KREITZMAN	THERESE A KREITZMAN	N4851 LAKE DR	HUSTISFORD	4	2	2	4	8	2	7	4	0	2	7	1	43	low	moderate
THOMAS J BYRNE		N4847 LAKE DR	HUSTISFORD	4	2	2	4	8	2	7	0	0	2	7	1	39	low	moderate
JUDITH R SCHAEFER		N4839 LAKE DR	HUSTISFORD	4	2	2	4	4	2	0	0	0	2	7	1	28	low	moderate
THOMAS J TARTAGLIA	CYNTHIA J TARTAGLIA	N4833 LAKE DR	HUSTISFORD	4	2	3	4	4	2	7	0	0	2	4	1	33	low	moderate
DECKSTAR PARTNERSHIP				4	2	3	4	8	2	0	0	0	2	7	1	33	low	moderate
DECKSTAR PARTNERSHIP		N4827 LAKE DR	HUSTISFORD	4	2	3	4	8	2	0	0	0	2	7	1	33	low	moderate
GREGG F APOSTOLOFF	ANGELA H APOSTOLOFF	N4823 LAKE DR	HUSTISFORD	7	2	3	4	8	2	0	0	0	2	7	1	36	low	moderate
CLIVE FRAZIER TRUST		N4815 LAKE DR	HUSTISFORD	4	2	3	4	8	2	0	0	0	2	7	1	33	low	moderate

WNER 1	OWNER 2	Property Address	Property City	MFS	D20S	D100S	SGS	SOS	BHS	BCS	BVS	BSS	ASS	AVS	BWS	EIS	EIS_CAT	SWH_CAT
CLIVE FRAZIER TRUST		N4809 LAKE DR	HUSTISFORD	4	2	3	4	8	2	0	0	0	2	7	1	33	low	moderate
BRIAN J VIS	ELIZABETH J VIS	N4801 LAKE DR	HUSTISFORD	4	2	3	4	8	2	7	0	0	2	7	1	40	low	moderate
DELBERT W BONVILLE TRUST		N4791 LAKE DR	HUSTISFORD	4	2	3	4	8	2	0	0	1	2	7	1	34	low	moderate
PATRICK K KLESSIG		N4787 LAKE DR	HUSTISFORD	4	2	3	4	8	2	0	0	0	2	7	1	33	low	moderate
CYNTHIA L TEWS		N4785 LAKE DR	HUSTISFORD	7	2	3	4	8	2	0	4	0	2	7	1	40	low	moderate
KAREN M RAMEY	MARJORIE E COFFEE	N4781 LAKE DR	HUSTISFORD	4	2	3	4	8	3	0	0	0	2	7	1	34	low	moderate
KAREN M RAMEY	MARJORIE E COFFEE			4	2	3	4	8	3	0	0	0	2	7	1	34	low	moderate
ARTHUR E FRIEDMAN	EDWARD E MESHESKI	N4775 LAKE DR	HUSTISFORD	4	2	3	4	8	2	7	1	4	2	7	1	45	low	moderate
GARY R WIEMANN	CHRISTINE D WIEMANN	N4771 LAKE DR	HUSTISFORD	7	2	3	4	8	2	0	0	0	2	7	1	36	low	moderate
D BEHL-STRASSBURG TRUST		N4767 LAKE DR	HUSTISFORD	7	2	3	4	8	2	0	0	0	2	7	1	36	low	moderate
TIMOTHY FITZSIMMONS	L	N4763 LAKE DR	HUSTISFORD	7	2	3	4	8	3	0	0	0	2	7	1	37	low	moderate
DONALD C OLYNYK	KAREN E OLYNYK	N4761 LAKE DR	HUSTISFORD	4	2	3	4	8	2	0	0	0	2	7	1	33	low	moderate
ARTHUR R STRAUSS	RENEE M STRAUSS	N4755 LAKE DR	HUSTISFORD	4	2	3	4	8	2	0	0	4	0	7	1	35	low	moderate
ROBERT J PIETROWSKI	FRANCINE J PIETROWSKI	N4749 LAKE DR	HUSTISFORD	4	2	3	4	8	3	0	0	0	2	7	1	34	low	moderate
ROBERT C GIBBONS	SHARON M GIBBONS	N4743 LAKE DR	HUSTISFORD	4	2	3	4	8	3	0	0	0	2	7	1	34	low	moderate
FRANKLIN FREINWALD TRUST	PEARL F FREINWALD TRUST	N4739 LAKE DR	HUSTISFORD	4	2	3	4	8	3	0	0	0	2	7	1	34	low	moderate
TIMOTHY F GALECKE		N4733 LAKE DR	HUSTISFORD	4	2	3	4	8	2	0	0	0	2	7	1	33	low	moderate
MARK D KNUDTSON	CHRIS EISENMANN KNUDTSON	N4729 LAKE DR	HUSTISFORD	4	2	3	4	8	2	0	0	0	2	7	1	33	low	moderate
RICHARD HAFEMEISTER	G	N4727 LAKE DR	HUSTISFORD	4	2	2	4	8	2	0	0	0	2	7	1	32	low	moderate
ARNOLD H FREDRICK	ARDIS A FREDRICK	N4723 LAKE DR	HUSTISFORD	7	2	2	4	8	2	0	0	0	2	7	1	35	low	moderate
THOMAS R FAUBEL	BARBARA E FAUBEL	N4719 LAKE DR	HUSTISFORD	4	2	2	4	8	3	0	0	0	2	7	1	33	low	moderate
SCOTT A WRIGHT	MARY E WRIGHT	N4715 LAKE DR	HUSTISFORD	4	2	2	4	8	3	0	0	0	2	7	1	33	low	moderate
VINCENT DECARIA	DIANE S DECARIA	N4711 LAKE DR	HUSTISFORD	4	2	3	4	4	3	0	0	0	2	7	1	30	low	moderate
CAMPERS INCORPORATED				2	1	1	1	0	2	7	1	7	0	1	1	24	low	low
BETTY L MARBAN				0	1	1	1	0	2	7	1	7	0	1	1	22	low	low
CAMPERS INCORPORATED				0	1	4	4	0	3	7	1	7	0	1	12	40	low	low
CAMPERS INCORPORATED				2	1	2	1	4	2	7	1	4	0	1	1	26	low	low
CAMPERS INCORPORATED				0	1	1	1	0	2	7	1	7	0	1	1	22	low	low
CAMPERS INCORPORATED				2	1	2	4	8	2	7	0	0	2	7	1	36	low	low
GUS N KOKONAS TRUST	EDDA KOKONAS TRUST	N4707 LAKE DR	HUSTISFORD	4	2	3	4	4	2	0	0	0	2	7	1	29	low	moderate
CRAIG S HOUGH	ALICIA T HOUGH	N4703 LAKE DR	HUSTISFORD	4	2	3	4	4	3	0	0	0	2	7	1	30	low	moderate
RICHARD L PLOEGER	JUDITH A PLOEGER	N4699 LAKE DR	HUSTISFORD	4	2	3	4	4	2	0	0	0	2	7	1	29	low	moderate
DONALD J KLINGER		N4689 LAKE DR	HUSTISFORD	4	2	3	4	4	2	0	0	0	2	7	1	29	low	moderate

WNER 1	OWNER 2	Property Address	Property City	MFS	D20S	D100S	SGS	SOS	BHS	BCS	BVS	BSS	ASS	AVS	BWS	EIS	EIS_CAT	SWH_CAT
TROY T THOM	TERESA A THOM	N4685 LAKE DR	HUSTISFORD	4	2	3	4	4	2	0	0	0	2	7	1	29	low	moderate
ROBERT J MUELLER	BEVERLY J MUELLER	N4683 LAKE DR	HUSTISFORD	4	2	3	4	8	2	0	0	0	2	7	1	33	low	moderate
JEAN L KIEPERT TRUST		N4679 LAKE DR	HUSTISFORD	4	2	3	8	8	2	7	4	0	2	7	12	59	moderate	NA
BRIAN J MILLER		N4675 LAKE DR	HUSTISFORD	4	2	3	1	1	2	0	0	0	2	7	12	34	low	low
RANDALL L THOMPSON	ELIZABETH H THOMPSON	N4667 LAKE DR	HUSTISFORD	2	2	3	1	0	2	7	0	0	2	7	12	38	low	low
KEVIN V DIETRICH	CHERYL L DIETRICH	N4663 LAKE DR	HUSTISFORD	4	2	3	4	4	2	7	0	0	2	4	12	44	low	low
JOHN R ANDERSON	SUSAN A ANDERSON	N4657 LAKE DR	HUSTISFORD	2	2	3	4	0	2	0	0	0	2	7	12	34	low	low
JAMES W DOHEARTY	JOAN C DOHEARTY	N4653 LAKE DR	HUSTISFORD	2	2	3	4	0	2	0	0	0	2	4	12	31	low	low
PATRICIA A BERNA		N4649 LAKE DR	HUSTISFORD	2	2	3	4	0	2	7	1	0	2	7	12	42	low	low
JOSEPH A JUNG JR	JEFFREY S JUNG	N4643 LAKE DR	HUSTISFORD	4	2	3	4	4	2	0	0	0	2	7	12	40	low	low
BRIAN H STARK	CHERYL M STARK	N4639 LAKE DR	HUSTISFORD	4	2	3	4	4	2	7	0	0	2	7	12	47	low	low
DENNIS L RUEGG		N4633 LAKE DR	HUSTISFORD	2	2	3	4	0	2	0	0	0	2	7	12	34	low	low
JEROME J BILGRIEN	JEAN A BILGRIEN	N4631 LAKE DR	HUSTISFORD	2	2	3	4	0	3	0	0	0	2	7	12	35	low	low
WILTON E KERLINSKE	MARIAN E KERLINSKE	N4627 LAKE DR	HUSTISFORD	2	2	3	4	0	2	0	0	0	2	7	12	34	low	low
CLIFFORD H MAAS	SHERRY L MAAS	N4625 LAKE DR	HUSTISFORD	4	2	3	4	8	2	0	0	0	2	7	12	44	low	low
JOSEPH P GUASTELLA	ROCHELLE K GUASTELLA	N4623 LAKE DR	HUSTISFORD	4	2	3	4	8	2	0	0	0	2	7	12	44	low	low
MICHAEL STRASSBURG		N4621 LAKE DR	HUSTISFORD	4	2	3	8	4	2	0	0	0	2	7	12	44	low	low
JEREMY C GILL	KRISTYN L GILL	N4619 LAKE DR	HUSTISFORD	2	2	3	1	0	2	7	0	0	2	7	12	38	low	low
GREGORY RYAN	LAURA B MAROLDI	N4615 LAKE DR	HUSTISFORD	2	2	3	1	0	2	0	0	0	2	7	12	31	low	low
JOHN E CAPPELLI		N4605 LAKE DR	HUSTISFORD	0	2	3	1	0	2	0	0	0	2	7	12	29	low	low
ROGER A COCHRANE	DANA M COCHRANE	N4607 COUNTY ROAD E	HUSTISFORD	2	2	3	1	0	2	0	4	0	2	7	12	35	low	low
JOSEPH A KRAYNICK	PATRICIA A KRAYNICK	W4152 ANTHONY ISLAND	HUSTISFORD	4	2	3	8	8	3	7	4	0	2	7	12	60	moderate	NA
JOSEPH A KRAYNICK	PATRICIA A KRAYNICK	W4152 ANTHONY ISLAND	HUSTISFORD	4	2	3	8	8	3	7	4	4	0	7	1	51	moderate	NA
SINISSIPPI LAKE REALTY		ANTHONY ISLAND	HUSTISFORD	4	2	3	8	8	3	7	4	0	2	7	12	60	moderate	NA
RAYMOND O JACOBSON TRUST	OLIVE L JACOBSON TRUST	W4164 ANTHONY ISLAND	HUSTISFORD	4	2	3	8	1	2	7	0	0	2	7	12	48	moderate	NA
KEITH W TUCKER	DEBORA K TUCKER	W4174 ANTHONY ISLAND	HUSTISFORD	4	2	3	8	8	2	7	4	4	2	7	12	63	moderate	NA
BURDICK TRUST		N4531 ANTHONY ISLAND	HUSTISFORD	4	2	2	8	8	2	7	4	0	2	7	12	58	moderate	NA
NEIL FELDMANN	GAIL CAVANAUGH	N4525 ANTHONY ISLAND	HUSTISFORD	4	2	3	8	8	2	7	0	0	2	7	12	55	moderate	NA
MYRBETH W CULVER	WELLS CULVER III	N4519 ANTHONY ISLAND	HUSTISFORD	4	2	3	8	8	2	7	4	4	2	7	12	63	moderate	NA

WNER 1	OWNER 2	Property Address	Property City	MFS	D20S	D100S	SGS	SOS	BHS	BCS	BVS	BSS	ASS	AVS	BWS	EIS	EIS_CAT	SWH_CAT
JAMES D VOGT		ANTHONY ISLAND		4	2	3	8	8	2	7	0	0	2	7	12	55	moderate	NA
JAMES D VOGT		N4513 ANTHONY ISLAND	HUSTISFORD	4	2	3	8	8	2	7	0	0	2	7	12	55	moderate	NA
DEBORAH A HOWARD	DAVID P HOWARD	N4509 ANTHONY ISLAND	HUSTISFORD	4	2	3	8	4	2	7	0	0	2	7	12	51	moderate	NA
DAVID P HOWARD	DEBORAH A HOWARD	ANTHONY ISLAND		4	2	3	8	8	2	7	0	0	1	7	12	54	moderate	NA
DAVID P HOWARD	DEBORAH A HOWARD	N4501 ANTHONY ISLAND	HUSTISFORD	4	2	3	8	8	2	7	0	0	1	7	12	54	moderate	NA
DEBORAH A HILL	PATRICIA GUTIERREZ	N4519 COUNTY ROAD E	HUSTISFORD	2	2	3	4	0	2	7	0	0	2	7	12	41	low	moderate
DEBORAH A HILL	PATRICIA GUTIERREZ	N4519 COUNTY ROAD E	HUSTISFORD	2	2	3	4	0	2	7	0	0	2	7	12	41	low	moderate
PETER PARENTE		N4521 COUNTY ROAD E	HUSTISFORD	2	2	3	4	0	2	7	0	0	2	7	12	41	low	moderate
DEBRA A STEWART		N4527 COUNTY ROAD E	HUSTISFORD	2	2	3	4	0	2	7	0	4	2	7	12	45	low	moderate
SCOTT L GRIGG	JUDITH A CHAMBERS	N4531 COUNTY ROAD E	HUSTISFORD	4	2	2	4	8	2	7	0	0	2	7	12	50	moderate	NA
RALPH W SCHULZ	MYRTLE E SCHULZ	N4547 COUNTY ROAD E	HUSTISFORD	4	2	2	4	8	2	7	0	0	2	7	12	50	moderate	NA
SINISSIPPI ADVANCE ISLE		N4565 COUNTY ROAD E	HUSTISFORD	4	2	3	8	8	3	7	4	4	0	7	1	51	moderate	NA
KAREN P O'GORMAN		N4571 COUNTY ROAD E	HUSTISFORD	4	2	3	4	8	2	7	7	0	2	7	12	58	moderate	NA
RITA K SCHROEDER		N4575 COUNTY ROAD E	HUSTISFORD	4	2	3	4	8	2	7	4	0	2	7	12	55	moderate	NA
CHARLES KAEPERNICK A	MARY D KAEPERNICK	N4579 COUNTY ROAD E	HUSTISFORD	4	2	3	4	8	2	7	4	0	2	7	12	55	moderate	NA
RANDALL STRASSBURG W		N4583 COUNTY ROAD E	HUSTISFORD	4	2	2	4	8	2	0	0	0	2	7	12	43	low	low
RANDALL STRASSBURG W		N4587 COUNTY ROAD E	HUSTISFORD	2	2	3	4	0	2	0	0	0	2	7	12	34	low	low
ROBERT D BAILEY	DONNALEE BAILEY	N4599 COUNTY ROAD E	HUSTISFORD	2	2	3	4	0	2	0	0	0	2	7	12	34	low	low
STEVEN A KELSEY		N4603 COUNTY ROAD E	HUSTISFORD	2	2	3	4	0	2	0	0	0	2	7	12	34	low	low
DONALD MYLES		N4544 * ANTHONY ISLAND	HUSTISFORD	2	2	3	8	0	2	7	4	0	1	7	12	48	moderate	NA
LEONARD J GRACE	MARILYN C GRACE	N4544 * ANTHONY ISLAND	HUSTISFORD	2	2	3	8	0	2	7	1	4	2	7	12	50	moderate	NA
CAROL J BARCLAY	DAVID M BARCLAY	W4122 ANTHONY ISLAND	HUSTISFORD	7	2	3	8	1	2	7	4	0	2	7	12	55	moderate	NA

WNER 1	OWNER 2	Property Address	Property City	MFS	D20S	D100S	SGS	SOS	BHS	BCS	BVS	BSS	ASS	AVS	BWS	EIS	EIS_CAT	SWH_CAT
KENNETH J BUETTNER	EVELYN M BUETTNER	W4126 ANTHONY ISLAND	HUSTISFORD	4	2	3	8	1	2	7	4	0	2	7	12	52	moderate	NA
STEVEN GALOVICH	ELIZABETH CULVER	W4130 ANTHONY ISLAND	HUSTISFORD	4	2	3	8	1	2	7	1	4	2	7	12	53	moderate	NA
CHRISTINE ROZMENOSKI	C	ANTHONY ISLAND		4	2	3	8	1	2	7	1	0	2	7	12	49	moderate	NA
CHRISTINE ROZMENOSKI	C	ANTHONY ISLAND		2	2	3	8	8	2	7	1	0	2	7	12	54	moderate	NA
CHRISTINE ROZMENOSKI	C	W4142 ANTHONY ISLAND	HUSTISFORD	4	2	3	8	8	2	7	0	0	2	7	12	55	moderate	NA
P J FITZPATRICK TRUST		W4532 ANTHONY ISLAND	HUSTISFORD	2	2	3	8	0	2	7	4	4	1	7	12	52	moderate	NA
P J FITZPATRICK TRUST		ANTHONY ISLAND		2	2	3	8	0	2	7	4	4	1	7	12	52	moderate	NA
P J FITZPATRICK TRUST		ANTHONY ISLAND		2	2	3	8	0	2	7	4	4	1	7	12	52	moderate	NA
RICARDO F KALYBATAS	MARIA C KALYBATAS	ANTHONY ISLAND		2	2	3	8	0	2	7	4	4	1	7	12	52	moderate	NA
STANDARD BANK & TRUST CO		N4518 ANTHONY ISLAND	HUSTISFORD	2	2	3	8	0	2	7	4	0	2	7	12	49	moderate	NA
KEVIN BENSON	KAREN L BENSON	N4510 ANTHONY ISLAND	HUSTISFORD	2	2	3	8	0	2	7	4	4	2	7	12	53	moderate	NA
KEVIN BENSON	KAREN L BENSON	N4504 ANTHONY ISLAND	HUSTISFORD	2	2	3	8	0	2	7	4	1	1	7	12	49	moderate	NA
KEVIN BENSON	KAREN L BENSON	ANTHONY ISLAND		2	2	3	8	0	2	7	4	4	1	7	12	52	moderate	NA
GERMER TRUST				4	2	2	8	1	3	7	0	1	0	7	1	36	low	moderate
RUSSELL M COLEY				4	1	2	1	1	2	7	1	7	0	1	1	28	low	low
RONALD L KRUPA	MARYANN KRUPA	N4896 SINISSIPPI POINT RD	JUNEAU	7	2	3	4	1	2	7	4	4	2	7	1	44	low	moderate
MALCOLM E GIENKE	MARTHA M GIENKE	N4852 SINISSIPPI POINT RD	JUNEAU	4	2	3	4	1	2	7	1	4	1	1	1	31	low	moderate
JOHN F OSOWSKI	JENNIFER KRON	N4895 SPEARHEAD TR	JUNEAU	2	2	2	1	0	2	7	0	0	2	7	1	26	low	low
TERRENCE MCCLOSKEY	W	TIMOTHY J MCCLOSKEY		2	2	2	1	0	2	7	1	0	0	7	1	25	low	low
TERRENCE MCCLOSKEY	W			2	2	2	1	0	2	7	1	0	0	7	1	25	low	low
PETER G HAFEMEISTER	SANDRA L HAFEMEISTER	N4875 SINISSIPPI POINT RD	JUNEAU	2	2	2	1	0	2	7	1	4	0	1	1	23	low	low
RICHARD M MLADIC	JULIE B MLADIC	N4869 SINISSIPPI POINT RD	JUNEAU	2	2	2	1	0	2	7	1	4	0	1	1	23	low	low
ROBERT E LOOS	SANDRA L MIRESE	N4863 SINISSIPPI POINT RD	JUNEAU	2	2	2	1	0	2	7	1	4	0	1	1	23	low	low
SANDRA L MIRESE		N4855 SINISSIPPI POINT RD	JUNEAU	2	2	2	1	0	2	7	1	4	0	1	1	23	low	low

WNER 1	OWNER 2	Property Address	Property City	MFS	D20S	D100S	SGS	SOS	BHS	BCS	BVS	BSS	ASS	AVS	BWS	EIS	EIS_CAT	SWH_CAT
KATHLEEN MARIE		N4845 SINISSIPPI POINT RD	JUNEAU	2	2	2	1	0	2	7	1	4	0	1	1	23	low	low
TIMOTHY G RIDDLE				2	2	2	1	0	2	7	1	4	0	1	1	23	low	low
TIMOTHY G RIDDLE	DONNA J RIDDLE	N4829 SINISSIPPI POINT RD	JUNEAU	0	2	2	1	0	2	7	1	4	0	1	1	21	low	low
ANTHONY DESTEFANO	V	N4819 SINISSIPPI POINT RD	JUNEAU	0	2	2	1	0	2	7	1	4	0	1	1	21	low	low
CARLA A KNOPP		N4803 SINISSIPPI POINT RD	JUNEAU	0	2	2	1	0	2	7	1	4	0	1	1	21	low	low
GREGORY K GASPER	MARY J GASPER	N4878 SINISSIPPI POINT RD	JUNEAU	7	2	2	4	1	2	7	1	0	0	1	1	28	low	moderate
RUSSELL M COLEY TRUST		N4870 SINISSIPPI POINT RD	JUNEAU	7	2	3	4	1	2	7	1	4	0	1	1	33	low	moderate
DENNIS S NONCEK	HELEN E NONCEK	N4858 SINISSIPPI POINT RD	JUNEAU	7	2	3	4	1	2	7	1	4	0	1	1	33	low	moderate
LAWRENCE P SULLIVAN				2	1	2	1	4	2	7	1	4	0	1	1	26	low	low
RANDY THOM	KAREN THOM	N4774 SINISSIPPI POINT RD	JUNEAU	2	2	2	1	0	2	7	1	4	0	1	1	23	low	moderate
LOUIS RADLOFF	%ANGELA APOSTOLOFF POA			2	1	2	1	4	2	7	1	4	0	1	1	26	low	low
GERMER TRUST				4	2	2	4	1	3	7	0	1	0	7	1	32	low	moderate
GERMER TRUST		N4554 LAKEVIEW RD	HUSTISFORD	4	2	2	4	1	2	7	0	0	1	7	1	31	low	moderate
CURTIS H KUEHL	LAURIE A KUEHL	N4506 LAKEVIEW RD	HUSTISFORD	4	2	2	4	1	2	7	0	0	2	7	1	32	low	moderate
LAWRENCE P SULLIVAN				2	2	2	1	0	2	7	1	7	0	1	1	26	low	low
GREGORY M FARNHAM				2	2	2	4	1	2	7	1	7	0	1	1	30	low	low
VICTOR H RADLOFF JR		N4816 ARROWHEAD TR	JUNEAU	0	2	2	1	0	2	7	1	4	0	1	1	21	low	low
BETTY L MARBAN		N4394 LAKEVIEW RD	HUSTISFORD	4	2	3	8	1	2	7	0	0	2	7	1	37	low	moderate
BETTY L MARBAN		N4426 LAKEVIEW RD	HUSTISFORD	4	2	3	4	1	2	7	0	0	2	7	1	33	low	moderate
ISLAND WOODS LLC	%WELLS CULVER			2	2	3	8	0	2	7	4	4	0	7	12	51	moderate	NA
ISLAND WOODS LLC	%WELLS CULVER			4	2	3	4	8	2	0	0	0	2	7	12	44	low	low
ARDELL KIEFER	GERDA E KIEFER	N4327 COUNTY ROAD E	HUSTISFORD	2	2	4	4	0	2	0	0	0	2	7	12	35	low	low
THERESA HENSEL				2	2	3	4	0	2	0	0	0	2	7	12	34	low	low
DONALD L MILLER				4	2	3	8	8	2	7	1	4	0	7	12	58	moderate	NA
DONALD L MILLER				4	2	3	8	1	2	7	1	4	0	7	12	51	moderate	NA
DONALD LEE MILLER				4	2	3	8	1	2	7	1	4	0	7	12	51	moderate	NA
DONALD L MILLER				4	2	3	8	1	2	7	1	4	0	7	12	51	moderate	NA
DONALD L MILLER				4	2	3	8	1	2	7	1	4	0	7	12	51	moderate	NA
DONALD L MILLER				4	2	3	8	1	2	7	1	4	0	7	12	51	moderate	NA
DONALD L MILLER				4	2	3	8	4	2	7	1	4	0	7	6	48	moderate	NA
DONALD L MILLER				4	2	3	8	4	2	7	1	4	0	7	6	48	moderate	NA
DONALD L MILLER				4	2	3	8	8	2	7	1	4	0	7	6	52	moderate	NA
DONALD L MILLER				4	2	3	8	4	2	7	1	4	0	7	6	48	moderate	moderate
DONALD L MILLER				4	2	3	4	8	2	7	1	4	0	7	6	48	moderate	NA
DONALD L MILLER				4	2	3	8	8	2	7	1	4	0	7	6	52	moderate	NA
ARTHUR E JAHN TRUST	KATHLEEN A JAHN TRUST			4	2	2	8	8	2	7	1	7	0	4	1	46	low	moderate

WNER 1	OWNER 2	Property Address	Property City	MFS	D20S	D100S	SGS	SOS	BHS	BCS	BVS	BSS	ASS	AVS	BWS	EIS	EIS_CAT	SWH_CAT
GERMER TRUST				2	2	2	8	0	2	7	7	7	0	7	12	56	moderate	NA
RAYMOND HELD	MILDRED HELD			4	2	3	4	8	2	7	0	0	2	7	12	51	moderate	moderate
DANIEL F KEULER	MARGARET F KEULER	W5003 COUNTY ROAD S	HORICON	2	2	2	1	0	2	0	0	0	2	7	1	19	low	low
JAMES S HACKA	ROBIN KRANE	W5005 COUNTY ROAD S	HORICON	2	2	2	1	0	2	7	0	0	1	7	1	25	low	low
THOMAS J PERSHA	CINDY L PERSHA	W4907 COUNTY ROAD S	HORICON	2	2	3	1	0	2	7	1	4	0	1	1	24	low	low
DANIEL J BILLINGTON		W4913 COUNTY ROAD S	HORICON	0	2	3	1	0	2	7	0	0	0	4	1	20	low	low
MARY DOUGHTY		W4943 COUNTY ROAD S	HORICON	0	2	3	1	0	2	7	0	0	1	4	1	21	low	low
CHAD C BUELTER	CARLA A WOLFE	W4961 COUNTY ROAD S	HORICON	2	2	3	1	0	2	0	0	0	2	4	1	17	low	low
DENNIS T WELAK	KIM M WELAK	W4971 COUNTY ROAD S	HORICON	0	2	2	1	0	2	0	0	0	2	1	1	11	low	low
JAMES A KETCHEM	CARRIE J KETCHEM	W4977 COUNTY ROAD S	HORICON	0	2	2	1	0	2	0	0	0	2	7	1	17	low	low
KENNETH J LINDOW	CAROL A LINDOW	W4995 COUNTY ROAD S	HORICON	2	2	2	1	0	2	7	0	0	2	0	1	19	low	low
DAVID A WENINGER	RITA A WENINGER	W5001 COUNTY ROAD S	HORICON	2	2	2	1	0	1	7	0	0	2	7	1	25	low	low
WILLIAM H GETTELMAN	ROXANNE GETTELMAN	W4901 COUNTY ROAD S	HORICON	0	2	2	8	0	2	7	1	7	0	1	12	42	low	low
DEBORAH A BENNETT				2	2	3	1	0	2	7	1	4	1	1	12	36	low	low
MICHAEL J MCCARTHY	CLAUDIA A MCCARTHY	N6084 BENNETT'S RD	HORICON	2	2	3	1	0	2	7	1	0	2	4	1	25	low	low
STEVEN A TISCHER	LUCILLE A TISCHER	N6096 BENNETT'S RD	HORICON	2	2	3	1	0	2	7	0	0	2	7	1	27	low	low
RICHARD C BENNETT	DONNA J BENNETT	N6070 BENNETT'S RD	HORICON	2	2	3	1	0	2	7	1	1	2	1	1	23	low	low
SNYDER TRUST		N6056 BENNETT'S RD	HORICON	2	2	2	1	0	2	7	0	0	1	7	1	25	low	low
WILLIAM R SCHULTZ	KATHRYN M SCHULTZ	N6050 BENNETT'S RD	HORICON	2	2	2	1	0	2	7	0	0	1	4	1	22	low	low
MICHAEL J BARZANO		N6036 BENNETT'S RD	HORICON	2	2	3	1	0	2	7	1	4	1	1	12	36	low	low
KYUNG CHO		BENNETT'S RD	HORICON	2	2	3	1	0	2	7	1	4	1	1	12	36	low	low
DEBORAH A BENNETT		N5978 BENNETT'S RD	HORICON	2	2	2	1	0	2	7	4	4	0	4	1	29	low	low
RICHARD C BENNETT	DONNA J BENNETT			2	2	2	1	0	2	7	4	7	0	4	1	32	low	low
GILBERT F BENNETT	BETTY J BENNETT			2	2	2	1	0	2	7	4	7	0	4	1	32	low	low
GILBERT F BENNETT	BETTY J BENNETT			2	2	2	1	0	2	7	4	7	0	4	1	32	low	low
BERNARD A COHEN		NO# CABN		0	2	2	8	0	2	7	1	7	0	1	12	42	low	low
RUSHY GLEN INC				2	2	2	1	0	2	7	4	7	0	4	1	32	low	low
CLARAJEAN LAATSCH	FLOYD O LEHMANN	N5520 ST HELENA RD	JUNEAU	0	2	2	1	0	2	7	1	1	0	7	1	24	low	low
CLARAJEAN LAATSCH	FLOYD O LEHMANN			4	2	3	8	8	3	7	4	4	0	7	1	51	moderate	NA
THIEME FARM INC				2	2	2	4	1	2	7	1	7	0	1	1	30	low	low
GREGORY M FARNHAM	MARY C WARD-FARNHAM			2	2	2	4	1	2	7	1	7	0	1	1	30	low	low

WNER 1	OWNER 2	Property Address	Property City	MFS	D20S	D100S	SGS	SOS	BHS	BCS	BVS	BSS	ASS	AVS	BWS	EIS	EIS_CAT	SWH_CAT
GREGORY M FARNHAM	MARY C WARD-FARNHAM	N5026 + ST HELENA RD	JUNEAU	2	2	2	4	0	2	7	1	7	0	1	1	29	low	low
WILLIAM L KIDDER	MARIE N KIDDER	LAKEVIEW RD	HUSTISFORD	4	2	3	8	4	3	7	4	4	0	7	1	47	low	low
ROBERT G BROUWER	JUDITH M BROUWER	LAKEVIEW RD	HUSTISFORD	4	2	3	8	8	2	7	4	4	0	7	1	50	moderate	NA
GARY L KNIPPER	KAREN A KNIPPER	LAKEVIEW RD	HUSTISFORD	4	1	3	4	8	2	7	7	0	2	7	12	57	moderate	NA
GARY L KNIPPER	KAREN A KNIPPER	N4380 LAKEVIEW RD	HUSTISFORD	4	2	3	4	1	2	7	0	0	1	7	1	32	low	moderate
KHADER A HAMDAN	CARMEN HAMDAN	LAKEVIEW RD	HUSTISFORD	4	2	3	8	8	2	7	4	4	0	7	1	50	moderate	moderate
KHADER A HAMDAN	CARMEN HAMDAN	LAKEVIEW RD	HUSTISFORD	7	1	2	4	4	2	7	0	1	2	7	1	38	low	low
JEROME P CIERNIAK	MARIE E CIERNIAK	295 N RIDGE ST	HUSTISFORD	2	2	3	4	0	2	7	0	0	2	7	1	30	low	moderate
EDWIN M BANCUD		285 N RIDGE ST	HUSTISFORD	4	2	3	4	8	2	7	0	0	2	7	1	40	low	moderate
GARY P TAUBERT	MICHELE M SALAMONE	300 N RIDGE ST	HUSTISFORD	2	2	2	4	0	2	7	4	0	2	4	1	30	low	moderate
KENNETH E WEGENER	RUTH A WEGENER	300 N LAKE ST	HUSTISFORD	4	2	3	8	8	2	7	0	0	2	7	12	55	moderate	NA
MICHAEL S GRANT	PAMELA J GRANT	292 N LAKE ST	HUSTISFORD	0	2	4	1	0	2	7	0	0	2	7	12	37	low	low
STRASSBURG TRUST		284 N LAKE ST	HUSTISFORD	0	2	4	1	0	2	7	0	0	2	7	12	37	low	low
TWIN LAKES DEVELOPMENT	%BERGMAN	NO#LAKEVIEW RD TRLR		4	2	3	4	1	2	0	0	0	1	7	1	25	low	moderate
JOEL S LAMMERS		827 E LAKEVIEW RD	HUSTISFORD	4	2	2	4	1	2	7	4	0	1	7	1	35	low	moderate
KURT A MECUS	TAMARA L MECUS	W4438 E LAKEVIEW RD	HUSTISFORD	7	2	2	4	1	1	7	4	0	2	7	1	38	low	moderate
SCOTT A KINCZFOGEL	PAMELA A KINCZFOGEL	W4436 LAKEVIEW RD	HUSTISFORD	4	2	2	4	1	2	7	0	0	1	7	1	31	low	moderate
THERESA OTTO		W4428 E LAKEVIEW RD	HUSTISFORD	7	2	3	4	1	2	7	0	0	1	7	1	35	low	moderate
HERZLER TRUST		W4410 E LAKEVIEW RD	HUSTISFORD	7	2	2	4	1	2	7	0	0	1	7	1	34	low	moderate
DONALD L MILLER				4	2	3	4	1	2	0	0	0	1	7	1	25	low	moderate
GARY BOVA		737 * E LAKEVIEW RD #12	HUSTISFORD	4	2	3	4	1	2	0	0	0	1	7	1	25	low	moderate
MICHAEL B OLSON	MARY E OLSON	727 * E LAKEVIEW RD #8	HUSTISFORD	7	2	3	4	1	2	0	0	0	2	7	1	29	low	moderate
THANG D PHAM	CHRISTINE M PHAM	717 * E LAKEVIEW RD #8	HUSTISFORD	4	2	3	4	1	2	0	0	0	1	7	1	25	low	moderate
BRIAN P DOWNEY	LINDA M DOWNEY	537 W JUNEAU ST	HUSTISFORD	2	2	2	4	0	2	7	4	4	1	4	1	33	low	moderate
DWAYNE W SCOTT	MARYANN SCOTT	507 W JUNEAU ST	HUSTISFORD	2	2	2	4	0	2	7	0	0	2	7	1	29	low	moderate
CLAYTON FALKENTHAL	O SHEILA J FALKENTHAL	497 W JUNEAU ST	HUSTISFORD	4	2	2	4	1	2	7	0	0	2	7	1	32	low	moderate
DUANE M BELLOWS	CHARLENE J BELLOWS	485 W JUNEAU ST	HUSTISFORD	4	2	2	4	1	2	7	0	0	2	7	1	32	low	moderate
ROBERT ACHTERBERG	E MARTHA A ACHTERBERG	475 W JUNEAU ST	HUSTISFORD	4	2	2	4	8	2	7	0	0	2	7	1	39	low	moderate
RANDY J NEIMAN	MELISSA R FABER	123 E TWEEDY ST	HUSTISFORD	0	2	4	1	0	2	7	0	0	2	7	12	37	low	low
PATRICK G NAYLOR		127 E TWEEDY ST	HUSTISFORD	0	2	4	1	0	2	7	4	0	2	7	12	41	low	low
ERWIN SCHOENIKE	GERTRUDE SCHOENIKE	226 N LAKE ST	HUSTISFORD	0	2	4	1	0	2	7	0	0	2	7	12	37	low	low
JEFFREY A HODORSKI	SARA A STRASSBURG	234 N LAKE ST	HUSTISFORD	0	2	3	1	0	2	7	0	0	2	7	12	36	low	low
J SCOTT TODD		244 N LAKE ST	HUSTISFORD	0	2	3	1	0	2	7	0	0	2	7	12	36	low	low

WNER 1	OWNER 2	Property Address	Property City	MFS	D20S	D100S	SGS	SOS	BHS	BCS	BVS	BSS	ASS	AVS	BWS	EIS	EIS_CAT	SWH_CAT
HERBERT NEUENSCHWANDER E		250 N LAKE ST	HUSTISFORD	0	2	4	1	0	2	7	0	0	2	7	12	37	low	low
STRASSBURG TRUST		276 N LAKE ST	HUSTISFORD	0	2	4	1	0	2	0	0	0	2	7	12	30	low	low
BARBARA A WITTNABEL		268 N LAKE ST	HUSTISFORD	0	2	4	1	0	1	7	0	0	2	7	12	36	low	low
BETHANY EV LUTH CONG		260 N LAKE ST	HUSTISFORD	0	2	4	1	0	2	0	0	0	2	7	12	30	low	low
MARY E ACHTERBERG		415 W JUNEAU ST	HUSTISFORD	7	2	2	4	8	2	7	0	0	2	7	1	42	low	moderate
MARJORIE RYDER		427 W JUNEAU ST	HUSTISFORD	2	2	2	4	0	2	7	0	0	2	7	1	29	low	moderate
RICHARD W BURCH	MARY E BURCH	439 W JUNEAU ST	HUSTISFORD	2	2	2	4	0	2	7	4	0	2	7	1	33	low	moderate
LOUIS R LINSMEYER	CORINNE G LINSMEYER	451 W JUNEAU ST	HUSTISFORD	2	2	2	4	0	2	7	0	0	2	7	1	29	low	moderate
HUNDT TRUST		459 W JUNEAU ST	HUSTISFORD	2	2	2	4	0	2	7	0	0	2	7	1	29	low	moderate
CAMPERS INCORPORATED		NO#N HUSTIS ST SHED		2	1	2	1	4	2	7	1	4	0	1	1	26	low	moderate
IONA A LANGENECKER		337 + W TWEEDY ST	HUSTISFORD	2	2	2	4	0	2	0	0	0	2	7	1	22	low	moderate
IONA A LANGENECKER		337 + W TWEEDY ST	HUSTISFORD	2	2	2	4	0	2	0	0	0	2	7	1	22	low	moderate
RUE S LEITZKE	VICKIE M LEITZKE	325 W TWEEDY ST	HUSTISFORD	2	2	2	4	0	2	7	0	0	2	7	1	29	low	moderate
BETTY LEITZKE TRUST		225 N HIGHLAND ST	HUSTISFORD	2	2	2	4	0	2	7	0	0	2	7	1	29	low	moderate
BETTY LEITZKE TRUST		221 N HIGHLAND ST	HUSTISFORD	2	2	2	4	0	2	7	0	0	2	7	1	29	low	moderate
BETTY LEITZKE TRUST				4	2	3	8	1	2	7	4	4	0	7	6	48	moderate	moderate
VIRGINIA ERDMAN	GERDA KIEFER	NO#N RIDGE ST SHED		7	2	2	4	8	2	7	0	0	1	7	1	41	low	moderate
VIRGINIA ERDMAN	GERDA KIEFER	267 N RIDGE ST	HUSTISFORD	4	2	3	4	8	2	7	0	0	1	7	1	39	low	moderate
MERLIN H HANDEL	CYNTHIA S KUNZ	277 N RIDGE ST	HUSTISFORD	4	2	3	4	8	2	7	0	0	2	7	1	40	low	moderate
				4	2	3	8	1	3	7	1	0	2	7	1	39	low	moderate
				4	2	3	8	4	2	0	0	0	2	7	1	33	low	low
				4	2	3	4	4	2	7	4	0	0	4	1	35	low	low