

Sections 26, 27, 34, 35  
Alden Township  
in Polk County

Sections 2 and 3  
Star Prairie Township  
in St. Croix County

# CEDAR LAKE

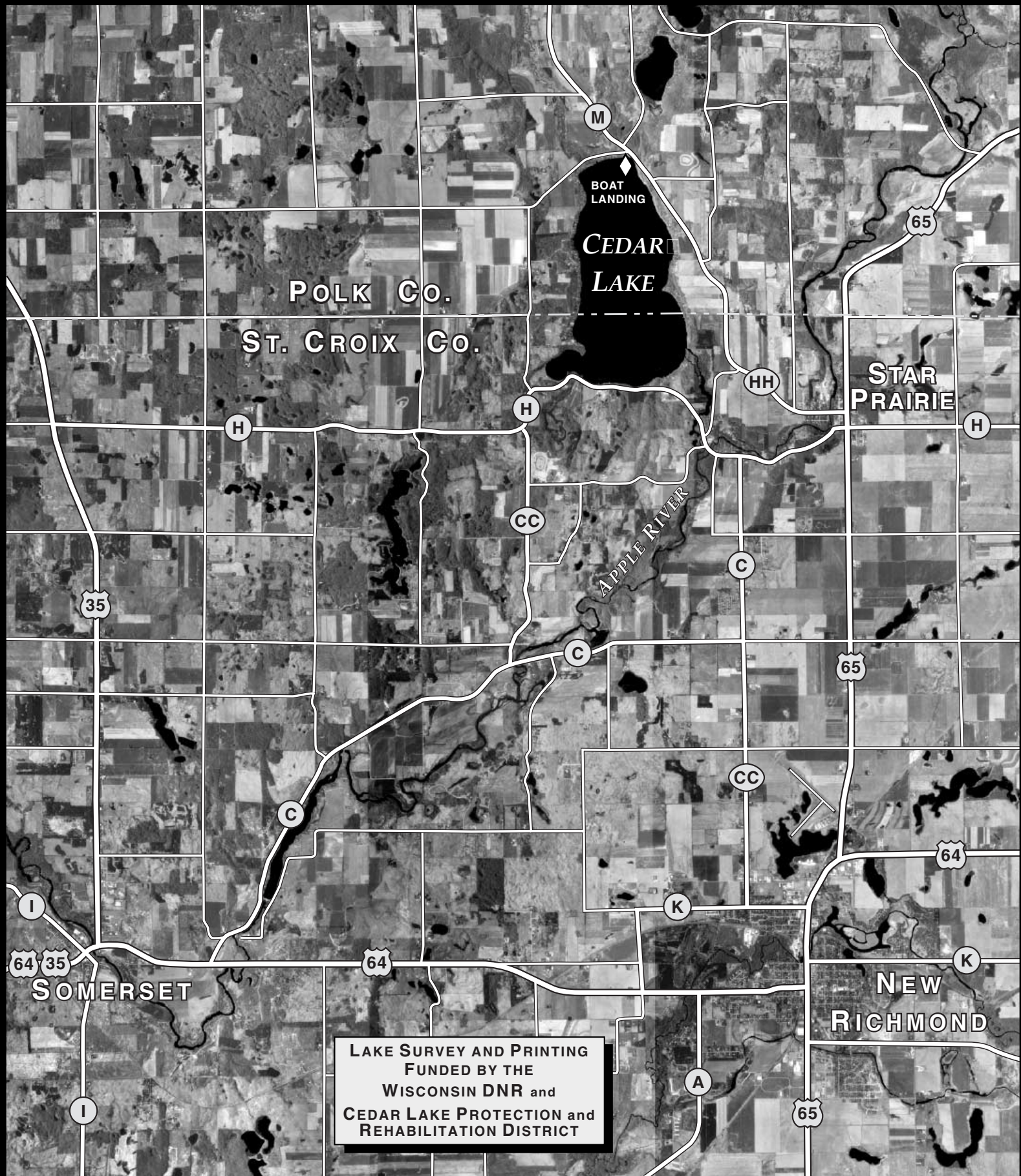
## BATHYMETRIC MAP

1998 Survey Integrating Sonar with GPS

SEAN HARTNETT • GEOGRAPHER  
UNIVERSITY OF WISCONSIN - EAU CLAIRE

AREA 1,117.6 Acres  
Under 5 Feet 189.0 Acres  
Over 20 Feet 675.9 Acres

VOLUME 20,448.1 Acre Feet  
MAXIMUM DEPTH 34 Feet  
SHORELINE 6.46 Miles



LAKE SURVEY AND PRINTING  
FUNDED BY THE  
WISCONSIN DNR and  
CEDAR LAKE PROTECTION and  
REHABILITATION DISTRICT

# CEDAR LAKE

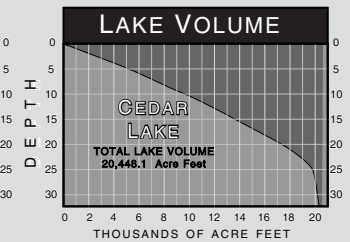
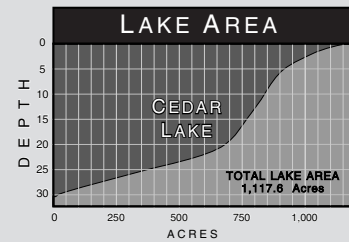
Sections 26, 27, 34, 35  
Alden Township  
in Polk County

Sections 2 and 3  
Star Prairie Township  
in St. Croix County

## BATHYMETRIC MAP

1998 Survey Integrating Sonar with GPS  
SEAN HARTNETT • GEOGRAPHER  
UNIVERSITY OF WISCONSIN - EAU CLAIRE  
LAKE SURVEY AND PRINTING FUNDED BY  
WISCONSIN DNR and  
CEDAR LAKE PROTECTION AND  
REHABILITATION DISTRICT

AREA 1,117.6 Acres  
Under 5 Feet 189.0 Acres  
Over 20 Feet 675.9 Acres  
VOLUME 20,448.1 Acre Feet  
MAXIMUM DEPTH 34 Feet  
SHORELINE 6.46 Miles



⊥	EMERGENT VEGETATION
T	SUBMERGENT VEGETATION
⊃	FLOATING VEGETATION
⊂	FISH CRIBS
◀	BOAT ACCESS WITH PARKING
⊛	ROCKS OR NAVIGATION HAZARD
	LAKE BOTTOM
Sd	Sand
Mk	Muck
Gr	Gravel
St	Silt
R	Rubble

SPECIES OF FISH	COMMON	PRESENT
MUSKIE	X	
WALLEYE	X	
LARGEMOUTH		X
NORTHERN PIKE		X
WHITE BASS	X	
PANFISH		X

Sections 26, 27, 34, 35  
Alden Township  
in Polk County

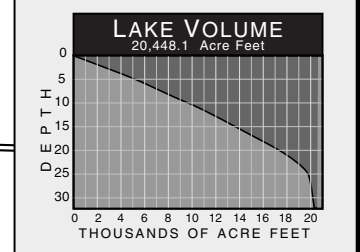
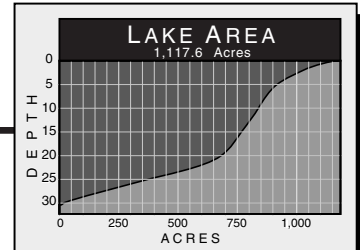
**CEDAR LAKE  
BATHYMETRIC MAP**

1998 Survey Integrating Sonar with GPS  
SEAN HARTNETT - GEOGRAPHER  
UNIVERSITY OF WISCONSIN - EAU CLAIRE

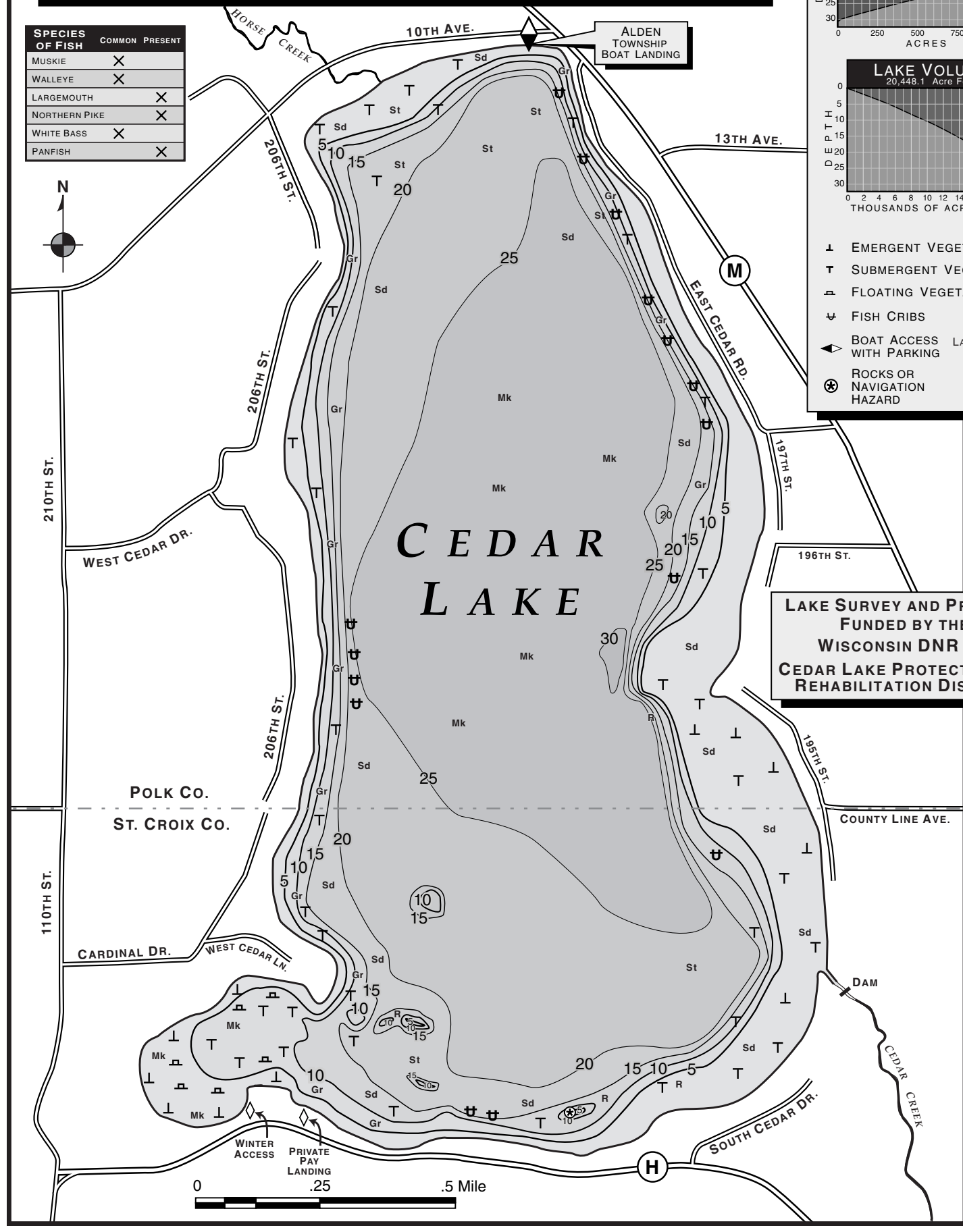
AREA 1,117.6 Acres  
Under 5 Feet 189.0 Acres  
Over 20 Feet 675.9 Acres

VOLUME 20,448.1 Acre Feet  
MAXIMUM DEPTH 34 Feet  
SHORELINE 6.46 Miles

SPECIES OF FISH	COMMON PRESENT
MUSKIE	X
WALLEYE	X
LARGEMOUTH	X
NORTHERN PIKE	X
WHITE BASS	X
PANFISH	X



- ↓ EMERGENT VEGETATION
- ↑ SUBMERGENT VEGETATION
- △ FLOATING VEGETATION
- ⊕ FISH CRIBS
- ◀ BOAT ACCESS WITH PARKING
- ⊙ ROCKS OR NAVIGATION HAZARD
- LAKE BOTTOM
  - Sd Sand
  - Mk Muck
  - Gr Gravel
  - St Silt
  - R Rubble



LAKE SURVEY AND PRINTING  
FUNDED BY THE  
WISCONSIN DNR and  
CEDAR LAKE PROTECTION and  
REHABILITATION DISTRICT