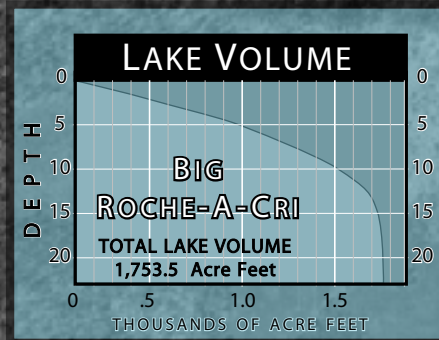


BIG ROCHE-A-CRI
 Township 18 North
 Range 6 East
 Sections 4, 5 and 6
 Preston Township
 Adams County

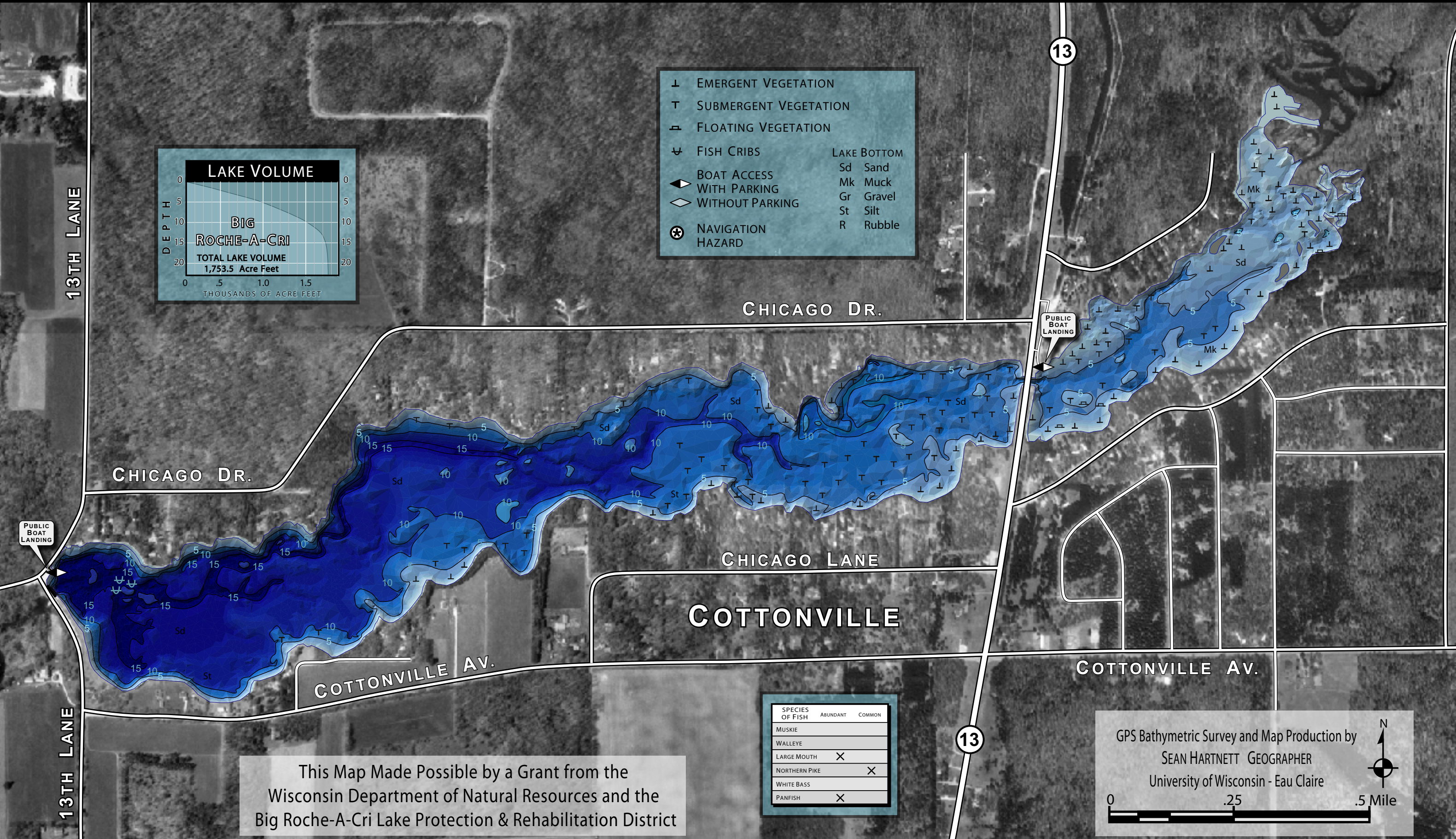
AREA 218.2 Acres
 220.5 Acres with Islands
 Under 3 Feet 33.3 Acres 15.3%
 Over 20 Feet 0 Acres 0%
 VOLUME 1,753.5 Acre Feet
 SHORELINE 5.79 Miles
 MAXIMUM DEPTH 20 Feet

BIG ROCHE-A-CRI

BATHYMETRIC MAP
 with Five Foot Depth Contours
 Measured From Full Pool Elevation 94.4
 GPS Lake Survey Summer, 2001



⊥	EMERGENT VEGETATION		
T	SUBMERGENT VEGETATION		
⊃	FLOATING VEGETATION		
⊂	FISH CRIBS		
◀	BOAT ACCESS WITH PARKING	LAKE BOTTOM	Sd Sand
◇	BOAT ACCESS WITHOUT PARKING		Mk Muck
⊛	NAVIGATION HAZARD		Gr Gravel
			St Silt
			R Rubble



SPECIES OF FISH	ABUNDANT	COMMON
MUSKIE		
WALLEYE		
LARGE MOUTH	X	
NORTHERN PIKE		X
WHITE BASS		
PANFISH	X	

This Map Made Possible by a Grant from the Wisconsin Department of Natural Resources and the Big Roche-A-Cri Lake Protection & Rehabilitation District

GPS Bathymetric Survey and Map Production by
 SEAN HARTNETT GEOGRAPHER
 University of Wisconsin - Eau Claire