

Siskiwit Falls Project

An Opportunity to Protect 95 acres for
wildlife, plants, water & public access



Bayfield Regional Conservancy

Protecting natural lands, waters, forests, farms and places of scenic, spiritual and historic value in Northwest Wisconsin

www.brcland.org

Bayfield Regional Conservancy

- Membership based local non-profit
- Serves 4 counties
- Works to conserve land:
 - Conservation easements
 - Acquisition of lands
- Private landowners are key



Bayfield Regional Conservancy

Conservation Easement

- Legal, perpetual agreement
- Protects public conservation values by limiting uses
- Outlines restrictions & uses
- Public or private land
- Annual monitoring



Bayfield Regional Conservancy

Acquisition Projects

- Special places, private ownership
- Grants = Public access while protecting natural resources
- We typically convey properties to local govt & help steward

Nourse & Jolly: Sugar Bush (Bayfield County)

Grant: Houghton Falls (Bayview)

Johnson: Frog Bay (Red Cliff Tribe)

Olson, Nelson & Peterson: Big Ravine (Bayfield)

Martens: Siskiwit Beach & Wetlands (Bell)



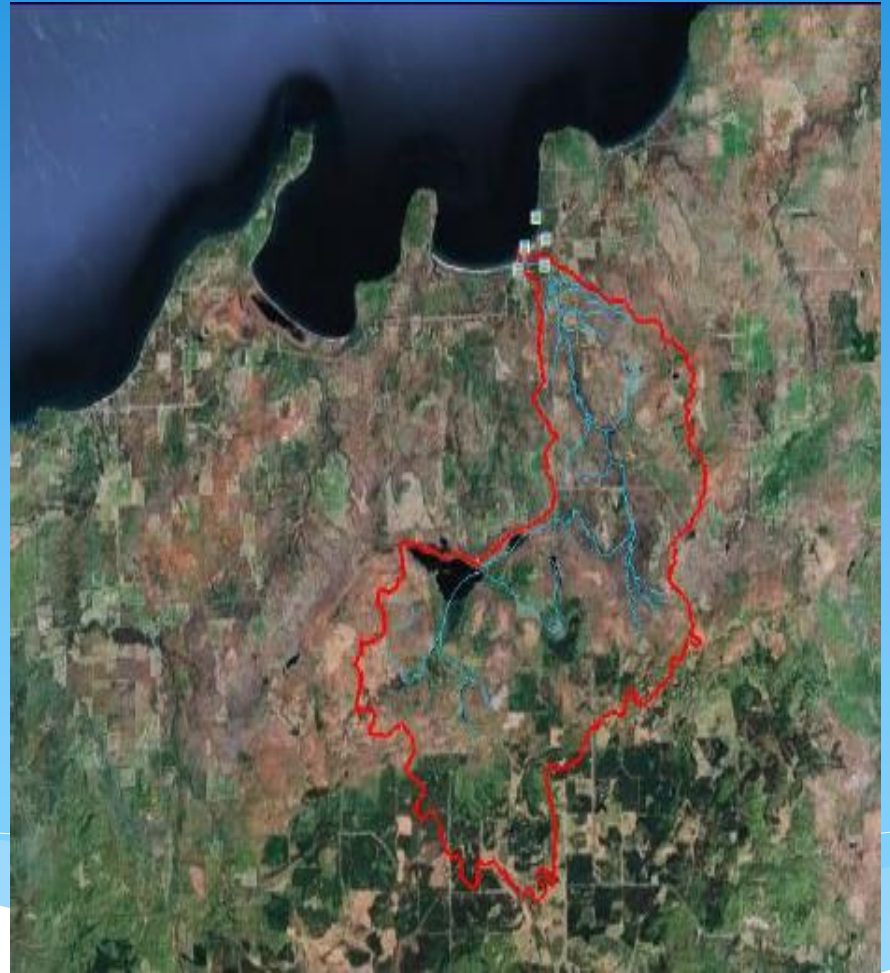
Siskiwit Falls Project

An Opportunity to Protect the 92 acre
Swenson property



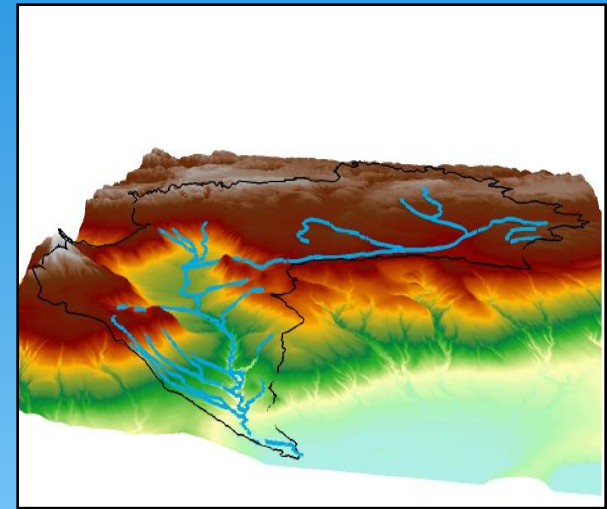
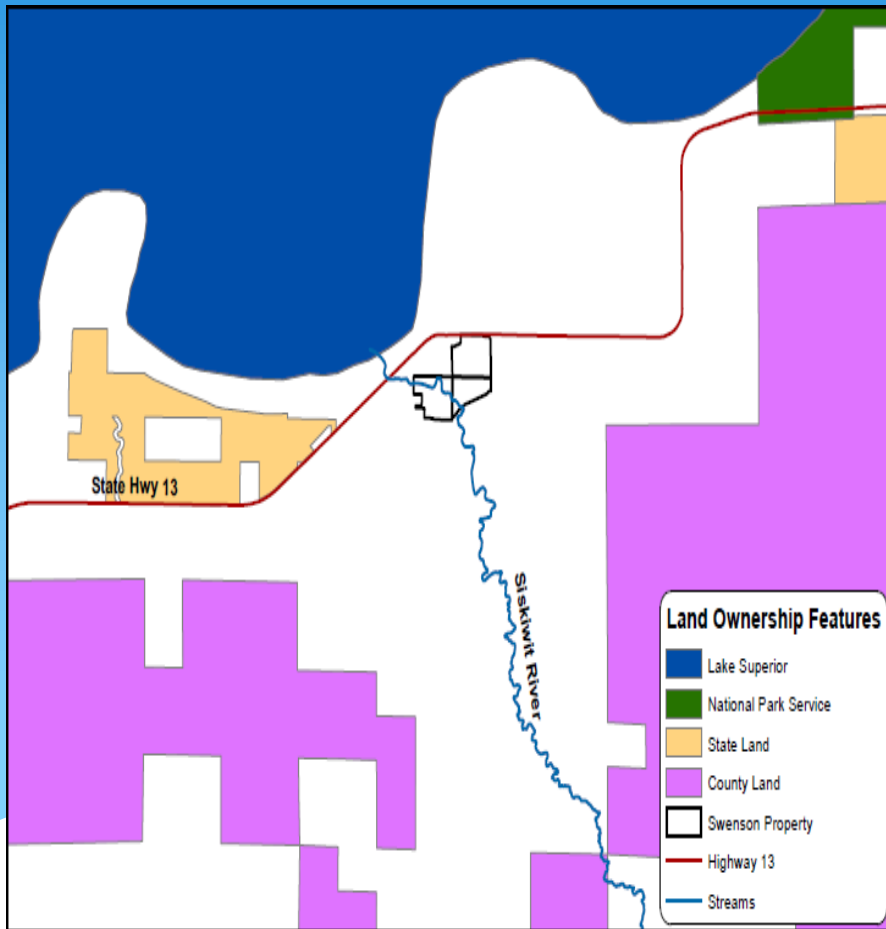
Siskiwit River Watershed

- Covers 26 square miles
- Forested landscape (previously cut-over)
- Class II trout stream
- Coastal estuary along Lake Superior
- Waterfalls

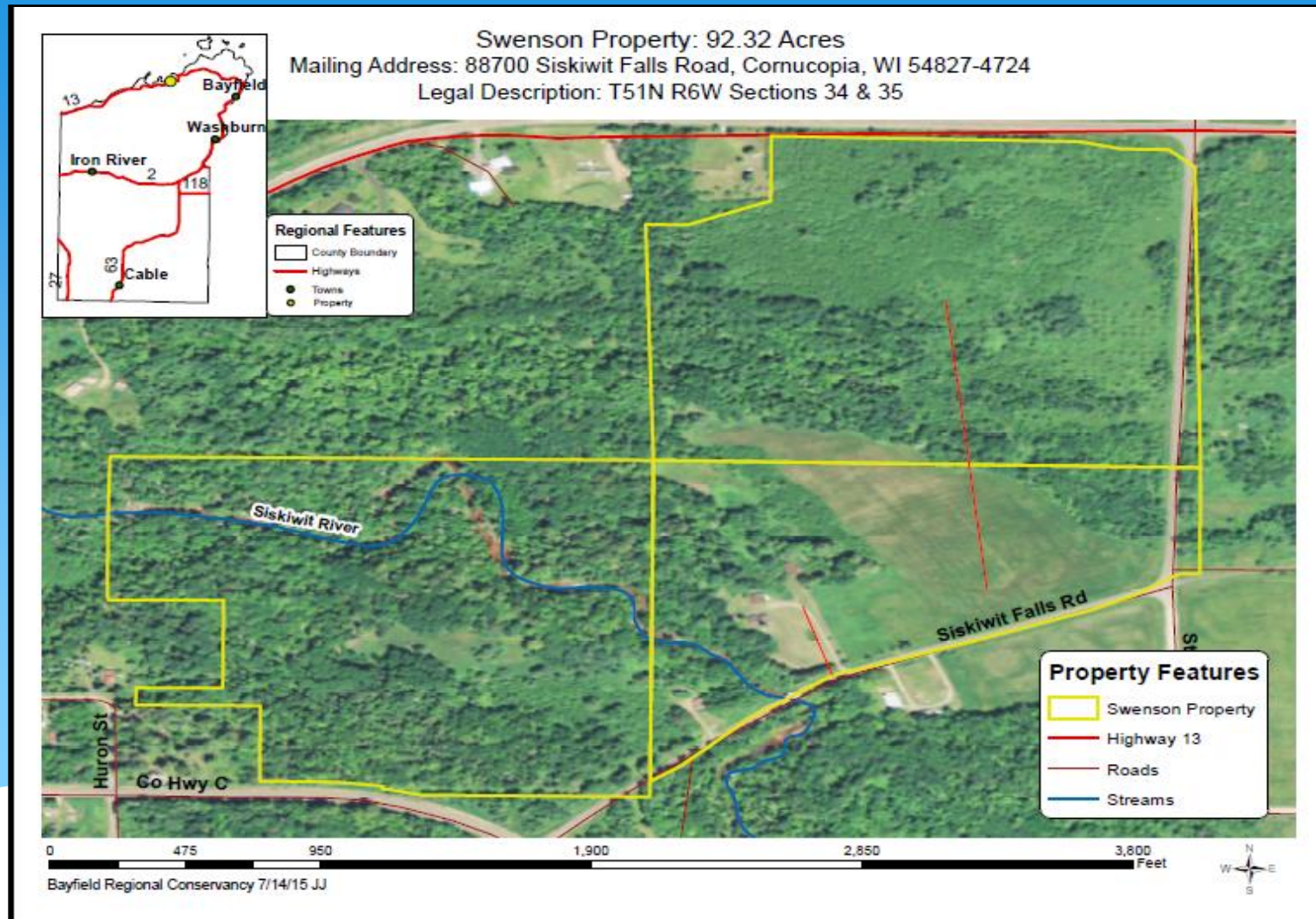


Siskiwit River Watershed

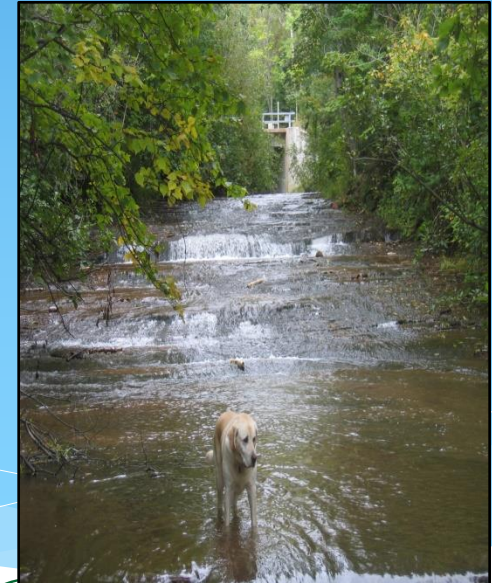
Challenges & Role of Landowners



Swenson Property & Goals

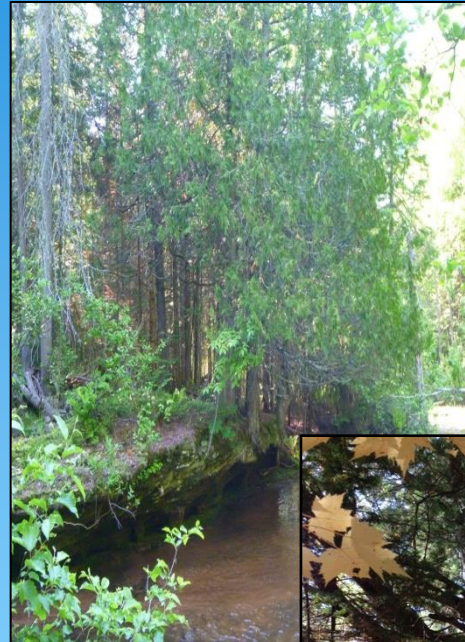


Swenson Legacy



Property Overview

- Boreal forest
- Diverse habitats
- Wetlands/orchard
- River & ravines
- Waterfalls
- Proximity to town
- Well-loved



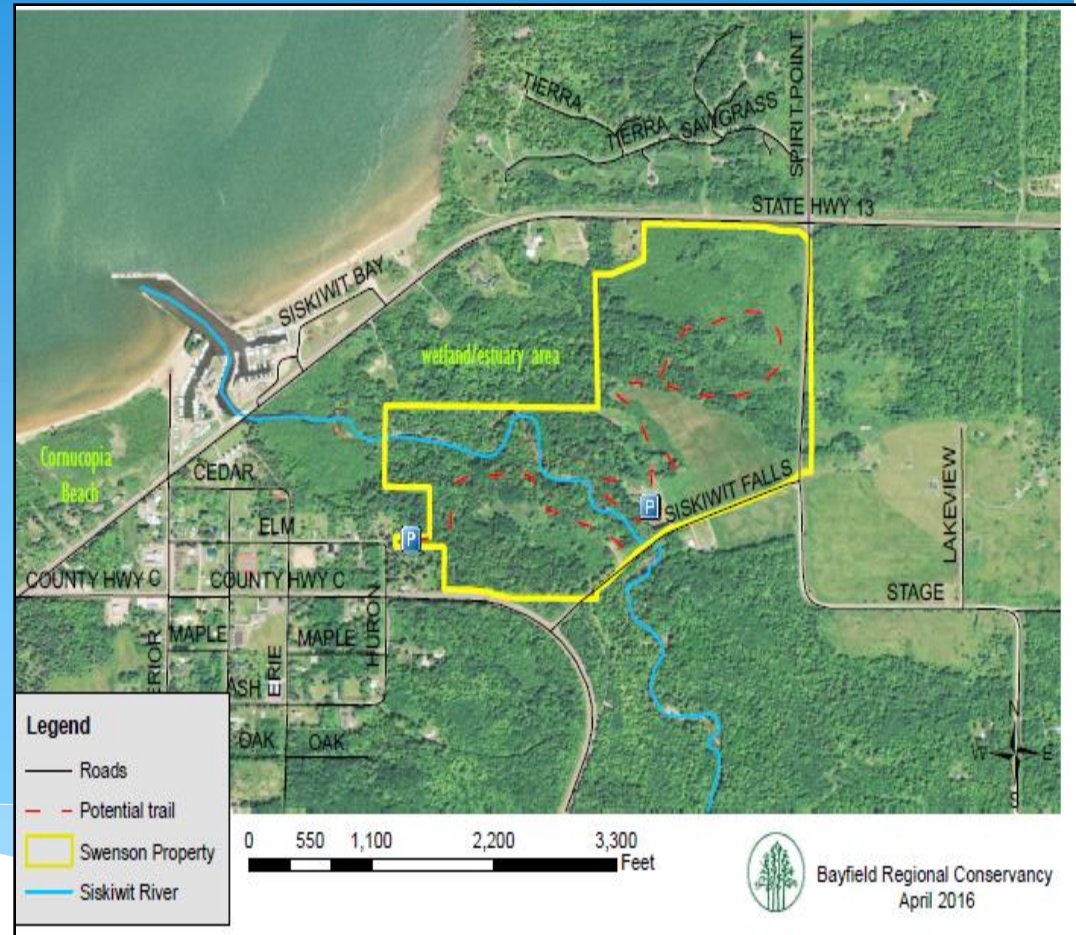
Project Proposal

- Landowner wishes:
 - Protection & public access
 - Local ownership by town
 - Conservation easement with Conservancy
- Grants to fund acquisition (Aug, Oct, Nov)
- Expected transfer of ownership to Town (end of 2017)
- Stewardship fundraising:
 - Donations from landowner and others?
 - Grants



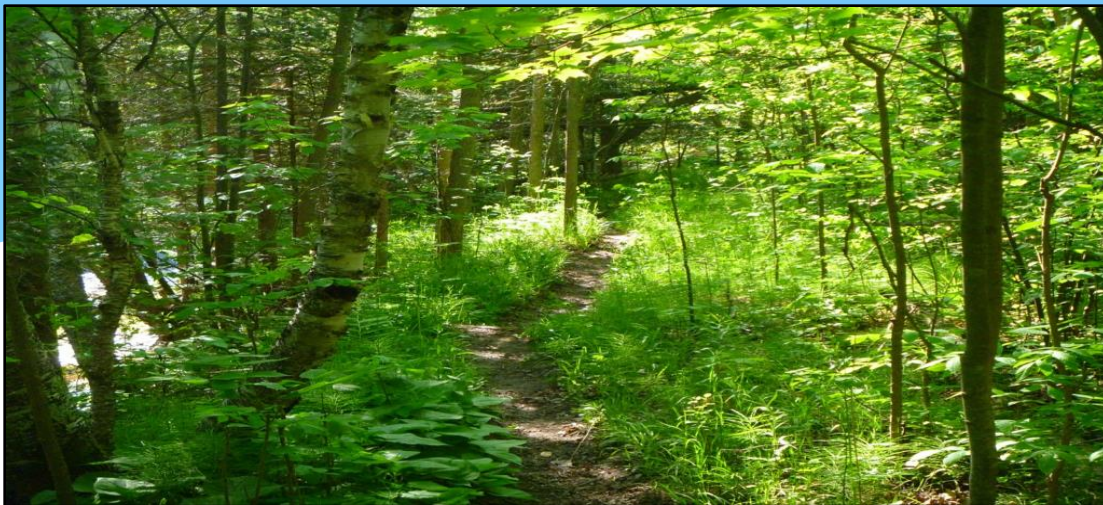
Management Considerations

- 5 required uses: hiking, cross-country skiing, hunting, fishing, trapping
- No motorized use
Reforestation may be needed & invasives
- Infrastructure okay if conservation values protected



Request to Town of Bell

- Is this project proposal consistent with what the community wants?
- Is the Town of Bell willing to write a letter of support regarding ownership? No financial commitment now
- Is the Town willing to work with Conservancy on long-term stewardship?



Contact information:
Erika Lang
erika@brcland.org
715.779.5263



www.brcland.org