

CARPC & WDNR

Water Quality Planning

Dane County

Meet & Greet 2018
May 30th 2018



Welcome

Management

& Staff



Stricker's Pond, Middleton

Agenda

- 9:00 to 9:15 Open – greetings
- 9:15 to 9:45 Introductions
- 9:45 to 10:00 CARPC/DNR
 - History of cooperative partnership
 - Historic and recent accomplishments
- 10:00 to 10:30 CARPC Initiatives
- 10:30 to 11:00 State planning Initiatives
- 11:00 to 11:30 Priorities for FY19 WQ Planning Contract
 - Invitation to ideas - round robin
- 11: 30 – Adjourn



Round Robin Introductions & Role in Programs

CARPC



Stephen Steinhoff
Deputy & Division Director
Community and Regional
Development Planning



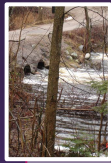
Mike Rupiper
Division Director
Environmental Resource
Planning



Tony Vandermuss
Environmental Engineer



Sarah Fuller
Environmental Planner



Danica Derks
GIS Specialist



Yoon Bin Bae
Water Quality Intern

DNR Central Office



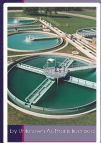
Sharon Gayan,
Director WQ Bureau



Tim Asplund
Monitoring
Section Chief



Andrew Simek
DNR Attorney



Jason Knutson
Wastewater
Section Chief



Ryan Raab
Business Services/IT
Section Chief



Ruth Person
Grant Coordinator



Andrew Dutcher
Facility Plan Engineer



Lisa Helmuth
WQM Plan Coordinator

DNR Field Management & Staff



Mark Aquino
Secretary's Director



J.D. Smith
Field Integration Leader



Greg Searle, Field
Operations Supervisor
Water Resources



Tim Ryan
Wastewater Supervisor



Mike Sorge
Water Resources
Supervisor



James Amrhein
WQ Biologist



Eric Rortvedt
Stormwater



Wendy Peich
Wetlands



Amy Garbe
Wastewater



Mark Riedel
TMDL Coordinator

1932 Oscar Meyer,
N. Madison



Image ID: 35088
Creation Date: 1932
Creator Name: Vinje, Arthur M., 1888-1972
City: Madison
County: Dane
State: Wisconsin
Collection Name: Vinje, Arthur M. : Photographs and Negatives

Aerial view of the Oscar Meyer meat packing plant,
looking north, with the surrounding rural country



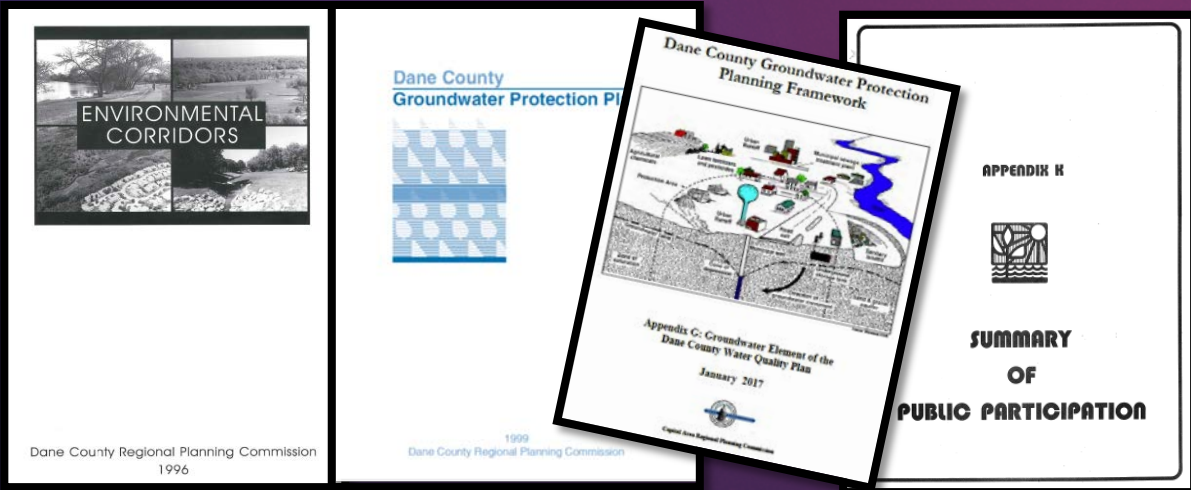
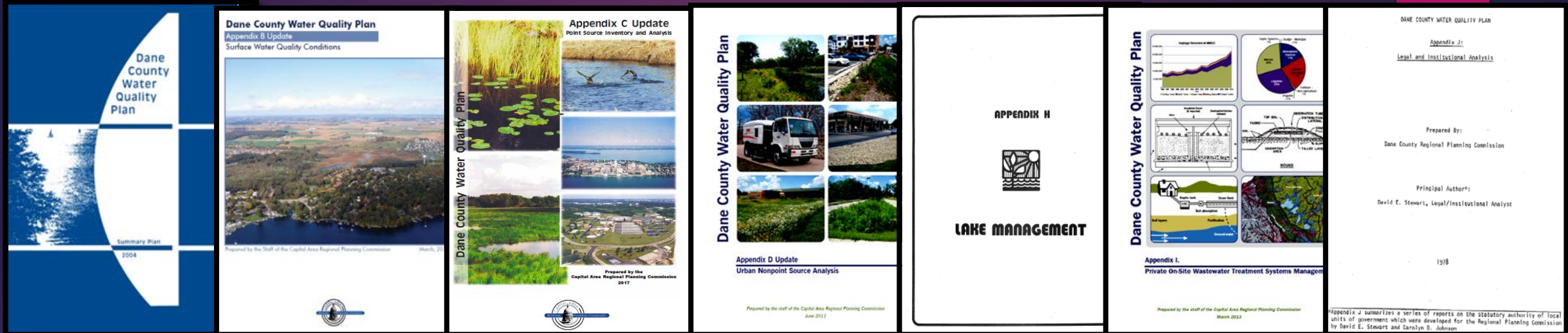
2015 Oscar Meyer,
N. Madison

Historic and recent accomplishments

- **Dane County Regional Planning one of three designated agencies.**
 - 1975 USEPA - legal designation of planning area and agency.
 - Partner with DNR on program development and implementation.
 - Initial work –WWTP primary treatment coverage.
 - SSA Plan creation and management.
- **Resource reports & SSA planning.**
- **Science-based principles of WQ protection and management constant over time, throughout agency change.**
- **WGNHS & USGS Hydrologic Groundwater Model.**
- **Watershed-wide studies Token Creek, Verona.**
- **Application of fish assemblage impact models from Science Services to planning.**
- **Fitchburg Legal Action**
 - Northeast Neighborhood
 - Stormwater Monitoring
 - Waubesa Wetland Workgroup
 - Groundwater Quantity and Quality Awareness
- **Statutory changes (2015)**
 - Process changes
 - 90-day review period (max)
 - Guidance development
 - CARPC & DNR process updates

Dane County Plan Elements

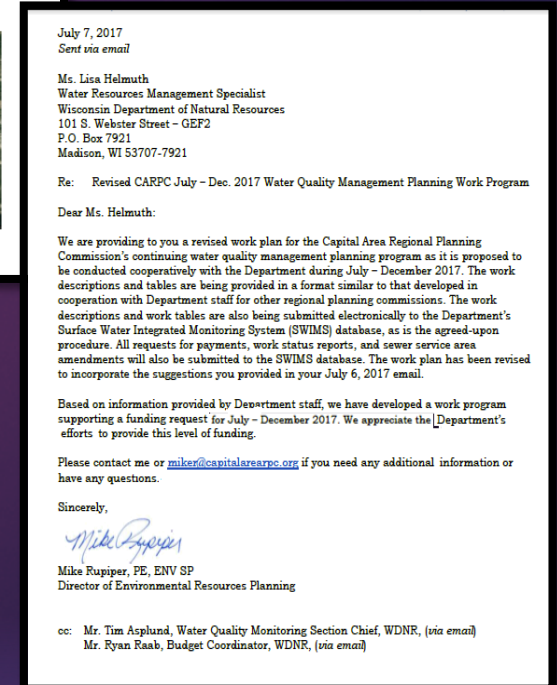
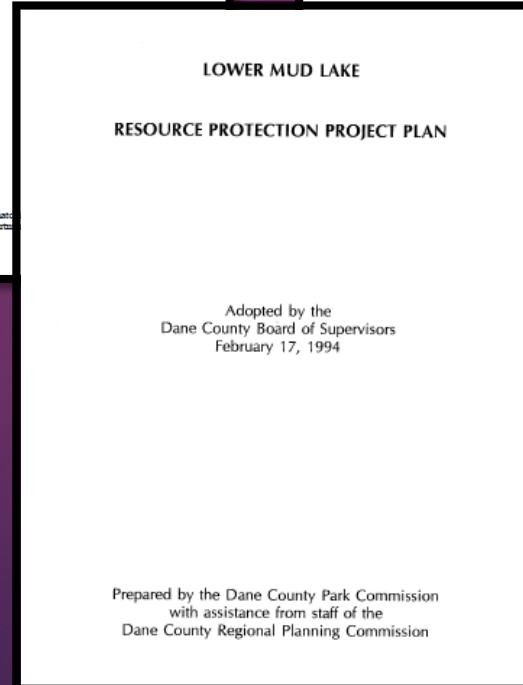
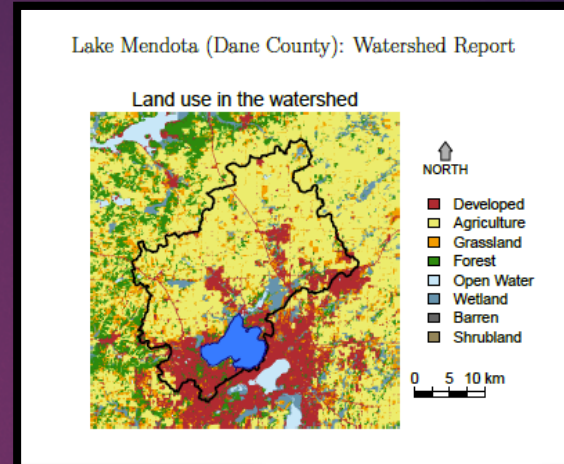
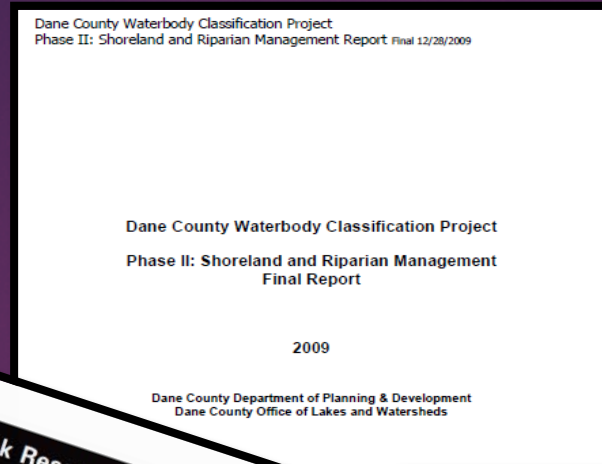
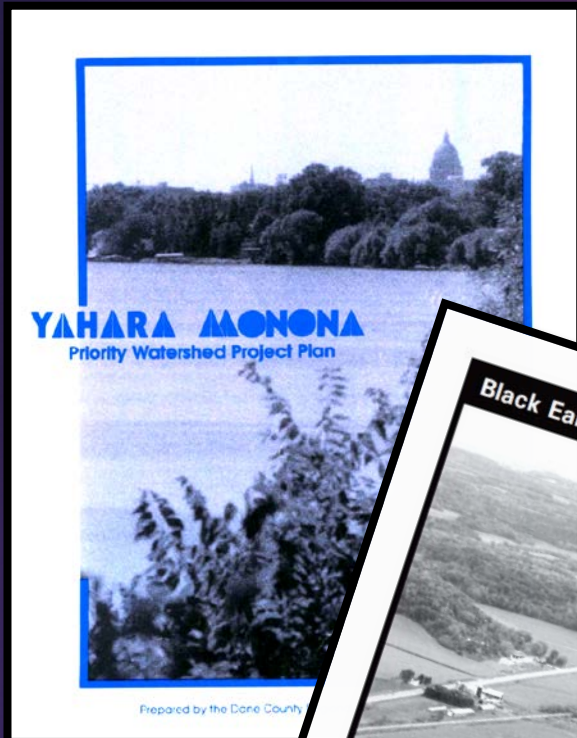
Resource inventories in Dane County



Dane County Water Quality Management Plan (2004)

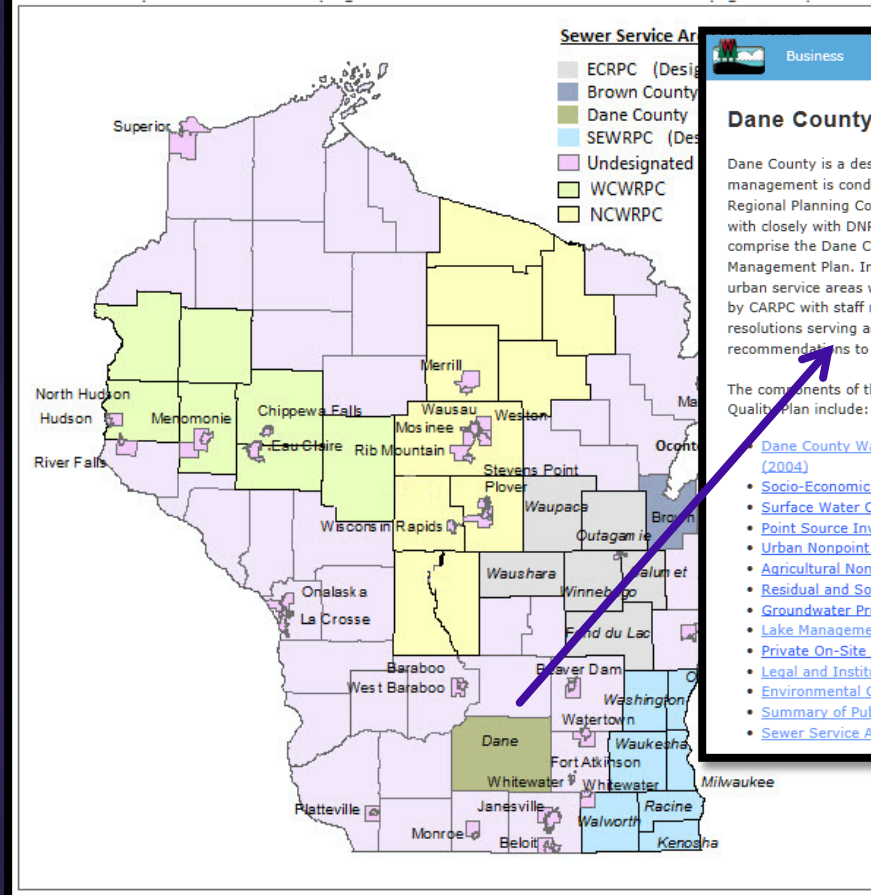
- Environmental Corridors (1996)
- Appendix A: Socio-Economic Profile (1979, 2010)
- Appendix B: Surface Water Quality Conditions (2012)
- Appendix C: Point Source Inventory and Analysis (2017)
- Appendix D: Urban Nonpoint Source Analysis (2011)
- Appendix E: Environmental Corridors (1996)
- Appendix F : Residual and Solid Waste Disposal (1988)
- Appendix G: Groundwater Protection Planning Framework (1999, 2017)
- Appendix H: Summary of Public Participation
- Appendix I: Private On-Site Wastewater Treatment Systems (2013)
- Appendix J: Legal and Institutional Analysis (1978)
- Appendix K: Summary of Public Participation (1979)

Water Quality Planning Documents



Sewer Service Area Planning - Dane County

Sewer Service Area Planning Map - Click to View Plans



Dane County WQM Plan

Dane County is a designated planning area and its management is conducted by the Capital Area Regional Planning Commission (CARPC), which works with closely with DNR. The following elements comprise the Dane County Water Quality Management Plan. In addition to these elements, the urban service areas within Dane County are managed by CARPC with staff reports and Commission resolutions serving as technical and local recommendations to the DNR.

The components of the complete Dane County Water Quality Plan include:

- [Dane County Water Quality Plan Summary \(2004\)](#)
- [Socio-Economic Profile \(1979\) - Appendix A, Updated in 2010](#)
- [Surface Water Conditions \(2014\) Appendix B](#)
- [Point Source Inventory and Analysis \(2004\) Appendix C Updated in 2017](#)
- [Urban Nonpoint Source Analysis \(2011\) Appendix D](#)
- [Agricultural Nonpoint Source Analysis \(1988\) Appendix E](#)
- [Residual and Solid Waste Disposal \(1988\) Appendix F](#)
- [Groundwater Protection Planning Framework \(1999\) Appendix G Updated in 2017](#)
- [Lake Management \(1979\)](#)
- [Private On-Site Waste Water Treatment Systems Management \(2013\) Appendix H](#)
- [Legal and Institutional Analysis \(1978\)](#)
- [Environmental Corridors Report \(1996\)](#)
- [Summary of Public Participation \(1979\)](#)
- [Sewer Service Area Plan Amendments \(up through 2016\)](#)

Contracts and projects

- [Dane County WQM Plan Contracts & Products](#)
- [Dane County WQM Plan FY17](#)
- [Dane County WQM Plan FY16](#)
- [Dane County WQM Plan FY15](#)
- [Dane County WQM Plan FY14](#)
- [Dane County WQM Plan FY13](#)
- [Dane County WQM Plan FY12](#)
- [Dane County WQM Plan FY11](#)
- [Dane County WQM Plan FY10](#)
- [Dane County WQM Plan FY09](#)
- [Dane County WQM Plan FY08](#)
- [Dane County WQM Plan FY07](#)
- [Dane County WQM Plan FY06](#)
- [Dane County WQM Plan FY05](#)
- [Dane County WQM Plan FY04](#)
- [Dane County WQM Plan FY03](#)
- [Dane County WQM Plan FY94-FY02](#)

Plan Amendment Procedures (CARPC Website)

- [Areawide Water Quality Management Planning in Dane County](#)
- [Service Area Amendment Flow Chart](#)
- [Service Area Amendment Application Packet](#)

Dane County Urban Service Areas

- [Albion USA/SSA Plan](#)
- [Belleville USA/SSA Plan](#)
- [Black Earth USA/SSA Plan](#)
- [Blue Mounds USA/SSA Plan](#)
- [Brooklyn USA/SSA Plan](#)
- [Cambridge USA/SSA Plan](#)
- [Central USA/SSA Plan](#)
- [Cottage Grove USA/SSA Plan](#)
- [Cross Plains USA/SSA Plan](#)
- [Dane USA/SSA Plan](#)
- [Deerfield USA/SSA Plan](#)
- [Edgerton USA/SSA Plan](#)
- [Fitchburg NE Neighborhood Amendment 2015](#)
- [Fox Bluff USA/SSA Plan](#)
- [Lake Kegonsa USA/SSA Plan](#)
- [Lake Koshkonong USA/SSA Plan](#)
- [Marshall USA/SSA Plan](#)
- [Mazomanie USA/SSA Plan](#)
- [Morrisonville USA/SSA Plan](#)
- [Mount Horeb USA/SSA Plan](#)
- [Northern USA/SSA Plan](#)
- [Oregon USA/SSA Plan](#)
- [River Road USA/SSA Plan](#)
- [Rockdale USA/SSA Plan](#)
- [Rodefald USA/SSA Plan](#)
- [Roxbury USA/SSA Plan](#)
- [Stoughton USA/SSA Plan](#)
- [Sun Prairie USA/SSA Plan](#)
- [Thompson USA/SSA Plan](#)
- [Verona USA/SSA Plan](#)
- [Waubesa USA/SSA Plan](#)
- [Waunakee USA/SSA Plan](#)
- [Westport USA/SSA Plan](#)
- [Windsor Prairie USA/SSA Plan](#)
- [Wisconsin Heights USA/SSA Plan](#)

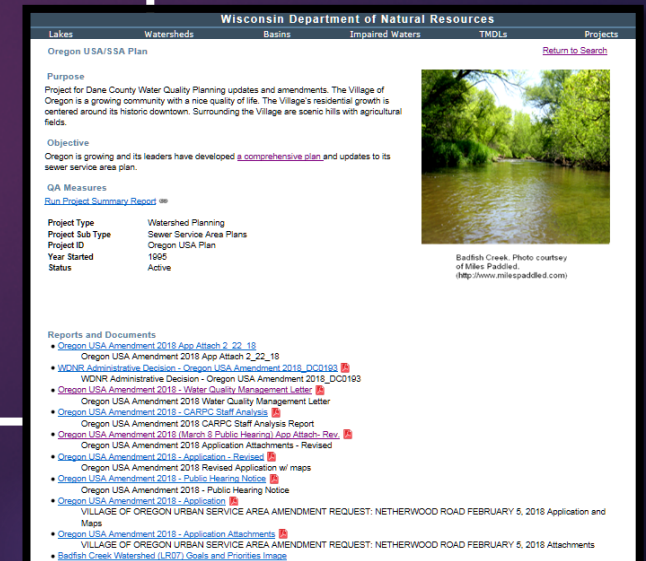
Approximately \$80K / year
Streamlined process
Enhanced Online presence

Partnership review efficiency - .25 FTE

[1 FTE, .5 LTE]

- Work cooperatively to update online process steps for customers.
- SWIMS postings of amendment requests, contracts → automate public access, USEPA reporting, list of pending requests.
- Statewide quality improvement review of WQ / SSA Plan Program with contract agencies →
 - Quality improvements such as this meeting!

- Obtain and share environmental corridors and USA boundaries online for review with DNR layers.
- Resource reviews with Clean Water Act assessments and TWA datasets.
- Request CARPC help with data entry and use of SWIMS, WATERS, SWAMP, and Online GIS tools: consistent assessments.
- Use monitoring datasets from SWIMS and related online tools.
- WQ Planning handbook for staff, Guidance for overall program



The screenshot displays the 'Oregon USA/SSA Plan' project page on the Wisconsin Department of Natural Resources website. The page includes a navigation bar with tabs for 'Lakes', 'Watersheds', 'Basins', 'Impaired Waters', 'TMDLs', and 'Projects'. The main content area features a 'Purpose' section describing the project for Dane County Water Quality Planning updates, an 'Objective' section stating the goal of a comprehensive plan, and a 'QA Measures' section with a link to 'Run Project Summary Report'. A table lists project details: Project Type (Watershed Planning), Project Sub Type (Sewer Service Area Plans), Project ID (Oregon USA Plan), Year Started (1996), and Status (Active). A photograph of Badfish Creek is shown with a caption: 'Badfish Creek. Photo courtesy of Miles Paddled. (http://www.milespaddled.com)'. A 'Reports and Documents' section lists various reports and administrative decisions related to the project.

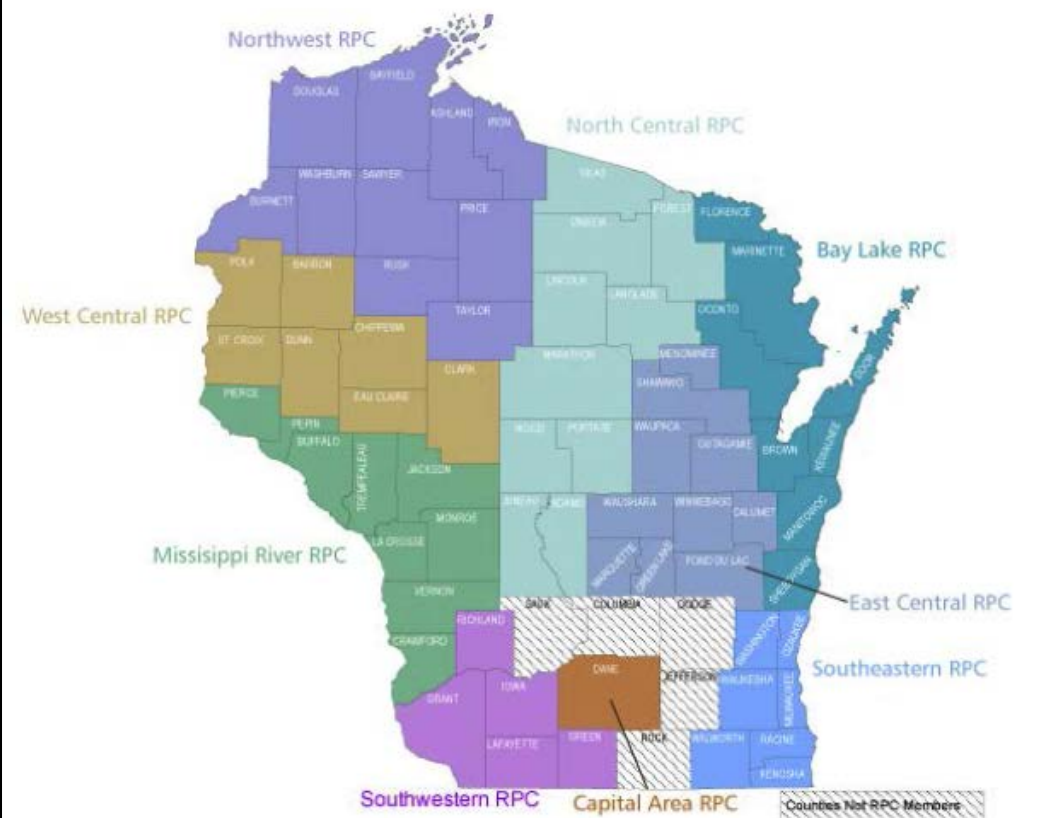
Current Initiatives

Environmental Resources / Water Quality Planning

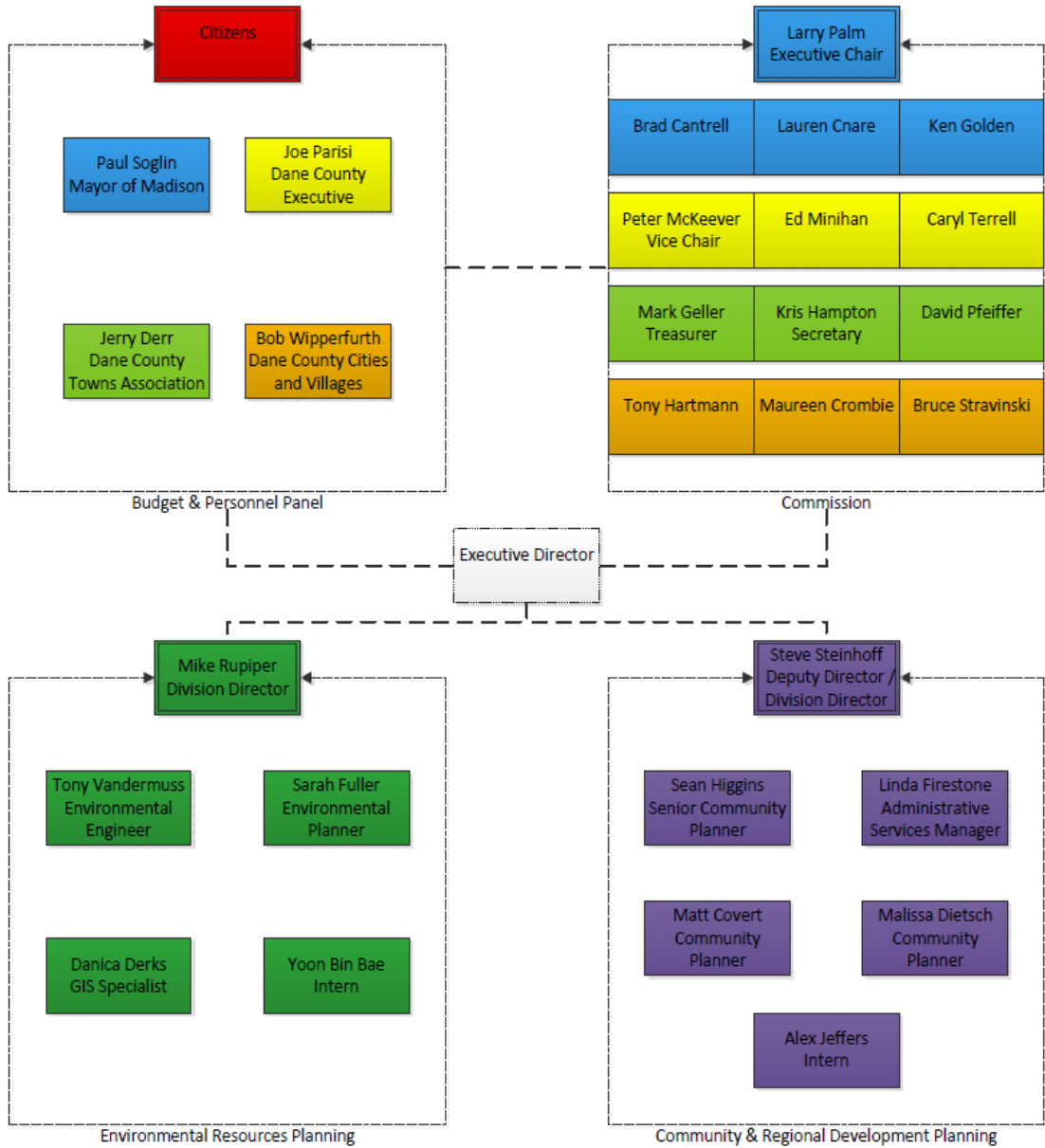


Mike Rupiper, PE, ENV SP
Director of Environmental Resources Planning
Capital Area Regional Planning Commission

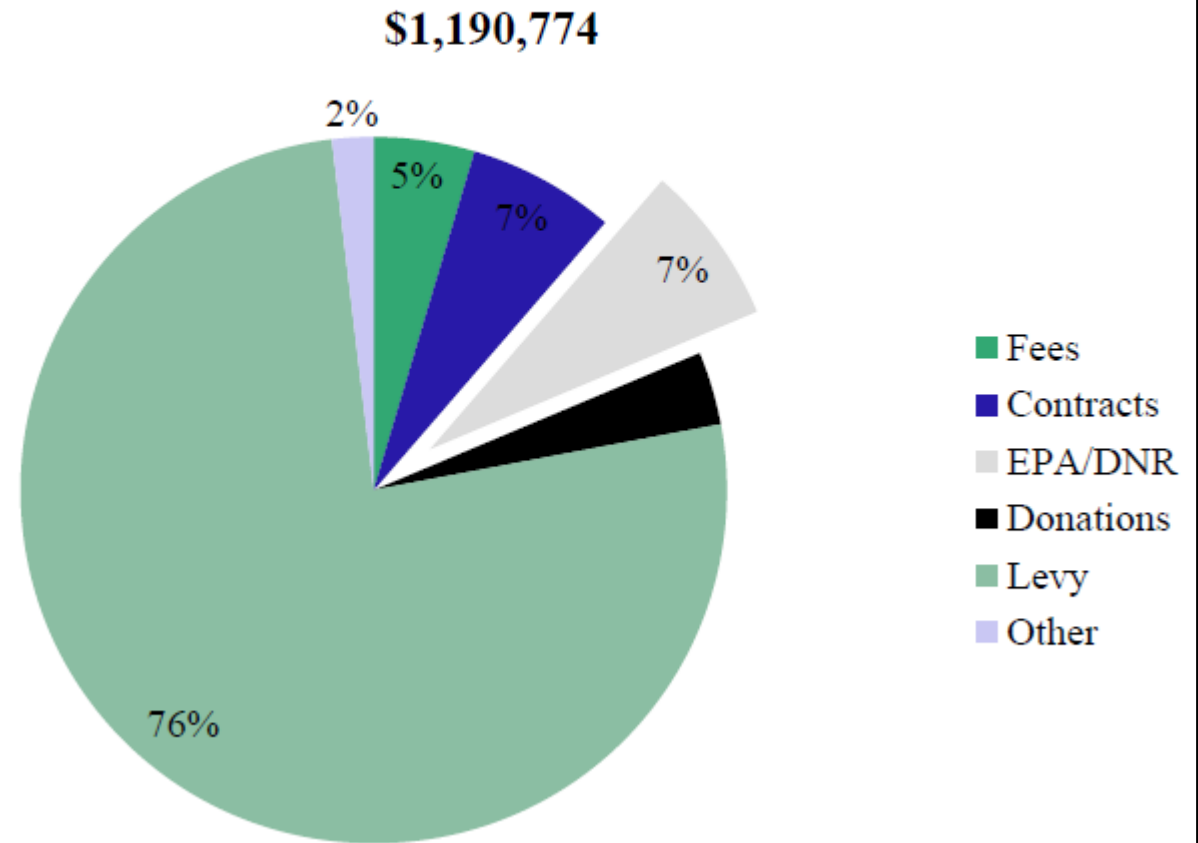
Wisconsin Regional Planning Commissions



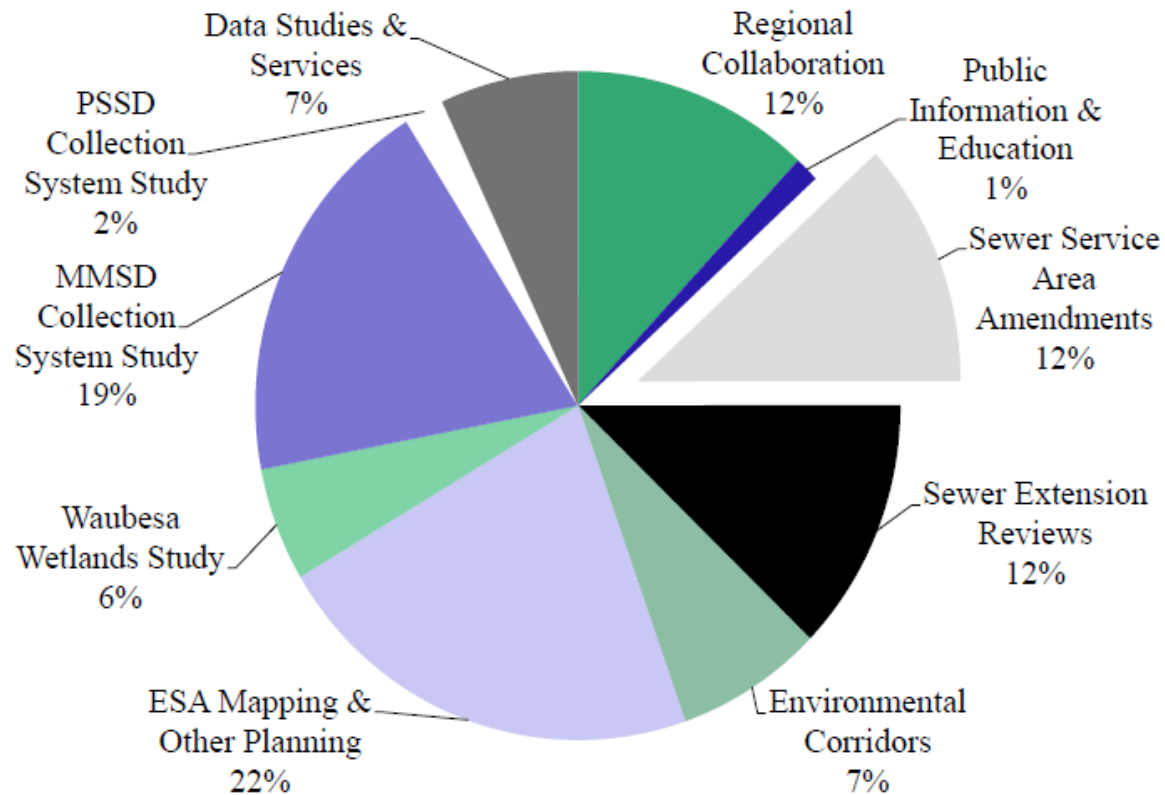
CAPITAL AREA REGIONAL PLANNING COMMISSION



2018 Agency Budget - Revenue



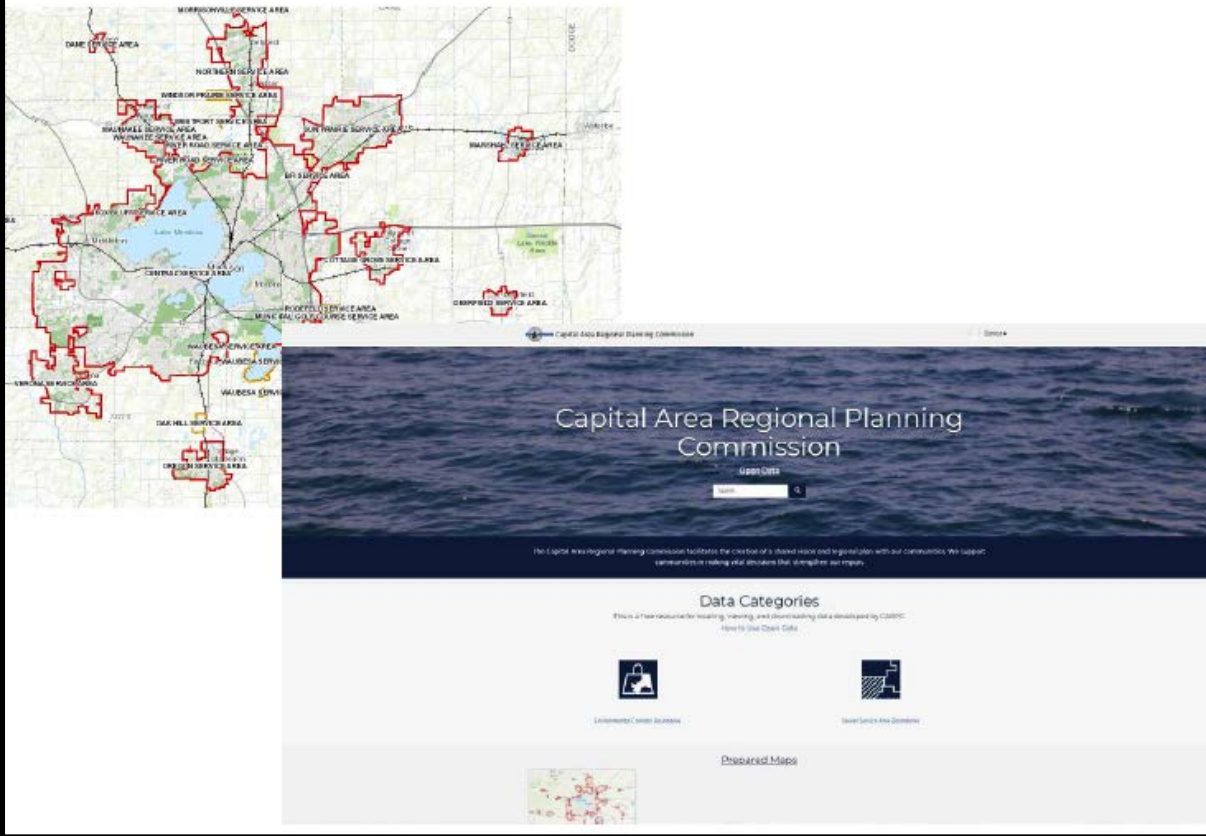
2018 WQMP Work Program



2018 Work Program Emphasis

- Sewer service area plan amendments
- 208 conformance reviews
- Environmentally sensitive area delineation
- Support to local communities
- Data sharing
- Continued process streamlining and coordination with the Department

Data Sharing



Capital Area Regional Planning Commission

SEARCH

The Capital Area Regional Planning Commission facilitates the creation of a shared data and information with our communities. We support communities making vital decisions that strengthen our region.

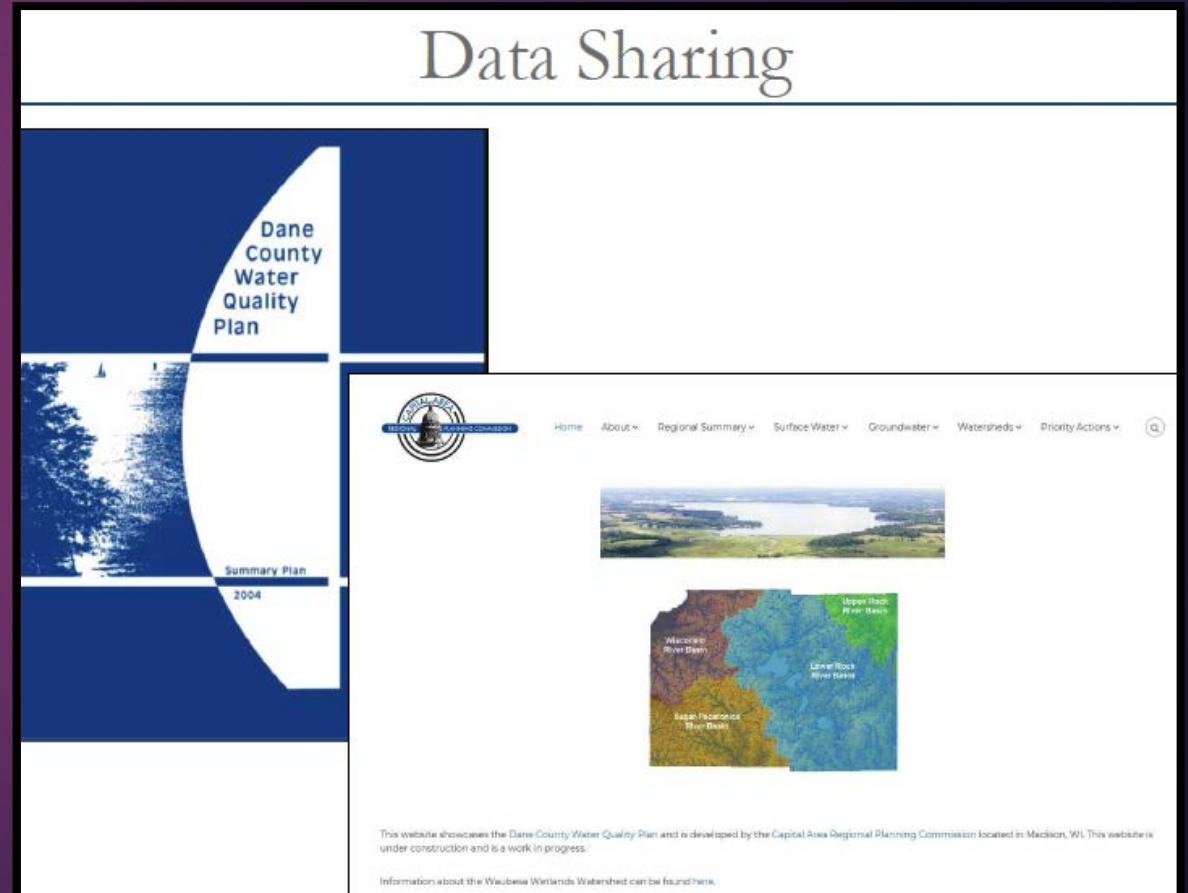
Data Categories

These data categories are being viewed. View data category data developed by CAPRC. [View All Data Categories](#)

- Environmental Data Systems
- Water Quality Data Systems

Powered Maps

Data Sharing



Dane County Water Quality Plan

Summary Plan 2004

Home About Regional Summary Surface Water Groundwater Watersheds Priority Actions

Waubesa River Basin
Lower Rock River Basin
Upper Rock River Basin

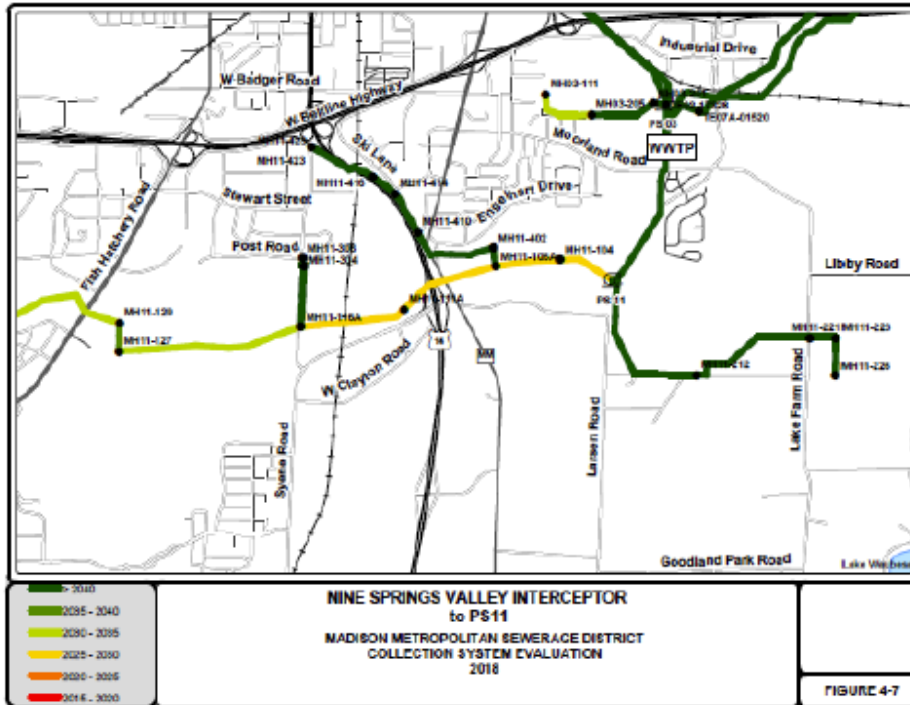
This website showcases the Dane County Water Quality Plan and is developed by the Capital Area Regional Planning Commission located in Madison, WI. This website is under construction and is a work in progress.

Information about the Waubesa Wetlands Watershed can be found [here](#).

MMSD Collection System Evaluation



January 2009



Regional Collaboration

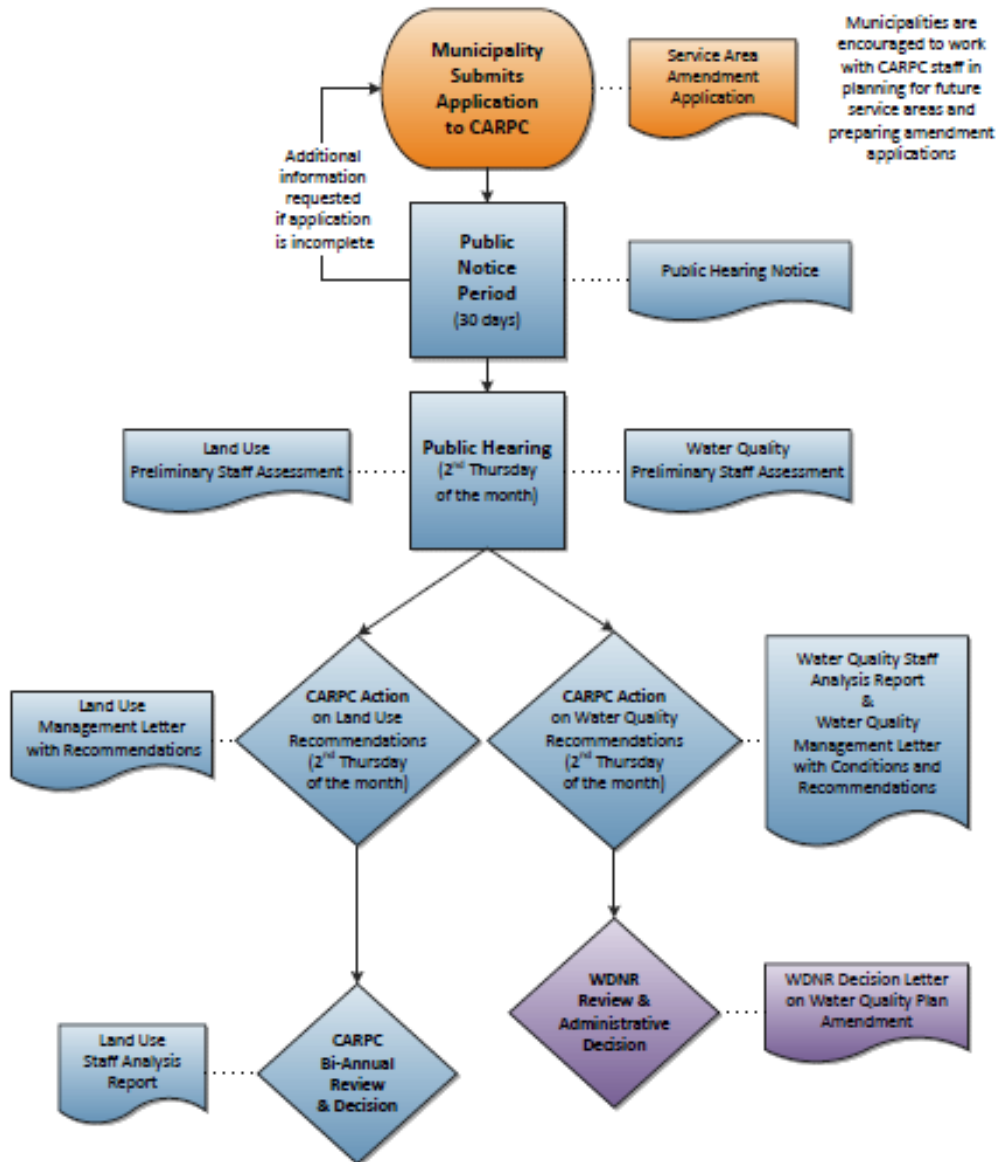
Madison Metropolitan
Sewerage District



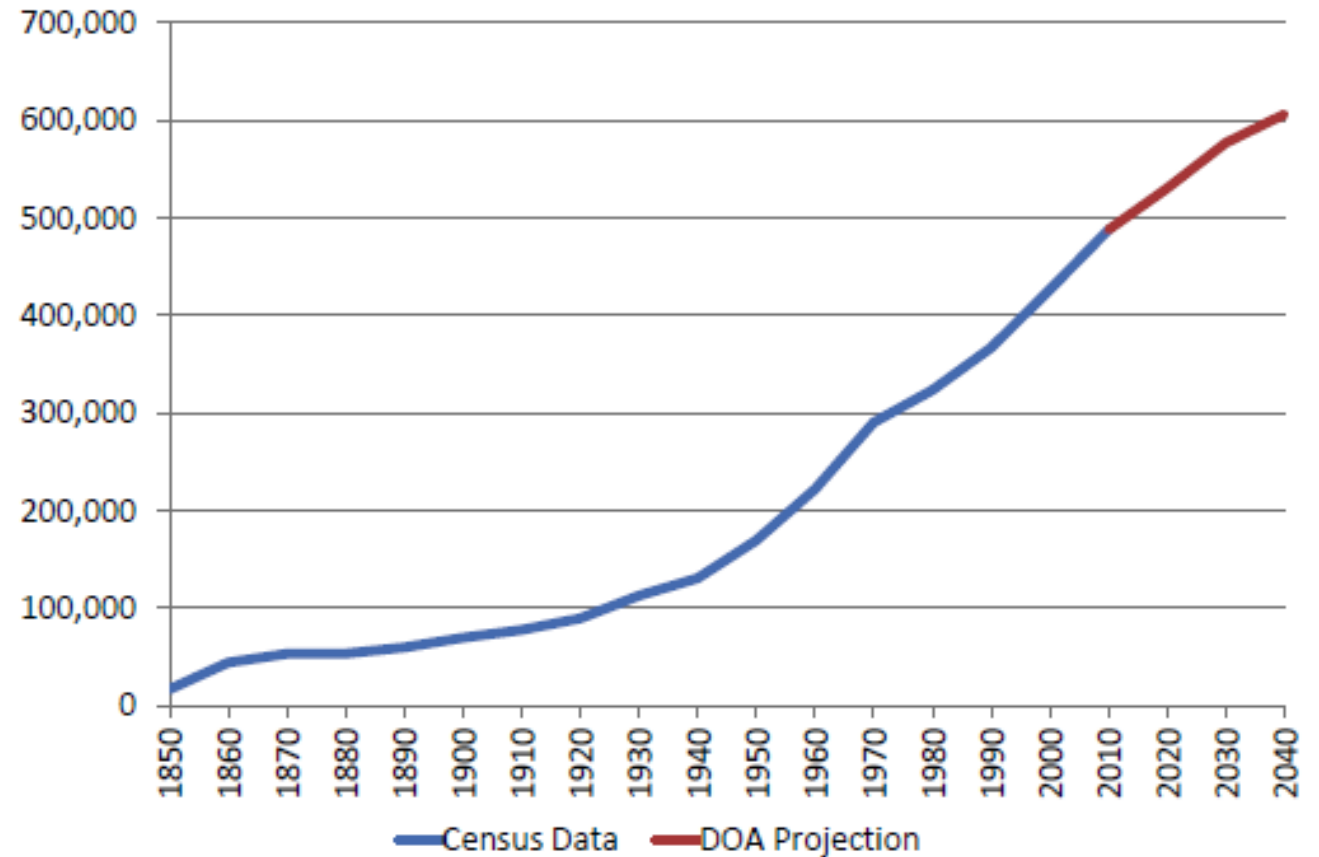
Be
**Salt
Wise!**



Process for Plan Amendments in Dane County WDNR Water Quality Plan & Regional Land Use Plan

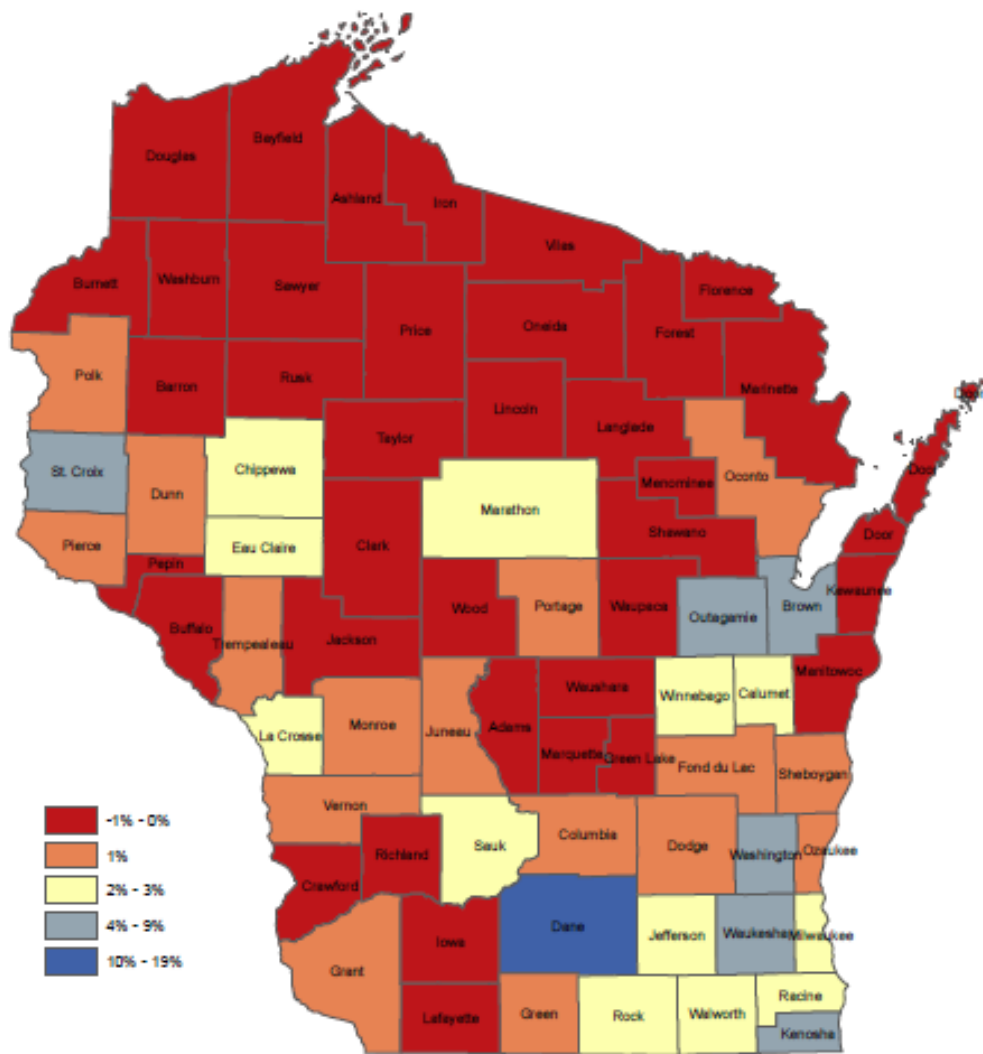


Dane County Population



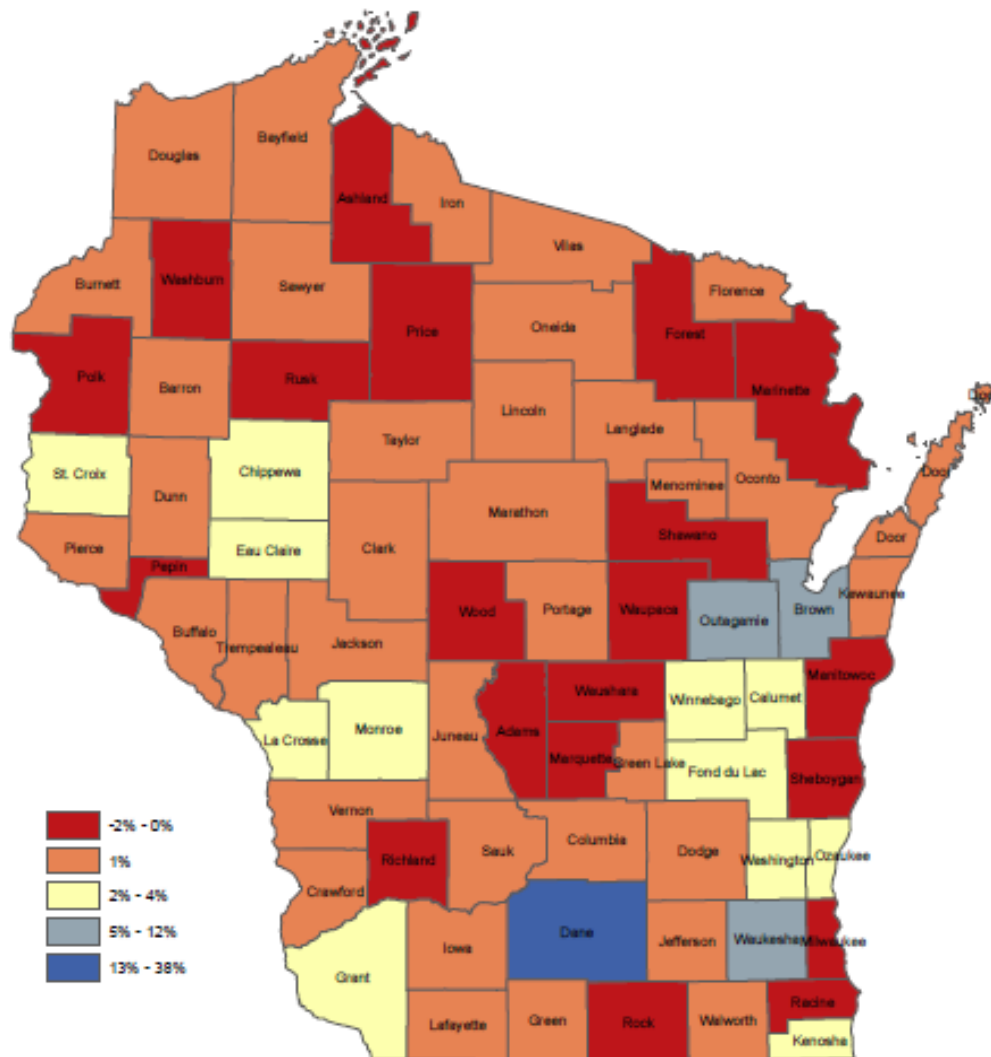
2000 - 2010 Census

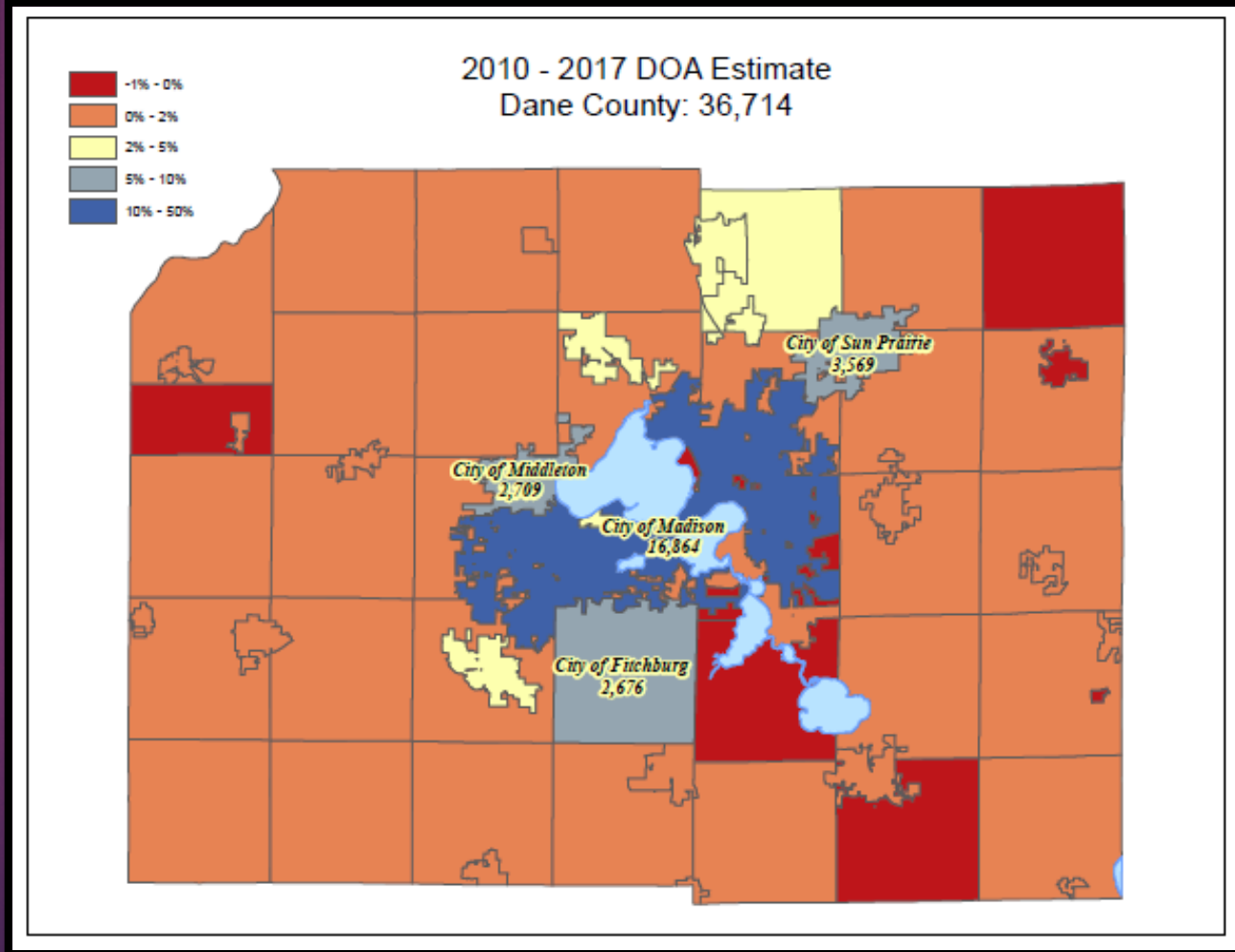
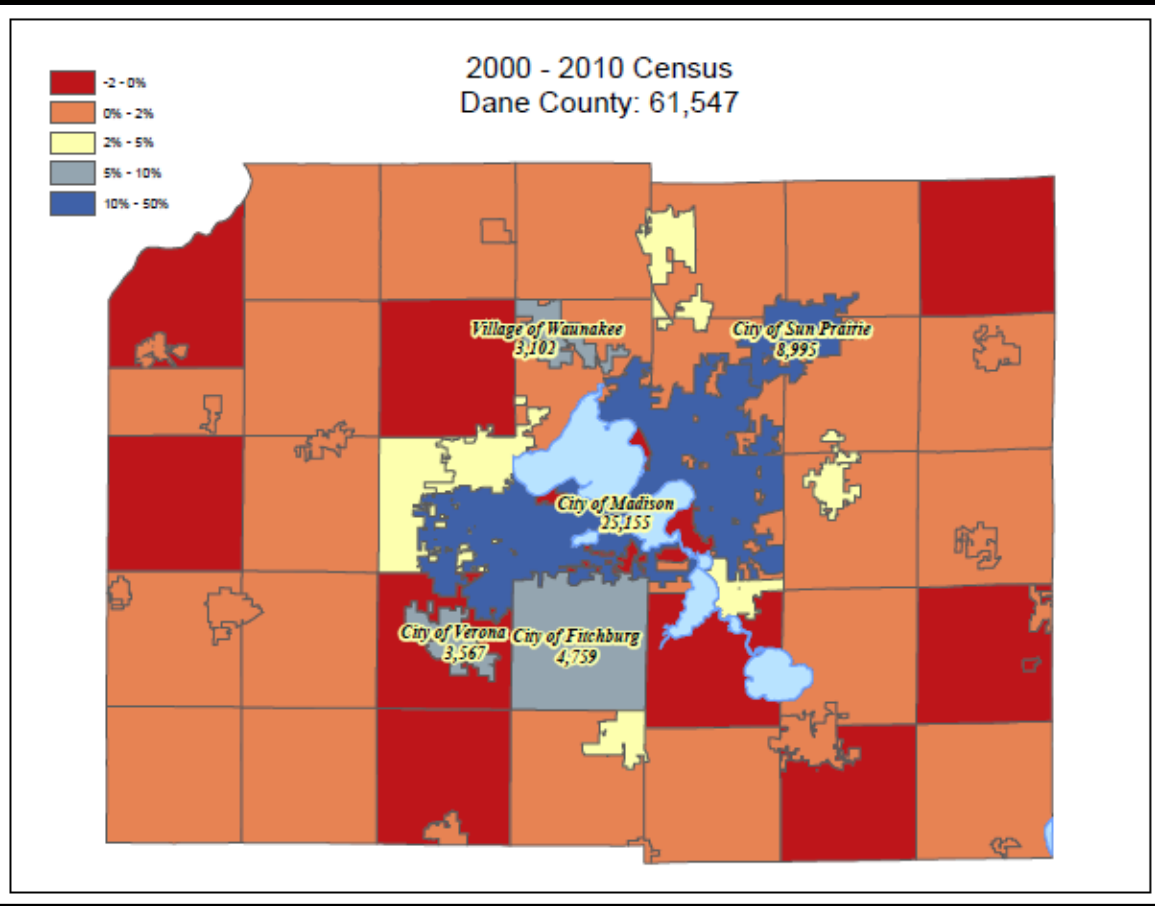
WI Population Growth: 323,271
Dane County: 19%



2010 Census - 2017 DOA Estimate

WI Population Growth: 96,292
Dane County: 38%





FEATURED

POPULATION GROWTH

Madison, Dane County lead the state population growth in latest U.S. Census estimates

LOGAN WROGGE | lwrogge@madison.com | May 27, 2017

- Madison grew more than any other city in the state from 2015 to 2016
- Madison, Fitchburg, Sun Prairie and Verona were among the top 10 largest population gainers for all Wisconsin cities and villages
- Dane County population was 531,273 in 2016 – exceeding population projected by DOA for 2020

A Greater Madison Vision

The Greater Madison Region is **growing...**



...And will be **older** and more **diverse**

150,000+ new residents?

Will they be able to afford to live here?
(Where will we put 70,000 new housing units?)

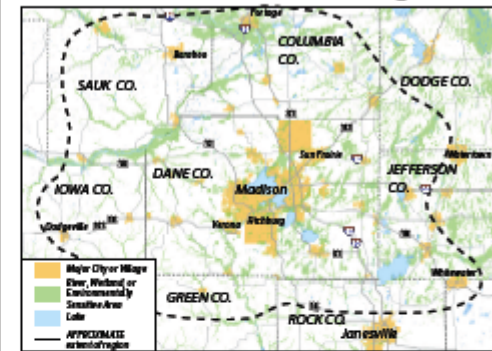
What kinds of work will they find?
(Where will 70,000 new jobs go? What kinds of jobs?)

How will they get around?
(Can we build a 21st century transportation system that works for everybody?)

What will their quality of life be like?
(And can we afford all that infrastructure?)



What is the "Greater Madison Region?"



A region tied together by geography, economy, transportation, natural resources, and cultural identity

"A Greater Madison Vision" seeks to engage community leaders and members to create a compelling vision and plan for the future.



Learn More and Get Involved!

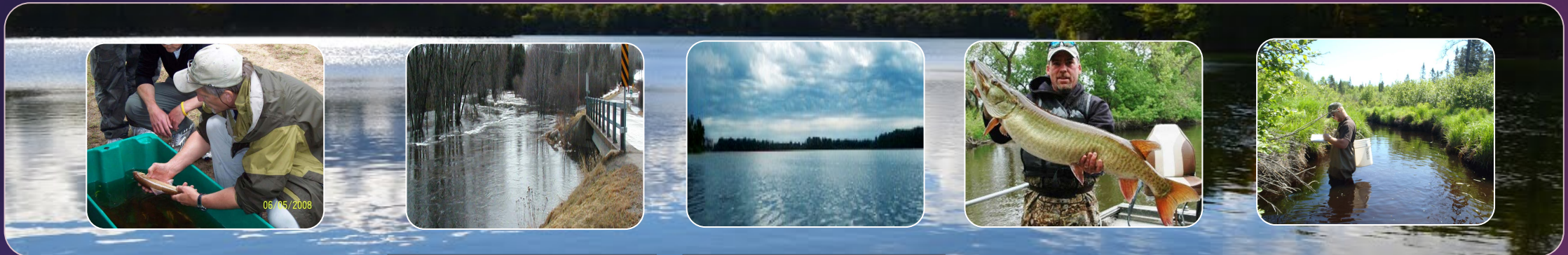
www.agmv.vision

www.facebook.com/GreaterMadisonVision

www.twitter.com/AGM_Vision

DNR Water Quality Planning

Water Quality, Watershed, DW/GW: Tools, Implementation



Water Resources Monitoring/Planning

Targeted Watershed
Based WQM Plans
Sewer Service Area
Planning
205j/604b Planning
Grants

TMDLs

Rock River Recovery
Implementation
Projects
Outreach

Nine Key Element Plans

Cooperative plans
with
implementation
actions and 319
funds **

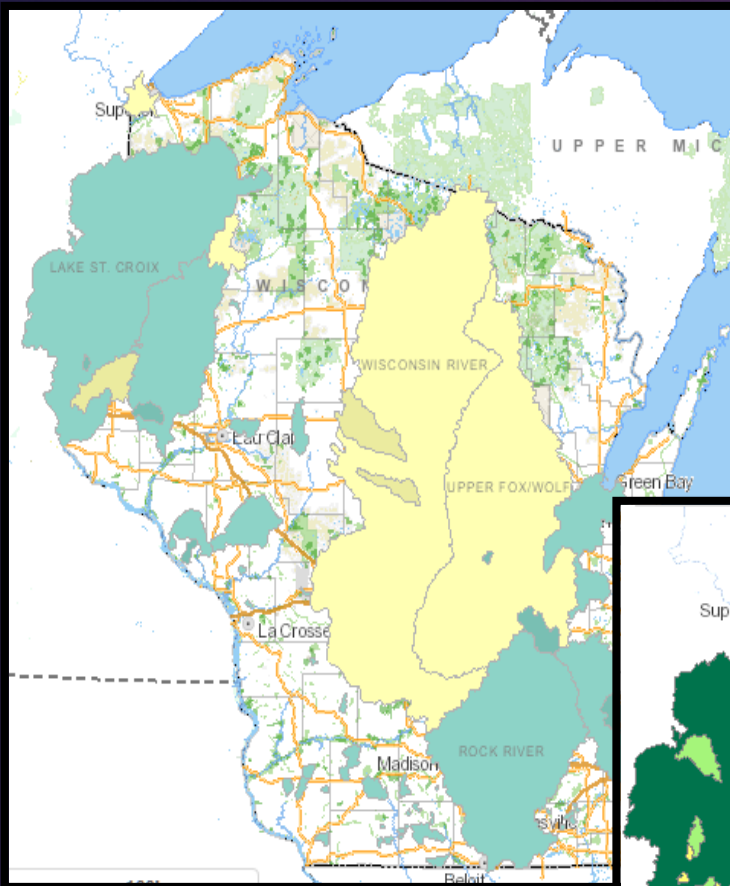
Grants

Runoff Grants
TMDL Grants
River Grants
Lake Grants

Standards Monitoring

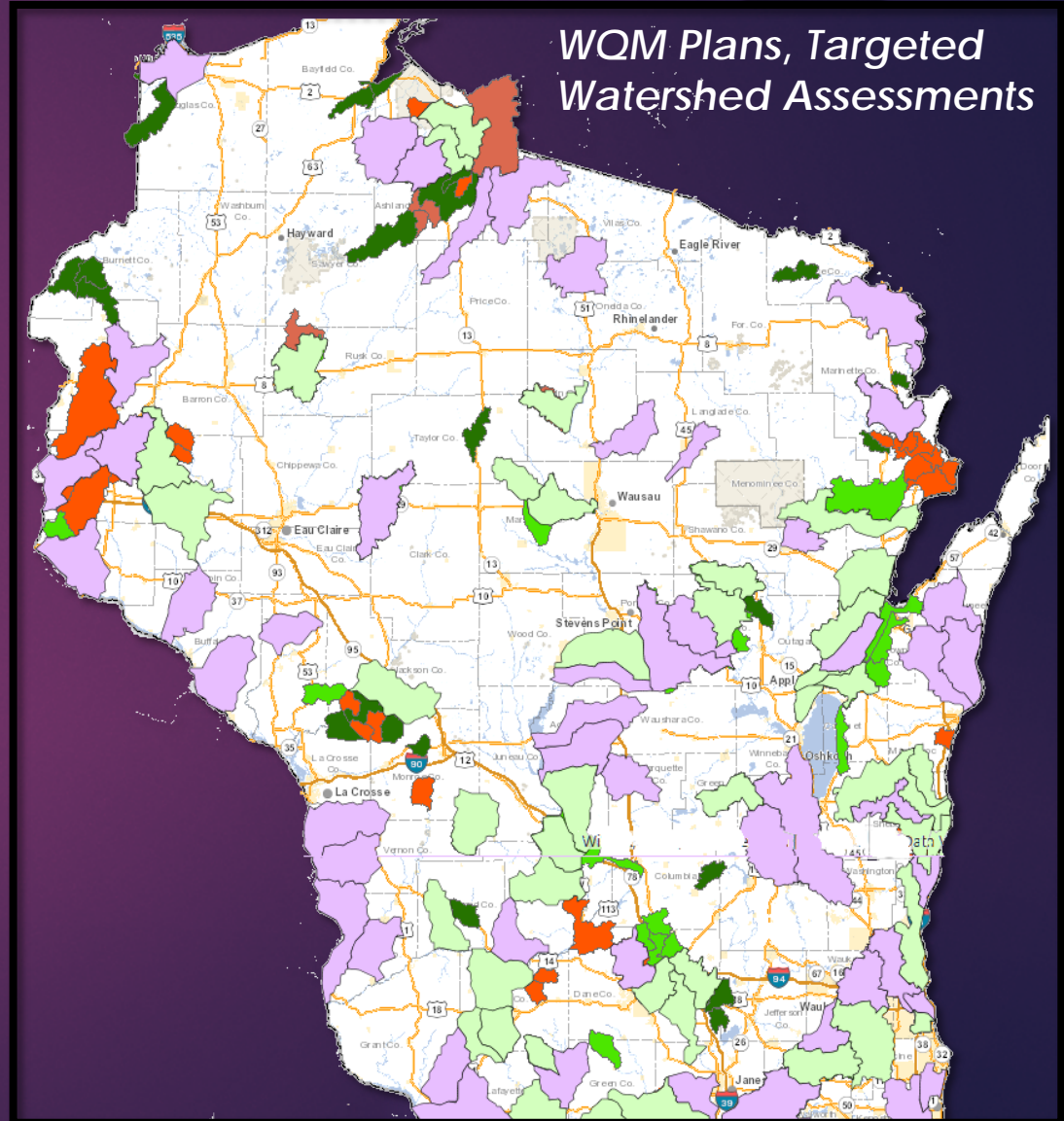
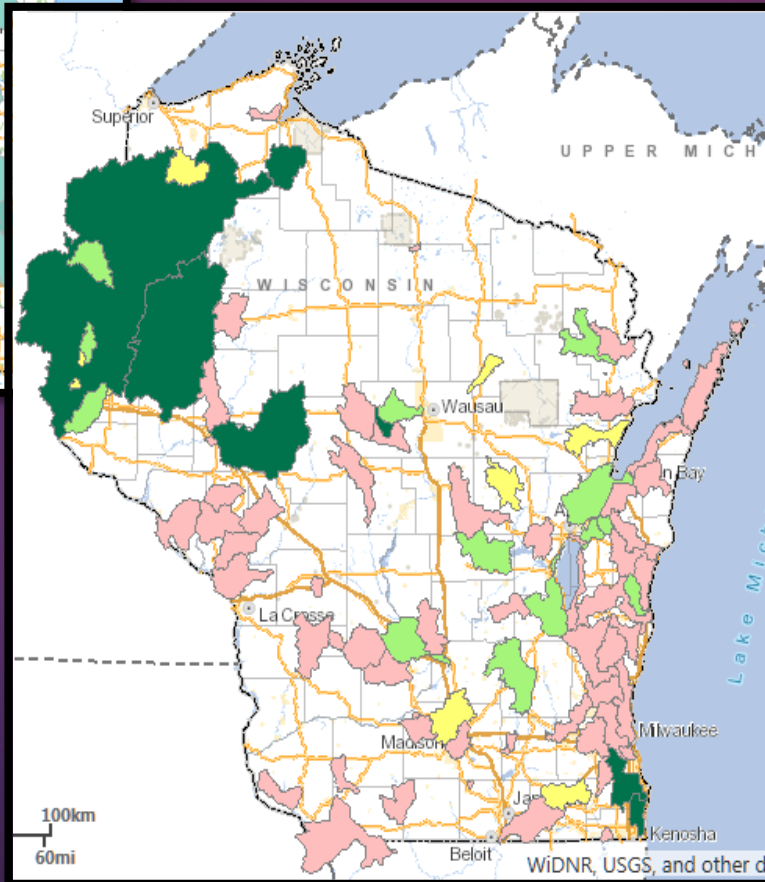
Assessments
Wastewater Mgmt.
Rivers/Streams/Lakes
Grants
Stormwater
Wetlands

DNR Planning Initiatives



TMDLs
Rock River Recovery

Nine Key Element Plans



WQM Plans, Targeted
Watershed Assessments

Contract Program - Opportunities

- ▶ Round Robin ideas
- ▶ Policy Issues
- ▶ GIS Upgrades
- ▶ Outreach Activities
- ▶ Cooperative Data Sharing
- ▶ Support with data maintenance and data entry



Wisconsin DNR overall themes

