

Menomonee River Watershed Fish Passage Survey: Barriers & Potential Habitat Connectivity Butler Creek (WBIC 18100) - Map 1

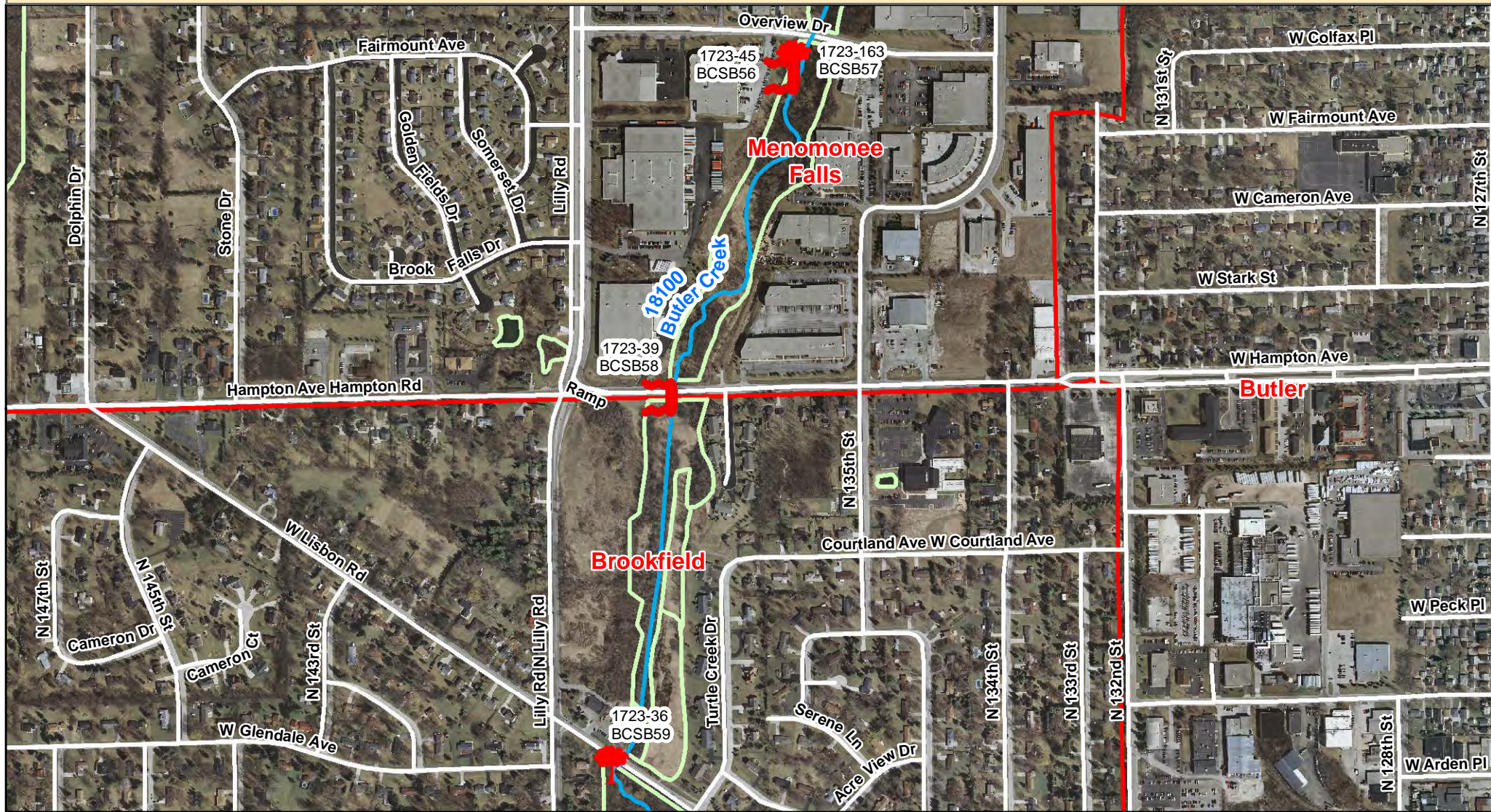


Red (Barrier) Green (Passable)

- | | | | | | | | | | |
|--|--------------------|--|---------------------|--|---------------------|--|--------------------|--|-------------------------|
| | Road Culvert | | Woody Debris Jam | | Dam | | Railroad | | Storm Ditch/Pond Outlet |
| | Railroad Culvert | | Sediment Debris Jam | | Fence | | Stream | | Wetland Outlet |
| | Golf Course Bridge | | Rocky Debris Jam | | Other Feature | | Roadway | | Tributary Outlet |
| | Pedestrian Bridge | | | | Waterfall / Cascade | | County Boundary | | |
| | Free Span Bridge | | | | Low Water Crossing | | Municipal Boundary | | |
| | | | | | | | Wetland Boundary | | |

Menomonee River Watershed Fish Passage Survey: Barriers & Potential Habitat Connectivity

Butler Creek (WBIC 18100) - Map 2

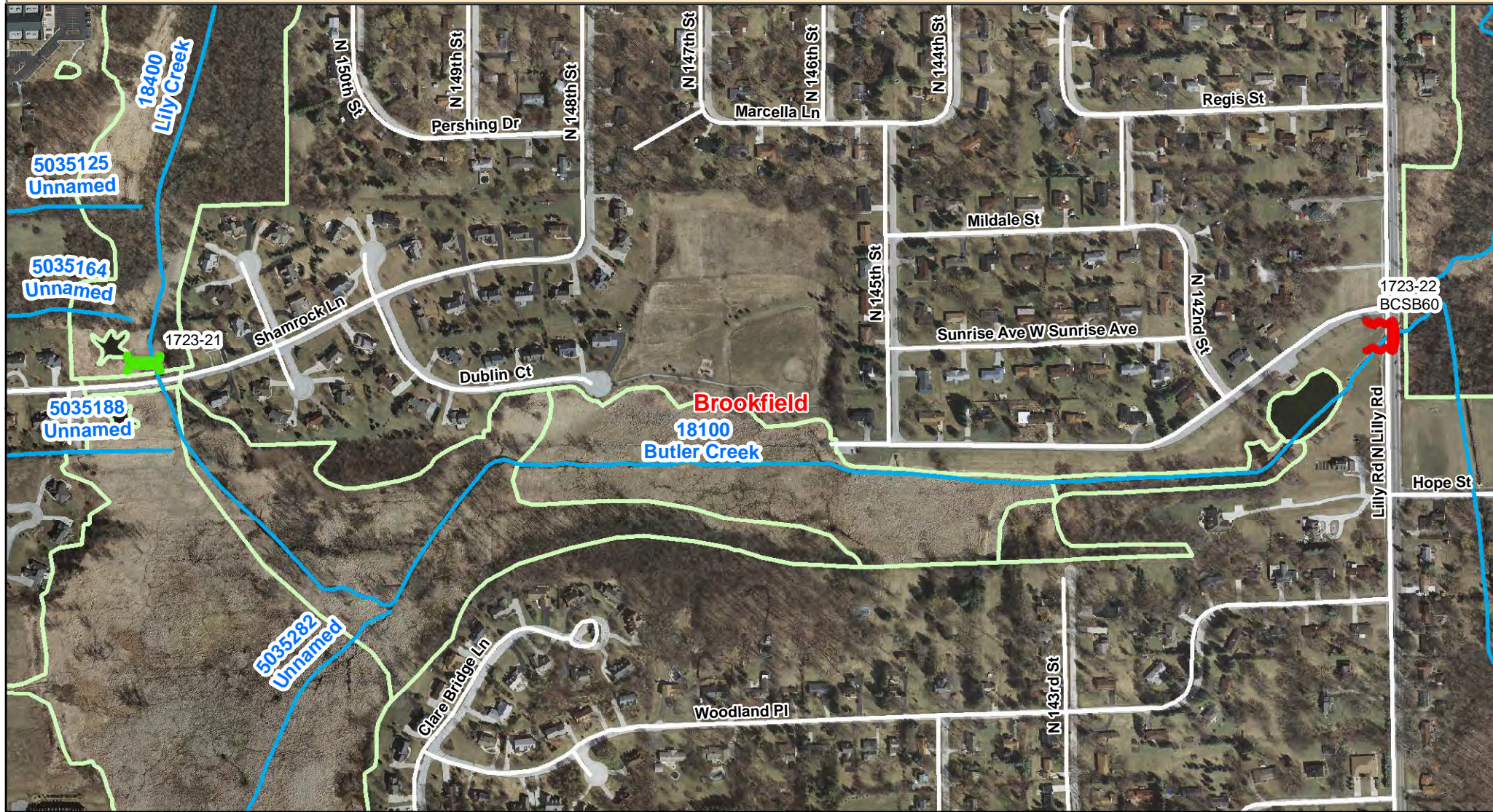


Red (Barrier) Green (Passable)

- | | | | | | | | | | | | |
|--|--|--------------------|--|--|---------------------|--|-----------------|--|--------------------|--|-------------------------|
| | | Road Culvert | | | Woody Debris Jam | | Dam | | Railroad | | Storm Ditch/Pond Outlet |
| | | Railroad Culvert | | | Sediment Debris Jam | | Fence | | Stream | | Wetland Outlet |
| | | Golf Course Bridge | | | Rocky Debris Jam | | Other Feature | | Roadway | | Tributary Outlet |
| | | Pedestrian Bridge | | | Waterfall / Cascade | | County Boundary | | Municipal Boundary | | Wetland Boundary |
| | | Free Span Bridge | | | Low Water Crossing | | | | | | |

Menomonee River Watershed Fish Passage Survey: Barriers & Potential Habitat Connectivity

Butler Creek (WBIC 18100) - Map 3

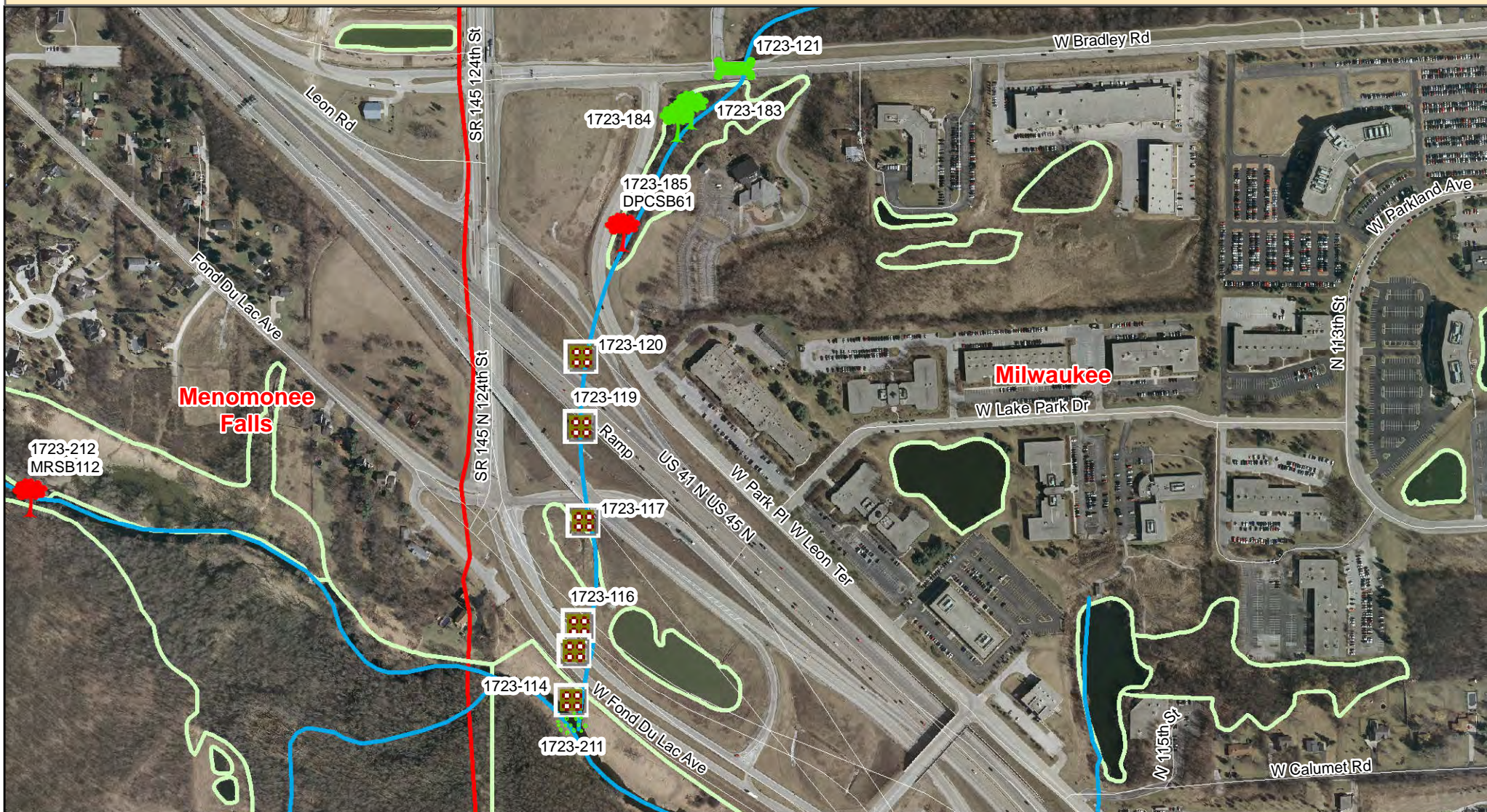


Red (Barrier) Green (Passable)

- | | | | | | | | | | |
|--|--------------------|--|---------------------|--|---------------------|--|--------------------|--|-------------------------|
| | Road Culvert | | Woody Debris Jam | | Dam | | Railroad | | Storm Ditch/Pond Outlet |
| | Railroad Culvert | | Sediment Debris Jam | | Fence | | Stream | | Wetland Outlet |
| | Golf Course Bridge | | Rocky Debris Jam | | Other Feature | | Roadway | | Tributary Outlet |
| | Pedestrian Bridge | | | | Waterfall / Cascade | | County Boundary | | |
| | Free Span Bridge | | | | Low Water Crossing | | Municipal Boundary | | |
| | | | | | | | Wetland Boundary | | |

Menomonee River Watershed Fish Passage Survey: Barriers & Potential Habitat Connectivity

Dretzka Park Creek (WBIC 18350) - Map 1

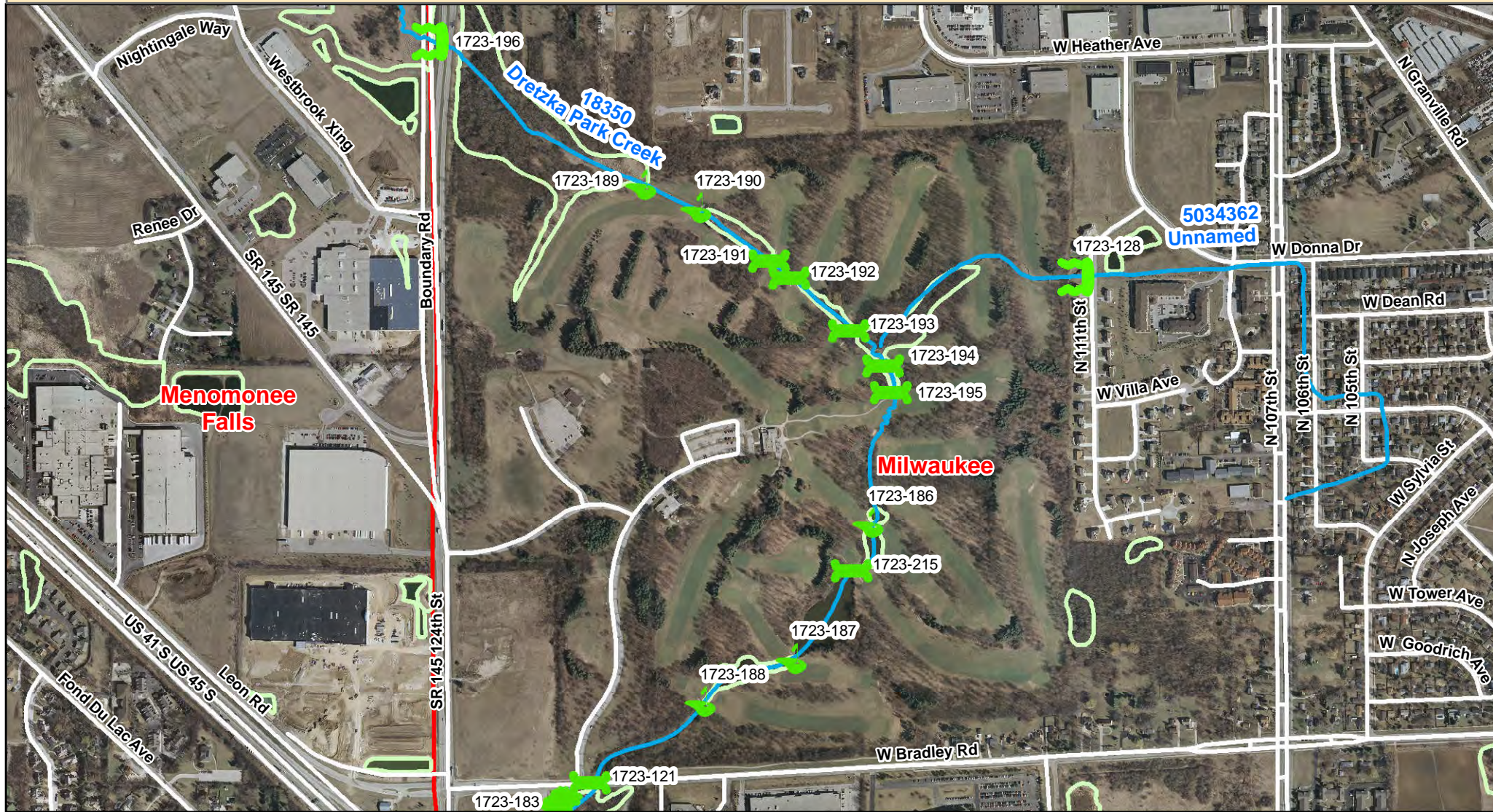


Red (Barrier) Green (Passable)

- | | | | | | | | | | |
|--|--------------------|--|---------------------|--|---------------------|--|------------------|--|-------------------------|
| | Road Culvert | | Woody Debris Jam | | Dam | | Railroad | | Storm Ditch/Pond Outlet |
| | Railroad Culvert | | Sediment Debris Jam | | Fence | | Stream | | Wetland Outlet |
| | Golf Course Bridge | | Rocky Debris Jam | | Other Feature | | Roadway | | Tributary Outlet |
| | Pedestrian Bridge | | Low Flow Barrier | | Waterfall / Cascade | | County Boundary | | Municipal Boundary |
| | Free Span Bridge | | Enclosed Conduit | | Low Water Crossing | | Wetland Boundary | | |

Menomonee River Watershed Fish Passage Survey: Barriers & Potential Habitat Connectivity

Dretzka Park Creek (WBIC 18350) - Map 2

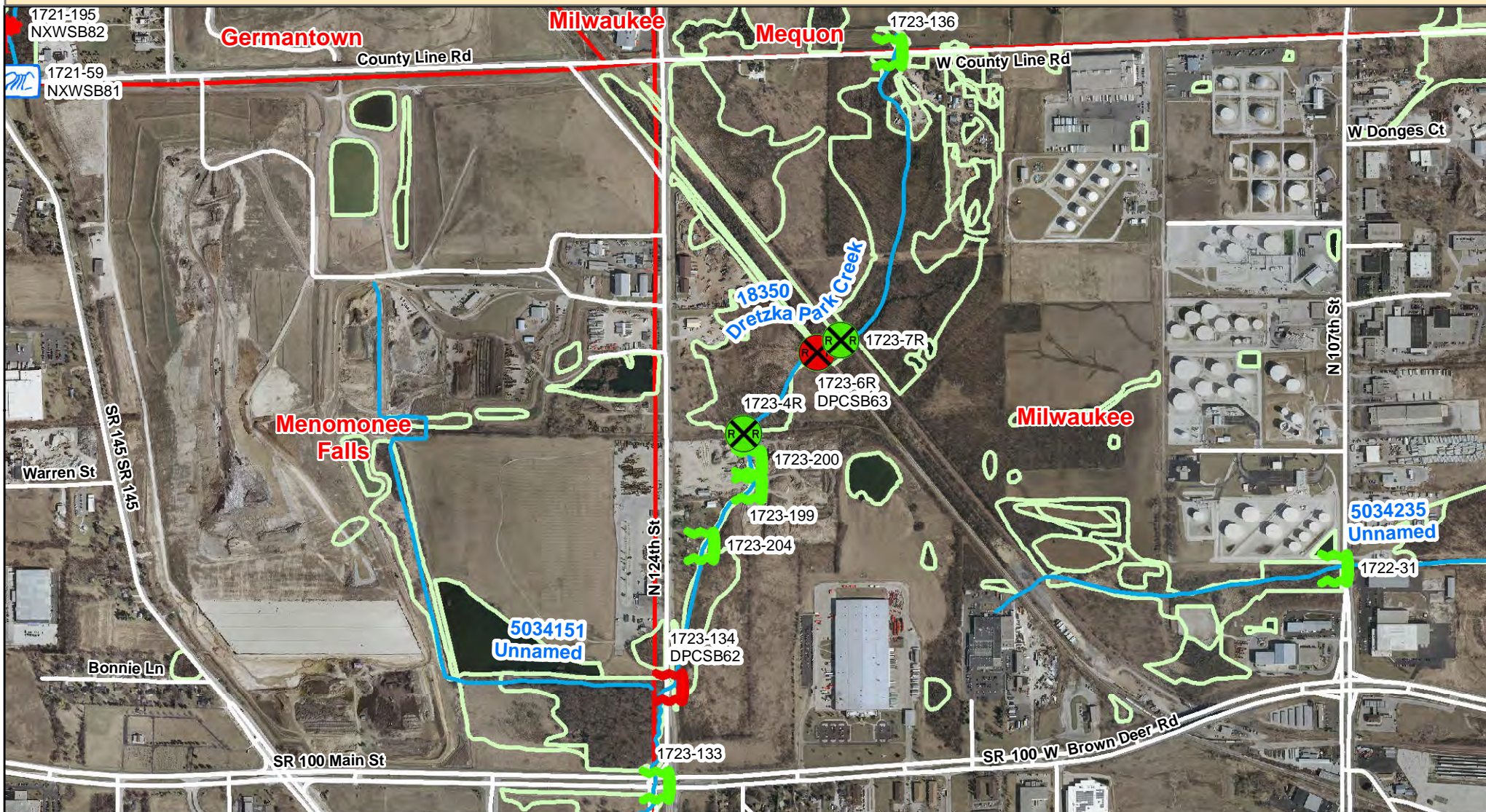


Red (Barrier) Green (Passable)

- | | | | | | | |
|--|--|--|--|--|--|--|
| | | | | | | |
| | | | | | | |
| | | | | | | |
| | | | | | | |
| | | | | | | |

Menomonee River Watershed Fish Passage Survey: Barriers & Potential Habitat Connectivity

Dretzka Park Creek (WBIC 18350) - Map 3

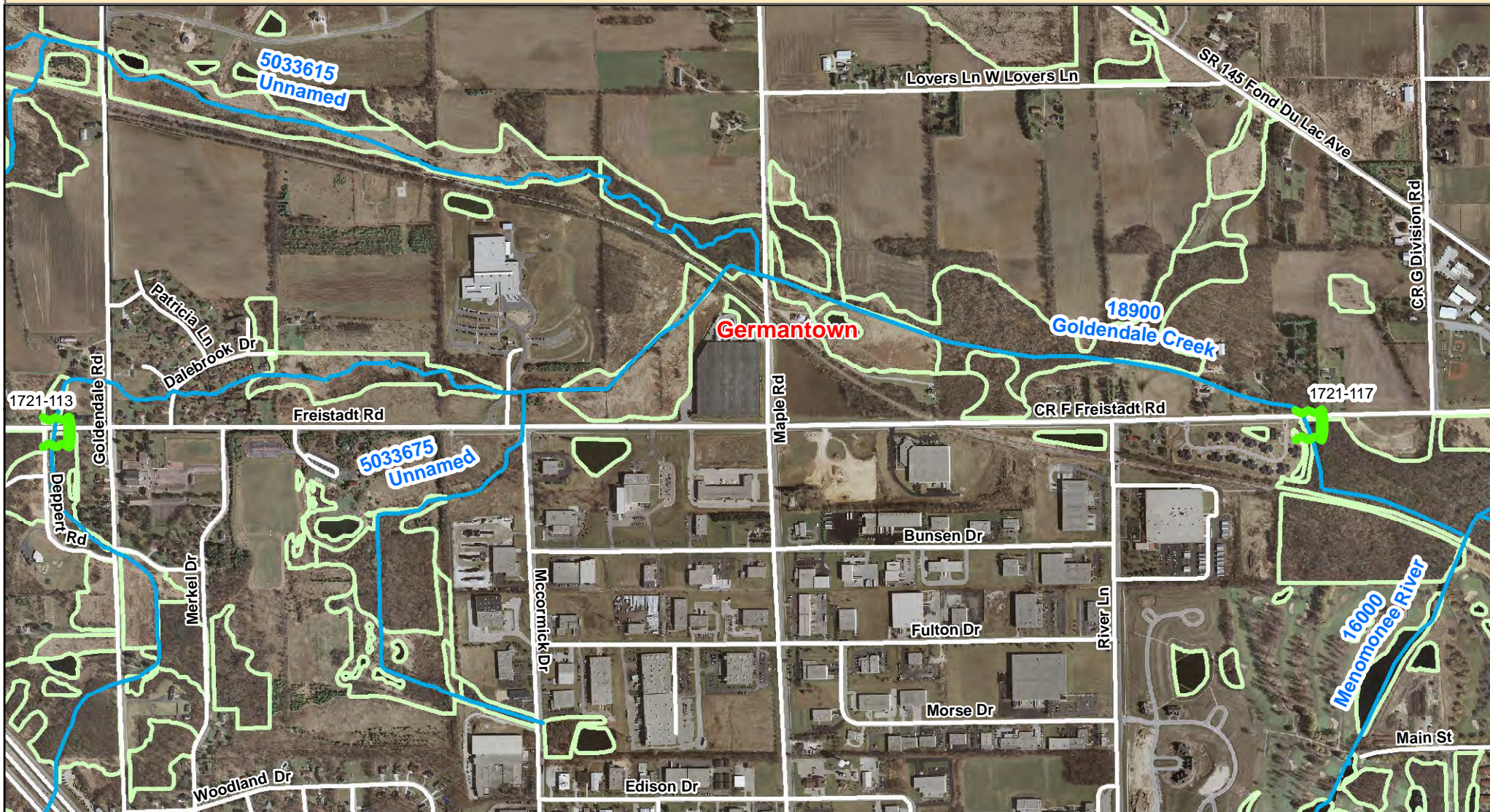


Red (Barrier) Green (Passable)

- | | | | | | | | | | |
|--|--------------------|--|---------------------|--|------------------|--|--------------------|--|-------------------------|
| | Road Culvert | | Woody Debris Jam | | Dam | | Railroad | | Storm Ditch/Pond Outlet |
| | Railroad Culvert | | Sediment Debris Jam | | Fence | | Stream | | Wetland Outlet |
| | Golf Course Bridge | | Rocky Debris Jam | | Other Feature | | Roadway | | Tributary Outlet |
| | Pedestrian Bridge | | Waterfall / Cascade | | County Boundary | | Municipal Boundary | | |
| | Free Span Bridge | | Low Water Crossing | | Wetland Boundary | | | | |

Menomonee River Watershed Fish Passage Survey: Barriers & Potential Habitat Connectivity

Goldendale Creek (WBIC 18900)

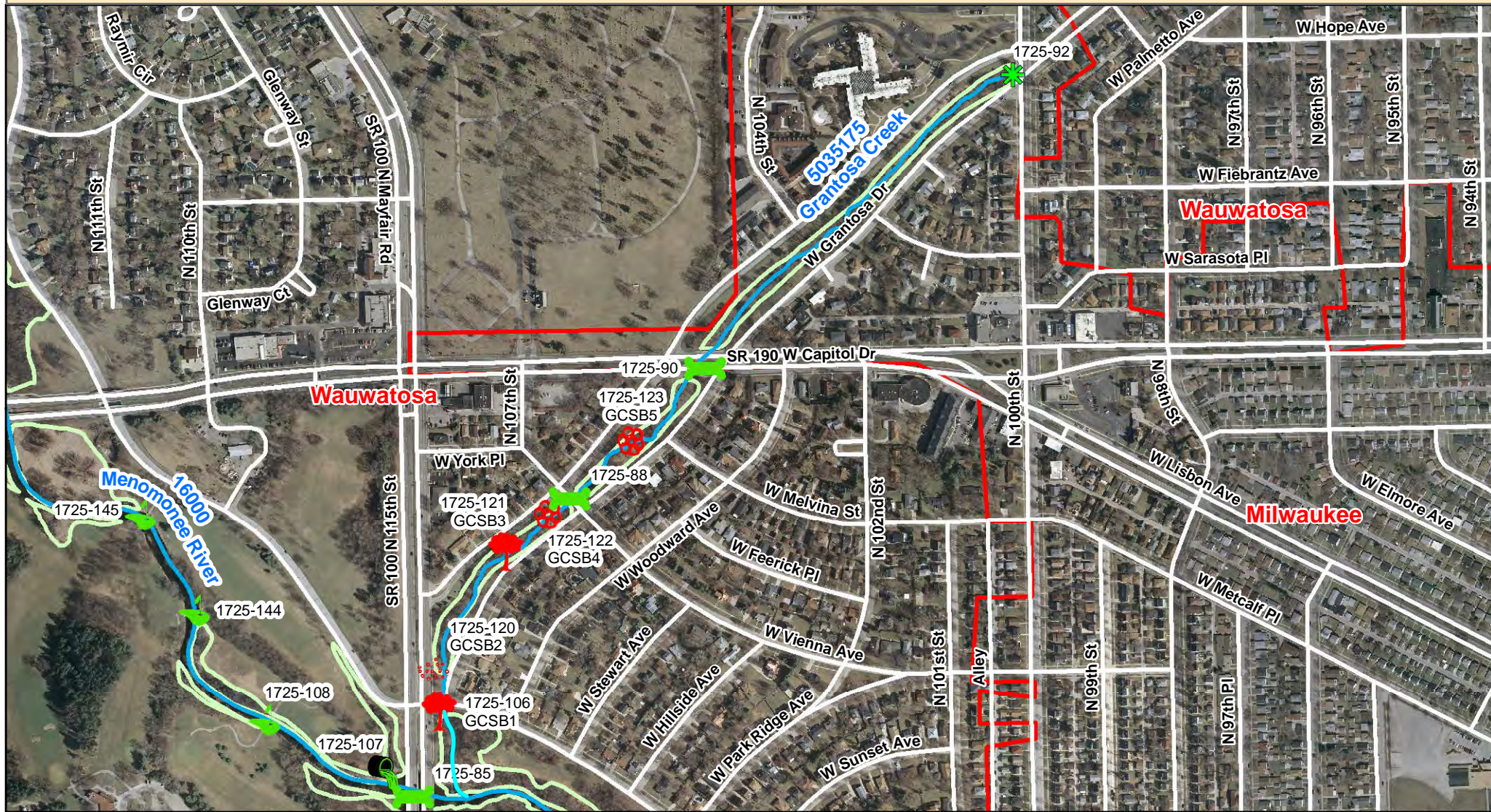


Red (Barrier) Green (Passable)

- | | | | | | | |
|--|--|--|--|--|--|--|
| | | | | | | |
| | | | | | | |
| | | | | | | |
| | | | | | | |
| | | | | | | |

Menomonee River Watershed Fish Passage Survey: Barriers & Potential Habitat Connectivity

Grantosa Creek (WBIC 5035175)

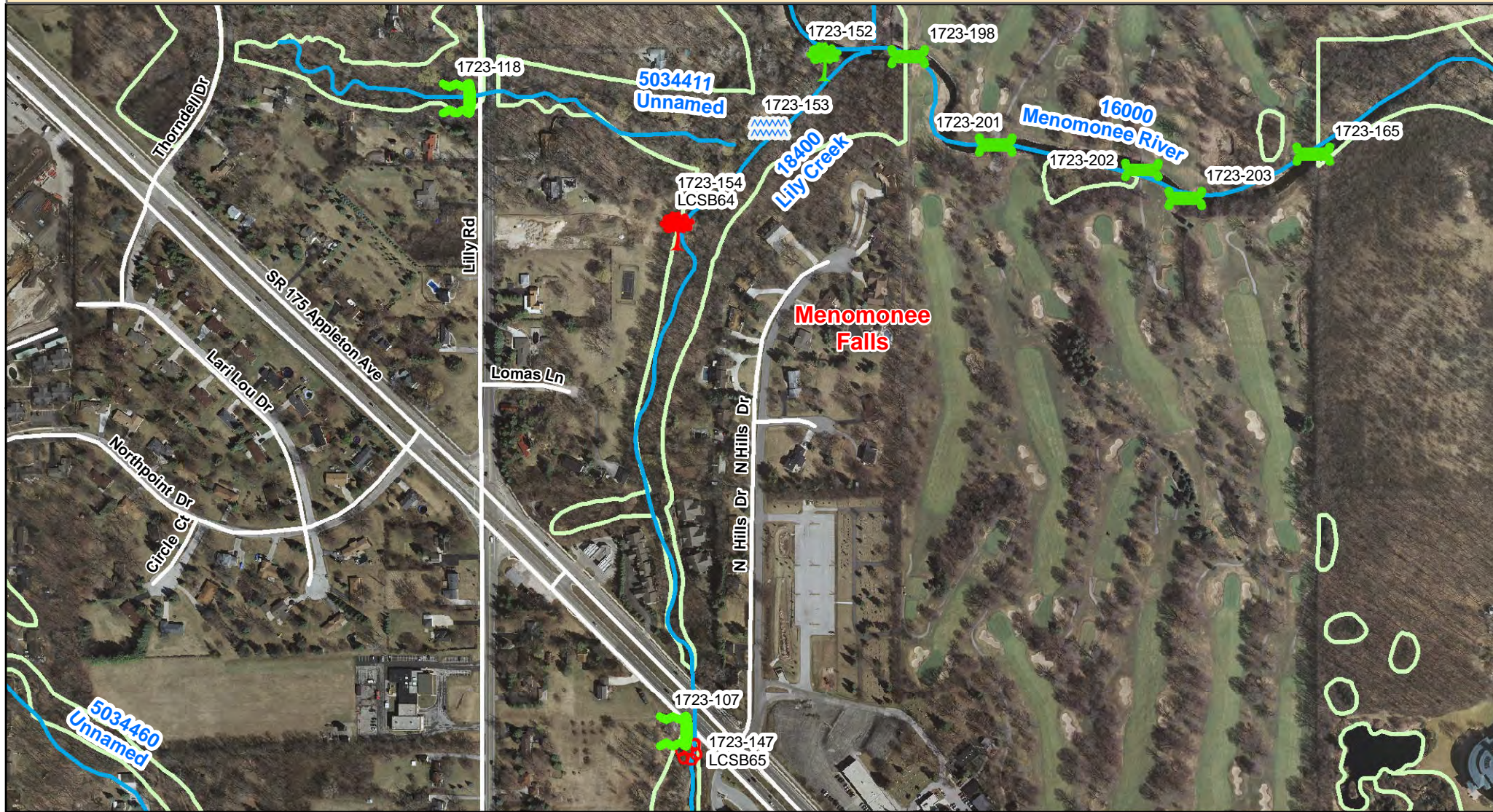


Red (Barrier) Green (Passable)

- | | | | | | | | | | |
|--|--------------------|--|---------------------|--|------------------|--|--------------------|--|-------------------------|
| | Road Culvert | | Woody Debris Jam | | Dam | | Railroad | | Storm Ditch/Pond Outlet |
| | Railroad Culvert | | Sediment Debris Jam | | Fence | | Stream | | Wetland Outlet |
| | Golf Course Bridge | | Rocky Debris Jam | | Other Feature | | Roadway | | Tributary Outlet |
| | Pedestrian Bridge | | Waterfall / Cascade | | County Boundary | | Municipal Boundary | | |
| | Free Span Bridge | | Low Water Crossing | | Wetland Boundary | | | | |

Menomonee River Watershed Fish Passage Survey: Barriers & Potential Habitat Connectivity

Lily Creek (WBIC 18400) - Map 1

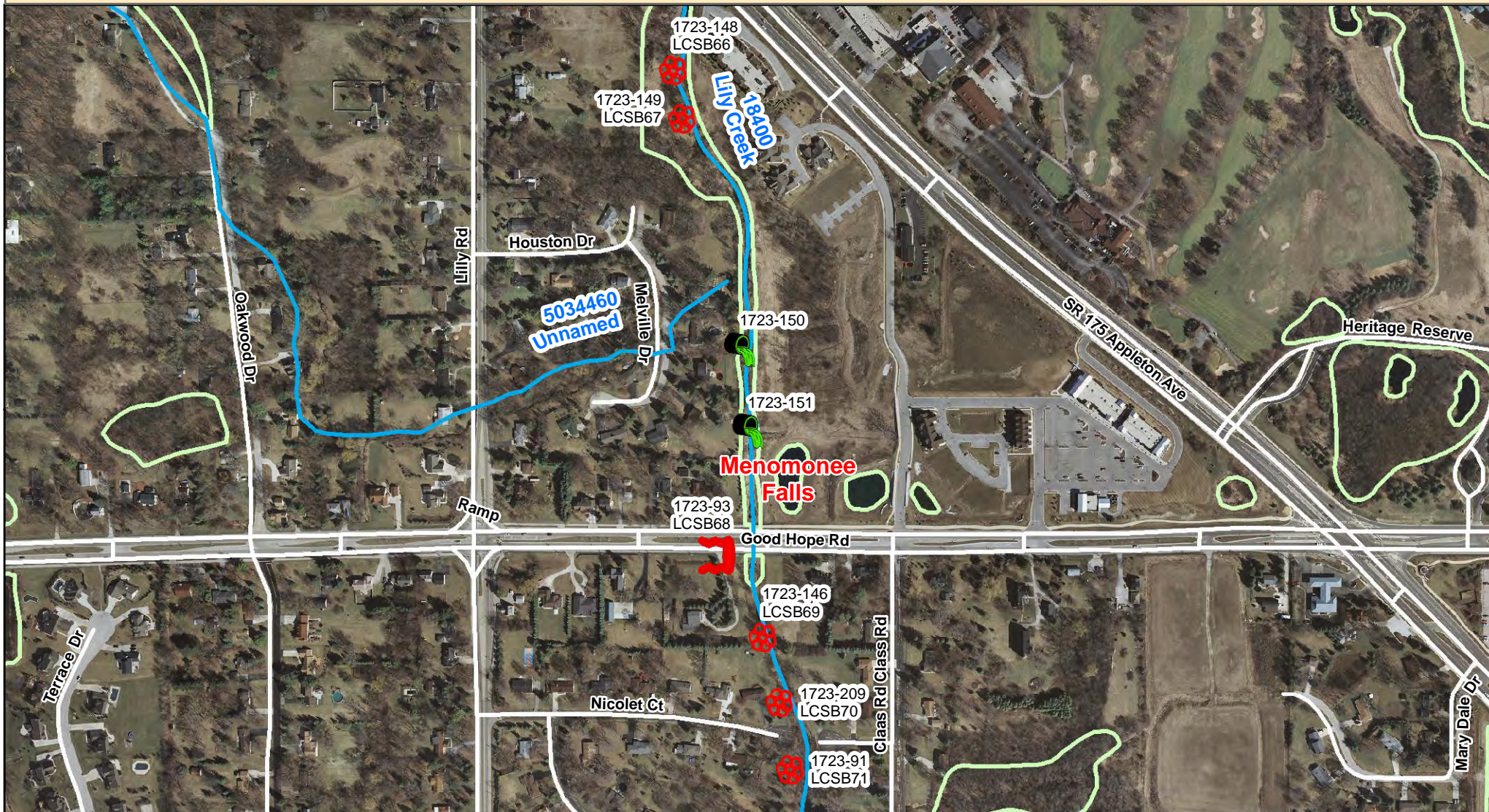


Red (Barrier) Green (Passable)

- | | | | | | | | | | |
|--|--------------------|--|---------------------|--|---------------------|--|------------------|--|-------------------------|
| | Road Culvert | | Woody Debris Jam | | Dam | | Railroad | | Storm Ditch/Pond Outlet |
| | Railroad Culvert | | Sediment Debris Jam | | Fence | | Stream | | Wetland Outlet |
| | Golf Course Bridge | | Rocky Debris Jam | | Other Feature | | Roadway | | Tributary Outlet |
| | Pedestrian Bridge | | | | Waterfall / Cascade | | County Boundary | | Municipal Boundary |
| | Free Span Bridge | | | | Low Water Crossing | | Wetland Boundary | | |

Menomonee River Watershed Fish Passage Survey: Barriers & Potential Habitat Connectivity

Lily Creek (WBIC 18400) - Map 2

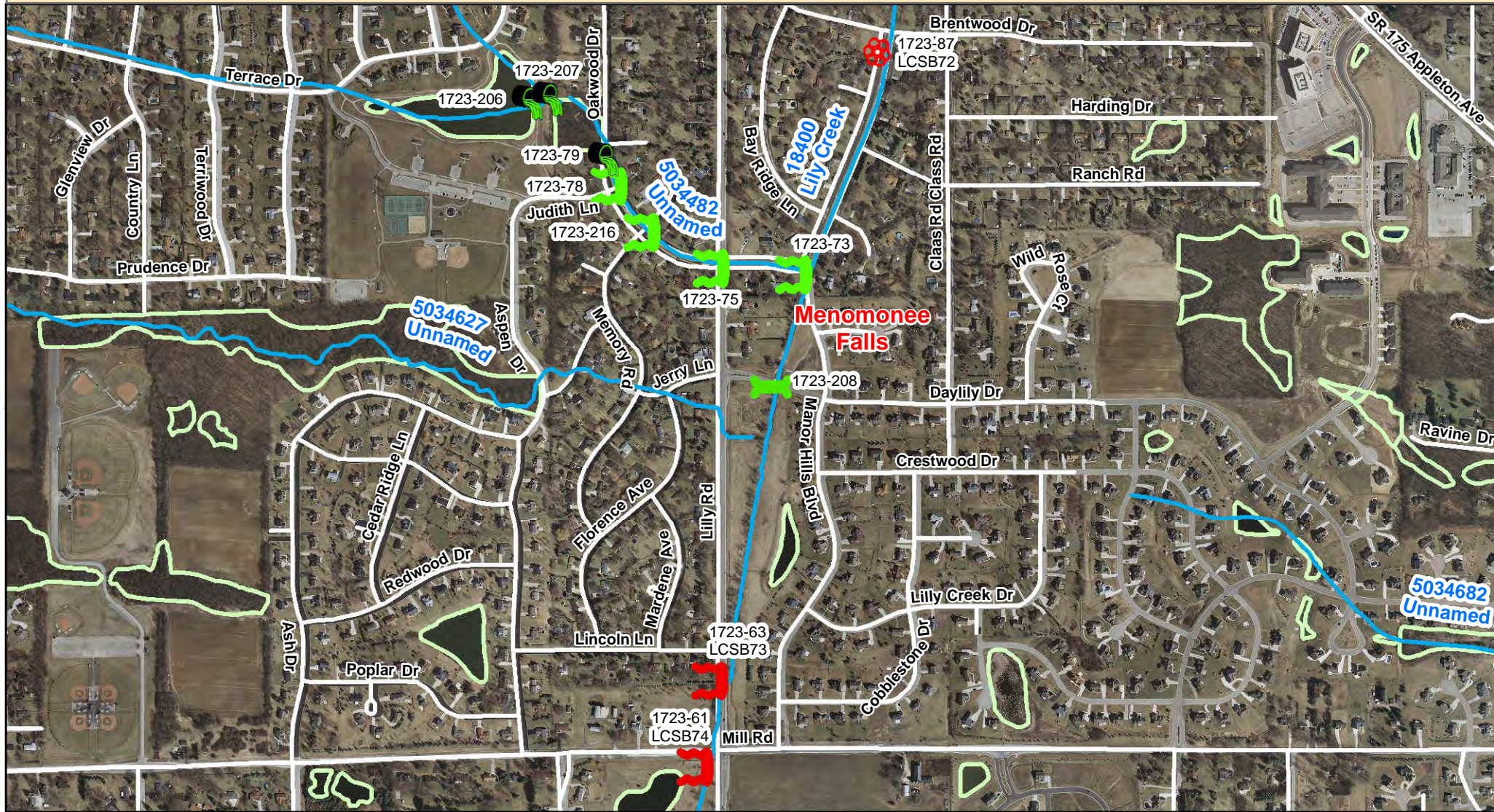


Red (Barrier) Green (Passable)

- | | | | | | | | | | |
|--|--------------------|--|---------------------|--|---------------------|--|--------------------|--|-------------------------|
| | Road Culvert | | Woody Debris Jam | | Dam | | Railroad | | Storm Ditch/Pond Outlet |
| | Railroad Culvert | | Sediment Debris Jam | | Fence | | Stream | | Wetland Outlet |
| | Golf Course Bridge | | Rocky Debris Jam | | Other Feature | | Roadway | | Tributary Outlet |
| | Pedestrian Bridge | | | | Waterfall / Cascade | | County Boundary | | |
| | Free Span Bridge | | | | Low Water Crossing | | Municipal Boundary | | |
| | | | | | | | Wetland Boundary | | |

Menomonee River Watershed Fish Passage Survey: Barriers & Potential Habitat Connectivity

Lily Creek (WBIC 18400) - Map 3

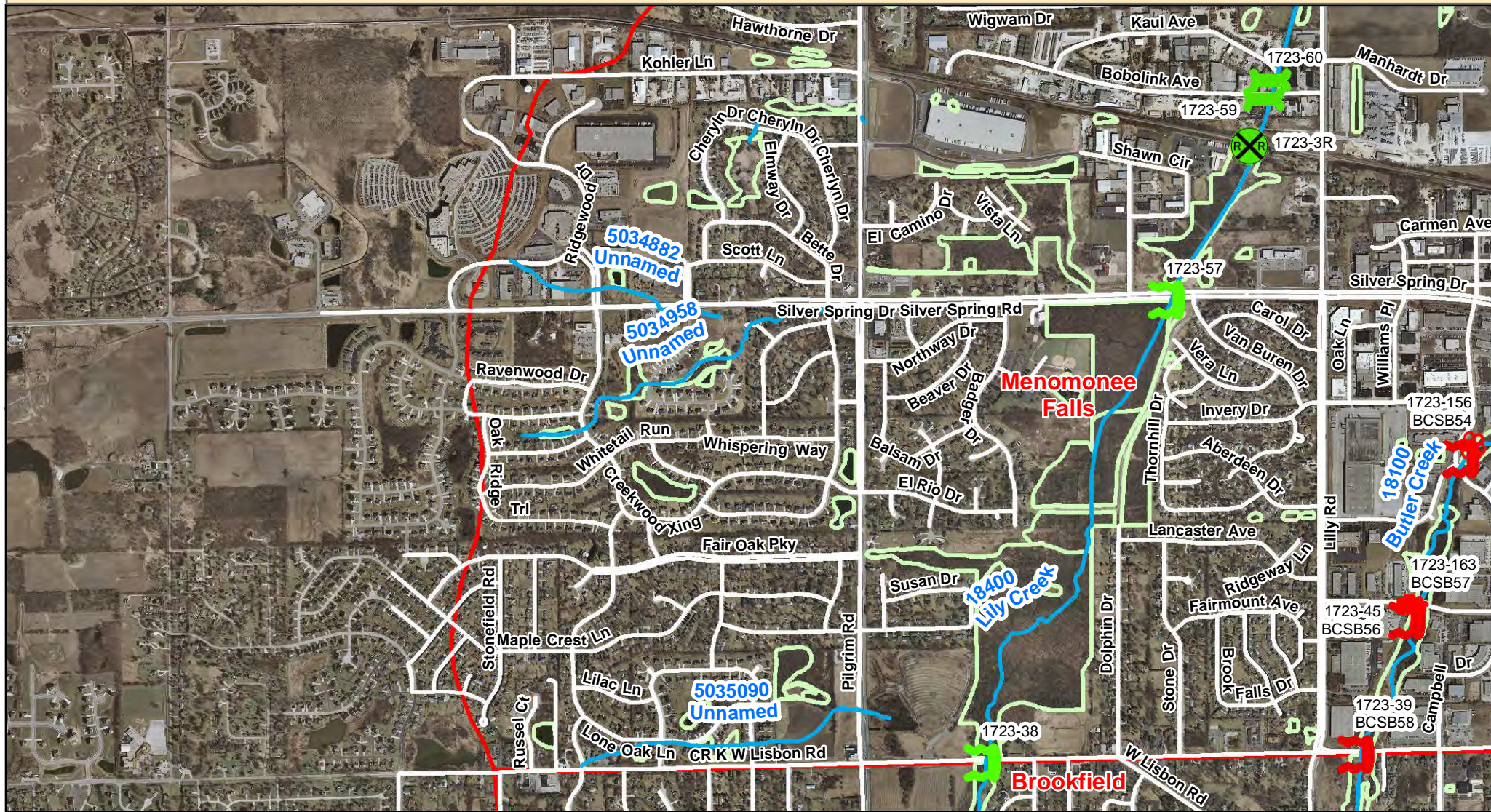


Red (Barrier) Green (Passable)

- | | | | | | | | | | |
|--|--------------------|--|---------------------|--|------------------|--|--------------------|--|-------------------------|
| | Road Culvert | | Woody Debris Jam | | Dam | | Railroad | | Storm Ditch/Pond Outlet |
| | Railroad Culvert | | Sediment Debris Jam | | Fence | | Stream | | Wetland Outlet |
| | Golf Course Bridge | | Rocky Debris Jam | | Other Feature | | Roadway | | Tributary Outlet |
| | Pedestrian Bridge | | Waterfall / Cascade | | County Boundary | | Municipal Boundary | | |
| | Free Span Bridge | | Low Water Crossing | | Wetland Boundary | | | | |

Menomonee River Watershed Fish Passage Survey: Barriers & Potential Habitat Connectivity

Lily Creek (WBIC 18400) - Map 4



Red (Barrier) Green (Passable)

- | | | | | | | | | | |
|--|--------------------|--|---------------------|--|------------------|--|--------------------|--|-------------------------|
| | Road Culvert | | Woody Debris Jam | | Dam | | Railroad | | Storm Ditch/Pond Outlet |
| | Railroad Culvert | | Sediment Debris Jam | | Fence | | Stream | | Wetland Outlet |
| | Golf Course Bridge | | Rocky Debris Jam | | Other Feature | | Roadway | | Tributary Outlet |
| | Pedestrian Bridge | | Waterfall / Cascade | | County Boundary | | Municipal Boundary | | |
| | Free Span Bridge | | Low Water Crossing | | Wetland Boundary | | | | |

Menomonee River Watershed Fish Passage Survey: Barriers & Potential Habitat Connectivity

Little Menomonee Creek (WBIC 17900) - Map 1

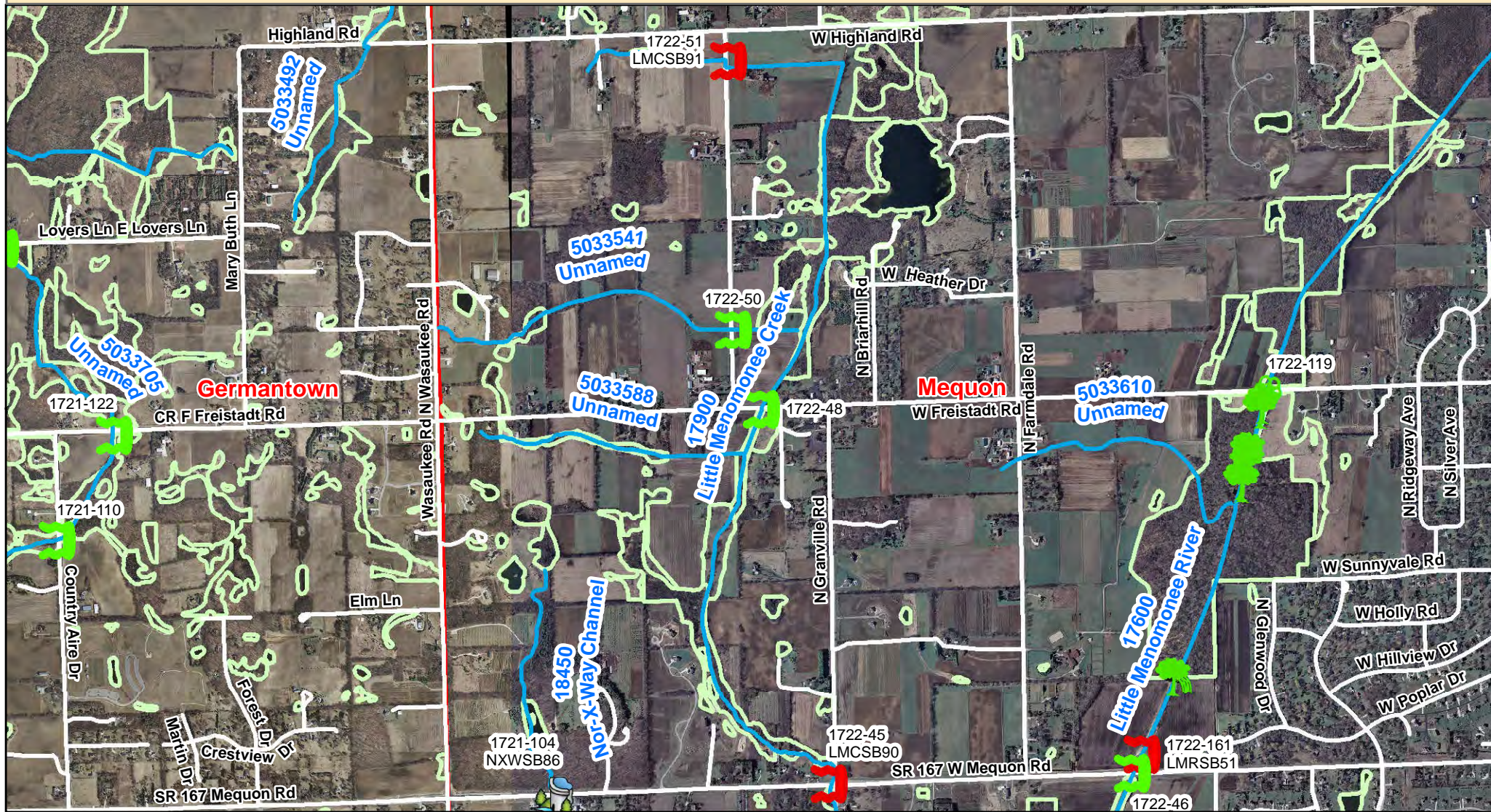


Red (Barrier) Green (Passable)

- | | | | | | | | | | |
|--|--------------------|--|---------------------|--|---------------------|--|--------------------|--|-------------------------|
| | Road Culvert | | Woody Debris Jam | | Dam | | Railroad | | Storm Ditch/Pond Outlet |
| | Railroad Culvert | | Sediment Debris Jam | | Fence | | Stream | | Wetland Outlet |
| | Golf Course Bridge | | Rocky Debris Jam | | Other Feature | | Roadway | | Tributary Outlet |
| | Pedestrian Bridge | | | | Waterfall / Cascade | | County Boundary | | |
| | Free Span Bridge | | | | Low Water Crossing | | Municipal Boundary | | |
| | | | | | | | Wetland Boundary | | |

Menomonee River Watershed Fish Passage Survey: Barriers & Potential Habitat Connectivity

Little Menomonee Creek (WBIC 17900) - Map 2

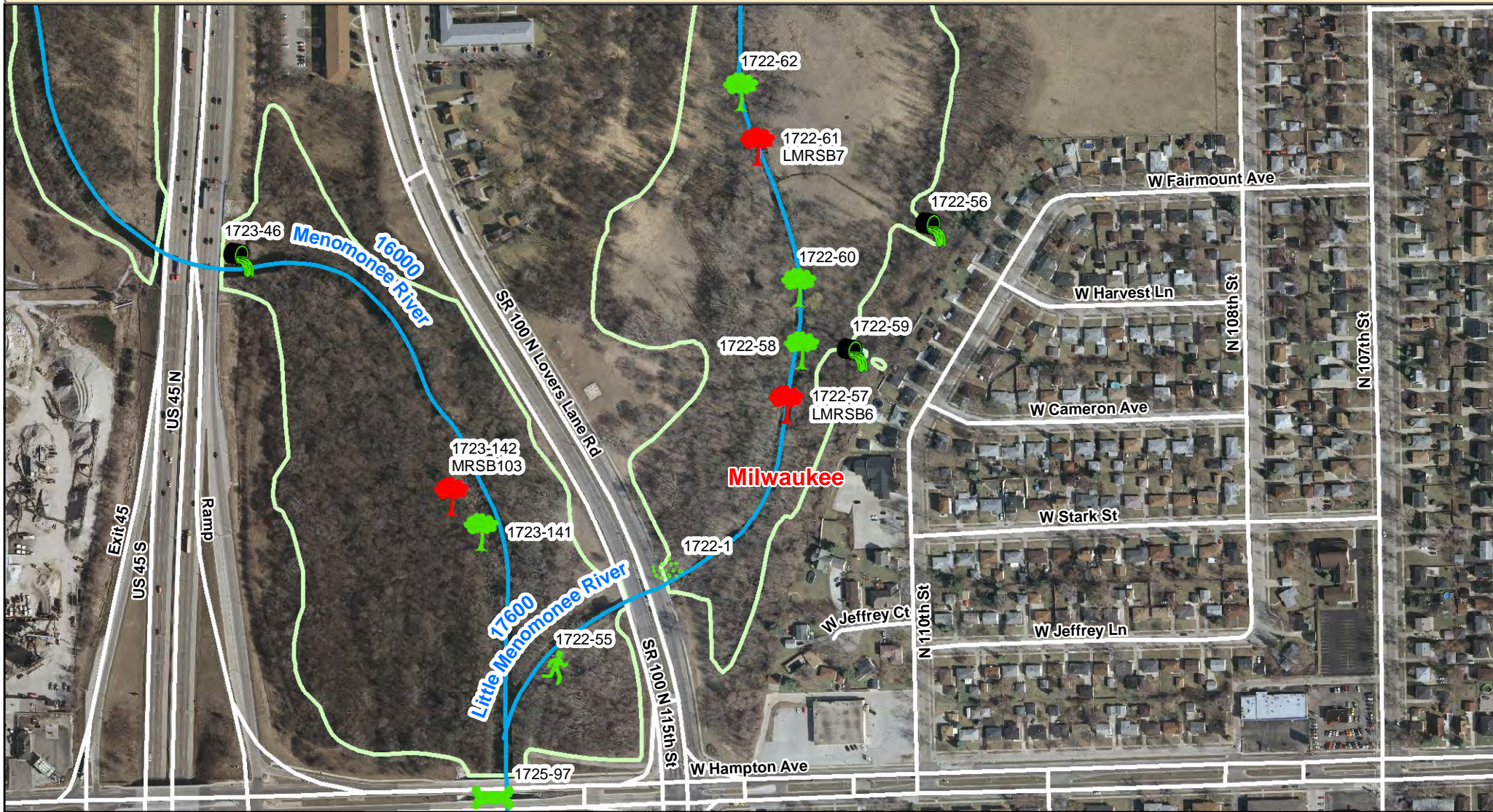


Red (Barrier) Green (Passable)

- | | | | | | | | | | |
|--|--------------------|--|---------------------|--|---------------------|--|------------------|--|-------------------------|
| | Road Culvert | | Woody Debris Jam | | Dam | | Railroad | | Storm Ditch/Pond Outlet |
| | Railroad Culvert | | Sediment Debris Jam | | Fence | | Stream | | Wetland Outlet |
| | Golf Course Bridge | | Rocky Debris Jam | | Other Feature | | Roadway | | Tributary Outlet |
| | Pedestrian Bridge | | | | Waterfall / Cascade | | County Boundary | | Municipal Boundary |
| | Free Span Bridge | | | | Low Water Crossing | | Wetland Boundary | | |

Menomonee River Watershed Fish Passage Survey: Barriers & Potential Habitat Connectivity

Little Menomonee River (WBIC 17600) - Map 1



Red (Barrier) Green (Passable)

- | | | | | | | | | | |
|--|--------------------|--|---------------------|--|--------------------|--|-----------------|--|-------------------------|
| | Road Culvert | | Woody Debris Jam | | Dam | | Railroad | | Storm Ditch/Pond Outlet |
| | Railroad Culvert | | Sediment Debris Jam | | Fence | | Stream | | Wetland Outlet |
| | Golf Course Bridge | | Rocky Debris Jam | | Other Feature | | Roadway | | Tributary Outlet |
| | Pedestrian Bridge | | Waterfall / Cascade | | Low Water Crossing | | County Boundary | | |
| | Free Span Bridge | | Municipal Boundary | | Wetland Boundary | | | | |

Menomonee River Watershed Fish Passage Survey: Barriers & Potential Habitat Connectivity

Little Menomonee River (WBIC 17600) - Map 2

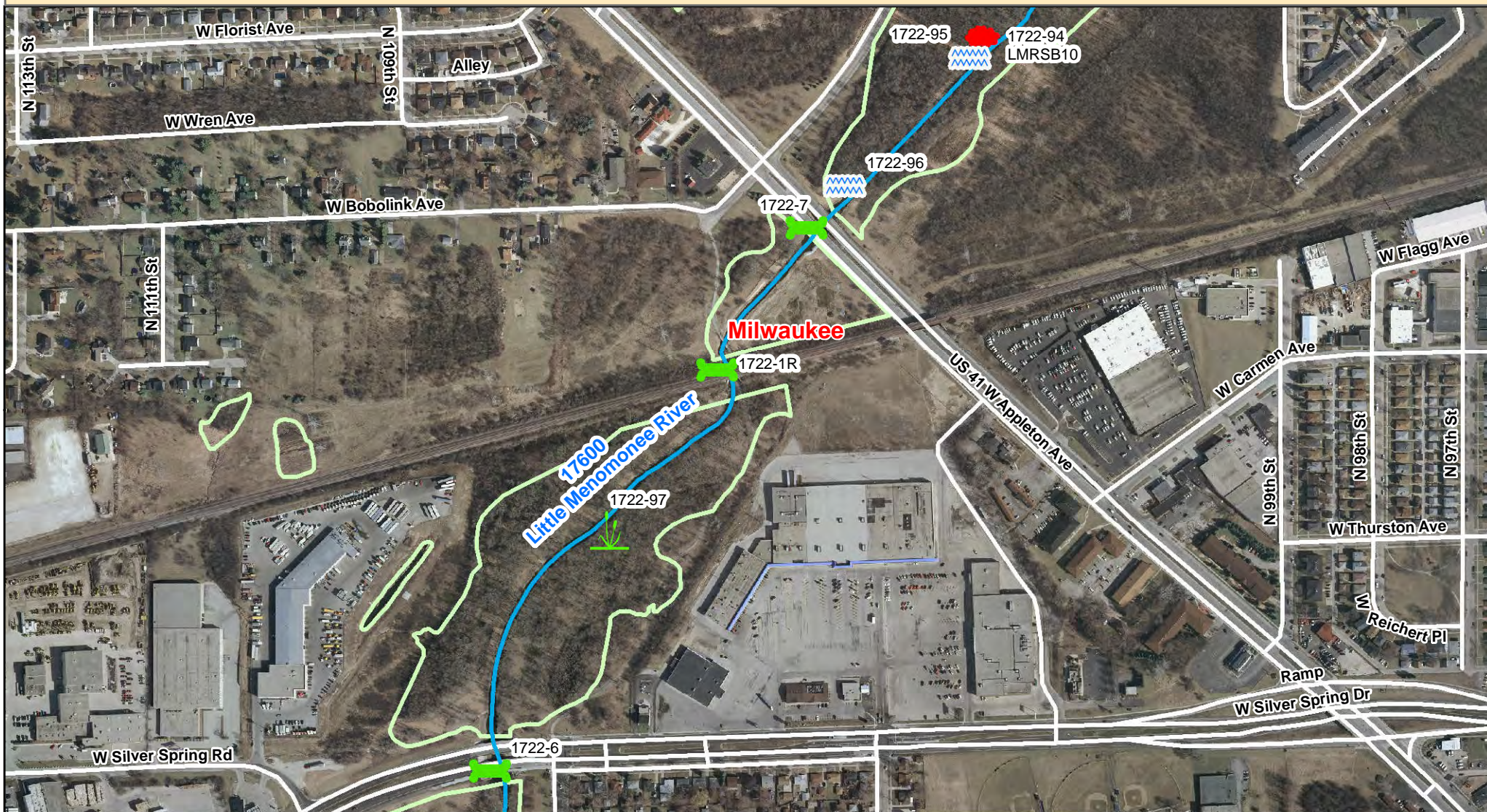


Red (Barrier) Green (Passable)

- | | | | | | | | | | |
|--|--------------------|--|---------------------|--|---------------------|--|--------------------|--|-------------------------|
| | Road Culvert | | Woody Debris Jam | | Dam | | Railroad | | Storm Ditch/Pond Outlet |
| | Railroad Culvert | | Sediment Debris Jam | | Fence | | Stream | | Wetland Outlet |
| | Golf Course Bridge | | Rocky Debris Jam | | Other Feature | | Roadway | | Tributary Outlet |
| | Pedestrian Bridge | | | | Waterfall / Cascade | | County Boundary | | |
| | Free Span Bridge | | | | Low Water Crossing | | Municipal Boundary | | |
| | | | | | | | Wetland Boundary | | |

Menomonee River Watershed Fish Passage Survey: Barriers & Potential Habitat Connectivity

Little Menomonee River (WBIC 17600) - Map 3



Red (Barrier) Green (Passable)

- | | | | | | | | | | |
|--|--------------------|--|---------------------|--|------------------|--|--------------------|--|-------------------------|
| | Road Culvert | | Woody Debris Jam | | Dam | | Railroad | | Storm Ditch/Pond Outlet |
| | Railroad Culvert | | Sediment Debris Jam | | Fence | | Stream | | Wetland Outlet |
| | Golf Course Bridge | | Rocky Debris Jam | | Other Feature | | Roadway | | Tributary Outlet |
| | Pedestrian Bridge | | Waterfall / Cascade | | County Boundary | | Municipal Boundary | | |
| | Free Span Bridge | | Low Water Crossing | | Wetland Boundary | | | | |

Menomonee River Watershed Fish Passage Survey: Barriers & Potential Habitat Connectivity

Little Menomonee River (WBIC 17600) - Map 4



Red (Barrier) Green (Passable)

- | | | | | | | | | | |
|--|--------------------|--|---------------------|--|---------------------|--|--------------------|--|-------------------------|
| | Road Culvert | | Woody Debris Jam | | Dam | | Railroad | | Storm Ditch/Pond Outlet |
| | Railroad Culvert | | Sediment Debris Jam | | Fence | | Stream | | Wetland Outlet |
| | Golf Course Bridge | | Rocky Debris Jam | | Other Feature | | Roadway | | Tributary Outlet |
| | Pedestrian Bridge | | | | Waterfall / Cascade | | County Boundary | | |
| | Free Span Bridge | | | | Low Water Crossing | | Municipal Boundary | | |
| | | | | | | | Wetland Boundary | | |

Menomonee River Watershed Fish Passage Survey: Barriers & Potential Habitat Connectivity

Little Menomonee River (WBIC 17600) - Map 5



Red (Barrier) Green (Passable)

- | | | | | | | | | | |
|--|--------------------|--|---------------------|--|---------------------|--|------------------|--|-------------------------|
| | Road Culvert | | Woody Debris Jam | | Dam | | Railroad | | Storm Ditch/Pond Outlet |
| | Railroad Culvert | | Sediment Debris Jam | | Fence | | Stream | | Wetland Outlet |
| | Golf Course Bridge | | Rocky Debris Jam | | Other Feature | | Roadway | | Tributary Outlet |
| | Pedestrian Bridge | | | | Waterfall / Cascade | | County Boundary | | Municipal Boundary |
| | Free Span Bridge | | | | Low Water Crossing | | Wetland Boundary | | |

Menomonee River Watershed Fish Passage Survey: Barriers & Potential Habitat Connectivity

Little Menomonee River (WBIC 17600) - Map 6



Red (Barrier) Green (Passable)






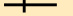




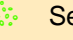

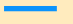




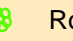


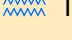

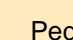






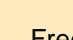

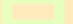

- | | | | | | | | | | |
|--|--------------------|--|---------------------|--|------------------|--|--------------------|--|-------------------------|
| | Road Culvert | | Woody Debris Jam | | Dam | | Railroad | | Storm Ditch/Pond Outlet |
| | Railroad Culvert | | Sediment Debris Jam | | Fence | | Stream | | Wetland Outlet |
| | Golf Course Bridge | | Rocky Debris Jam | | Other Feature | | Roadway | | Tributary Outlet |
| | Pedestrian Bridge | | Waterfall / Cascade | | County Boundary | | Municipal Boundary | | |
| | Free Span Bridge | | Low Water Crossing | | Wetland Boundary | | | | |

Menomonee River Watershed Fish Passage Survey: Barriers & Potential Habitat Connectivity

Little Menomonee River (WBIC 17600) - Map 7

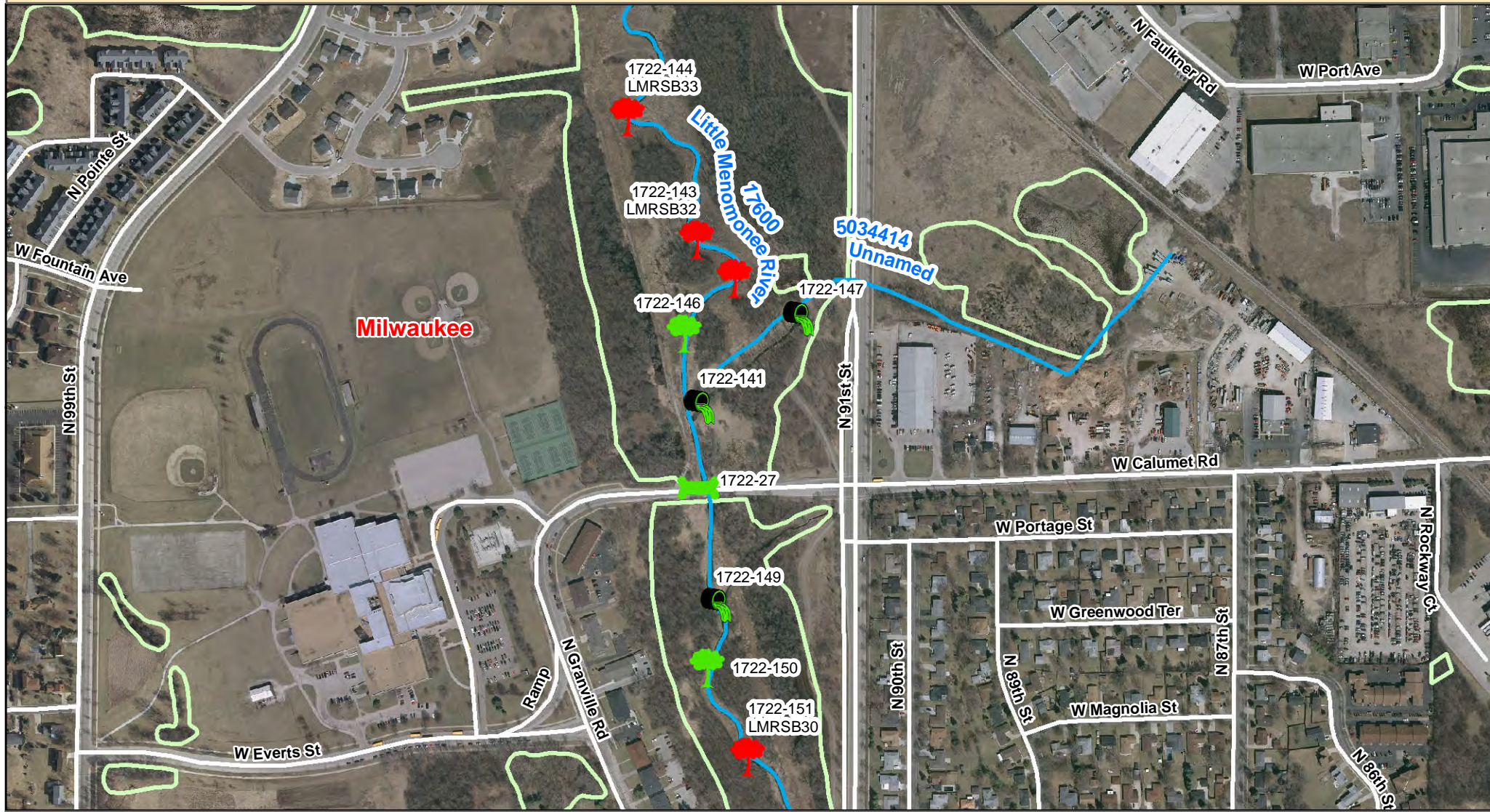


Red (Barrier) Green (Passable)

- | | | | | | | | | | | | |
|--|---|--------------------|---|---|---------------------|---|---------------------|---|------------------|---|-------------------------|
|  |  | Road Culvert |  |  | Woody Debris Jam |  | Dam |  | Railroad |  | Storm Ditch/Pond Outlet |
|  |  | Railroad Culvert |  |  | Sediment Debris Jam |  | Fence |  | Stream |  | Wetland Outlet |
|  |  | Golf Course Bridge |  |  | Rocky Debris Jam |  | Other Feature |  | Roadway |  | Tributary Outlet |
|  |  | Pedestrian Bridge |  |  | |  | Waterfall / Cascade |  | County Boundary |  | Municipal Boundary |
|  |  | Free Span Bridge | | | |  | Low Water Crossing |  | Wetland Boundary |  | |

Menomonee River Watershed Fish Passage Survey: Barriers & Potential Habitat Connectivity

Little Menomonee River (WBIC 17600) - Map 8



Red (Barrier) Green (Passable)

- | | | | | | | | | | |
|--|--------------------|--|---------------------|--|---------------------|--|--------------------|--|-------------------------|
| | Road Culvert | | Woody Debris Jam | | Dam | | Railroad | | Storm Ditch/Pond Outlet |
| | Railroad Culvert | | Sediment Debris Jam | | Fence | | Stream | | Wetland Outlet |
| | Golf Course Bridge | | Rocky Debris Jam | | Other Feature | | Roadway | | Tributary Outlet |
| | Pedestrian Bridge | | | | Waterfall / Cascade | | County Boundary | | |
| | Free Span Bridge | | | | Low Water Crossing | | Municipal Boundary | | |
| | | | | | | | Wetland Boundary | | |

Menomonee River Watershed Fish Passage Survey: Barriers & Potential Habitat Connectivity

Little Menomonee River (WBIC 17600) - Map 9

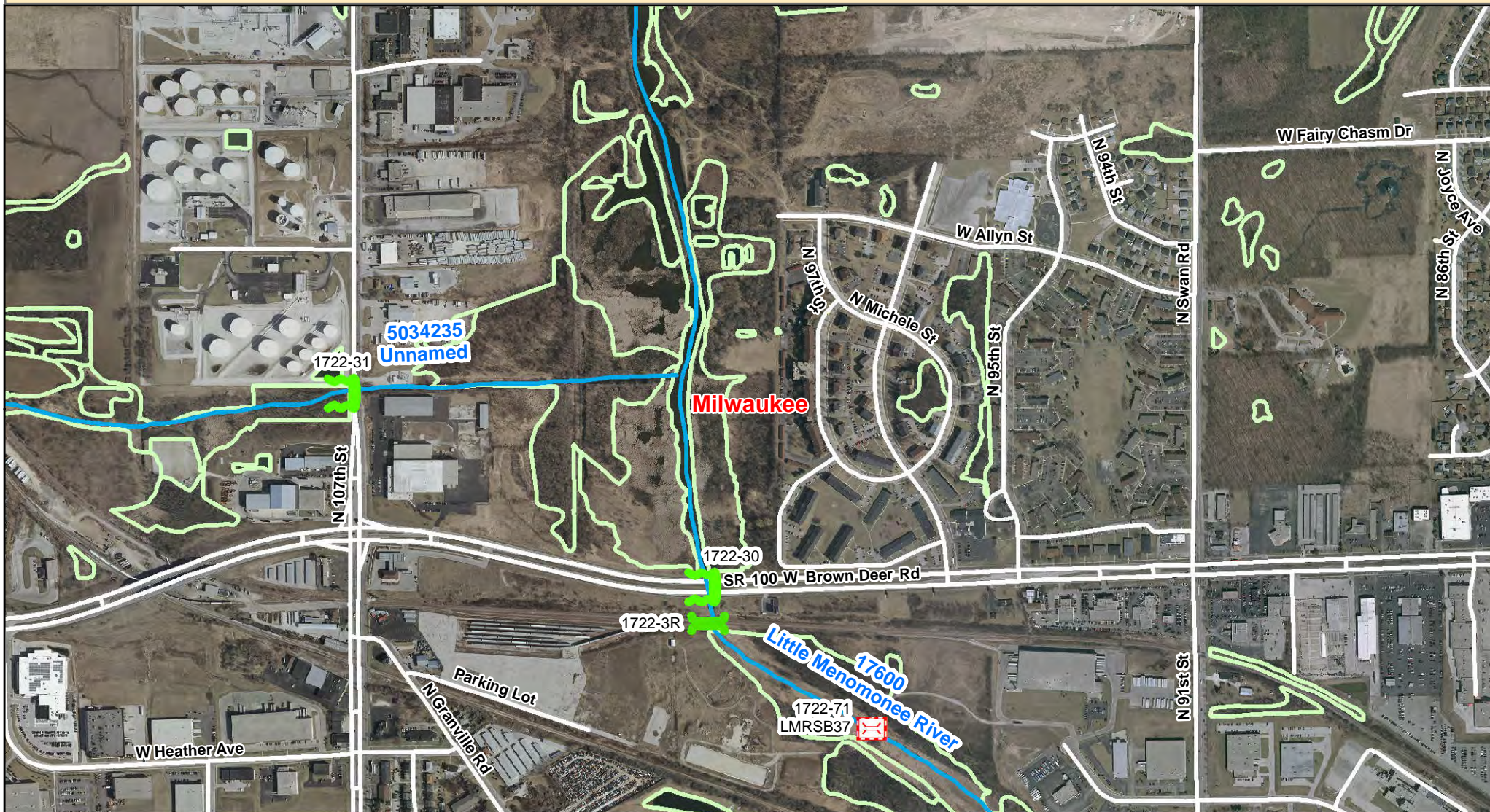


Red (Barrier) Green (Passable)

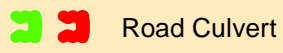
- | | | | | | | | | | | | |
|--|--|--------------------|--|---------------------|---------------------|--------------------|---------------|------------------|----------|------------------|-------------------------|
| | | Road Culvert | | | Woody Debris Jam | | Dam | | Railroad | | Storm Ditch/Pond Outlet |
| | | Railroad Culvert | | | Sediment Debris Jam | | Fence | | Stream | | Wetland Outlet |
| | | Golf Course Bridge | | | Rocky Debris Jam | | Other Feature | | Roadway | | County Boundary |
| | | Pedestrian Bridge | | Waterfall / Cascade | | Municipal Boundary | | Wetland Boundary | | Tributary Outlet | |
| | | Free Span Bridge | | Low Water Crossing | | | | | | | |

Menomonee River Watershed Fish Passage Survey: Barriers & Potential Habitat Connectivity

Little Menomonee River (WBIC 17600) - Map 10



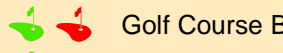
Red (Barrier) Green (Passable)



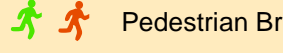
Road Culvert



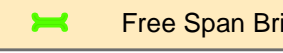
Railroad Culvert



Golf Course Bridge



Pedestrian Bridge



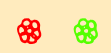
Free Span Bridge



Woody Debris Jam



Sediment Debris Jam



Rocky Debris Jam



Dam



Fence



Other Feature



Waterfall / Cascade



Low Water Crossing

Railroad

Stream

Roadway

County Boundary

Municipal Boundary

Wetland Boundary



Storm Ditch/Pond Outlet



Wetland Outlet

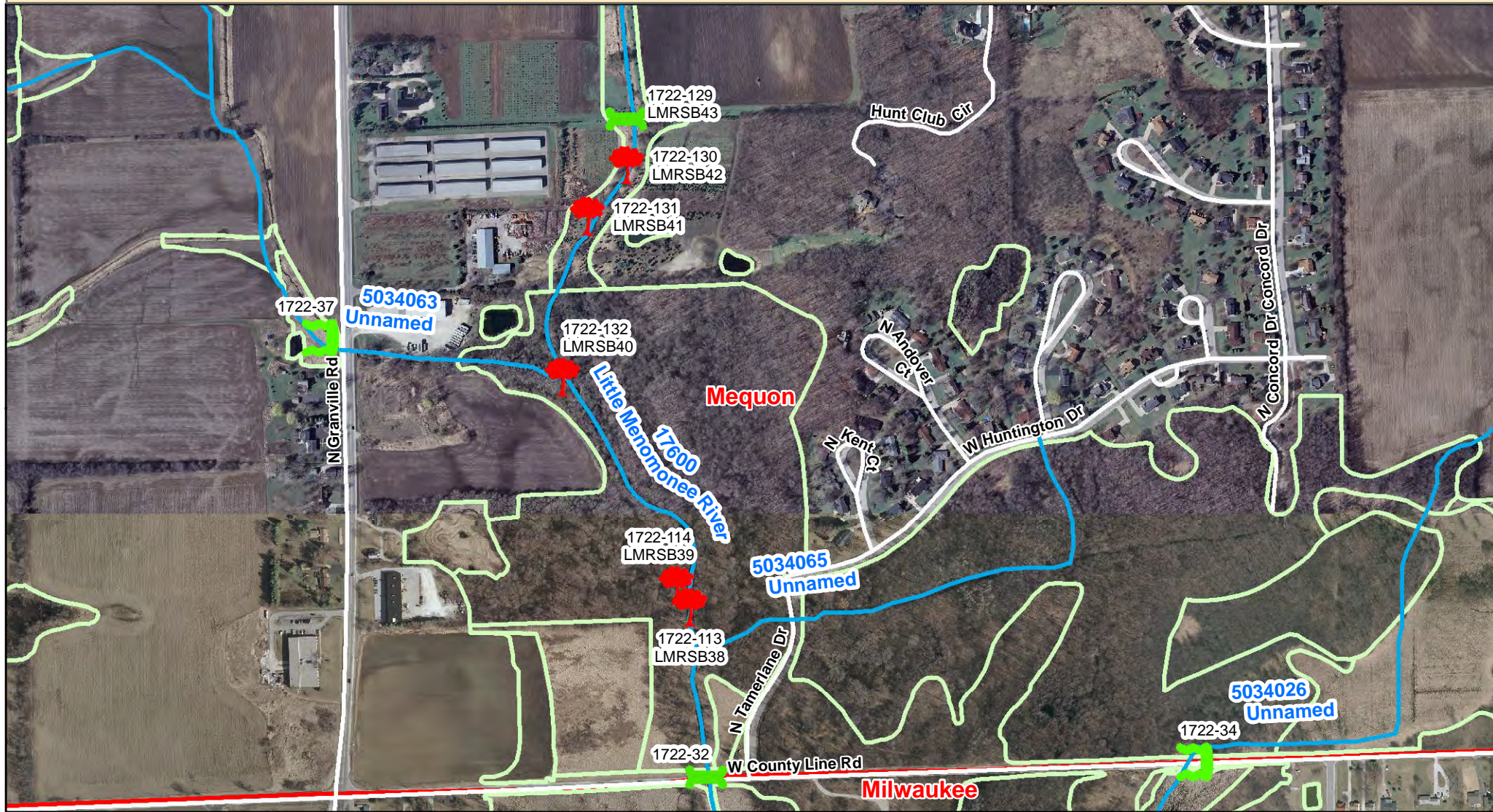


Tributary Outlet



Menomonee River Watershed Fish Passage Survey: Barriers & Potential Habitat Connectivity

Little Menomonee River (WBIC 17600) - Map 11

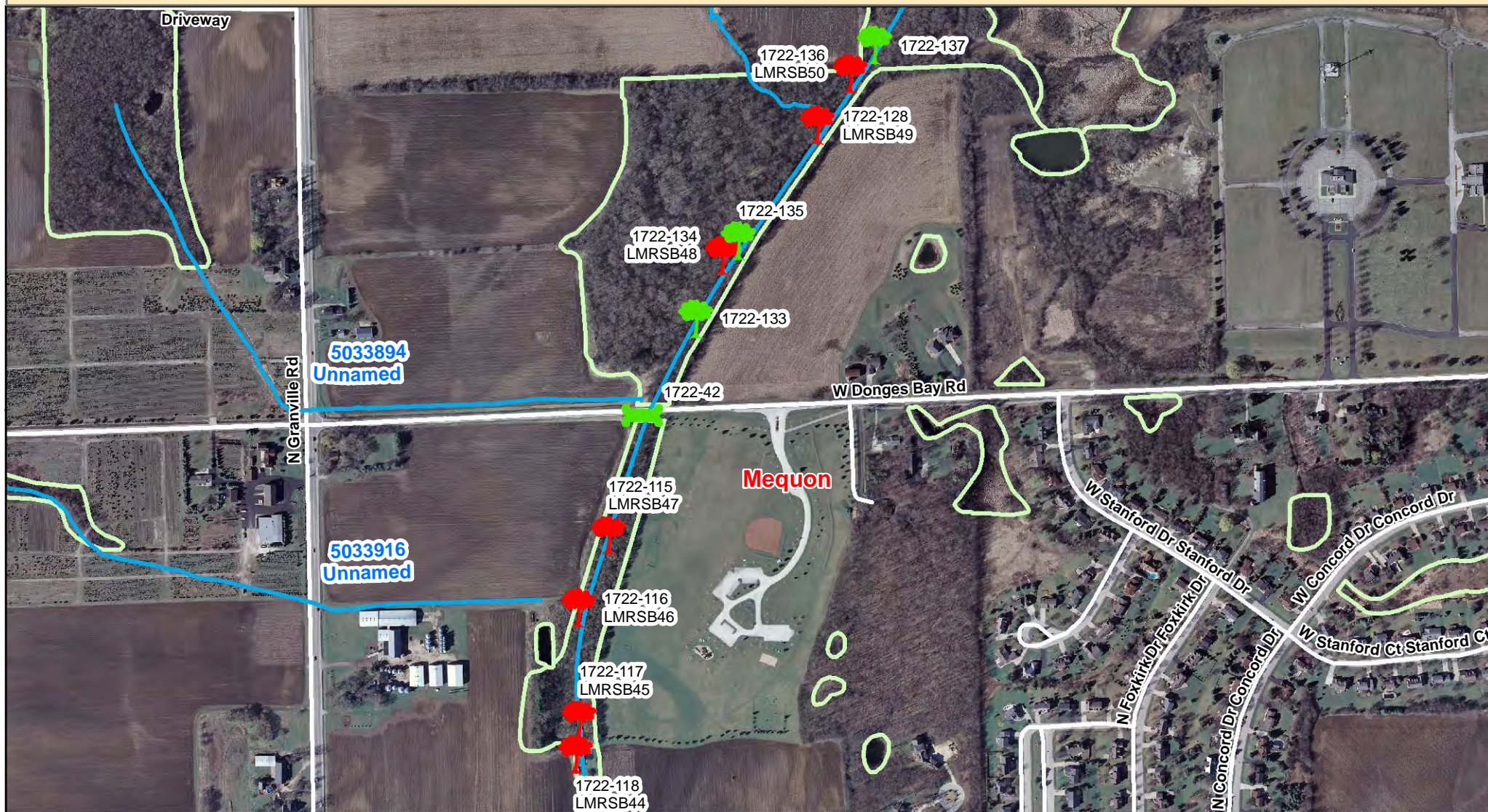


Red (Barrier) Green (Passable)

- | | | | | | | | | | |
|--|--------------------|--|---------------------|--|---------------------|--|--------------------|--|-------------------------|
| | Road Culvert | | Woody Debris Jam | | Dam | | Railroad | | Storm Ditch/Pond Outlet |
| | Railroad Culvert | | Sediment Debris Jam | | Fence | | Stream | | Wetland Outlet |
| | Golf Course Bridge | | Rocky Debris Jam | | Other Feature | | Roadway | | Tributary Outlet |
| | Pedestrian Bridge | | | | Waterfall / Cascade | | County Boundary | | |
| | Free Span Bridge | | | | Low Water Crossing | | Municipal Boundary | | |
| | | | | | | | Wetland Boundary | | |

Menomonee River Watershed Fish Passage Survey: Barriers & Potential Habitat Connectivity

Little Menomonee River (WBIC 17600) - Map 12



Red (Barrier) Green (Passable)

- | | | | | | | | | | |
|--|--------------------|--|---------------------|--|---------------------|--|--------------------|--|-------------------------|
| | Road Culvert | | Woody Debris Jam | | Dam | | Railroad | | Storm Ditch/Pond Outlet |
| | Railroad Culvert | | Sediment Debris Jam | | Fence | | Stream | | Wetland Outlet |
| | Golf Course Bridge | | Rocky Debris Jam | | Other Feature | | Roadway | | Tributary Outlet |
| | Pedestrian Bridge | | | | Waterfall / Cascade | | County Boundary | | |
| | Free Span Bridge | | | | Low Water Crossing | | Municipal Boundary | | |
| | | | | | | | Wetland Boundary | | |