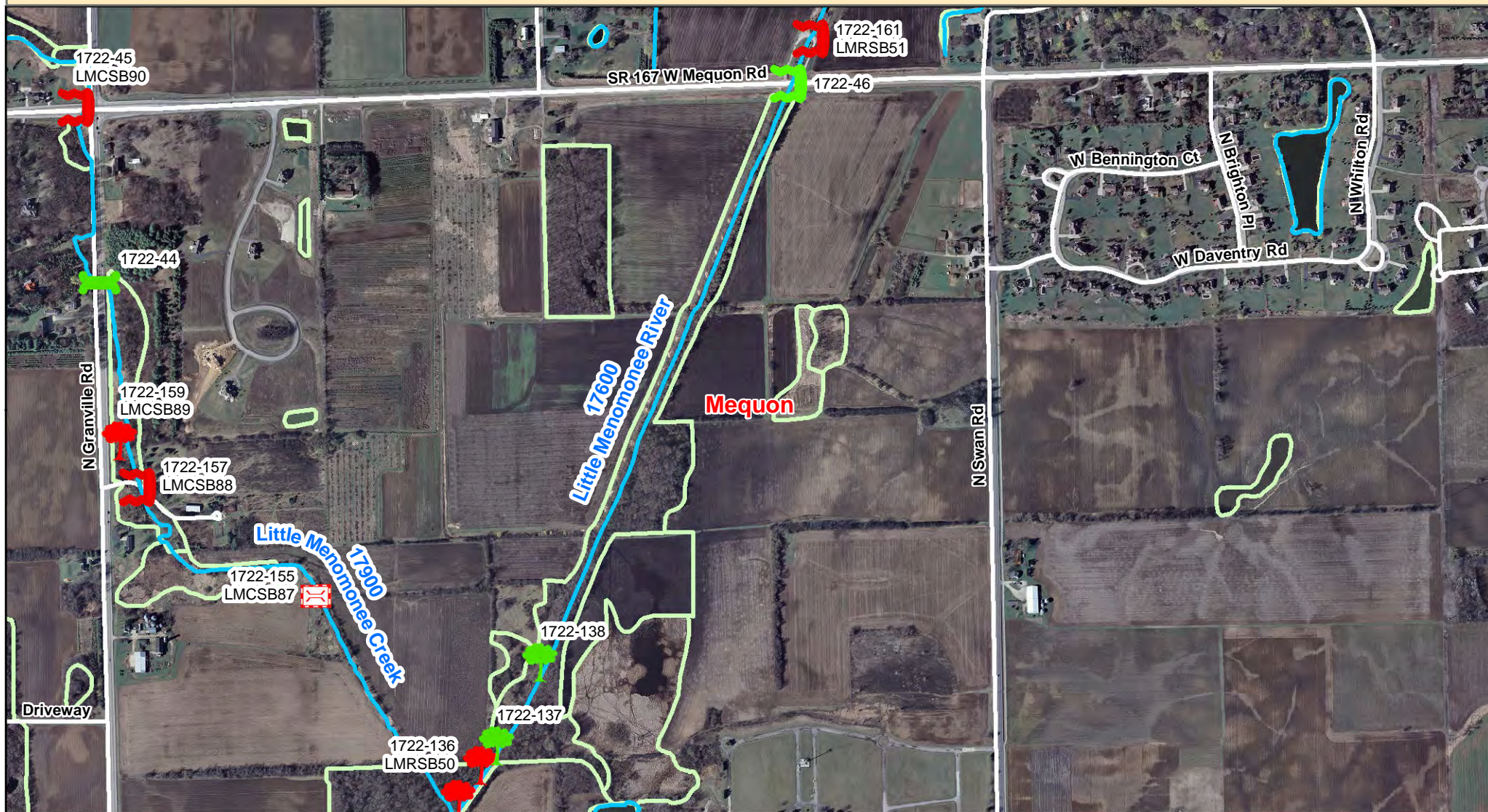


Menomonee River Watershed Fish Passage Survey: Barriers & Potential Habitat Connectivity

Little Menomonee River (WBIC 17600) - Map 13

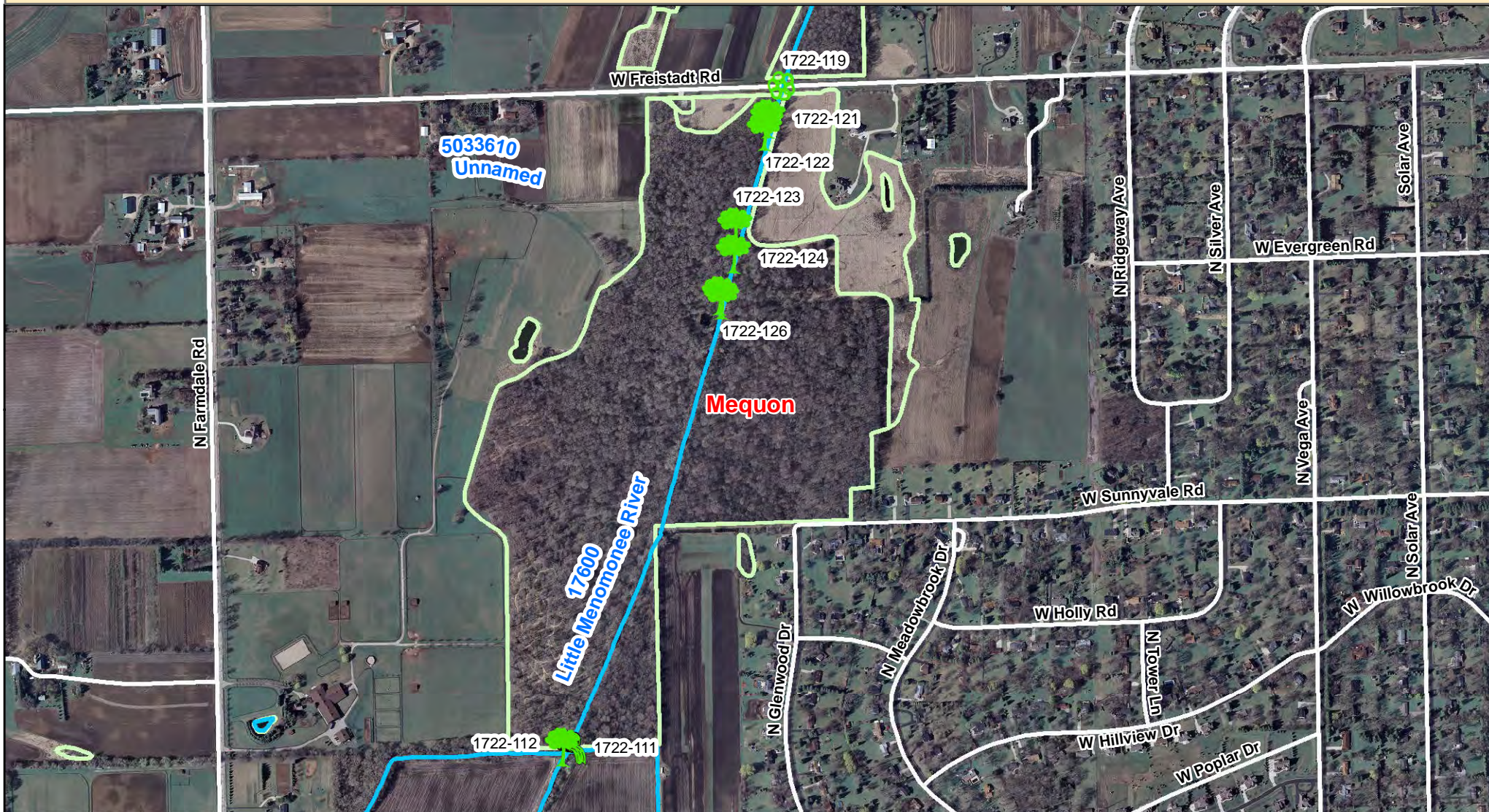


Red (Barrier) Green (Passable)

- | | | | | | | |
|--|--|--|--|--|--|--|
| | | | | | | |
| | | | | | | |
| | | | | | | |
| | | | | | | |
| | | | | | | |

Menomonee River Watershed Fish Passage Survey: Barriers & Potential Habitat Connectivity

Little Menomonee River (WBIC 17600) - Map 14

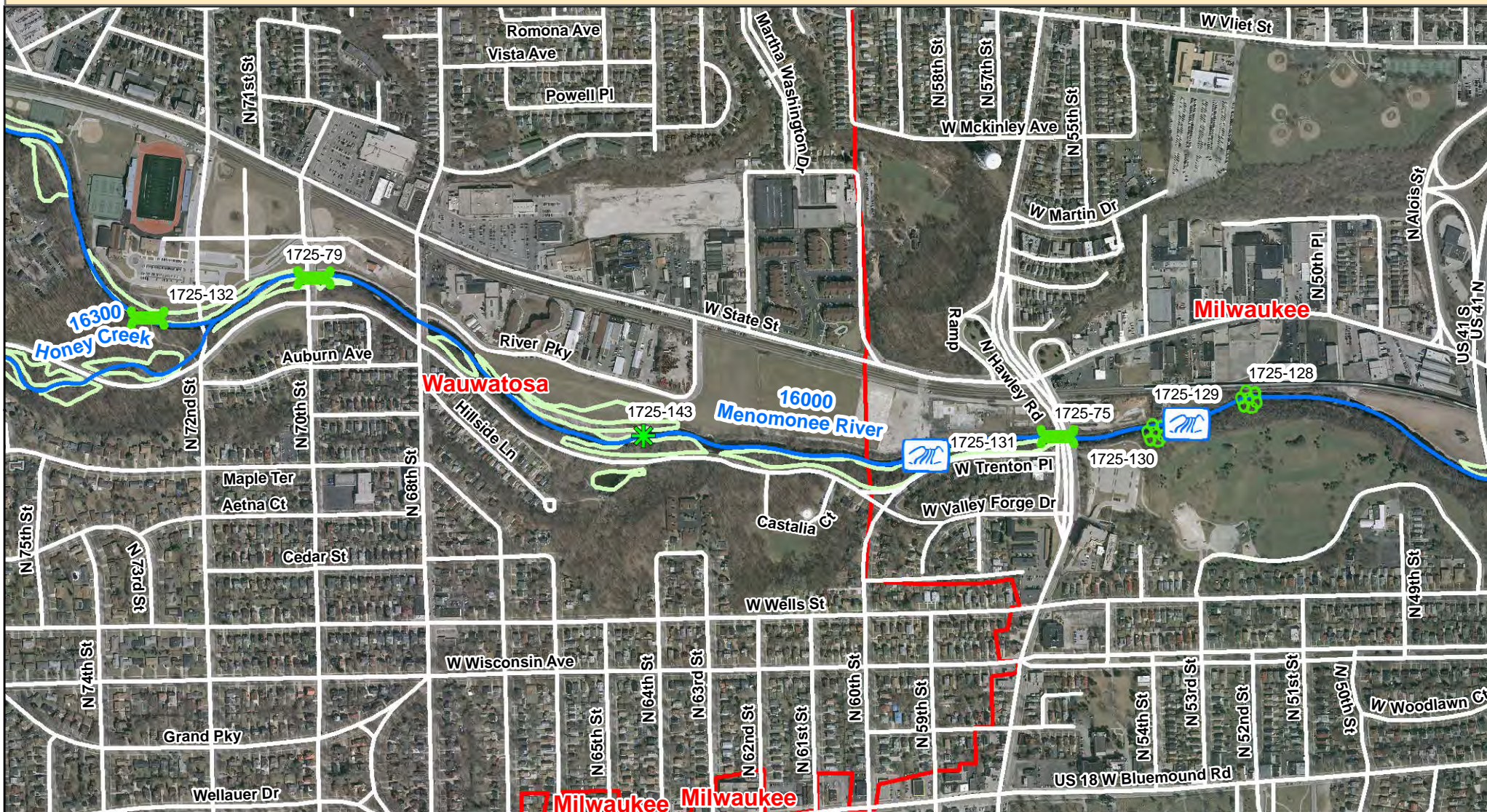


Red (Barrier) Green (Passable)

- | | | | | | | | | | |
|--|--------------------|--|---------------------|--|---------------------|--|--------------------|--|-------------------------|
| | Road Culvert | | Woody Debris Jam | | Dam | | Railroad | | Storm Ditch/Pond Outlet |
| | Railroad Culvert | | Sediment Debris Jam | | Fence | | Stream | | Wetland Outlet |
| | Golf Course Bridge | | Rocky Debris Jam | | Other Feature | | Roadway | | Tributary Outlet |
| | Pedestrian Bridge | | | | Waterfall / Cascade | | County Boundary | | |
| | Free Span Bridge | | | | Low Water Crossing | | Municipal Boundary | | |
| | | | | | | | Wetland Boundary | | |

Menomonee River Watershed Fish Passage Survey: Barriers & Potential Habitat Connectivity

Menomonee River (WBIC 16000) - Map 1

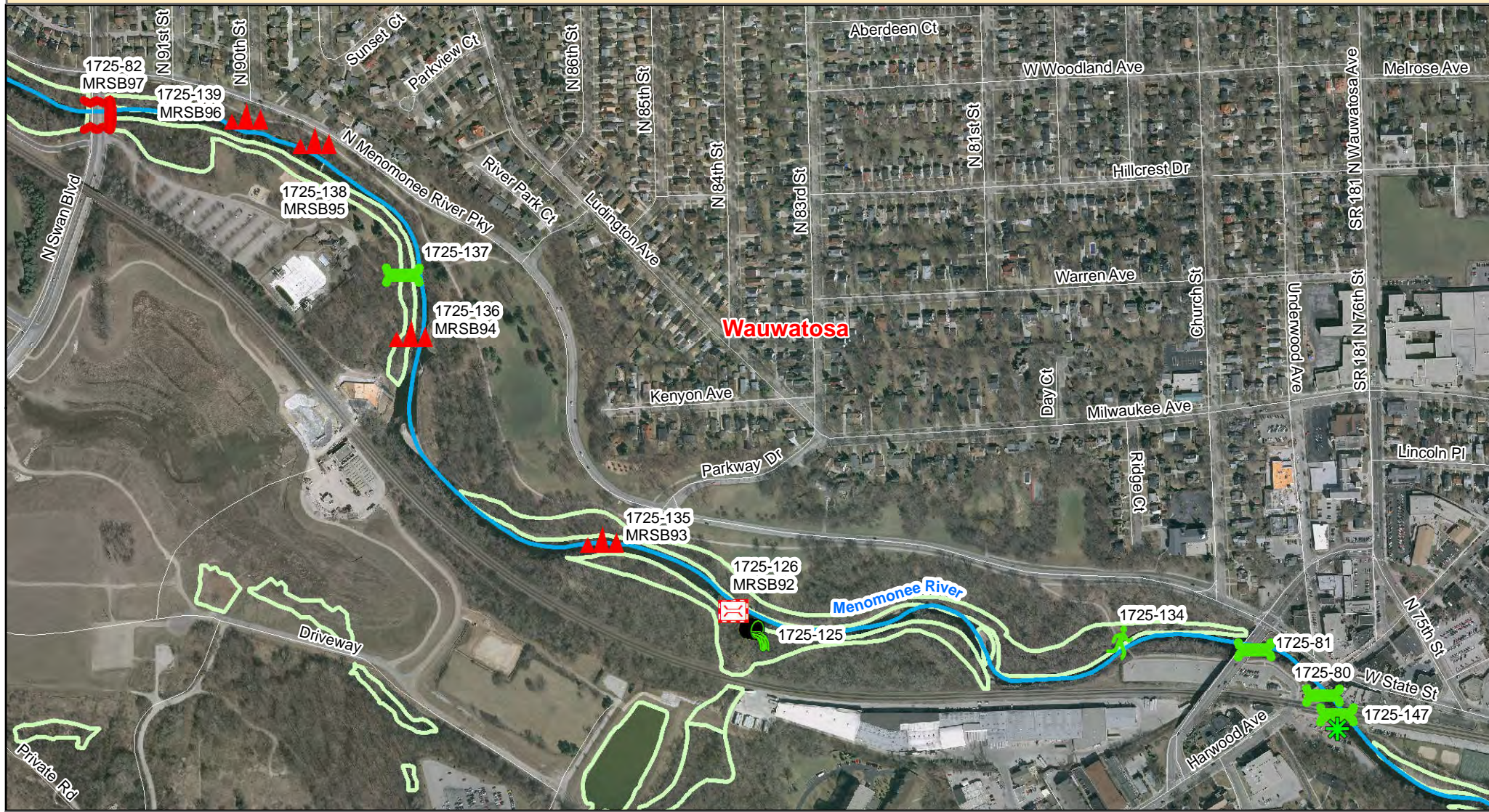


Red (Barrier) Green (Passable)

- | | | | | | | | | | |
|--|--------------------|--|---------------------|--|---------------------|--|--------------------|--|-------------------------|
| | Road Culvert | | Woody Debris Jam | | Dam | | Railroad | | Storm Ditch/Pond Outlet |
| | Railroad Culvert | | Sediment Debris Jam | | Fence | | Stream | | Wetland Outlet |
| | Golf Course Bridge | | Rocky Debris Jam | | Other Feature | | Roadway | | Tributary Outlet |
| | Pedestrian Bridge | | | | Waterfall / Cascade | | County Boundary | | |
| | Free Span Bridge | | | | Low Water Crossing | | Municipal Boundary | | |
| | | | | | | | Wetland Boundary | | |

Menomonee River Watershed Fish Passage Survey: Barriers & Potential Habitat Connectivity

Menomonee River (WBIC 16000) - Map 2

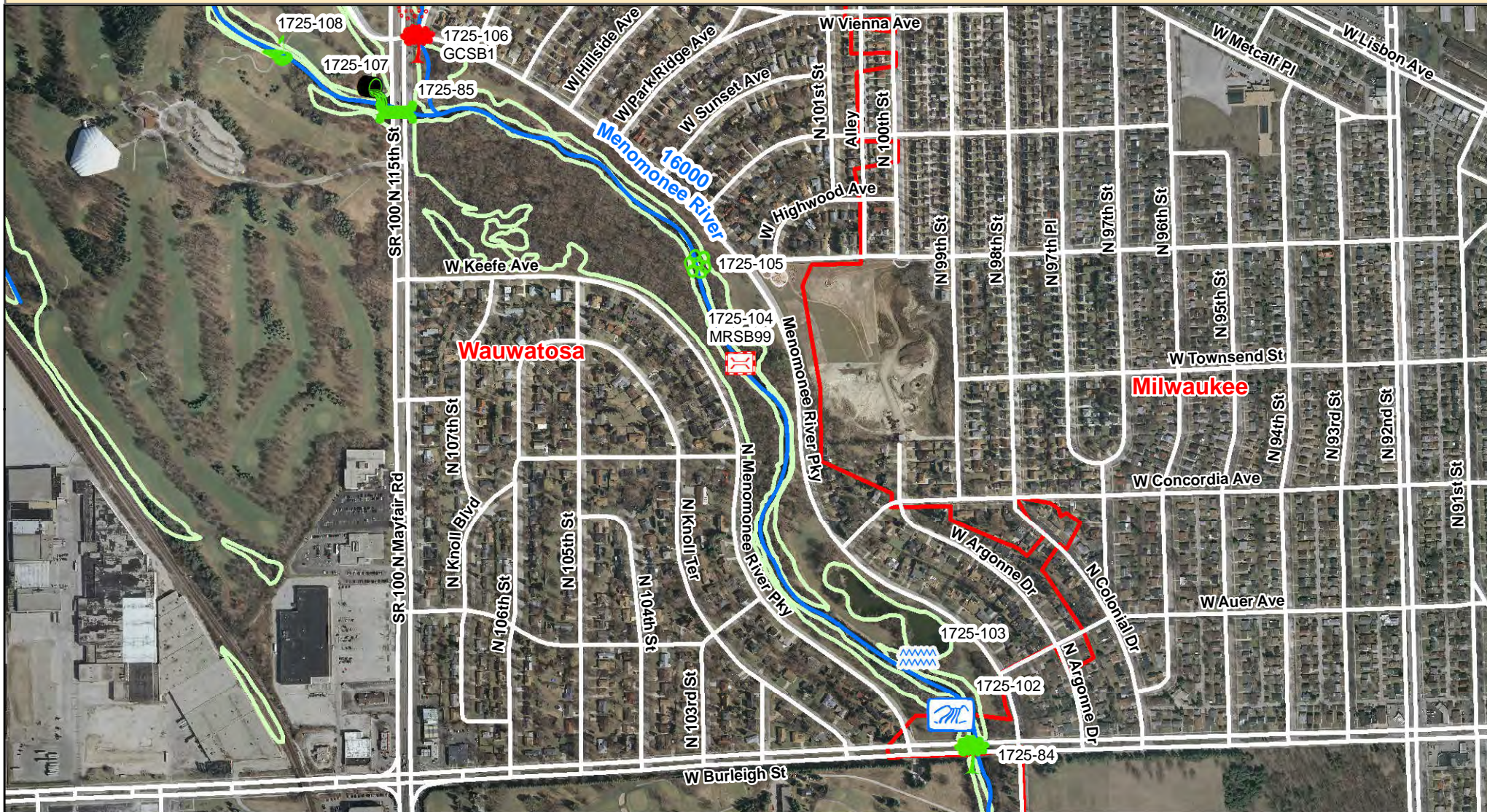


Red (Barrier) Green (Passable)

- | | | | | | | | | | |
|--|--------------------|--|---------------------|--|---------------------|--|------------------|--|-------------------------|
| | Road Culvert | | Woody Debris Jam | | Dam | | Railroad | | Storm Ditch/Pond Outlet |
| | Railroad Culvert | | Sediment Debris Jam | | Fence | | Stream | | Wetland Outlet |
| | Golf Course Bridge | | Rocky Debris Jam | | Other Feature | | Roadway | | Tributary Outlet |
| | Pedestrian Bridge | | Low Flow Barrier | | Waterfall / Cascade | | County Boundary | | Municipal Boundary |
| | Free Span Bridge | | Enclosed Conduit | | Low Water Crossing | | Wetland Boundary | | |

Menomonee River Watershed Fish Passage Survey: Barriers & Potential Habitat Connectivity

Menomonee River (WBIC 16000) - Map 4

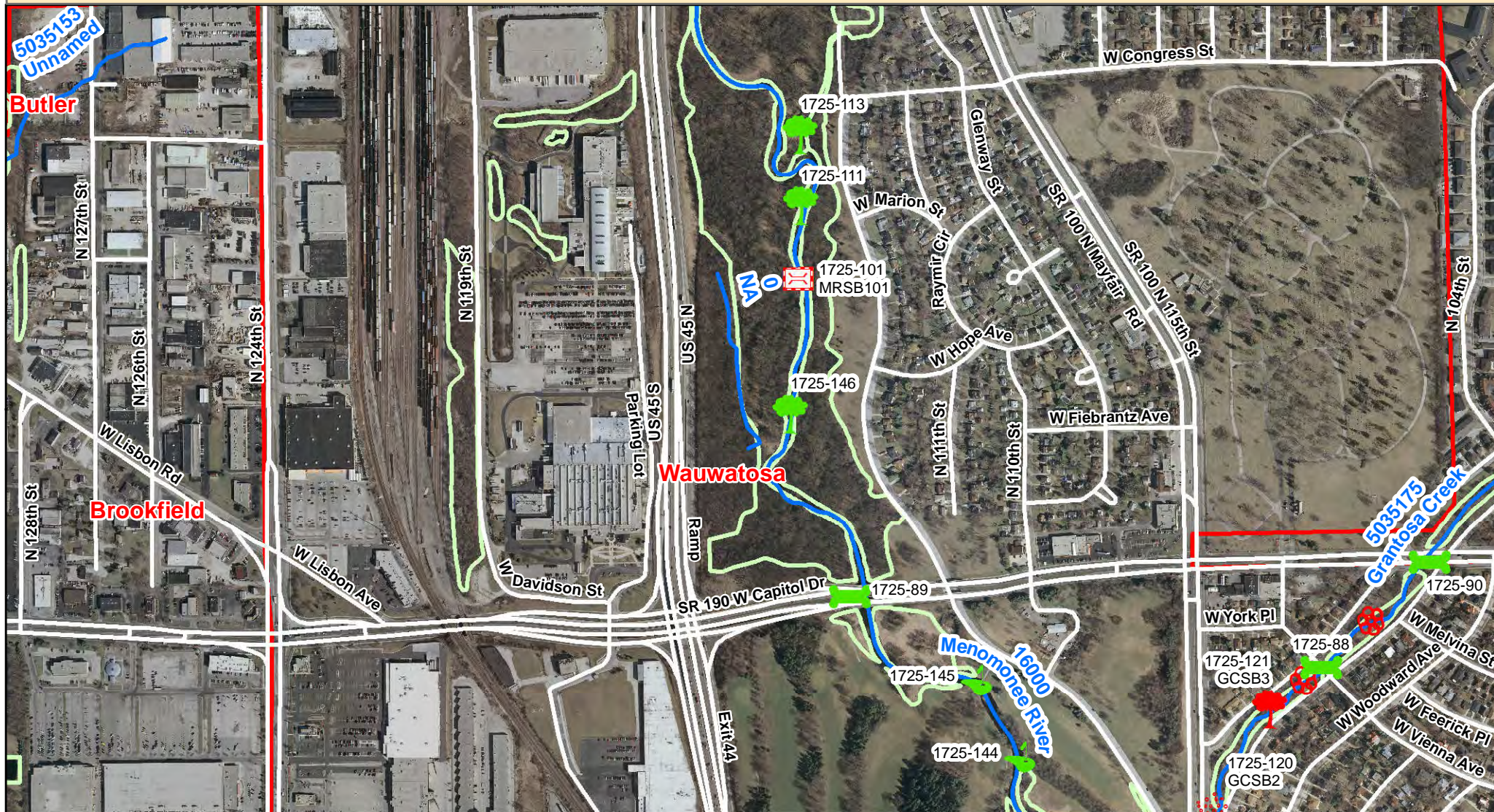


Red (Barrier) Green (Passable)

- | | | | | | | | | | |
|--|--------------------|--|---------------------|--|---------------------|--|------------------|--|-------------------------|
| | Road Culvert | | Woody Debris Jam | | Dam | | Railroad | | Storm Ditch/Pond Outlet |
| | Railroad Culvert | | Sediment Debris Jam | | Fence | | Stream | | Wetland Outlet |
| | Golf Course Bridge | | Rocky Debris Jam | | Other Feature | | Roadway | | Tributary Outlet |
| | Pedestrian Bridge | | | | Waterfall / Cascade | | County Boundary | | Municipal Boundary |
| | Free Span Bridge | | | | Low Water Crossing | | Wetland Boundary | | |

Menomonee River Watershed Fish Passage Survey: Barriers & Potential Habitat Connectivity

Menomonee River (WBIC 16000) - Map 5



Red (Barrier) Green (Passable)

- | | | | | | | | | | |
|--|--------------------|--|---------------------|--|------------------|--|--------------------|--|-------------------------|
| | Road Culvert | | Woody Debris Jam | | Dam | | Railroad | | Storm Ditch/Pond Outlet |
| | Railroad Culvert | | Sediment Debris Jam | | Fence | | Stream | | Wetland Outlet |
| | Golf Course Bridge | | Rocky Debris Jam | | Other Feature | | Roadway | | Tributary Outlet |
| | Pedestrian Bridge | | Waterfall / Cascade | | County Boundary | | Municipal Boundary | | |
| | Free Span Bridge | | Low Water Crossing | | Wetland Boundary | | | | |

Menomonee River Watershed Fish Passage Survey: Barriers & Potential Habitat Connectivity

Menomonee River (WBIC 16000) - Map 6



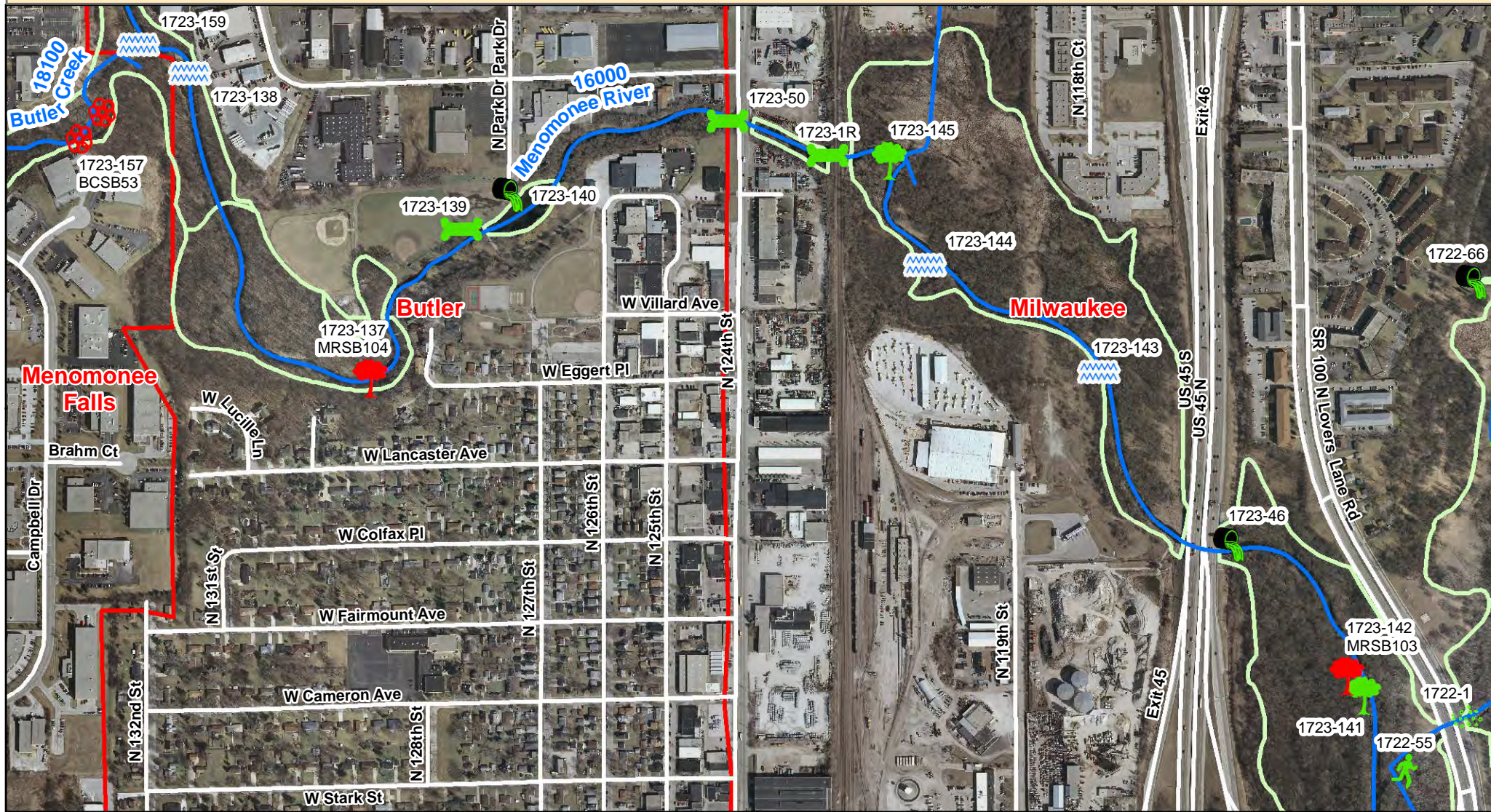
Red (Barrier) Green (Passable)

- | | | | | | | | | | |
|--|--------------------|--|---------------------|--|--------------------|--|------------------|--|-------------------------|
| | Road Culvert | | Woody Debris Jam | | Dam | | Railroad | | Storm Ditch/Pond Outlet |
| | Railroad Culvert | | Sediment Debris Jam | | Fence | | Stream | | Wetland Outlet |
| | Golf Course Bridge | | Rocky Debris Jam | | Other Feature | | Roadway | | Tributary Outlet |
| | Pedestrian Bridge | | Waterfall / Cascade | | Low Water Crossing | | County Boundary | | Municipal Boundary |
| | Free Span Bridge | | Wetland Boundary | | | | Wetland Boundary | | |



Menomonee River Watershed Fish Passage Survey: Barriers & Potential Habitat Connectivity

Menomonee River (WBIC 16000) - Map 7

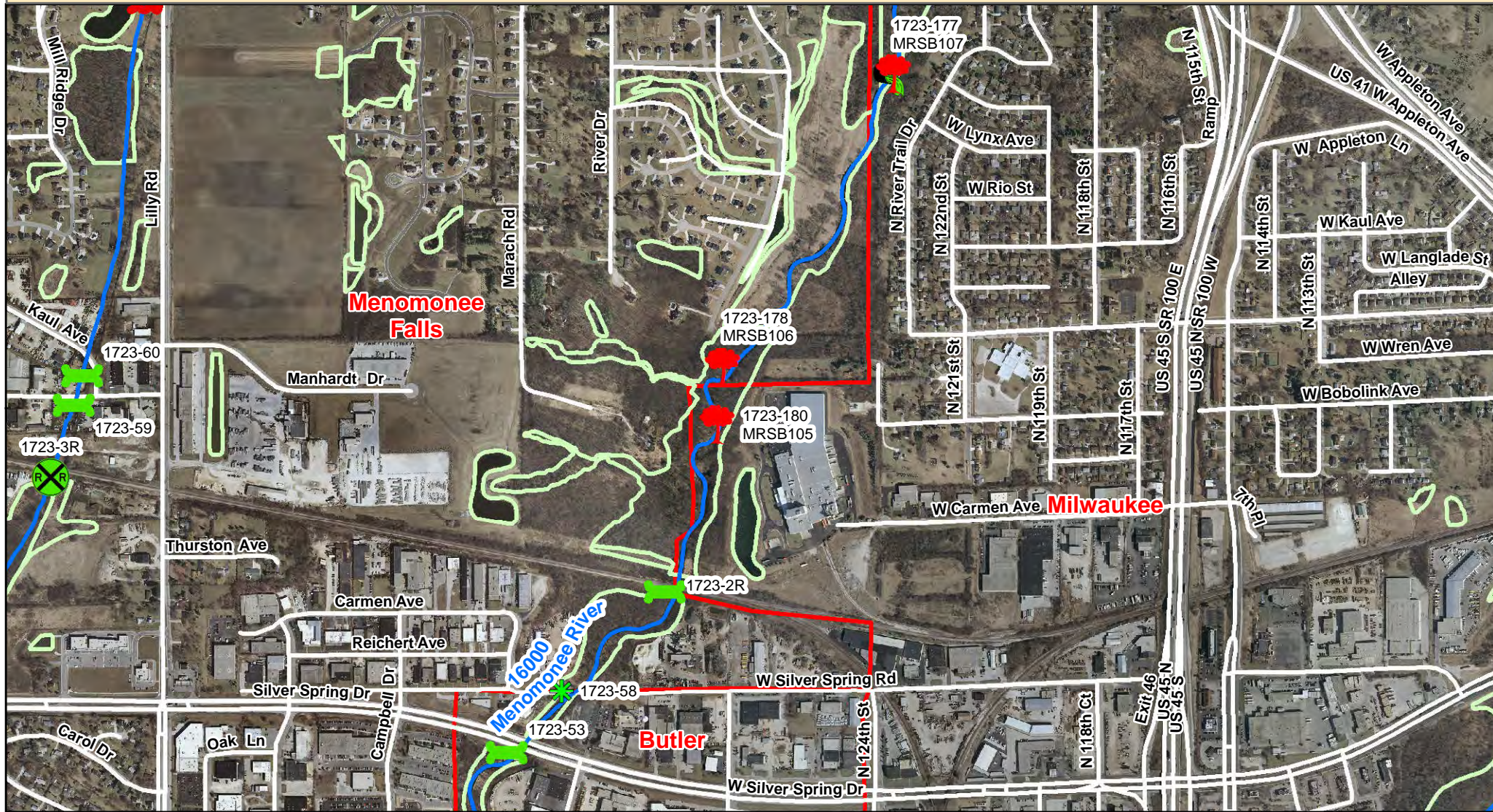


Red (Barrier) Green (Passable)

- | | | | | | | | | | |
|--|--------------------|--|---------------------|--|---------------------|--|--------------------|--|-------------------------|
| | Road Culvert | | Woody Debris Jam | | Dam | | Railroad | | Storm Ditch/Pond Outlet |
| | Railroad Culvert | | Sediment Debris Jam | | Fence | | Stream | | Wetland Outlet |
| | Golf Course Bridge | | Rocky Debris Jam | | Other Feature | | Roadway | | Tributary Outlet |
| | Pedestrian Bridge | | | | Waterfall / Cascade | | County Boundary | | |
| | Free Span Bridge | | | | Low Water Crossing | | Municipal Boundary | | |
| | | | | | | | Wetland Boundary | | |

Menomonee River Watershed Fish Passage Survey: Barriers & Potential Habitat Connectivity

Menomonee River (WBIC 16000) - Map 8

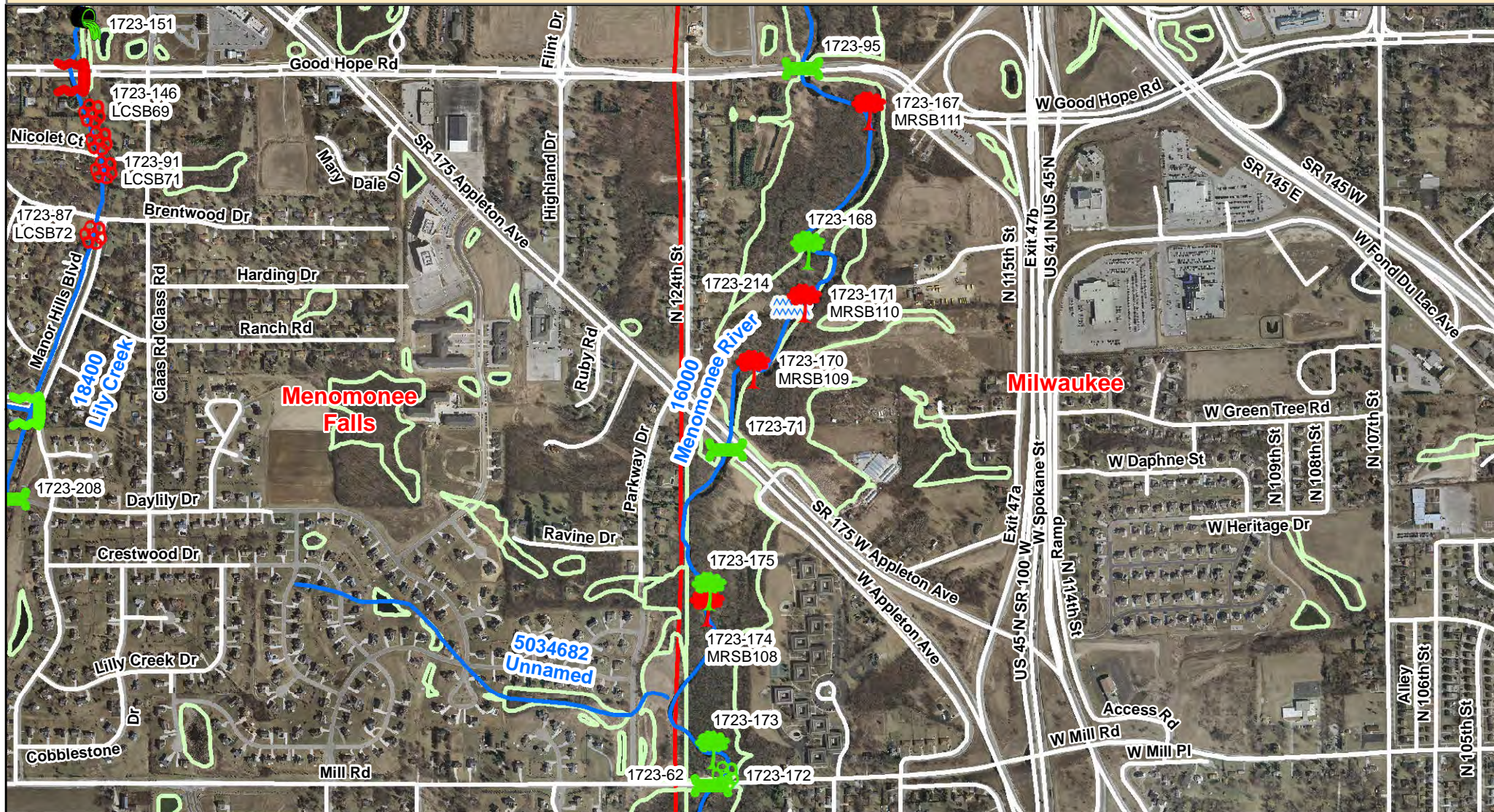


Red (Barrier) Green (Passable)

- | | | | | | | | | | |
|--|--------------------|--|---------------------|--|---------------------|--|--------------------|--|-------------------------|
| | Road Culvert | | Woody Debris Jam | | Dam | | Railroad | | Storm Ditch/Pond Outlet |
| | Railroad Culvert | | Sediment Debris Jam | | Fence | | Stream | | Wetland Outlet |
| | Golf Course Bridge | | Rocky Debris Jam | | Other Feature | | Roadway | | Tributary Outlet |
| | Pedestrian Bridge | | | | Waterfall / Cascade | | County Boundary | | |
| | Free Span Bridge | | | | Low Water Crossing | | Municipal Boundary | | |
| | | | | | | | Wetland Boundary | | |

Menomonee River Watershed Fish Passage Survey: Barriers & Potential Habitat Connectivity

Menomonee River (WBIC 16000) - Map 9

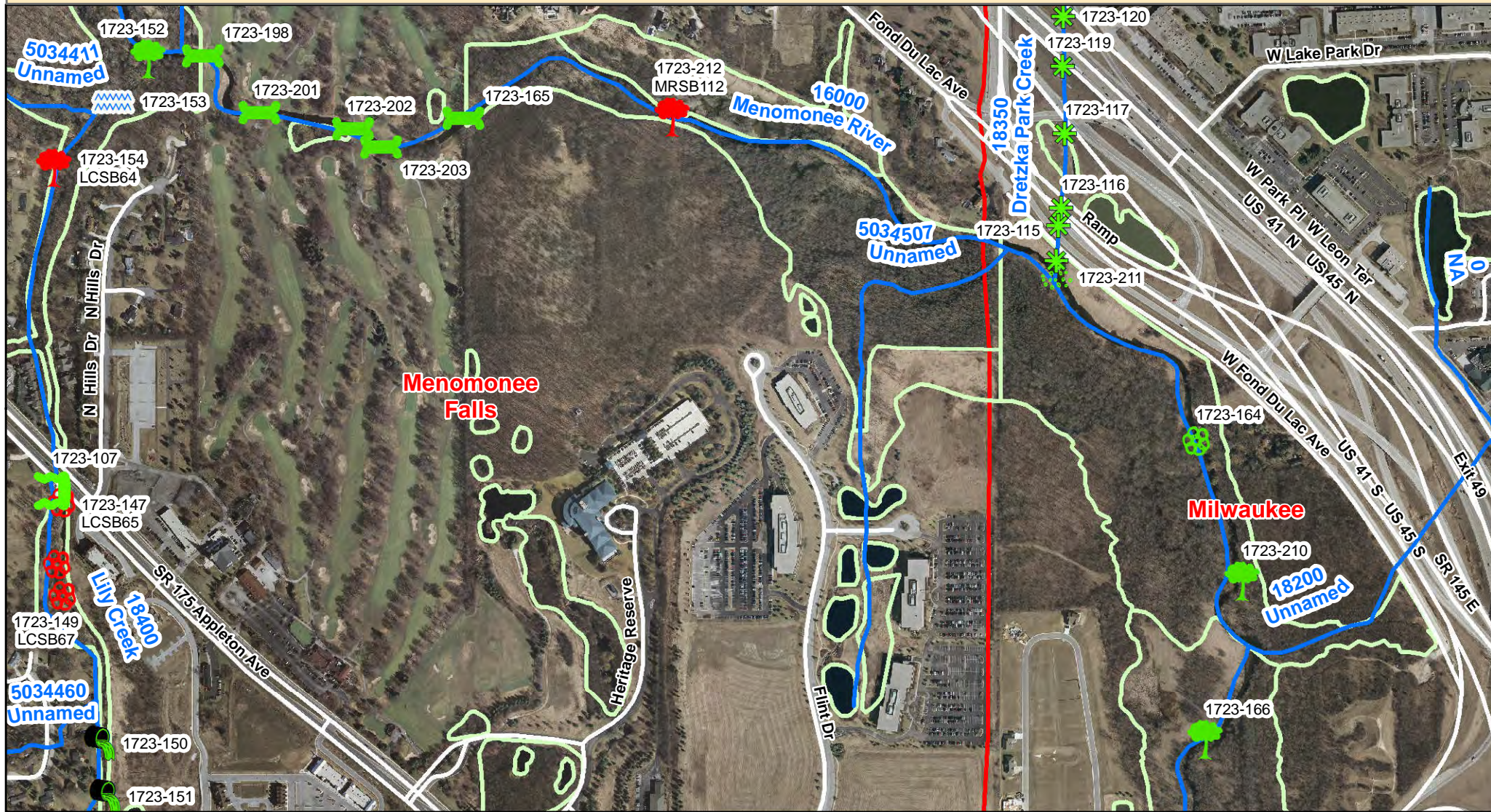


Red (Barrier) Green (Passable)

- | | | | | |
|--|--|--|--|--|
| | | | | |
| | | | | |
| | | | | |
| | | | | |
| | | | | |

Menomonee River Watershed Fish Passage Survey: Barriers & Potential Habitat Connectivity

Menomonee River (WBIC 16000) - Map 10

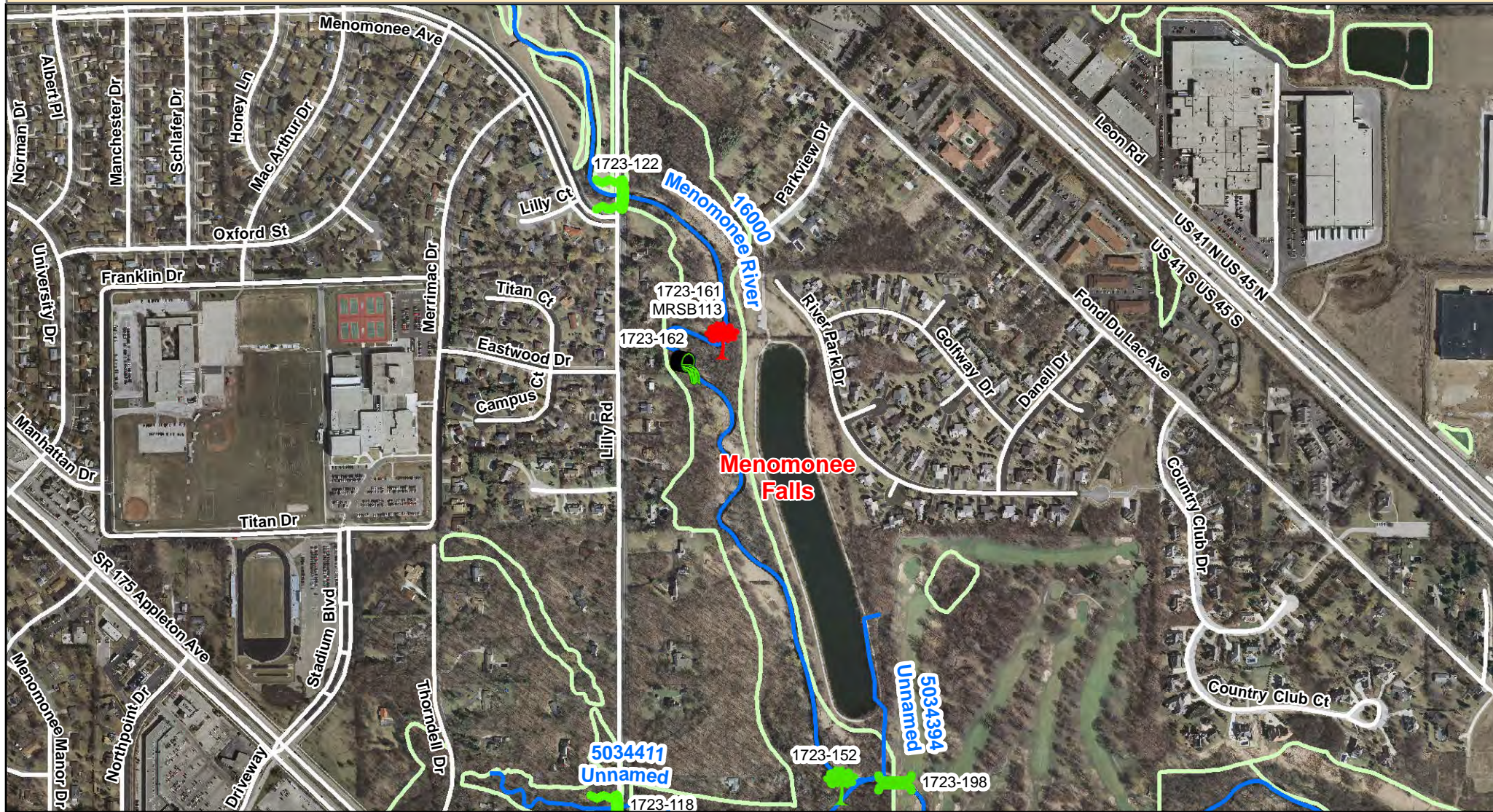


Red (Barrier) Green (Passable)

- | | | | | | | | | | |
|--|--------------------|--|---------------------|--|------------------|--|--------------------|--|-------------------------|
| | Road Culvert | | Woody Debris Jam | | Dam | | Railroad | | Storm Ditch/Pond Outlet |
| | Railroad Culvert | | Sediment Debris Jam | | Fence | | Stream | | Wetland Outlet |
| | Golf Course Bridge | | Rocky Debris Jam | | Other Feature | | Roadway | | Tributary Outlet |
| | Pedestrian Bridge | | Waterfall / Cascade | | County Boundary | | Municipal Boundary | | |
| | Free Span Bridge | | Low Water Crossing | | Wetland Boundary | | | | |

Menomonee River Watershed Fish Passage Survey: Barriers & Potential Habitat Connectivity

Menomonee River (WBIC 16000) - Map 11

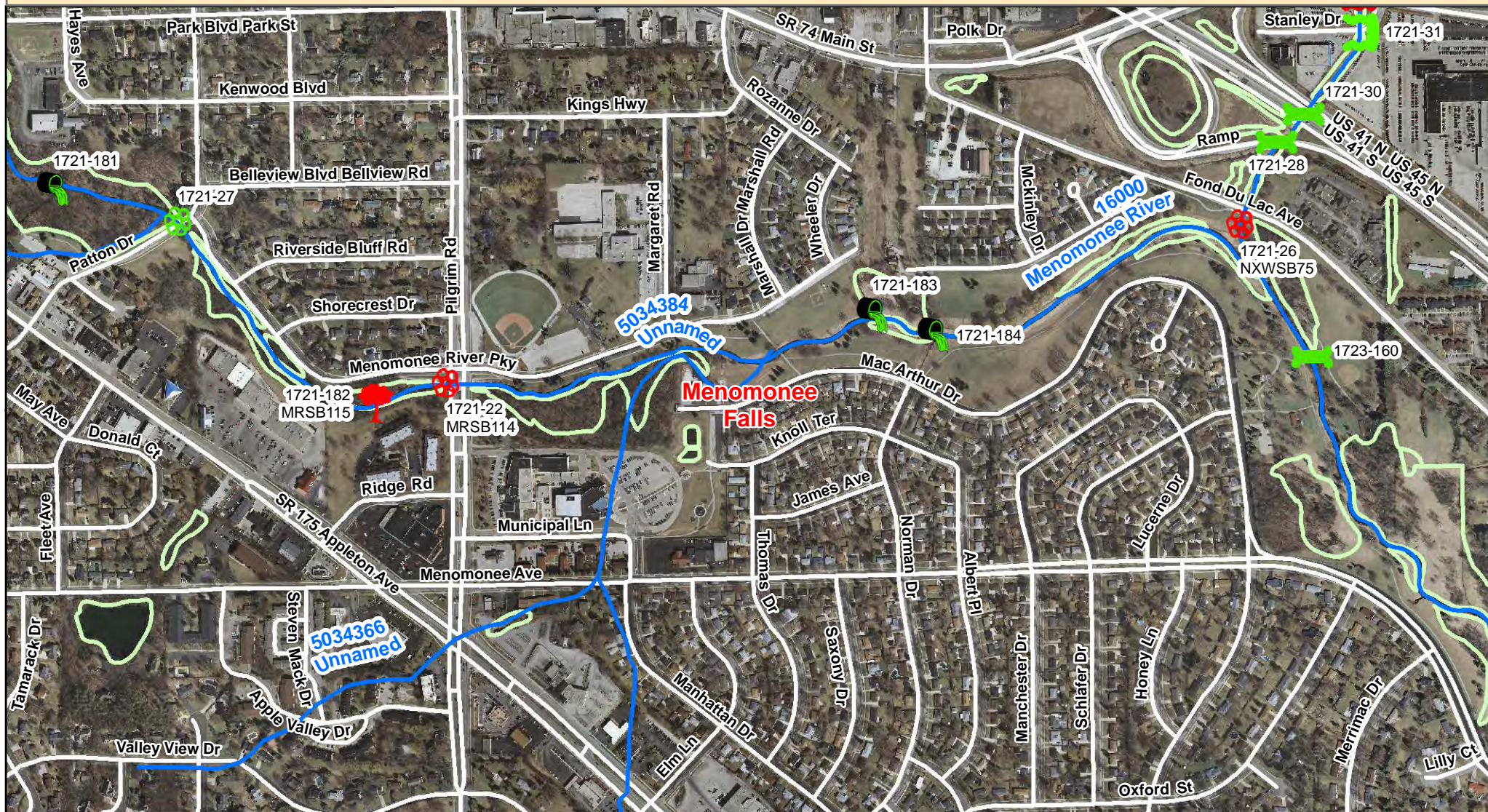


Red (Barrier) Green (Passable)

- | | | | | | | | | | |
|--|--------------------|--|---------------------|--|---------------------|--|--------------------|--|-------------------------|
| | Road Culvert | | Woody Debris Jam | | Dam | | Railroad | | Storm Ditch/Pond Outlet |
| | Railroad Culvert | | Sediment Debris Jam | | Fence | | Stream | | Wetland Outlet |
| | Golf Course Bridge | | Rocky Debris Jam | | Other Feature | | Roadway | | Tributary Outlet |
| | Pedestrian Bridge | | | | Waterfall / Cascade | | County Boundary | | |
| | Free Span Bridge | | | | Low Water Crossing | | Municipal Boundary | | |
| | | | | | | | Wetland Boundary | | |

Menomonee River Watershed Fish Passage Survey: Barriers & Potential Habitat Connectivity

Menomonee River (WBIC 16000) - Map 12

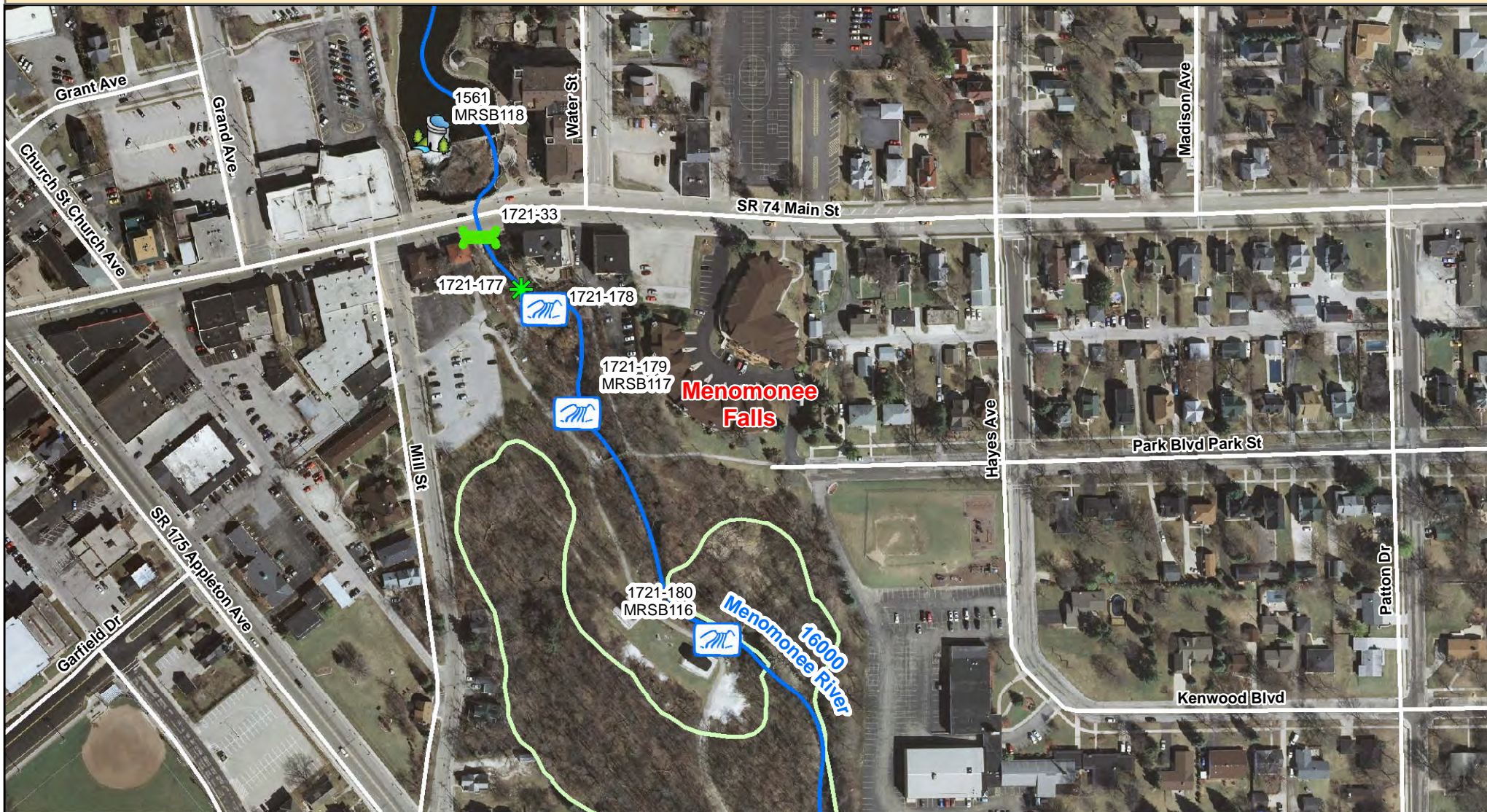


Red (Barrier) Green (Passable)

- | | | | | | | | | | |
|--|--------------------|--|---------------------|--|------------------|--|--------------------|--|-------------------------|
| | Road Culvert | | Woody Debris Jam | | Dam | | Railroad | | Storm Ditch/Pond Outlet |
| | Railroad Culvert | | Sediment Debris Jam | | Fence | | Stream | | Wetland Outlet |
| | Golf Course Bridge | | Rocky Debris Jam | | Other Feature | | Roadway | | Tributary Outlet |
| | Pedestrian Bridge | | Waterfall / Cascade | | County Boundary | | Municipal Boundary | | |
| | Free Span Bridge | | Low Water Crossing | | Wetland Boundary | | | | |

Menomonee River Watershed Fish Passage Survey: Barriers & Potential Habitat Connectivity

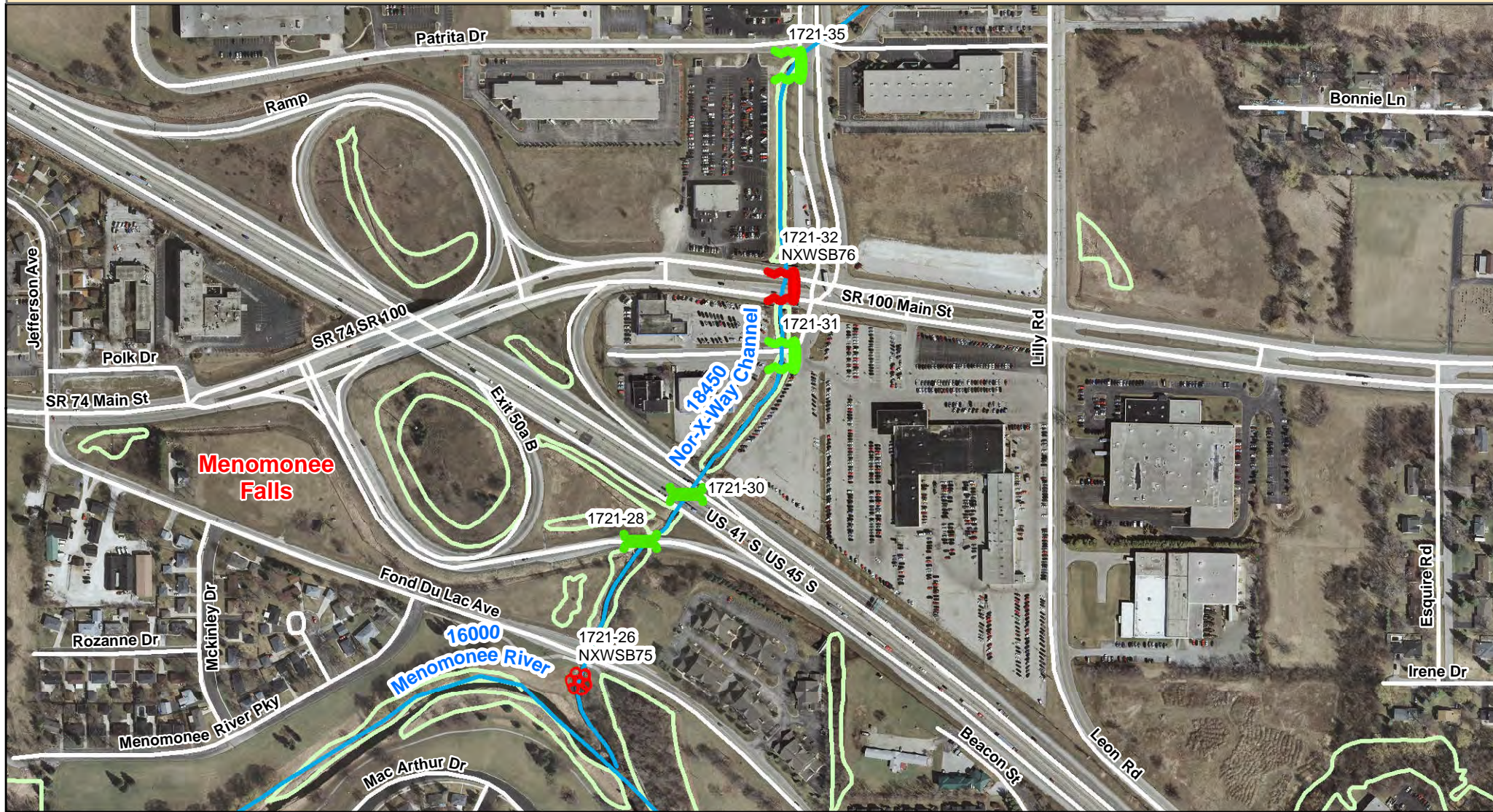
Menomonee River (WBIC 16000) - Map 13



Red (Barrier) Green (Passable)

- | | | | | | | | | | |
|--|--------------------|--|---------------------|--|---------------------|--|------------------|--|-------------------------|
| | Road Culvert | | Woody Debris Jam | | Dam | | Railroad | | Storm Ditch/Pond Outlet |
| | Road Culvert | | Woody Debris Jam | | Fence | | Stream | | Wetland Outlet |
| | Railroad Culvert | | Sediment Debris Jam | | Other Feature | | Roadway | | Tributary Outlet |
| | Railroad Culvert | | Sediment Debris Jam | | Waterfall / Cascade | | County Boundary | | Municipal Boundary |
| | Golf Course Bridge | | Rocky Debris Jam | | Low Water Crossing | | Wetland Boundary | | |
| | Golf Course Bridge | | Rocky Debris Jam | | | | | | |
| | Pedestrian Bridge | | | | | | | | |
| | Pedestrian Bridge | | | | | | | | |
| | Free Span Bridge | | | | | | | | |

Menomonee River Watershed Fish Passage Survey: Barriers & Potential Habitat Connectivity Nor-X-Way Channel (WBIC 18450) - Map 1

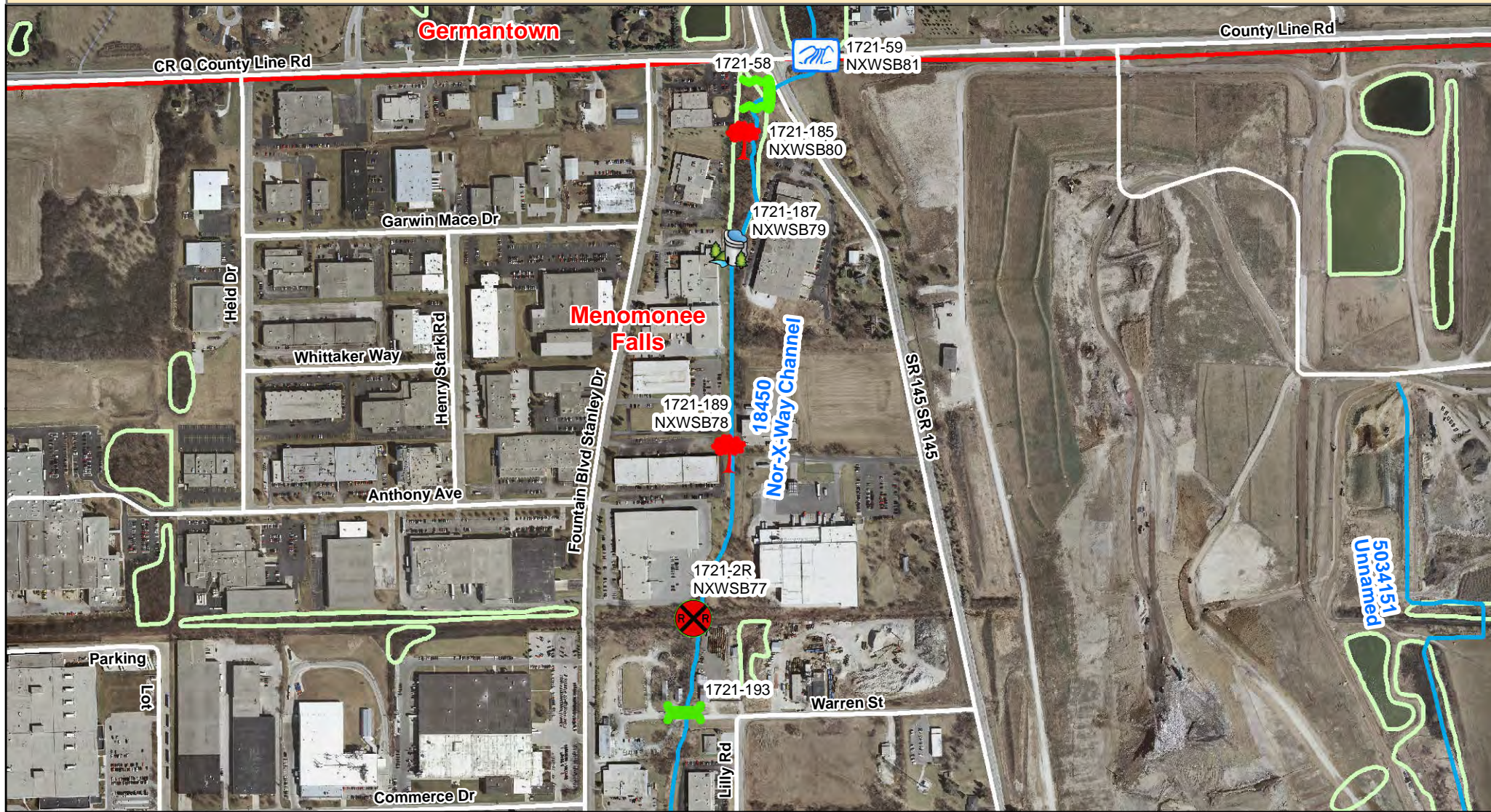


Red (Barrier) Green (Passable)

- | | | | | | | | | | |
|--|--------------------|--|---------------------|--|------------------|--|--------------------|--|-------------------------|
| | Road Culvert | | Woody Debris Jam | | Dam | | Railroad | | Storm Ditch/Pond Outlet |
| | Railroad Culvert | | Sediment Debris Jam | | Fence | | Stream | | Wetland Outlet |
| | Golf Course Bridge | | Rocky Debris Jam | | Other Feature | | Roadway | | Tributary Outlet |
| | Pedestrian Bridge | | Waterfall / Cascade | | County Boundary | | Municipal Boundary | | |
| | Free Span Bridge | | Low Water Crossing | | Wetland Boundary | | | | |

Menomonee River Watershed Fish Passage Survey: Barriers & Potential Habitat Connectivity

Nor-X-Way Channel (WBIC 18450) - Map 2



Red (Barrier) Green (Passable)

- | | | | | | | | | | |
|--|--------------------|--|---------------------|--|------------------|--|--------------------|--|-------------------------|
| | Road Culvert | | Woody Debris Jam | | Dam | | Railroad | | Storm Ditch/Pond Outlet |
| | Railroad Culvert | | Sediment Debris Jam | | Fence | | Stream | | Wetland Outlet |
| | Golf Course Bridge | | Rocky Debris Jam | | Other Feature | | Roadway | | Tributary Outlet |
| | Pedestrian Bridge | | Waterfall / Cascade | | County Boundary | | Municipal Boundary | | |
| | Free Span Bridge | | Low Water Crossing | | Wetland Boundary | | | | |

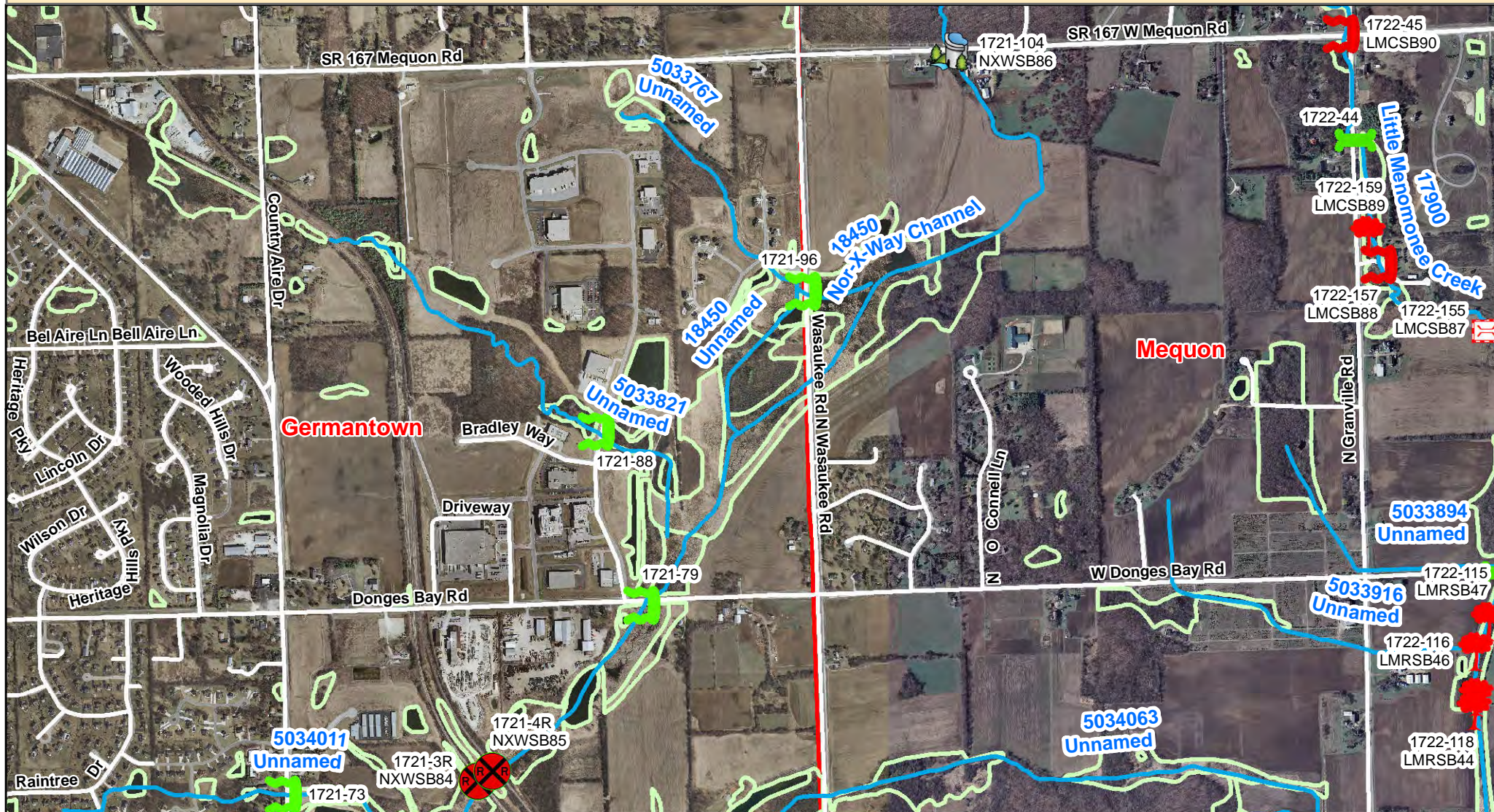
Menomonee River Watershed Fish Passage Survey: Barriers & Potential Habitat Connectivity Nor-X-Way Channel (WBIC 18450) - Map 3



Red (Barrier) Green (Passable)

- | | | | | | | | | | |
|--|--------------------|--|---------------------|--|---------------------|--|--------------------|--|-------------------------|
| | Road Culvert | | Woody Debris Jam | | Dam | | Railroad | | Storm Ditch/Pond Outlet |
| | Railroad Culvert | | Sediment Debris Jam | | Fence | | Stream | | Wetland Outlet |
| | Golf Course Bridge | | Rocky Debris Jam | | Other Feature | | Roadway | | Tributary Outlet |
| | Pedestrian Bridge | | | | Waterfall / Cascade | | County Boundary | | |
| | Free Span Bridge | | | | Low Water Crossing | | Municipal Boundary | | |
| | | | | | | | Wetland Boundary | | |

Menomonee River Watershed Fish Passage Survey: Barriers & Potential Habitat Connectivity Nor-X-Way Channel (WBIC 18450) - Map 4

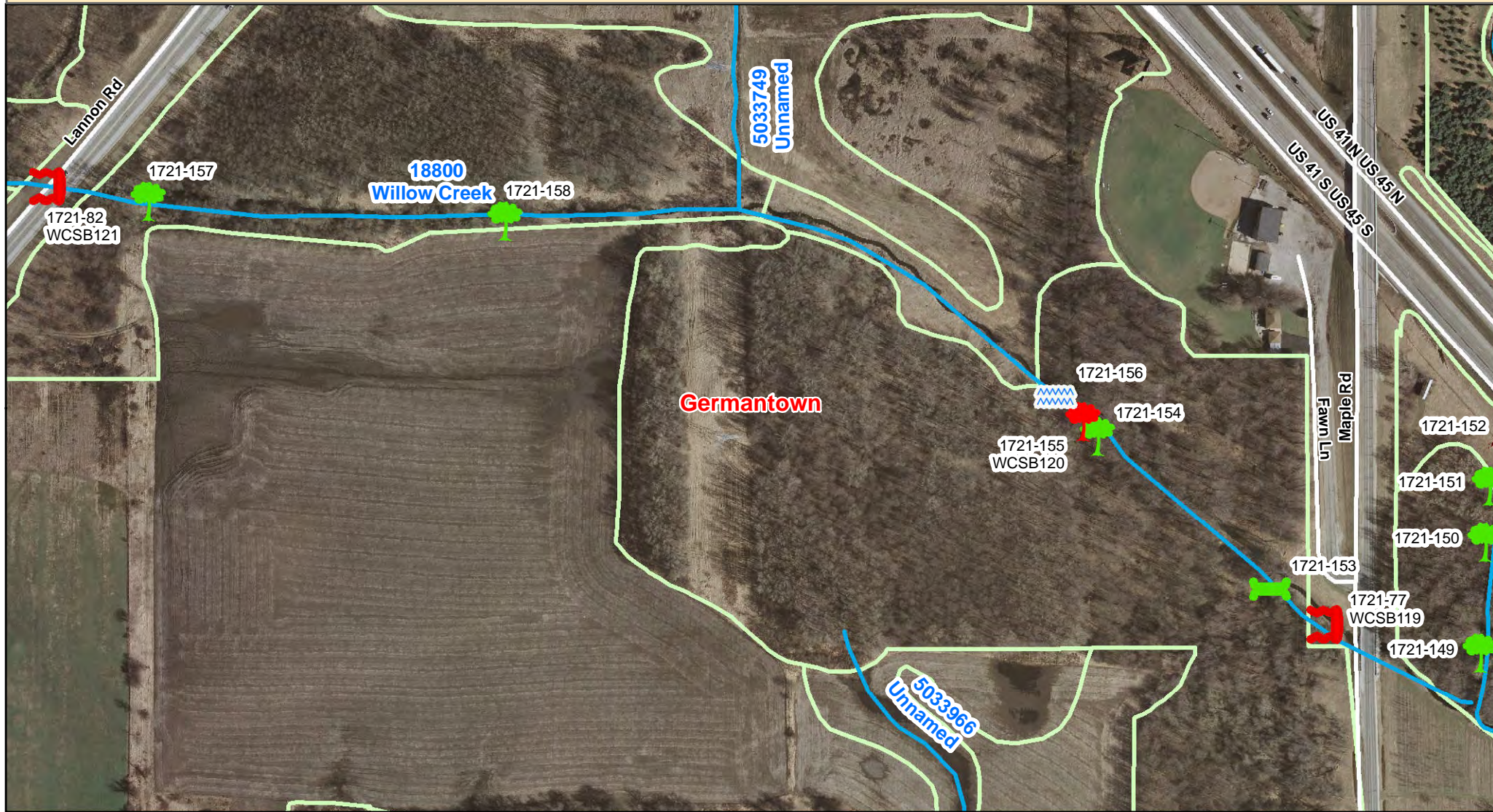


Red (Barrier) Green (Passable)

- | | | | | | | | | | |
|--|--------------------|--|---------------------|--|------------------|--|--------------------|--|-------------------------|
| | Road Culvert | | Woody Debris Jam | | Dam | | Railroad | | Storm Ditch/Pond Outlet |
| | Railroad Culvert | | Sediment Debris Jam | | Fence | | Stream | | Wetland Outlet |
| | Golf Course Bridge | | Rocky Debris Jam | | Other Feature | | Roadway | | Tributary Outlet |
| | Pedestrian Bridge | | Waterfall / Cascade | | County Boundary | | Municipal Boundary | | |
| | Free Span Bridge | | Low Water Crossing | | Wetland Boundary | | | | |

Menomonee River Watershed Fish Passage Survey: Barriers & Potential Habitat Connectivity

Willow Creek (WBIC 18800) - Map 1

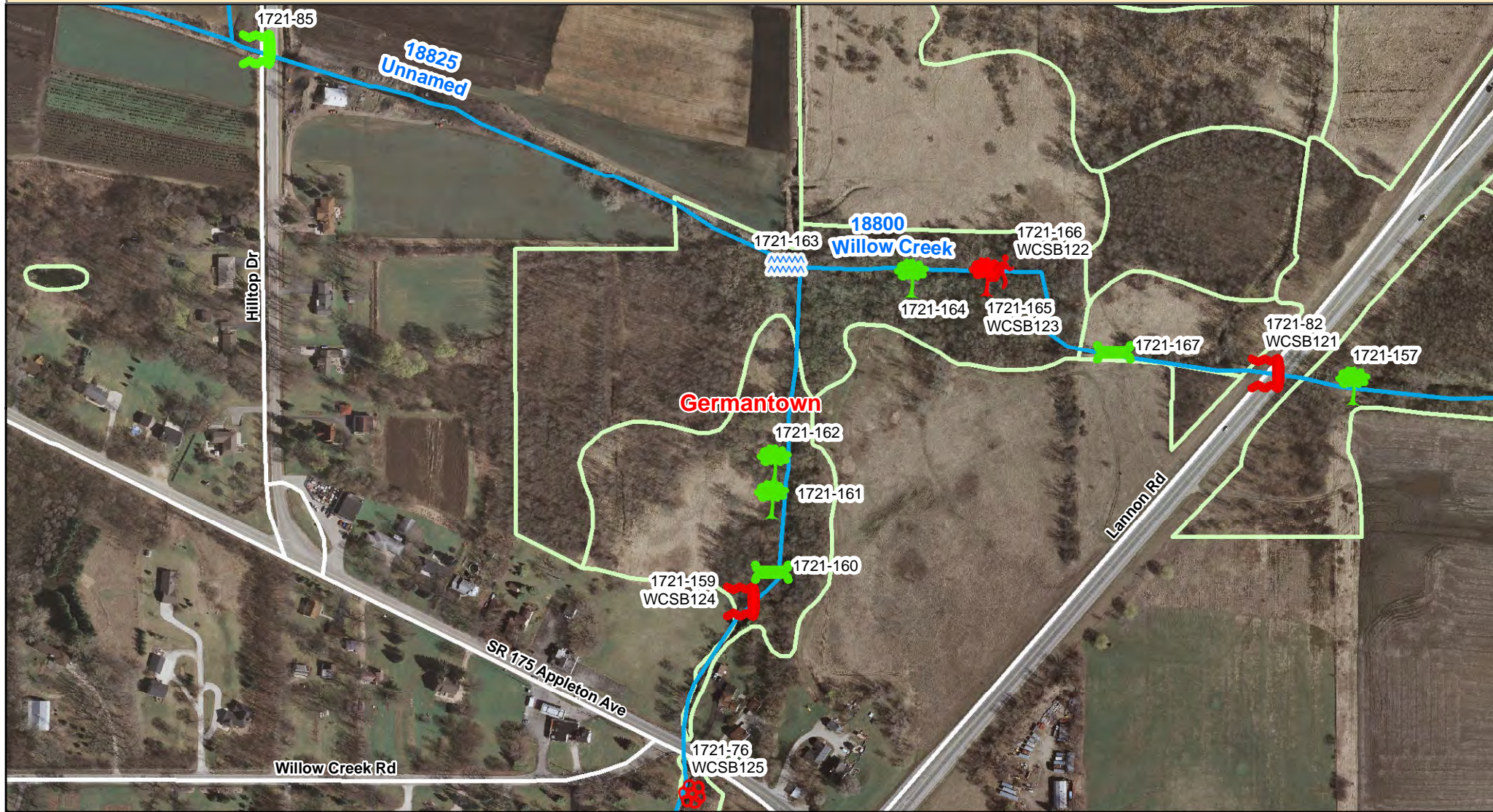


Red (Barrier) Green (Passable)

- | | | | | | | | | | |
|--|--------------------|--|---------------------|--|---------------------|--|--------------------|--|-------------------------|
| | Road Culvert | | Woody Debris Jam | | Dam | | Railroad | | Storm Ditch/Pond Outlet |
| | Railroad Culvert | | Sediment Debris Jam | | Fence | | Stream | | Wetland Outlet |
| | Golf Course Bridge | | Rocky Debris Jam | | Other Feature | | Roadway | | Tributary Outlet |
| | Pedestrian Bridge | | | | Waterfall / Cascade | | County Boundary | | |
| | Free Span Bridge | | | | Low Water Crossing | | Municipal Boundary | | |
| | | | | | | | Wetland Boundary | | |

Menomonee River Watershed Fish Passage Survey: Barriers & Potential Habitat Connectivity

Willow Creek (WBIC 18800) - Map 2



Red (Barrier) Green (Passable)

- | | | | | | | | | | |
|--|--------------------|--|---------------------|--|---------------------|--|------------------|--|-------------------------|
| | Road Culvert | | Woody Debris Jam | | Dam | | Railroad | | Storm Ditch/Pond Outlet |
| | Railroad Culvert | | Sediment Debris Jam | | Fence | | Stream | | Wetland Outlet |
| | Golf Course Bridge | | Rocky Debris Jam | | Other Feature | | Roadway | | Tributary Outlet |
| | Pedestrian Bridge | | | | Waterfall / Cascade | | County Boundary | | Municipal Boundary |
| | Free Span Bridge | | | | Low Water Crossing | | Wetland Boundary | | |

Menomonee River Watershed Fish Passage Survey: Barriers & Potential Habitat Connectivity

Willow Creek (WBIC 18800) - Map 3



Red (Barrier) Green (Passable)

- | | | | | | | | | | |
|--|--------------------|--|---------------------|--|---------------------|--|--------------------|--|-------------------------|
| | Road Culvert | | Woody Debris Jam | | Dam | | Railroad | | Storm Ditch/Pond Outlet |
| | Railroad Culvert | | Sediment Debris Jam | | Fence | | Stream | | Wetland Outlet |
| | Golf Course Bridge | | Rocky Debris Jam | | Other Feature | | Roadway | | Tributary Outlet |
| | Pedestrian Bridge | | | | Waterfall / Cascade | | County Boundary | | |
| | Free Span Bridge | | | | Low Water Crossing | | Municipal Boundary | | |
| | | | | | | | Wetland Boundary | | |

Menomonee River Watershed Fish Passage Survey: Barriers & Potential Habitat Connectivity

Unnamed Stream (WBIC 5033701)



Red (Barrier) Green (Passable)

- | | | | | | | | | | |
|--|--------------------|--|---------------------|--|---------------------|--|--------------------|--|-------------------------|
| | Road Culvert | | Woody Debris Jam | | Dam | | Railroad | | Storm Ditch/Pond Outlet |
| | Railroad Culvert | | Sediment Debris Jam | | Fence | | Stream | | Wetland Outlet |
| | Golf Course Bridge | | Rocky Debris Jam | | Other Feature | | Roadway | | Tributary Outlet |
| | Pedestrian Bridge | | | | Waterfall / Cascade | | County Boundary | | |
| | Free Span Bridge | | | | Low Water Crossing | | Municipal Boundary | | |
| | | | | | | | Wetland Boundary | | |

