



Domtar  
301 Point Basse Ave.  
Nekoosa, WI 54457-1422  
T 715-886-7111  
www.domtar.com

**ORIGINAL**

Mr. Nick Utrup  
U.S. Fish & Wildlife Service  
Twin Cities Field Office  
4101 American Boulevard East  
Bloomington, MN 55425

September 4, 2018

Ms. Cheryl Laatsch, FERC Coordinator  
Wisconsin Department of Natural Resources  
N7725 Highway 28  
Horicon, WI 53032

FILED  
SECRETARY OF THE  
FEDERAL ENERGY REGULATORY COMMISSION  
2018 SEP 18 A 8 30  
FEDERAL ENERGY REGULATORY COMMISSION

Dear Mr. Utrup and Ms. Laatsch:

Subject: Domtar Wisconsin Dam Corp.  
FERC Projects 2255, 2291 and 2292  
Centralia, Port Edwards, and Nekoosa Projects  
Purple Loosestrife Monitoring Report for 2018

Attached is a report for purple loosestrife monitoring as required by Article 408 for projects 2255 and 2291, and by Article 407 for project 2292. A single report for the three projects has been prepared. Please note that the attached survey maps provide information for both 2017 and 2018 survey years.

The survey was performed substantially as described in the plan submitted to the FERC Secretary on January 13, 1997, and as approved by FERC on July 16, 1997. The 2018 survey was performed during July as described in the report.

If there are any questions, please feel free to contact me at (715) 886-7711.

Sincerely,

David S. Ulrich, Superintendent  
Environmental Services

DSU:krw

cc: Mr. John A. Zygaj, P.E. Regional Engineer, Federal Energy Regulatory Commission,  
Chicago Regional Office, 230 South Dearborn Street, Chicago, IL 60604

Secretary, Federal Energy Regulatory Commission, 888 First Street, N.E.,  
Mail Code DHAC, PJ-12.3, Washington, D.C. 20426

**PURPLE LOOSESTRIFE MONITORING SURVEY FOR 2018  
DOMTAR WISCONSIN DAM CORP.  
301 Point Basse Avenue  
Nekoosa, Wisconsin 54457**

**By  
Dan Cummins  
Cummins Enterprises, LLC**

**FERC Projects  
Centralia Dam – No. 2252  
Port Edwards Dam – No. 2291  
Nekoosa Dam – No. 2292**

**BACKGROUND**

During July 2018, Cummins Enterprises, LLC, conducted the annual purple loosestrife survey of project lands. Observations were made from the shoreline along the Wisconsin River throughout Domtar's FERC permitted property.

Surveys have been conducted annually since 1997. As part of this report, purple loosestrife observed in 2018 are compared to that observed in 2017. As requested, the 2018 survey results have been plotted on the 2017 Purple Loosestrife Survey maps. Note the 2018 data are presented in red.

**DESCRIPTION OF THE PURPLE LOOSESTRIFE POPULATIONS IN 2018**

**Figure 1a**

Survey observations made of the project area represented on this figure indicate the purple loosestrife have increased slightly throughout the area. The public areas are well maintained through the city parks. Purple loosestrife on the islands in this section saw a decrease in purple loosestrife.

**Figure 1b**

In the vicinity of the city parks purple loosestrife showed a slight increase from 2017, which is the same observed from 2016 to 2017. Groupings of large numbers of plants upstream of the Centralia Dam account for about a third of the increase. Two of the very small rock outcrops account for another third of the increased number of plants in this section of river.

**Figure 1c**

The power line easement for the Centralia Dam continues to be free of purple loosestrife.

**Figure 2a**

The Port Edwards portion of the survey area has seen a decrease of purple loosestrife when compared to 2017. A concentration of purple loosestrife near the former office building and parking lot was a localized significant increase in the number of plants. The rock outcrops near Four Mile Creek have seen a significant decrease in purple loosestrife plants.

**Figure 3a**

The purple loosestrife along the shoreline in this area has decreased slightly from 2017 numbers. Shoreline groupings of plants have decreased in their numbers and number of locations. The large populations between the highway and river near the unofficial boat launch area have increased significantly. The loosestrife has spread throughout this area since removal effort a few years ago.

**Figure 3b**

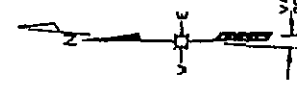
Shoreline purple loosestrife in this segment of the Wisconsin River has decreased throughout the area compared to 2017. The large loosestrife population downstream of the Nekoosa Dam has increased again this year. As in the previous river section, the shoreline groupings of plants have decreased in their numbers and number of locations.

**CONCLUSIONS**

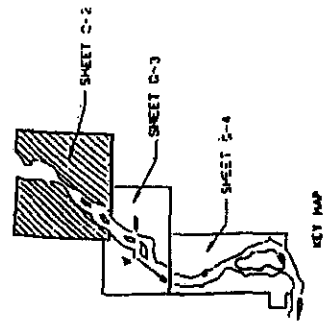
The purple loosestrife population has increased slightly in most areas. Several areas with large populations of plants in small areas have seen an increase. The distribution of loosestrife has decreased with fewer stretches of river bank containing plants.

Dan Cummins  
Cummins Enterprises, LLC  
909 W. 8<sup>th</sup> Street  
Marshfield, Wisconsin 54449  
715-697-8301

20180918-0009 FERC PDR (Unofficial) 09/18/2018



COUNTY: WOOD  
STATE: WISCONSIN



FLOWAGE RIGHTS  
PARCEL NO.

NOTE: BELLE ISLAND IS CLAIMED BY THE UNITED STATES AND ADMINISTERED BY THE BUREAU OF LAND MANAGEMENT. THIS CLAIM IS DEPICTED.

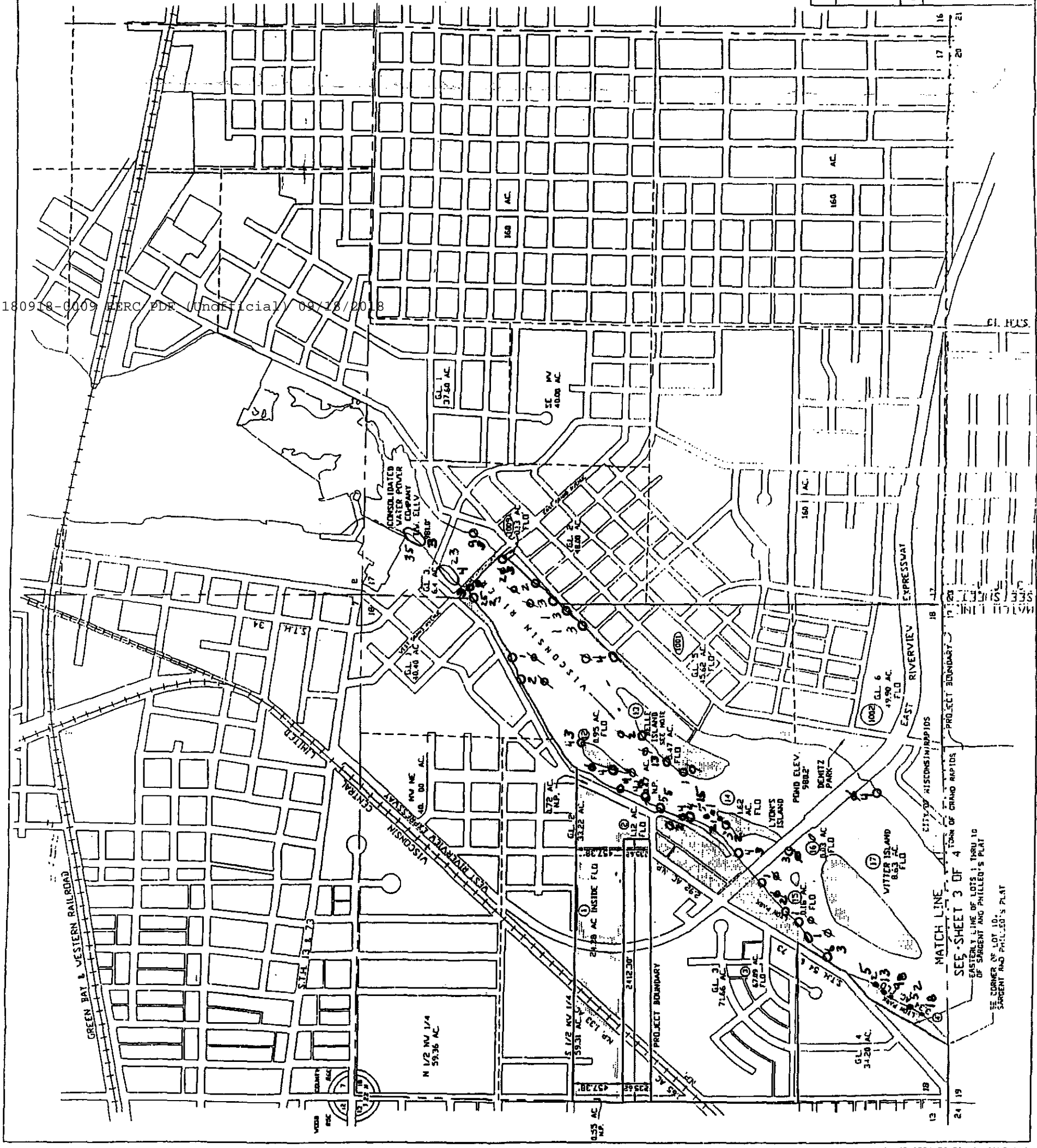
THIS DRAWING IS A PART OF THE REGISTRATION FOR LICENSE MADE BY THE LICENSEE. THIS SHEET SHALL BE FILED WITH THE REGISTRATION.

NEKOOSA PAPERS INC.  
PORT EDWARDS, WISCONSIN  
CENTRALIA HYDROELECTRIC PROJECT  
EXHIBIT G  
PROJECT MAP  
400' 200' 0 400' 800'  
1"=400'

AUGUST 24, 1980 FERC LICENSE NO. 2255 SHEET C-2

**2017 ANNUAL PURPLE  
LOOSESTRIPE SURVEY (BLUE)**

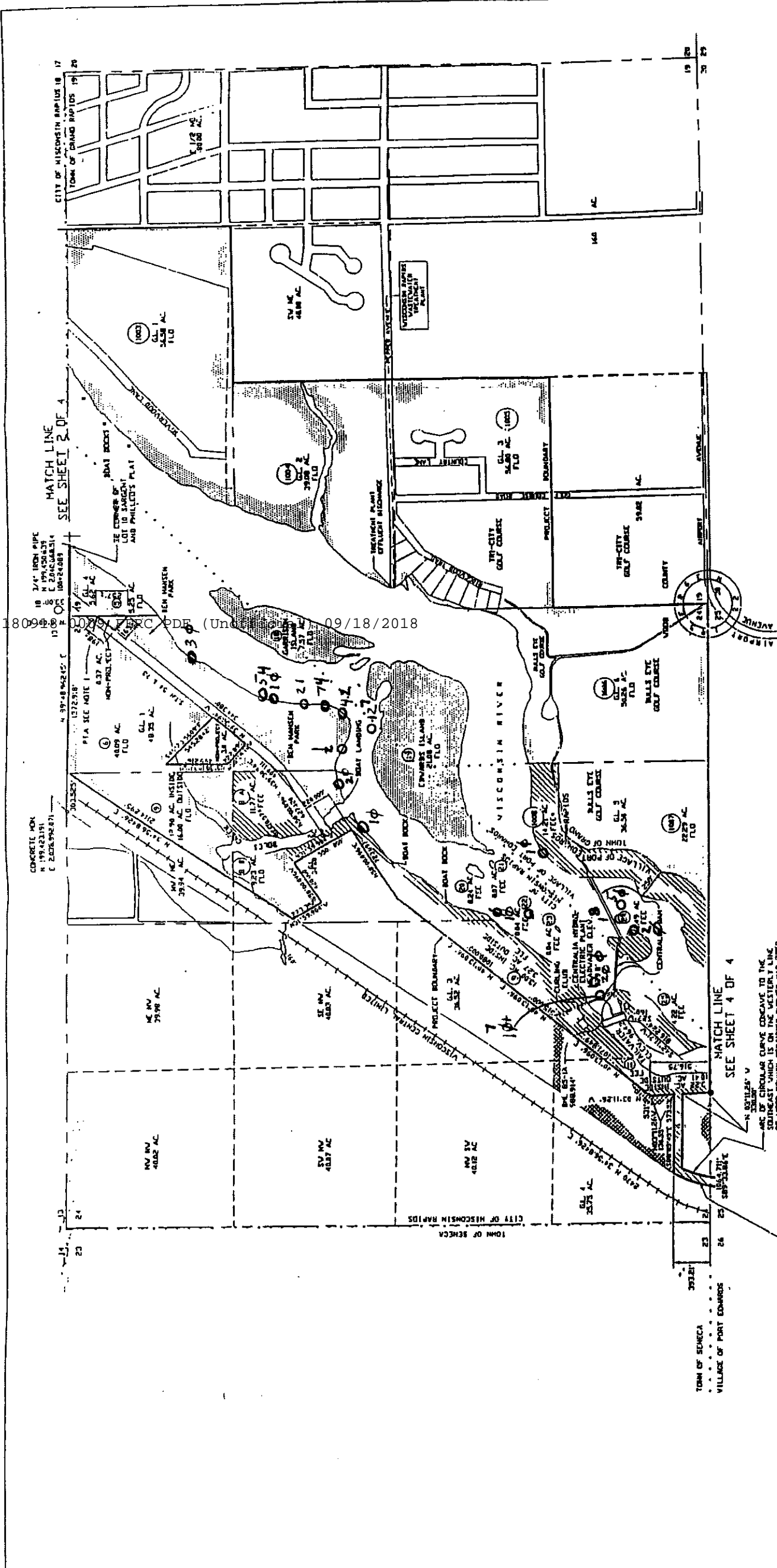
**2018 ANNUAL PURPLE  
LOOSESTRIPE SURVEY (RED)**  
Figure 1a



MATCH LINE  
SEE SHEET 3 OF 4 TOWN OF GRAND RAPIDS  
EASTERLY LINE OF LOTS 1 THRU 10  
OF SARGENT AND PHILLIP'S PLAT  
SE CORNER OF LOT 10,  
SARGENT AND PHILLIP'S PLAT

NOTED  
REVISED 10.0  
PLAT SCALE: 1"=400'  
REV. UND. NO. 13752-CUVU-50041

20180909 10:29:13 ARC PDF (Unlocked) 09/18/2018

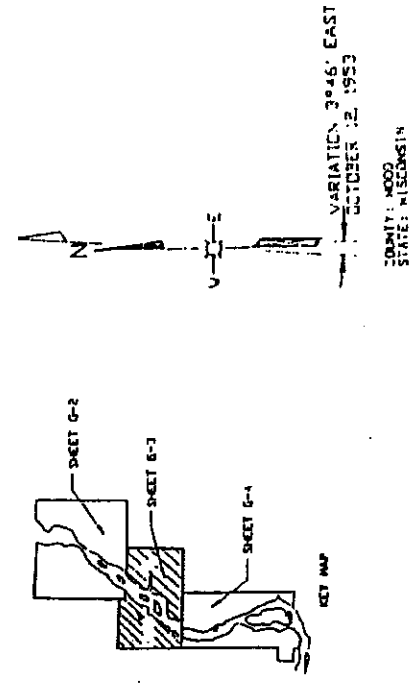


THIS DRAWING IS A PART OF THE APPLICATION FOR A LICENSE MADE BY THE UNDERSIGNED THIS 15th DAY OF JULY 1991.

|                                                             |                       |
|-------------------------------------------------------------|-----------------------|
| NEKOOSA PAPERS INC<br>PORT EDWARDS, WISCONSIN               |                       |
| CENTRALIA HYDROELECTRIC PROJECT<br>EXHIBIT C<br>PROJECT MAP |                       |
| 400' 200' 0 600' 800'                                       |                       |
| JULY 15, 1991                                               | PERC LICENSE NO. 2255 |
| 2017 ANNUAL PURPLE<br>LOOSESTRIPE SURVEY (BLUE)             | SHEET 6-3             |
| 2018 ANNUAL PURPLE<br>LOOSESTRIPE SURVEY (RED)              | Figure 1b             |

- 20 2" x 30" STEEL SHAFT ON RANDOM TRAVERSE
- 21 2" x 30" STEEL SHAFT ON RANDOM TRAVERSE
- 22 2" x 30" STEEL SHAFT ON RANDOM TRAVERSE
- 23 2" x 30" STEEL SHAFT ON RANDOM TRAVERSE
- 24 2" x 30" STEEL SHAFT ON RANDOM TRAVERSE
- 25 2" x 30" STEEL SHAFT ON RANDOM TRAVERSE
- 26 2" x 30" STEEL SHAFT ON RANDOM TRAVERSE
- 27 2" x 30" STEEL SHAFT ON RANDOM TRAVERSE
- 28 2" x 30" STEEL SHAFT ON RANDOM TRAVERSE
- 29 2" x 30" STEEL SHAFT ON RANDOM TRAVERSE
- 30 2" x 30" STEEL SHAFT ON RANDOM TRAVERSE
- 31 2" x 30" STEEL SHAFT ON RANDOM TRAVERSE
- 32 2" x 30" STEEL SHAFT ON RANDOM TRAVERSE
- 33 2" x 30" STEEL SHAFT ON RANDOM TRAVERSE
- 34 2" x 30" STEEL SHAFT ON RANDOM TRAVERSE
- 35 2" x 30" STEEL SHAFT ON RANDOM TRAVERSE
- 36 2" x 30" STEEL SHAFT ON RANDOM TRAVERSE
- 37 2" x 30" STEEL SHAFT ON RANDOM TRAVERSE
- 38 2" x 30" STEEL SHAFT ON RANDOM TRAVERSE
- 39 2" x 30" STEEL SHAFT ON RANDOM TRAVERSE
- 40 2" x 30" STEEL SHAFT ON RANDOM TRAVERSE
- 41 2" x 30" STEEL SHAFT ON RANDOM TRAVERSE
- 42 2" x 30" STEEL SHAFT ON RANDOM TRAVERSE
- 43 2" x 30" STEEL SHAFT ON RANDOM TRAVERSE
- 44 2" x 30" STEEL SHAFT ON RANDOM TRAVERSE
- 45 2" x 30" STEEL SHAFT ON RANDOM TRAVERSE
- 46 2" x 30" STEEL SHAFT ON RANDOM TRAVERSE
- 47 2" x 30" STEEL SHAFT ON RANDOM TRAVERSE
- 48 2" x 30" STEEL SHAFT ON RANDOM TRAVERSE
- 49 2" x 30" STEEL SHAFT ON RANDOM TRAVERSE
- 50 2" x 30" STEEL SHAFT ON RANDOM TRAVERSE
- 51 2" x 30" STEEL SHAFT ON RANDOM TRAVERSE
- 52 2" x 30" STEEL SHAFT ON RANDOM TRAVERSE
- 53 2" x 30" STEEL SHAFT ON RANDOM TRAVERSE
- 54 2" x 30" STEEL SHAFT ON RANDOM TRAVERSE
- 55 2" x 30" STEEL SHAFT ON RANDOM TRAVERSE
- 56 2" x 30" STEEL SHAFT ON RANDOM TRAVERSE
- 57 2" x 30" STEEL SHAFT ON RANDOM TRAVERSE
- 58 2" x 30" STEEL SHAFT ON RANDOM TRAVERSE
- 59 2" x 30" STEEL SHAFT ON RANDOM TRAVERSE
- 60 2" x 30" STEEL SHAFT ON RANDOM TRAVERSE
- 61 2" x 30" STEEL SHAFT ON RANDOM TRAVERSE
- 62 2" x 30" STEEL SHAFT ON RANDOM TRAVERSE
- 63 2" x 30" STEEL SHAFT ON RANDOM TRAVERSE
- 64 2" x 30" STEEL SHAFT ON RANDOM TRAVERSE
- 65 2" x 30" STEEL SHAFT ON RANDOM TRAVERSE
- 66 2" x 30" STEEL SHAFT ON RANDOM TRAVERSE
- 67 2" x 30" STEEL SHAFT ON RANDOM TRAVERSE
- 68 2" x 30" STEEL SHAFT ON RANDOM TRAVERSE
- 69 2" x 30" STEEL SHAFT ON RANDOM TRAVERSE
- 70 2" x 30" STEEL SHAFT ON RANDOM TRAVERSE
- 71 2" x 30" STEEL SHAFT ON RANDOM TRAVERSE
- 72 2" x 30" STEEL SHAFT ON RANDOM TRAVERSE
- 73 2" x 30" STEEL SHAFT ON RANDOM TRAVERSE
- 74 2" x 30" STEEL SHAFT ON RANDOM TRAVERSE
- 75 2" x 30" STEEL SHAFT ON RANDOM TRAVERSE
- 76 2" x 30" STEEL SHAFT ON RANDOM TRAVERSE
- 77 2" x 30" STEEL SHAFT ON RANDOM TRAVERSE
- 78 2" x 30" STEEL SHAFT ON RANDOM TRAVERSE
- 79 2" x 30" STEEL SHAFT ON RANDOM TRAVERSE
- 80 2" x 30" STEEL SHAFT ON RANDOM TRAVERSE
- 81 2" x 30" STEEL SHAFT ON RANDOM TRAVERSE
- 82 2" x 30" STEEL SHAFT ON RANDOM TRAVERSE
- 83 2" x 30" STEEL SHAFT ON RANDOM TRAVERSE
- 84 2" x 30" STEEL SHAFT ON RANDOM TRAVERSE
- 85 2" x 30" STEEL SHAFT ON RANDOM TRAVERSE
- 86 2" x 30" STEEL SHAFT ON RANDOM TRAVERSE
- 87 2" x 30" STEEL SHAFT ON RANDOM TRAVERSE
- 88 2" x 30" STEEL SHAFT ON RANDOM TRAVERSE
- 89 2" x 30" STEEL SHAFT ON RANDOM TRAVERSE
- 90 2" x 30" STEEL SHAFT ON RANDOM TRAVERSE
- 91 2" x 30" STEEL SHAFT ON RANDOM TRAVERSE
- 92 2" x 30" STEEL SHAFT ON RANDOM TRAVERSE
- 93 2" x 30" STEEL SHAFT ON RANDOM TRAVERSE
- 94 2" x 30" STEEL SHAFT ON RANDOM TRAVERSE
- 95 2" x 30" STEEL SHAFT ON RANDOM TRAVERSE
- 96 2" x 30" STEEL SHAFT ON RANDOM TRAVERSE
- 97 2" x 30" STEEL SHAFT ON RANDOM TRAVERSE
- 98 2" x 30" STEEL SHAFT ON RANDOM TRAVERSE
- 99 2" x 30" STEEL SHAFT ON RANDOM TRAVERSE
- 100 2" x 30" STEEL SHAFT ON RANDOM TRAVERSE

- FLUWAGE RIGHTS INSIDE PROJECT
- FEET INSIDE OF PROJECT
- FEET OF PROJECT
- FEET OF PROJECT



NOTE 1:  
COMMENCING AT THE NORTHEAST CORNER OF SECTION 24, T22N-R5E,  
THENCE SOUTH ALONG THE EAST SIDE OF SECTION 24 TO THE  
INTERSECTION WITH THE SOUTHERLY RIGHT-OF-WAY LINE OF  
WISCONSIN STATE TRUNK HIGHWAYS 54 AND 75 AND POINT A.

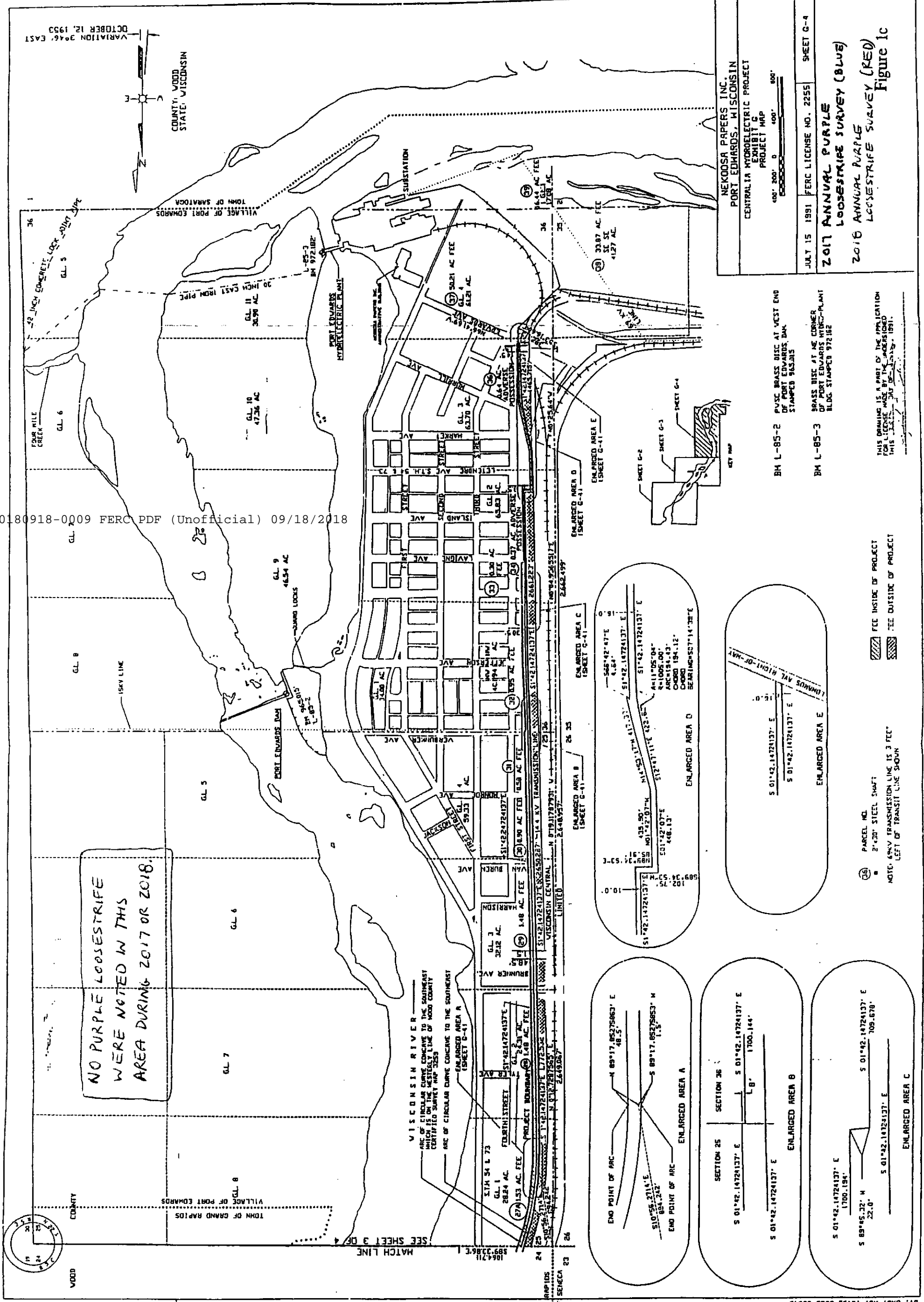
AUTOCAD  
RELEASE 10.0  
PLOT SCALE: 1"=400'  
BD: DMC, NO. 13752-CUUN-58042

VARIATION 12.1953 EAST  
OCTOBER 12, 1953

COUNTY, WOOD  
STATE, WISCONSIN

20180918-0009 FERC PDF (Unofficial) 09/18/2018

NO PURPLE LOOSESTRIFE  
WERE NOTED IN THIS  
AREA DURING 2017 OR 2018.



NEKOOSA PAPERS INC.  
PORT EDWARDS, WISCONSIN  
CENTRALIA HYDROELECTRIC PROJECT  
PROJECT MAP

400' 200' 0 400' 800'

JULY 15 1991 FERC LICENSE NO. 2255 SHEET G-4

2017 ANNUAL PURPLE  
LOOSESTRIFE SURVEY (BLUE)

2016 ANNUAL PURPLE  
LOOSESTRIFE SURVEY (RED) Figure 1c

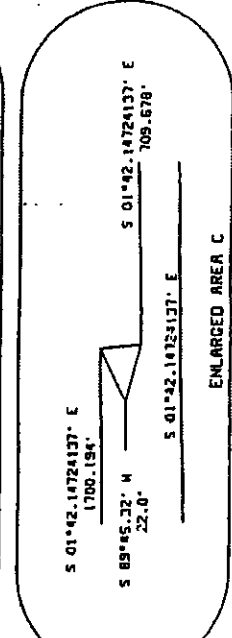
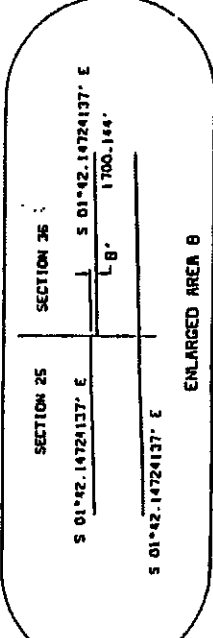
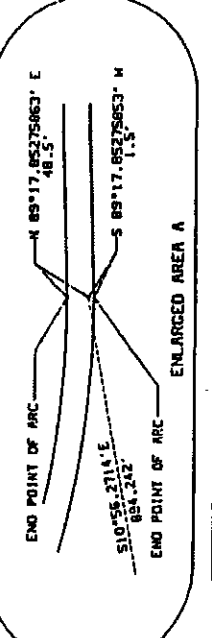
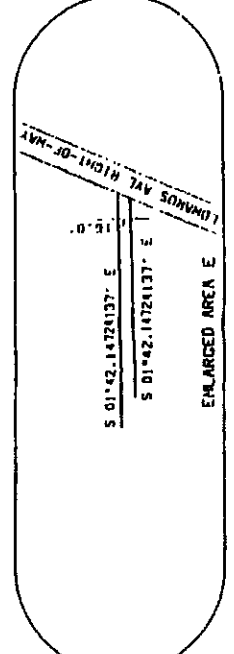
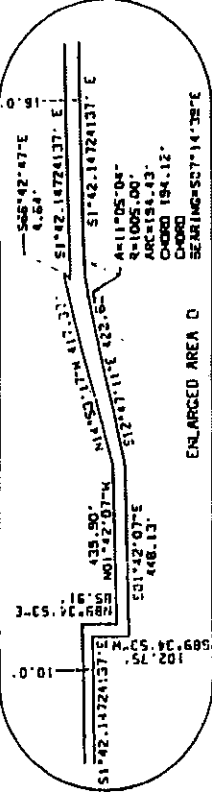
BH L-85-2 PVC BRASS DISC AT WEST END  
OF PORT EDWARDS DAM  
STAMPED 963.015

BH L-85-3 BRASS DISC AT NE CORNER  
OF PORT EDWARDS HYDRO-PLANT  
BLDG STAMPED 972.182

THIS DRAWING IS A PART OF THE APPLICATION  
FOR LICENSE MADE BY THE APPLICANT  
THIS DATE, DAY OF MONTH, YEAR.

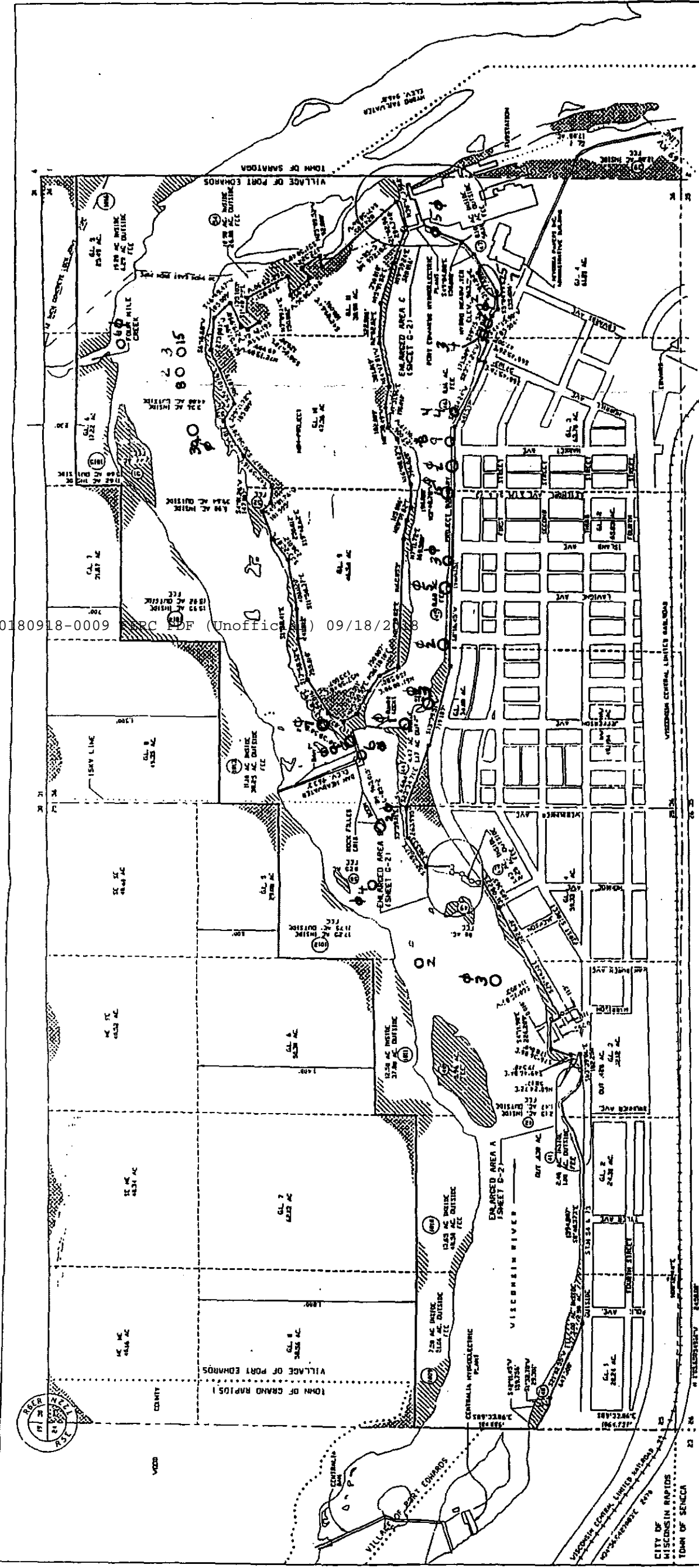
36 PARCEL NO.  
2"x30" STEEL SHAFT  
NOTE: 68KV TRANSMISSION LINE IS 3 FEET  
LEFT OF TRANSIT LINE SHOWN

36 FEE INSIDE OF PROJECT  
36 FEE OUTSIDE OF PROJECT



AUTOCAD RELEASE 10.0  
PLOT SCALE: 1"=400'  
BY: OMB, NO. 13752-CMM-59043

20180918-0009 PC OF (Unofficial) 09/18/2018



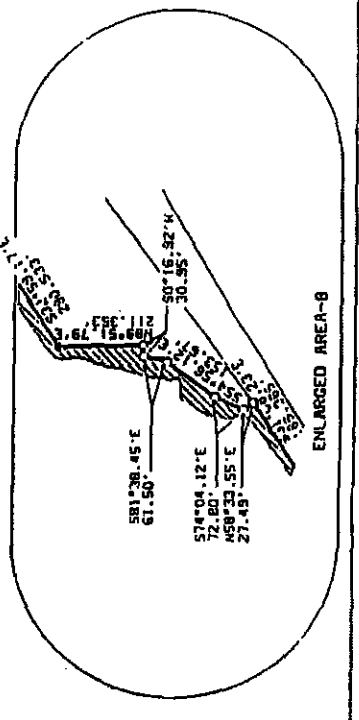
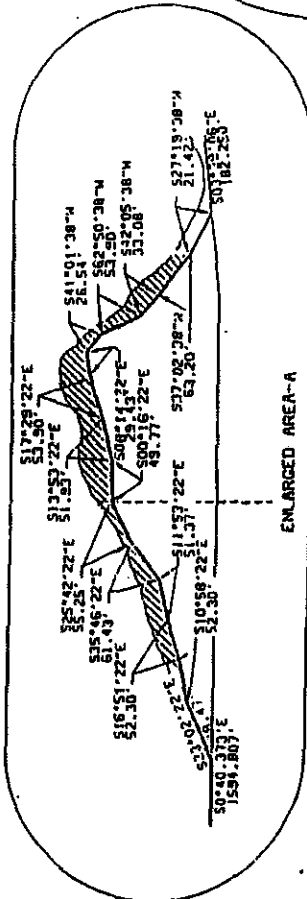
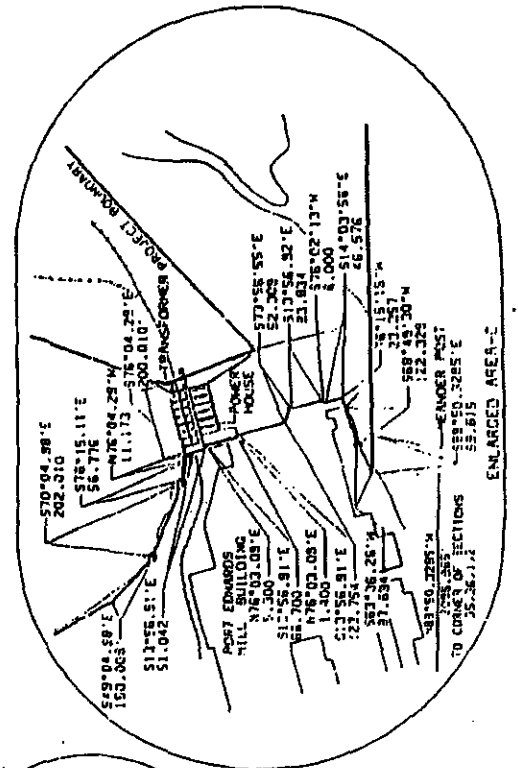
FEE INSIDE OF PROJECT  
 FEE OUTSIDE OF PROJECT  
 PARCEL NO.

0 3/4" GALVANIZED IRON PIPE  
 6 2"x2" STEEL SHAFT

BM L-85-2 P.W.C. BRASS DISC AT WEST END  
 OF PORT EDWARDS DAM  
 STAMPED 582015  
 BM L-85-3 BRASS DISC AT NE CORNER  
 OF PORT EDWARDS HYDRO-PLANT  
 B.M.C. STAMPED 972182

NEKODSA PAPERS INC.  
 PORT EDWARDS, WISCONSIN  
 PORT EDWARDS HYDROELECTRIC PROJECT  
 EXHIBIT C  
 PROJECT MAP  
 400' 200' 0 400' 800'

JULY 15, 1991 FERC LICENSE NO. 2291 SHEET C-2  
 2017 ANNUAL PURPLE LOOSTRIPE  
 SURVEY (BLUE)  
 2019 ANNUAL PURPLE LOOSTRIPE  
 SURVEY (RED)



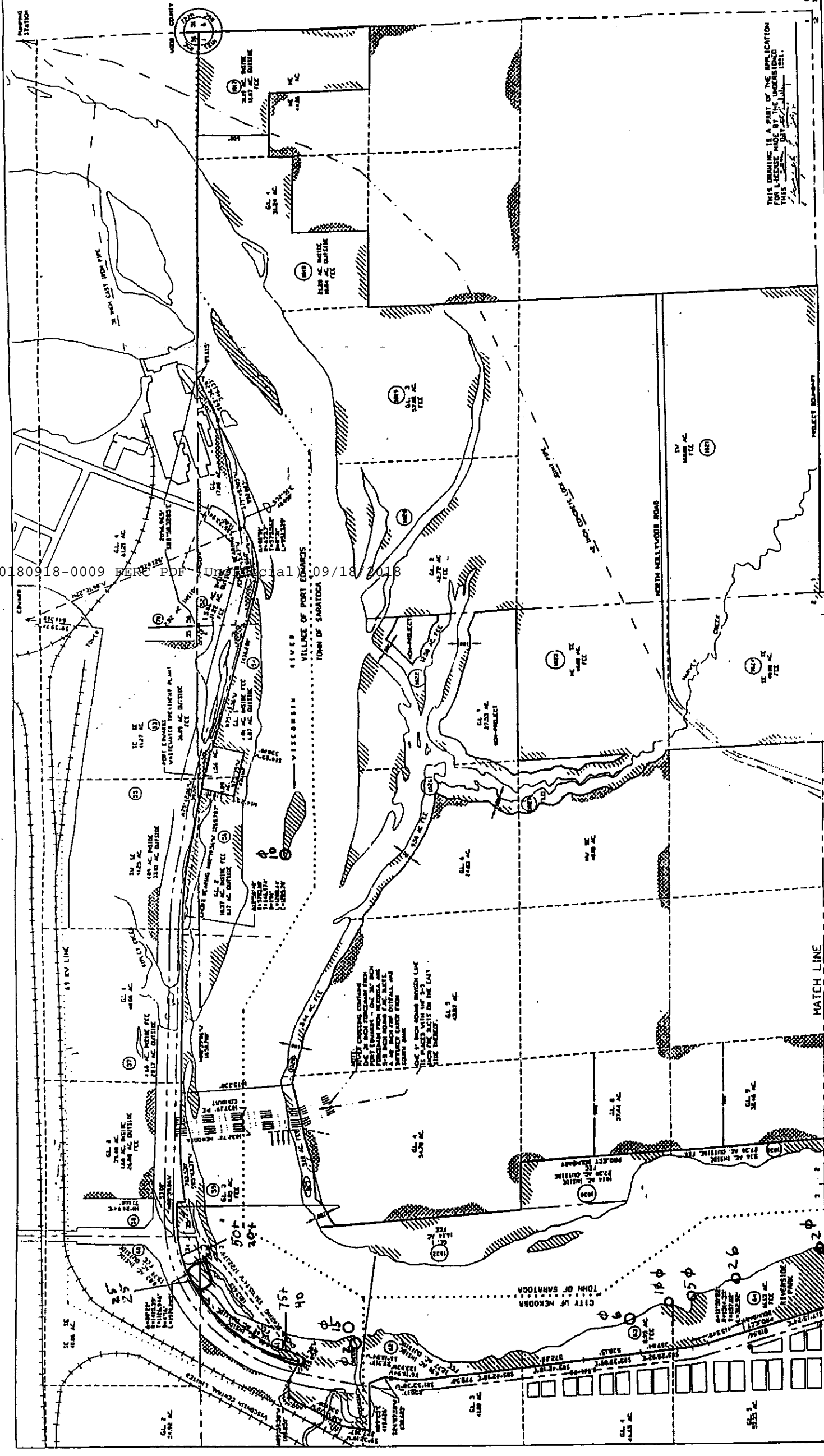
THIS DRAWING IS A PART OF THE APPLICATION  
 FOR LICENSE MADE BY THE UNDERSIGNED  
 ON OCTOBER 12, 1993

COUNTY: WOOD STATE: WISCONSIN

Figure 2a

AUTOCAD  
 RELEASE 10.0  
 PLOT SCALE: 1"=400'  
 INY. DWG. NO. 1752-CWU-59045

20180918-0009 HERE PDF Universal 09/18/2018



THIS DRAWING IS A PART OF THE APPLICATION FOR LICENSE MADE BY THE UNDERSIGNED THIS DATE: JULY 15, 1991.

NEKOOSA PAPERS, INC.  
 PORT EDWARDS, WISCONSIN  
 NEKOOSA HYDROELECTRIC PROJECT  
 UNIT #1  
 PROJECT MAP  
 400' 200' 0 400' 800'

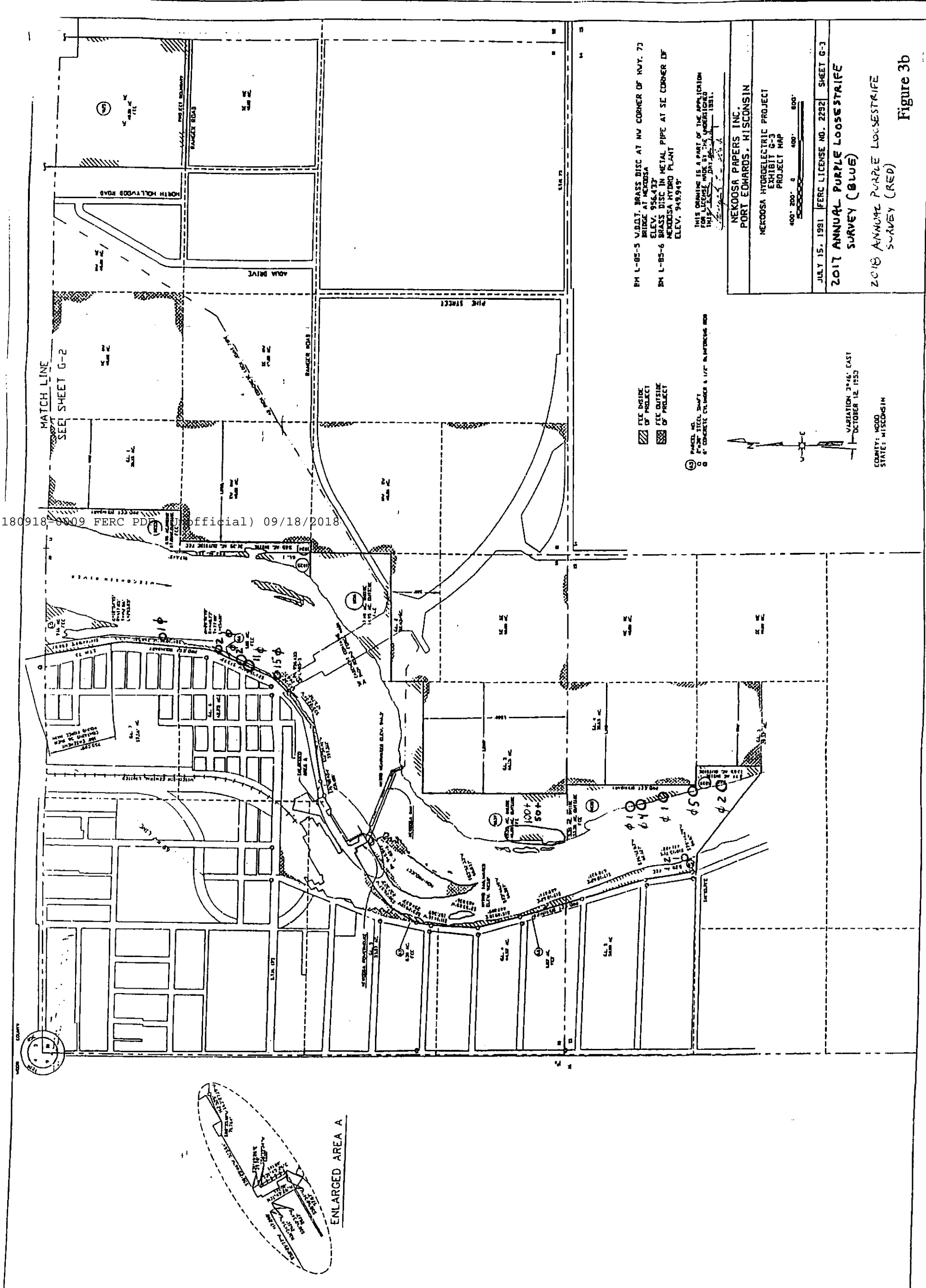
JULY 15, 1991 FERC LICENSE NO. 22921 SHEET G-2  
 2017 ANNUAL PURPLE LOOSE STRIFE SURVEY (BLUE)  
 2018 ANNUAL PURPLE LOOSE STRIFE SURVEY (RED) Figure 3a

VARIATION 3°46' EAST  
 OCTOBER 12, 1953  
 COUNTY: MOOD  
 STATE: WISCONSIN

NUTCRACK  
 RELEASE 10.0  
 PLOT SCALE: 1"=400'  
 BY: DHC, NO. 17352-CUM-59047



20180918-0009 FERC PD (Official) 09/18/2018



BM L-85-5 VADOT BRASS DISC AT NW CORNER OF HWY. 73 BRIDGE AT NEKOOSA ELEV. 956.473  
 BM L-85-6 BRASS DISC IN METAL PIPE AT SE CORNER OF NEKOOSA HYDRO PLANT ELEV. 949.949

THIS DRAWING IS A PART OF THE APPLICATION FOR LICENSE MADE BY NEKOOSA PAPER CO. UNDER LICENSE NO. 13752-CUWU-55048 DATED OCTOBER 12, 1951.

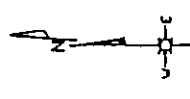
NEKOOSA PAPERS INC.  
 PORT EDWARDS, WISCONSIN  
 NEKOOSA HYDROELECTRIC PROJECT  
 EXHIBIT G-3  
 PROJECT MAP  
 400' 200' 0 400' 800'

JULY 15, 1991 FERC LICENSE NO. 2292 SHEET G-3  
 2017 ANNUAL PURPLE LOOSESTRIFE SURVEY (BLUE)  
 2018 ANNUAL PURPLE LOOSESTRIFE SURVEY (RED)

Figure 3b

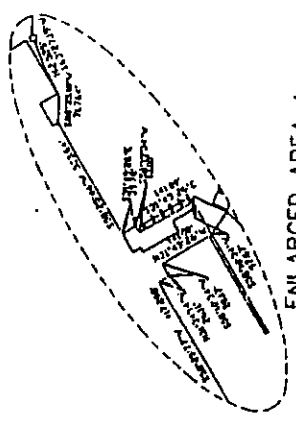
FILE INSIDE OF PROJECT  
 FILE OUTSIDE OF PROJECT

PAVED W/ 4" CONCRETE CURB AND 1/2" REINFORCING BAR  
 10" PUNCH STEEL SHAWT  
 6" CONCRETE CURB AND 1/2" REINFORCING BAR



VARIATION 3°46' EAST  
 OCTOBER 12, 1950

COUNTY: MOOD  
 STATE: WISCONSIN



ENLARGED AREA A

AUTOCAD  
 RELEASE 10.0  
 PLOT SCALE: 1"=400'  
 BY: DMS: NO. 13752-CUWU-55048

Document Content(s)

15041873.tif.....1-9