



North Lakeland Discovery Center



Published by Licia Kuckkahn Johnson [?] · February 13 · 🌐

What is our Water Program Coordinator doing in the winter? Thinking a lot about water in its solid state, formally known as “ice”!

Did you know there are different types of ice? The season will usually start with “black ice.” The ice isn’t actually black, but rather it is transparent because it has little to no air bubbles. The black you are seeing is the water beneath the ice. Black ice is the strongest of all types of ice. Some black ice results in the phenomenon of “blue ice.” This is when ice is so transparent that light can penetrate far into the ice. The longer red wavelengths of light are absorbed first, while the shorter blue wavelengths are scattered – and are what you see. “White ice” forms when the ice begins to incorporate air bubbles. White ice can also be frozen snow pack. Because white ice incorporates air, it is not as strong as black ice.





North Lakeland Discovery Center shared a photo.



Published by Licia Kuckkahn Johnson [?] · February 16 · 🌐

Last week Discovery Center program staff Annie, Licia and Emily visited the UW-Stevens Point College of Natural Resources career fair. We have been attending this career fair for well over 10 years and have had many great interns come from this wonderful school!

We met several great potential interns throughout the day. Applications for our summer internships as a Naturalist or in Water Monitoring are due March 5th. Check out our website for more information!

<https://discoverycenter.net/about-discovery-cen.../employment/>



UWSP College of Natural Resources

February 12 · 🌐

👍 Like Page

North Lakeland Discovery Center attended the 2018 CNR Career Fair at the University of Wisconsin-Stevens Point.



North Lakeland Discovery Center



Published by Licia Kuckkahn Johnson [?] · February 20 · 🌐

Fun times on the ice for our ice fishing basics class this weekend taught by Director John and Grounds Coordinator Ryan! Thanks to volunteer Tom for helping out! Beautiful day on the ice, even caught a few fish! Our lake health is so important, we offer a variety of programming to train you in watching for the health of our lakes- check out our schedule of events this summer when our guide comes out!



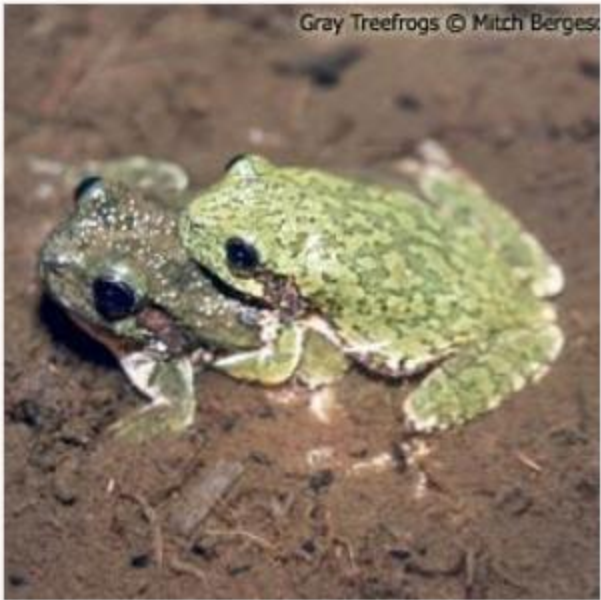


North Lakeland Discovery Center



Published by Licia Kuckkahn Johnson [?] · March 25 · 🌐

It sure looks like winter out there, but soon enough ponds will open up and we will once again hear the sweet sounds of frogs! Our friends at the Wisconsin Frog and Toad survey have a sample of all the frog calls, so you can test your knowledge and be ready when you hear that first "PEEP"! <http://wiatri.net/inventory/frogtoadsurvey/WIfrogs/>



WFTS - Wisconsin Frogs



WFTS - Wisconsin Frogs



North Lakeland Discovery Center



Published by Licia Kuckkahn Johnson [?] · April 5 · 🌐

Habitat degradation is one of the greatest threats to wildlife. Join us for our new April series: Humanity for Habitats. Each Saturday we will explore different ways for you to help build, restore, and maintain habitat for different groups of animals.

Please register early and before program deadlines so we have enough supplies to build with!

Please note the first two programs had to be switched and do not match the dates in our program guide!

April 7: Bats and Bat Roost Building (pre reg: 4/5)

April 14: Waterfowl & Wood Duck House Building (pre reg: 4/12)

April 21: Backyard Birds and Bluebird House Building (pre reg: 4/19)

April 28: Fish Sticks/Native Shoreline Gardens (pre reg: 4/26)

Check out the programs and register here: <https://nlcd.z2systems.com/.../publicacc.../eventCalendarBig.jsp>



NLDC.Z2SYSTEMS.COM

Discovery Center

To enrich lives and inspire an ethic of care for Wisconsin's Northwoods,...



North Lakeland Discovery Center



Published by Licia Kuckkahn Johnson [?] · April 7 · 🌐

With new snow comes fresh critter tracks! On the way into work, these were seen on the Trout River going under Hwy H. Can you guess who it was???





North Lakeland Discovery Center



Published by Licia Kuckkahn Johnson [?] · April 14 · 🌐

Happy National Citizen Science Day! Citizen Science Day is an annual event to celebrate and promote all things citizen science: amazing discoveries, incredible volunteers, hardworking practitioners, inspiring projects, and anything else citizen science-related!

Did you know the Discovery Center coordinates several citizen science projects, including lake level monitoring, bat population surveys, aquatic invasive species monitoring, monarch tagging, wolf howls, and much, much more! Each project is coordinated by one of our program staff members- Emily Heald, Licia Johnson, or Annie McDonnell, and data are collected during educational programs or by volunteers on their own time.

These projects are NOT possible without the citizens who are excited about their subjects, and go out in the field to collect the data! Here at the Discovery Center we are lucky to work with hundreds of volunteers who spend their time with our citizen science programs. From the sky to the lake, a big part of what we do here revolves around monitoring the natural world around us.





North Lakeland Discovery Center



Published by Lynn Wagner Wildes [?] · April 16 · 🌐

Do you feel like this winter is never-ending? That you will never again see green grass or open water? That mosquitoes are creatures that exist only in nightmares? So does our Water Program Coordinator, so she did a little research through the North Temperate Lakes Long Term Ecological Research Network on historical ice-out dates. Check out the graph below to see how we compare to the historical ranges of Sparkling Lake in Boulder Junction. Dates on the left are in "Julian dates," which is simply a continuous count of days starting on January 1. April 16 is Julian day 106. What is your prediction for ice-out this year?





North Lakeland Discovery Center updated their cover photo.



Published by Licia Kuckkahn Johnson [?] · May 1 · 🌐



 639 people reached

Boost Unavailable



North Lakeland Discovery Center

Published by Emily Heald [?] · May 2 · 🌐



Here is an excellent opportunity to celebrate the start of the ice-free season: Learning about all the little animals living in our lakes that are not visible to the naked eye! Join us tomorrow (Thursday, 5/3) at noon at the Winchester Library for our Hidden Lake Creatures program- a fun and interesting program about these creatures and their importance in our lakes. Live specimens will be joining us! Program is free with donations appreciated.





North Lakeland Discovery Center

Published by Emily Heald [?] · May 4 · 🌐



Did you know we have these prehistoric fish right here in Vilas County? Sturgeon are a species of fish threatened by over harvesting, dam construction, and industrial pollution. There is so much you can do to help protect this species! Check out the link below to read more about sturgeon restoration efforts in Northern Wisconsin. If you are interested in volunteering for the "Sturgeon Watch" program, especially on the Manitowish River, contact DNR Fisheries Biologist Zach Lawson at 715-476-7847.

https://drive.google.com/.../1TmJ7G6H3S8f_ZI6PIZcLx1oSy-.../view





North Lakeland Discovery Center added an event.



May 9 · 🌐

Join us on a fun filled day on the Manitowish Chain of Lakes for a scavenger hunt. This event is sure to test and increase your knowledge and awareness of Northwoods ecology and history. Participants will be provided with a list of clues, prompts, and riddles on the day of the rally. Participants must provide their own boat, and obey all DNR safety rules. We will host an evening BBQ (cost included with registration!) where we will announce awards for the boat with the best decorations/themes/costumes, highest point earners, and best pictures/videos. Please contact the Discovery Center for more details! Cost is \$75 per team, team limited to weight limits of your boat.



SAT, JUN 23

Float your Boat Trivia Rally

North Lakeland Discovery Center · Manitowish Waters,...

★ Interested

Games



North Lakeland Discovery Center



Published by Emily Heald [?] · May 10 · 🌐

Saturday marked our first canoe trip of the year! Annie and Emily had a great time leading Meandering the Manitowish. We saw many eagles, song birds, waterfowl, snapping turtles, and lots of beaver activity!





North Lakeland Discovery Center



Published by Licia Kuckkahn Johnson [?] · May 25 · 🌐

Staff member Emily found this little guy walking across a path at the Discovery Center- students we had on campus also found a few yesterday.

Painted turtles have a neat adaptation where they hatch in the fall underground, but are able to remain underground that first winter and hibernate. Their bodies produce a special antifreeze, for just this first winter, that allows them to hibernate out of water.

In spring they emerge and head for the lakes! We helped this little one out and brought him to Statehouse Lake 😊

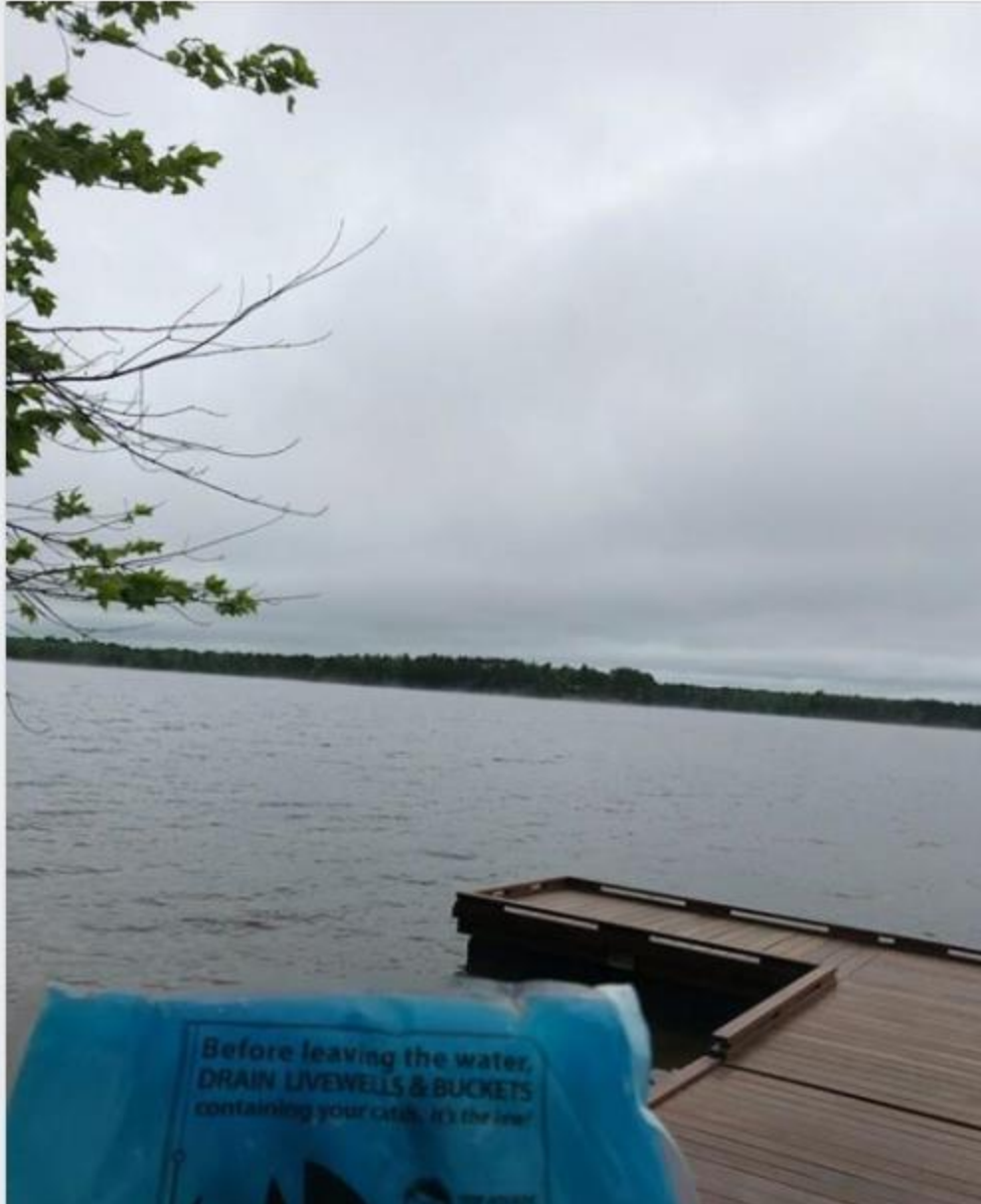




Published by Emily Heald [?] · June 1 ·

The statewide Drain Campaign this weekend reminds fishermen that water left in livewells, bait buckets and bilges can transport fish diseases and aquatic invasive species between lakes, rivers and streams. To protect our waters, draining all equipment before leaving a boat launch or fishing access site is required in Wisconsin. This weekend to promote the message, our Water Monitoring Interns are handing out free ice packs at the boat landings to help keep your catch fresh!

#JustDrainIt





North Lakeland Discovery Center

Published by Emily Heald [?] · June 8 · 🌐



Our newest shoreline gardens came together quickly! Fences were built 6/2 by our wonderful NLDC volunteers, and plants went in on Monday thanks to AVW kindergartners! Thanks also to the WDNR's Healthy Lakes grant for funding this project.





North Lakeland Discovery Center



Published by Emily Heald [?] · June 15 · 🌐

'Tis the season for turtles crossing the road to find a place to lay eggs. If you see a turtle crossing, and decide to help it out, make sure you put the turtle over to the side of the road it is moving towards.

The Wisconsin Turtle Conservation Program has a great online tool to report turtle crossings and turtle mortalities on roads. They also have a great video on how to help turtles (including snapping turtles!) cross the roads:

<http://wiatri.net/inventory/witurtles/>



WIATRI.NET

Wisconsin Turtle Conservation Program

The Wisconsin Turtle Conservation Program (WTCP) is a citizen-based monitoring program designed to help catalog species' statewide distributions more thoroughly and to document

👤 744 people reached

Boost Post



North Lakeland Discovery Center updated their cover photo.



Published by Emily Heald [?] · June 23 at 1:04 PM · 🌐



👍 100 🗨️ 1 📷 1



North Lakeland Discovery Center



Published by Emily Heald [?] · June 27 at 11:15 AM · 🌐

With summer in full swing, the Water Team has been busy! From monitoring for aquatic invasive species (AIS), hand pulling curly-leaf pondweed (a local AIS of concern), and raising beetles that eat only purple loosestrife (another AIS of concern in our area), we have been busy!





North Lakeland Discovery Center



Published by Emily Heald [?] · July 7 at 9:23 AM · 🌐

Did you see our water program highlighted on WJFW Newswatch 12 this week?

Check out this link to watch interviews from Johnny and Emily

<http://www.wjfw.com/stories.html...>



WJFW.COM

WJFW - Invasive species cause concern

Few people would know from looking at Eurasian Water Milfoil that it's...



North Lakeland Discovery Center



Published by Emily Heald [?] · July 18 · 🌐

As the summer gets warmer, the focus of the water team is changing to purple loosestrife - a wetland invasive species in this area. We've been busy releasing "cella" beetles, which eat only purple loosestrife, and are a great natural way to combat invasive species.



👤 692 people reached

[Boost Post](#)

👍❤️ 32

1 Comment 2 Shares



North Lakeland Discovery Center



Published by Emily Heald [?] · August 10 at 9:41 AM · 🌐

7 new interpretive signs were installed yesterday! Come on down to our campus to check them out! Be sure to hit up the gardens behind our Nature Nook, the restoration garden, and the lakeshore/swimming area!



👤 1,001 people reached

Boost Post



North Lakeland Discovery Center



Published by Emily Heald [?] · August 13 at 9:00 AM · 🌐

Happy Water Week! This week our programming is focusing on WATER! An extremely important resource, especially in our area where we have one of the largest concentrations of freshwater lakes in the world!

Check out our website to register for this week's programs: Aquatic Invasive Species Identification Training on Tuesday the 14th, Eco-Discoverers Lake Rangers on the 14th, Eco-Explorers Aquatic Safari on the 15th, and the Palmer-Tenderfoot Canoe Trip on the 18th.



👤 750 people reached

Boost Post



North Lakeland Discovery Center



Published by Emily Heald [?] · August 15 at 9:00 AM · 🌐

Happy Water Week! Today we are thankful for Statehouse Lake, the lake our center is situated around! This small lake, just barely over 20 acres, packs a punch! We use it as a classroom for programs, as a place to relax, and as a place to recreate.



👤 498 people reached

Boost Post



North Lakeland Discovery Center



Published by Emily Heald [?] · August 17 at 9:00 AM · 🌐

For our final Water Week post, we want to give thanks to our water interns. From aquatic invasive species monitoring and control work, to educating the public on water issues, our water program would not be a pinnacle resource to the community without them. Thank you to Johnny, Braden, and Colby!



👤 565 people reached

Boost Post



North Lakeland Discovery Center

Published by Emily Heald [?] · August 24 at 9:00 AM · 🌐

Did you know some of our northern waterways house freshwater sponges? These algae-looking creatures are actually filter-feeding animals. They are sensitive to water conditions, and their presence therefore indicates high water quality. This sponge was found by our water program coordinator in the Manitowish River.





northlakelanddiscovery

northlakelanddiscovery Paddle season is here! Check out our website to sign up for one of our many guided canoe trips #NLDC #northlakelanddiscoverycenter #optoutside #canoe #canoeing #upnorth



45 likes

MAY 2

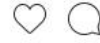
Add a comment...





northlakelanddiscovery

northlakelanddiscovery The "office view" for the water team this summer
#northlakelanddiscoverycenter #NLDC
#lakelife #optoutside



30 likes

JULY 2

Add a comment...





northlakelanddiscovery
North Lakeland Discovery Center

northlakelanddiscovery Cicadas are the sound of the summer! We found this larval cicada while working on a shoreline garden today. Good luck, buddy! #NLDC #northlakelanddiscoverycenter #optoutside #cicada

23 likes

JULY 18



northlakelanddiscovery
North Lakeland Discovery Center

northlakelanddiscovery Who is taller, naturalist intern Frankie or the rain garden cup plants? #NLDC #northlakelanddiscoverycenter #raingarden #optoutside

34 likes

AUGUST 14



northlakelanddiscovery
Manitowish Waters, Wisconsin

northlakelanddiscovery Do you know what the bottom of your lake looks like? Our water crew samples bottom sediment as a means of monitoring for spiny water flea, an aquatic invasive species.
#northlakelanddiscoverycenter #NLDC #limnology #aquaticinvasivespecies



14 likes

AUGUST 17



North Lakeland Discovery Center: Working with you to keep our lakes healthy

Boating, fishing, canoeing and kayaking are some of water-based activities abundantly available in the Northern Highland-American Legion Forest, which boasts the highest concentration of lakes in Wisconsin. Visitors to the area may not be aware that the North Lakeland Discovery Center plays a key role in encouraging volunteer stewardship of these valuable water resources.

The Water Program at Discovery Center serves as a pinnacle resource in Vilas County for aquatic invasive species (AIS) education and management. Since 2010, NLDC has partnered with the Manitowish Waters Lakes Association, Winchester Town Lakes Committee, and Towns of Manitowish Waters, Boulder Junction, and Winchester to fight the introduction, establishment, and spread of AIS in western Vilas County.

The Discovery Center leads educational AIS training twice a month beginning at Koller Park in Manitowish Waters. (Pre-registration required; www.discoverycenter.net). Volunteers monitor the Manitowish Chain and other area lakes for invasives, and report suspected locations to the Discovery Center for mapping and recording. Summer interns also play a vital role, and monitor, report, and hand harvest AIS. If you come

Please be sure to mark your exact location on the water.

The Discovery Center also manages several Wisconsin DNR grants to create lake management plans for over 20 lakes. A lake management plan is essentially a step-by-step guide for a lake association, town, or interested entity on how to keep a lake healthy.

One of the most important people who can keep our Northern lakes healthy for generations to come is you! North Lakeland Discovery Center interns and volunteers staff boat landings and local festivals to educate boaters on keeping AIS out of the lakes. As we go through the summer season, the following tips will help you prevent the spread of AIS in our beautiful Northern Highland-American Legion State Forest:

1. Check your boat!

a. Before you launch and when you take out, check your boat and trailer for attached plants, dirt, soil, etc. Don't forget the bottom of the boat, prop, anchor, and ropes/chains. Remove anything you find and dispose in a waste receptacle. Drain live wells and any other water holding tank after you leave the lake. Ice your fishing catch, do not transport it in water. Also do not transport water between lakes via bait buckets.

2. Rinse off equipment or let it dry completely before entering another lake. This includes skis, tow rope, tubes, rafts, and sand toys. This is especially important in lakes infested with spiny water flea, which is nearly invisible to the naked eye.

3. Never release plants or animals into different water bodies than they came from.

4. Talk to others about the importance of AIS prevention!

If you are wondering if the lake you are visiting has AIS, or looking for more information, call or email Emily, water program coordinator, at 715-543-2085 or water@discoverycenter.net.

MWLA elects officers and directors at 26th annual meeting

The Manitowish Waters Lakes Association held its 26th annual meeting with continental breakfast on Saturday, July 28 at the North Lakeland Discovery Center. The attendees were welcomed by MWLA president Bob Becker, who described the Association's accomplishments throughout the previous year and explained goals for the upcoming year. The major goal continues to be the partnership with the North Lakeland Discovery Center, WDNr, the Towns of Manitowish Waters and Boulder Junction to protect the waters from aquatic invasive species. Becker also reported on the damage bladder boats can do to shorelines and animal

habitat. He encouraged people not to use them on the Chain and mentioned it is not safe for people, especially children, to sit on the front of boats to dangle their feet while the boat is moving.

During the business portion of the meeting, the following officers were elected for one-year officer terms: Bob Becker, president; Paul Puccinelli, vice president; Angela Dombrowski, secretary; and Eleanor Butler, treasurer. Gale Wolf was elected as a new director for a one-year term; returning directors for one-year terms: Tom Kramer, Jody Miller, and Bob Stowers. Directors elected for two-year terms: Mary Bowlius, Greg Holt,

Deip Schaefer, and Dennis Wilin. Karen Dixon will continue as immediate past president.

Board member Tom Kramer reported on the DNR's Fish Sticks Program that is providing grants for the placement of felled trees off shoreland properties for fish spawning habitat. Kramer, who is also chair of Valleys for Tomorrow, reported on the efforts of the WFT, DNR and the tribes to work together to stock the MW Chain with extended growth walleyes. Emily Heald, water program coordinator at the Discovery Center, updated the membership on the Lake Management Plan for the Manitowish Chain of Lakes

and the hand-pulling of curly leaf pondweed (aquatic invasive) that is growing in several areas of the Chain. Heald encouraged everyone to become involved with AIS monitoring activities to help offset the cost of the grants with in-kind volunteer hours. She also described efforts to control purple loosestrife with the use of "cella" beetles and cutting tops of flowering PL plants.

Summer water interns Colby Durte and Braden Westerhoff showed samples of curly leaf pondweed, provided information on how to monitor for AIS, and gave information on the programs that are available through the Discovery Cen-

ter that teach how to monitor for AIS.

The membership also heard a presentation from Laura Hayes (WDNR) who reported on the Firewise Program that helps communities and organizations play a role in preventing, preparing and planning for wildfire.

Next year's MWLA annual meeting will be held again at the North Lakeland Discovery Center on Saturday, July 27, 2019. For membership information call, 715-543-8401 or go to the MWLA web site at www.mwla.com. Like the Association Facebook at www.facebook.com/ManitowishWatersLakesAssociation.

Manitowish Waters Lakes Association annual meeting on July 28

Get to know the neighbors on the Manitowish Waters Chain by attending the 26th annual meeting to be held at the North Lakeland Discovery Center from 9 to 11:30 a.m. on Saturday, July 28. Please note the time change and save the date.

Sign-in starts at 8:30 a.m. with the business meeting beginning promptly at 9. A continental breakfast will be provided, including bagels and cream cheese, an assortment of breakfast rolls, fruit, coffee and juice.

There will be a short business meeting to elect directors and officers followed by three presentations: Emily Heald will give an AIS update; Tom Kramer will report on Walleyes for Tomorrow and fish habitat; and Laura Hayes from the DNR will talk about the Firewise Program.

There will be an opportunity to buy tickets for the raffle of unique items, one of which is an area airplane ride for two, donated by Tom Ahonen. Remember to bring address labels for the raffle tickets.

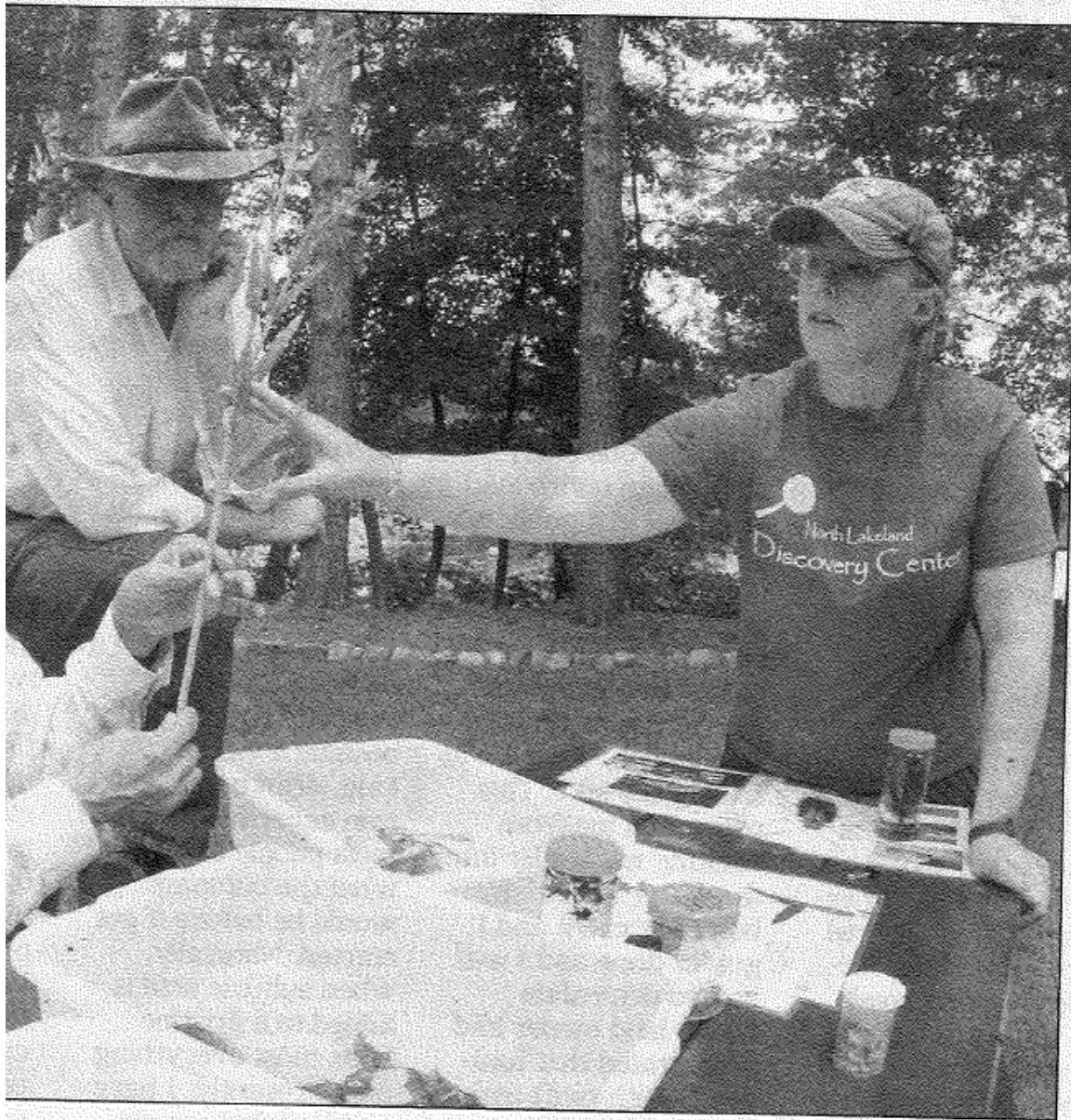
For more information about the annual meeting, call 715-543-8141. To be-

North Lakeland Discovery Center

July 28, 9 a.m. to noon, MW Lakes Association annual meeting and picnic. Held at the Discovery Center, this event is open to the public. For more information, call 715-543-8401 or go to www.mwlakes.com.

**MANITOWISH WATERS:
MW LAKES ASSOCIATION ANNUAL MEETING
AND CONTINENTAL**

BREAKFAST- 9-11:30
a.m. North Lakeland Discovery Center. Sign-in at 8:30 a.m. Raffles and breakfast. Open to the public. Info. 715-543-8141 or www.mwlakes.com



DEAN HALL/LAKELAND TIMES

Heald shows Cindy and Mike Moriarity how to identify the aquatic invasive purple
Lakeland Discovery Center program on Aquatic Invasive Species (AIS) Identification
Koller Park in Manitowish Waters.

North Lakeland Discovery Center: Working to keep our lakes healthy

The Northwoods is defined not only by its abundant forests but also by its water. This unique land is punctuated by one of the highest concentrations of inland freshwater lakes in the world, intersected by streams and rivers. Whether paddling a remote river, fishing a clear lake, or catching tadpoles with grandkids, water is an important part of what visitors and residents alike consider the "Up North" experience.

In Vilas County alone, there are more than 1,320 lakes, more than any other county in Wisconsin. But many Vilas County lakes are threatened by Aquatic

Invasive Species (AIS).

The Water Program at Discovery Center serves as a key resource in volunteer stewardship in Vilas County for AIS education and management. Since 2010, NLDC has partnered with the Manitowish Waters Lakes Association, Winchester Town Lakes Committee, and Towns of Manitowish Waters, Boulder Junction, and Winchester to fight the introduction, establishment, and spread of AIS in western Vilas County.

The Discovery Center leads educational AIS training twice a month beginning at Koller Park in Manitowish Waters. (Pre-registration required; www.discoverycenter.net).

Volunteers monitor the Manitowish Chain and other area lakes for invasives, and report suspected locations to the Discovery Center for mapping and recording. Summer interns also play a vital role, and monitor, report, and hand harvest AIS. Those that suspect AIS during water activities may send a photo to water@discoverycenter.net. Be sure to mark the exact location on the water.

The Discovery Center also manages several Wisconsin DNR grants to create lake management plans for over 20 lakes. A lake management plan is essentially a step-by-step guide for a lake

association, town, or interested entity on how to keep a lake healthy.

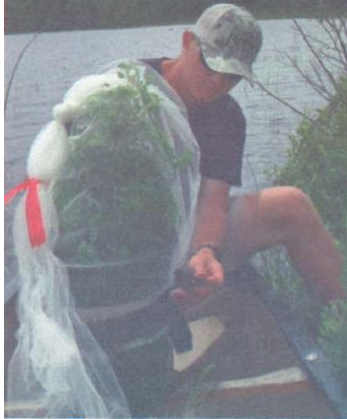
Demonstration gardens at the Discovery Center include those planted as part of the Wisconsin DNR's Healthy Lakes Program. The program goal is to "protect and improve the health of our lakes by increasing lakeshore property owner participation in habitat restoration and runoff and erosion control projects."

If you are wondering if the lake you are visiting has AIS, or looking for more information, call or email Emily, water program coordinator, at 715-543-2085 or water@discoverycenter.net.



PROTECTING OUR WATERS

North Lakeland Discovery Center is proud to partner with area Towns and Lakes Associations to fight the introduction, establishment, and spread of Aquatic Invasive Species (AIS) in western Vilas County.



North Lakeland
Discovery Center

715-543-2085
www.DiscoveryCenter.net



DEAN HALL/LAKELAND TIMES

ICE FISHING 101

Ryan Wahlgren shows Chicago school teacher Mara Benz how to use an electronic fish finder during a North Lakeland Discovery Center Wisconsin Ice Fishing Basics class on Saturday, Feb. 17, on Statehouse Lake in Manitowish Waters. Benz is looking forward to sharing the experience with her students when she returns to Chicago.



DEAN HALL/LAKELAND TIMES

ICE FISHING BASICS

John Heusinkveld demonstrates the use of an ice fishing gaff during a Wisconsin Ice Fishing Basics class on Saturday, Feb. 17, at the North Lakeland Discovery Center in Manitowish Waters.

Discovery Center participates in DNR's Healthy Lakes Program – and you can, too!

MANITOWISH WATERS - What do fallen trees and healthy lakes have in common? More than you'd think! The North Lakeland Discovery Center in Manitowish Waters recently partnered with the Manitowish Waters Lakes Association and Walleyes for Tomorrow to increase the amount of habitat in lakes via "fish sticks."

Fish sticks are single trees or groups of trees harvested from upland areas that are brought to the lakefront, anchored to the shoreline, and partially or fully sub-

merged near the shoreline. The trees provide habitat to panfish, game fish, birds, turtles, insects and more. Fish sticks can also assist with shoreline erosion by protecting the shore from wave action.

Fish sticks are needed in lakes as development on lakeshore properties eliminates the self-perpetuating benefits of fallen trees into lakes. When you clear the land to build a house or create a viewing corridor, those trees are no longer available to eventually fall into a lake for habitat.

Once a tree falls into a lake, it

immediately provides habitat to fish, such as bluegills and other sunfish, to hide from predators.

Other fish build nests near submerged trees to protect eggs from predators. Waterfowl and turtles use branches above the water to bask in the sun. Some bird species, such as loons, benefit from fish sticks because the trees provide habitat for their food. Over time, algae begins to grow on the tree, which provides food for smaller fish and insects. Fallen leaves and needles provide habitat for critters that live on lake bottoms, such as

insects and snails, which in turn provide food for the fish.

This habitat restoration project was funded by the Wisconsin Department of Natural Resources' Healthy Lakes Program, which provides grant funding to lake groups for habitat restoration, and runoff and erosion control projects. Volunteer power for the project was provided by the Walleyes for Tomorrow group and Manitowish Waters Lakes Association, with project leadership provided by Tom Kramer.

If you are interested in learning more about how you can improve the health of your lake, visit www.healthylakeswi.com

Vilas County Represents at the 40th annual Wisconsin Lakes Partnership Convention in Stevens Point

Many people from Vilas County who live on and work for lakes heeded the call to attend the statewide Lakes Partnership Convention April 18-20. As the county with the most lakes in Wisconsin (more than 1,300), Vilas County was represented by over 50 people who care for our lakes. Over 40 of them are citizens from lake associations and districts learning more about how their lakes work as well as how to be more effective at managing their organizations. There were also many staff who work on Vilas County waters from the Wisconsin Department of Natural Resources, University of Wisconsin — Extension Lakes, non-governmental organizations, University researchers, and private contractors. All the staff from the Vilas County Land & Water attended and made presentations about Watershed management, AIS management, and the development of economic data associated with lakes.

The theme of the Convention was "Heeding the Call" and celebrated the 40 year history of the Loon Watch program, which makes Wisconsin one of the leaders in supporting Loon research



BECKIE GASKILL/LAKELAND TIMES

Many Vilas County lake people attended the Wisconsin Lakes Partnership Convention in Stevens Point. Most are citizens who work long and hard to both learn about their lakes and spend many hours protecting and managing them.

in the United States. Additional species of interest were frogs, fish, bats, birds, blue-green algae, and Aquatic Invasive Species. Attendees learned how to plan at the watershed level and how to use those plans to protect and restore specific waterbodies. Another stream of concurrent sessions was focused on "People, Policy & Politics."

The Wisconsin Lakes Partner-

ship Conventions is supported by the WDNR, UWEX-Lakes, and Wisconsin Lakes. This partnership is a statewide, multi-faceted effort that includes regional, tribal, non-profit, and Federal partners. The goal is to continue to protect and preserve state waters and support those meeting the challenges that come with the management and stewardship of Wisconsin's lakes.