



**Wisconsin Public Service Corporation**  
 700 North Adams Street  
 P.O. Box 19001  
 Green Bay, WI 54307-9001  
 www.wisconsinpublicservice.com

December 18, 2018

Ms. Kimberly D. Bose, Secretary  
 Federal Energy Regulatory Commission  
 888 First Street NE  
 Washington DC 20425

Dear Ms. Bose:

**SUBJECT: Purple Loosestrife Monitoring Plan - Purple Loosestrife Monitoring Report**

<u>Hydro</u>	<u>FERC Project No.</u>	<u>NATDAM No.</u>	<u>License Article</u>
Jersey	2476	WI00745	407

In accordance with the Federal Energy Regulatory Commission (FERC) Order Amending the Purple Loosestrife Monitoring Plan for the Jersey Hydroelectric Project issued March 15, 2016, Wisconsin Public Service (WPS) is required to provide monitoring reports of the purple loosestrife (PL) surveys to FERC by December 31 each year a survey has been completed.

2018 Purple Loosestrife Survey Results

A survey for PL was completed on July 17, 2018. Twelve colonies of PL were identified at the Project. Of the twelve colonies, seven were small colonies and were completely hand pulled and disposed of offsite. Appendix A includes the 2018 PL survey results.

WPS also assisted in raising approximately 26,000 *Galerucella species* beetles (beetles) which were released by the Friends of Jersey Lake Group on July 1, 2018. The beetles were released in fourteen different locations to supplement the existing beetle populations. WPS observed beetle feeding on eleven of the twelve identified colonies.

A review of the monitoring data suggests the introduction of beetles as a biocontrol measure at the Project has been effective. A comparison of data from the 2014 PL survey to the 2018 PL survey indicates a decrease in the number of plants and overall size of the PL colonies has been observed. When comparing the PL population in 2018 to the population observed in 2009, the first year of control, a significant decrease in the PL populations is evident. Appendix B includes a PL population comparison table (2009-2014, 2018).

WPS will continue monitoring for PL every three years as outlined in the Order Amending the Purple Loosestrife Monitoring Plan. The next PL survey is schedule for 2021.

A copy of this report was submitted to the Wisconsin Department of Natural Resources (WDNR) and the US Fish and Wildlife Service (FWS) on October 31, 2018. The WDNR and FWS did not provide any comments. Appendix C includes the 2018 documentation of consultation.

Ms. Kimberly D. Bose  
December 18, 2018  
Page 2 of 2

Should you have any questions relative to this material, please do not hesitate to contact Jes Roloff at (920) 433-5558 or [Jessica.Roloff@WECEnergyGroup.com](mailto:Jessica.Roloff@WECEnergyGroup.com)

Sincerely,



Todd P. Jastremski  
Asset Manager Hydro Operations  
We Energies  
800 Industrial Park Drive  
Iron Mountain, MI 49801

JRR/cll

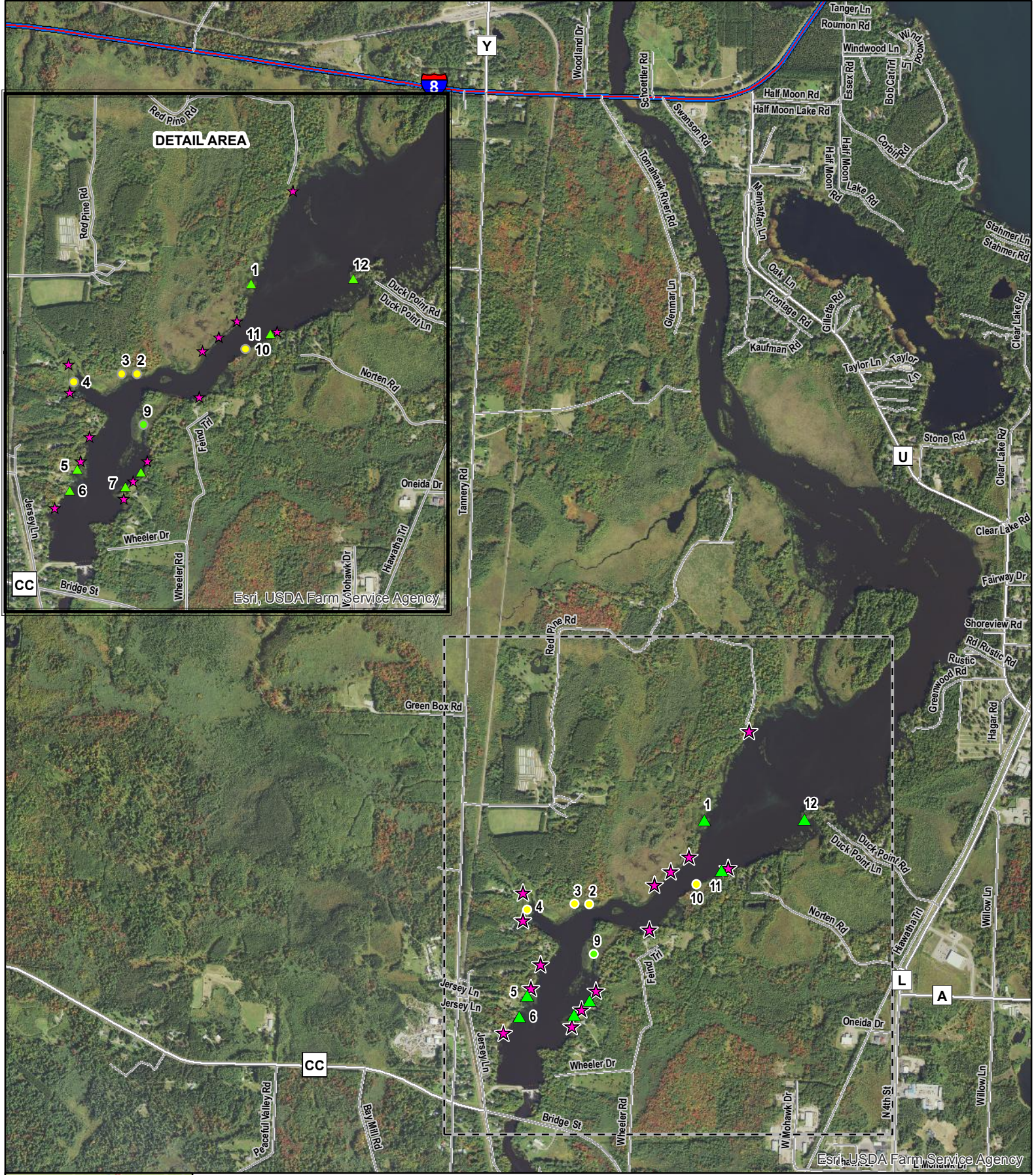
Enc: Appendix A – 2018 Purple Loosestrife Results – 3 Pages  
Appendix B – Purple Loosestrife Population Comparison Table (2009 – 2014, 2018) – 2 Pages  
Appendix C – 2018 Documentation of Consultation – 9 Pages

cc: Ms. Cheryl Laatsch, WDNR  
Mr. Nicholas Utrup, USFWS  
Mr. John Zygaj, FERC - CRO

**APPENDIX A**

**2018 PURPLE LOOSESTRIFE SURVEY RESULTS**





## Jersey Hydroelectric Project Purple Loosestrife Survey-2018

- |  |                              |
|--|------------------------------|
| ★ Beetle Release Site by the Friends of Jersey | ● Medium                     |
| ● Purple Loosestrife Severity                  | ▲ Medium; Pulled all Plants  |
| ● Low  | ● High                       |
| ▲ Low; Pulled all Plants                       | ▲ High; Pulled all Plants    |
|  | ▲ No longer able to identify |



**APPENDIX B**

**PURPLE LOOSESTRIFE POPULATION COMPARISON TABLE  
(2009-2014, 2018)**

**Jersey Hydroelectric Project 2009 - 2014, 2018 Summary**

Year	Total Number of Colonies	Number of Small Colonies (0-5 Plants)	Number of Medium Colonies (6 - 50 Plants)	Number of Large Colonies (51+ plants)	Number of Colonies With Beetle Feeding	Percentage of Total Colonies With Beetle Feeding	Beetles Released
2009	28	14	9	5	20	71%	1,000
2010	35	18	10	5	28	80%	2,000
2011	16	7	8	1	15	94%	2,000
2012	21	12	7	2	19	90%	2,000
2013	8	2	5	1	8	100%	3,000
2014	12	4	7	1	10	83%	3,000
2018	12	8	4	0	11	92%	26,000

7 Year Average	18.86	9.29	7.14	2.14	15.86	87.24%	
----------------	-------	------	------	------	-------	--------	--

**APPENDIX C**

**2018 DOCUMENTATION OF CONSULTATION**





**Wisconsin Public Service Corporation**  
 700 North Adams Street  
 P.O. Box 19001  
 Green Bay, WI 54307-9001  
[www.wisconsinpublicservice.com](http://www.wisconsinpublicservice.com)

October 31, 2018

Ms. Cheryl Laatsch  
 Wisconsin Department of Natural Resources  
 PO Box 7921  
 Madison, WI 53707-7921

Dear Ms. Laatsch:

**SUBJECT: Purple Loosestrife Monitoring Plan - Purple Loosestrife Monitoring Report**

<u>Hydro</u>	<u>FERC Project No.</u>	<u>NATDAM No.</u>	<u>License Article</u>
Jersey	2476	WI00745	407

In accordance with the Federal Energy Regulatory Commission (FERC) Order Amending the Purple Loosestrife Monitoring Plan for the Jersey Hydroelectric Project issued March 15, 2016, Wisconsin Public Service Corporation (WPS) is to provide monitoring reports of the purple loosestrife (PL) surveys to the Wisconsin Department of Natural Resources (WDNR) and U.S. Fish & Wildlife Service (FWS) by October 31, each year a survey has been completed.

2018 Purple Loosestrife Survey Results

A survey for PL was completed on July 17, 2018. Twelve colonies of PL were identified at the Project. Of the twelve colonies, seven were small colonies and were completely hand pulled and disposed of offsite. Appendix A includes the 2018 PL survey results.

WPS also assisted in raising approximately 26,000 *Galerucella species* beetles which were released by the Friends of Jersey Lake Group on July 1, 2018 in fourteen different locations to supplement the existing beetle populations. WPS observed beetle feeding on eleven of the twelve identified colonies.

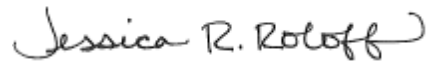
A review of the monitoring data shows that the introduction of beetles as a biocontrol measure at the Project has been effective. When comparing data from the 2014 PL survey to the 2018 PL survey; a decrease in the number of plants and overall size of PL is observed. When comparing PL population in 2018 to population observed in 2009; first year of control, a significant decrease in PL populations is clearly demonstrated. Appendix B includes a PL population comparison table (2009-2014, 2018).

WPS will continue monitoring for PL every three years as outlined in the Order Amending the Purple Loosestrife Monitoring Plan for the Jersey Hydroelectric Project. The next PL survey is schedule for 2021.

Please provide any comments you may have regarding this report within 30 days. Should you have any questions relative to this material, please do not hesitate to contact me at (920) 433-5558 or [Jessica.Roloff@WECEnergyGroup.com](mailto:Jessica.Roloff@WECEnergyGroup.com)

Ms. Cheryl Laatsch  
October 31, 2018  
Page 2 of 2

Sincerely,

A handwritten signature in black ink that reads "Jessica R. Roloff". The signature is written in a cursive style with a large, sweeping flourish at the end.

Jes Roloff  
Environmental Consultant  
Wisconsin Public Service  
700 North Adams Street  
Green Bay, WI 54301

Enc: Appendix A – 2018 Purple Loosestrife Survey Results  
Appendix B – Purple Loosestrife Population Comparison Table (2009 – 2014, 2018)

**IN THE INTEREST OF PAPERWORK REDUCTION, REDUNDANT MATERIALS ARE NOT INCLUDED**

**NO COMMENTS RECEIVED BY THE WISCONSIN DEPARTMENT OF NATURAL RESOURCES**



**Wisconsin Public Service Corporation**  
 700 North Adams Street  
 P.O. Box 19001  
 Green Bay, WI 54307-9001  
[www.wisconsinpublicservice.com](http://www.wisconsinpublicservice.com)

October 31, 2018

Mr. Nicholas Utrup  
 U.S. Fish & Wildlife Service  
 Department of the Interior  
 4101 American BLVD E  
 Bloomington, MN 55425

Dear Mr. Utrup:

**SUBJECT: Purple Loosetrife Monitoring Plan - Purple Loosetrife Monitoring Report**

<u>Hydro</u>	<u>FERC Project No.</u>	<u>NATDAM No.</u>	<u>License Article</u>
Jersey	2476	WI00745	407

In accordance with the Federal Energy Regulatory Commission (FERC) Order Amending the Purple Loosetrife Monitoring Plan for the Jersey Hydroelectric Project issued March 15, 2016, Wisconsin Public Service Corporation (WPS) is to provide monitoring reports of the purple loosetrife (PL) surveys to the Wisconsin Department of Natural Resources (WDNR) and U.S. Fish & Wildlife Service (FWS) by October 31, each year a survey has been completed.

2018 Purple Loosetrife Survey Results

A survey for PL was completed on July 17, 2018. Twelve colonies of PL were identified at the Project. Of the twelve colonies, seven were small colonies and were completely hand pulled and disposed of offsite. Appendix A includes the 2018 PL survey results.

WPS also assisted in raising approximately 26,000 *Galerucella species* beetles which were released by the Friends of Jersey Lake Group on July 1, 2018 in fourteen different locations to supplement the existing beetle populations. WPS observed beetle feeding on eleven of the twelve identified colonies.

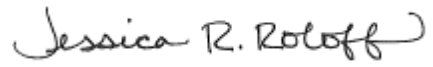
A review of the monitoring data shows that the introduction of beetles as a biocontrol measure at the Project has been effective. When comparing data from the 2014 PL survey to the 2018 PL survey; a decrease in the number of plants and overall size of PL is observed. When comparing PL population in 2018 to population observed in 2009; first year of control, a significant decrease in PL populations is clearly demonstrated. Appendix B includes a PL population comparison table (2009-2014, 2018).

WPS will continue monitoring for PL every three years as outlined in the Order Amending the Purple Loosetrife Monitoring Plan for the Jersey Hydroelectric Project. The next PL survey is schedule for 2021.

Please provide any comments you may have regarding this report within 30 days. Should you have any questions relative to this material, please do not hesitate to contact me at (920) 433-5558 or [Jessica.Roloff@WECEnergyGroup.com](mailto:Jessica.Roloff@WECEnergyGroup.com)

Mr. Nicholas Utrup  
October 31, 2018 Page  
2 of 2

Sincerely,

A handwritten signature in black ink that reads "Jessica R. Roloff". The signature is written in a cursive style with a large, sweeping initial 'J'.

Jes Roloff  
Environmental Consultant  
Wisconsin Public Service  
700 North Adams Street  
Green Bay, WI 54301

Enc: Appendix A – 2018 Purple Loosestrife Survey Results  
Appendix B – Purple Loosestrife Population Comparison Table (2009 – 2014, 2018)

**IN THE INTEREST OF PAPERWORK REDUCTION, REDUNDANT MATERIALS ARE NOT INCLUDED**

**NO COMMENTS RECEIVED BY THE US FISH AND WILDLIFE SERVICE**