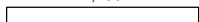


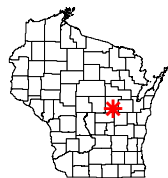
1,250



Feet

Onterra LLC
 Lake Management Planning
 815 Prosper Road
 De Pere, WI 54115
 920.338.8860
 www.onterra-eco.com

Sources:
 Roads & Hydro: WDNR
 Map Date: October 28, 2011
 Filename: Map1_White_Location.mxd



Project Location in Wisconsin

Legend



White Lake ~1,026 acres
 WDNR Definition



Point-Intercept Survey Location
 82-meter spacing, 640 total points



Public Boat Landing



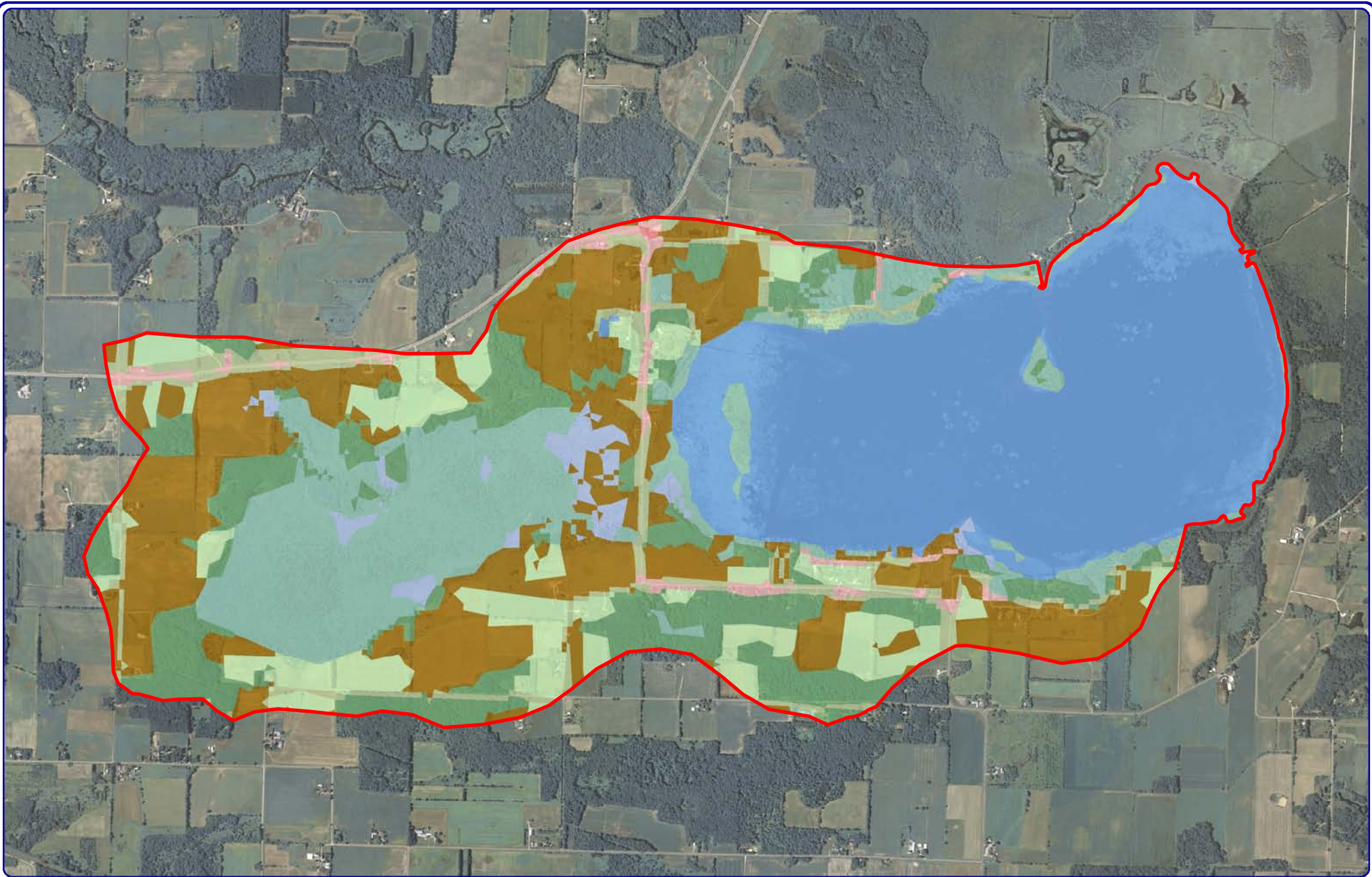
Water Quality Sampling Location

Map 1

White Lake

Waupaca County, Wisconsin

**Project Location
 & Lake Boundaries**



2,000



Feet



Project Location in Wisconsin

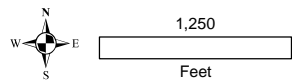
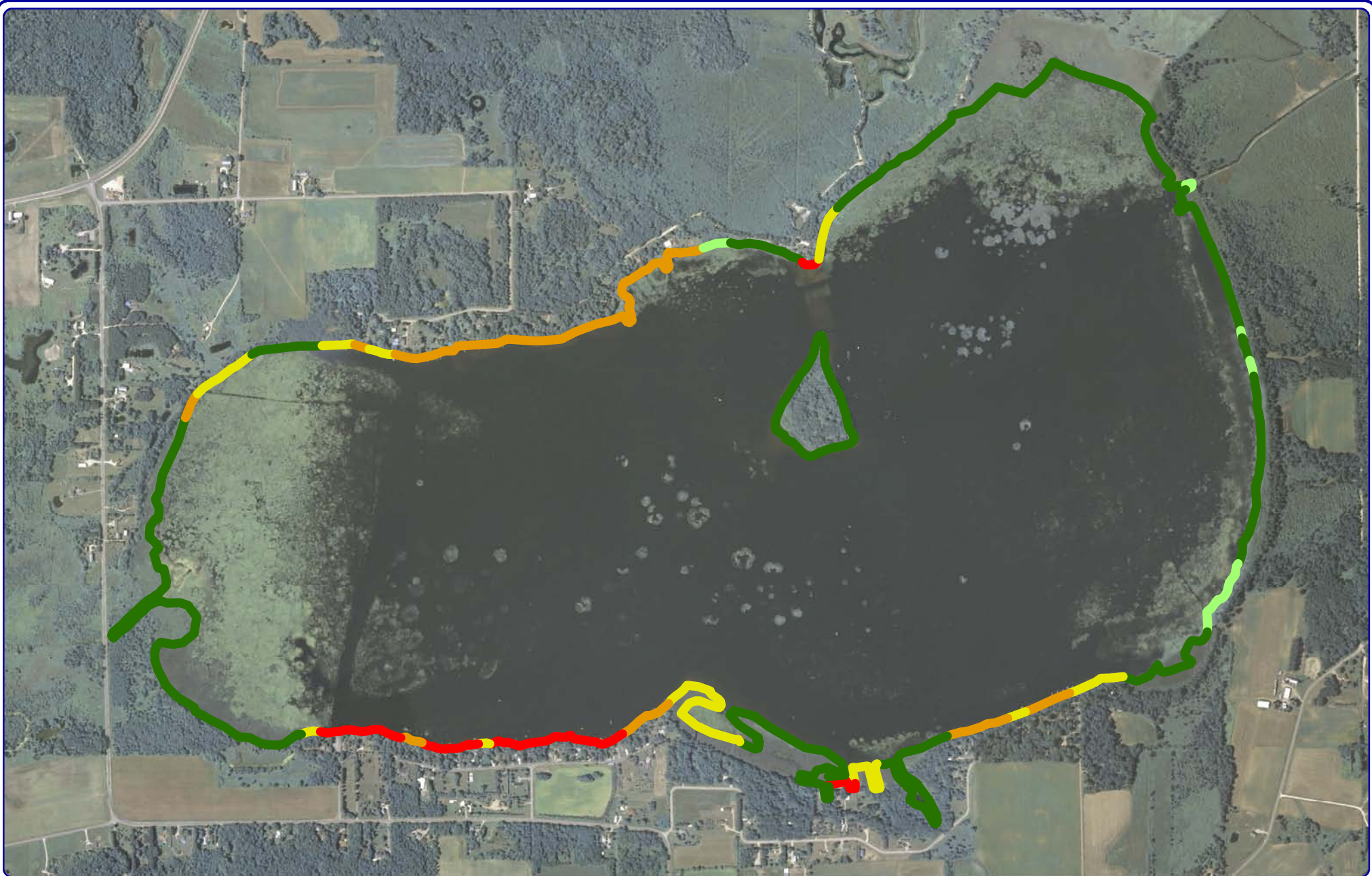
Onterra LLC
 Lake Management Planning
 815 Prosper Rd.
 De Pere, WI 54115
 920.338.8860
 www.onterra-eco.com

Sources:
 Hydro: WDNR
 Orthophotography: NAIP, 2010
 Watershed: WDNR & Onterra
 Land Cover: NLCD 2006
Map Date: October 28, 2011
 Filename: Map2_White_Watershed.mxd

Legend

- | | | |
|-------------------|-------------------|----------------------|
| Forest | Rural Open Space | Wetland |
| Forested Wetlands | Rural Residential | Row Crop Agriculture |
| Pasture/Grass | Open Water | Watershed Boundary |

Map 2
White Lake
 Waupaca County, Wisconsin
Watershed and
Land Cover Types



Onterra LLC
 Lake Management Planning
 815 Prosper Rd.
 De Pere, WI 54115
 920.338.8860
 www.onterra-eco.com

Sources:
 Orthophotography: NAIP, 2010
 Shoreline Assessment: Onterra, 2010
 Map Date: October 17, 2011
 File Name: Map2_White_SA_2010.mxd

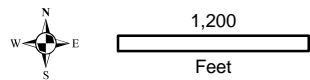
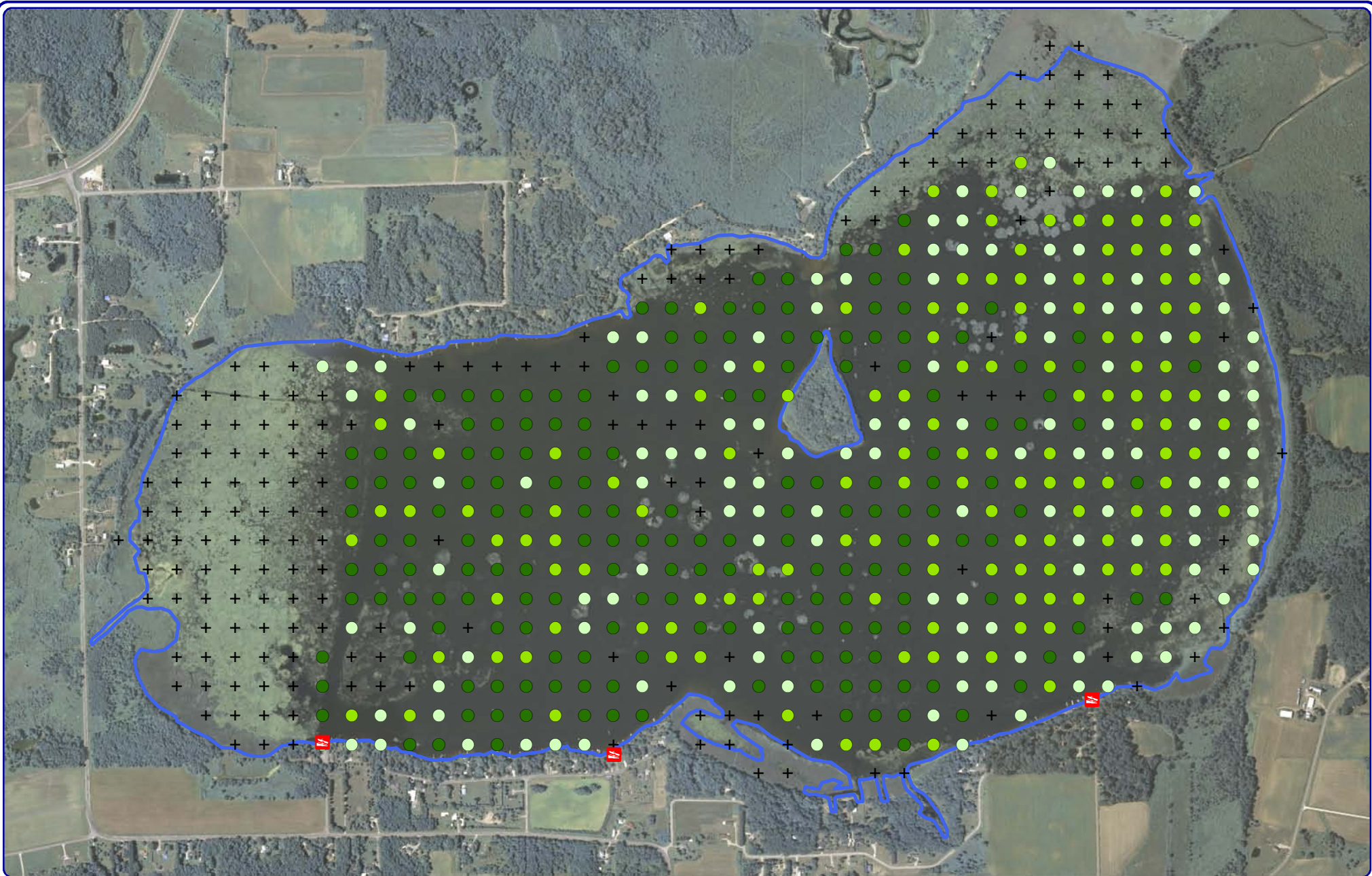


Project Location in Wisconsin

Legend

- Natural/Undeveloped
- Developed-Natural
- Developed-Semi-Natural
- Developed-Unnatural
- Urbanized

Map 3
White Lake
 Waupaca County, Wisconsin
2010 Shoreline
Condition



Onterra LLC
 Lake Management Planning
 815 Prosper Rd.
 De Pere, WI 54115
 920.338.8860
 www.onterra-eco.com

Sources:
 Hydro: WDNR
 Orthophotography: NAIP, 2010
 Aquatic Plant Survey: Onterra, 2010
 Map Date: October 28, 2011
 Filename: Map4_White_VegLocations.mxd



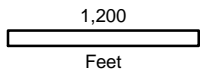
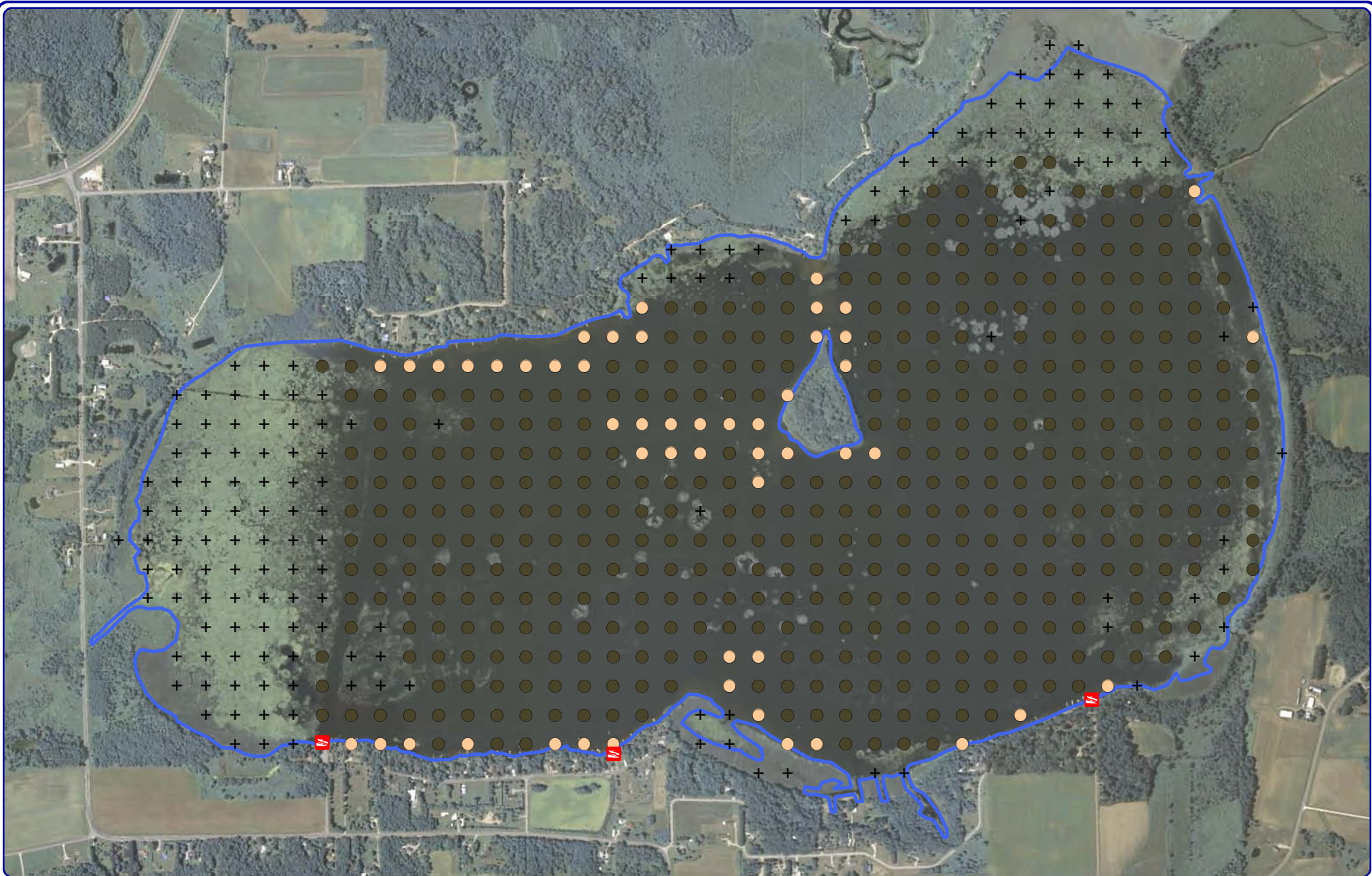
Project Location in Wisconsin

Legend

Point-intercept Sampling Locations

- + No Vegetation or Non-navigable
- Rake-fullness = 1
- Rake-fullness = 2
- Rake-fullness = 3

Map 4
 White Lake
 Waupaca County, Wisconsin
**Aquatic Plant
 Distribution**



Onterra LLC
 Lake Management Planning
 815 Prosper Rd.
 De Pere, WI 54115
 920.338.8860
 www.onterra-eco.com

Sources:
 Hydro: WDNR
 Orthophotography: NAIP, 2010
 Aquatic Plant Survey: Onterra, 2010
 Map Date: October 28, 2011
 Filename: Map5_White_Sediment.mxd



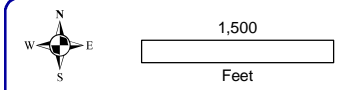
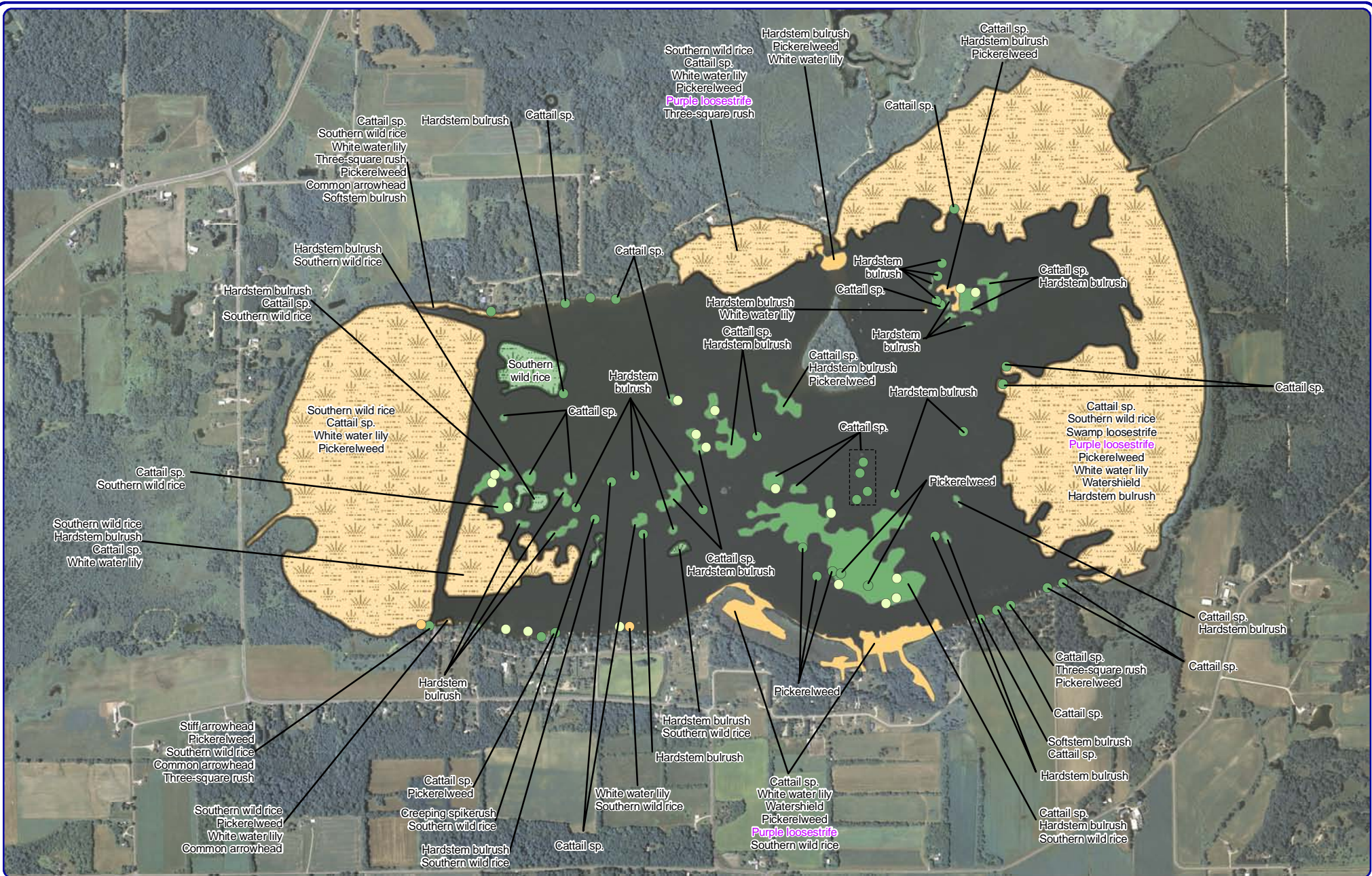
Project Location in Wisconsin

Legend

Point-intercept Sampling Locations

- + No Data (Non-navigable)
- Muck
- Sand
- Rock (None)

Map 5
 White Lake
 Waupaca County, Wisconsin
Substrate Types



Onterra LLC
 Lake Management Planning
 815 Prosper Rd.
 De Pere, WI 54115
 920.338.8860
 www.onterra-eco.com

Sources:
 Orthophotography: NAIP, 2010
 Aquatic Plants: Onterra, 2010
 Map Date: March 14, 2011
 File Name: Map6_White_Comm_2010.mxd



Project Location in Wisconsin

Small Plant Communities

- Emergent
- Floating-leaf
(White water lily unless otherwise noted)
- Mixed Floating-leaf & Emergent

Exotic Plant Communities

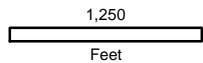
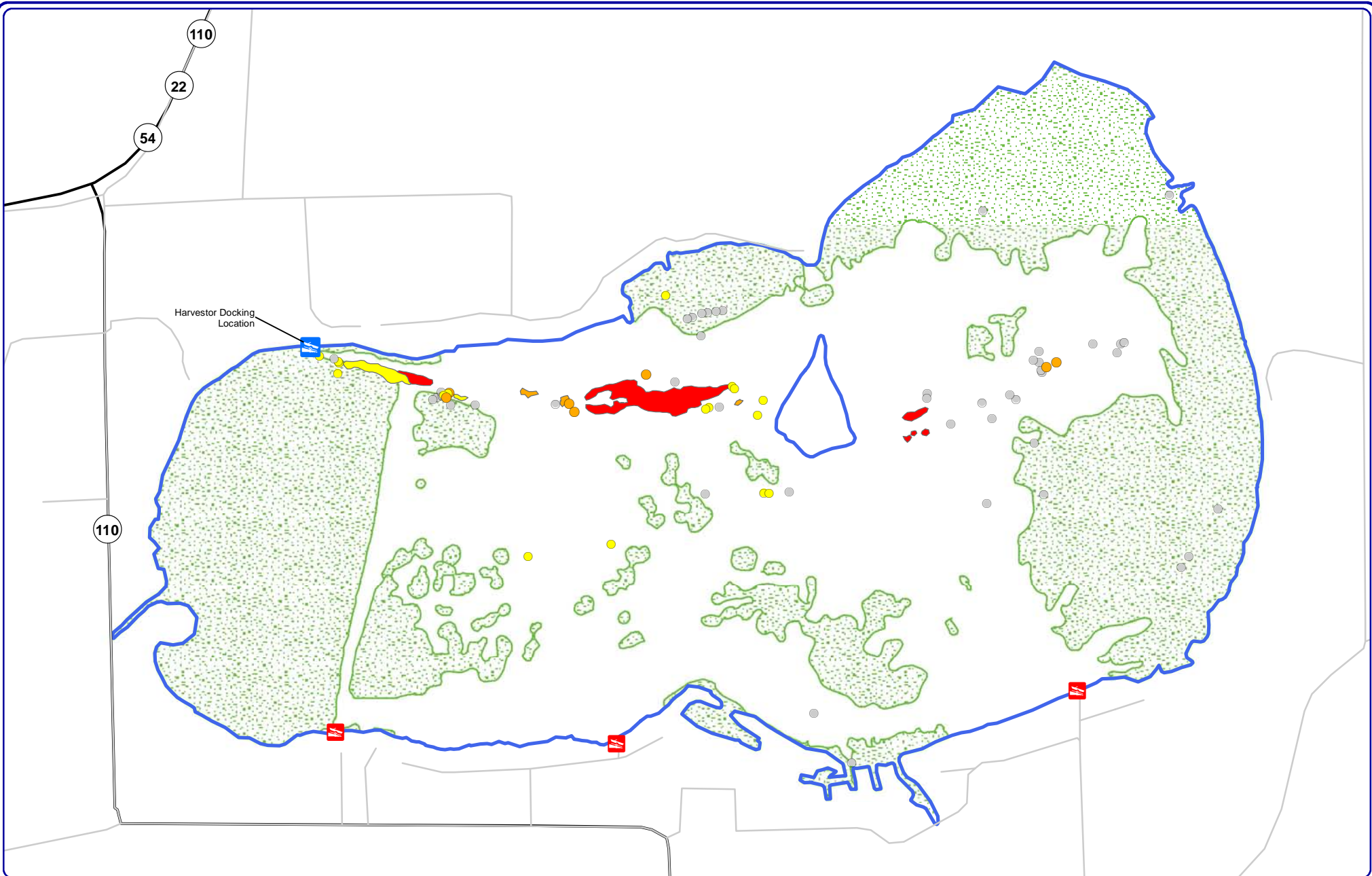
- ◆ Purple Loosestrife (Note: Eurasian water milfoil and curly-leaf pondweed shown on a separate map)

Large Plant Communities

- Emergent
- Mixed Floating-leaf & Emergent
- Wild Rice Dominated Community
(Rice observed as 1st or 2nd most common species in community)

Map 6
White Lake
 Waupaca County, Wisconsin

Aquatic Plant Communities



Onterra LLC
 Lake Management Planning
 815 Prosper Rd.
 De Pere, WI 54115
 920.338.8860
 www.onterra-eco.com

Sources:

Roads & Hydro: WDNR
 Plant Survey: Onterra, 2010

Map date: October 20, 2010

Filename: Map7_White_CLP_PB_June10.mxd



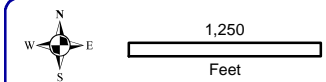
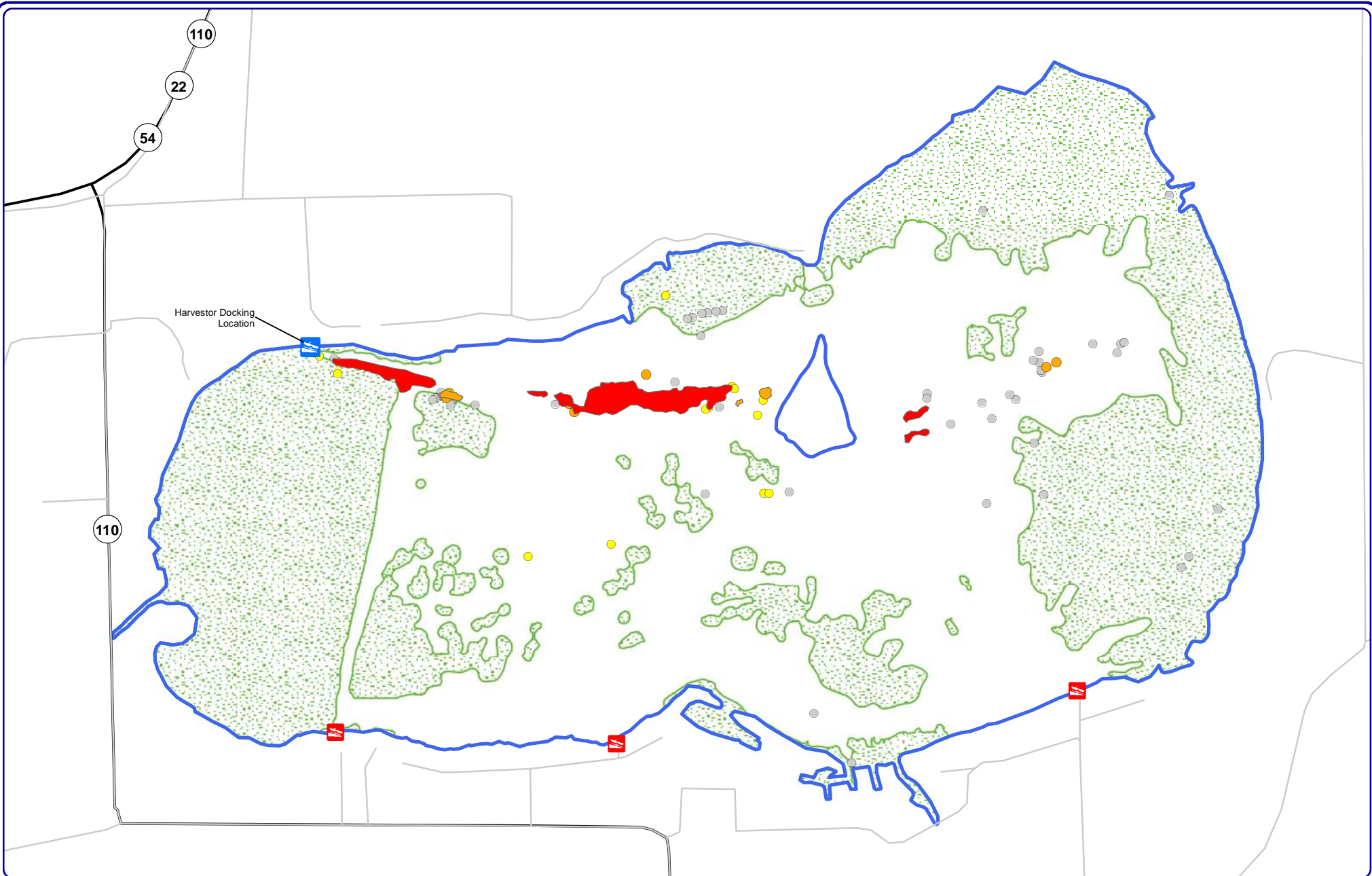
Project Location in Wisconsin

Legend

Curly-leaf Pondweed June 2010

- | | | |
|------------------------|-------------------|------------------------------|
| ● Single or Few Plants | ■ Dominant | ■ Boat Landing |
| ● Clumps of Plants | ■ Highly Dominant | ■ Emergent Plant Community |
| ● Small Plant Colony | ■ Surface Matting | ■ Harvester Docking Location |

Map 7
 White Lake
 Waupaca County, Wisconsin
2010 CLP
Survey Results



Onterra LLC
 Lake Management Planning
 815 Prosper Rd.
 De Pere, WI 54115
 920.338.8860
 www.onterra-eco.com

Sources:
 Roads & Hydro: WDNR
 Plant Survey: Onterra, 2011
Map Date: October 17, 2011
 Filename: Map8_White_CLP_PB_June 10.mxd



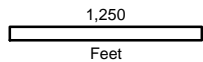
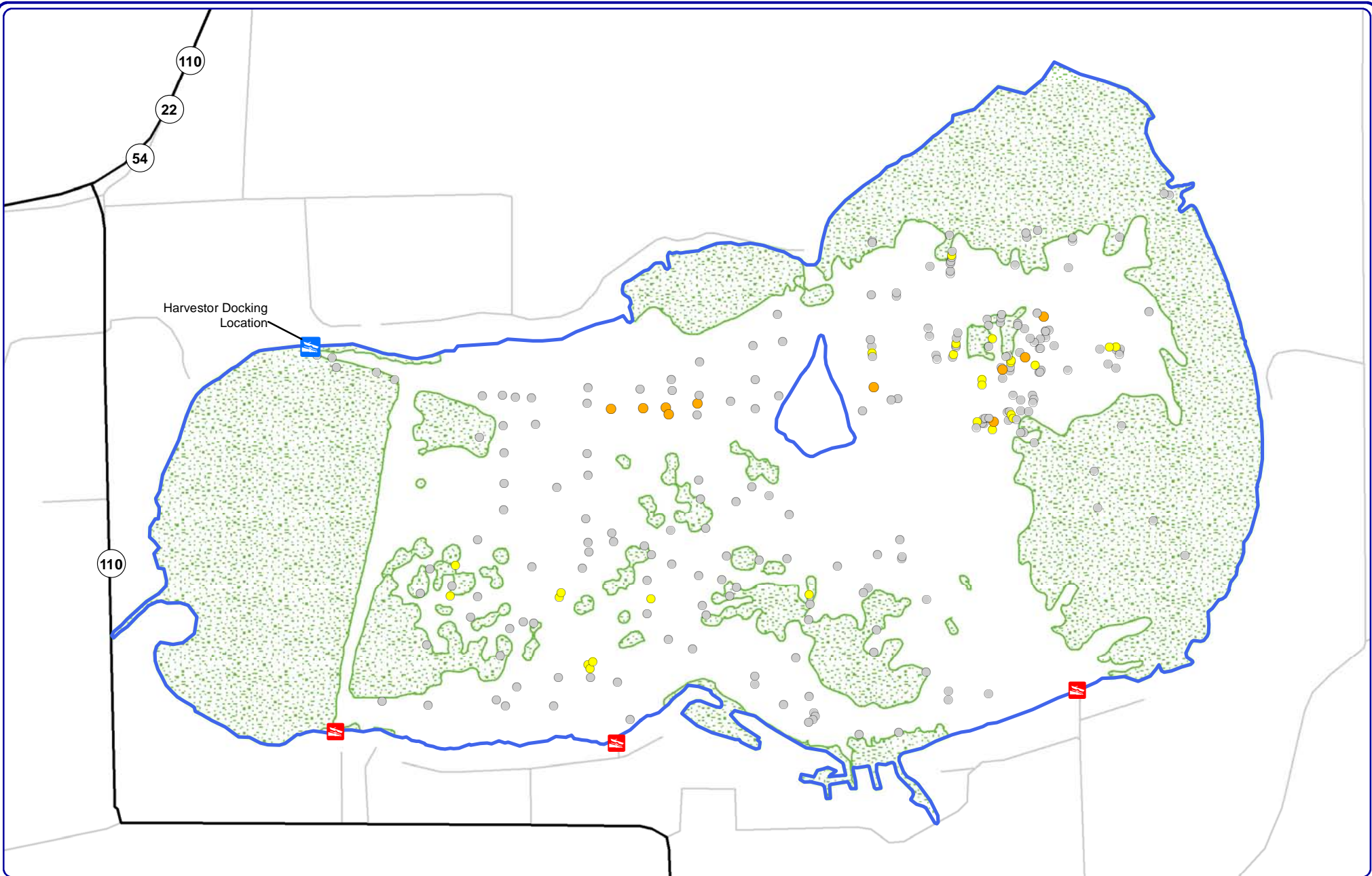
Project Location in Wisconsin

Legend

Curly-leaf Pondweed June 2011

- | | | |
|------------------------|-------------------|------------------------------|
| ● Single or Few Plants | ■ Dominant | ■ Boat Landing |
| ● Clumps of Plants | ■ Highly Dominant | ■ Emergent Plant Community |
| ● Small Plant Colony | ■ Surface Matting | ■ Harvester Docking Location |

Map 8
White Lake
 Waupaca County, Wisconsin
2011 CLP
Survey Results



Onterra LLC
 Lake Management Planning
 815 Prosper Rd.
 De Pere, WI 54115
 920.338.8860
 www.onterra-eco.com

Sources:

Roads & Hydro: WDNR
 Plant Survey: Onterra, 2010

Map Date: October 20, 2011

Filename: Map10_White_EWM_PB_Aug10.mxd

Project Location in Wisconsin

Legend

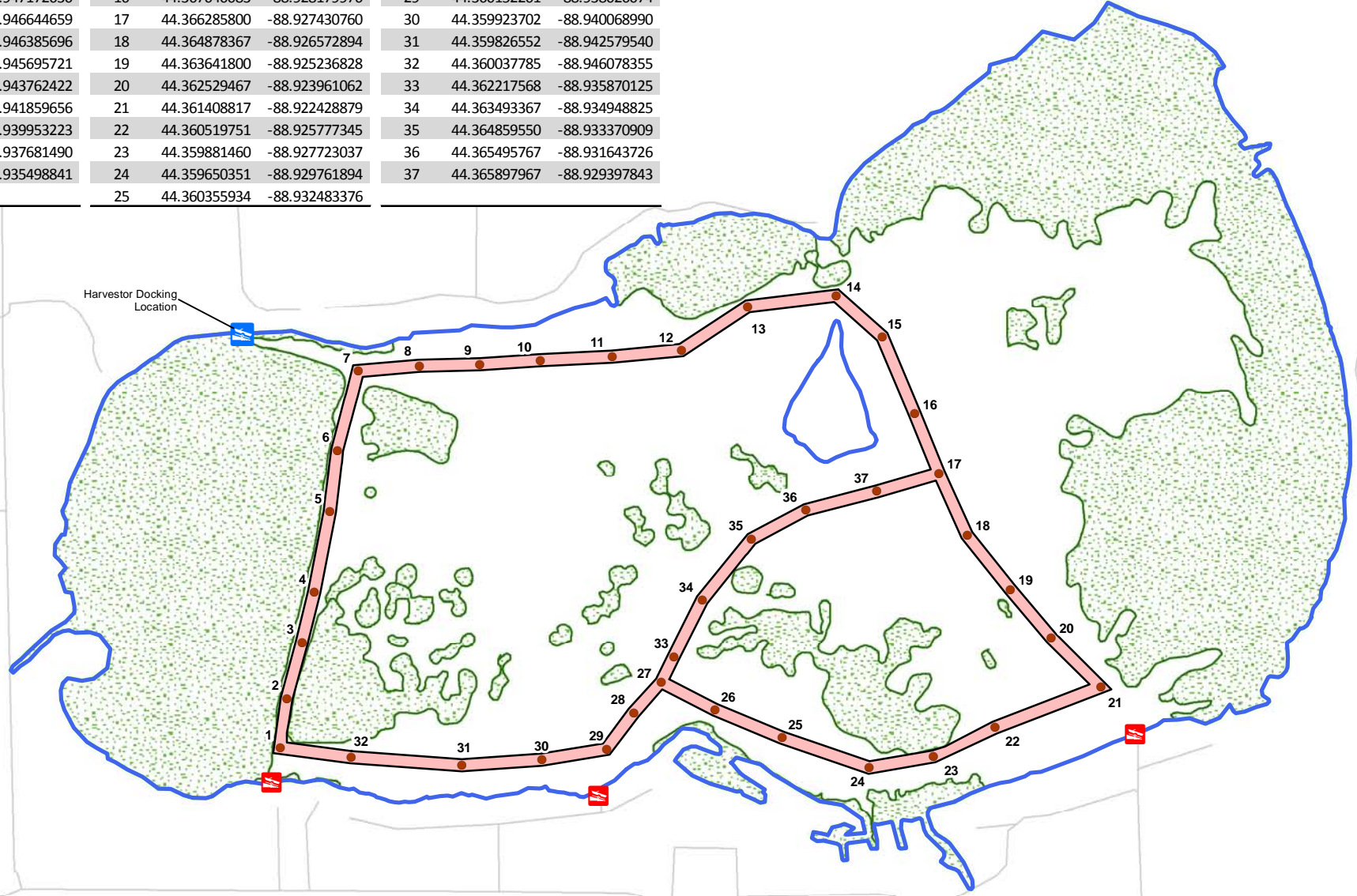
Eurasian water milfoil August 2010

- Single or Few Plants
- Clumps of Plants
- Small Plant Colony

- Boat Landing
- Harvester Docking Location
- Emergent Plant Community

Map 9
 White Lake
 Waupaca County, Wisconsin
**2010 EWM
 Survey Results**

Bouy #	Latitude	Longitude	Bouy #	Latitude	Longitude	Bouy #	Latitude	Longitude
1	44.360273736	-88.948305757	13	44.370117119	-88.933390989	26	44.361004568	-88.934588942
2	44.361384147	-88.948079183	14	44.370334140	-88.930602963	27	44.361648401	-88.936277241
3	44.362644900	-88.947576990	15	44.369391299	-88.929156909	28	44.360962301	-88.937148525
4	44.363781948	-88.947172630	16	44.367640083	-88.928179976	29	44.360152201	-88.938026074
5	44.365600382	-88.946644659	17	44.366285800	-88.927430760	30	44.359923702	-88.940068990
6	44.366988426	-88.946385696	18	44.364878367	-88.926572894	31	44.359826552	-88.942579540
7	44.368769001	-88.945695721	19	44.363641800	-88.925236828	32	44.360037785	-88.946078355
8	44.368871834	-88.943762422	20	44.362529467	-88.923961062	33	44.362217568	-88.935870125
9	44.368885634	-88.941859656	21	44.361408817	-88.922428879	34	44.363493367	-88.934948825
10	44.368962783	-88.939953223	22	44.360519751	-88.925777345	35	44.364859550	-88.933370909
11	44.369022317	-88.937681490	23	44.359881460	-88.927723037	36	44.365495767	-88.931643726
12	44.369149617	-88.935498841	24	44.359650351	-88.929761894	37	44.365897967	-88.929397843
			25	44.360355934	-88.932483376			





 1,250

 Feet



Onterra LLC

 Lake Management Planning

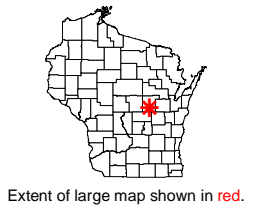
 815 Prosper Road

 De Pere, WI 54115





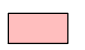
 920.338.8860

 www.onterra-eco.com

Sources:
 Roads & Hydro: WDNR
 Plant Survey: Onterra, 2011
Map Date: October 24, 2012
 File Name: Map10_White_HarvestLanes_2012.mxd



Legend

-  Boat Landing
-  Harvester Off-loading Location
-  Emergent Plant Community
-  Navigation Bouy
-  Harvesting Lane
(100 ft max width, approximately 50 acres)

Map 10
 White Lake
 Waupaca County, Wisconsin
**Harvesting
 Lanes**