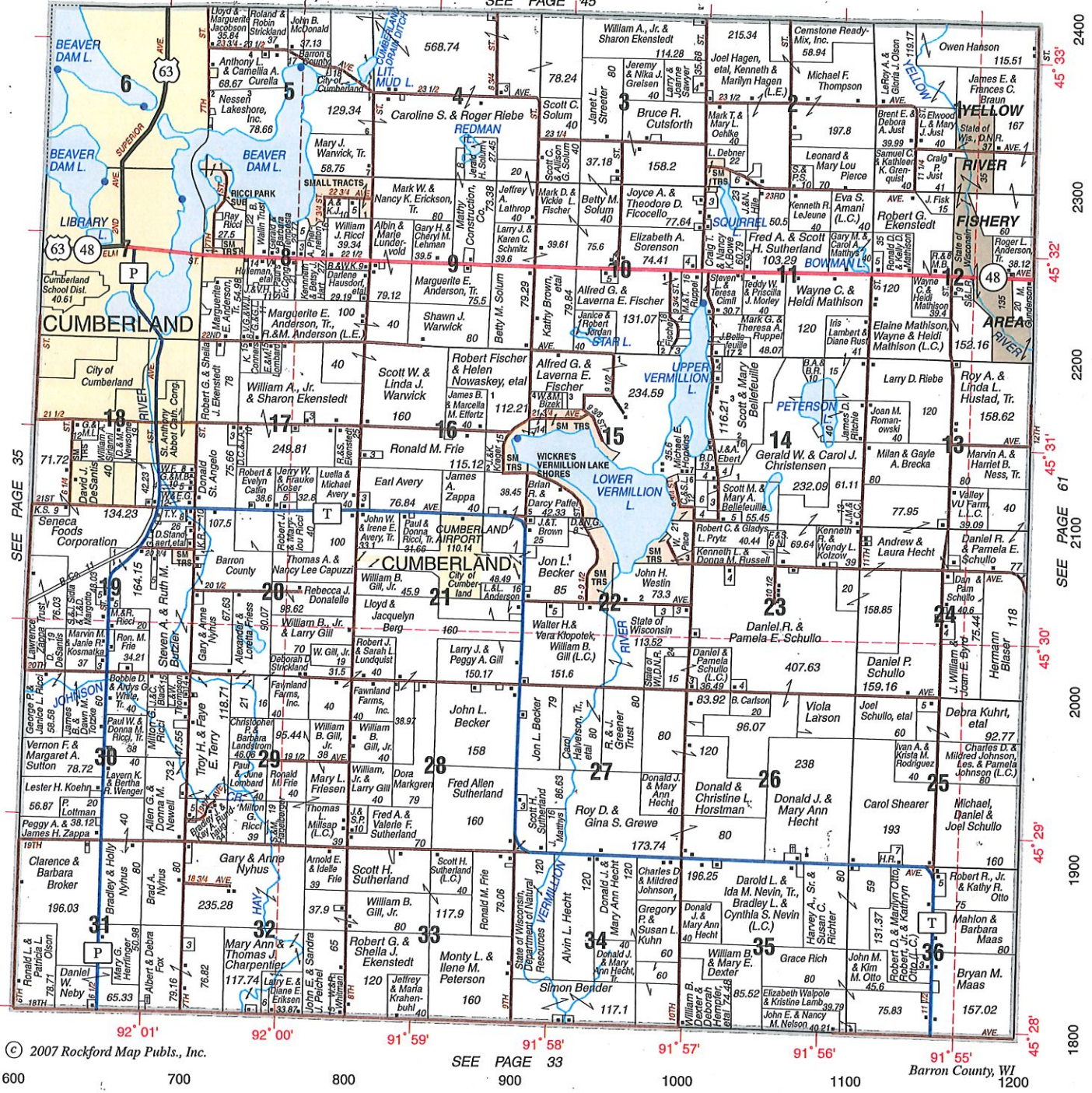


T.35N.-R.13W.

CUMBERLAND

SEE PAGE 45



© 2007 Rockford Map Pubs., Inc.

SEE PAGE 33

600 700 800 900 1000 1100 1200 Barron County, WI

PUBLISHED IN WISCONSIN'S ISLAND CITY

Cumberland Advocate

(715) 822-4469 - Cumberland, Wisconsin 54829

Serving The Cumberland Area Over 126 Years
 10,000 Homes Are Served With The Advocate/Beacon Shopper
 Published Every Wednesday



126th Year

Knudson Agency, Inc.

Complete Insurance Service

Farm • Home • Business

Auto • Life • Health

Phone: 234-9138

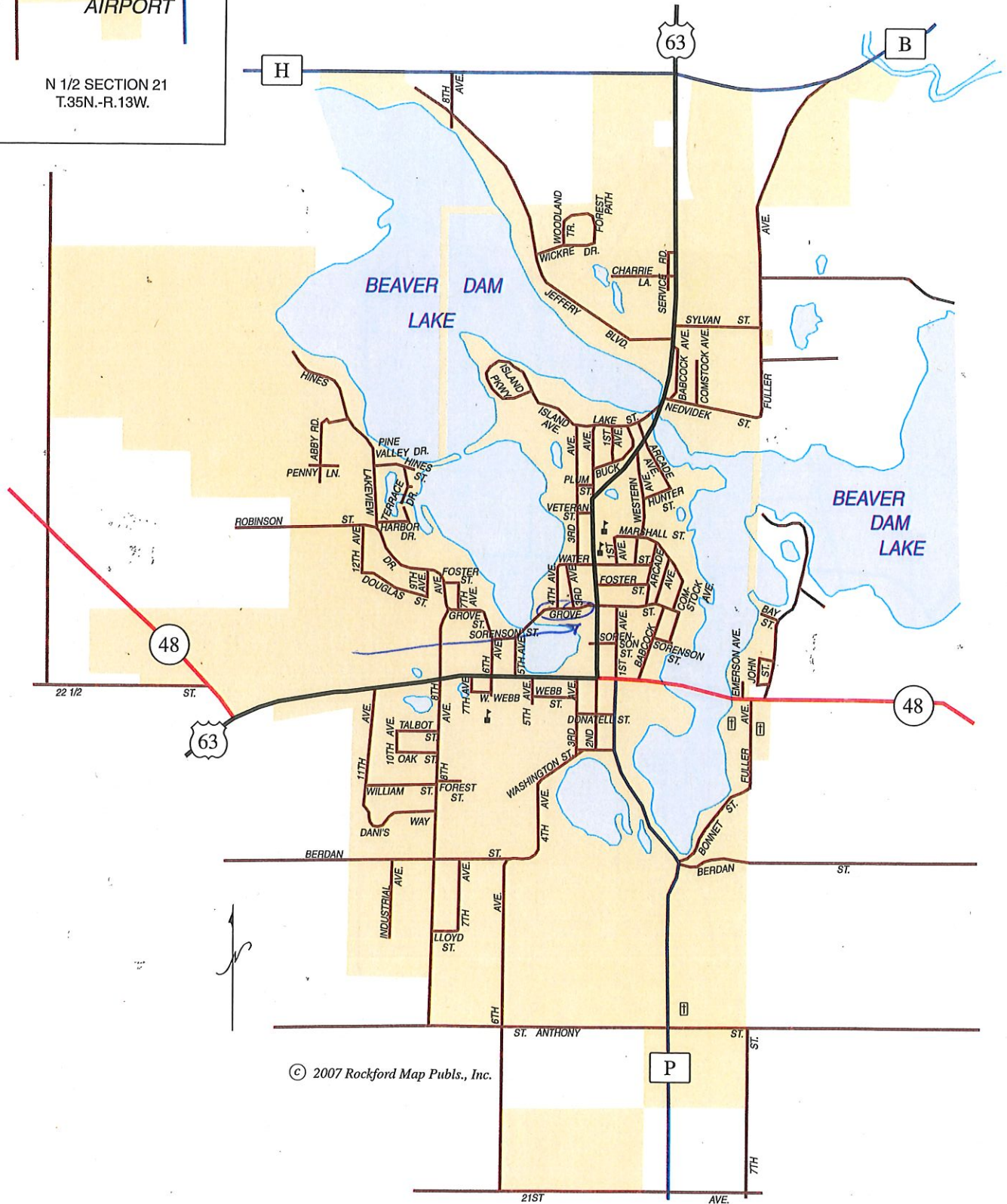
803 South Main Street • Rice Lake, Wisconsin

CITY & VILLAGE MAPS OF BARRON COUNTY

City of CUMBERLAND

T
CUMBERLAND
AIRPORT

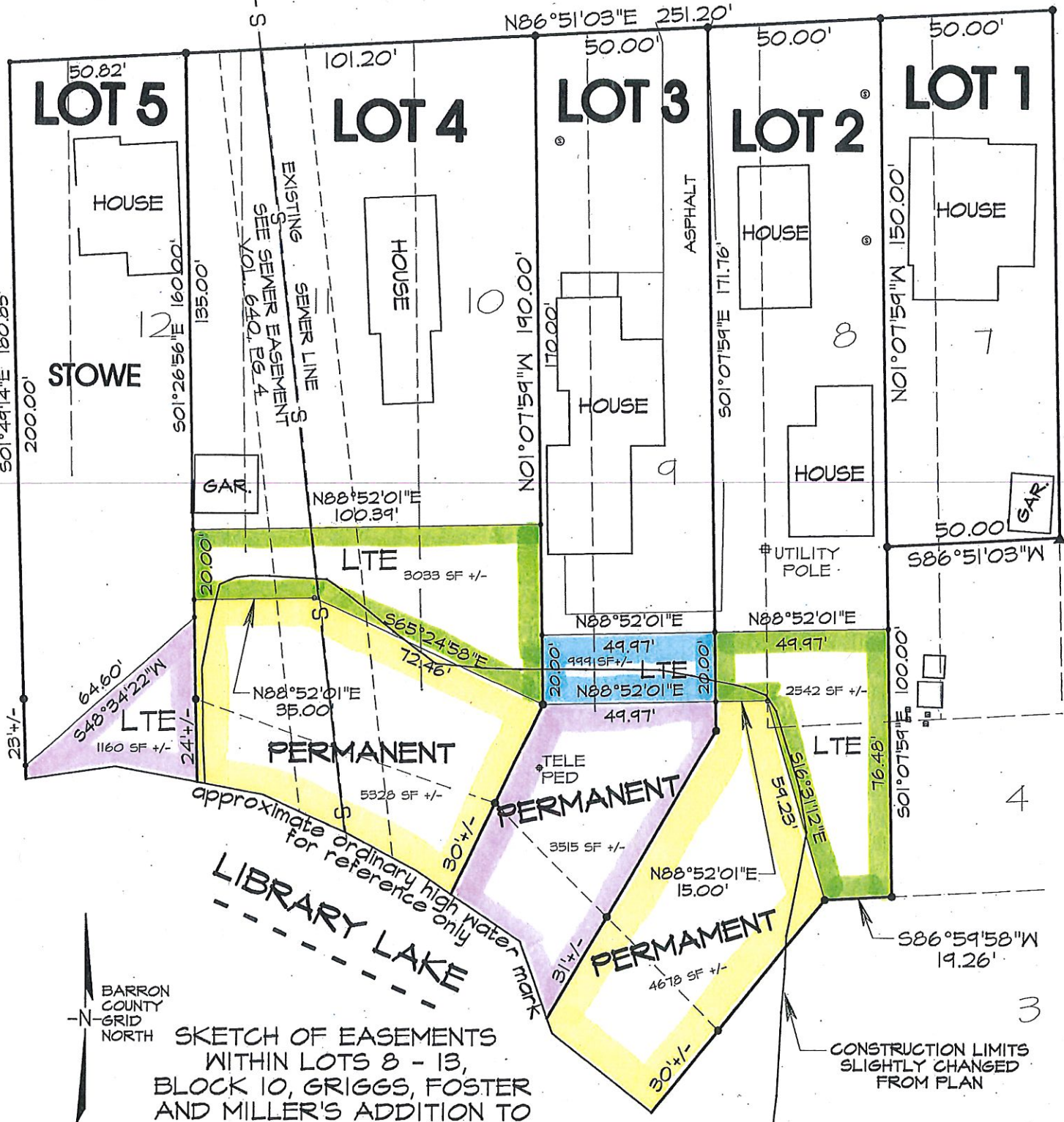
N 1/2 SECTION 21
T.35N.-R.13W.



© 2007 Rockford Map Pubs., Inc.

MANHOLE CENTERLINE GROVE STREET

PLATTED AS 60' WIDE



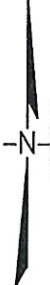
SKETCH OF EASEMENTS WITHIN LOTS 8 - 13, BLOCK 10, GRIGGS, FOSTER AND MILLER'S ADDITION TO CUMBERLAND, WISCONSIN

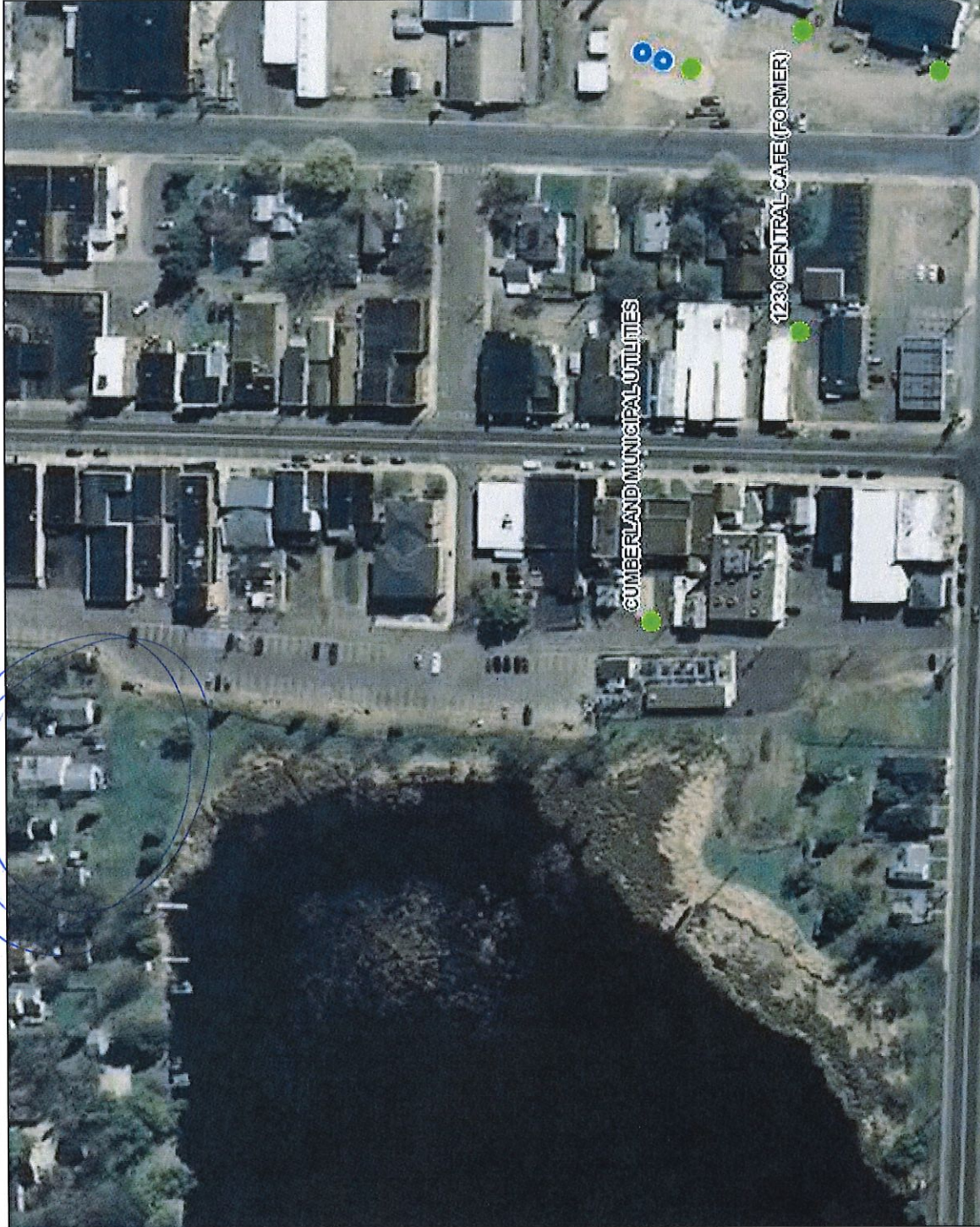
CONSTRUCTION LIMITS SLIGHTLY CHANGED FROM PLAN

GRAPHIC SCALE 1" = 40'



BARRON COUNTY GRID NORTH





Legend

- Open Site (ongoing cleanup)
- Closed Site (completed cleanup)
- Cities
- Villages

Notes

DISCLAIMER: The information shown on these maps has been obtained from various sources, and are of varying age, reliability and resolution. These maps are not intended to be used for navigation, nor are these maps an authoritative source of information about legal land ownership or public access. No warranty, expressed or implied, is made as to the accuracy, applicability for a particular use, or the fitness, or legality of the information shown on this map. For more information, see the DNR Legal Notices web page: <http://dnr.wis.gov/legal/>

Note: Not all sites are mapped.

0.1 Miles

0.03

0

0.1



1:1,980

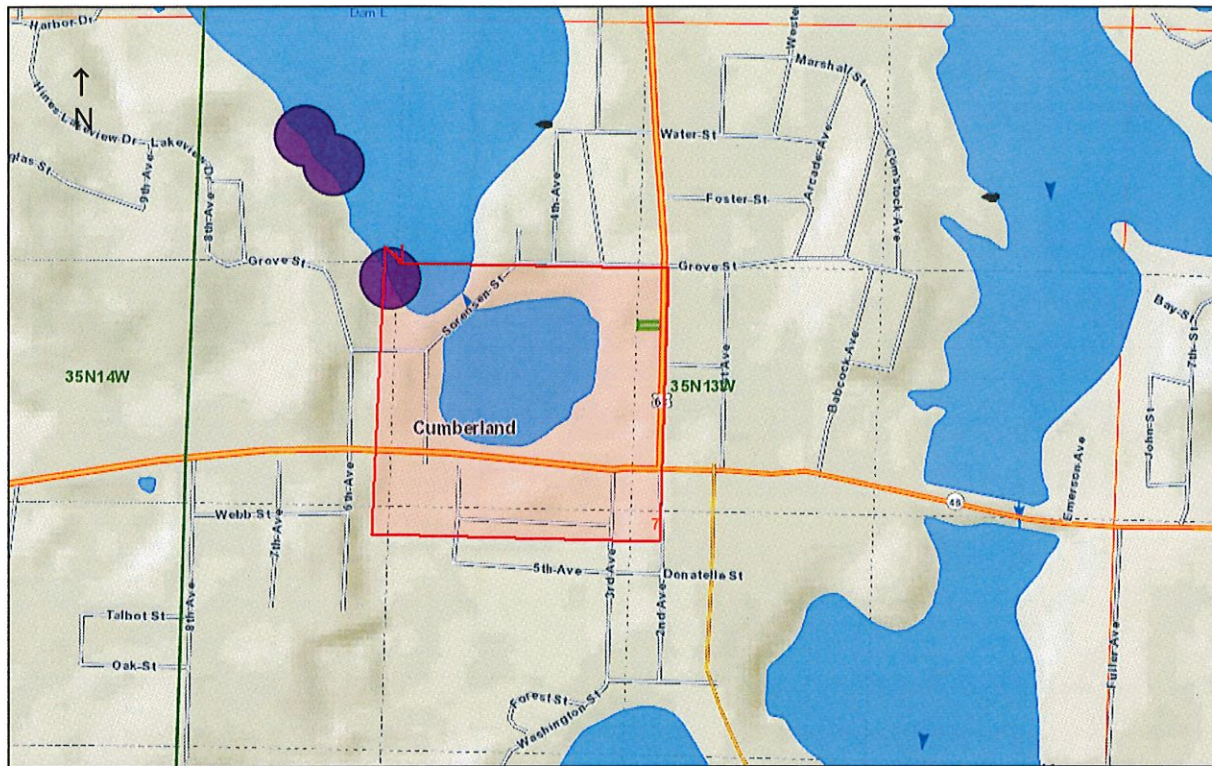
NAD_1983_HARN_Wisconsin_TM

© Latitude Geographics Group Ltd.



Disclaimer: This map represents the known occurrences of rare species and natural communities that have been recorded in the Wisconsin Natural Heritage Inventory (NHI). Data provided by NHI are not based on a comprehensive rare species inventory of the state. The lack of data shall not be construed to mean that no significant features are present. NHI data is exempt from State of Wisconsin Open Records Law. The Wisconsin NHI is solely responsible for distributing NHI data to authorized users. These data shall not be provided to anyone outside of the DNR.

Library Lake Stormwater BMP



April 16, 2015

- █ Project Area
- EN_LNDNT_TWNSHP_THIN_AR_24K
- ATC_Transmission_Lines

