

Little Manitowoc Conservancy Restoration
 2.5 miles of stream length with habitat improvements
 Total of 232 acres of phragmites treated for entire project area
 Slide One: Hwy B to Reed Avenue

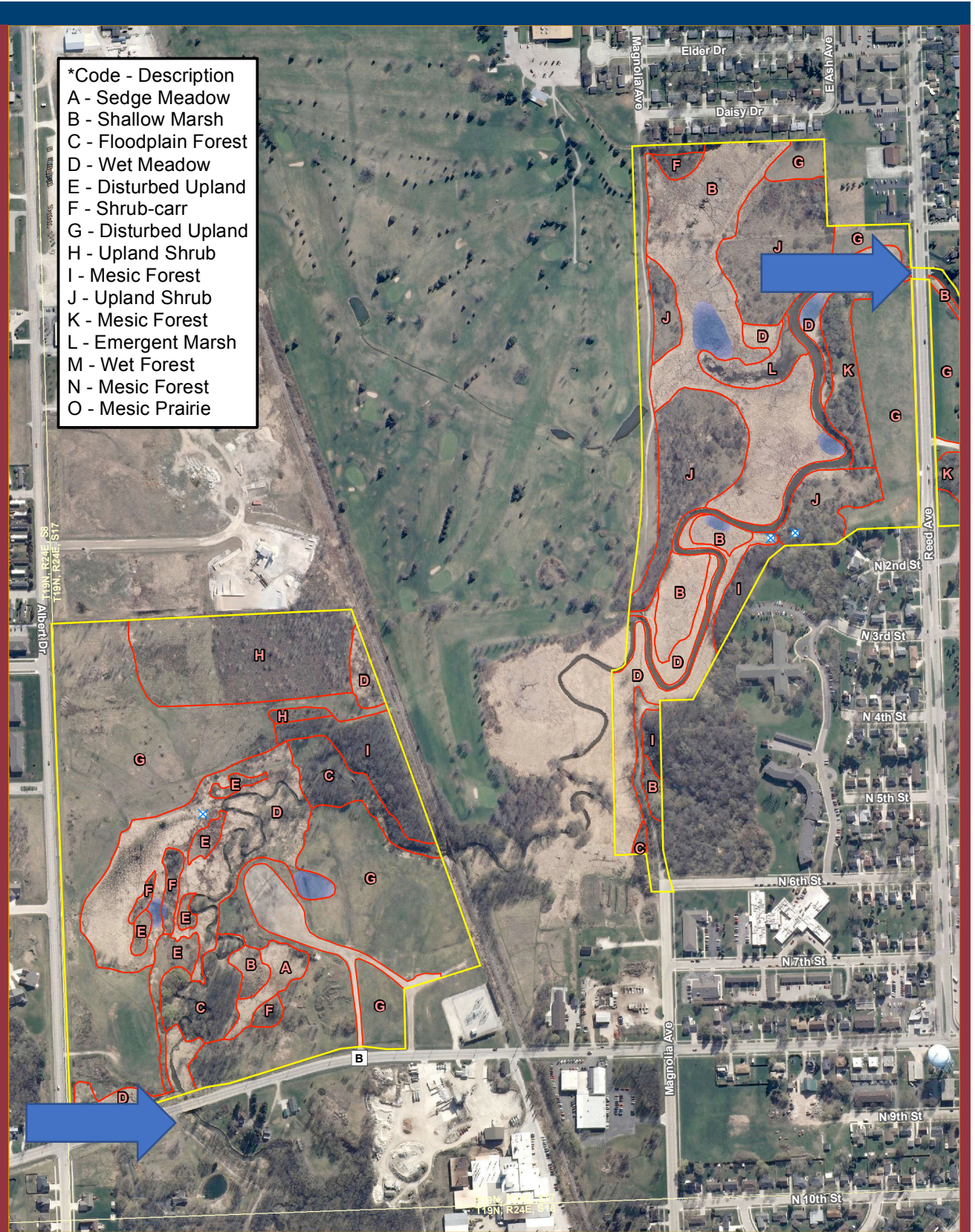


Figure 4. Community Types
 Little Manitowoc River Habitat Assessment

<p>Map Area Shown in Red</p>	<p>Location Manitowoc Co., WI</p> <p>Project Information Project Number: 193701124 Last Modified: December 14, 2012</p>	<p>Legend</p> <ul style="list-style-type: none"> Study Area Community Type* Spring Invasive Species <ul style="list-style-type: none"> Common reed grass (<i>Phragmites australis</i>) Japanese knotweed (<i>Polygonum cuspidatum</i>) 	<table border="1"> <thead> <tr> <th>Prepared by</th> <th>Initials</th> <th>Date</th> </tr> </thead> <tbody> <tr> <td>AB</td> <td></td> <td>12/14/2012</td> </tr> <tr> <td>Peer Review by</td> <td>MP</td> <td>12/14/2012</td> </tr> <tr> <td>Final Review by</td> <td></td> <td></td> </tr> </tbody> </table> <p>DRAFT</p> <p><small>The information on this map has been compiled by Stantec staff from a variety of sources and is subject to change without notice. Stantec makes no representations or warranties, express or implied, as to accuracy, completeness, timeliness, or rights to the use of such information.</small></p> <p>stantec.com</p>	Prepared by	Initials	Date	AB		12/14/2012	Peer Review by	MP	12/14/2012	Final Review by		
	Prepared by	Initials	Date												
AB		12/14/2012													
Peer Review by	MP	12/14/2012													
Final Review by															
<p>0 200 400 Feet</p> <p><small>Data Sources include: Stantec and WDOT. Orthophotography: 2010 WRCC.</small></p>															

Little Manitowoc Conservancy Restoration

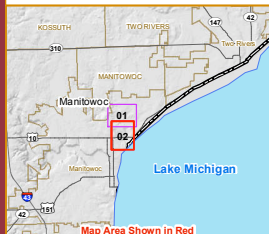
38 acres of wetland restoration

2.5 miles of stream length with habitat improvements

Slide Two: Reed Avenue to Lake Michigan



Figure 4. Community Types
Little Manitowoc River Habitat Assessment



Location
Manitowoc Co., WI

Project Information
Project Number: 193701124
Last Modified: December 14, 2012

0 200 400
Feet

Legend

- Study Area
- Community Type*
- Spring
- Invasive Species
- Common reed grass (*Phragmites australis*)
- Japanese knotweed (*Polygonum cuspidatum*)

Data Sources include: Stantec and WDOT.
Orthophotography: 2010 WRCC.

Stantec

Prepared by	Initials	Date
AB		12/14/2012
Peer Review by	MP	12/14/2012
Final Review by		

DRAFT

The information on this map has been compiled by Stantec staff from a variety of sources and is subject to change without notice. Stantec makes no representations or warranties, express or implied, as to accuracy, completeness, timeliness, or rights to the use of such information.

stantec.com