
Presque Isle Wilderness Waters Program

Aquatic Plant Management Plan – South Branch Presque Isle River

Prepared for:

Presque Isle Town Lakes Committee
Contact: Otto Novak
P.O. Box 37
Presque Isle, Wisconsin 54557

Prepared by:

White Water Associates, Inc.
Contact: Dean Premo, Ph.D.
429 River Lane, P.O. Box 27
Amasa, Michigan 49903



Date: March 2019

Presque Isle Wilderness Waters Program

Aquatic Plant Management Plan – South Branch Presque Isle River

This plan is a product of a WDNR Lake Planning Grant awarded to:

Presque Isle Town Lakes Committee
P.O. Box 37
Presque Isle, Wisconsin 54557
Contact: Otto Novak
Phone: (715) 686-2628; E-mail: oandlnovak@gmail.com

Submitted to:

Wisconsin Department of Natural Resources
Attention: Kevin Gauthier, Sr., Water Resource Management Specialist
8770 Hwy J
Woodruff, WI 54568
Phone: (715) 365-5211 ext. 214; Email: Kevin.GauthierSr@wisconsin.gov

Prepared by:

White Water Associates, Inc.
Dean Premo, Ph.D., Angie Stine, B.S., and Kent Premo, M.S.
429 River Lane, P.O. Box 27
Amasa, Michigan 49903
Phone: (906) 822-7889; E-mail: dean.premo@white-water-associates.com

Cite as: Premo, Dean, Angie Stine, and Kent Premo. 2019. Presque Isle Wilderness Waters Program: South Branch Presque Isle River Aquatic Plant Management Plan. White Water Associates, Inc.



TABLE OF CONTENTS

Chapter 1. Introduction	1
Chapter 2. Study Area	4
Chapter 3. Purpose and Goal Statements	8
Chapter 4. Information and Analysis	9
Part 1. Watershed	9
Part 2. Aquatic Plant Management History	13
Part 3. Aquatic Plant Community Description	13
Part 4. Fish Community	17
Part 5. Water Quality and Trophic Status	18
Part 6. Water Use	18
Part 7. Riparian Area	18
Part 8. Wildlife	19
Part 9. Stakeholders	20
Chapter 5. Recommendations, Actions, and Objectives	21
Chapter 6. Contingency Plan for AIS	27
Appendix A – Literature Cited	
Appendix B – Tables and Figures	
Appendix C – Review of South Branch of the Presque Isle River Water Quality	

CHAPTER 1

Introduction

The *Presque Isle Wilderness Waters Program* results from the efforts of the Presque Isle Town Lakes Committee, an organization that has been active since 2005. The Lakes Committee views stewardship of lakes as an ongoing endeavor that is integrated, coordinated, and administered by the Lakes Committee. This broader perspective accommodates the appropriate range of geographic scales from which to approach lake stewardship: a discrete “lake specific” focus that goes hand-in-hand with waterscape-wide awareness.

The Presque Isle Town Lakes Committee also includes streams within its purview and as such, this aquatic plant management plan addresses the South Branch Presque Isle River. Although it addresses a single body of water, the plan maintains the waterscape perspective crucial to effective resource stewardship. This is especially important when it comes to preventing introduction and establishment of aquatic invasive species (AIS). The closely related *Wilderness Waters Adaptive Management Plan* (Stine *et al.*, 2019) provides additional overarching waterscape level examination that allows greater opportunity and efficiency in water resource management and education.

A systematic survey of aquatic plants using the Wisconsin Department of Natural Resources (WDNR) “point-intercept” method was an important underpinning of this aquatic plant management plan. An analysis of the plant data along with water quality and other stream information allowed the preparation of the plan.

Aquatic plants rarely get the respect they merit, although this is slowly changing. We still call an aquatic plant bed a “weed bed.” Many aquatic plants have “weed” in their names (e.g., duckweed, pondweed, or musky weed). Likely this term was borrowed from “seaweed” and not intended as derogatory, but in today’s use, “weed” connotes an unwanted, aggressively growing plant. Such is not the case for the vast majority of aquatic plants. In fact, aquatic plants are a vital part of a stream ecosystem, recycling nutrients, providing vertical and horizontal structure, and creating habitat for animal life. Invertebrates, including crustaceans and insects, live on or within this “aquatic forest.” Fish find food and shelter within aquatic plant beds. Waterfowl eat parts of plants directly as well as feed on invertebrates associated with the plants. Muskrats eat aquatic plants and particularly love cattails and bulrushes. Otter and mink hunt invertebrates and small

vertebrates within the shelter of submergent and emergent beds. In shallow water, great blue herons find fishes among the plants.

In bodies of water that receive an excess of nutrients (particularly from fertilizers or leaking septic tanks), plant growth can become too lush or dominated by only a few species. As these abundant plants die, their decomposition can depress dissolved oxygen levels and diminish suitability for fish. Algae can respond rapidly to nutrient influxes and create nuisance conditions. These phenomena can cause humans to view all aquatic plants in a negative light.

On another negative front, non-native plant species, transported on boats and trailers or dumped from home aquariums, private ponds and water gardens may come to dominate a water body to the exclusion of a healthy diversity of native species. Eurasian water-milfoil (*Myriophyllum spicatum*) is one of the better known examples of these so-called aquatic invasive plant species.

For most bodies of water, native aquatic plants are an overwhelmingly positive attribute, greatly enhancing the aesthetics of the river and providing good opportunities for fishing, boating, swimming, snorkeling, sight-seeing, and hunting.

When it comes to aquatic plant management, it is useful to heed the mantra of the medical profession: “First, do no harm.” It is both a social and scientific convention that aquatic plant management is more effective and beneficial when a river is considered as an entire and integrated ecosystem. Anyone involved in aquatic plant management should be aware that a permit may be required to remove, add, or control aquatic plants. In addition, anyone using Wisconsin’s lakes, rivers or creeks must comply with the “Boat Launch Law” that addresses transport of aquatic plants on boat trailers and other equipment. A good review of the laws, permits, and regulations that affect management and behavior surrounding aquatic plants can be found in the WDNR guidelines called *Aquatic Plant Management in Wisconsin*.¹

In preparing this plan, we followed guidelines in *Aquatic Plant Management in Wisconsin*. The resulting plan is an adaptive plan (Walters 1986). Simply put, it will be modified as new information becomes available. The WDNR Guidance document outlines three objectives that may influence preparation of an aquatic plant management plan:

- **Protection** - preventing the introduction of nuisance or invasive species into waters where these plants are not currently present;
- **Maintenance** - continuing the patterns of recreational use that have developed historically on and around a body of water; and

¹ <http://www4.uwsp.edu/cnr/uwexlakes/ecology/APM/APMguideFull2010.pdf>

-
- **Rehabilitation** - controlling an imbalance in the aquatic plant community leading to the dominance of a few plant species, frequently associated with the introduction of invasive non-native species.

Currently, the motivation for this plan lies in the first two objectives. The South Branch Presque Isle River is a tremendous resource with good water quality and a diverse and interesting community of aquatic plants. It also has a recreational history and current human use that has caused only moderate degradation to the ecosystem.

During projects with the WDNR Planning Grant Program and through past efforts, the Town Lakes Committee has followed the seven-step plan outlined in the Guidance Document for developing an aquatic plant management plan:

1. Goal setting – Getting the effort organized, identifying problems to be addressed, and agreeing on the goals;
2. Inventory – Collecting baseline information to define the past and existing conditions;
3. Analysis – Synthesizing the information, quantifying and comparing the current conditions to desired conditions, researching opportunities and constraints, and setting directions to achieving the goals;
4. Alternatives – Listing possible management alternatives and evaluating their strengths, weaknesses and general feasibility;
5. Recommendations – Prioritizing and selecting preferred management options, setting objectives, drafting the plan;
6. Implementation – Formally adopting the plan, lining up funding, and scheduling activities for taking action to achieve the goals;
7. Monitor & Modify – Developing a mechanism for tracking activities and adjusting the plan as it evolves.

Besides this introductory chapter, this plan is organized in six Chapters. The study area is described in Chapter 2. Chapter 3 states the purpose and goals for the plan. Chapter 4 presents an inventory and analysis of information that pertain to the plan including the results of the aquatic plant survey. Chapter 5 provides recommendations that support the overall goals and establish the stewardship component of plan. Finally, Chapter 6 presents actions and objectives for implementing the plan. Three appendices complete this document. Appendix A contains literature cited, Appendix B contains tables and figures for the aquatic plant survey, and Appendix C contains a *Review of South Branch Presque Isle River Water Quality*.

CHAPTER 2

Study Area

Presque Isle Township is one of the northern-most townships in Vilas County, Wisconsin. Presque Isle Township's northern border is shared with the State of Michigan. In fact some of the Presque Township lakes lie on the state border. The location of the subject of this APM Plan (South Branch Presque Isle River) is shown in Exhibit 1 along with other bodies of water in Presque Isle Township that have had point-intercept aquatic plant surveys conducted. Exhibit 2 is an aerial view of the portion of the South Branch Presque Isle River covered by this report.

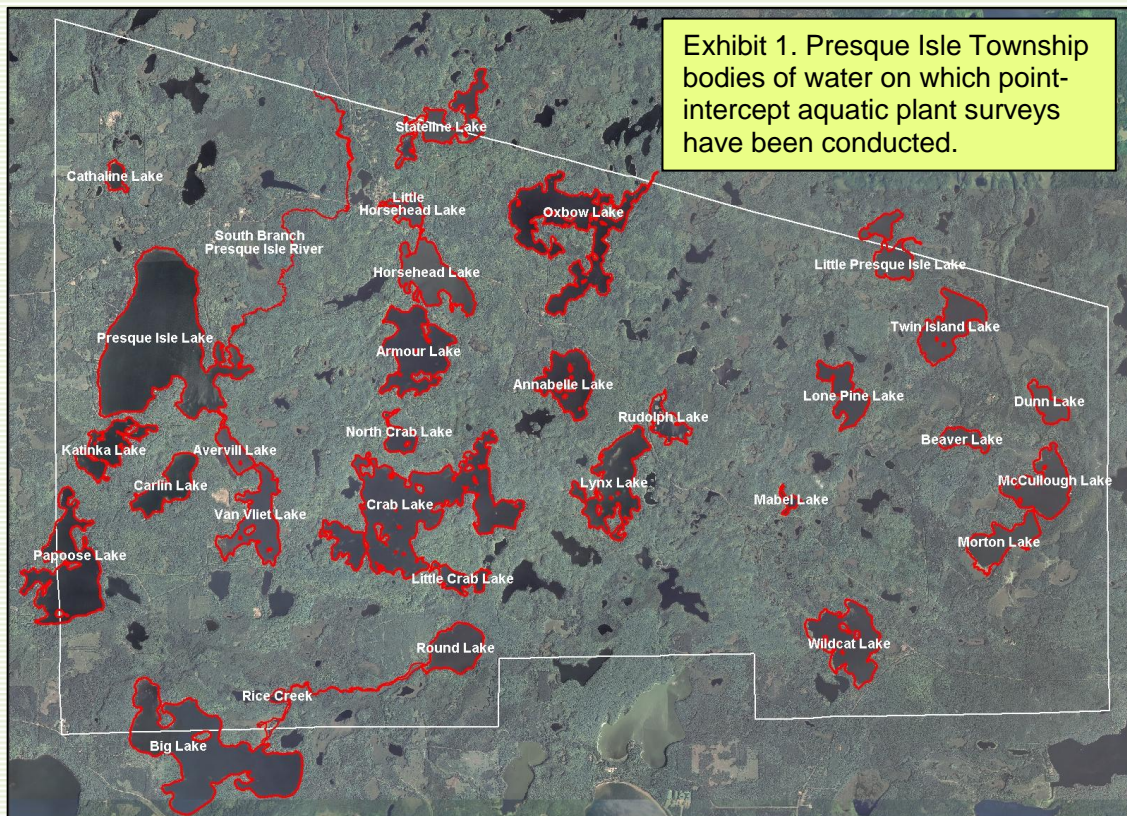


Exhibit 2. Aerial photo of the portion of the South Branch Presque Isle River addressed in this report.



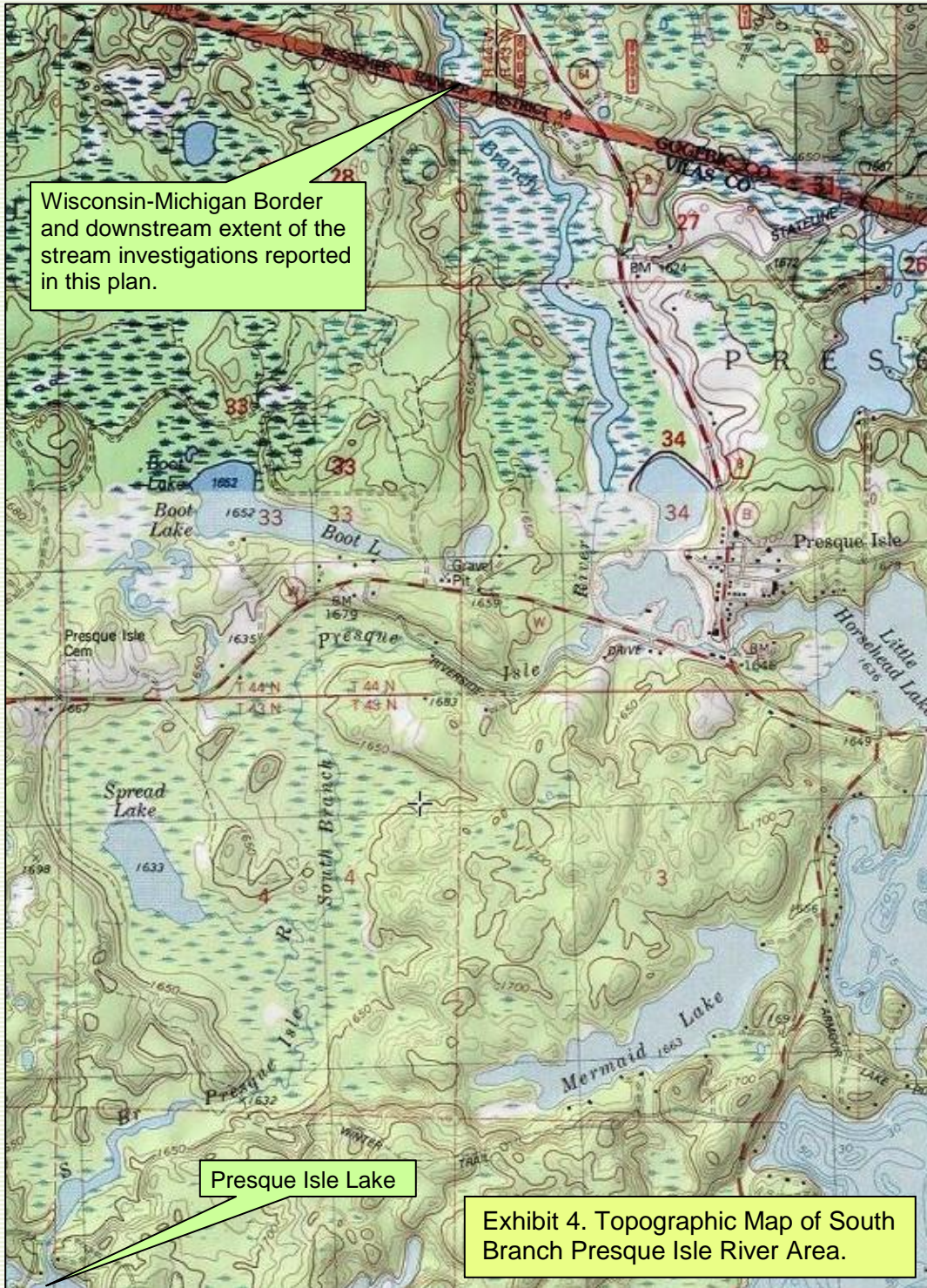
“Almost an island” is the literal translation of the French phrase “Presque Isle.” Early French missionaries, perhaps disoriented by the preponderance of water in this north central Wisconsin landscape applied the name, “Presque Isle” to describe an area where the water seemed to dominate the land. The French visitors and Native Americans certainly recognized this

landscape as special. Modern ecologists and recreationist share this view. The region that includes the Township of Presque Isle, Wisconsin is an ecological landscape marvelously rich in surface waters. Aerial photography reveals a concentration of lakes and streams that is unique in North America. Presque Isle Township has eighty-four lakes. The Presque Isle area could as easily be termed a “waterscape” as a “landscape.”

Descriptive parameters for the South Branch Presque Isle River are in Exhibit 3. It is part of the Presque Isle River (Michigan) drainage and flows in a northerly direction from Presque Isle Lake for 4.7 miles to where it crosses the Michigan-Wisconsin border. Throughout this reach, its average width is 25 feet.

Exhibit 3. Water Body Parameters	
Water Body Name	South Branch Presque Isle River
County	Vilas
Township/Range/Section	T43N-R06E-S4,S8,S9 T44N-R06E-S27,S28,S33,S34
Water Body Identification Code	2951600
Water Body Type	River
Maximum Length (miles)	4.7
Average Width (feet)	25

The South Branch Presque Isle River has no public access site, however access to the river can be gained through Presque Isle Lake. The riparian area consists of both upland and wetland areas (Exhibit 4).



Wisconsin-Michigan Border and downstream extent of the stream investigations reported in this plan.

Presque Isle Lake

Exhibit 4. Topographic Map of South Branch Presque Isle River Area.

CHAPTER 3

Purpose and Goal Statements

This plan approaches aquatic plant management with a healthy dose of humility. We do not always understand the causes of environmental phenomena or the effects of our actions to manage the environment. With that thought in mind, we have crafted a statement of purpose and goals for this plan:

The South Branch Presque Isle River has a healthy and diverse aquatic plant community that was documented by a point-intercept aquatic plant survey. This plant community is essential to, and part of, a high quality aquatic ecosystem that benefits the human community with its recreational and aesthetic features. The purpose of this aquatic plant management plan is to maintain the aquatic plant community in its present high quality state.

Supporting this purpose, the goals of this aquatic plant management plan are:

- (1) Monitor and protect the native aquatic plant community;*
- (2) Prevent establishment of AIS and nuisance levels of native plants;*
- (3) Promote and interpret APM efforts; and*
- (4) Educate riparian owners and lake and stream users on preventing AIS introduction, reducing nutrient inputs that potentially alter the plant community, and minimizing physical removal of native riparian and littoral zone plants.*

The purpose and goals are the foundation for the aquatic plant management plan presented in this document. They inform the objectives and actions outlined in Chapter 5 and are the principal motivation of the South Branch Presque Isle River stewards.

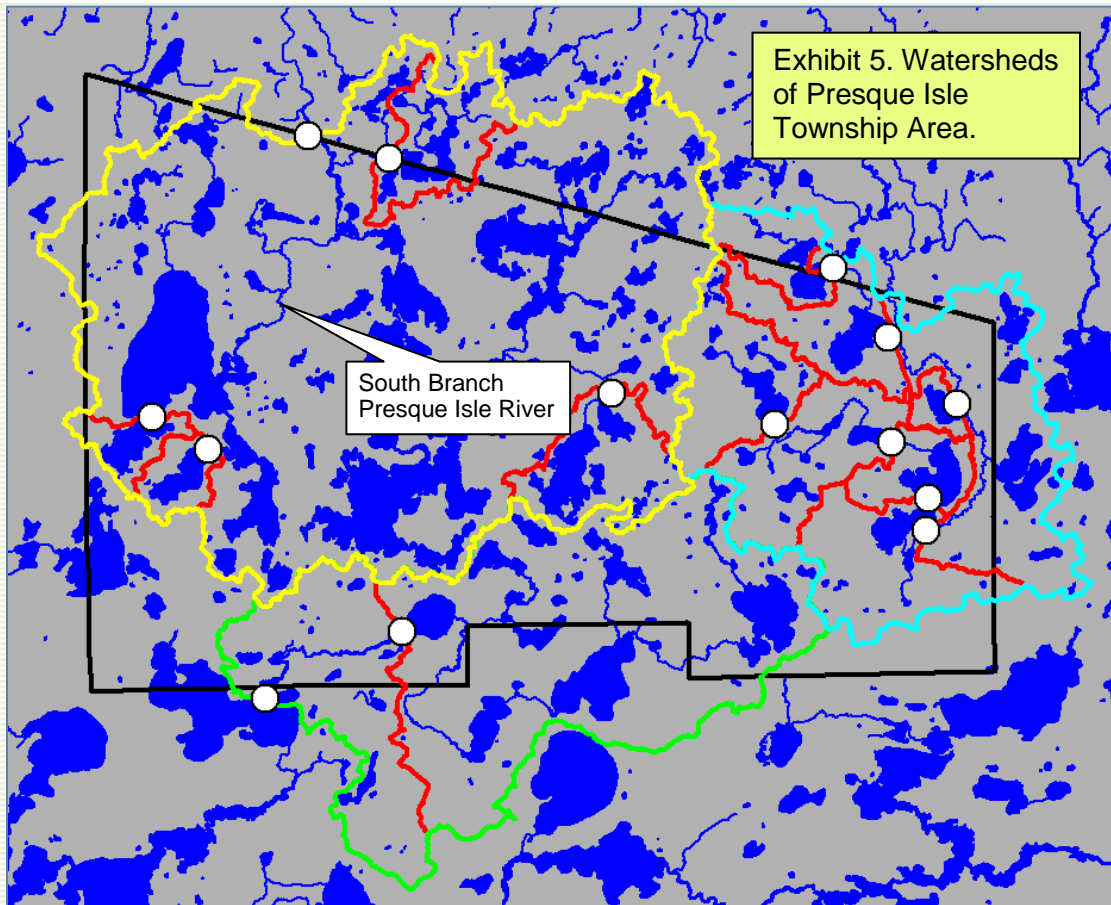
CHAPTER 4

Information and Analysis

Our efforts in the Wilderness Waters Program have compiled information about historical and current conditions of the South Branch Presque Isle River ecosystem and its surrounding watershed. Of particular importance to this aquatic plant management plan is the aquatic plant survey that was conducted using the *WDNR Protocol for Aquatic Plant Survey, Collecting, Mapping, Preserving, and Data Entry* (Hauxwell et al., 2010). The results of this comprehensive “point-intercept” survey along with relevant components of other information are presented in this chapter under nine respective subheadings: watershed, aquatic plant management history, aquatic plant community description, fish community, water quality and trophic status, water use, riparian area, wildlife, and stakeholders.

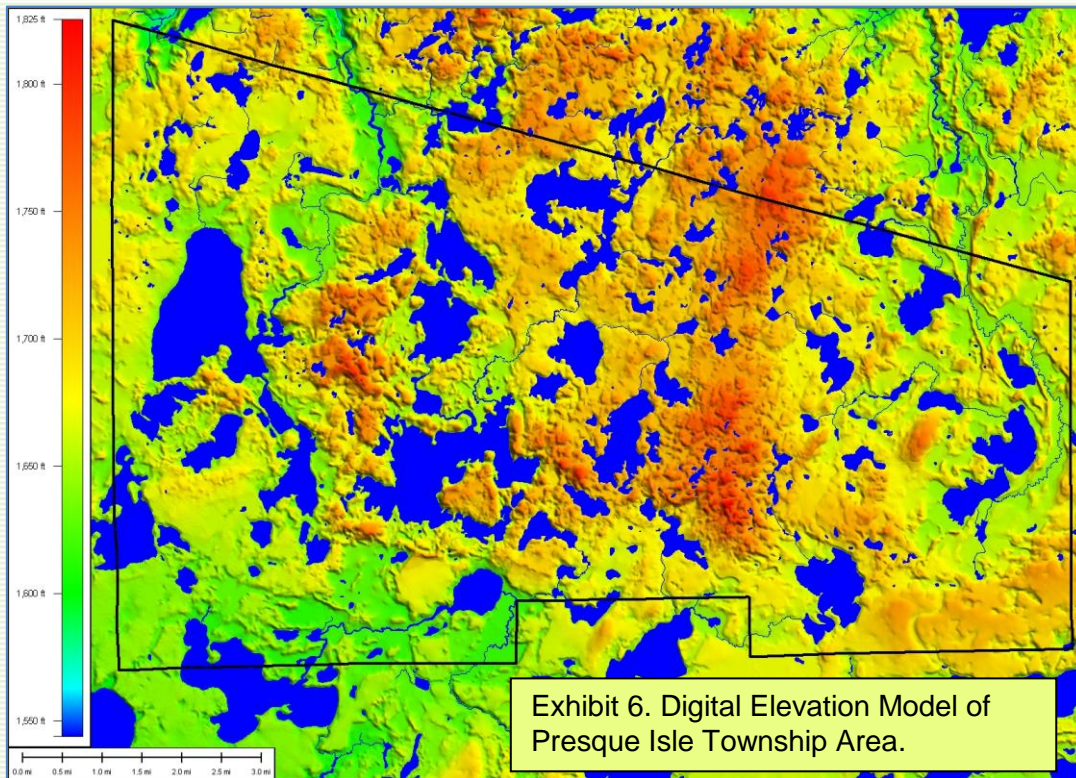
Part 1. Watershed

The Presque Isle Township waterscape sits on a large-scale watershed divide. Some of the water drains north through the Presque Isle River system and eventually enters Lake Superior. Some of the water drains into the Wisconsin River system to the Mississippi River and to the Gulf of Mexico. In fact there are two federal hydrologic sub-basins (designated by 8-digit HUC codes) that include Presque Isle Township. The Black-Presque Isle Rivers sub-basin (HUC#04020101) drains north to Lake Superior and the Flambeau River sub-basin (HUC#0705002) drains southwesterly to the Mississippi River. The Black-Presque Isle Rivers sub-basin contains two federal hydrologic sub-watersheds within Presque Isle Township: the South Branch Presque Isle River sub-watershed (HUC#040201010303) and the Pomeroy Creek-East Branch Presque Isle River sub-watershed (HUC#040201010301). The Flambeau River sub-basin contains one sub-watershed within Presque Isle Township: the Rice Creek sub-watershed (HUC#07050020103). Exhibit 5 illustrates these watersheds and the watersheds of the water bodies subject to the Wilderness Waters Program studies. The South Branch Presque Isle River is contained within the South Branch Presque Isle River sub-watershed (Exhibit 5).



Description: Portions of 3 federal hydrologic sub-watersheds are illustrated: (1) S.Br. Presque Isle River (bounded by yellow), (2) Pomeroy Cr-E.Br. Presque Isle River (bounded by blue and yellow), and (3) Rice Cr. (bounded by green, yellow, and blue). Also shown are the smaller watersheds of individual water bodies subject to the Wilderness Waters studies (bounded by red). White dots show outlet points for the smaller watersheds.

The elevation in Presque Isle Township ranges from around 1,550 feet above sea level to 1,750 feet above sea level. A digital elevation model is provided as Exhibit 6 and shows the relative elevations for the area with orange areas of the landscape being the highest elevations and greens and blues being the lowest elevations.



The watershed (drainage basin) is all of the land and water areas that drain toward a particular water body. A water body is greatly influenced by its watershed. Watershed size, topography, geology, land use, soil fertility and erodibility, and vegetation are all factors that influence water quality. The South Branch Presque Isle River watershed is about 29,612.5 acres. It is identified in Exhibit 5 and bounded by the red and yellow lines. The cover types in the watershed are presented in Exhibit 7. Forest and surface water are the largest components. All soil groups (A, B, C, and D) are present. Soil group B covers over 50% of the watershed, followed by group D at 35%. Combined, soil groups A and C cover less than 10% of the watershed. Infiltration rates rank from highest to lowest, with A having the highest and D having the lowest. Water quality often decreases with an increasing ratio of watershed area to lake area. As the ratio increases there are more sources and amounts of runoff. In larger watersheds, runoff water can leach more minerals and nutrients and carry them to the river. The runoff to a river (such as after a rainstorm or snowmelt) differs greatly among land uses. Forest cover is the most

protective as it exports much less soil (through erosion) and nutrients (such as phosphorus and nitrogen) to the river than agricultural or urban land use.

Exhibit 7. Cover Types and Soil Groups of the South Branch Presque Isle River Watershed.			
Cover Type		Acres	Percent
Agriculture		83.6	0.3
Commercial		0	0
Forest		16229	54.8
Grass/Pasture		64.1	0.2
High-density Residential		27.9	0.1
Low-density Residential		1846.4	6.2
Water		11361.5	38.4
Total		29612.5	100.0
Soil Group	Acres	Percent	Hydrologic Soil Groups - Soils are classified by the Natural Resource Conservation Service into four Hydrologic Soil Groups* based on the soil's runoff potential. The four Hydrologic Soils Groups are A, B, C and D. Where A has the smallest runoff potential and D the greatest.
A	2059.5	7.0	Group A is sand, loamy sand or sandy loam types of soils. It has low runoff potential and high infiltration rates even when thoroughly wetted. They consist chiefly of deep, well to excessively drained sands or gravels and have a high rate of water transmission.
B	16672.4	56.3	Group B is silt loam or loam. It has a moderate infiltration rate when thoroughly wetted and consists chiefly or moderately deep to deep, moderately well to well drained soils with moderately fine to moderately coarse textures.
C	394.3	1.3	Group C soils are sandy clay loam. They have low infiltration rates when thoroughly wetted and consist chiefly of soils with a layer that impedes downward movement of water and soils with moderately fine to fine structure.
D	10486.3	35.4	Group D soils are clay loam, silty clay loam, sandy clay, silty clay or clay. This soil has the highest runoff potential. They have very low infiltration rates when thoroughly wetted and consist chiefly of clay soils with a high swelling potential, soils with a permanent high water table, soils with a claypan or clay layer at or near the surface and shallow soils over nearly impervious material.

*(USDA, Natural Resources Conservation Service, 1986)

Part 2. Aquatic Plant Management History

As far as we can determine, no systematic or large-scale plant management activity has ever taken place in the South Branch Presque Isle River. Over the years, no particular nuisance issues have been documented. It is our understanding that the plant survey conducted as part of the 2010/2011 Wilderness Water Program was the first effort of its kind on this water body. Another survey was conducted in 2017.

Part 3. Aquatic Plant Community Description

Why do rivers need aquatic plants? In many ways, they are underwater forests. Aquatic plants provide vertical and horizontal structure in the river just like the many forms and variety of trees do in a forest. Imagine how diminished a forest's biodiversity becomes in the advent of a clear-cut. Similarly, a stream's biodiversity in large part depends on a diversity of plants.

Aquatic plants are beneficial in many ways. Areas with plants produce more food for fish (insect larvae, snails, and other invertebrates). Aquatic vegetation offers fish shelter and spawning habitat. Many submerged plants provide food for waterfowl and habitat for insects on which some waterfowl feed. Aquatic plants further benefit rivers by producing oxygen and absorbing nutrients (phosphorus and nitrogen) from runoff. Aquatic plants also protect shorelines and substrate by dampening wave action and current action and stabilizing sediments.

The distribution of aquatic plants is generally limited by light availability and substrate. Light availability is controlled by water transparency. In lakes, aquatic biologists often estimate the depth to which rooted aquatic plants can exist as about two times the average Secchi clarity depth. For example, if the average Secchi depth is eight feet then it is accurate to estimate that rooted plants might exist in water as deep as sixteen feet. At depths greater than that (in our hypothetical example), light is insufficient for rooted plants to grow. In many streams, including the South Branch of the Presque Isle River, the relatively shallow depth allows ample sunlight to penetrate to the substrate in most places. In addition to available light, the type of substrate influences the distribution of rooted aquatic plants. Plants are more likely to be found in muddy or soft sediments containing organic matter, and less likely to occur where the substrate is sand, gravel, or rock. Finally, water chemistry influences which plants are found in a body of water. Some species prefer alkaline water while others prefer more acidic conditions. The presence of nutrients like phosphorous and nitrogen also influence plant community composition.

As mentioned earlier, non-native invasive plant species can reach high densities and wide distribution within a body of water. This diminishes the native plant community and the related

habitat. At times, even a native plant species can reach nuisance levels with respect to certain kinds of human recreation.

We conducted a point-intercept aquatic plant survey on The South Branch Presque Isle River in summer of 2017. Since the WDNR point-intercept protocol is designed for lakes and impoundments, we modified it to accommodate the more linear habitat found in a stream. In the laboratory, we used the hydro layer centerline down the stream and using GIS software, placed points every 75 meters along the centerline of the subject stream reach. In the case of the South Branch of the Presque Isle River, the stream reach went from Presque Isle Lake downstream (north) to the Wisconsin-Michigan border. The coordinates for these centerline points were those to which the field crew navigated. Using latitude-longitude coordinates and a handheld GPS unit, we navigated to the center line points and dropped the rake to obtain an aquatic plant sample. We used a rake mounted on a pole to sample plants. Plants were identified and recorded, and put into a dedicated spreadsheet for storage and data analysis. This formal survey assessed the plant species composition throughout the stream reach we sampled. This systematic survey provides baseline data about the stream. Future monitoring will be able to identify and track changes in the plant community. Changes in a stream environment might manifest as loss of species, change in species abundance or distribution, difference in the relative composition of various plant life forms (emergent, floating leaf, or submergent plants), and/or appearance of an AIS or change in its population size. Monitoring can track changes and provide valuable insight on which to base management decisions. In the remainder of this section we report the findings of the point-intercept aquatic plant survey. The supporting tables and figures for the aquatic plant survey are provided in Appendix B.

Species richness refers to the total number of species recorded. We recorded 40 species of aquatic plants on the South Branch of the Presque Isle River in 2017. Of these, 25 were collected at sampling sites and the others were observed from the boat at the sample sites. Table 1 displays summary statistics for the 2010 and 2017 surveys. Table 2 provides a list of the species encountered in 2017, including common and scientific name along with summarizing statistics.² The number of species encountered at any given sample point ranged from 0 to 7 and 74 sample points were found to have aquatic vegetation present. The average number of species encountered at these vegetated sites was 2.12. The actual number of species encountered at each of the vegetated sites is graphically displayed on Figure 1. Plant density is estimated by a “rake

² *If you are interested in learning more about the plant species found in the lake, visit the University of Wisconsin Steven Point Freckmann Herbarium website at: <http://wisplants.uwsp.edu/> or obtain a copy of “Through the Looking Glass (A Field Guide to the Aquatic Plants in Wisconsin).”*

fullness” metric (3 being the highest possible density). These densities (considering all species) are displayed for each sampling site on Figure 2.

The maximum depth of plant colonization is 6 feet (Table 1 and Figure 3). Rooted vegetation was found at 74 of the 105 sample sites with depth \leq the maximum depth of plant colonization (70.48% of sites). These sites are displayed as a black dot within a circle on Figure 4. This indicates that although availability of appropriate depth may limit the distribution of plants, it is not the only habitat factor involved. Substrate is another feature that influences plant distribution (e.g., soft substrate often harbors more plants than hard substrate). Figure 5 presents the substrates encountered during the aquatic plant survey (mud, sand, or rock).

Table 2 provides information about the frequency of occurrence of the plant species recorded in the river. Several metrics are provided, including total number of sites in which each species was found and frequency of occurrence at sites \leq the maximum depth of rooted vegetation. This frequency metric is standardized as a “relative frequency” (also shown in Table 2) by dividing the frequency of occurrence for a given species by the sum of frequency of occurrence for all plants and multiplying by 100 to form a percentage. The resulting relative frequencies for all species total 100%. The relative frequencies for the plant species collected with a rake are graphically displayed in descending order on Figure 6. This display shows that *Sparganium fluctuans* (Floating-leaf bur-reed) had the highest relative frequency followed by *Potamogeton zosteriformis* (Flat-stem pondweed). Figure 7 displays sampling sites with emergent and floating aquatic plants. As examples of individual species distributions, we show the occurrences of a few of the most frequently and least frequently encountered plants in Figures 8-15. Table 3 shows the 2010 plant finds and their frequencies of occurrence.

Species richness (total number of plants recorded at the river) is a measure of species diversity, but it doesn’t tell the whole story. As an example, consider the plant communities of two hypothetical ponds each with 1,000 individual plants representing ten plant species (in other words, richness is 10). In the first pond each of the ten species populations is comprised of 100 individuals. In the second pond, Species #1 has a population of 991 individuals and each of the other nine species is represented by one individual plant. Intuitively, we would say that first pond is more diverse because there is more “even” distribution of individual species. The “Simpson Diversity Index” takes into account both richness and evenness in estimating diversity. It is based on a plant’s relative frequency in a lake. The closer the Simpson Diversity Index is to 1, the more diverse the plant community. The Simpson Diversity Index for The South Branch

Presque Isle River aquatic plants is 0.94 (2010) and 0.89 (2017) (Table 1) which indicates a highly diverse aquatic plant community.

Another measure of floristic diversity and quality is the *Floristic Quality Index* (FQI). Floristic quality is an assessment metric designed to evaluate the closeness that the flora of an area is to that of undisturbed conditions (Nichols 1999). Among other applications, it forms a standardized metric that can be used to compare the quality of different bodies of water (or different locations within a single body of water) and monitor long-term changes in a river's plant community (an indicator of river health). The FQI for a river is determined by using the average *coefficient of conservatism* times the square root of the number of native plant species present in the river. Knowledgeable botanists have assigned to each native aquatic plant a *coefficient of conservatism* representing the probability that a plant is likely to occur in pristine environments (relatively unaltered from presettlement conditions). The coefficients range from 0 to 10, with 10 being assigned to those species most sensitive to disturbance. As more environmental disturbance occurs, the less conservative species become more prevalent.

Nichols (1999) analyzed aquatic plant community data from 554 Wisconsin Lakes to ascertain geographic (ecoregional) characteristics of the FQI metric. This is useful for considering how the South Branch Presque Isle River FQI (32.0-2010 and 31.0-2017) compares to other lakes, rivers, creeks and regions. The statewide medians for number of species and FQI are 13 and 22.2, respectively. The South Branch Presque Isle River values are quite high compared to these statewide values. Nichols (1999) determined that there are four ecoregional-lake types groups in Wisconsin: (1) Northern Lakes and Forests lakes, (2) Northern Lakes and Forests flowages, (3) North Central Hardwoods and Southeastern Till Plain lakes and flowages, and (4) Driftless Area and Mississippi River Backwater lakes. The South Branch Presque Isle River is located in the Northern Lakes and Forests lakes group. Nichols (1999) found species numbers for the Northern Lakes and Forests lakes group had a median value of 13. The South Branch Presque Isle River data is consistent with that find. Finally, the South Branch Presque Isle River FQI (31.0) is higher than the median value for the Northern Lakes and Forests lakes group (24.3). These findings support the contention that the South Branch Presque Isle River plant community is healthy and diverse.

We observed no aquatic plants in the South Branch Presque Isle River that would be considered a nuisance-level population density/distribution. Reed canary grass (*Phalaris arundinacea*) was observed as a visual sighting at 8 sites. It is considered a restricted species in Wisconsin. We found no state or federally listed species.

Wild rice (*Zizania palustris*) was observed as a visual sighting at 2 sites in the South Branch Presque Isle River aquatic plant survey in 2010 but was not noted in 2017.

Wild rice is an important food source for many waterfowl and animals. It also has cultural significance to the Anishinaabe (Chippewa or Ojibwa), who call it *manoomin* (GLIFWC, *Wild Rice* brochure). Because of its ecological and cultural importance, the Great Lakes Indian Fish and Wildlife Commission (GLIFWC) has systematically collected wild rice data, including: acreage, density, pounds collected by tribal and state peoples, and other useful data. GLIFWC also conducts aerial surveys of rice beds and maintains an aerial photography archive. Because the South Branch Presque Isle River wild rice numbers are minimal, they have not been reviewed in GLIFWC reports.

Other than the *Sparganium fluctuans* high frequency in 2017, the 2010 and 2017 plant communities on the South Branch of the Presque Isle River were quite similar. Exhibit 11 summarizes a few salient parameters. The FQI and SDI are essentially identical between the two surveys.

Exhibit 11. Comparison of Aquatic Plant Surveys Conducted on the South Branch of the Presque Isle.

	2010	2017
Survey Method	110 point-intercept grid	110 point-intercept grid
Species Richness	26	25
Percent Coverage	83.5	70.5
Dominant Species	Coontail	Floating-leaf bur-reed
Max Depth (ft)	6.0	6.0
FQI	32.0	31.0
SDI	0.94	0.89
Number of Native Species/Site	2.10	1.50

Part 4. Fish Community

It was beyond the scope of the current Wilderness Waters project to characterize the fish community and fish habitat of this water body.

Part 5. Water Quality and Trophic Status

Water quality data obtained for the South Branch of the Presque Isle River for 1963 (Black) and 1989 (DNR SWIMS database). On August, 17, 2010, a water sample was taken by White Water Associates. That water quality information is briefly summarized in this section, but more fully interpreted in Appendix C.

Only one dissolved oxygen reading was taken in the South Branch Presque Isle River and it was at a good level for aquatic life to flourish. Biochemical Oxygen Demand showed the South Branch Presque Isle River to be categorized as a healthy stream. Total suspended solids, total phosphorous, nitrogen, hardness, conductivity, calcium and magnesium would be considered low. The alkalinity was within range (a measure of a stream's buffering capacity against acid rain). The pH of the South Branch Presque Isle River was slightly alkaline.

Part 6. Water Use

The South Branch Presque Isle River has no public access site, however, access to the river can be gained through Presque Isle Lake. It is used by riparian owners and their guests for a variety of recreational activities. Land surrounding the river is owned both privately (including Forest Crop Law land) and by the State of Wisconsin.

Part 7. Riparian Area

Part 1 (Watershed) describes the larger riparian area context of the South Branch Presque Isle River. The near shore riparian area can be appreciated by viewing Exhibits 2 and 4. The river is lightly developed with a fairly intact forested riparian zone that extends for hundreds of feet back from the water. The riparian zone is typically emergent wetland and some forested wetland. This intact riparian area provides numerous important functions and values to the river. It effectively filters runoff to the river. It provides excellent habitat for birds and mammals. Trees that fall into the river from the riparian zone contribute important habitat elements to the body of water. Educating riparian owners as to the value of riparian areas is important to the maintenance of these critical areas.

The WDNR, in 2016, formulated a protocol called *Lake Shoreland and Shallows Habitat Monitoring* (WDNR 2016). It provides a standard methodology for surveying, assessing, and mapping habitat in lakeshore areas, including the Riparian buffer, Bank, and Littoral Zones (WDNR 2016). This information will be useful to local and regional resource managers, community stakeholders, and others interested in protecting and enhancing Wisconsin's lakes

and rivers (WDNR 2016). This protocol was designed for lakes and individual parcels along the lake. As with the point-intercept plant survey, we modified the method to accommodate the river system. We conducted an assessment (including photography) wherever human disturbance was observed. There were 16 such sites where survey sheets were completed. A woody habitat survey was also conducted by taking a GPS point where there was a log greater than 4 inches in diameter. Over 300 pieces of wood were documented in this way.

The data and photos for the assessment of shoreland area and shallows habitat for the South Branch of the Presque Isle River have been delivered to the WDNR. Any user can view the results in the Wisconsin Department of Natural Resources Lakes and AIS Mapping Tool found at: <https://dnr.wi.gov/lakes/viewer/>.

The South Branch of the Presque Isle River has excellent shallow water habitat and intact riparian area. The stewardship strategy for the portion of the river could primarily be one of protection of the current conditions and monitoring to detect changes over time.

Part 8. Wildlife

A study of wildlife was beyond the scope of the current study, but would be valuable to study and interpret in future iterations of the plan. This would be especially true of wetland and water oriented wildlife such as frogs, waterfowl, fish-eating birds, aquatic and semi-aquatic mammals, and invertebrate animals. In the future, it would be desirable to monitor indicator species of wildlife such as common loons and bald eagles. Also of special importance would be monitoring for the presence of aquatic invasive animal species (for example, rusty crayfish or zebra mussel) and fish species (for example, common carp).

The South Branch Presque Isle River is currently designated as an *area of special natural resource interest* (ASNRI) (WDNR, 2012a). A water body designated as an ASNRI can be any of the following: WDNR trout streams; Outstanding or Exceptional Resource Waters (ORW/ERW); waters or portions of waters inhabited by endangered, threatened, special concern species or unique ecological communities; wild rice waters; waters in ecologically significant coastal wetlands along Lake Michigan and Superior; or federal or state waters designated as wild or scenic rivers (WDNR, 2012a). The South Branch Presque Isle River is considered an ASNRI because it inhabits state or federally designated threatened or endangered species. The Wisconsin Natural Heritage Inventory (NHI) lists the following plants and animals as rare or sensitive species and/or communities that are considered high-quality and significant natural features. They are found in the same town/range as the South Branch Presque Isle River (NHI, 2013).

**Exhibit 8. Rare species and communities located near
the South Branch Presque Isle River.**

<i>Common Name</i>	<i>Scientific Name</i>	<i>State Status</i> ³	<i>Group Name</i>
Trumpeter swan	<i>Cygnus buccinators</i>	SC/M	Bird
Bald eagle	<i>Haliaeetus leucocephalus</i>	SC/P	Bird
A predaceous diving beetle	<i>Agabus wasastjerna</i>	SC/N	Beetle
Fairy slipper	<i>Calypto bulbosa</i>	THR	Plant
Downy willow-herb	<i>Epilobium strictum</i>	SC	Plant
Arrow-leaved Sweet-coltsfoot	<i>Petasites sagittatus</i>	THR	Plant
Boreal rich fen		NA	Community
Emergent marsh-wild rice		NA	Community
Ephemeral pond		NA	Community
Lake-deep, soft, seepage		NA	Community
Lake-spring		NA	Community
Northern mesic forest		NA	Community
Northern wet forest		NA	Community
Northern wet-mesic forest		NA	Community
Poor fen		NA	Community

Part 9. Stakeholders

At this juncture in the ongoing aquatic plant management planning process, the Town Lakes Committee has represented the South Branch Presque Isle River stakeholders. Additional stakeholders and interested citizens are invited to participate as the plan is refined and updated in order to broaden input, build consensus, and encourage participation in stewardship. No contentious direct plant management actions (for example, harvesting or use of herbicides) are a component of the current plan. The Town Lakes Committee has conducted a township wide lake users’ survey that is presented in the overarching *Wilderness Waters Adaptive Management Plan* (Stine et al., 2019).

³ **END**=Endangered; **THR**=Threatened; **SC**=Special Concern; **SC/P**=fully protected; **SC/N**=no laws regulating use, possession or harvesting; **SC/H**=take regulated by establishment of open/closed seasons; **SC/FL**=federally protected as endangered or threatened, but not so designated by DNR; **SC/M**=fully protected by federal and state laws under Migratory Bird Act.

CHAPTER 5

Recommendations, Actions, and Objectives

In this chapter we provide recommendations for specific objectives and associated actions to support the APM Plan’s goals stated in Chapter 3 and re-stated here for convenient reference:

- (1) Monitor and protect the native aquatic plant community;*
- (2) Prevent establishment of AIS and nuisance levels of native plants;*
- (3) Promote and interpret APM efforts; and*
- (4) Educate riparian owners and river users on preventing AIS introduction, reducing nutrient inputs that potentially alter the plant community, and minimizing physical removal of native riparian and littoral zone plants.*

Since the South Branch Presque Isle River is a healthy and diverse ecosystem, we could simply recommend an alternative of “no action.” In other words, the South Branch Presque Isle River continues without any effort or intervention on part of lake stewards. Nevertheless, we consider the “no action” alternative imprudent. Many forces threaten the quality of the lakes and streams, and Wilderness Waters Program and Town Lakes Committee feels a great responsibility to minimize the threats. We therefore outline in this section a set of actions and related management objectives that will actively engage lake stewards in the process of management.

The actions are presented in tabular form. Each “action” consists of a set of four statements: (1) a declarative “action” statement that specifies the action (2) a statement of the “objective” that the action serves, (3) a “monitoring” statement that specifies the party responsible for carrying out the action and maintaining data, and (4) a “status” statement that suggests a timeline/calendar and indicates status (not yet started, ongoing, or completed). At this time, we recommend no direct manipulation of plant populations in the South Branch Presque Isle River.

Recommended Actions for the South Branch Presque Isle River APM Plan

Action #1: Formally adopt the Aquatic Plant Management Plan.

Objective: To provide foundation for long-term native plant community conservation and stewardship and to be prepared for response to AIS introductions.

Monitoring: The Town Lakes Committee oversees activity and maintains the plan.

Status: Planned for 2020.

Action #2: Monitor water quality.

Objective: Start the collection and analysis of water quality parameters to detect trends in parameters such as nutrients, chlorophyll *a*, and water clarity.

Monitoring: The Town Lakes Committee oversees activity and maintains data.

Status: Ongoing.

Action #3: Monitor the river for aquatic invasive plant species.

Objective: To understand the river's biotic community, provide for early detection of AIS and continue monitoring any existing populations of AIS.

Monitoring: The Town Lakes Committee oversees activity and maintains data.

Status: Ongoing.

Action #4: Monitor the river for aquatic invasive animal species.

Objective: To understand the river's biotic community, provide for early detection of AIS and continue monitoring any existing populations of AIS.

Monitoring: The Town Lakes Committee oversees activity and maintains data.

Status: Ongoing.

Action #5: Form an Aquatic Invasive Species Rapid Response Team and interface with the Town Lakes Committee AIS Rapid Response Coordinator.

Objective: To be prepared for AIS discovery and efficient response.

Monitoring: The Town Lakes Committee coordinates activity.

Status: Planned for 2020.

Recommended Actions for the South Branch Presque Isle River APM Plan

Action #6: Conduct quantitative plant survey every five years using WDNR Point-Intercept Methodology.

Objective: To watch for changes in native species diversity, floristic quality, plant abundance, and plant distribution and to check for the occurrence of non-native, invasive plant species.

Monitoring: Town Lakes Committee (Wilderness Waters Program) oversees and maintains data; copies to WDNR.

Status: Anticipated in 2022.

Action #7: Update the APM plan approximately every five years or as needed to reflect new plant information from plant surveys and monitoring.

Objective: To have current information and management science included in the plan.

Monitoring: The Town Lakes Committee (Wilderness Waters Program) oversees and maintains data; copies to WDNR.

Status: Ongoing.

Action #8: Develop a Citizen Lake Monitoring Network to monitor for invasive species and develop strategies including education and monitoring activities (see <http://www.uwsp.edu/cnr/uwexlakes/clmn> for additional ideas). AIS Bridge Snapshot Day is a suggestion.

Objective: To create a trained volunteer corps to monitor aquatic invasive species and to educate recreational users regarding AIS.

Monitoring: The Town Lakes Committee oversees activity and reports instances of possible introductions of AIS.

Status: Anticipated to begin in 2020.

Action #9: Become familiar with and recognize the water quality and habitat values of ordinances and requirements on boating, septic, and property development.

Objective: To protect native aquatic plants, water quality, and riparian habitat.

Monitoring: Lake residents and other stakeholders.

Status: Ongoing.

Recommended Actions for the South Branch Presque Isle River APM Plan

Action #10: Promote adherence to, and enforcement of, the Town of Presque Isle's 200 foot no-wake ordinances (from shoreline and islands).

Objective: To minimize recreational impacts on the aquatic plant community and shoreline habitats, and promote safe boating.

Monitoring: Town Lakes Committee oversees activity and assesses effectiveness.

Status: Ongoing.

Action #11: Create an education plan for the property owners and other stakeholders that will address issues concerning aquatic and riparian plant communities.

Objective: To educate stakeholders about issues and topics that affect the river's aquatic and riparian plant communities, including topics such as: (1) the importance of the aquatic plant community; (2) no or minimal mechanical removal of plants along the shoreline is desirable and that any plant removal should conform to Wisconsin regulations; (3) the value of a natural shoreline in protecting the aquatic plant community and river health; (4) nutrient sources to the river and the role excess nutrients play in degradation of the aquatic plant community; (5) the importance of reducing or eliminating use of fertilizers on river front property; (6) the importance of minimizing transfer of AIS to the river by having dedicated watercraft and cleaning boats that visit the river.

Monitoring: Town Lakes Committee oversee(s) activity and assesses effectiveness.

Status: Anticipated to begin in 2020.

Action #12: Monitor the river watershed for purple loosestrife.

Objective: Identify purple loosestrife populations before they reach large size.

Monitoring: The Town Lakes Committee oversees activity.

Status: Anticipated in 2020.

Action #13: Maintain the high quality riparian area and shallow water habitat conditions of the South Branch of the Presque Isle River and monitor for any changes over time.

Objective: To maintain and high quality conditions of the riparian and shallow water habitat.

Monitoring: Town Lakes Committee oversees activity and assesses effectiveness.

Status: Anticipated to begin in 2020.

Recommended Actions for the South Branch Presque Isle River APM Plan

Action #14: Consider conditions outlined in the *Shoreland and Shallows Habitat Monitoring Report* and implement protection or rehabilitation initiatives where appropriate.

Objective: To maintain and restore high quality conditions of the riparian and shallow water habitat.

Monitoring: Town Lakes Committee oversees activity and assesses effectiveness.

Status: Anticipated to begin in 2020.

Action #15: For those who want to consider long-term protection of special areas, individual landowners should review information on the Northwoods Land Trust, a local land conservancy that serves northern Wisconsin (northwoodslandtrust.org).

Objective: To conserve family lands (especially lake shorelands) for future generations.

Monitoring: Town Lakes Committee stays apprised of properties within the Township that are participating in conservation of lands with the Northwoods Land Trust.

Status: Ongoing.

Action #16: Identify and highlight high quality areas of littoral zone and riparian areas through review of aquatic plant and shoreland assessment data through various reports and online tools.

Objective: To (1) educate lake users on the value of these areas and the importance of good stewardship to their maintenance, (2) recognize landowners who implement good practices (e.g., large percentage of buffer area intact; three vegetative layers intact – herbaceous, shrubs, trees; areas of high native aquatic plant diversity and abundance), and (3) encourage landowners to implement good practices.

Monitoring: Town Lakes Committee and/or lake association promotes and oversees activity.

Status: Ongoing.

Recommended Actions for the South Branch Presque Isle River APM Plan

Action #17: Lake leaders should encourage and assist landowners to take on lake shore/shallow water improvement projects to rehabilitate areas identified through formal shoreland/shallow water assessments and/or lake user observations (sites might include areas of active erosion, channelized flow, point source pollution, imperious surfaces, and lawns) *Vilas County Land and Water Conservation* looks for partners in this endeavor and can provide planning and sponsorship of projects.

Objective: To rehabilitate specific areas of shoreland to improve natural functions and values.

Monitoring: Lake groups and lake leaders monitor and report progress to Town Lakes Committee.

Status: Ongoing.

Action #18: As part of an education program, encourage commitment from property owners to adopt practices that maintain/improve health of shoreland areas. In many cases, these are “practices” that mean less or no work (e.g., now mowing, no weed wacking, no leaf blowing, no removing large woody material).

Objective: To engage landowners in simple practices that improve/maintain health of the lake and shoreland.

Monitoring: Each landowner can monitor changes in the shoreland over time by simple means (e.g., annual mid-summer photographs or a catalog of plants and animals seen over time).

Status: Anticipated to begin in 2020.

CHAPTER 6

Contingency Plan for AIS

Unfortunately, sources of aquatic invasive plants and other AIS are numerous in Wisconsin. Some infested water bodies are quite close to Presque Isle Township. There is an increasing likelihood of accidental introduction of AIS to Presque Isle Township Lakes through conveyance of life stages by boats, trailers, and other vectors. It is important for the Town Lakes Committee and other lake stewards to be prepared for the contingency of aquatic invasive plant species colonization in a Presque Isle Township water body.

For riparian owners and users of a lake ecosystem, the discovery of AIS is a tragedy that elicits an immediate desire to “fix the problem.” Although strong emotions may be evoked by such a discovery, a deliberate and systematic approach is required to appropriately and effectively address the situation. An aquatic plant management plan (one including a contingency plan for AIS) is the best tool by which the process can be navigated. In fact the APM plan is a requirement in Wisconsin for some kinds of aquatic plant management actions. One of the actions outlined in the previous chapter was to establish an Aquatic Invasive Species Rapid Response Team. This team and its coordinator are integral to the management process. It is important for this team to be multi-dimensional (or at least have quick access to the expertise that may be required). AIS invade not just a single body of water, but an entire region since the new infestation is an outpost from which the AIS can more easily colonize other nearby water bodies. For this reason it is strategic for the Rapid Response Team to include representation from regional stakeholders.

Exhibit 9 provides a flowchart outlining an appropriate rapid response to the suspected discovery of an aquatic invasive plant species. The response will be most efficient if an AIS Rapid Response Team has already been established and is familiar with the contingency plan. In the remainder of this chapter we further describe the approach.

When a suspect aquatic invasive plant species is found, either the original observer or a member of the Rapid Response Team (likely the coordinator) should collect an entire plant specimen including roots, stems, and flowers (if present). The sample should be placed in a sealable bag with a small amount of water to keep it moist. Place a label in the bag written in pencil with date, time, collector’s name, lake/river/creek name, location, town, and county.

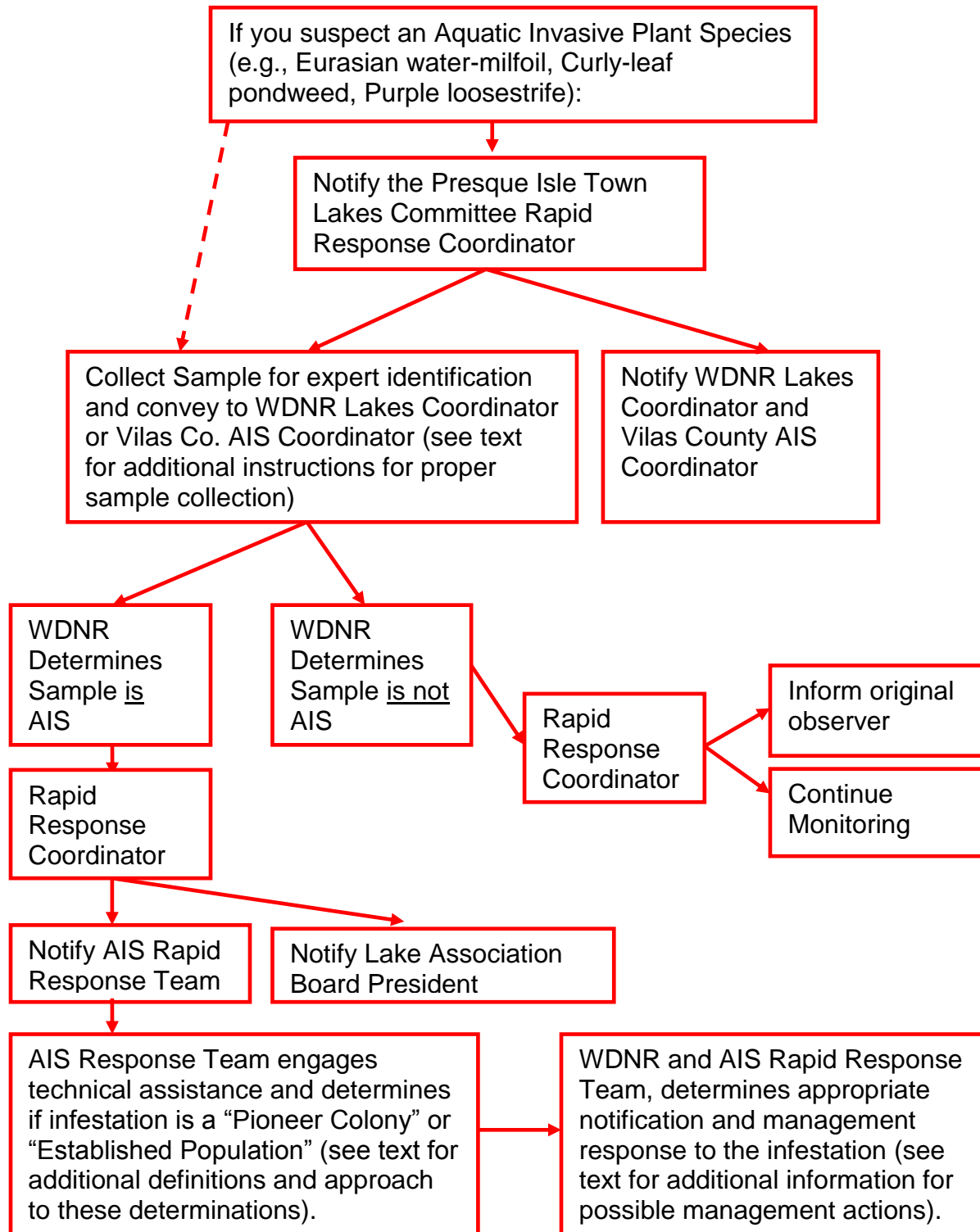
Attach a map to the bag that has the location of the suspect AIS marked and GPS coordinates recorded (if GPS is available). The sample should be placed on ice in a cooler or in a refrigerator. Deliver the sample to the WDNR Water Resource Management Specialist (Kevin Gauthier in Woodruff) or the Vilas County AIS Coordinator (Al Wirt) as soon as possible (at least within three days). The WDNR or their botanical expert(s) will determine the species and confirm whether or not it is an aquatic invasive plant species.

If the suspect specimen is determined to be an invasive plant species, the next step is to determine the extent and density of the population since the management response will vary accordingly. The Rapid Response Team should conduct (or have its consultant conduct) a survey to define the colony's perimeter and estimate density. If less than five acres (or <5% of the water surface area), it is designated a "Pioneer Colony." If greater than five acres (or >5% of the water surface area) then it is designated an "Established Population." Once the infestation is characterized, "at risk" areas should also be determined and marked on a map. For example, nearby boat landing sites and areas of high boat traffic should be indicated.

When "pioneer" or "established" status has been determined, it is time to consult with the WDNR Lakes Coordinator to determine appropriate notifications and management responses to the infestation. Determining whether hand-pulling or chemical treatment will be used is an important and early decision. Necessary notifications of landowners, governmental officials, and recreationists (at boat landings) will be determined. Whether the population's perimeter needs to be marked with buoys will be decided by the WDNR. Funding sources will be identified and consultants and contractors will be contacted where necessary. The WDNR will determine if a further baseline plant survey is required (depending on type of treatment). A post treatment monitoring plan will be discussed and established to determine the efficacy of the selected treatment.

Once the Rapid Response Team is organized, one of its first tasks is to develop a list of contacts and associated contact information (phone numbers and email addresses). At a minimum, this contact list should include: the Rapid Response Coordinator, members of the Rapid Response Team, County AIS Coordinator, WDNR Lakes Management Coordinator, Lake Association Presidents (or other points of contact), local WDNR warden, local government official(s), other experts, chemical treatment contractors, and consultant(s).

Exhibit 9. Aquatic Invasive Plant Species Rapid Response





Appendix A
Literature Cited

LITERATURE CITED

- Black, J.J., M. A. Lloyd & C.W. Threinen. 1963. *Surface water resources of Vilas County*. Wis. Cons. Dept. Madison, WI.
- Hauxwell, J., S. Knight, K. Wagner, A. Mikulyuk, M. Nault, M. Porzky and S. Chase. 2010. *Recommended baseline monitoring of aquatic plants in Wisconsin: sampling design, field and laboratory procedures, data entry and analysis, and applications*. Wisconsin Department of Natural Resources Bureau of Science Services, PUB-SS-1068 2010. Madison, WI.
- Natural Heritage Inventory. 2013. *Elements by TownRange for Vilas County*. Retrieved 2014. <http://dnr.wi.gov/topic/NHI/documents/Vilas_County.pdf>
- Nichols, Stanley A. 1999. Floristic Quality Assessment of Wisconsin Lake Plant Communities with Example Applications. *Journal of Lake and Reservoir Management* 15(2): 133-141.
- Stine, Angie, Caitlin Hoenig, Dean Premo, and Kent Premo. 2019. *Presque Isle Wilderness Waters Adaptive Management Plan*. White Water Associates, Inc. Amasa, MI.
- US Department of Agriculture, Natural Resources Conservation Service. June 1986. *Urban Hydrology for Small Watersheds*. Technical Release-55.
- Walters, C. 1986. Objectives, constraints, and problem bounding. In W.M. Getz, ed., *Adaptive Management of Renewable Resources*. Macmillan Publishing Company. New York. p. 13+.
- Wisconsin Department of Natural Resources. 2012a. *About Designated Waters*. Retrieved 2013. <<http://dnrmaps.wi.gov/imf/imf.jsp?site=SurfaceWaterViewer.deswaters>>
- Wisconsin Department of Natural Resources. 2012b. *Invasive Rule – NR 40 Terminology*. Retrieved 2013. < <http://dnr.wi.gov/topic/Invasives/terminology.html>>
- Wisconsin Department of Natural Resources. May 27, 2016. *Draft Lake Shoreland & Shallows Habitat Monitoring Field Protocol*. Wisconsin Department of Natural Resources.

Appendix B

Aquatic Plant Survey Tables and Figures

Table of Contents

Table 1. Summary statistics for point-intercept aquatic plant survey.

Table 2. Plant species and distribution statistics 2017.

Table 3. Plant species and distribution statistics 2010.

Figure 1. Number of plant species recorded at sample sites.

Figure 2. Rake fullness ratings for sample sites.

Figure 3. Maximum depth of plant colonization.

Figure 4. Sampling sites less than or equal to maximum depth of rooted vegetation.

Figure 5. Substrate encountered at point-intercept plant sampling sites.

Figure 6. Aquatic plant occurrences for 2017 point-intercept survey data.

Figure 7. Sampling sites with emergent and floating aquatic plants.

Figure 8-15. Distribution of plant species.

Table 1. Summary statistics for the 2010 and 2017 point-intercept aquatic plant surveys for South Branch Presque Isle River.

Summary Statistic	Value 2010	Value 2017	Notes
Total number of sites on grid	110	110	Total number of sites on the original grid (not necessarily visited)
Total number of sites visited	104	105	Total number of sites where the boat stopped, even if much too deep to have plants.
Total number of sites with vegetation	86	74	Total number of sites where at least one plant was found
Total number of sites shallower than maximum depth of plants	103	105	Number of sites where depth was less than or equal to the maximum depth where plants were found. This value is used for Frequency of occurrence at sites shallower than maximum depth of plants.
Frequency of occurrence at sites shallower than maximum depth of plants	83.50	70.48	Number of times a species was seen divided by the total number of sites shallower than maximum depth of plants.
Simpson Diversity Index	0.94	0.89	A nonparametric estimator of community heterogeneity. It is based on Relative Frequency and thus is not sensitive to whether all sampled sites (including non-vegetated sites) are included. The closer the Simpson Diversity Index is to 1, the more diverse the community.
Maximum depth of plants (ft.)	6.00	6.00	The depth of the deepest site sampled at which vegetation was present.
Number of sites sampled with rake on rope	0	0	
Number of sites sampled with rake on pole	102	105	
Average number of all species per site (shallower than max depth)	2.10	1.50	
Average number of all species per site (vegetated sites only)	2.51	2.12	
Average number of native species per site (shallower than max depth)	2.10	1.50	Total number of species collected. Does not include visual sightings.
Average number of native species per site (vegetated sites only)	2.51	2.12	Total number of species collected including visual sightings.
Species Richness	26	25	
Species Richness (including visuals)	34	40	
Floristic Quality Index (FQI)	32.0	31.0	

Table 2. Plant species recorded and distribution statistics for the 2017 South Branch Presque Isle River aquatic plant survey.

Common name	Scientific name	Frequency of occurrence at sites less than or equal to maximum depth of plants	Frequency of occurrence within vegetated areas (%)	Relative Frequency (%)	Number of sites where species found	Number of sites where species found (including visuals)	Average Rake Fullness
Floating-leaf bur-reed	<i>Sparganium fluctuans</i>	41.90	59.46	28.03	44	75	1.30
Flat-stem pondweed	<i>Potamogeton zosteriformis</i>	11.43	16.22	7.64	12	33	1.08
Spatterdock	<i>Nuphar variegata</i>	10.48	14.86	7.01	11	40	1.09
White water lily	<i>Nymphaea odorata</i>	8.57	12.16	5.73	9	35	1.00
Clasping-leaf pondweed	<i>Potamogeton richardsonii</i>	7.62	10.81	5.10	8	22	1.25
Wild celery	<i>Vallisneria americana</i>	7.62	10.81	5.10	8	20	1.00
Water marigold	<i>Bidens beckii</i> (formerly <i>Megalodonta</i>)	6.67	9.46	4.46	7	10	1.00
Coontail	<i>Ceratophyllum demersum</i>	6.67	9.46	4.46	7	9	1.14
Common waterweed	<i>Elodea canadensis</i>	5.71	8.11	3.82	6	11	1.17
Slender naiad	<i>Najas flexilis</i>	4.76	6.76	3.18	5	5	1.00
Floating-leaf pondweed	<i>Potamogeton natans</i>	4.76	6.76	3.18	5	10	1.00
Common bur-reed	<i>Sparganium eurycarpum</i>	4.76	6.76	3.18	5	45	1.00
Muskgrasses	<i>Chara sp.</i>	3.81	5.41	2.55	4	5	1.00
Nitella	<i>Nitella sp.</i>	3.81	5.41	2.55	4	4	1.00
Alpine pondweed	<i>Potamogeton alpinus</i>	2.86	4.05	1.91	3	11	1.00
Small pondweed	<i>Potamogeton pusillus</i>	2.86	4.05	1.91	3	4	1.00
Arrowhead	<i>Sagittaria sp.</i>	2.86	4.05	1.91	3	10	1.00
Common bladderwort	<i>Utricularia vulgaris</i>	2.86	4.05	1.91	3	9	1.00
Water star-grass	<i>Heteranthera dubia</i>	1.90	2.70	1.27	2	3	1.00
Northern water-milfoil	<i>Myriophyllum sibiricum</i>	1.90	2.70	1.27	2	5	1.00
Large-leaf pondweed	<i>Potamogeton amplifolius</i>	1.90	2.70	1.27	2	5	1.00
Pickerelweed	<i>Pontederia cordata</i>	0.95	1.35	0.64	1	37	1.00
Berchtold's pondweed	<i>Potamogeton berchtoldii</i>	0.95	1.35	0.64	1	1	1.00
Fries' pondweed	<i>Potamogeton friesii</i>	0.95	1.35	0.64	1	3	1.00

Frequency of occurrence within vegetated areas (%): Number of times a species was seen in a vegetated area divided by the total number of vegetated sites.

Table 2. Continued

Common name	Scientific name	Frequency of occurrence at sites less than or equal to maximum depth of plants	Frequency of occurrence within vegetated areas (%)	Relative Frequency (%)	Number of sites where species found	Number of sites where species found (including visuals)	Average Rake Fullness
Softstem bulrush	<i>Schoenoplectus tabernaemontani</i>	0.95	1.35	0.64	1	6	1.00
Watershield	<i>Brasenia schreberi</i>				Visual	2	
<i>Carex pseudocyperus</i>	<i>Carex pseudocyperus</i>				Visual	26	
Reed canary grass	<i>Phalaris arundinacea</i>				Visual	8	
Water horsetail	<i>Equisetum fluviatile</i>				Visual	4	
Large duckweed	<i>Spirodela polyrhiza</i>				Visual	4	
Creeping spikerush	<i>Eleocharis palustris</i>				Visual	3	
Small duckweed	<i>Lemna minor</i>				Visual	2	
Ribbon-leaf pondweed	<i>Potamogeton epihydrus</i>				Visual	2	
Fern pondweed	<i>Potamogeton robbinsii</i>				Visual	2	
Broad-leaved cattail	<i>Typha latifolia</i>				Visual	2	
Marsh cinquefoil	<i>Comarum palustre</i>				Visual	1	
Three-way sedge	<i>Dulichium arundinaceum</i>				Visual	1	
Northern blue flag	<i>Iris versicolor</i>				Visual	1	
Spiral-fruited pondweed	<i>Potamogeton spirillus</i>				Visual	1	
Scripus cyperinus	<i>Scripus cyperinus</i>				Visual	1	

Frequency of occurrence within vegetated areas (%): Number of times a species was seen in a vegetated area divided by the total number of vegetated sites.

Phalaris arundinacea is considered a restricted invasive species.

Plant specimens were verified by Dr. Robert Freckmann, University of Wisconsin-Stevens Point, on 3/14/2018.

Table 3. Plant species recorded and distribution statistics for the 2010 South Branch Presque Isle River aquatic plant survey.

Common name	Scientific name	Frequency of occurrence at sites less than or equal to maximum depth of plants	Frequency of occurrence within vegetated areas (%)	Relative Frequency (%)	Number of sites where species found	Number of sites where species found (including visuals)	Average Rake Fullness
Coontail	<i>Ceratophyllum demersum</i>	18.45	22.09	8.80	19	20	1.42
White water lily	<i>Nymphaea odorata</i>	18.45	22.09	8.80	19	74	1.00
Common bladderwort	<i>Utricularia vulgaris</i>	18.45	22.09	8.80	19	29	1.11
Spatterdock	<i>Nuphar variegata</i>	16.50	19.77	7.87	17	72	1.00
Common waterweed	<i>Elodea canadensis</i>	14.56	17.44	6.94	15	16	1.00
Narrow-leaved bur-reed	<i>Sparganium angustifolium</i>	14.56	17.44	6.94	15	81	1.00
Slender naiad	<i>Najas flexilis</i>	13.59	16.28	6.48	14	14	1.00
Clasping-leaf pondweed	<i>Potamogeton richardsonii</i>	13.59	16.28	6.48	14	15	1.21
Wild celery	<i>Vallisneria americana</i>	12.62	15.12	6.02	13	13	1.15
Water star-grass	<i>Heteranthera dubia</i>	9.71	11.63	4.63	10	11	1.00
Flat-stem pondweed	<i>Potamogeton zosteriformis</i>	8.74	10.47	4.17	9	14	1.56
Nitella	<i>Nitella</i> sp.	7.77	9.30	3.70	8	9	1.00
Arum-leaved arrowhead	<i>Sagittaria cuneata</i>	6.80	8.14	3.24	7	12	1.00
Fern pondweed	<i>Potamogeton robbinsii</i>	5.83	6.98	2.78	6	6	1.33
Alpine pondweed	<i>Potamogeton alpinus</i>	4.85	5.81	2.31	5	6	1.00
Small pondweed	<i>Potamogeton pusillus</i>	4.85	5.81	2.31	5	6	1.00
Floating-leaf pondweed	<i>Potamogeton natans</i>	3.88	4.65	1.85	4	13	1.00
Small duckweed	<i>Lemna minor</i>	2.91	3.49	1.39	3	5	1.00
Ribbon-leaf pondweed	<i>Potamogeton epihydrus</i>	2.91	3.49	1.39	3	7	1.00
Water marigold	<i>Bidens beckii</i> (formerly <i>Megalodonta</i>)	1.94	2.33	0.93	2	4	1.00
Watershield	<i>Brasenia schreberi</i>	1.94	2.33	0.93	2	6	1.00
Muskgrasses	<i>Chara</i> sp.	1.94	2.33	0.93	2	2	1.00
Fries' pondweed	<i>Potamogeton friesii</i>	1.94	2.33	0.93	2	2	1.00
Leafy pondweed	<i>Potamogeton foliosus</i>	0.97	1.16	0.46	1	1	1.00

Frequency of occurrence within vegetated areas (%): Number of times a species was seen in a vegetated area divided by the total number of vegetated sites.

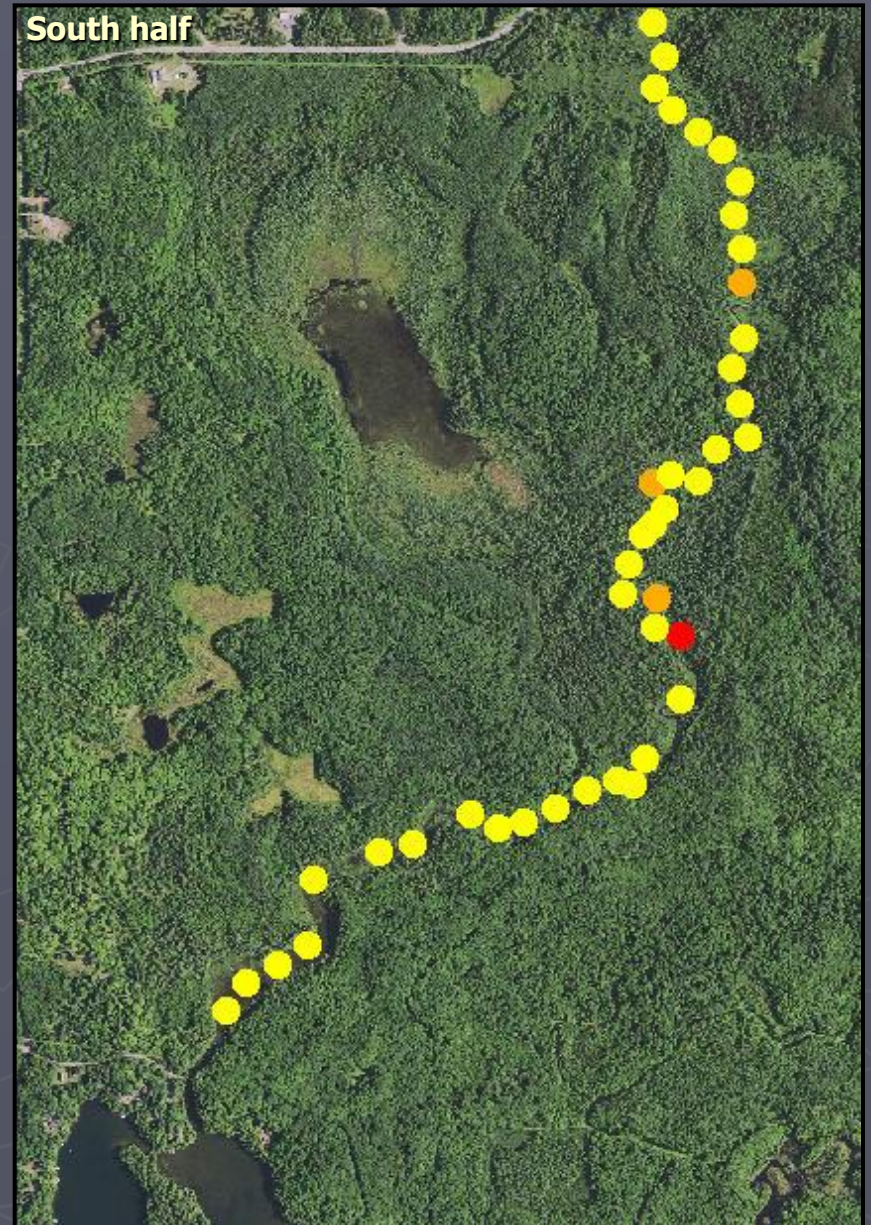
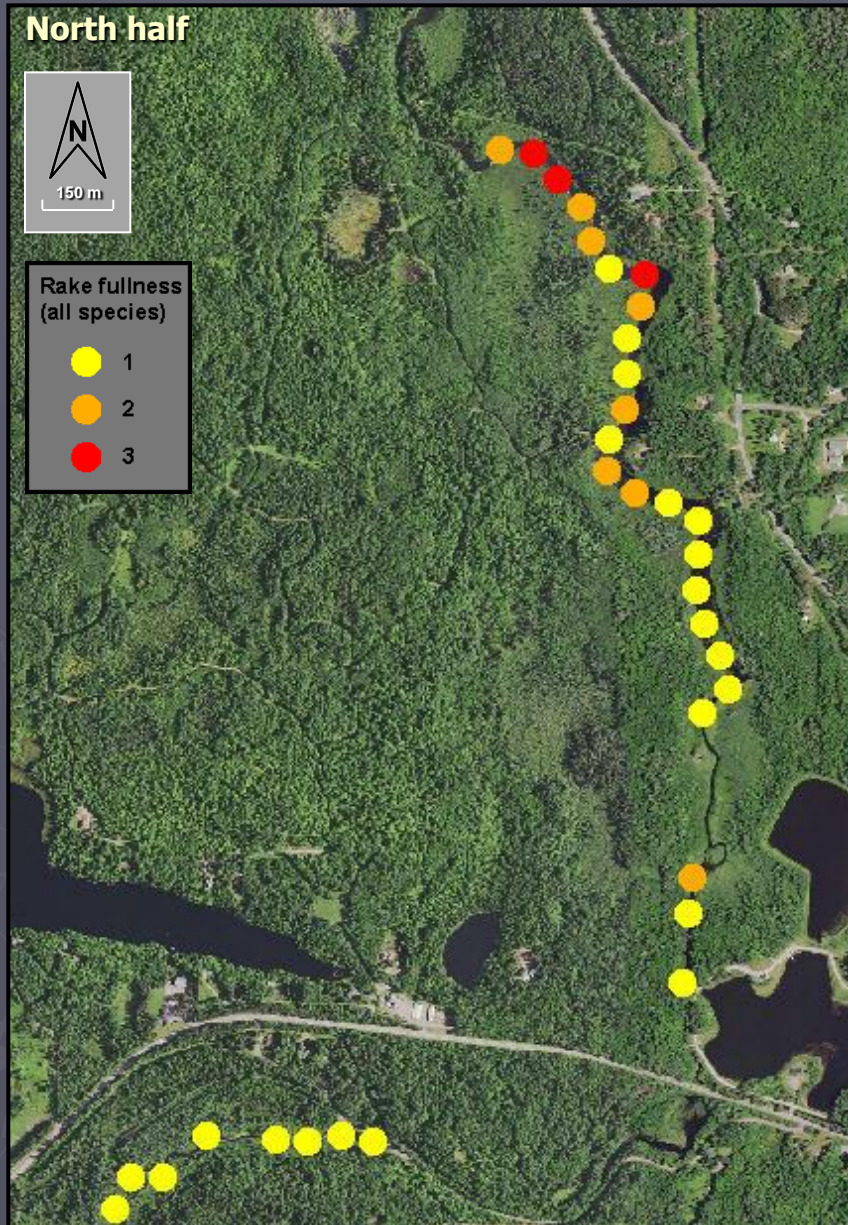
Table 3. Continued

Common name	Scientific name	Frequency of occurrence at sites less than or equal to maximum depth of plants	Frequency of occurrence within vegetated areas (%)	Relative Frequency (%)	Number of sites where species found	Number of sites where species found (including visuals)	Average Rake Fullness
Variable pondweed	<i>Potamogeton gramineus</i>	0.97	1.16	0.46	1	2	1.00
Sago pondweed	<i>Stuckenia pectinata</i>	0.97	1.16	0.46	1	2	1.00
Pickerelweed	<i>Pontederia cordata</i>				Visual	54	
Cattail	<i>Typha</i> sp.				Visual	13	
Reed canary grass	<i>Phalaris arundinacea</i>				Visual	8	
Wild calla	<i>Calla palustris</i>				Visual	7	
Hardstem bulrush	<i>Schoenoplectus acutus</i>				Visual	6	
Large-leaf pondweed	<i>Potamogeton amplifolius</i>				Visual	3	
Wild Rice	<i>Zizania</i> sp.				Visual	2	
Northern water-milfoil	<i>Myriophyllum sibiricum</i>				Visual	1	
Cyperus sedge	<i>Carex pseudocyperus</i>				Boat Survey		
Broadleaf arrowhead	<i>Sagittaria latifolia</i>				Boat Survey		

Frequency of occurrence within vegetated areas (%): Number of times a species was seen in a vegetated area divided by the total number of vegetated sites.

Phalaris arundinacea is considered a restricted invasive species.

Figure 2. Rake fullness ratings for South Branch Presque Isle River sample sites (2017).



**Figure 3. Maximum Depth of Plant Colonization
in South Branch Presque Isle River 2017**

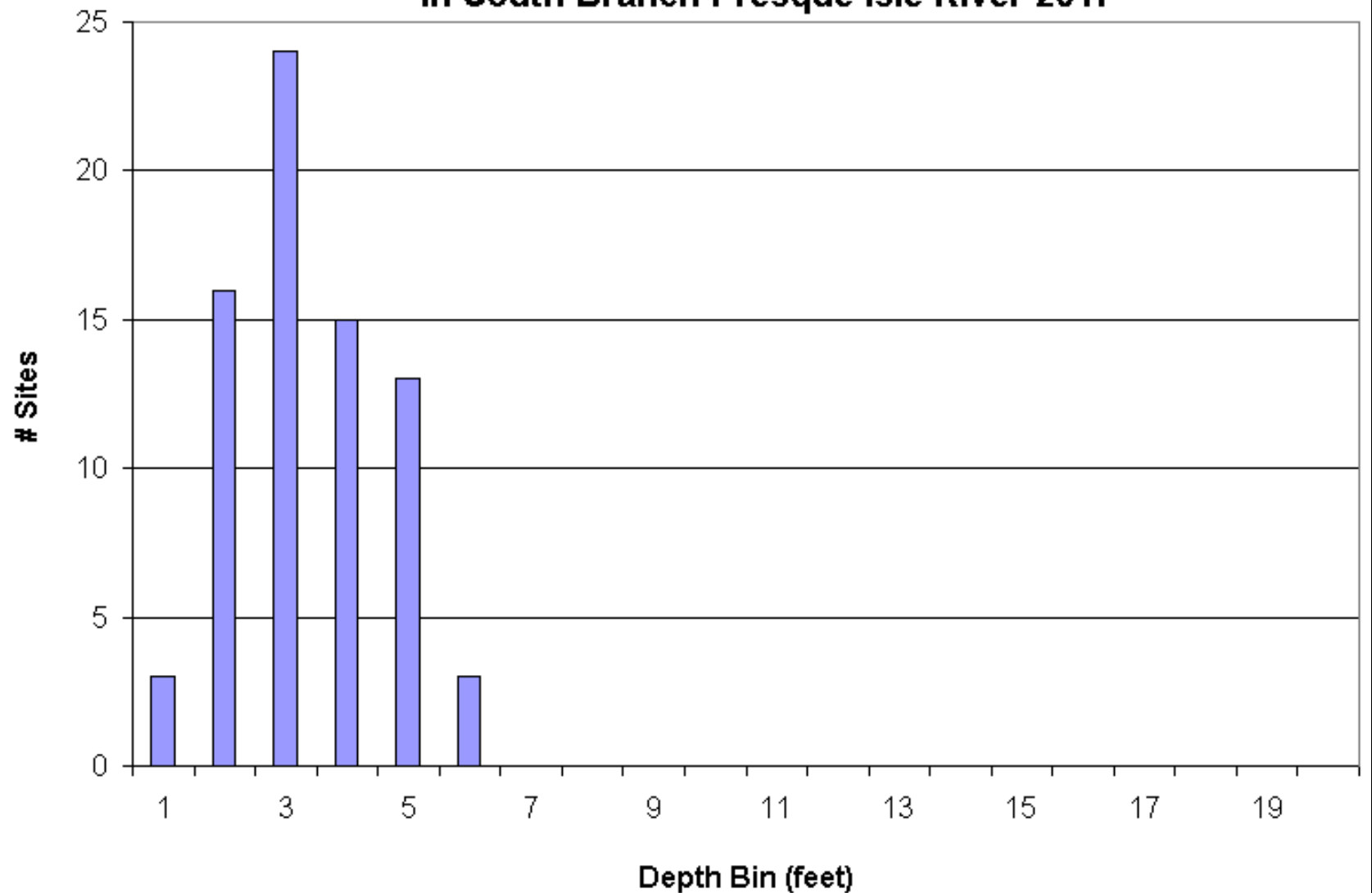


Figure 4. South Branch Presque Isle River sampling sites less than or equal to maximum depth of rooted vegetation (2017).

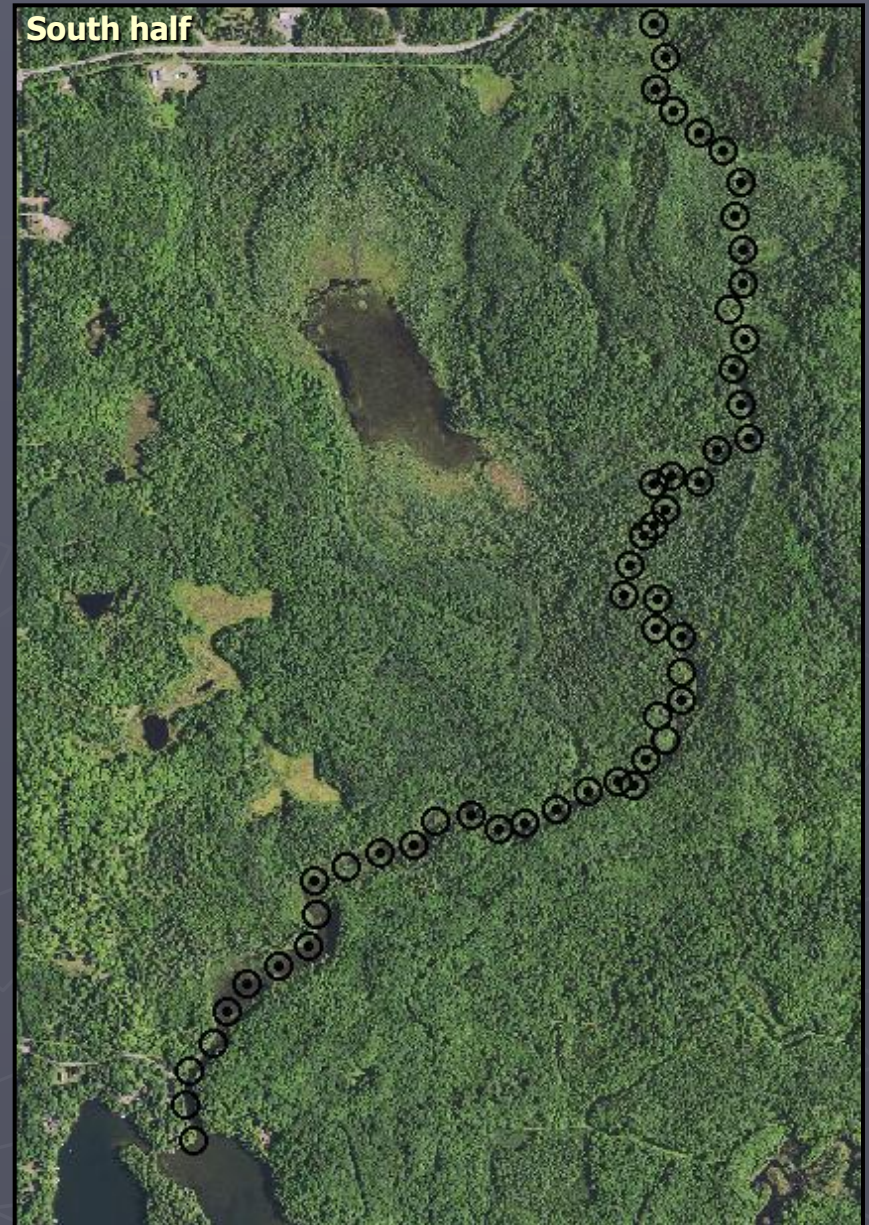


Figure 5. South Branch Presque Isle River substrate encountered at point-intercept plant sampling sites (2017).

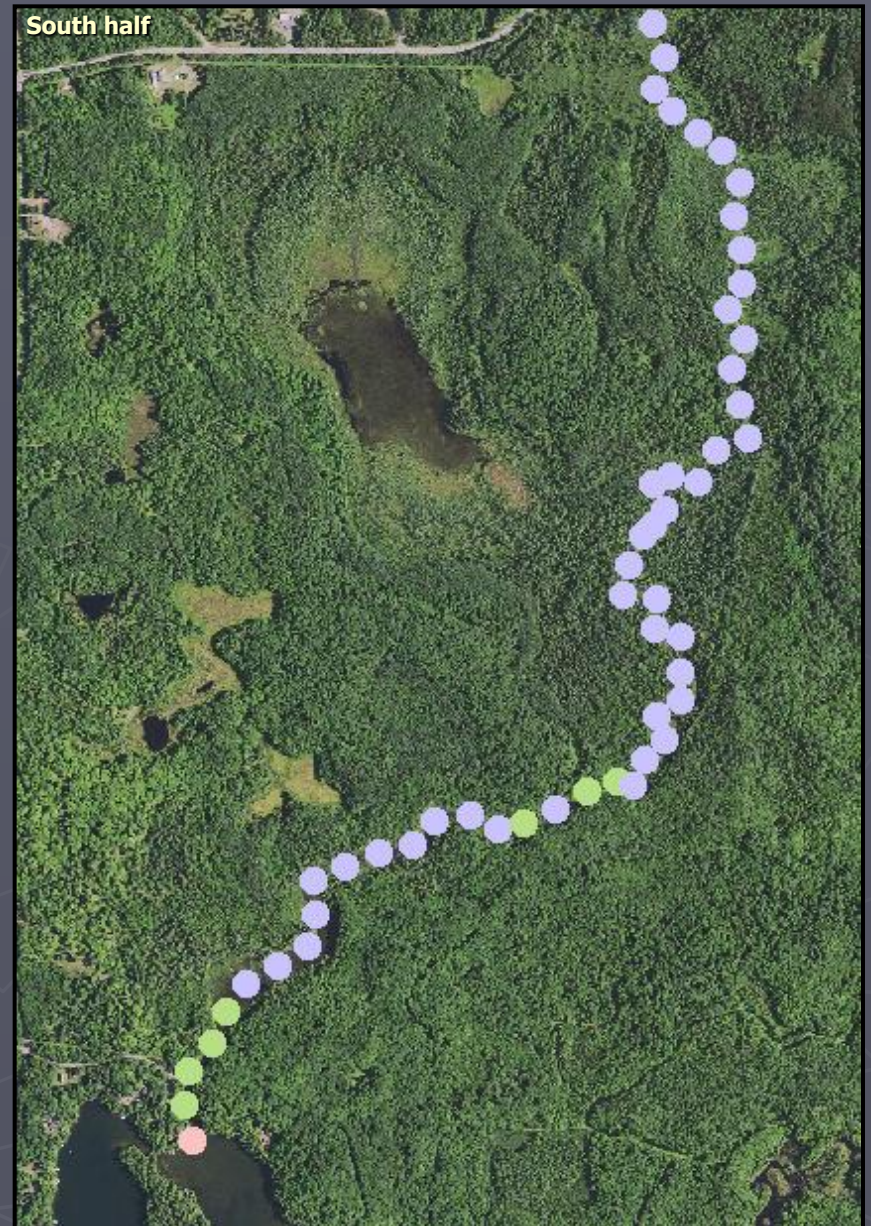


Figure 6. South Branch Presque Isle River aquatic plant occurrences for 2017 point-intercept survey data.

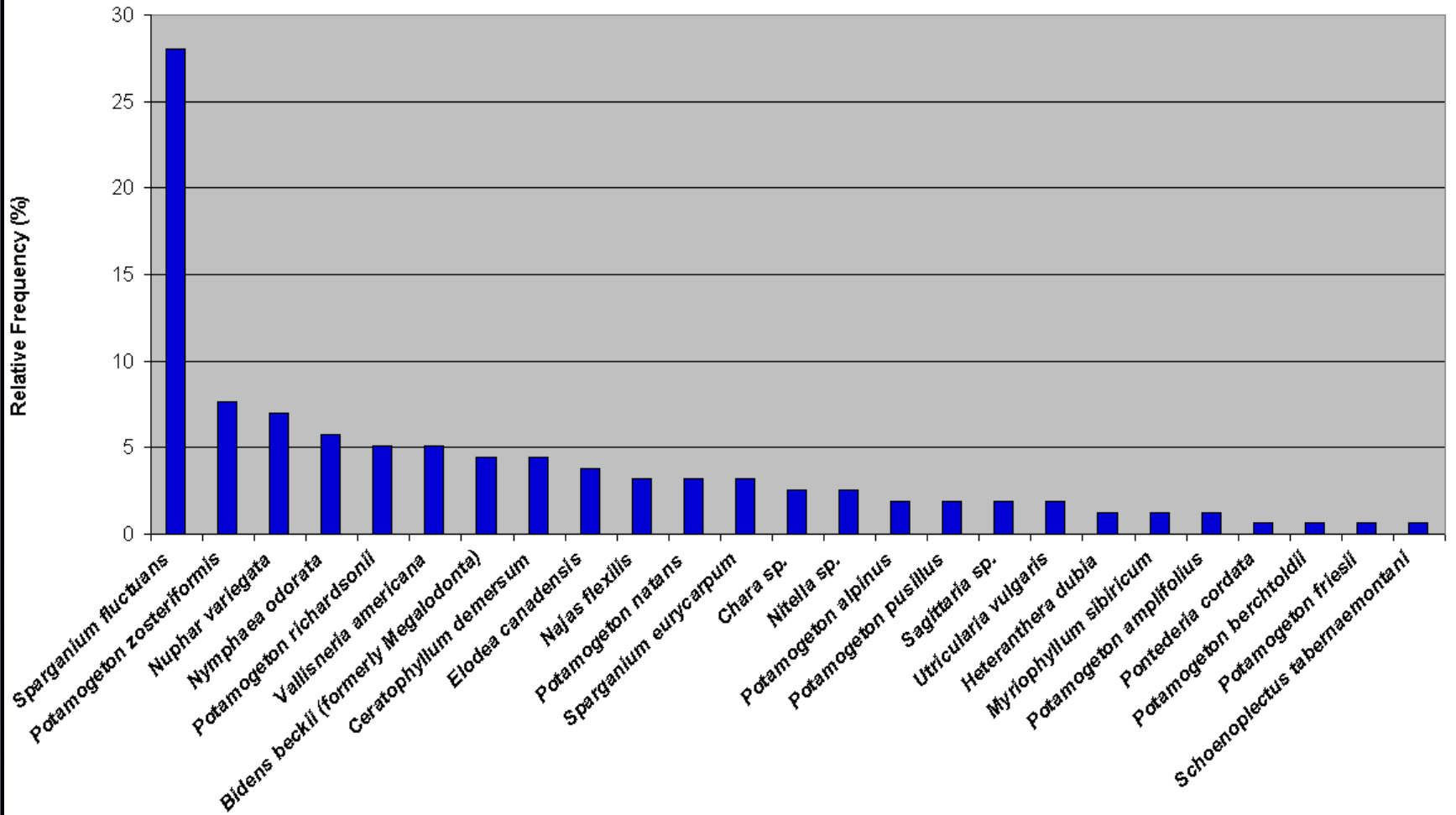


Figure 7. South Branch Presque Isle River point-intercept plant sampling sites with emergent and floating aquatic plants (2017).



Figure 8. Distribution of plant species,
South Branch Presque Isle River (2017).

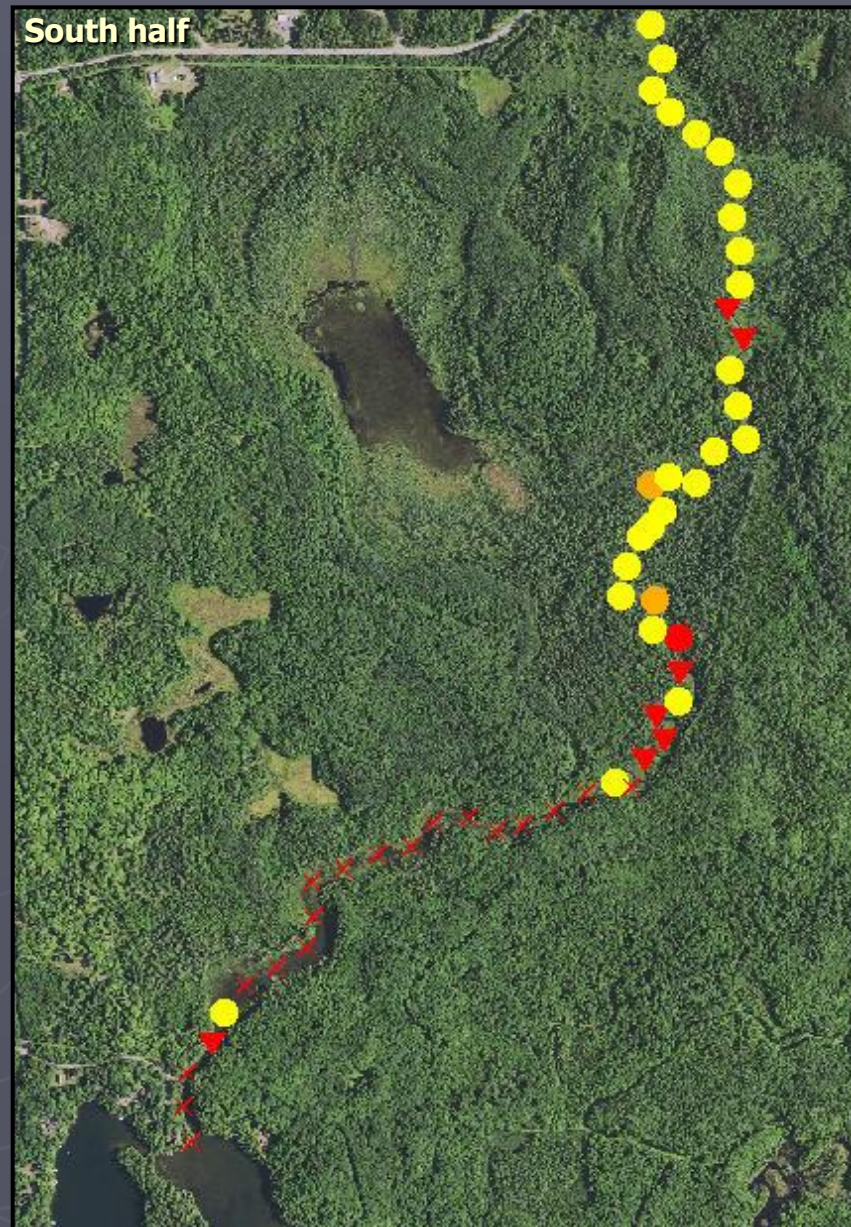
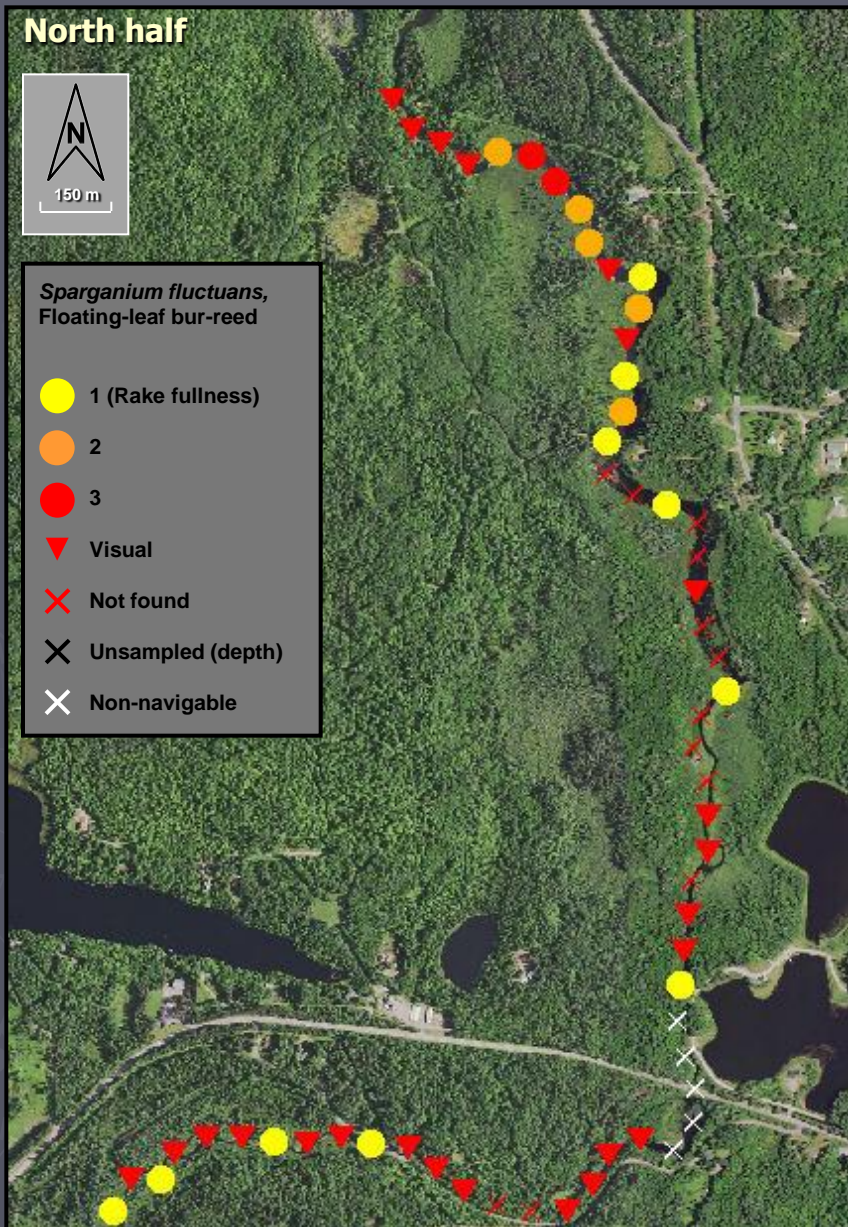


Figure 9. Distribution of plant species,
South Branch Presque Isle River (2017).

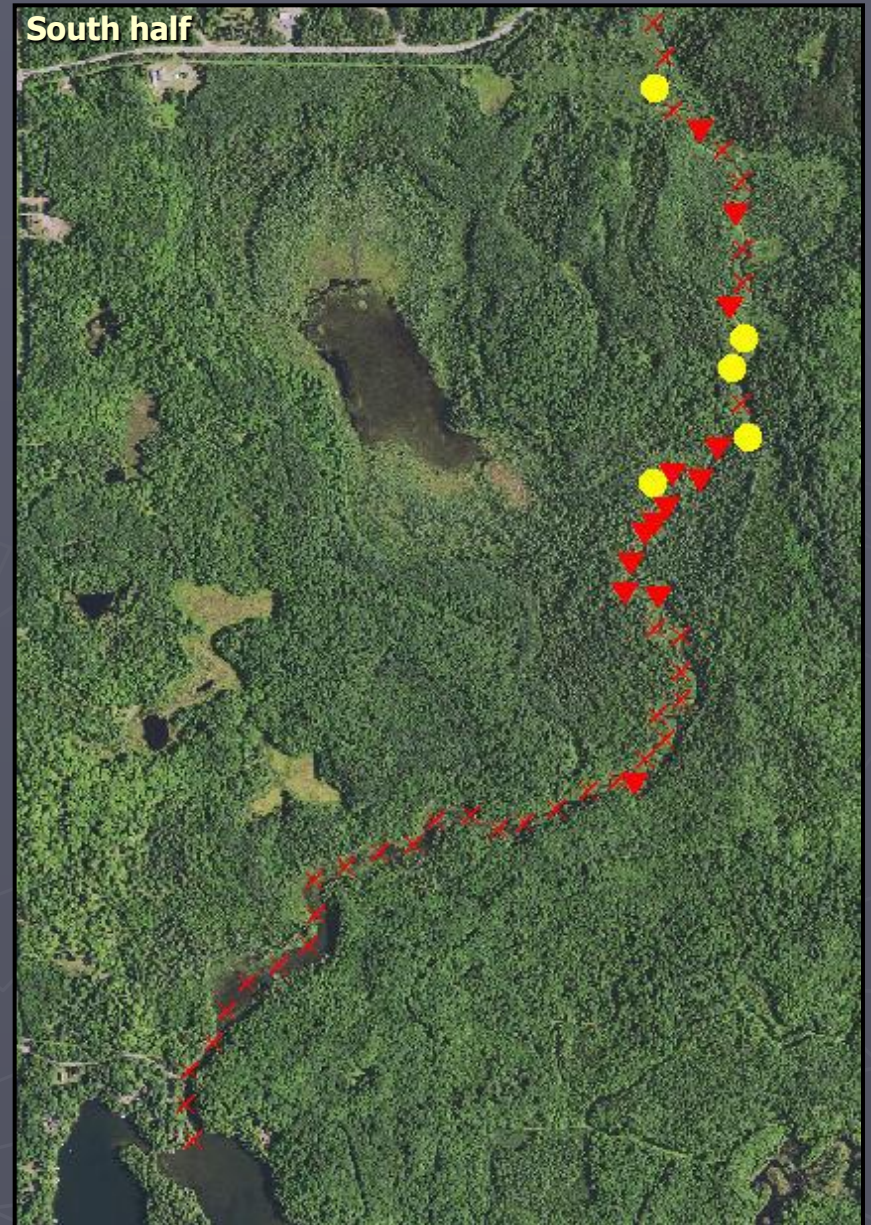
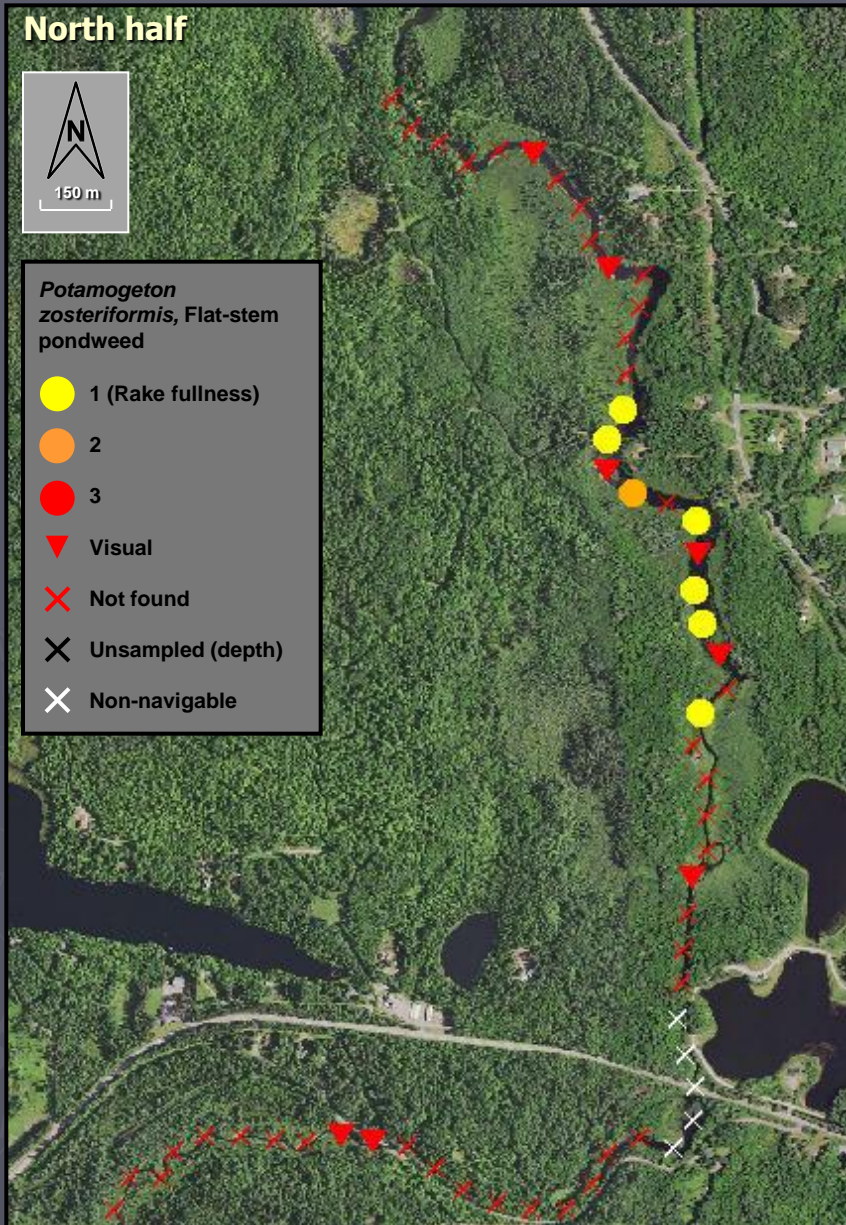


Figure 10. Distribution of plant species,
South Branch Presque Isle River (2017).

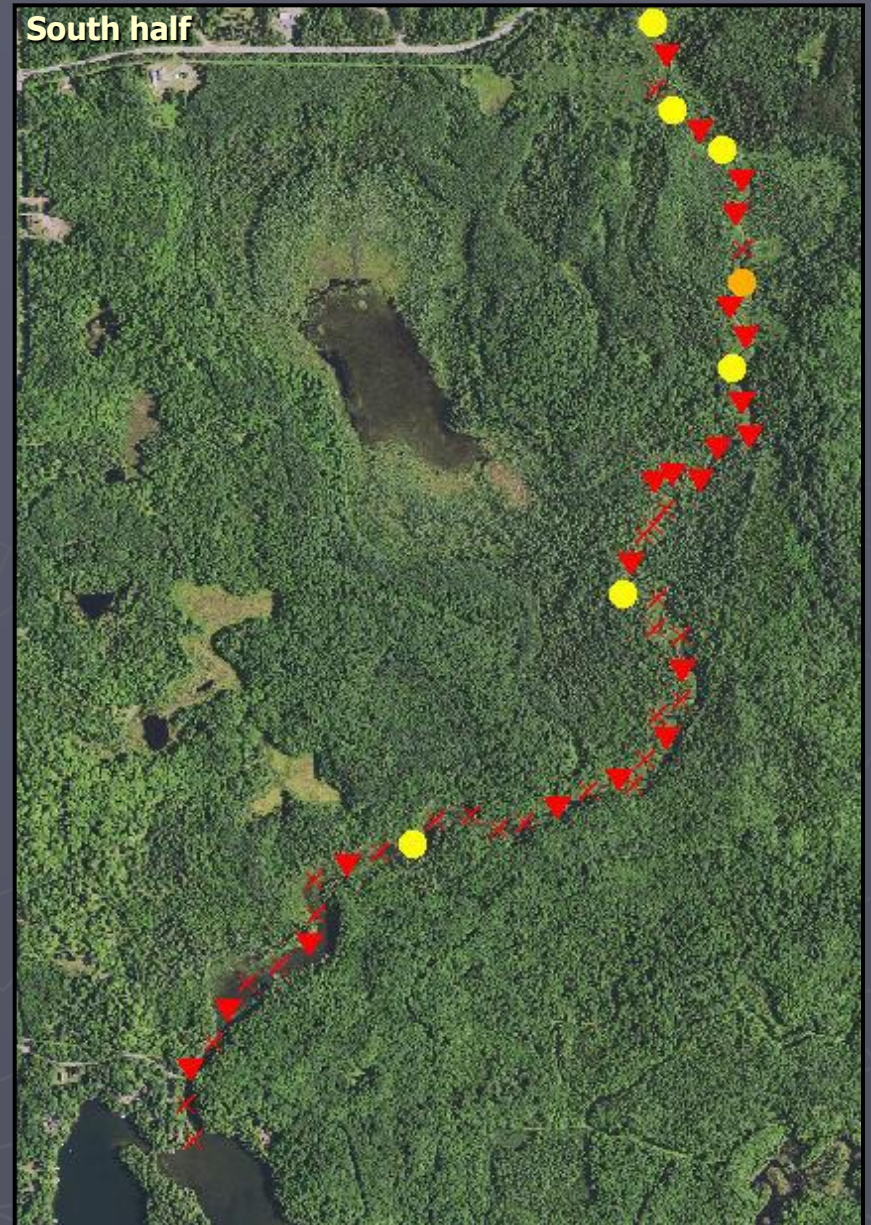
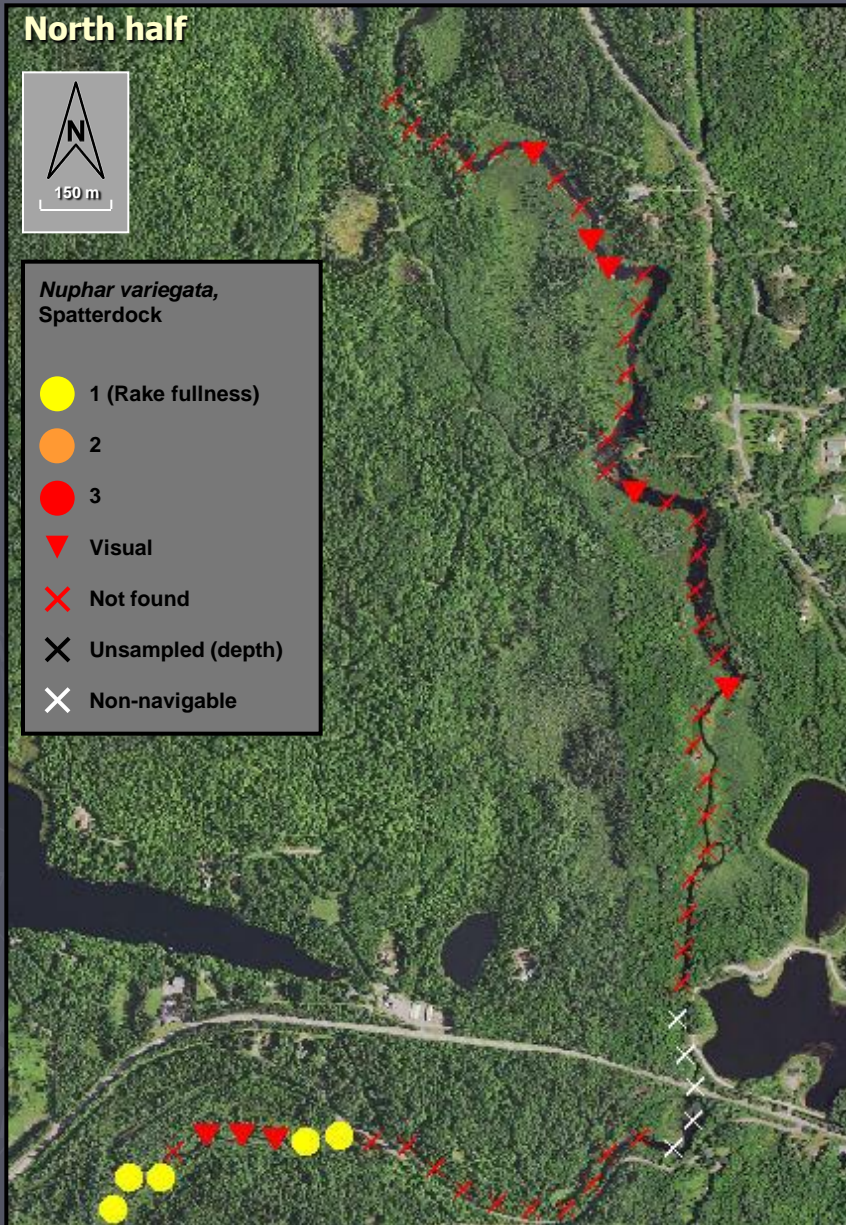


Figure 11. Distribution of plant species,
South Branch Presque Isle River (2017).

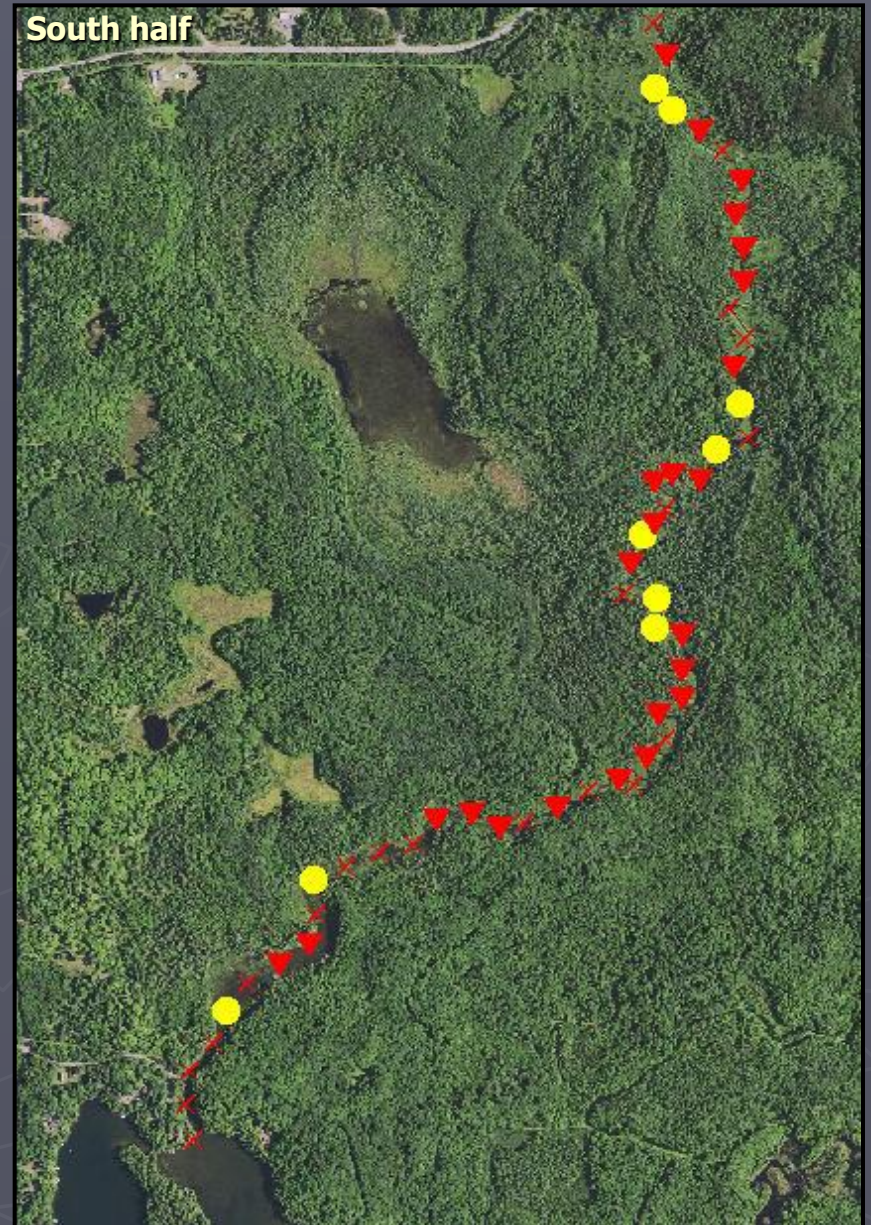
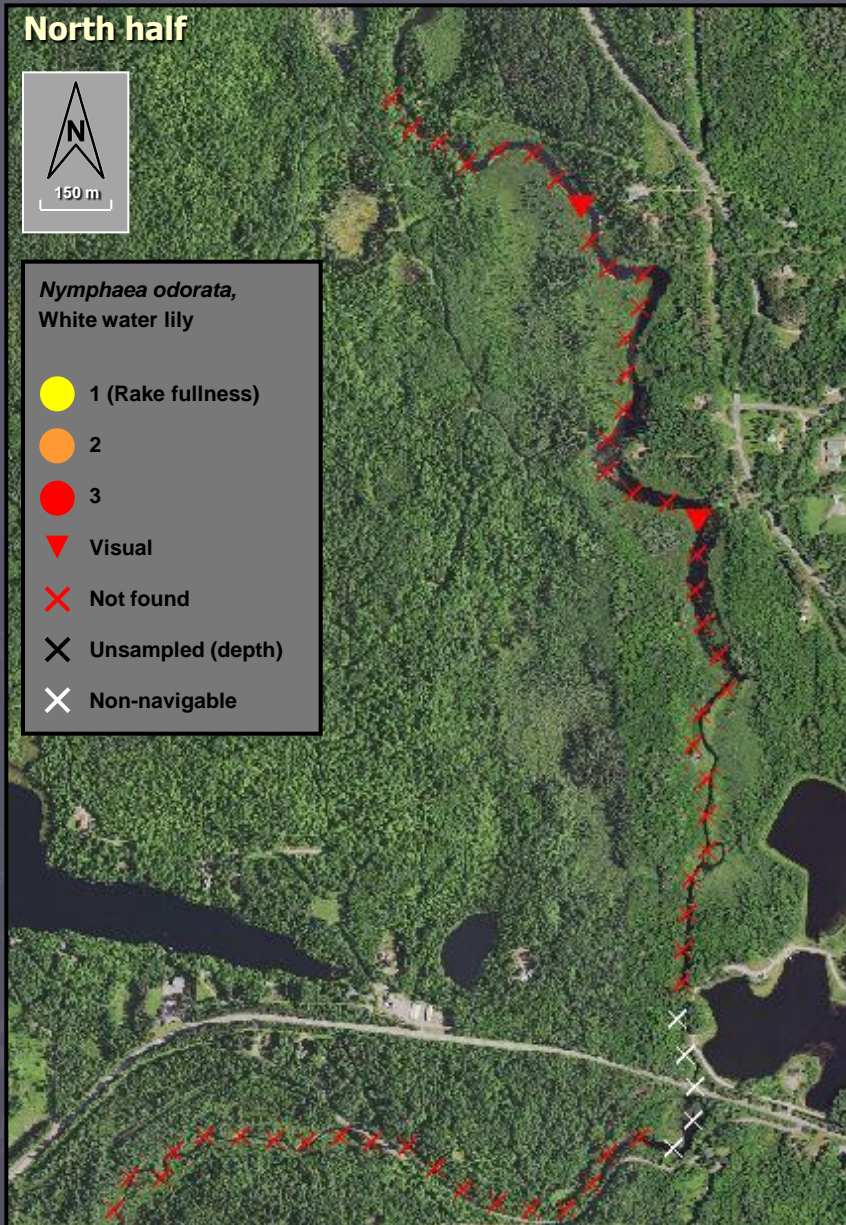


Figure 12. Distribution of plant species, South Branch Presque Isle River (2017).

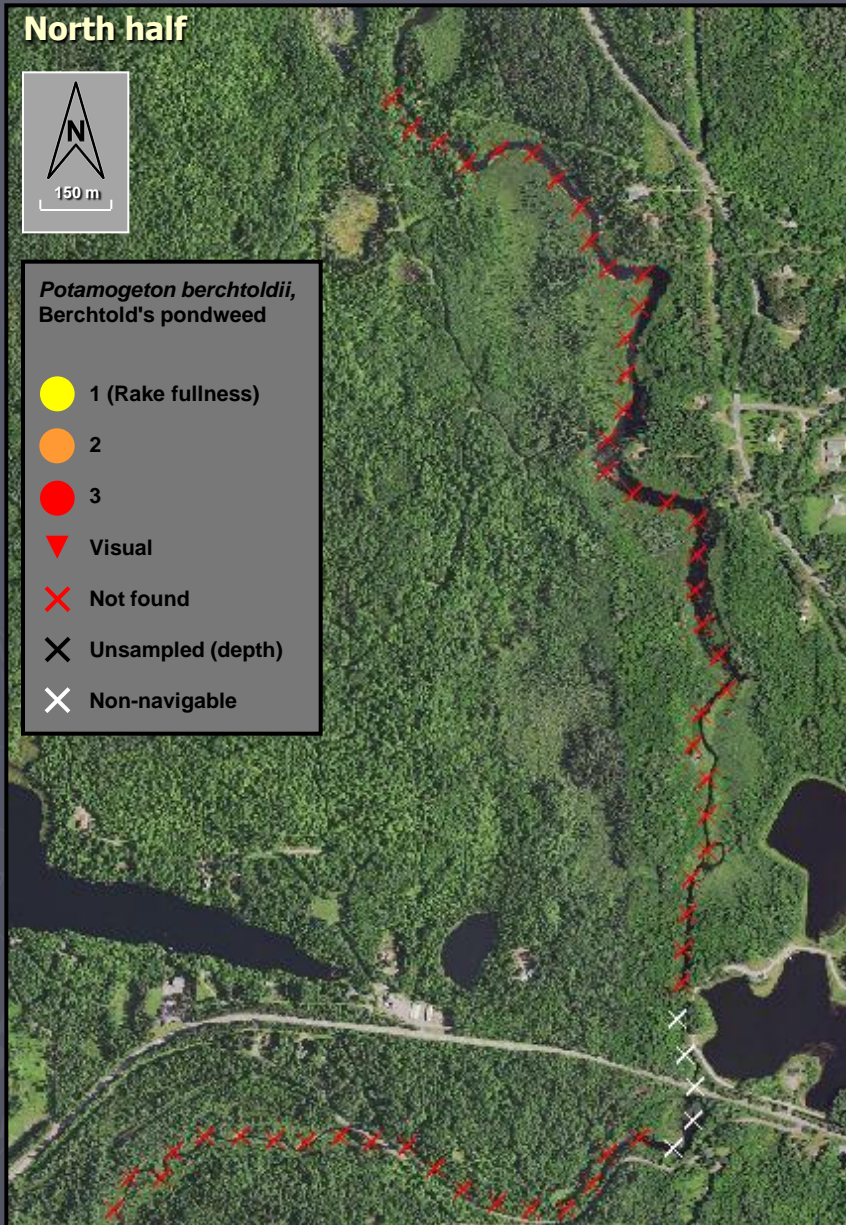


Figure 13. Distribution of plant species,
South Branch Presque Isle River (2017).

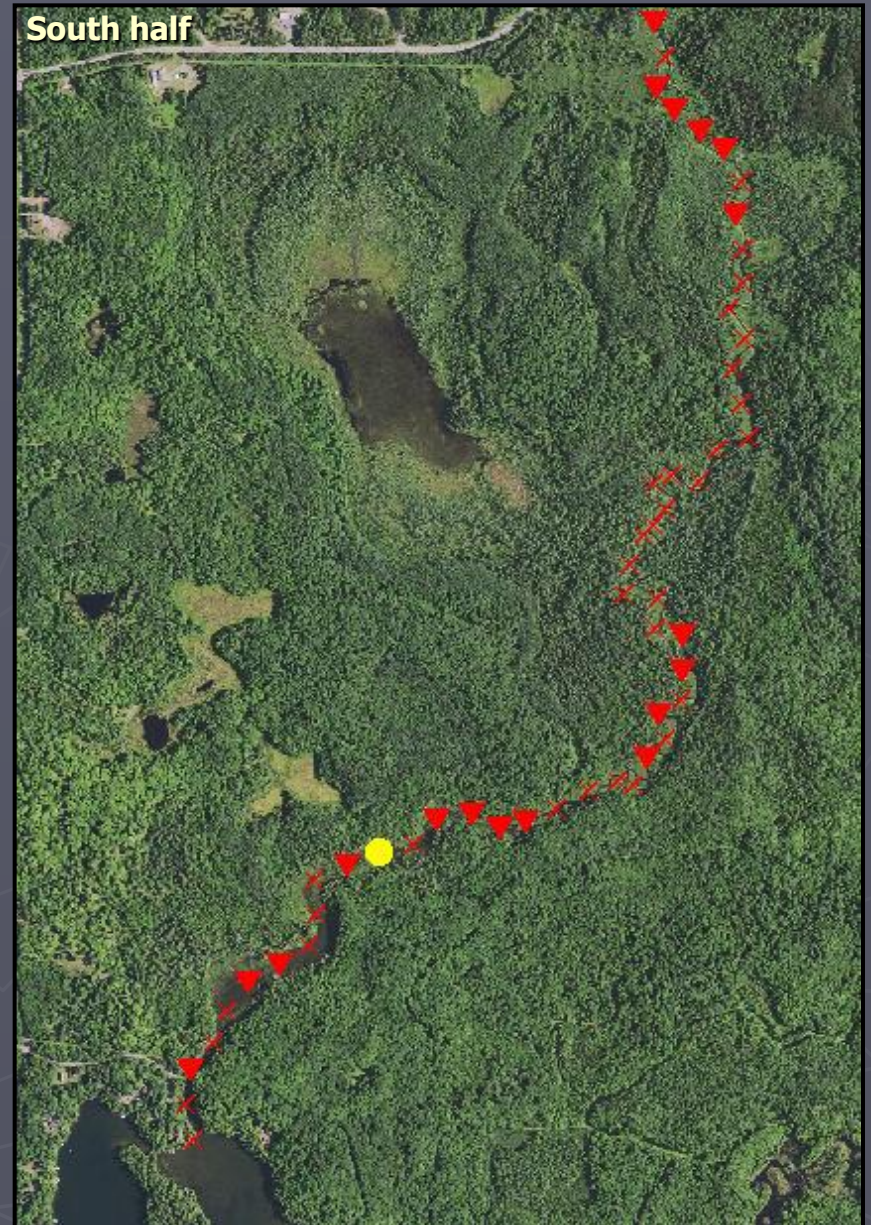
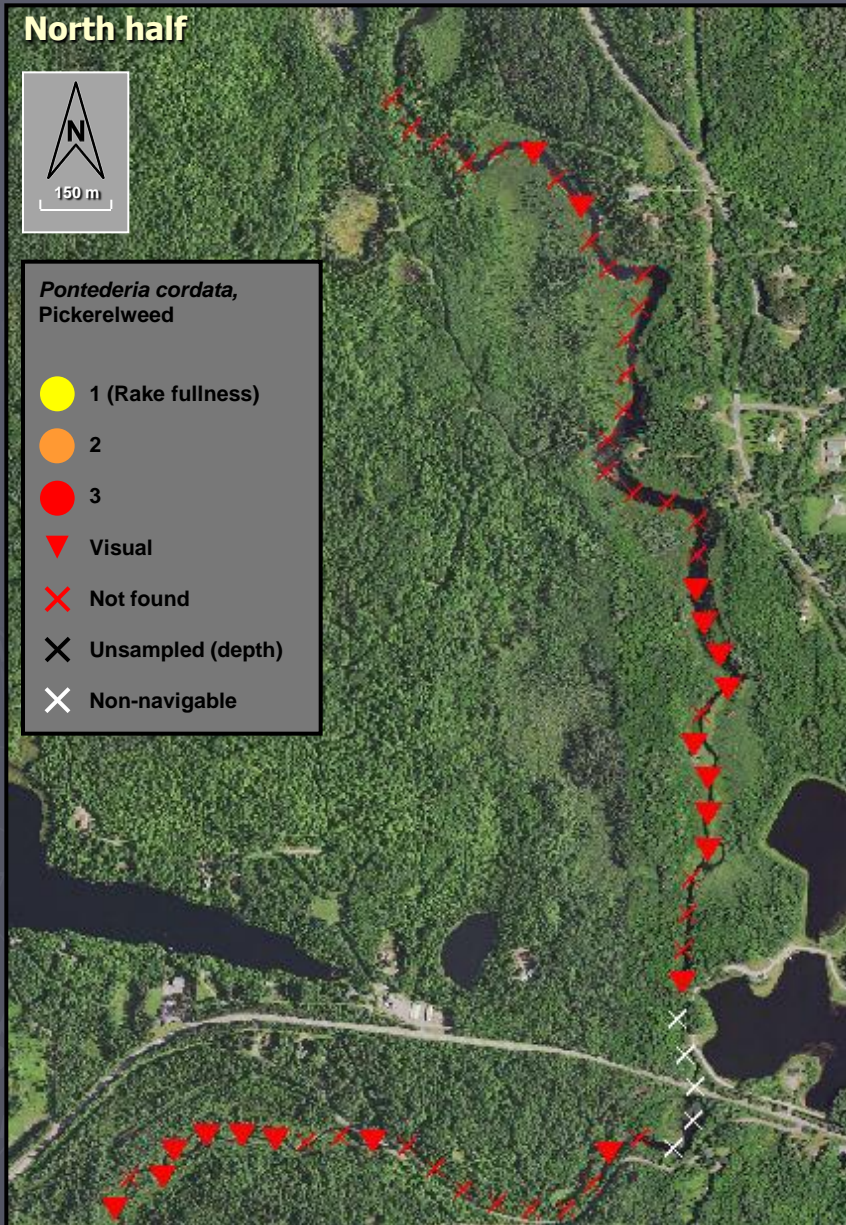


Figure 14. Distribution of plant species,
South Branch Presque Isle River (2017).

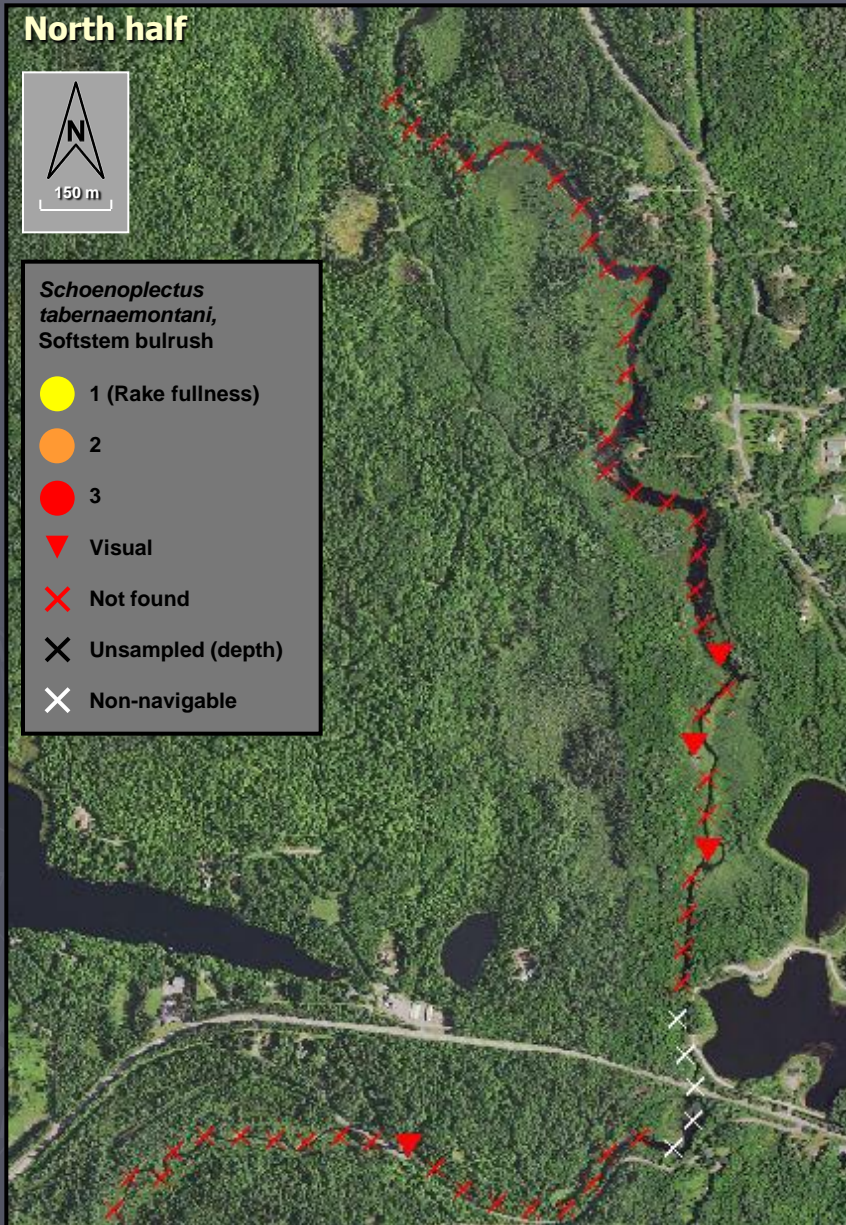
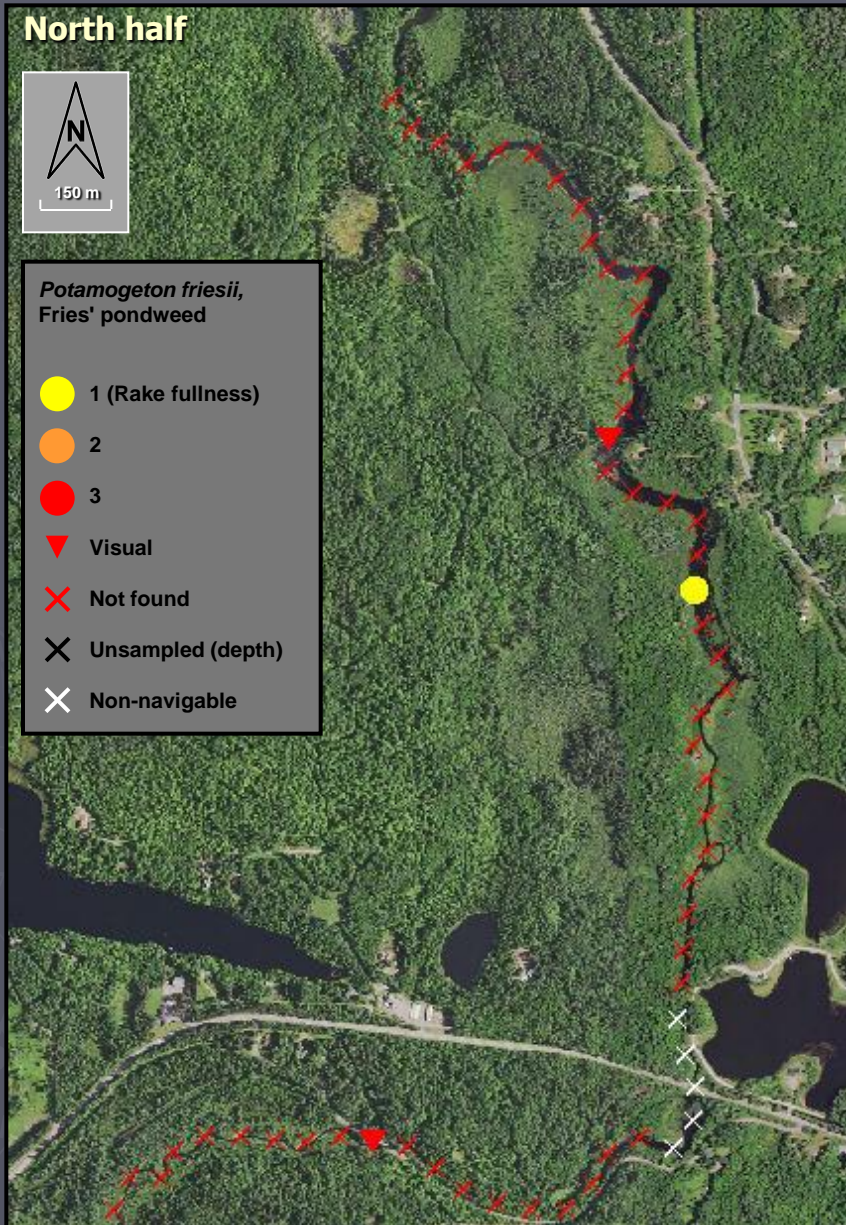
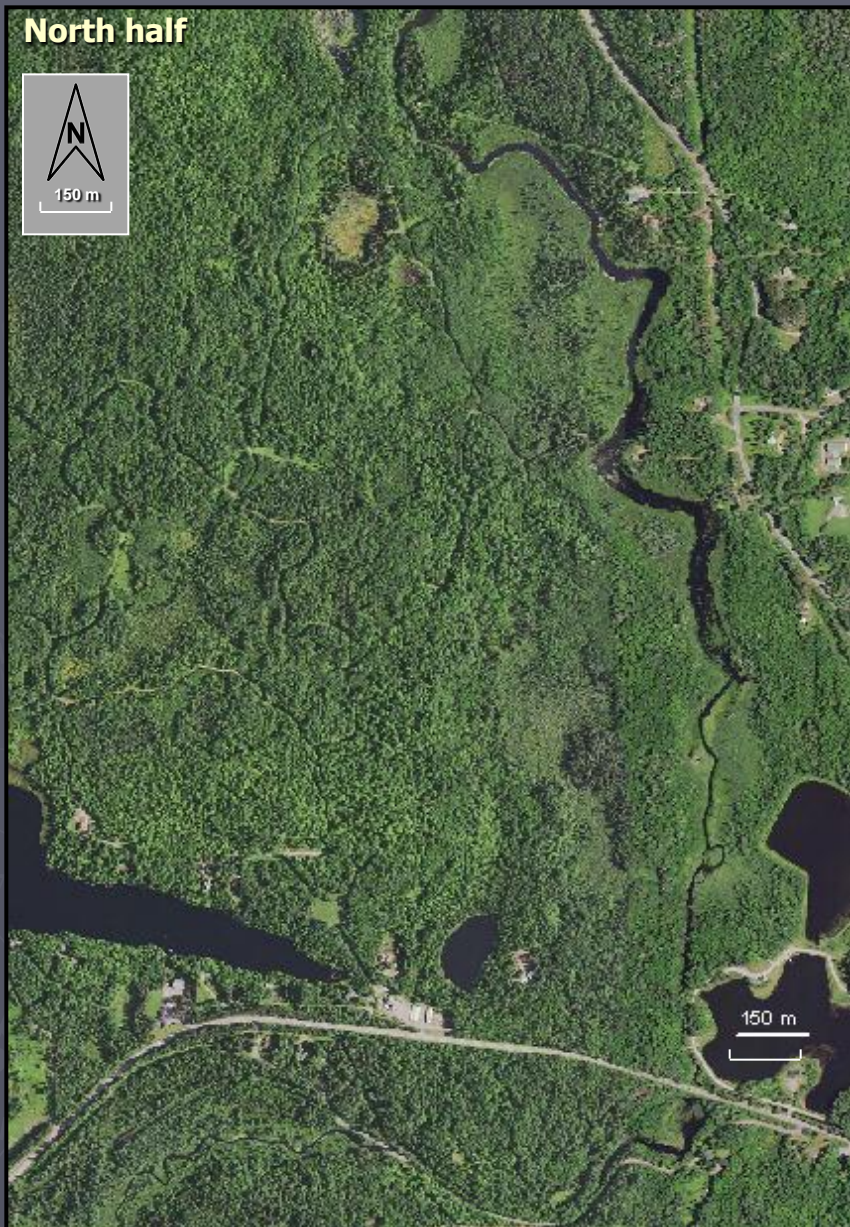


Figure 15. Distribution of plant species,
South Branch Presque Isle River (2017).



Scale for South Branch Presque Isle River sample sites (2017)





Appendix C
Review of South Branch of the Presque Isle Lake Water
Quality

Appendix C

Review of Lake Water Quality

Table of Contents

Introduction	1
Temperature	1
Dissolved Oxygen	1
Water Clarity	1
Turbidity	2
Water Color	2
Water Level	2
User Perception	2
Chlorophyll <i>a</i>	2
Phosphorus	3
Trophic State	3
Nitrogen	3
Biological Oxygen Demand	3
Chloride	4
Sulfate	4
Conductivity	4
pH	4
Alkalinity	5
Hardness	5
Calcium and Magnesium Hardness	5
Sodium and Potassium	6
Dissolved Organic Carbon	6
Silica	6
Aluminum	6
Iron	6
Manganese	7
Sediment	7
Total Suspended Solids	7
Aquatic Invasive Species	7
Resources	8

Review of South Branch Presque Isle River Water Quality

Prepared by Angie Stine, B.S., and Caitlin Clarke, B.S., White Water Associates, Inc.

Introduction

Presque Isle River is 4.7 miles long and the average width is 25 feet. For the purpose of this review, water quality data was collected in 1963 (Black), and from the DNR SWIMS database, collected on July 25, 1989 by the Citizen Lake Monitoring Network (CLMN). On August 17, 2010, White Water Associates collected a water sample.

Temperature

Measuring the temperature of a river at different depths will determine the influence it has on the physical, biological, and chemical aspects of the river. Temperature influences the rate of decomposition, nutrient recycling, lake stratification, and dissolved oxygen (D.O.) concentration. Temperature can also affect the distribution of fish species throughout a lake. Because temperature is not known for South Branch Presque Isle River, future water sampling should include measurement of this parameter.

Dissolved Oxygen

The dissolved oxygen content of river water is vital in determining presence of fish species and other aquatic organisms. Dissolved oxygen also has a strong influence on the chemical and physical conditions of a waterbody. The amount of dissolved oxygen is dependent on the water temperature, atmospheric pressure, and biological activity. Oxygen levels are increased by aquatic plant photosynthesis, but reduced by respiration of plants, decomposer organisms, fish, and invertebrates. The amount of dissolved oxygen available in a waterbody, particularly in the deeper parts, is critical to overall health. Presque Isle River had a D.O. level of 7.8 mg/L on July 25, 1989 which is a normal level for most fish and macroinvertebrates.

Water Clarity

Water clarity has two main components: turbidity (suspended materials such as algae and silt) and true color (materials dissolved in the water) (Shaw et al., 2004). Water clarity gives an indication of the overall water quality in a waterbody. Water clarity is typically measured using a Secchi disk (black and white disk) that is lowered into the water column on a tether. In simple terms, the depth at which the disk is no longer visible is recorded as the Secchi depth. Secchi depth values were not collected for the River, so future water sampling should include measurement of this parameter.

Turbidity

Turbidity is another measure of water clarity, but is caused by suspended particulate matter rather than dissolved organic compounds (Shaw et al., 2004). Particles suspended in the water dissipate light and reduce the depth at which the light can penetrate. This affects the depth at which plants can grow. Turbidity also affects the aesthetic quality of water. Water that runs off the watershed into a river can increase turbidity by introducing suspended materials. Turbidity caused by algae is the most common reason for low Secchi readings (Shaw et al., 2004). In terms of biological health of a water ecosystem, measurements less than 10 Nephelometric Turbidity Units (NTU) represent healthy conditions for fish and other organisms. Because turbidity is not known for South Branch Presque Isle River, future water sampling should include measurement of this parameter.

Water Color

Color of water is related to the type and amount of dissolved organic chemicals. Its main significance is aesthetics, although it may also influence light penetration and in turn affect aquatic plant and algal growth. Many waterbodies have naturally occurring color compounds from decomposition of plant material in the watershed (Shaw et al., 2004). Units of color are determined from the platinum-cobalt scale and are therefore recorded as Pt-Co units. Shaw states that a water color between 0 and 40 Pt-Co units is low. Water color was never recorded for South Branch Presque Isle River, so future water sampling should include measurement of this parameter.

Water Level

When CLMN volunteers collect Secchi depth readings, they also record their perceptions of the water level as “high,” “normal,” or “low.” Water level data was not collected for South Branch Presque Isle River.

User Perception

When Secchi depth readings are collected, the CLMN record their perceptions of the water, based on the physical appearance and the recreational suitability. These perceptions can be compared to water quality parameters to see how the user would experience the water at that time. When interpreting the transparency data, we see that when the Secchi depth decreases, the rating of the water’s physical appearance also decreases. These perceptions were never recorded for the River and future sampling should include this data.

Chlorophyll *a*

Chlorophyll *a* is the photosynthetic pigment that makes plants and algae green. Chlorophyll *a* in river water is therefore an indicator of the amount of algae. Chlorophyll *a* concentrations greater than 10 µg/L are perceived as a mild algae bloom, while concentrations greater than 20 µg/L are perceived as a nuisance. Because chlorophyll *a* is not known for South Branch Presque Isle River, future water sampling should include measurement of this parameter.

Phosphorus

While phosphorus occurs naturally in low concentrations, too much phosphorus in the water can promote growth of algae and cause our waters to look green or brown with globs of slime which have a strong odor. In 2010, phosphorous criteria were implemented to provide that Wisconsin rivers should not have more than 100 parts per billion (0.1 mg/L) of phosphorous, and that Wisconsin streams should not have more than 75 parts per billion (0.075 mg/L). These numbers were developed by Wisconsin DNR scientists by evaluating the effects of phosphorous pollution on Wisconsin rivers, lakes, and streams. South Branch Presque Isle River had total phosphorus levels of <0.02 mg/L (July 25, 1989) and 0.016 mg/L (August 7, 2010) which are considered low.

Trophic State

Trophic state is another indicator of water quality (Carlson, 1977). Waterbodies can be divided into three categories based on trophic state – oligotrophic, mesotrophic, and eutrophic. These categories reflect the water's nutrient and clarity levels (Shaw et al., 2004). Trophic state was not collected for South Branch Presque Isle River, so future water quality sampling should include measurements of this parameter.

Nitrogen

Nitrogen is second only to phosphorus as an important nutrient for aquatic plant and algae growth (Shaw et al., 2004). Human activities on the landscape greatly influence the amount of nitrogen in a river. Nitrogen may come from lawn fertilizer or septic systems near the waterbody or from agricultural activities in the watershed. Nitrogen may enter a waterbody from surface runoff or groundwater sources.

Nitrogen exists in streams in several forms. Presque Isle River was analyzed for total Kjeldahl nitrogen (0.3 mg/L), nitrate-nitrite (not detected July 25, 1989 and August 17, 2011), and ammonia (0.04 mg/L). Nitrogen is a major component of all organic (plant and animal) matter. Decomposing organic matter releases ammonia, which is converted to nitrate if oxygen is present (Shaw et al., 2004). All inorganic forms of nitrogen can be used by aquatic plants and algae (Shaw et al., 2004). If these inorganic forms of nitrogen exceed 0.3 mg/L (as N) in spring, there is sufficient nitrogen to support summer algae blooms (Shaw et al., 2004). Elevated concentrations of ammonium, nitrate, and nitrite, derived from human activities, can stimulate or enhance the development, maintenance and proliferation of primary producers (phytoplankton, benthic algae, macrophytes), contributing to the widespread phenomenon of the cultural (human-made) eutrophication of aquatic ecosystems (Camargo et al., 2007). The nutrient enrichment can cause important ecological effects on aquatic communities, since the overproduction of organic matter, and its subsequent decomposition, usually lead to low dissolved oxygen concentrations in bottom waters, and sediments of eutrophic and hypereutrophic aquatic ecosystems with low turnover rates (Camargo et al., 2007).

Biological Oxygen Demand

Biochemical oxygen demand (BOD) is another factor that affects D.O. concentrations in streams. BOD is the amount of oxygen consumed by microbial decomposition of organic waste, and is measured by the change in D.O. in a sealed water sample over a five-day incubation period (UWGB, 2012). High levels of

organic pollution, such as from sewage treatment plants, agricultural runoff, or industrial wastes, can significantly increase the BOD in a stream. Relatively healthy streams will have a 5-day BOD reading of less than 2 mg/L, whereas polluted streams may approach 10 mg/L (UWGB, 2012). Presque Isle River had a very low BOD of 1.5 mg/L on July 25, 1989.

Chloride

The presence of chloride (Cl^-) where it does not occur naturally indicates possible water pollution (Shaw et al., 2004). Chloride does not affect plant and algae growth and is not toxic to aquatic organisms at most of the levels found in Wisconsin (Shaw et al., 2004). Chloride values were not collected for South Branch Presque Isle River, so future water quality sampling should include measurements of this parameter.

Sulfate

Sulfate in water is primarily related to the types of minerals found in the watershed, and to acid rain (Shaw et al., 2004). Sulfate concentrations are noted to be less than 10 mg/L in Vilas County (Lillie and Mason, 1983). Sulfate values were not collected for South Branch Presque Isle River, so future water quality sampling should include measurements of this parameter.

Conductivity

Conductivity is a measure of the ability of water to conduct an electric current. Conductivity is reported in micromhos per centimeter ($\mu\text{mhos/cm}$) and is directly related to the total dissolved inorganic chemicals in the water. Usually, values are approximately two times the water hardness, unless the water is receiving high concentrations of human-induced contaminants (Shaw et al., 2004). Streams in Northeast Wisconsin typically have conductivity values between 300 and 1800 $\mu\text{mhos/cm}$ (UWGB, 2012). Presque Isle River had conductivity readings of 89 $\mu\text{mhos/cm}$ in 1961, and 91 $\mu\text{mhos/cm}$ in 1989.

pH

The acidity level of a waterbody regulates the solubility of many minerals. A pH level of 7 is considered neutral. The pH level in Wisconsin lakes ranges from 4.5 in acid, bog lakes to 8.4 in hard water, marl lakes (Shaw et al., 2004). Natural rainfall in Wisconsin averages a pH of 5.6. Some minerals become available under low pH (especially aluminum, zinc, and mercury) and can inhibit fish reproduction and/or survival. Mercury and aluminum are not only toxic to many kinds of wildlife, but also to humans (especially those that eat tainted fish). The pH scale is logarithmic, so every 1.0 unit change in pH increases the acidity tenfold. Water with a pH of 6 is 10 times more acidic than water with pH of 7. Streams in Northwest Wisconsin typically have pH values between 7.0 and 9.0; depending on the time of year that sampling occurs. The water quality standard for most surface waters in Wisconsin to support fish and aquatic life is a pH between 5.0 and 9.0, with no change greater than 0.5 units outside the estimated natural seasonal maximum and minimum values (UWGB, 2012). Presque Isle River is slightly alkaline with pH values of 6.8 (October 24, 1961) and 7.7 (July 25, 1989).

Alkalinity

Alkalinity levels in a river are affected by the soil minerals, bedrock type in the watershed, and frequency of contact between river water and these materials (Shaw et al., 2004). Alkalinity is important in a waterbody to buffer the effects of acidification from the atmosphere. Acid rain has long been a problem with waterbodies that have low alkalinity levels and high potential sources of acid deposition. Alkalinity was tested on October 24, 1961 with a value of 77 mg/L CaCO₃. Based on this value, South Branch Presque Isle River is not sensitive to acid rain, although new samples should be collected (Table 1).

<i>Sensitivity to acid rain</i>	<i>Alkalinity value (mg/L or ppm CaCO₃)</i>
High	0-2
Moderate	2-10
Low	10-25
Non-sensitive	>25

Hardness

Hardness levels in a river are also affected by the soil minerals, bedrock type in the watershed, and frequency of contact between river water and these materials (Shaw et al., 2004). One method of evaluating hardness is to test for calcium carbonate (CaCO₃). Total hardness of Presque Isle River was sampled on July 25, 1989 and was 42 mg/L CaCO₃. The surface water of Presque Isle River is generally categorized as “soft water” (Table 2).

Soft water	0-60
Moderately hard water	61-120
Hard water	121-180
Very hard water	>180

Calcium and Magnesium Hardness

The carbonate system provides acid buffering through two alkaline compounds: bicarbonate and carbonate. These compounds are usually found with two hardness ions: calcium and magnesium (Shaw et al., 2004). Calcium is the most abundant cation found in Wisconsin lakes. Its abundance is related to the presence of calcium-bearing minerals in the lake watershed (Shaw et al., 2004). Aquatic organisms such as native mussels use calcium in their shells. The aquatic invasive zebra mussel tends to need calcium levels greater than 20 mg/L to maintain shell growth. Presque Isle River indicates to have very low calcium levels in July, 1989 (12 mg/L) which are an indication that zebra mussels could flourish. In August 17, 2010 the calcium was 20.5 mg/L. Magnesium levels were also collected in 1989, with a value of 3 mg/L.

Sodium and Potassium

Sodium and potassium are possible indicators of human pollution in a waterbody, since naturally occurring levels of these ions in soils and water are very low. Sodium is often associated with chloride and gets into rivers from road salting, fertilizations, and human and animal waste (Shaw et al., 2004). Potassium is the key component of commonly-used potash fertilizer, and is abundant in animal waste. Both of these elements are held by soils to a greater extent than is chloride or nitrate; therefore, they are not as useful as indicators of pollution impacts (Shaw et al., 2004). Although not normally toxic themselves, they provide a strong indication of possible contamination by more damaging compounds (Shaw et al., 2004). Because sodium and potassium levels are not known for South Branch Presque Isle River, future water sampling should include measurement of this parameter.

Dissolved Organic Carbon

Dissolved Organic Carbon (DOC) is a food supplement, supporting growth of microorganisms, and plays an important role in global carbon cycle through the microbial loop (Kirchman et al., 1991). In general, organic carbon compounds are a result of decomposition processes from dead organic matter such as plants. When water contacts highly organic soils, these components can drain into rivers and lakes as DOC. DOC is also extremely important in the transport of metals in aquatic systems. Metals form extremely strong complexes with DOC, enhancing metal solubility while also reducing metal bioavailability. Baseflow concentrations of DOC in undisturbed watersheds generally range from 1 to 20 mg/L carbon. DOC was not sampled in South Branch Presque Isle River, so future sampling should include the parameter.

Silica

The earth's crust is abundant with silicates or other compounds of silicon. Water dissolves the silica and pH can be a key factor in regulating the amount of silica that is dissolved. Silica concentrations are usually within the range of 5 to 25 mg/L. Generally waterbodies that are fed by groundwater have higher levels of silica. Because silica levels are not known for South Branch Presque Isle River, future water sampling should include measurement of this parameter.

Aluminum

Aluminum occurs naturally in soils and sediments. In low pH (acidic) environments aluminum solubility increases greatly. With a low pH and increased aluminum values, fish health can become impaired. This can have impacts on the entire food web. Aluminum also plays an important role in phosphorus cycling in waterbodies. When aluminum precipitates with phosphorus in river sediments, the phosphorus will not dissolve back into the water column as readily. Because aluminum levels are not known for South Branch Presque Isle River, future water sampling should include measurement of this parameter.

Iron

Iron also forms sediment particles that bind with and store phosphorus when dissolved oxygen is present. When oxygen concentration gets low (for example, in winter or in the deep water near sediments) the iron

and phosphorus dissolve in water. This phosphorus is available for algal blooms. Because iron levels are not known for South Branch Presque Isle River, future water sampling should include measurement of this parameter.

Manganese

Manganese is a mineral that occurs naturally in rocks and soil. In rivers, manganese is usually in particulate form. When the dissolved oxygen levels decrease, manganese can convert from an insoluble form to soluble ions. A manganese concentration of 0.05 mg/L can cause color and staining problems. Because manganese levels are not known for the River, future water sampling should include measurement of this parameter.

Sediment

River sediments are sometimes analyzed for chemical constituents that they contain. This is especially true for toxic metals such as mercury, chromium, selenium, and others. Sediments also tend to record past events as particulates settle down and become part of the sediment. Biological clues for the historic conditions in the river can be gleaned from sediment samples. Examples include analysis of pollen or diatoms that might help understand past climate or trophic states in the waterbody. Sediment data was not collected for South Branch Presque Isle River, and future sampling should include this parameter.

Total Suspended Solids

Total suspended solids are all particles suspended in the water. Silt, plankton, and wastes are examples of these solids and can come from runoff of agricultural land, erosion, and can be produced by bottom-feeding fish. As the suspended solid levels increase, they absorb heat from sunlight which can increase the water temperature. They can also block the sunlight that plants need for photosynthesis. These events can in turn affect the amount of dissolved oxygen in the river. Waterbodies with total suspended solids levels less than 20 mg/L are considered “clear,” while levels between 40 and 80 mg/L are “cloudy.” The TSS in Presque Isle River was 2 mg/L in July, 1989, which is low.

Aquatic Invasive Species

There is no report of invasive species found in South Branch Presque Isle River. On May 18, 2018, a White Water biologist conducted an Aquatic Invasive Species Bridge and Shoreline Survey. The survey was conducted on Riverside Drive by the culvert (N46°14.660, W089°44.633). There were no AIS found.

An educational workshop for South Branch of the Presque Isle River enthusiasts was conducted by White Water Associates, Dr. Dean Premo, describing stream and riparian ecology while emphasizing the impacts that invasive species can have on these important ecosystems. The workshop took place August 24, 2018 at the Presque Isle Library. Highlights were the basic ecology of a stream, what can be monitored in a stream (discussed the historic aquatic plant surveys, shoreline survey, and macroinvertebrates), riparian area ecology, stressors, aquatic invasive species, and recommendations for good stewardship.

Resources

- Black, J.J., M. A. Lloyd & C.W. Threinen. 1963. *Surface water resources of Vilas County*. Wis. Cons. Dept. Madison, WI.
- Camargo, Julio A., Álvaro Alonso (Lead Author); Raphael D. Sagarin (Topic Editor). 02 April 2007. *Inorganic nitrogen pollution in aquatic ecosystems: causes and consequences*. In: Encyclopedia of Earth. Eds. Cutler J. Cleveland (Washington, D.C.: Environmental Information Coalition, National Council for Science and the Environment). Retrieved January 24, 2012.
<http://www.eoearth.org/article/Inorganic_nitrogen_pollution_in_aquatic_ecosystems:_causes_and_consequences>
- Carlson, R.E. 1977. *A Trophic State Index for Lakes*. *Limnology and Oceanography*. 22: 361-369.
- Kirchman, David L.; Suzuki, Yoshimi, Garside, Christopher, Ducklow, Hugh W. (15). 1991. *High turnover rates of dissolved organic carbon during a spring phytoplankton bloom*. *Nature* 352 (6336): 612–614. Doi:10.1038/352612a0. Retrieved 2012.
<<http://www.nature.com/nature/journal/v352/n6336/abs/352612a0.html>>
- Lillie, R. A. and J. W. Mason. 1983. *Limnological Characteristics of Wisconsin Lakes*. Wis. Dept. of Natural Resources Tech. Bull. Page 138. Madison, WI.
- Shaw, B. Mechenich, C, and Klessig, L. 2004. *Understanding Lake Data (G3582)*. Board of Regents of the University of Wisconsin System. Madison, WI.
- University Wisconsin Green Bay. 2012. *The Lower Fox River Watershed Monitoring Program*. Retrieved 2012. < <http://www.uwgb.edu/watershed/index.htm>>
- Wisconsin Department of Natural Resources. 10 Sept 2012. *Surface Water Integrated Monitoring Systems (SWIMS) Database*. Retrieved 2012. <<http://dnr.wi.gov/topic/surfacewater/swims/>>