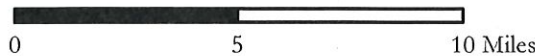


# Barron County

## Archaeological and Historical Sites

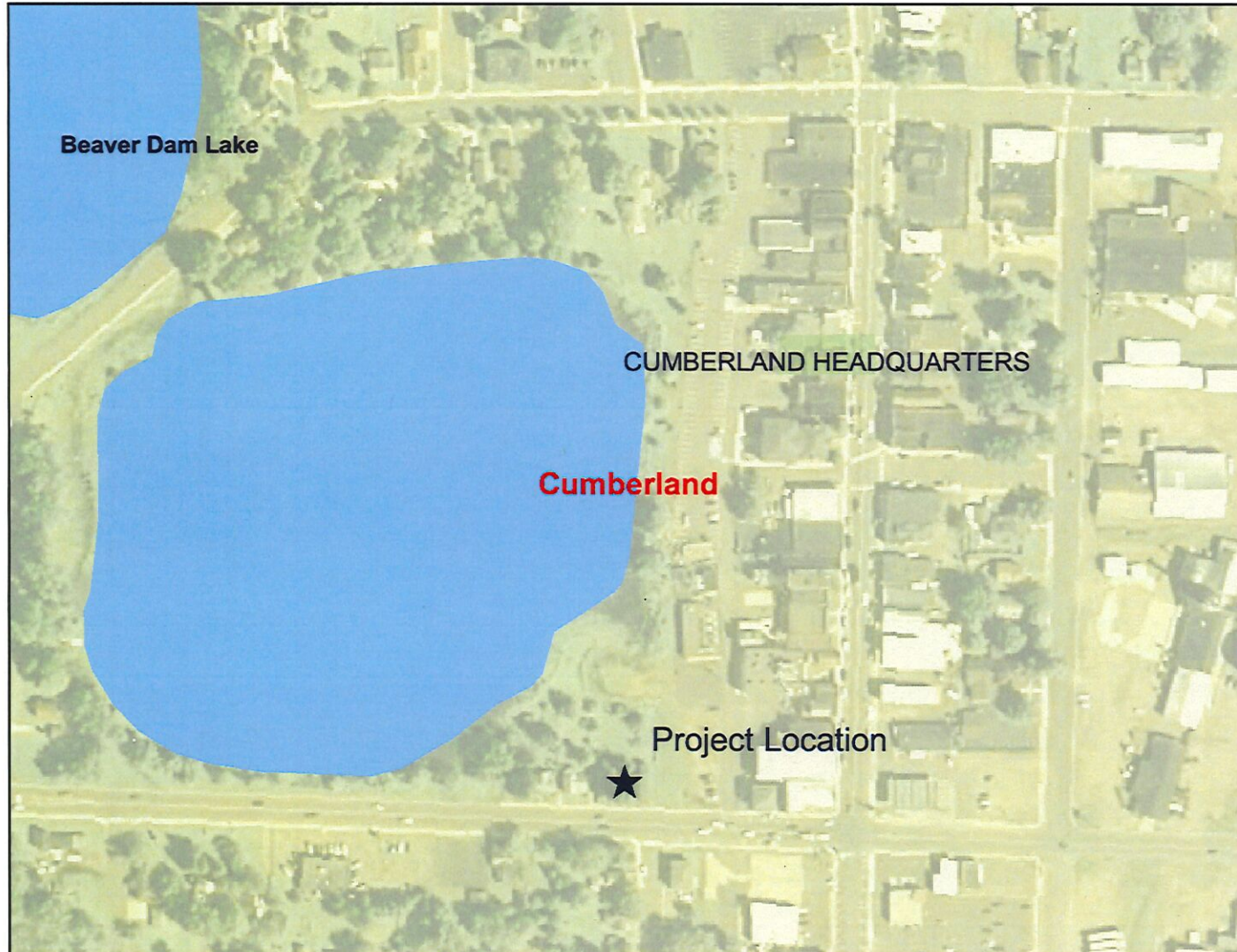
- Archaeological Site\*
- Historical Site†
- DNR Managed Land



\* This dataset represents the locations of archaeological sites as listed in the Archaeological Sites Inventory (ASI) of the Division of Historic Preservation, Wisconsin Historical Society. This specific dataset is a customized selection of QQ Sections that contain known archaeological sites and burial sites.  
 † This dataset represents the locations of historical sites as listed in the Architecture and History Inventory (AHI) of the Division of Historic Preservation, Wisconsin Historical Society. This specific dataset is a customized selection of QQ Sections that contain known historic properties.  
 This data was obtained and used with permission from the Division of Historic Preservation, Wisconsin Historical Society. Data recent as of May 2012



# Project Location



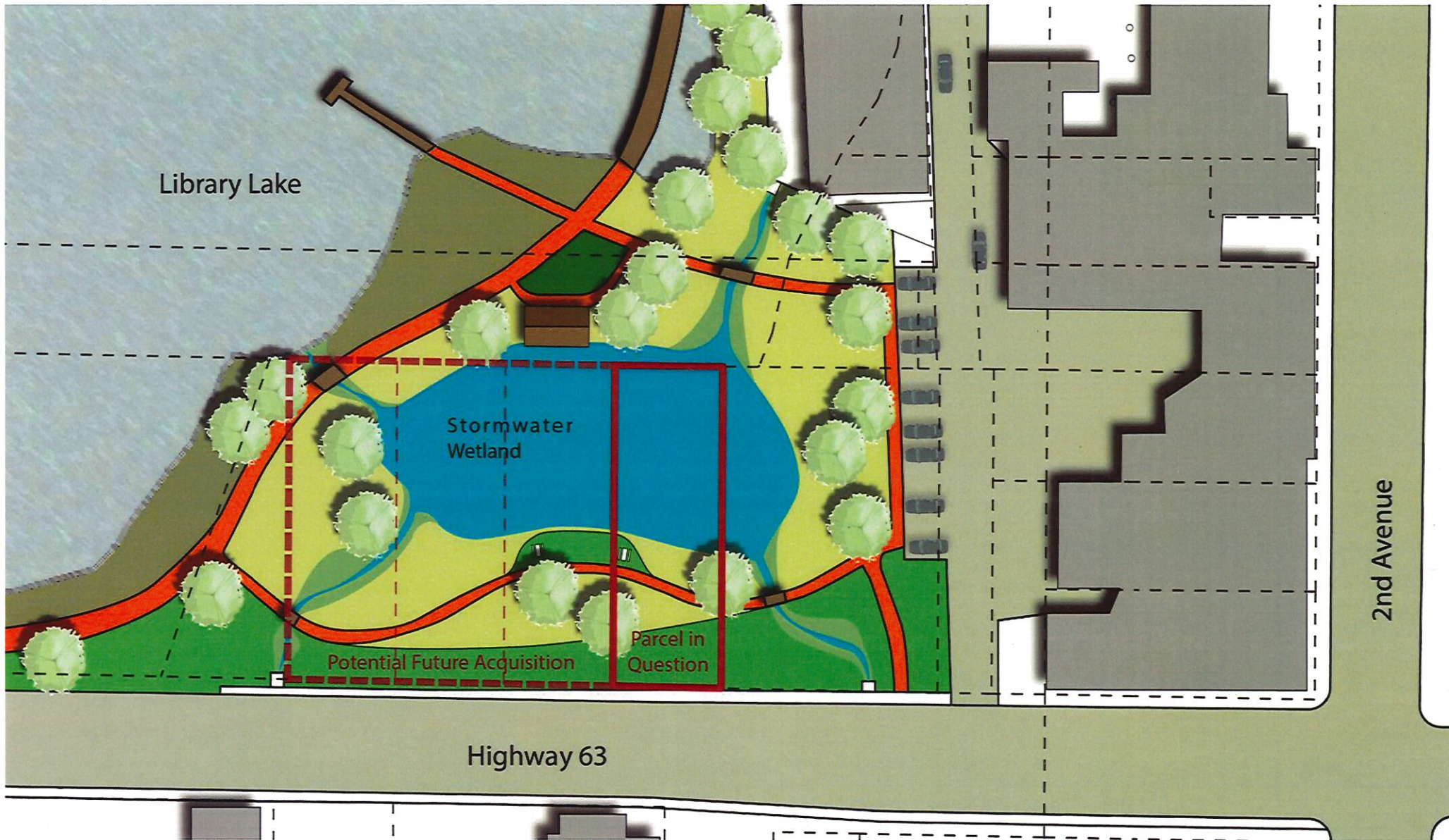
### Legend

- County Boundaries
- Civil Towns
- Civil Town
- 24K Open Water
- Cities and Villages
- Village
- City
- DNR Managed Lands
- Fee

Scale: 1:3,147



This map is a user generated static output from an Internet mapping site and is for general reference only. Data layers that appear on this map may or may not be accurate, current, or otherwise reliable. THIS MAP IS NOT TO BE USED FOR NAVIGATION.



Library Lake

Stormwater Wetland

Potential Future Acquisition

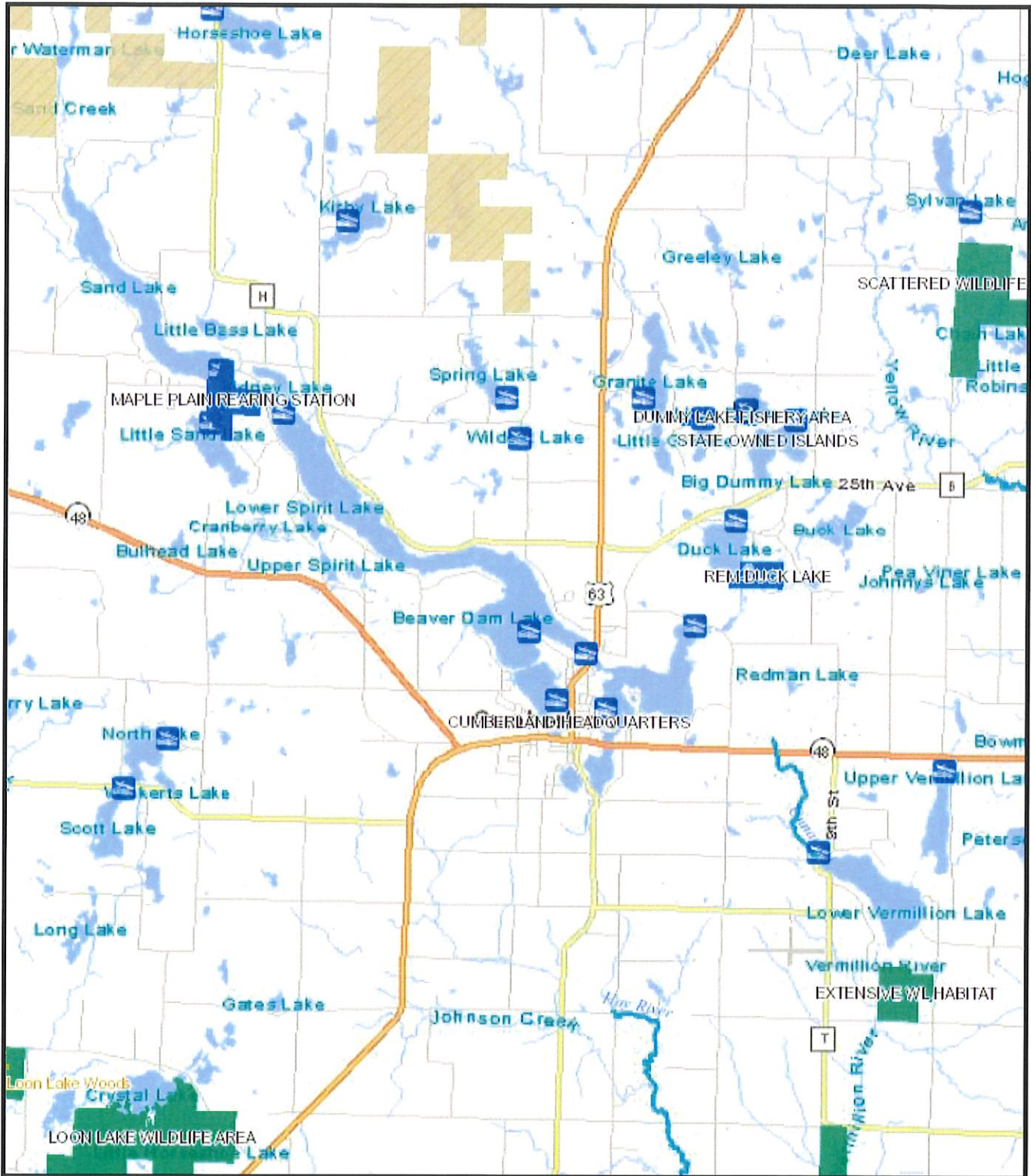
Parcel in Question

Highway 63

2nd Avenue

Print

Close



**Wisconsin DNR  
Managed Lands**  
<http://dnr.wi.gov/>



Sources: TeleAtlas, ESRI, USGS, WisDOT, and other data providers.  
**DISCLAIMER**  
Wisconsin DNR makes no warranties, either express or implied regarding the accuracy and/or completeness of the information contained herein. THIS DATA IS SUBJECT TO CHANGE ON A DAILY BASIS.