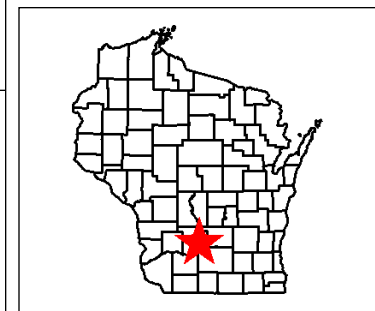
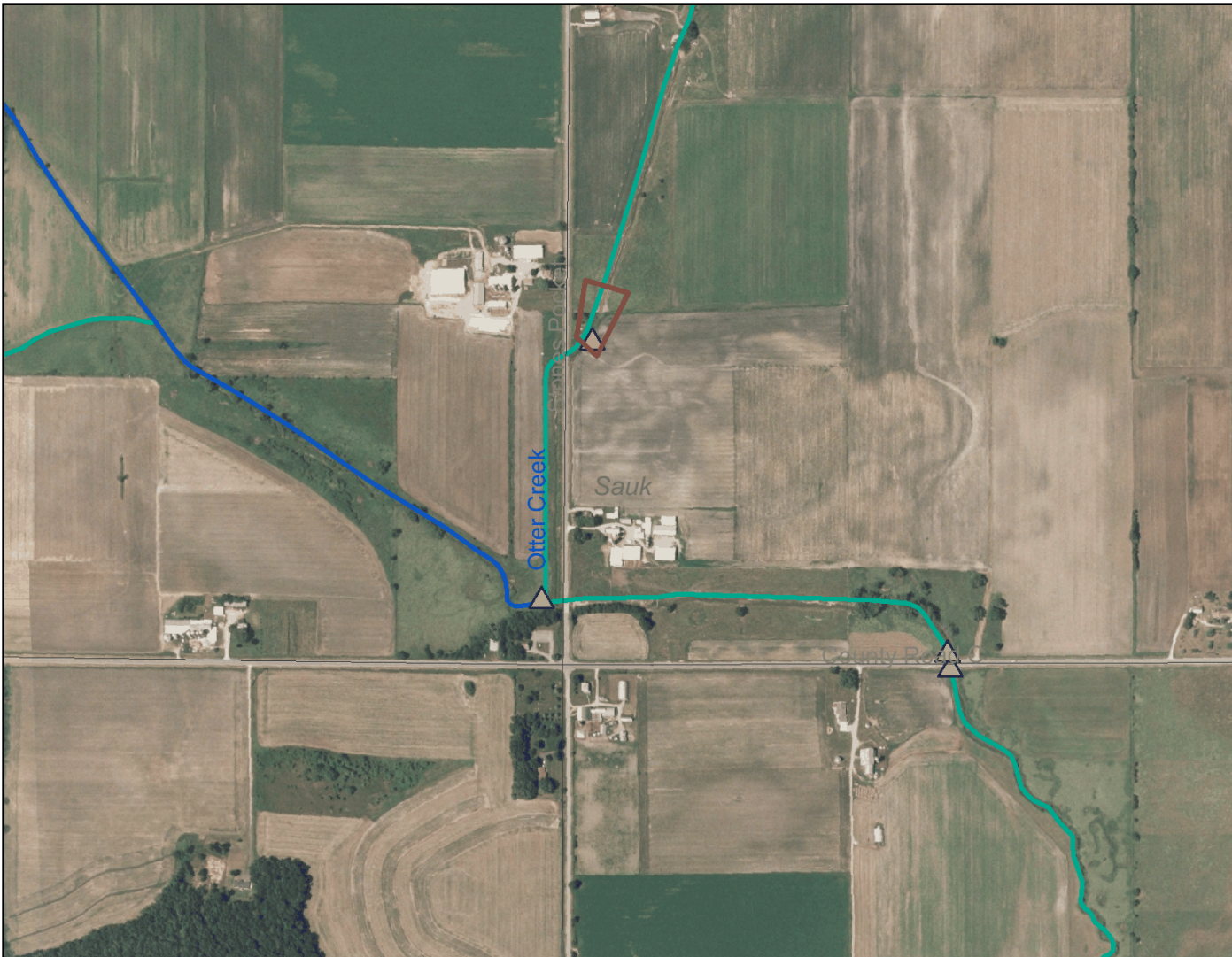


Otter Creek Stones Pocket Rd. Sauk Co.



Legend

- Local Roads
- SWIMS Monitoring Station Points With Data
- Station with historic data
- Station with recent data
- Inactive Obsolete
- New Pending
- Inactive Pending
- FHDB Pending
- Active
- 24K Stream Order**
- 1st Order
- 2nd Order
- 3rd Order
- 4th Order
- 5th Order
- 6th Order
- 7th Order
- 8th Order
- 9th Order
- Rivers and Streams
- 24K Open Water
- County Boundary
- Municipalities**
- Village
- City

0 900 1800 2700 ft.



Scale: 1:9,501

This map is a user generated static output from an Internet mapping site and is for general reference only. Data layers that appear on this map may or may not be accurate, current, or otherwise reliable. THIS MAP IS NOT TO BE USED FOR NAVIGATION.