



100 State Street, Suite 400 Madison, WI 53703

www.CapitalAreaRPC.org

August 13, 2020

Mr. Timothy R. Asplund
Monitoring Section Chief
WDNR – Bureau of Water Quality
101 S. Webster Street
Madison, WI 53707-7921

Re: Water Quality Management Letter for Sewer Service Area Amendment Request
#1803 – Central USA (Fitchburg)

Dear Mr. Asplund:

The City of Fitchburg has submitted a request for a sewer service area amendment to the *Dane County Water Quality Plan*. The proposed amendment is currently in the City of Fitchburg, in the Lake Waubesa-Yahara River (HUC 12: 070900020703) watershed. It includes the addition of approximately 89.2 acres of land, including approximately 5.8 acres of proposed environmental corridor, for a net of approximately 83.4 developable acres to the Central Urban Service Area. A public hearing was held on the proposed amendment at the July 9, 2020, Regional Planning Commission meeting. The City's application and the Commission staff's analysis report of the proposed amendment have been submitted to the Department's Surface Water Integrated Monitoring System.

It is the Capital Area Regional Planning Commission staff's opinion that the proposed amendment is consistent with water quality standards under Wis. Stat. § 281.15, and the adopted Policies and Criteria for the Review of Sewer Service Area Amendments to the *Dane County Water Quality Plan*, by meeting the state and local requirements identified below. Additional actions have also been recommended below to further improve water quality and environmental resource management.

At our August 13, 2020 meeting, the Capital Area Regional Planning Commission voted to recommend approval of this amendment to the Wisconsin Department of Natural Resources, based on the land uses and services proposed, and in recognition of the state and local requirements for the following:

1. State and local review and approval of stormwater management plan(s) is required, including Regional Planning Commission staff review and approval as part of the sewer extension review process.
 - a. Stormwater and erosion control practices are required to be installed prior to other land disturbing activities. Infiltration practices are required to be protected from compaction and sedimentation during land disturbing activities.

- b. Peak rates of runoff are required to be controlled for the 1-, 2-, 10-, and 100-year 24-hour design storms to “pre-development” levels, in accordance with the City of Fitchburg and Dane County Stormwater Ordinances.
 - c. Sediment control is required that achieves at least 80% sediment control for the amendment area based on the average annual rainfall, with a minimum of 60% of that control occurring prior to infiltration, in accordance with the City of Fitchburg and Dane County Stormwater Ordinances.
 - d. Runoff volume control is required that maintains the post development stay-on volume to at least 90% of the pre-development stay-on volume for the average annual rainfall period, in accordance with the City of Fitchburg and Dane County Stormwater Ordinances.
 - e. Oil and grease control are required that treats the first 0.5 inches of run-off using best management practices at commercial and industrial sites, in accordance with the City of Fitchburg and Dane County Stormwater Ordinances.
 - f. Maintaining pre-development groundwater recharge rates from the Wisconsin Geological and Natural History Survey’s 2012 report, Groundwater Recharge in Dane County, Wisconsin, Estimated by a GIS-Based Water-Balance Model (a range of 9 to 10 inches/year for the amendment area or by a site specific analysis, when required by the City of Fitchburg and Dane County Stormwater Ordinances.
2. Easements and perpetual legal maintenance agreements with the City, to allow the City to maintain stormwater management facilities if owners fail to do so, are required for any facilities located on private property. Stormwater management facilities shall be placed in public outlots whenever feasible and designated as environmental corridor.
 3. Environmental corridors are required to be delineated to include the park and open space, and stormwater management areas to meet the Environmental Corridor Policies and Criteria adopted in the *Dane County Water Quality Plan*.

The Commission’s recommendation for approval of this amendment is also conditioned on the continued commitment of the City of Fitchburg to pursue the following water quality measures:

1. Construct the sanitary sewer capacity improvements identified for the Woods Hollow and Syene Interceptors.
2. Encourage the responsible use of deicers and water softeners by continuing to participate in the trainings and outreach activities of the Wisconsin Salt Wise Partnership.
3. Implement a system that allows concerned citizens to report an erosion control concern on the City website.

Mr. Timothy R. Asplund

August 13, 2020

Page 3

4. Provide information and educational resources on an ongoing basis using a variety of outreach methods to educate watershed residents and businesses about water quality and the Waubesa Wetlands.
5. Work with the USGS to fund and implement a monitoring Station on Swan Creek at Lalor Road, as recommended by the UW WRM Waubesa Wetlands Study and discussed with USGS and CARPC staff.

It is also recommended that the City of Fitchburg pursue the following to further improve water quality and environmental resource management:

1. Work with the development team to design stormwater infiltration practices to achieve greater than 90% of pre-development infiltration where economically feasible based on soil conditions.
2. Request a formal Endangered Resources Review by the WDNR or one of their certified reviewers for potential impacts to endangered resources like rare plants, animals and natural communities and take necessary habitat protection measures if species are found.
3. Encourage the use of native flora in landscaping to provide suitable pollinator habitat and increased infiltration, where appropriate.

If you have any questions regarding this matter, please do not hesitate to contact Mike Rupiper, the Commission's Deputy Agency Director.

Sincerely,

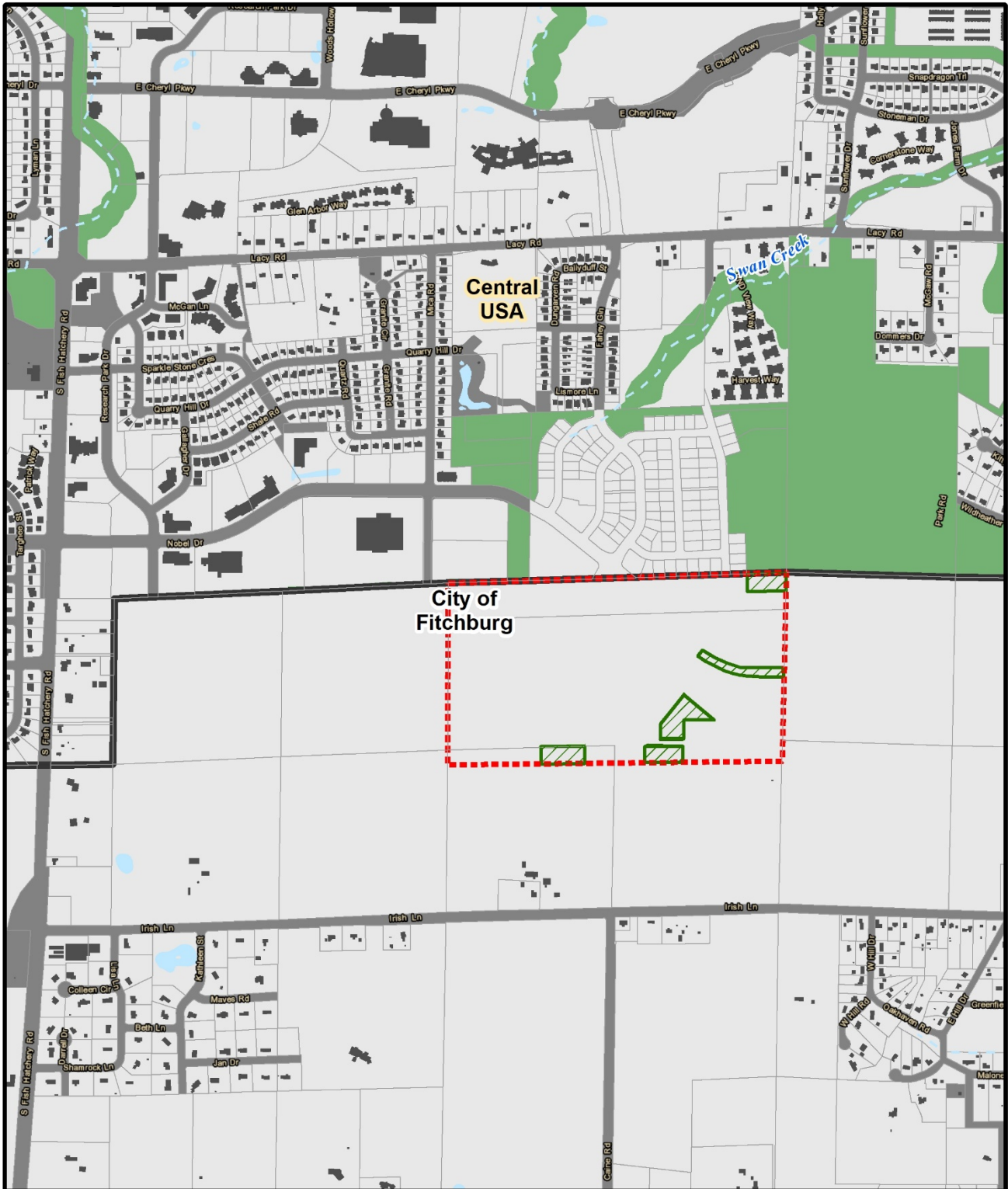


Larry Palm
Executive Chairperson





Kris Hampton
Secretary

cc: Ms. Sonja Kruesel, City Planner & Zoning Administrator, City of Fitchburg




Map 1 Amendment Area
 Proposed Amendment to the
 Dane County Water Quality Plan,
 Revising the Sewer Service Area
 Boundary and Environmental Corridors
 in the Central Urban Service Area

-  Service Area To Be Added (89.5 acres)
-  Existing Service Area
-  Environmental Corridor To Be Added (5.8 acres)
-  Existing Environmental Corridors

Date: 8/3/2020

0 1,000
 Feet

 Prepared by staff
 of the CARPC.