

# SOUTHEASTERN WISCONSIN REGIONAL PLANNING COMMISSION

W239 N1812 ROCKWOOD DRIVE • PO BOX 1607 • WAUKESHA, WI 53187-1607 • TELEPHONE (262) 547-6721  
FAX (262) 547-1103

Serving the Counties of:

KENOSHA  
MILWAUKEE  
OZAUKEE  
RACINE  
WALWORTH  
WASHINGTON  
WAUKESHA



August 7, 2020

Mr. Adrian Stocks  
Water Quality Bureau Director  
Wisconsin Department of Natural Resources  
101 South Webster Street  
Madison, WI 53707-7921

Dear Mr. Stocks:

Pursuant to the provisions of the cooperative agreement entered into on July 1, 2020, between the Southeastern Wisconsin Regional Planning Commission and the Wisconsin Department of Natural Resources governing the conduct of continuing areawide water quality management planning in southeastern Wisconsin during 2020, we are providing to you this report of work completed under that agreement for the period from January 1, 2020, through June 30, 2020. The work completed is summarized in the two attached tables.

Table 1 indicates the work products specified to be provided under each work element of the cooperative agreement, as well as a summary listing of the work products completed during the year. Table 2 provides additional detail as to the specific work products completed, and indicates the status of the delivery of those work products to you. The tabular data are also being submitted electronically to the Department SWIMS database, as is the agreed-upon procedure.

Should you have any questions concerning this matter, please do not hesitate to contact Laura K. Herrick of the Commission staff directly at (262) 953-3224, or [lherrick@sewrpc.org](mailto:lherrick@sewrpc.org).

Sincerely,

Kevin J. Muhs, PE, AICP  
Executive Director

KJM/LKH/md  
WDNR 2020 1ST HALF WQ PLAN STATUS REPORT (00254442).DOCX

Enclosures

cc: Mr. Tim Asplund, Section Chief, WDNR-Madison  
Ms. Lisa Helmuth, Water Resources Management Specialist, WDNR-Madison  
Ms. Linnea Rock, Water Resources Management Specialist, WDNR-Madison

**Table 1**  
**2020 Continuing Water Quality Planning Program Project Output Summary:**  
**January 1, 2020 Through June 30, 2020**

Work Project and Project Output Anticipated from January 1, Through December 31, 2020, per 2020 Agreement	Project Outputs Completed during January 1, Through June 30, 2020 (see Table 2 for details)
Project 300-1000: Water Quality Management Plan Coordination and Extension of Implementation Activities	
1. Two letter reports or memoranda	1. Two memoranda completed: Big Cedar Lake Watershed Land Use and Pollutant Loading Update and Pewaukee Lake Water Level Management and Outlet Dam Operation.
2. Assistance and Data Provision to WDNR, County Land and Water Conservation Committees, and Other Designated Management Agencies for Watershed and other Water Quality-Related WDNR Advisory Committees, Including Statewide Activities	2. <ul style="list-style-type: none"> <li>• Attendance and material review for four meetings of MMSD Technical Advisory Team (TAT)</li> <li>• Served on the following MMSD project committees:               <ul style="list-style-type: none"> <li>○ Burnham Canal technical stakeholder committee</li> <li>○ Milwaukee River rehabilitation project associated with removal of Estabrook Park dam and falls, along with channel improvements in the general reach</li> </ul> </li> <li>• Continued to participate in the Mukwonago River Initiative and Mukwonago River Fisheries Committee</li> <li>• Continued to provide assistance in the development of the Fox River Water Trail.</li> <li>• Participated as a member of the Root-Pike Watershed Initiative Network (WIN).</li> <li>• Commission staff serves on the Board as a non-voting advisor for the Southeastern Wisconsin Fox River Commission.</li> <li>• Participated in the Southeastern Wisconsin Watersheds Trust, Inc. Commission staff serves on the Board of Directors as a non-voting advisor and on the Science and Policy Committees.</li> <li>• Submitted comments on Chapter NR 193 program guidance that requested clarification on cost containment procedures and how these procedures may affect Regional Planning Commissions.</li> <li>• Provided letters of support to Ozaukee County for various grant initiatives.</li> </ul>
3. Assistance to 35 Established Waterbody Organizations and Participation with WDNR and Others in Statewide Lake Planning	3. <ul style="list-style-type: none"> <li>• Provided assistance to 22 waterbody organizations. This includes 16 lake-related organizations and 6 river-related organizations.</li> <li>• Assisted 13 Towns and Lake Districts to evaluate issues, address concerns, develop goals, and evaluate execution strategies.</li> <li>• Developed technical scopes of work, budgets, and schedules addressing four different topics at four different lakes.</li> <li>• Provided major assistance to the Southeast Fox River Partnership in developing, coordinating, and hosting the planned 8th Annual Fox River Summit in 2020. Had to unexpectedly cancel the Summit at the last minute due to complications from COVID-19.</li> </ul>
4. 30 Public Informational Reports or Presentations	4. 5 presentations on water quality issues and/or environmental issues.
5. WDNR-SEWRPC Program Coordination	5. Coordination with WDNR, including contract and work program development, and submittal of work products. Assisted lake and stream groups to better understand grant funding opportunities and changes to Surface Water Grant program with adoption of Chapter NR 193.
6. Attendance at 150 Meetings Related to Water Quality	6. Attended 56 meetings related to water quality planning

**Table 1 (Continued)**

<b>Work Project and Project Output Anticipated from January 1, Through December 31, 2020, per 2020 Agreement</b>	<b>Project Outputs Completed during January 1, Through June 30, 2020 (see Table 2 for details)</b>
7. Special subwatershed or County Land and Water Management Plan assistance	7. Commission staff served on technical advisory committees for Walworth County's and Washington County's Land and Water Resource Management Plans. Many of the activities listed elsewhere in this summary report also relate to land and water resource management in the counties of the Region. See specifically 300-1000, Items 2, 3, and 8 and 300-4000, Item 2
8. Miscellaneous Plan Implementation Activities	8. Maintain permit and data files; provision of information on a walk-in or telephone basis (270 meetings/phone calls/e-mails) (see Project 300-2000, Item 3)
Project 300-2000: Sanitary Sewer Extension Reviews and Assistance	
1. 165 Public and Private Sewer Extension Reviews	1. 66 public and private sewer extension reviews and letter reports
2. 40 Letter Reports Documenting In-Field Delineations of Environmentally Sensitive Lands	2. 9 letter reports
3. 150 Meetings/Phone Calls/E-mails to Review Environmentally Sensitive Areas and Related Matters Concerning Sewer Extensions and Sewer Service Areas	3. About 270 meetings/phone calls/e-mails with landowners, developers, and local officials
Project 300-3000: Sewer Service Area Plan Refinements	
1. One Sewer Service Area Plan	1. No sewer service area plans were completed
2. Revisions to Four Previous Sewer Service Area Plans	2. No amendments to previous sewer service area plans were completed
3. 25 Special Letter Reports on Environmentally Sensitive Areas	3. 15 letter reports
4. Provision of Data for WDNR Environmental Assessments	4. Provision of data for environmental assessments is now routinely provided
5. Meetings and Miscellaneous Activities	5. As needed
6. Development of Procedures for Environmentally Sensitive Lands Recommendations	6. Continued refinement of procedures and provision of additional mapping within each sewer service area
Project 300-4000: Regional Water Quality Management Plan Update	
1. Continue to Support Subregional Plan Amendment Activities	1. No specific work on this task
2. Implementation of the regional water quality management plan update for the greater Milwaukee watersheds	2. <ul style="list-style-type: none"> <li>• Coordination for the Water Quality Improvement Plan</li> <li>• Continued work on Oak Creek Watershed Restoration Plan</li> </ul>
Project 300-5000: Regional Water Quality Management Plan Update—Groundwater Management Studies	
1. Miscellaneous activities	No specific work on this task

**Table 2**  
**Summary of 2020 Work Program Project Outputs and Status of Documentation:**  
**January 1, 2020 Through June 30, 2020**

Work Products	Status of Documentation <sup>a</sup>
Project 300-1000: Water Quality Management Plan Coordination and Extension and Implementation Activities	
1. No Letter Reports <ul style="list-style-type: none"> <li>• Provided technical coordination and comments on the draft MMSD 2050 facility plan</li> <li>• Provided technical comments on draft Village of Twin Lakes facility plan</li> <li>• Provided support for a potential modification to the City of Oconomowoc wastewater treatment plant service area to send the Village of Lac La Belle flows to a future Town of Ixonia plant (Jefferson County).</li> <li>• Provided support to MMSD to serve new areas of the Town of Raymond and Village of Richfield.</li> <li>• Completed majority of work on a first generation SSSA plan for the Village of Yorkville.</li> <li>• Investigated performing a cost effective analysis for an area in the City of Port Washington municipal boundary but in the Village of Saukville SSSA.</li> <li>• Provided support information for a potential Village of Big Bend STP.</li> </ul>	--
2. Assistance and Data Provision for WDNR and Major Water Quality Management Plan Designated Management Agency Programs <ul style="list-style-type: none"> <li>• Participation as member of MMSD TAT, Including Meetings and Material Reviews. During the Reporting Period, Attended Four Meetings</li> <li>• Served on two MMSD project committees related to stream rehabilitation, fish passage, and wetland restoration</li> <li>• Participated in Mukwonago River Initiative and River Fisheries Committee</li> <li>• Continued to provide assistance for development of the Fox River Water Trail</li> <li>• Participation in Root-Pike Watershed Initiative Network</li> <li>• Participation as a technical advisor to the Southeastern Wisconsin Fox River Commission (SEWFRC)</li> <li>• Participation as a nonvoting Director and technical advisor to the Southeastern Wisconsin Watersheds Trust, Inc.</li> <li>• Submitted comments on NR 193</li> <li>• Provided letters of support to Ozaukee County for grant initiatives</li> </ul>	2 2 2 2 2 2 2 2
3. Assistance to Lake and River Organizations <ul style="list-style-type: none"> <li>• Provision of Assistance to a Total of 22 Lake or River Organizations and counties. See Item 3, 300-1000 table (attached)</li> </ul>	3
4. Public Information—Education Reports or Presentations <ul style="list-style-type: none"> <li>• 5 presentations on Water Quality Topics</li> </ul>	3 (one example provided)
5. WDNR Project Coordination and Work Program Development <ul style="list-style-type: none"> <li>• General Coordination with WDNR</li> <li>• Preparation of Annual Work Plans</li> <li>• Submittal of Work Products</li> </ul>	2 2 2
6. Attendance at 56 Meetings Related to Water Quality Planning	2
7. County Land and Water Resource Management Plan Assistance	2
8. Miscellaneous Plan Activities <ul style="list-style-type: none"> <li>• Maintenance and Review of Water Quality Related File Data, Including WPDES Permits for Public Sewage Treatment Plants</li> <li>• Provision of Available Information on Sewage Systems, Lakes, Environmentally Significant Areas. (Walk-In or by Telephone), About 271 Meetings/Phone Calls/E-mails (also relates to Project 300-2000, Item 3)</li> </ul>	2 2
Project 300-2000: Sanitary Sewer Extension Reviews	
1. 31 Public and 35 Private Sewer Extension Reviews (see listings)	3
2. 9 Letter Reports on Field Delineation of Environmentally Sensitive Lands for Sewer Extension Projects	3 (one example provided)
3. About 270 Meetings/Phone Calls/E-mails Related to Environmentally Sensitive Lands Data and Related Matters Concerning Sewer Extensions, Service Areas, and Other Development or Preservation Projects (also relates to Projects 300-1000 and 300-3000)	2

**Table 2 (Continued)**

<b>Work Products</b>	<b>Status of Documentation<sup>a</sup></b>
Project 300-3000: Sewer Service Area Plan Refinements	
1. No Sewer Service Area Plans	--
2. No Amendment Documents for Previous Sewer Service Area Plan (previous efforts can be found at <a href="http://www.sewrpc.org/SEWRPC/LandUse/SanitarySewerandWaterSupplySer.htm">www.sewrpc.org/SEWRPC/LandUse/SanitarySewerandWaterSupplySer.htm</a> )	4
3. 15 Special Letter Reports	3 (one example provided)
4. Provision of Data for Environmental Assessments is Routinely Provided as Part of Submittal to WDNR	2
5. Meetings and Other Miscellaneous Activities	2
6. Procedures for Adding Detail to Sewer Service Area Plans Regarding Environmentally Sensitive Lands Changes Are Incorporated into New Reports and Routine Submittal of Supplementary Data with Report Submittal. Will Continue to Refine Procedure	2
Project 300-4000: Regional Water Quality Management Plan Updating and Extension	
1. Continue to Support Subregional Plan Amendment Activities	--
2. Coordination for the Water Quality Improvement Plan and incorporation of the Milwaukee River Basin TMDL in the Regional Water Quality Management Plan	2
Continued work on the Oak Creek Watershed Restoration Plan	4
Project 300-5000: Regional Water Quality Management Plan Update—Groundwater Management Studies	
1. Miscellaneous Activities Related to Water Conservation and the Regional Water Supply Plan	--

<sup>a</sup> Status of documentation Categories:

1—Previously provided to Wisconsin Department of Natural Resources with project output reports.

2—No specific documentation required.

3—Provided to Wisconsin Department of Natural Resources with this report.

4—See SEWRPC website.

**2020 Lake and River Water Quality Management Activities (300-1000-ITEM 3):  
January 1, 2020 Through June 30, 2020**

Lake or River	Activity
Nagawicka Lake	Continued to refine draft plan while awaiting review and approval by WDNR.
School Section Lake	SEWRPC staff continued to serve on a technical advisor committee to restore the failed dam at the request of Waukesha County. District's WDNR grant application for update to aquatic plant management plan was successful. Arranged fieldwork logistics for inventory of aquatic plant community and purple loosestrife to be conducted in late summer 2020.
Silver Lake (Washington County)	Waiting for WDNR feedback to finalize Plan. In the interim, continued to refine plan.
Pewaukee Lake	Finalized and published Community Assistance Planning Report 58, 3 <sup>rd</sup> edition, <i>A Lake Management Plan for Pewaukee Lake, Waukesha County, Wisconsin</i> . Completed a staff memorandum report addressing Pewaukee Lake water level management and outlet dam operation to provide technical guidance requested by WDNR and the Lake Pewaukee Sanitary District regarding a water level order revision. This memorandum documented water levels, dam operation procedures, and ice damage to shoreline and also provided examples of operational diagrams that would standardize dam operation and enhance communication of operation to the public. Discussed upcoming development and zoning code changes with the Town of Delafield.
North Lake/Oconomowoc River	SEWRPC staff studied sediment and nutrient sources to the Oconomowoc River upstream of North Lake. Estimated sediment transport and retention within the watershed and refined working draft of forthcoming memorandum report. Met with and advised North Lake Management District on potential management strategies to mitigate pollutant loading to North Lake. Collaborated with North Lake Management District, Terra Vigilis, and Carroll University on proposed fieldwork for pilot study examining water quality and wave action on North Lake. Hosted meeting with aforementioned parties to review preliminary results of pilot study and recommend changes to better address study goals.
Fox (Illinois) River	SEWRPC staff compiled a report detailing streambank erosion assessment and nonpoint source pollutant loading prioritization in the Fox River watershed. This work is based on field inspection of the lower 26 miles (from state line to the Waterford Impoundment). In addition to this data, report includes factors influencing pollutant load and delivery to the river (e.g., watershed size and characteristics).
Southeastern Wisconsin Lakes and Rivers	Presented preliminary findings and significance of chloride study at one regional event: 5 <sup>th</sup> Annual Healthy Lake Conference in Oconomowoc, WI held over Zoom. Hosted first meeting of Aquatic Habitat Subcommittee of the Regional Natural Areas Plan update at SEWRPC office to review proposed elements, data, indices, and data sources for revised aquatic habitat ranking scheme. With assistance from WDNR staff, compiled data on water quality, aquatic plants, fish, mussels, macroinvertebrates, NHI-listed species, and physical characteristics for every stream, river, and lake in the Region in preparation for natural areas ranking scheme revision and application. Served on steering Committee for the Ozaukee Treasures Network.
Twin Lakes	Assisted the Village of Twin Lakes, Kenosha County with ice damage and water level complaints. Continue to compile and analyze water level, flow, and rainfall data. Provided ice monitoring calendars to lakeshore residents to assist with data collection efforts. Collected water level and climate data.
Comus Lake/Turtle Creek	Continued collecting water temperature data and compiled water quality, land use, fish, and macroinvertebrate data for Comus Lake and Turtle Creek. Coached District staff on lake user survey and potential approaches to improve the number of survey responses.
Lauderdale Lake Chain	Prepared draft aquatic plant management plan update and submitted to WDNR for review and approval. Plan has been approved by WDNR and will be finalized and published in early fall 2020.
Walworth County Lakes	Served on technical advisory committee for Walworth County Land and Water Resource Management Plan.
Milwaukee River Watershed	Assisted Ozaukee County with various stream and natural resource initiatives. Wrote letters of support for various natural-resource grant applications.

**2020 Lake and River Water Quality Management Activities (300-1000-ITEM 3):  
January 1, 2020 Through June 30, 2020 (Continued)**

Lake or River	Activity
Menomonee River and Kinnickinnic River	Continued to serve on the Kinnickinnic River rehabilitation and flood mitigation project stakeholder and team member committee providing advice on MMSD efforts to rehabilitate the stream reaches and improve flood management between S. 6th Street and S. 27th Street and the lower Kinnickinnic River downstream of 6th Street and upstream of the Milwaukee Harbor estuary.
Milwaukee Estuary Area of Concern	SEWRPC staff continued to serve on the Milwaukee Estuary Area of Concern (AOC) Fish and Wildlife Technical Advisory Committee.
Lake Michigan Direct Tributaries	Served as an adviser on Schlitz Audubon Nature Center's Conservation Committee. Major focus has been ravine stabilization.
Powers Lake	Developed scope of work and commenced project to assist District of Powers Lake with Lake resident opinion survey conducted every ten years. Collaborated with District to revise previous survey by addressing novel concerns of Lake residents. Assisted District in preparing and distributing 300 mailed copies of survey to District residents. Completed surveys are currently being mailed to SEWRPC office. SEWRPC staff will tabulate results and prepare staff memorandum presenting these results in fall 2020.
Big Cedar Lake	Completed a staff memorandum report that updated the land use and pollutant loading of the Big Cedar Lake watershed. This update also required an updated watershed delineation to address hydrologic changes within the watershed. Staff memorandum and virtual presentation presented to several stakeholder organizations in June 2020.
Delavan Lake	Presented update on Delavan Lake comprehensive management plan and aquatic plant management plan progress at Town of Delavan Lake Committee meeting. Arranged fieldwork logistics to inventory of aquatic plant community and sediment sampling on Jackson Creek to be conducted in late summer 2020. Designed unmanned aerial vehicle (UAV) survey of Delavan Lake that records numbers, types, and activities of all boats on Lake with 20-minute flights. Assisted Town of Delavan with site selection for evaluation of best management practice efficacy.
Booth Lake	Discussed strategies to evaluate issues influencing water level in a seepage lake and ways that excess water may be controlled. Given the desires, interests, and needs of the group, advised the group that a consultant may better meet their needs.
Geneva Lake	Developed and, based upon Conservancy needs and desires, revised a scope of work and commenced project to examine the water quality and physical characteristics of the Lake's tributary streams and recommend strategies to improve stream conditions. Arranged fieldwork logistics to inventory stream physical characteristics that will be conducted in early fall 2020.
Eagle Spring Lake	Developed a scope of work to complete an aquatic plant management inventory and management plan update and coached District on how to prepare grant application with Surface Water Grant program changes under NR 193. Developed a separate scope of work for a comprehensive management plan, including water quality, water levels, groundwater, pollutant loading, boat activity, and fisheries.
Whitewater-Rice Lake	Reviewed unsuccessful WDNR grant application with the District and provided advice on how to improve future applications. Revised scope of work and assisted District with preparations to apply for WDNR grant in 2020 with consideration of changes from NR 193.
Hickory Lake	Discussed dam management concerns with dam owner. Presented an array of management opportunities.
Other	Participated in Statewide programs: SEWRPC staff continued to provide assistance as requested to the Wisconsin Lakes Partnership. SEWRPC staff attended the aquatic plant training webinar hosted by UW-Extension Lakes as well as the virtual Wisconsin Lakes and Rivers Convention.  Worked with the Southeastern Wisconsin Fox River Commission, Southeast Fox River Partnership, and the Fox River Ecosystem Partnership to organize, coordinate, and host the 8th Annual Fox River Summit to continue to bring together watershed organizations in Wisconsin and Illinois for a one-day discussion of common interests and possible opportunities for future cooperation. As previously stated, this Summit had to be canceled at the last minute due to unforeseen complications with COVID-19.





**300-1000**  
**ITEM 4**



# Southeastern Wisconsin Regional Planning Commission



Location: SEWRPC

1<sup>st</sup> Aquatic Habitat Subcommittee Meeting  
of the Natural Areas Technical Advisory Committee Plan:  
2020 update

January 29, 2020

Worksheet Number

## Scope/Schedule

2020: (June)

- Develop a Revised Lake & Stream Classification Scheme
- Address issues with critical species habitat sites/data and sources

2021:

- Update Lake & Stream site inventory.
  - (Quantify historic loss, to extent practical)
- Produce Watershed-based site profile summaries
- Develop/update any supplementary information outside of site profiles (e.g. the list of regionally uncommon species, management decision making tools)
- Decide what level of site mapping can be published.
- Grapple with the reality of management needs and incorporate those into our concept of protection.

2022:

- Complete revised Plan & Recommendations
- Watershed-based site profile summaries published online
- Provide information through online data viewer with links to site attributes and site profiles

## Background

August 1989-Natural Area Protection and Management Planning Program Prospectus—Identified 3 serious problems:

1. Loss of significant natural areas
2. Loss of rare, threatened, and endangered species
3. Need to identify and delineate natural areas and critical habitats for rare, threatened, and endangered species

Purpose is to guide the identification, protection, and management of high-quality natural areas and critical species habitats in Southeastern Wisconsin "...thus contributing to the maintenance and restoration of the natural beauty of the Region and to the quality of life and the maintenance of biotic diversity within the Region"(page 6)

## Background

494 Natural Areas Cover 101 Square Miles as of 2010



"Tracts of land or water so little modified by human activity, or which have sufficiently recovered from the effects of such activity, that they contain intact native plant and animal communities believed to be representative of the pre-European-settlement landscape."

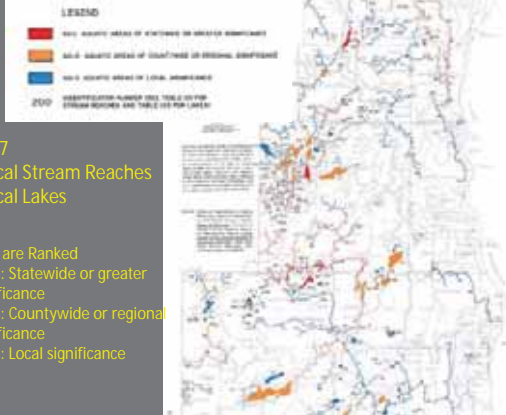
Land Sites are Ranked

- NA-1: Statewide or greater significance
- NA-2: Countywide or regional significance
- NA-3: Local significance

Factors in ranking and designation include:

- Biodiversity
- Natural communities present and their rarity
- Structural and ecological integrity
- Extent of human disturbance

## Background



Year-1997  
118 Critical Stream Reaches  
148 Critical Lakes

Water Sites are Ranked

- AQ-1: Statewide or greater significance
- AQ-2: Countywide or regional significance
- AQ-3: Local significance

## 1997-Stream Assessment Criteria

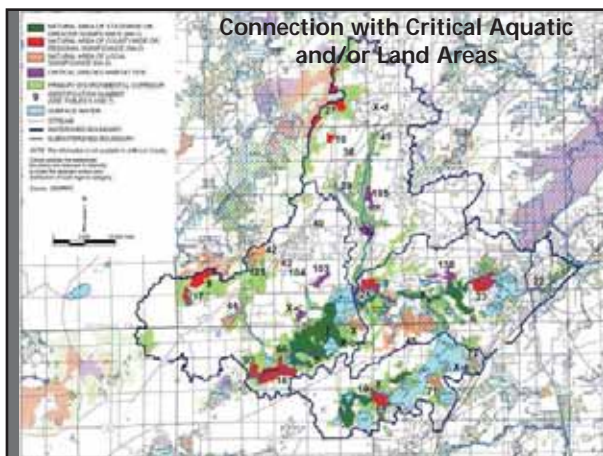
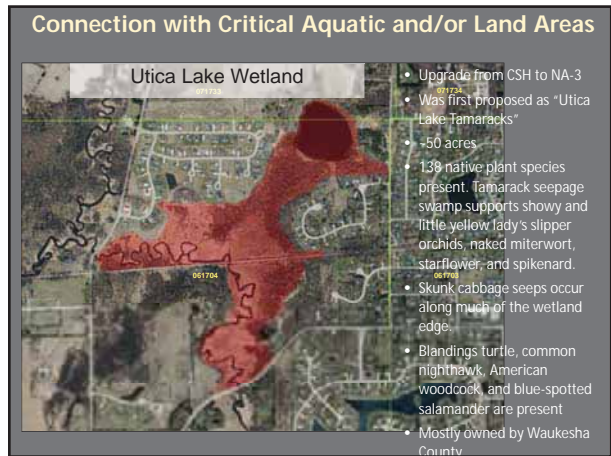
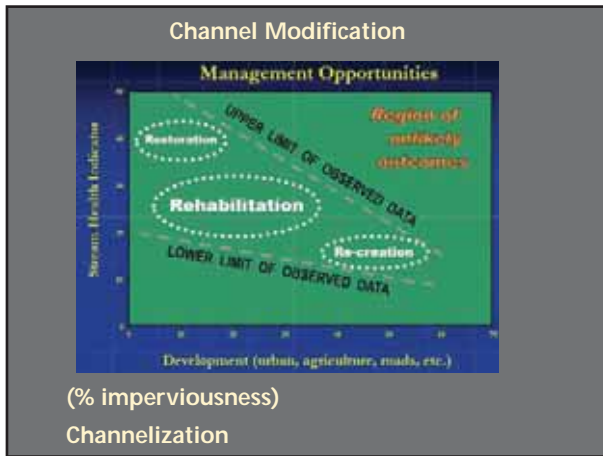
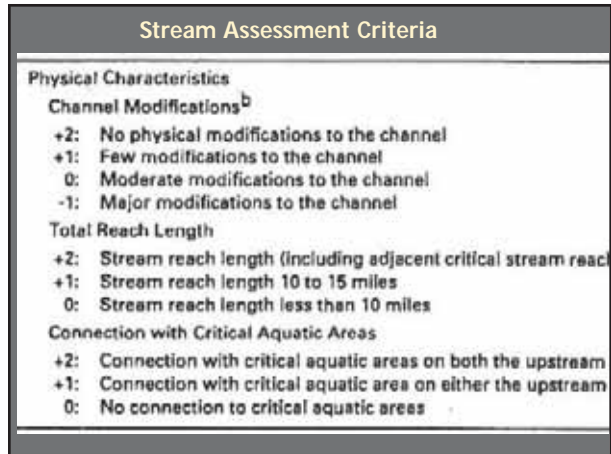
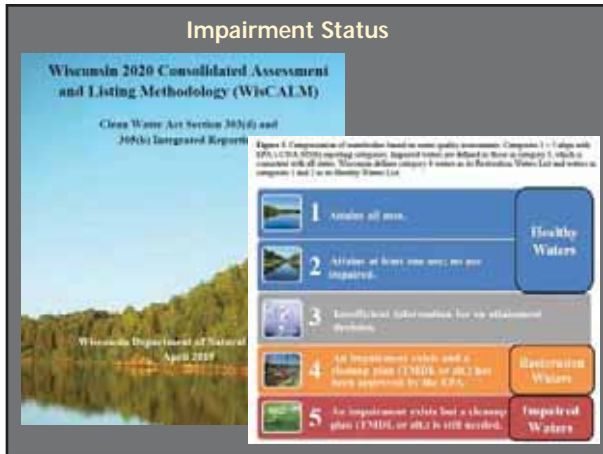
### Water Quality

#### Chemical Data<sup>a</sup>

- +3: No water quality problems documented
- +1: No more than one water quality problem
- 0: Sufficient data not available
- 1: Two water quality problems
- 2: Three water quality problems
- 3: Four or more water quality problems

#### Physical Data

- +2: Low streambed sedimentation
- 0: Moderate streambed sedimentation or data not available
- 2: High streambed sedimentation



### 1997-Stream Assessment Criteria

**Waters**

**Fish Population and Diversity<sup>c</sup>**

- +4: Excellent
- +2: Good
- 0: Fair or data not available
- 1: Poor

**Critical Fish Species**

- +5: Presence of endangered fish species (may also contain threatened or "special concern" fish species)
- +4: Presence of threatened fish species (may also contain "special concern" fish species)
- +2: Presence of "special concern" fish species
- 0: No critical fish species documented

**Critical Aquatic Amphibian and Reptile Species-Suitable Habitat within or Adjacent to the Stream Channel**

- +3: Presence of endangered aquatic herpetile species habitat (may also contain threatened or "special concern" herpetile species habitat, or both)
- +2: Presence of threatened aquatic herpetile species habitat (may also contain "special concern" aquatic species habitat)
- +1: Presence of "special concern" aquatic herpetile species habitat
- 0: No critical aquatic herpetile species habitat

**Critical Mussel Species**

- +5: Presence of endangered mussel species (may also contain threatened or "special concern" mussel species)
- +4: Presence of threatened mussel species (may also contain "special concern" mussel species)
- +2: Presence of "special concern" mussel species
- +1: Supports mussel beds of nonlisted mussel species
- 0: Reach not sampled for mussel species
- 1: No presence of mussel species when sampled

### 1997-Stream Assessment Criteria

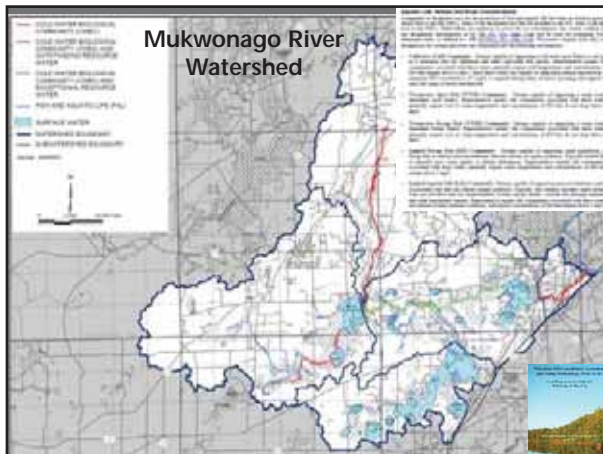
**Wildlife (continued)**

**Trout Species Habitat**

- +2: Class I trout stream
- +1: Class II trout stream
- 0: Class III trout stream or data not available

**Biotic Index Rating<sup>d</sup>**

- +3: Excellent
- +2: Very Good
- +1: Good
- 0: Fair or data not available
- 1: Poor
- 2: Very Poor



### New Fish & Invertebrate IBIs and Condition Threshold Categories



Natural Community	Fish IBI Type	Fish IBI	Condition Category
Coldwater	Coldwater Fish	80-100	Excellent
		70-79	Good
		60-69	Fair
Cool/Cold as Cool Water	Small Stream (Streamnet) Fish	80-100	Excellent
		70-79	Good
		60-69	Fair
Cool/Cold Mountain	Cool/Cold Transition Fish	80-100	Excellent
		70-79	Good
		60-69	Fair
Cool/Warm Mountain	Cool/Warm Transition Fish	80-100	Excellent
		70-79	Good
		60-69	Fair
Warm Mountain	Small Stream (Streamnet) Fish	80-100	Excellent
		70-79	Good
		60-69	Fair
Warm Mountain	Watershed Fish	80-100	Excellent
		70-79	Good
		60-69	Fair
Large River	River Fish	80-100	Excellent
		70-79	Good
		60-69	Fair

Stream Type	Condition Category
7-12	Excellent
13-17	Good
18-23	Fair
24-27	Poor





### 1997-Lake Assessment Criteria

**Water Quality**  
**Trophic Status (Wisconsin Trophic State Index Values)<sup>®</sup>**  
 +5: Below 44 (oligotrophic)  
 +4: 44-48 (oligomesotrophic or mildly mesotrophic)  
 +3: 49-53 (mesotrophic)  
 +2: 54-64 (mesoeutrophic or mildly eutrophic)  
 +1: 65-75 (eutrophic)  
 0: Above 75 (hypereutrophic)

**Size**  
**Surface-Water Area**  
 +3: Greater than 100 acres  
 +2: 50 to 100 acres  
 +1: 10 to 49 acres  
 0: Less than 10 acres

### Water Quality/Size

#### 4.1 Lake Classification

WDNR classifies or groups similar lake types based upon physical data. Specifically, lake size, stratification characteristics, hydrology and watershed size are identified as the primary influences on a lake and, to a large degree, these characteristics determine the natural biological communities each lake type supports. Using this information, lakes should fall into one of ten natural community types (Table 4).

**Table 4. Lake and reservoir natural communities and defining characteristics.**

Natural Community	Stratification Status	Hydrology
<b>Lakes/Reservoirs &lt;10 acres</b>		
• Small	Variable	Any
<b>Lakes/Reservoirs ≥10 acres</b>		
• Shallow Seepage	Mixed	Seepage
• Shallow Headwater		Headwater Drainage
• Shallow Lowland	Stratified	Lowland Drainage
• Deep Seepage		Seepage
• Deep Headwater	Stratified	Headwater Drainage
• Deep Lowland		Lowland Drainage
<b>Other Classification (any size)</b>		
• Spring Ponds	Variable	Spring Hydrology
• Two-Story Fishery Lakes	Stratified	Any
• Impounded Flowing Waters	Variable	Headwater or Lowland Drainage

### Lake Natural Communities

- Based on lake surface area, stratification status, hydrology, and watershed size
  - Data from Register of Waterbodies (ROW), Wisconsin Lake Book, and DNR 24K Hydro database
- Classification data available on SWDVI

### Lake Natural Communities in the Region

Lake Natural Community	# of Lakes	Percent
Deep Headwater	43	10.2
Deep Lowland	22	5.2
Deep Seepage	29	6.9
Impounded Flowing Water	10	2.4
Reservoir	9	2.1
Shallow Headwater	13	3.1
Shallow Lowland	11	2.6
Shallow Seepage	26	6.2
Small	182	43.2
Two-Story	16	3.8
Not Assigned	60	14.3

### Water Quality/Size

**Don't forget Impaired Waters....**

**Table 5. Trophic Status Index (TSI) thresholds – general assessment of lake Natural Communities.**

Condition	Shallow			Deep			
	Headwater	Lowland	Seepage	Headwater	Lowland	Seepage	Two-Story
<b>Excellent</b>	< 53	< 53	< 45	< 48	< 47	< 43	< 43
<b>Good</b>	53 – 61	53 – 61	45 – 57	48 – 55	47 – 54	43 – 52	43 – 47
<b>Fair</b>	62 – 70	62 – 70	58 – 70	56 – 62	55 – 62	53 – 62	48 – 52
<b>Poor</b>	≥ 71	≥ 71	≥ 71	≥ 63	≥ 63	≥ 63	≥ 53

Note: Although TSI thresholds are not yet available for these natural communities: 1) Small Lakes; 2) Spring Ponds, and 3) Impounded Flowing Waters, by default assessments are completed for the most similar natural community for which thresholds are currently available.

### 1997-Lake Assessment Criteria

**Wildlife**

**Critical Fish Species**

- +5: Presence of endangered fish species (may also contain threatened or "special concern" fish species)
- +4: Presence of threatened fish species (may also contain "special concern" fish species)
- +2: Presence of "special concern" fish species
- 0: No critical fish species documented


**Critical-Aquatic-Amphibian-and-Reptile-Species-Suitable Habitat within or Adjacent to Lake**

- +3: Presence of endangered aquatic herptile species habitat (may also contain herptile species habitat, or both)
- +2: Presence of threatened aquatic herptile species habitat (may also contain "special concern" aquatic herptile species habitat)
- +1: Presence of "special concern" aquatic herptile species habitat
- 0: No critical aquatic herptile species habitat

**Wildlife Habitat**

- +1: Outstanding wildlife habitat
- 0: Data not available
- 1: No outstanding wildlife habitat

### Fishery Classification for Lakes



Lake Class	# of Lakes	Percent
Simple - Cool - Clear	1	0.4
Complex - Cool - Dark	2	0.7
Simple - Cool - Dark	1	0.4
Complex - Riverine	2	0.7
Simple - Riverine	22	7.9
Complex - Two Story	13	4.7
Simple - Two Story	3	1.1
Simple - Warm - Clear	9	3.2
Simple - Warm - Clear	11	4
Complex - Warm - Dark	32	11.6
Simple - Warm - Dark	106	38.3
Simple - Harsh - Has Fishery	24	8.7
Simple - Harsh - No Fishery	49	17.7
Simple - Trout Pond	2	0.7


- Two-tiered lake fishery classification model developed by Rypel et al., 2019
  - Classified by sportfish data, then lake temperature, water clarity, and hydrology
  - Provides CPUE and mean size for sportfishes in each lake type

### Fishery Classification for Lakes

No.	Category	Description
1	Simple-Cool-Clear	... (text partially illegible) ...
2	Complex-Cool-Dark	... (text partially illegible) ...
3	Simple-Cool-Dark	... (text partially illegible) ...
4	Complex-Riverine	... (text partially illegible) ...
5	Simple-Riverine	... (text partially illegible) ...
6	Complex-Two Story	... (text partially illegible) ...
7	Simple-Two Story	... (text partially illegible) ...
8	Simple-Warm-Clear	... (text partially illegible) ...
9	Complex-Warm-Dark	... (text partially illegible) ...
10	Simple-Warm-Dark	... (text partially illegible) ...
11	Simple-Harsh-Has Fishery	... (text partially illegible) ...
12	Simple-Harsh-No Fishery	... (text partially illegible) ...
13	Simple-Trout Pond	... (text partially illegible) ...
14	Simple-Two Story	... (text partially illegible) ...
15	Simple-Warm-Clear	... (text partially illegible) ...
16	Simple-Warm-Dark	... (text partially illegible) ...
17	Simple-Harsh-Has Fishery	... (text partially illegible) ...
18	Simple-Harsh-No Fishery	... (text partially illegible) ...
19	Simple-Trout Pond	... (text partially illegible) ...
20	Simple-Two Story	... (text partially illegible) ...

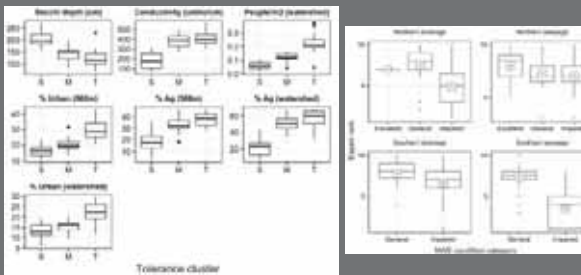
Source: Rypel et al., 2019

### Aquatic Plant Point-Intercept Surveys



- ~140 surveys on 70 waterbodies in Region
- Summary metrics from point-intercept surveys to describe aquatic plant community conditions:
  - Species Richness
  - FOI (or mean C) (Nichols, 1988)
  - Maximum Depth of Colonization
  - Littoral Frequency of Occurrence (FOO)
- Individual FOO for invasive species
  - Better representation than presence/absence for determining how "invaded" a waterbody is

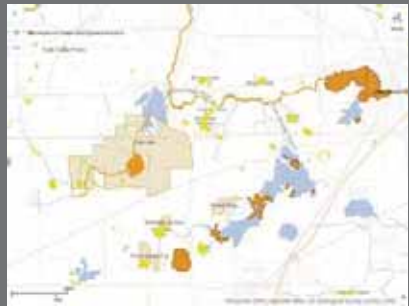
### Macrophyte Bioassessment for Aquatic Plants in Lakes



- Macrophyte bioassessment model using lake PI data developed by Mikulyuk et al., 2017
  - Uses species FOO to determine anthropogenic disturbance to plant community
    - Each species assigned a "tolerance" value - Sensitive, Moderate, or Tolerant
  - Lakes grouped by ecotone and hydrology
    - Different rankings for each group

Source: Mikulyuk et al., 2017

### WDNR-Designated Sensitive Areas



- Defined as "an area of aquatic vegetation identified by the department as offering critical or unique fish and wildlife habitat, including seasonal or life-stage requirements, or offering water quality or erosion control benefits to the body of water"
- 81 Sensitive Areas on 35 waterbodies in the Region



## Mussel or Macroinvertebrate Rankings for Lakes?



- Some mussel observations in lakes on Wisconsin Mussel Monitoring Program iNaturalist page
- Other sources of information?

## 1997-Lake Assessment Criteria

### Buffer

#### Development of Shoreline

- +3: Less than 5 percent development of shoreline
- +2: 5 percent to 24 percent development of shoreline
- +1: 25 percent to 50 percent development of shoreline
- 0: More than 50 percent development of shoreline

### Physical Characteristics

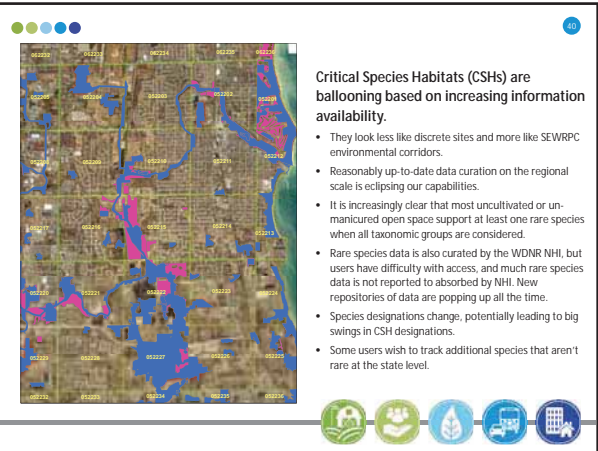
#### Connection with Critical Aquatic Areas

- +2: Connection to critical aquatic areas at both the inlet and outlet of the lake
- +1: Connection to critical aquatic area at either inlet or outlet of the lake
- 0: No connection to critical aquatic areas

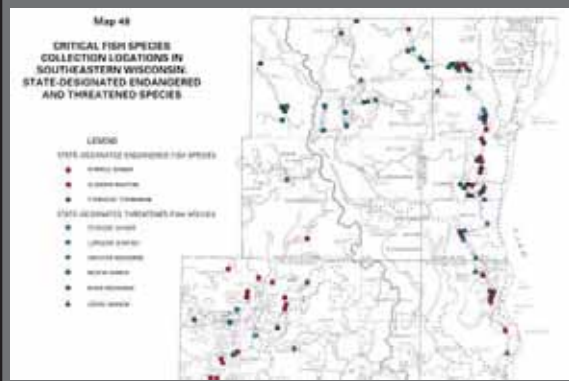
## Silver Lake Fen and Tamaracks



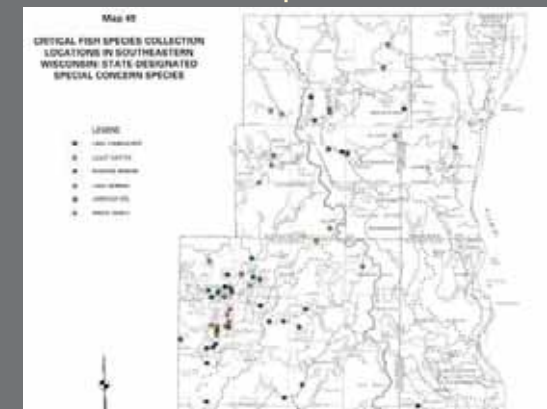
- Upgrade from CSH (Silver Lake Woods and Silver Lake Swamp) to NA-3 and expand
- ~36 acres
- Calcareous fens associated with springs and tamarack swamps around Silver Lake
- Slender bog arrow grass (*Triglochin palustris*), grass of Parnassus (*Parnassia glauca*), Sage willow (*Salix candida*), fen twayblade orchid (*Liparis loeselii*), and green bog orchid (*Platanthera huronensis*) among new species observed
- Recommendation: Private conservation organization



## Critical Fish Species-1997



## Critical Fish Species-1997



## Critical Fish Species-State Wildlife Action Plan

Establish list of Regionally uncommon aquatic  
& semi-aquatic Species:

Fish,  
Invertebrates,  
Herptiles,  
Submergent/Floating plants

## Proposed Future Meetings: 2020

Feb Mar **Apr** May **June**

draft  
Pilot aquatic  
Schemes  
Regionally  
uncommon spp.?

completed  
aquatic areas  
Assessment scheme

Jul Aug Sep **Oct** **Nov** Dec

Full-Regional  
application  
aquatic areas  
Assessment scheme

# Thank You

Tom Slawski | Chief Biologist  
Justin Poinatte | Senior Biologist

tslawski@sewrpc.org | 262.953.3263

SEWRPC.org



/SEWRPC



@SEW\_RPC

**300-2000**  
**ITEM 1**



## Letter Requests

Number of records found: 39.

Number	Civil Division	County	Date Received	Date Answered	Location
<b>PSC Requests</b>					
PSC-2020-001	City of Greenfield	Milwaukee	1/2/2020	1/9/2020	Greenfield Rehab Hospital 06, 21, 17-2 3200 S. 103rd Street
PSC-2020-002	Village of Slinger	Washington	1/2/2020	1/13/2020	Stonefield Terrace Apartments, (10) 8-Unit Residential Buildings 10, 19, 16-4 750 feet east of American Eagle Drive and Stoney Lane
PSC-2020-003	Village of Saukville	Ozaukee	1/9/2020	1/31/2020	(1) Starbucks 11, 21, 25-4 Southwest of E. Green Bay Avenue and Market Street
PSC-2020-004	Village of Waterford	Racine	1/21/2020	1/28/2020	Deer Trail Condominiums, (2) 8-Unit Multi-family - Buildings No.1 and 2 04, 19, 36-3 East of S. 7th Street and 300 feet south of E. Main Street
PSC-2020-005	Town of Geneva	Walworth	1/17/2020	1/28/2020	Geneva National Condominium No. 59 and No. 61, (6) Buildings 02, 17, 31-2 600 feet southeast of Geneva National Avenue West and Hunt Club Drive
PSC-2020-006	City of Oak Creek	Milwaukee	1/30/2020	2/10/2020	Avid Hotel, (1) Building 05, 22, 19-4 9315 S.13th Street
PSC-2020-007	City of Racine	Racine	2/10/2020	2/18/2020	AJAX II 03, 23, 16-3 North of 16th Street and 100 feet west of Clark Street
PSC-2020-008	City of Racine	Racine	2/10/2020	2/18/2020	16Clark Apartments, (1) Multi-family Building 03, 23, 16-3 Clark Street and 15th Street
PSC-2020-009	City of Franklin	Milwaukee	2/11/2020	2/18/2020	Knollwood Legacy Apartments, (5) 8-Unit Buildings 05, 21, 08-3 7811-7883 S. Scepter Drive
PSC-2020-010	City of Delavan	Walworth	2/5/2020	4/10/2020	The Harbor Club at Lake Lawn 02, 16, 15-3 South of STH 50 and CTH F 02, 16, 22-1
PSC-2020-011	City of Franklin	Milwaukee	2/14/2020	2/20/2020	The Learning Experience, (1) Day Care Facility 05, 21, 08-4 9651 W. Drexel Avenue
PSC-2020-012	City of New Berlin	Waukesha	2/14/2020	2/28/2020	(1) Industrial Building 06, 20, 34-2 South of W. Small Road and 1,000 feet east of W. Sundown Drive 06, 20, 34-3

Number	Civil Division	County	Date Received	Date Answered	Location
PSC-2020-013	Village of Pleasant Prairie	Kenosha	2/27/2020	3/5/2020	Lakeview Lot 2, (1) Building 01, 22, 28-2 West of 80th Avenue and 750 feet south of 104th Street
PSC-2020-014	City of Waukesha	Waukesha	2/26/2020	3/5/2020	(1) Kwik Trip Convenience Store 07, 19, 34-1 1700 Pewaukee Road
PSC-2020-015	City of Waukesha	Waukesha	2/26/2020	3/5/2020	(1) Kwik Trip Convenience Store/Car Wash 06, 19, 15-4 West of S. West Avenue and Travis Lane
PSC-2020-016	City of Oak Creek	Milwaukee	3/4/2020	3/13/2020	Milwaukee Yard, (1) Indoor Sports Complex Building 05, 22, 07-4 East of I-94/I-41 and 1,000 feet north of W. Drexel Avenue
PSC-2020-017	Village of Waterford	Racine	3/3/2020	3/24/2020	Assisted Living Condominium Community, (1) Building and (1) Future Development 04, 19, 25-4 North of Apple Road (STH 164) and 200 feet east of Cornerstone Crossing
PSC-2020-018	Village of Pleasant Prairie	Kenosha	3/9/2020	3/24/2020	Crown Development, (1) Industrial Building 01, 22, 28-2 Southeast of 86th Avenue and Lakeview Parkway
PSC-2020-019	City of Kenosha	Kenosha	3/4/2020	3/24/2020	Old Dominion, (1) Industrial Building 01, 22, 04-1 6824 77th Avenue and Lakeview Parkway/104th Street/STH 165 01, 22, 04-4
PSC-2020-020	City of New Berlin	Waukesha	3/11/2020	5/8/2020	New Berlin South, (1) 4-Story Hotel 06, 20, 27-4 5295 S. Moorland Road (CTH O)
PSC-2020-021	City of Port Washington	Ozaukee	3/20/2020	4/10/2020	Park Street Development, (20) Storage Units - Two separate units served by sewer 11, 22, 32-1 723 Schmitz Drive
PSC-2020-022	Village of Lannon	Waukesha	3/13/2020	4/21/2020	Rock Point Village (Phase I), (1) Amenity Building, (5) Multi- family Residential Buildings, and (1) private main to serve as a future private sewer connection point 08, 20, 17-1 Northeast of Main Street (CTH F) and proposed Rock Pointe Way
PSC-2020-023	Village of Grafton	Ozaukee	3/18/2020	4/21/2020	Hickory Street Townhouses, (3) Multi-family Buildings 10, 21, 13-4 Southwest of Green Bay Road (CTH O) and Hickory Street
PSC-2020-024	City of Brookfield	Waukesha	3/19/2020	4/30/2020	The Corridor, (2) Office Buildings (2 and 6-Story) 07, 20, 33-1 South of Golf Parway and 500 feet west of S. Calhoun Road
PSC-2020-025	City of Kenosha	Kenosha	4/7/2020	4/30/2020	ULINE-W8 Distribution Center, (1) Building 02, 21, 24-4 Southeast of 128th Avenue and Burlington Road (STH 142) 02, 21, 25-1

Number	Civil Division	County	Date Received	Date Answered	Location
PSC-2020-026	City of Elkhorn	Walworth	4/16/2020	4/30/2020	(1) Municipal Administration Building 02, 17, 07-2 Southeast of north cul-de-sac of Seymour Court and 500 feet north of Commerce Court
PSC-2020-027	City of Waukesha	Waukesha	5/4/2020	5/8/2020	Fox Run Shopping Center Redevelopment, (1) Micro Hospital, (1) Existing Bank, (1) Bank, and (3) Multi-family Apartment Buildings (74 Total Units) 06, 19, 08-4 Northwest of W. St. Paul Avenue and W. Sunset Drive 06, 19, 09-3
PSC-2020-028	City of West Allis	Milwaukee	4/29/2020	5/12/2020	West Allis Hotel, (1) Building 07, 21, 34-3 1212 S. 70th Street
PSC-2020-029	Village of Yorkville	Racine	2/26/2020	5/26/2020	Hillwood Speculative, (2) Industrial Buildings 03, 21, 13-4 14015 and 14125 Grandview Parkway West 03, 21, 24-1
PSC-2020-030	Village of Bristol	Kenosha	4/24/2020	5/26/2020	Bristol Highlands Commerce Center 01, 21, 24-2 East of CTH U and 1,000 feet south of CTH C
PSC-2020-031	City of West Bend	Washington	4/24/2020	5/28/2020	South Main Street Property, (8) Multi-family Residential Buildings (25 Total Units) 11, 19, 25-3 East of S. Main Street and Spaeth Street
PSC-2020-032	Village of Brown Deer	Milwaukee	5/18/2020	6/5/2020	"The Learning Experience" Day Care Facility, (1) 1-Story Building 08, 21, 02-1 9325 N. Green Bay Road
PSC-2020-033	Village of Waterford	Racine	6/8/2020	6/16/2020	ADI Business Park, (4) Mini Office/Storage Buildings (19 Total Units) 04, 19, 36-3 West of Milwaukee Avenue (STH 36) and northeast of terminus of Trail View Court
PSC-2020-034	City of Brookfield	Waukesha	6/5/2020	6/16/2020	Grace Landing, (3) 1-Story, Community Based Residential Facility Buildings 07, 20, 15-3 16760 W. North Avenue
PSC-2020-035	City of Racine	Racine	6/12/2020	6/25/2020	Racine Hotel and Convention Center 03, 23, 09-4 Southeast of Lake Avenue and Christopher Columbus Conservancy
PSC-2020-036	City of New Berlin	Waukesha	7/2/2020	7/9/2020	Drexel Building Supply (1) Showroom (Lateral) and (6) Warehouses (No Sewer) 06, 20, 15-2 Northeast of Calhoun and Coffee Roads
PSC-2020-037	City of Oconomowoc	Waukesha	6/17/2020	7/9/2020	Pabst Farms Apartments, (18) Multi-family Buildings, (2) Townhomes, and (1) Clubhouse 07, 17, 10-4 North of Valley Road (CTH B) and Gold Medal Drive 07, 17, 11-3

<b>Number</b>	<b>Civil Division</b>	<b>County</b>	<b>Date Received</b>	<b>Date Answered</b>	<b>Location</b>
PSC-2020-038	City of Port Washington	Ozaukee	7/10/2020	7/17/2020	Prairie's Edge - Ganther, (1) Assisted Senior Living Building 11, 22, 33-2 East of S. Wisconsin Street and 700 feet northeast of Lake Shore Road and S. Wisconsin Street
PSC-2020-039	City of Burlington	Racine	7/13/2020	7/21/2020	Falcon Woods, (4) Multi-family Condominium Buildings (30 Total Units) 03, 19, 29-1 South of Falcon Ridge Drive and 750 feet northwest of Milwaukee Avenue and Falcon Ridge Drive



## Letter Requests

Number of records found: 33.

Number	Civil Division	County	Date Received	Date Answered	Location
<b>SSE Requests</b>					
SSE-001-20	Village of Sussex	Waukesha	12/20/2019	1/9/2020	Maple Avenue Reconstruction Project 08, 19, 14-3 08, 19, 35-2
SSE-002-20	City of Franklin	Milwaukee	12/20/2019	2/20/2020	Franklin Corporate Park, 1,448 Feet of Gravity Sewer in W. Aspen Way 05, 21, 36-3
SSE-003-20	Village of Slinger	Washington	1/2/2020	1/13/2020	Stonefield Terrace Apartments, (10) 8-Unit Residential Buildings 10, 19, 16-4
SSE-004-20	Village of Jackson	Washington	1/13/2020	1/28/2020	1,600 Feet of Gravity Sewer in Spruce Street 10, 20, 20-2
SSE-005-20	City of Port Washington	Ozaukee	1/17/2020	1/28/2020	W. Jefferson Street Reconstruction Project, 248 Feet of Gravity Sewer 11, 22, 21-3
SSE-006-20	City of Glendale	Milwaukee	1/23/2020	1/31/2020	N. Lydell Avenue Reconstruction and Bayshore Mall Redevelopment 08, 22, 29-4
SSE-007-20	City of Oak Creek	Milwaukee	1/30/2020	2/10/2020	Creek Side Crossing Market Place, (2) Gravity Sewers for Future Mixed Use 05, 22, 07-4
SSE-008-20	City of Cedarburg Town of Cedarburg	Ozaukee Ozaukee	1/31/2020	2/10/2020	Webster Avenue, 300' of Gravity Sewer to serve (2) Future Lots 10, 21, 27-3
SSE-009-20	City of Mequon	Ozaukee	2/26/2020	3/9/2020	The Enclave at Mequon Preserve IV, (82) Single-family Lots 09, 21, 28-4
SSE-010-20	Village of Pleasant Prairie	Kenosha	2/24/2020	3/9/2020	Ashbury East Subdivision, (19) Single-family Lots 01, 22, 08-4 01, 22, 17-1
SSE-011-20	Village of Summit	Waukesha	2/25/2020	3/11/2020	Lake Country Village Phases 5 and 6, (46) and (34) Single-family Lots, respectively 07, 17, 14-1
SSE-012-20	Village of Menomonee Falls	Waukesha	2/26/2020	3/13/2020	Highlands at Aero Park, (1) 224-Unit Senior Living Building, (4) 8-Unit Senior-Living Townhomes, and (17) Single-family Lots 08, 20, 32-3
SSE-013-20	Village of Waterford	Racine	3/3/2020	3/24/2020	Assisted Living Condominium Community, (1) Building 04, 19, 25-4
SSE-014-20	City of New Berlin	Waukesha	3/11/2020	5/8/2020	New Berlin South, (1) 4-Story Hotel 06, 20, 27-4

Number	Civil Division	County	Date Received	Date Answered	Location
SSE-015-20	City of Milwaukee	Milwaukee	3/12/2020	3/27/2020	835 Feet of Gravity Sewer Extension in W. Bradley Street 08, 21, 17-2
SSE-016-20	Village of Jackson	Washington	3/11/2020	3/31/2020	Laurel Springs Villas, (9) Multi-family Residential Buildings 10, 20, 07-4
SSE-017-20	City of Port Washington	Ozaukee	3/20/2020	4/10/2020	Park Street Development, (20) Storage Units with 25 total units served by a relocated sewer 11, 22, 32-1
SSE-018-20	Village of Lannon	Waukesha	3/13/2020	4/21/2020	Rock Pointe Village (Phase 1), (1) Amenity Building, (5) Multi-family Residential Buildings, and (1) Private Main for a sewer connection point for future private sewer 08, 20, 17-1
SSE-019-20	Village of Pleasant Prairie	Kenosha	3/17/2020	4/21/2020	715 Feet of Gravity Sewer Relocation in 75th Street 01, 22, 02-3
SSE-020-20	Village of Grafton	Ozaukee	3/18/2020	4/21/2020	Hickory Street Townhouses, (3) Multi-family Residential Buildings 10, 21, 13-4
SSE-021-20	City of Pewaukee	Waukesha	3/19/2020	4/24/2020	The Glen at Parkway Ridge, (1) Clubhouse and (16) Multi-family Condominiums 07, 19, 16-1
SSE-022-20	Town of Delavan	Walworth	4/21/2020	5/6/2020	The Shores of Delavan Lake Phase 1A - Valencia Drive Sewers 02, 16, 15-1 02, 16, 15-4
SSE-023-20	City of Waukesha	Waukesha	4/29/2020	5/22/2020	West Side Pump Station Consolidation Project 07, 19, 31-3 07, 19, 32-4
SSE-024-20	City of West Bend	Washington	4/22/2020	5/15/2020	TIF 14 River Road Utility Extension - Rail Way and River Road Gravity Sewer Extension 11, 20, 31-2 11, 19, 36-1
SSE-025-20	Village of Bristol	Kenosha	4/24/2020	5/26/2020	Bristol Highlands Commerce Center 01, 21, 24-2
SSE-026-20	Village of Jackson	Washington	5/12/2020	6/1/2020	Morning Meadows Subdivision, (89) Single-family Lots 10, 20, 19-3
SSE-027-20	Village of Waterford	Racine	6/8/2020	6/16/2020	ADI Business Park, (4) Mini Office/Storage Buildings - 19 Total Units 04, 19, 36-3
SSE-028-20	Village of Waterford	Racine	5/14/2020	6/11/2020	The Cottages at Waterford Landing, a Single-family Subdivision 03, 19, 02-2
SSE-029-20	City of Brookfield	Waukesha	6/5/2020	6/16/2020	Grace Landing, (3) One-story Community Based Residential Facility Buildings 07, 20, 15-3
SSE-030-20	City of West Bend	Washington	5/5/2020	6/19/2020	TIF 14 - Forge Place Utility and Roadway Extension 11, 20, 31-2 11, 20, 31-3

<b>Number</b>	<b>Civil Division</b>	<b>County</b>	<b>Date Received</b>	<b>Date Answered</b>	<b>Location</b>
SSE-031-20	City of Racine	Racine	6/12/2020	6/25/2020	Racine Hotel and Convention Center 03, 23, 09-4
SSE-032-20	Village of Germantown	Washington	6/1/2020	7/24/2020	Kinderberg Estates, a Single-family Subdivision (16 Lots) 09, 20, 26-3
SSE-033-20	Village of Pleasant Prairie	Kenosha	5/26/2020	7/2/2020	Creekside Terrace, Lots 1 and 40-42 (Single-family) 01, 22, 15-4
SSE-034-20	City of Franklin	Milwaukee	6/16/2020	7/7/2020	Oakes Estates Subdivision, (16) Single-family Lots 05, 21, 09-2
SSE-035-20	City of Oconomowoc	Waukesha	6/17/2020	7/9/2020	Pabst Farms Apartments, (1) Clubhouse, (2) Townhomes, (18) Apartment Buildings 07, 17, 10-4 07, 17, 11-3