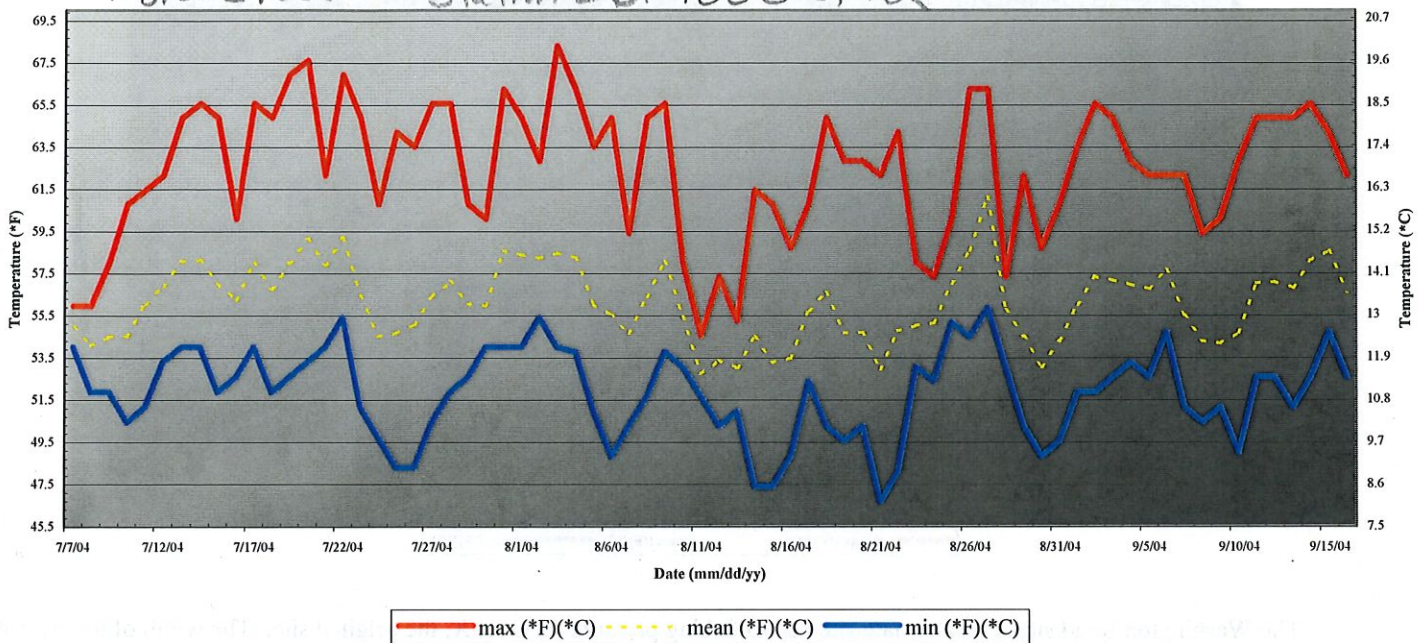


* Entered

Maximum, Mean, and Minimum Temperature Ranges on the Millhome Creek, on Manitowoc & Sheboygan Cty Line, T17N
R21E Sec. 35 SW SE, N43 53' 35.5" W087 57' 03.3"

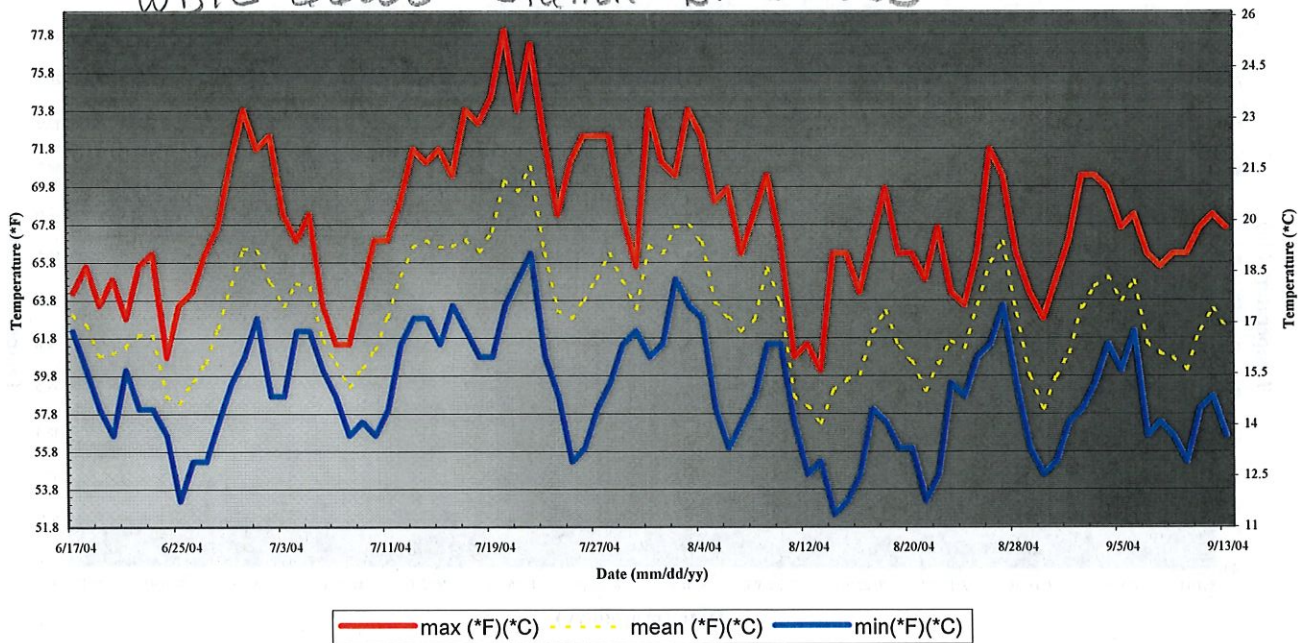
WBIC 57200 Station ID: 10008192



This section of stream averaged 5 to 8 ft. in width. Canopy cover was 100% consisting of Alder and other small shrubs. Average depth ~10 inches. Water color clear. Hard substrate consists of mostly gravel along with cobble and a couple small boulders. Flow moderate. Average high water temp. 62.5 F, average mean water temp. 56.2 F, and average low water temp. 51.9 F.

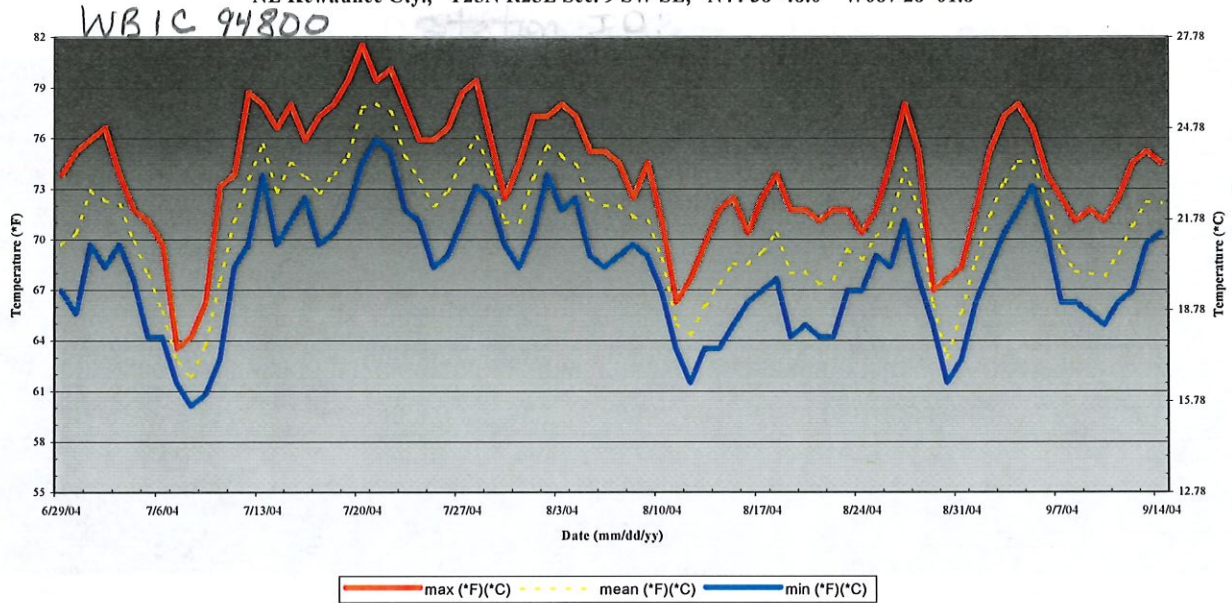
Maximum, Mean, and Minimum Temperature Ranges on Point Creek, SE Manitowoc Cty, T17N R23E
Sec. 4 NW SE, N43 58' 45" W087 45' 32"

WBIC 60600 Station ID: 363333



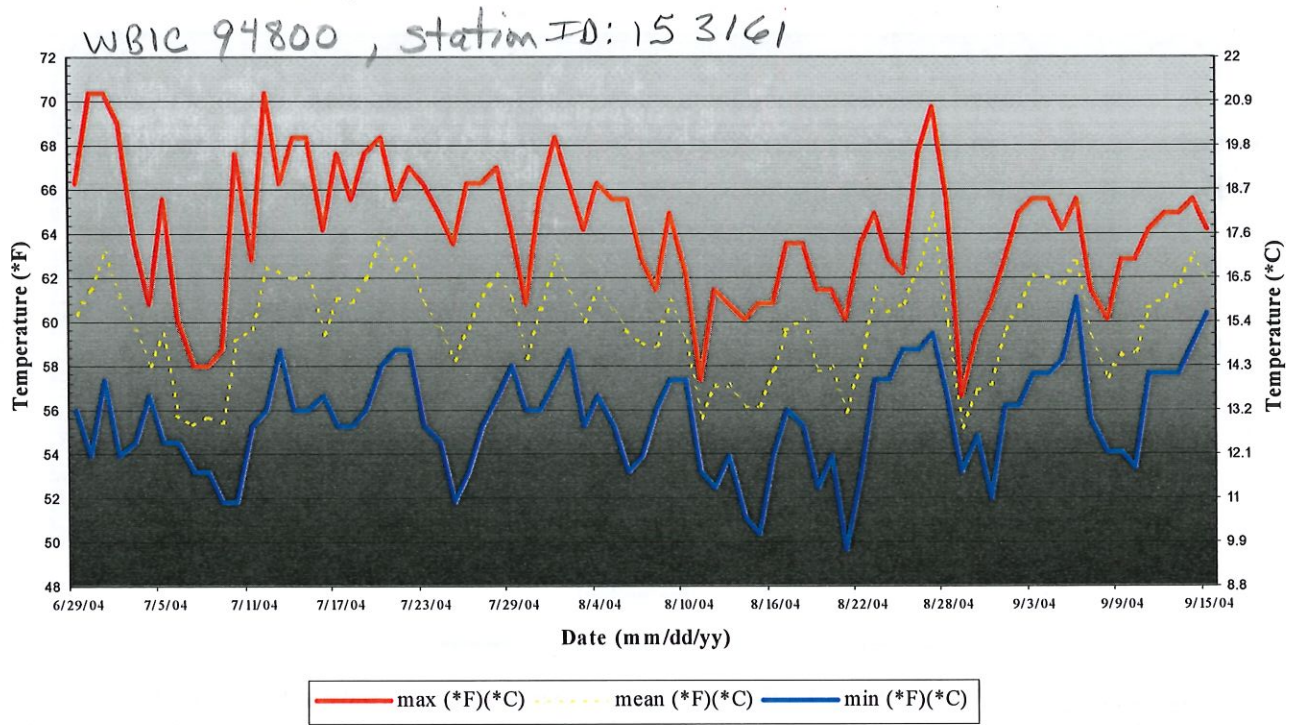
Point creek averaged 14 ft. in width and 2.5 ft. for depth, a low to moderate flow, water color brown, substrate where HOBO was deployed mostly sand with some gravel. Canopy cover ~80%. Natural tall grass growth along the right bank with trees along the left bank. Farm land was adjacent to stream downstream from site. Average high water temp. 67.98 F, average mean water temp. 63.16 F, and average low water temp. 59.2 F.

Maximum, Mean, and Minimum Temperature Ranges on the Ahnapee River off Washington Rd.,
NE Kewaunee Cty., T25N R25E Sec. 9 SW SE, N44 38' 48.0" W087 28' 01.8"



The Washington Road site is an alternate site due to fishing pressure on CTH X, the original site. The width of the river was ~40 ft. The depth where the HOBO was deployed was ~5 ft. with the instrument 1/2 to 3/4 down in that depth. Water color was brown through out the monitoring. Zero % canopy cover. The higher temperature readings are probably due to the lack of shade and low flow. Average high water temp. 73.9 F, average mean water temp. 70.8 F, and average low water temp. 68.5 F.

Maximum, Mean, and Minimum Temperature Ranges on the Ahnapee River; off CTY H, S-Central
Door Cty., T26N R24E Sec. 1 SW SW, N44 44' 52.4" W087 32' 11.7"



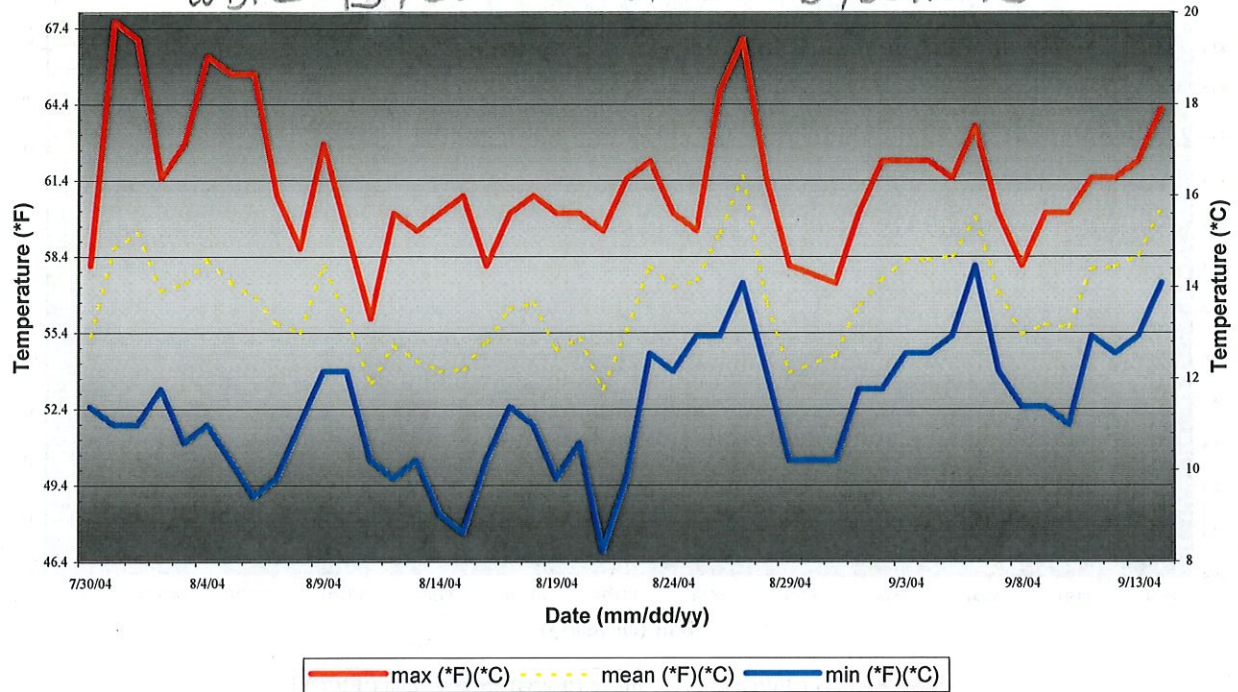
The width of this section of river was ~25 ft. with an average depth of 1.5 ft. The HOBO was deployed in the middle of the river among submersed vegetation. Flow was moderate. Canopy cover was ~20%. A farm crop-field dominated the left bank while shrubs and small trees dominated the right bank. Water temps are lower overall than the downstream site due to increased flow and canopy cover. Average high water temp. 64.15 F, average mean water temp. 59.89 F, and average low water temp. 55.6 F.

Maximum, Mean, and Minimum Temperature Ranges on Silver Creek, Door Cty,
R24E Sec. 2 NE NE, N44 45' 36" W087 32' 23"

T26N

WBIC 95900

station ID 10011693

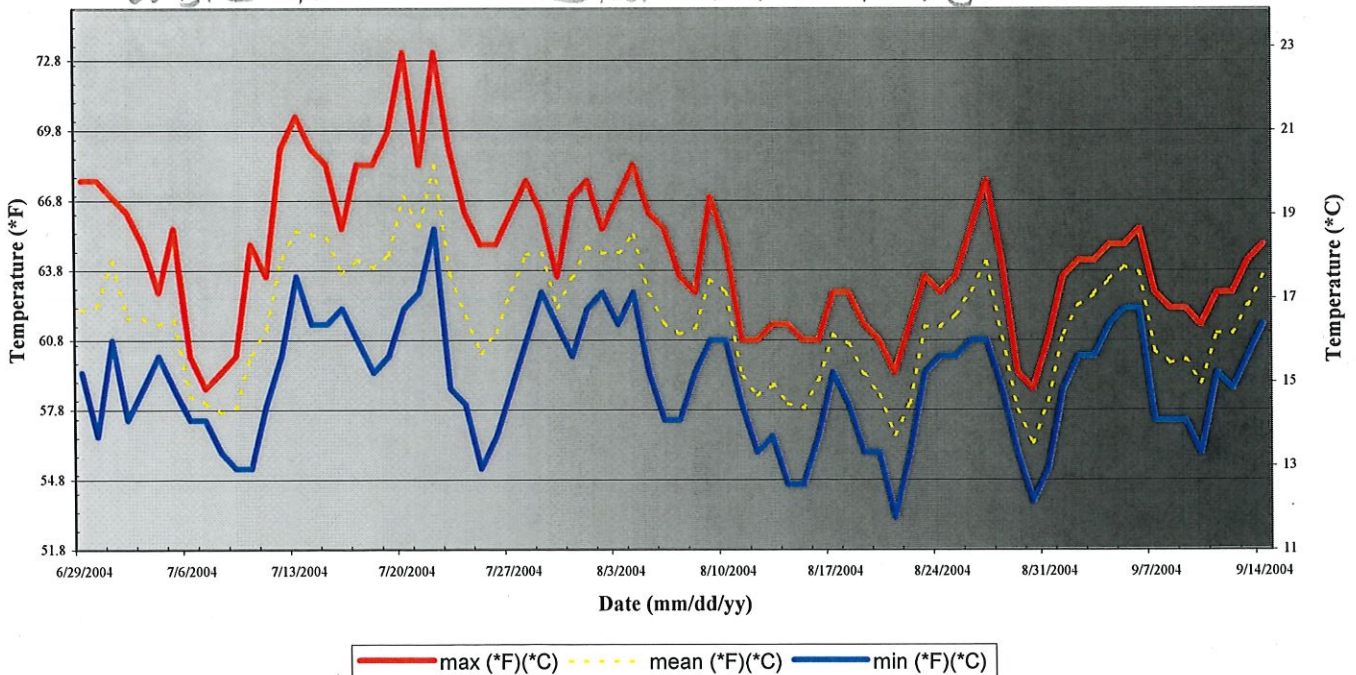


This site was selected to replace the dry site on CHY XC. The flow rate was moderate which suggested that a spring may be present between the two sites which were ~1 mi. apart. The stream width averaged 5 ft. and a depth of 1 ft. Substrate consists of gravel, cobble, and sand. Water color was clear. Canopy cover was 100%. Surrounding area consisted of deciduous trees, tall grass, and wetland. Average high water temp. 61.36 F, average mean water temp. 56.7 F, and average low water temp. 52.6 F.

Maximum, Mean, and Minimum Temperature Ranges on Silver Creek @ Jackson Rd., NE Kewaunee Cty.,
T25N R25E Sec. 1 SE SW, N44 39' 40.0" W087 24' 34.7"

WBIC 96000

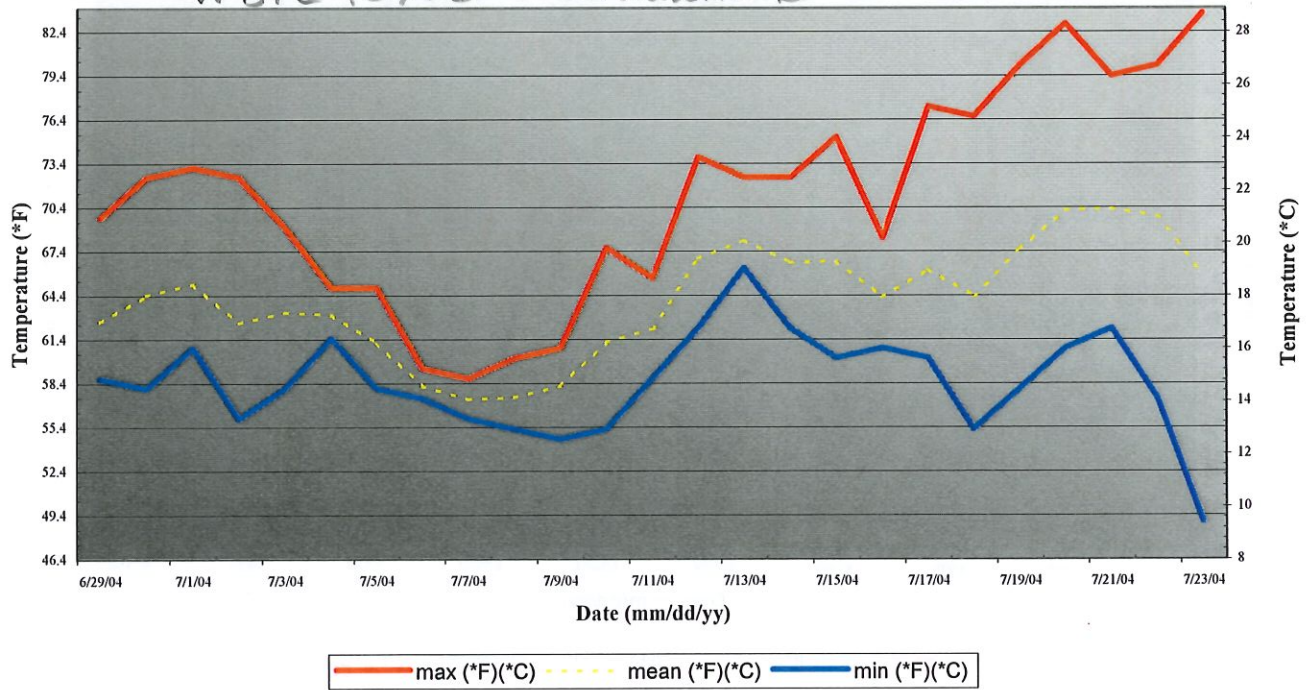
station 10011678



Maximum, Mean, and Minimum Temperature Ranges on the Silver Creek, Door Cty,
 Sec. 10 SE NE, N44 44' 29.5" W087 33' 36"

T26N R24E

WBIC 95900 station ID: None



This site was located next to a culvert on CHY XC, adjacent to a farm field. The stream width was ~2 ft. with a depth of ~10 inches. Canopy cover was 0% and the stream substrate consisted of sand, detritus, some gravel and some emergent vegetation. Both banks were relatively steep. Stream flow was low to stagnant. Water color was clear. HOBO was retrieved on 7.23 where it was observed that the stream had dried up. Based on the temperature data collected, it looks like that may have happened around 7.17. Took HOBO out of the stream and then looked for another suitable site further downstream. The averages between the entire monitoring period and from start to 7.16 seems to be negligible, avg. high of 71.26 F (67.85 F), avg. mean of 64.14 F (62.74), and avg. low of 58.8 F (59.1 F) respectably.

Silver Creek at Jackson Road (previous page), is not the same Silver Creek as in the sites on CHY XC and Stevenson Pier Road. This stream is located in NE Kewaunee Cty and just into Door Cty. The stream flows into Lake Michigan. The site selected is located ~1 mi. from the mouth of the stream. The stream width at site averaged 10 ft. and a depth of 2 ft. Canopy cover was 100%. Stream flow was moderate. Substrate was mostly sand. Both banks consisted of trees and tall grass within ~5 meters. Farm land dominated surrounding area. Average high water temp. 64.6 F, average mean water temp. 62 F, and average low water temp. 59.3 F.

Maximum, Mean, and Minimum Temperature Ranges from the Headwaters of Stony Creek, CTH O, S. Door Cty., T26N R25E
 Sec. 3 NW NE, N44 45' 37.8" W087 26' 53.7"

