

# SOUTHEASTERN WISCONSIN REGIONAL PLANNING COMMISSION

W239 N1812 ROCKWOOD DRIVE • PO BOX 1607 • WAUKESHA, WI 53187-1607 • TELEPHONE (262) 547-6721  
FAX (262) 547-1103

Serving the Counties of:

KENOSHA  
MILWAUKEE  
OZAUKEE  
RACINE  
WALWORTH  
WASHINGTON  
WAUKESHA



January 26, 2021

Mr. Adrian Stocks  
Water Quality Bureau Director  
Wisconsin Department of Natural Resources  
101 South Webster Street  
Madison, WI 53707-7921

Dear Mr. Stocks:

Pursuant to the provisions of the cooperative agreement entered into on July 1, 2020, between the Southeastern Wisconsin Regional Planning Commission and the Wisconsin Department of Natural Resources governing the conduct of continuing areawide water quality management planning in southeastern Wisconsin during 2020, we are providing to you this report of work completed under that agreement for the period from July 1, 2020, through December 31, 2020. The work completed is summarized in the two attached tables.

Table 1 indicates the work products specified to be provided under each work element of the cooperative agreement, as well as a summary listing of the work products completed during the year. Table 2 provides additional detail as to the specific work products completed and indicates the status of the delivery of those work products to you. The tabular data are also being submitted electronically to the Department SWIMS database, as is the agreed-upon procedure.

Should you have any questions concerning this matter, please do not hesitate to contact Laura K. Herrick of the Commission staff directly at (262) 953-3224, or [lherrick@sewrpc.org](mailto:lherrick@sewrpc.org).

Sincerely,

A handwritten signature in black ink, appearing to read "Kevin J. Muhs".

Kevin J. Muhs, PE, AICP  
Executive Director

KJM/LKH/md  
WDNR 2020 2ND HALF WQ PLAN STATUS REPORT (00256211).DOCX

Enclosures

cc: Mr. Tim Asplund, Section Chief, WDNR-Madison  
Ms. Lisa Helmuth, Water Resources Management Specialist, WDNR-Madison  
Ms. Linnea Rock, Water Resources Management Specialist, WDNR-Madison

**Table 1**  
**2020 Continuing Water Quality Planning Program Project Output Summary:**  
**January 1, 2020 Through June 30, 2020**

<b>Work Project and Project Output Anticipated from January 1, Through December 31, 2020, per 2020 Agreement</b>	<b>Project Outputs Completed during January 1, Through December 31, 2020 (see Table 2 for details)</b>
Project 300-1000: Water Quality Management Plan Coordination and Extension of Implementation Activities	
1. Two letter reports or memoranda	1. Five memoranda completed: Powers Lake 2020 Resident Opinion Survey; Aquatic Plant Management Plan Update for the Lauderdale Lakes; A Lake Management Plan for Pewaukee Lake; Big Cedar Lake Watershed Land Use and Pollutant Loading Update; and, Pewaukee Lake Water Level Management and Outlet Dam Operation.
2. Assistance and Data Provision to WDNR, County Land and Water Conservation Committees, and Other Designated Management Agencies for Watershed and other Water Quality-Related WDNR Advisory Committees, Including Statewide Activities	2. <ul style="list-style-type: none"> <li>• Attendance and material review for six meetings of MMSD Technical Advisory Team (TAT)</li> <li>• Continue to serve on the following MMSD project committees:               <ul style="list-style-type: none"> <li>○ Burnham Canal technical stakeholder committee</li> <li>○ Milwaukee River rehabilitation project associated with removal of Estabrook Park dam and falls, along with channel improvements in the general reach</li> </ul> </li> <li>• Continued to participate in the Mukwonago River Initiative and Mukwonago River Fisheries Committee</li> <li>• Continued to provide assistance in the development of the Fox River Water Trail.</li> <li>• Participated as a member of the Root-Pike Watershed Initiative Network (WIN).</li> <li>• Served as members of the Mukwonago River Initiatives Science and Technical Working Group for the proposed water level outlet structure for Booth Lake</li> <li>• Commission staff serves on the Board as a non-voting advisor for the Southeastern Wisconsin Fox River Commission.</li> <li>• Participated in the Southeastern Wisconsin Watersheds Trust, Inc. Commission staff serves on the Board of Directors as a non-voting advisor and on the Science and Policy Committees.</li> <li>• Submitted comments on Chapter NR 193 program guidance that requested clarification on cost containment procedures and how these procedures may affect Regional Planning Commissions.</li> <li>• Provided letters of support to Ozaukee County for various grant initiatives.</li> <li>• Served as a member of the Land and Water Resources Management Plan Technical Advisory Committee for Walworth County</li> </ul>
3. Assistance to 35 Established Waterbody Organizations and Participation with WDNR and Others in Statewide Lake Planning	3. <ul style="list-style-type: none"> <li>• Provided assistance to 25 waterbody organizations. This includes 19 lake-related organizations and 6 river-related organizations.</li> <li>• Assisted 14 Towns and Lake Districts to evaluate issues, address concerns, develop goals, and evaluate execution strategies.</li> <li>• Developed technical scopes of work, budgets, and schedules addressing multiple topics for 6 different lakes.</li> </ul>

**Table 1 (Continued)**

<p><b>Work Project and Project Output Anticipated from January 1, Through December 31, 2020, per 2020 Agreement</b></p>	<p><b>Project Outputs Completed during January 1, Through December 31, 2020 (see Table 2 for details)</b></p>
	<ul style="list-style-type: none"> <li>• Provided major assistance to the Southeast Fox River Partnership in developing, coordinating, and hosting the planned 8th Annual Fox River Summit in 2020. Had to unexpectedly cancel the Summit at the last minute due to complications from COVID-19. Provided assistance to develop an all-virtual Fox River Summit in March 2021 as part of the Wisconsin Water Week Program in collaboration with UW-Extension.</li> </ul>
<p>4. 30 Public Informational Reports or Presentations</p>	<p>4. 10 presentations on water quality issues and/or environmental issues.</p>
<p>5. WDNR-SEWRPC Program Coordination</p>	<p>5. Coordination with WDNR, including contract and work program development, and submittal of work products. Assisted lake and stream groups to better understand grant funding opportunities and changes to Surface Water Grant program with adoption of Chapter NR 193.</p>
<p>6. Attendance at 150 Meetings Related to Water Quality</p>	<p>6. Attended 128 meetings related to water quality planning</p>
<p>7. Special subwatershed or County Land and Water Management Plan assistance</p>	<p>7. Commission staff served on technical advisory committees for Walworth County's and Washington County's Land and Water Resource Management Plans. Many of the activities listed elsewhere in this summary report also relate to land and water resource management in the counties of the Region. See specifically 300-1000, Items 2, 3, and 8 and 300-4000, Item 2</p>
<p>8. Miscellaneous Plan Implementation Activities</p>	<p>8. Maintain permit and data files; provision of information on a walk-in or telephone basis (508 meetings/phone calls/e-mails) (see Project 300-2000, Item 3)</p>
<p>Project 300-2000: Sanitary Sewer Extension Reviews and Assistance</p>	
<p>1. 165 Public and Private Sewer Extension Reviews</p>	<p>1. 105 public and private sewer extension reviews and letter reports</p>
<p>2. 40 Letter Reports Documenting In-Field Delineations of Environmentally Sensitive Lands</p>	<p>2. 14 letter reports</p>
<p>3. 150 Meetings/Phone Calls/E-mails to Review Environmentally Sensitive Areas and Related Matters Concerning Sewer Extensions and Sewer Service Areas</p>	<p>3. About 508 meetings/phone calls/e-mails with landowners, developers, and local officials</p>
<p>Project 300-3000: Sewer Service Area Plan Refinements</p>	
<p>1. One Sewer Service Area Plan</p>	<p>1. One sewer service area plan was completed</p>
<p>2. Revisions to Four Previous Sewer Service Area Plans</p>	<p>2. No amendments to previous sewer service area plans were completed</p>
<p>3. 25 Special Letter Reports on Environmentally Sensitive Areas</p>	<p>3. 29 letter reports</p>
<p>4. Provision of Data for WDNR Environmental Assessments</p>	<p>4. Provision of data for environmental assessments is now routinely provided</p>
<p>5. Meetings and Miscellaneous Activities</p>	<p>5. As needed</p>
<p>6. Development of Procedures for Environmentally Sensitive Lands Recommendations</p>	<p>6. Continued refinement of procedures and provision of additional mapping within each sewer service area</p>
<p>Project 300-4000: Regional Water Quality Management Plan Update</p>	
<p>1. Continue to Support Subregional Plan Amendment Activities</p>	<p>1. No specific work on this task</p>
<p>2. Implementation of the regional water quality management plan update for the greater Milwaukee watersheds</p>	<ul style="list-style-type: none"> <li>• Coordination for the Water Quality Improvement Plan</li> <li>• Continued work on Oak Creek Watershed Restoration Plan</li> </ul>
<p>Project 300-5000: Regional Water Quality Management Plan Update—Groundwater Management Studies</p>	
<p>1. Miscellaneous activities</p>	<ul style="list-style-type: none"> <li>• Provided comments to Village of Somers on their draft Water Supply Service Area Plan.</li> </ul>



**Table 2 (Continued)**

<b>Work Products</b>	<b>Status of Documentation<sup>a</sup></b>
Project 300-2000: Sanitary Sewer Extension Reviews	
1. 51 Public and 54 Private Sewer Extension Reviews (see listings)	3
2. 14 Letter Reports on Field Delineation of Environmentally Sensitive Lands for Sewer Extension Projects	3 (one example provided)
3. About 508 Meetings/Phone Calls/E-mails Related to Environmentally Sensitive Lands Data and Related Matters Concerning Sewer Extensions, Service Areas, and Other Development or Preservation Projects (also relates to Projects 300-1000 and 300-3000)	2
Project 300-3000: Sewer Service Area Plan Refinements	
1. One Sewer Service Area Plan was completed - Yorkville – see link below	4
2. No Amendment Documents for Previous Sewer Service Area Plan (previous efforts can be found at <a href="http://www.sewrpc.org/SEWRPC/LandUse/SanitarySewerandWaterSupplySer.htm">www.sewrpc.org/SEWRPC/LandUse/SanitarySewerandWaterSupplySer.htm</a> )	4
3. 29 Special Letter Reports	3 (one example provided)
4. Provision of Data for Environmental Assessments is Routinely Provided as Part of Submittal to WDNR	2
5. Meetings and Other Miscellaneous Activities	2
6. Procedures for Adding Detail to Sewer Service Area Plans Regarding Environmentally Sensitive Lands Changes Are Incorporated into New Reports and Routine Submittal of Supplementary Data with Report Submittal. Will Continue to Refine Procedure	2
Project 300-4000: Regional Water Quality Management Plan Updating and Extension	
1. Continue to Support Subregional Plan Amendment Activities	--
2. Coordination for the Water Quality Improvement Plan and incorporation of the Milwaukee River Basin TMDL in the Regional Water Quality Management Plan	2
Continued work on the Oak Creek Watershed Restoration Plan (see <a href="http://www.sewrpc.org/SEWRPC/Environment/Restoration-Plan-Oak-Creek-Watershed.htm">www.sewrpc.org/SEWRPC/Environment/Restoration-Plan-Oak-Creek-Watershed.htm</a> )	4
Project 300-5000: Regional Water Quality Management Plan Update—Groundwater Management Studies	
1. Miscellaneous Activities Related to Water Conservation and the Regional Water Supply Plan – provided comments to the Village of Somers for draft Water Supply Service Area Plan	--

<sup>a</sup> Status of documentation Categories:

1—Previously provided to Wisconsin Department of Natural Resources.

2—No specific documentation required.

3—Provided to Wisconsin Department of Natural Resources with this report.

4—See SEWRPC website.

**2020 Lake and River Water Quality Management Activities (300-1000–ITEM 3):  
January 1, 2020 Through December 31, 2020**

<b>Lake or River</b>	<b>Activity</b>
Nagawicka Lake	Continued to refine draft plan while awaiting review and approval by WDNR.
School Section Lake	SEWRPC staff continued to serve on a technical advisory committee to restore the failed dam at the request of Waukesha County. District's WDNR grant application for update to aquatic plant management plan was successful. Arranged fieldwork logistics for inventory of aquatic plant community and purple loosestrife that was completed in late summer 2020.
Silver Lake (Washington County)	Waiting for WDNR feedback to finalize plan. In the interim, continued to refine plan.
Pewaukee Lake	Finalized and published Community Assistance Planning Report 58, 3 <sup>rd</sup> edition, <i>A Lake Management Plan for Pewaukee Lake, Waukesha County, Wisconsin</i> . Completed a staff memorandum report addressing Pewaukee Lake water level management and outlet dam operation to provide technical guidance requested by WDNR and the Lake Pewaukee Sanitary District regarding a water level order revision. This memorandum documented water levels, dam operation procedures, and ice damage to shoreline and also provided examples of operational diagrams that would standardize dam operation and enhance communication of operation to the public. Discussed upcoming development and zoning code changes with the Town of Delafield.
North Lake/Oconomowoc River	SEWRPC staff studied sediment and nutrient sources to the Oconomowoc River upstream of North Lake and completed a preliminary draft Memorandum report to the Lake District Management District and WDNR for their review. Estimated sediment transport and retention within the watershed and refined working draft of forthcoming memorandum report. Met with and advised North Lake Management District on potential management strategies to mitigate pollutant loading to North Lake. Collaborated with North Lake Management District, Terra Vigilis, and Carroll University on proposed fieldwork for pilot study examining water quality and wave action on North Lake. Hosted meeting with aforementioned parties to review preliminary results of pilot study and recommend changes to better address study goals.
Fox (Illinois) River	SEWRPC staff compiled a report detailing streambank erosion assessment and nonpoint source pollutant loading prioritization in the Fox River watershed. This work is based on field inspection of the lower 26 miles (from state line to the Waterford Impoundment). In addition to this data, report includes factors influencing pollutant load and delivery to the river (e.g., watershed size and characteristics).
Southeastern Wisconsin Lakes and Rivers	Presented preliminary findings and significance of chloride study at one regional event: 5 <sup>th</sup> Annual Healthy Lake Conference in Oconomowoc, WI held over Zoom. Hosted first meeting of Aquatic Habitat Subcommittee of the Regional Natural Areas Plan update at SEWRPC office to review proposed elements, data, indices, and data sources for revised aquatic habitat ranking scheme. With assistance from WDNR staff, compiled data on water quality, aquatic plants, fish, mussels, macroinvertebrates, NHI-listed species, and physical characteristics for every stream, river, and lake in the Region in preparation for natural areas ranking scheme revision and application. Served on steering committee for the Ozaukee Treasures Network.
Twin Lakes	Assisted the Village of Twin Lakes, Kenosha County with ice damage and water level complaints. Continue to compile and analyze water level, flow, and rainfall data. Provided ice monitoring calendars to lakeshore residents to assist with data collection efforts. Collected water level and climate data.
Comus Lake/Turtle Creek	Continued collecting water temperature data and compiled water quality, land use, fish, and macroinvertebrate data for Comus Lake and Turtle Creek. Coached District staff on lake user survey and potential approaches to improve the number of survey responses.
Lauderdale Lake Chain	Finalized and published Memorandum Report, No. 143, 3 <sup>rd</sup> Edition, <i>Aquatic Plant Management Plan Update for The Lauderdale Lakes, Walworth County, Wisconsin</i>
Walworth County Lakes	Served on technical advisory committee for Walworth County Land and Water Resource Management Plan.
Milwaukee River Watershed	Assisted Ozaukee County with various stream and natural resource initiatives. Wrote letters of support for various natural-resource grant applications.

**2020 Lake and River Water Quality Management Activities (300-1000-ITEM 3):  
January 1, 2020 Through December 31, 2020 (Continued)**

Lake or River	Activity
Menomonee River and Kinnickinnic River	Continued to serve on the Kinnickinnic River rehabilitation and flood mitigation project stakeholder and team member committee providing advice on MMSD efforts to rehabilitate the stream reaches and improve flood management between S. 6th Street and S. 27th Street and the lower Kinnickinnic River downstream of 6th Street and upstream of the Milwaukee Harbor estuary.
Milwaukee Estuary Area of Concern	SEWRPC staff continued to serve on the Milwaukee Estuary Area of Concern (AOC) Fish and Wildlife Technical Advisory Committee.
Lake Michigan Direct Tributaries	Served as an adviser on Schlitz Audubon Nature Center's Conservation Committee. Major focus has been ravine stabilization.
Powers Lake	Developed scope of work and commenced project to assist District of Powers Lake with Lake resident opinion survey conducted every ten years. Collaborated with District to revise previous survey by addressing novel concerns of Lake residents. Assisted District in preparing and distributing 300 mailed copies of survey to District residents. Completed surveys were mailed to the SEWRPC office in late summer. SEWRPC staff tabulated the results and completed a staff memorandum summarizing the results in fall 2020.
Big Cedar Lake	Completed a staff memorandum report that updated the land use and pollutant loading of the Big Cedar Lake watershed. This update also required an updated watershed delineation to address hydrologic changes within the watershed. Staff memorandum and virtual presentation presented to several stakeholder organizations in June 2020.
Delavan Lake	Presented update on Delavan Lake comprehensive management plan and aquatic plant management plan progress at Town of Delavan Lake Committee meeting. Arranged fieldwork logistics to inventory of aquatic plant community and sediment sampling on Jackson Creek to be conducted in late summer 2020. Designed unmanned aerial vehicle (UAV) survey of Delavan Lake that records numbers, types, and activities of all boats on Lake with 20-minute flights. Assisted Town of Delavan with site selection for evaluation of best management practice efficacy.
Booth Lake	Discussed strategies to evaluate issues influencing water level in a seepage lake and ways that excess water may be controlled. Given the desires, interests, and needs of the group, advised the group that a consultant may better meet their needs.
Geneva Lake	Developed and, based upon Conservancy needs and desires, revised a scope of work and commenced project to examine the water quality and physical characteristics of the Lake's tributary streams and recommend strategies to improve stream conditions. Arranged fieldwork logistics to inventory stream physical characteristics that was conducted in early fall 2020.
Eagle Spring Lake	Developed a scope of work to complete an aquatic plant management inventory and management plan update and coached District on how to prepare grant application with Surface Water Grant program changes under NR 193. Developed a separate scope of work for a comprehensive management plan, including water quality, water levels, groundwater, pollutant loading, boat activity, and fisheries.
Whitewater-Rice Lake	Reviewed unsuccessful WDNR grant application with the District and provided advice on how to improve future applications. Revised scope of work and assisted District with preparations to apply for WDNR grant in 2020 with consideration of changes from NR 193.
Hickory Lake	Discussed dam management concerns with dam owner. Presented an array of management opportunities.
Other	Participated in Statewide programs: SEWRPC staff continued to provide assistance as requested to the Wisconsin Lakes Partnership. SEWRPC staff attended the aquatic plant training webinar hosted by UW-Extension Lakes as well as the virtual Wisconsin Lakes and Rivers Convention.  Worked with the Southeastern Wisconsin Fox River Commission, Southeast Fox River Partnership, and the Fox River Ecosystem Partnership to organize, coordinate, and host the 8th Annual Fox River Summit to continue to bring together watershed organizations in Wisconsin and Illinois for a one-day discussion of common interests and possible opportunities for future cooperation. As previously stated, this Summit had to be canceled at the last minute due to unforeseen complications with COVID-19. Provided assistance to develop an all-virtual 8th Annual Fox River Summit in March 2021 as part of the Wisconsin Water Week Program in collaboration with UW-Extension and the Wisconsin Association of Lakes.





**300-1000**  
**ITEM 4**



**Oak Creek  
Watershed Restoration Plan**

**Stakeholder Group Meeting  
December 9, 2020**

**Speakers:**  
 Laura Herrick, PE, CFM – Chief Environmental Engineer  
 Joseph Boxhorn, Ph.D. – Principal Planner  
 Aaron Owens – Senior Planner

#259041

**Agenda**

- Review Chapter 5, “Watershed Goals and Management Objectives”
- Questions

Serving the Counties of Kenosha, Milwaukee, Ozaukee, Racine, Walworth, Washington, and Waukesha

**Chapter 5  
Watershed Goals and Management Objectives**

**Chapter 5**

- This chapter describes:
  - The goals of the plan
  - Problem/issue statements related to each plan focus area
  - Management objectives related to each goal
    - Includes pollutant load reduction targets for four pollutants


Serving the Counties of Kenosha, Milwaukee, Ozaukee, Racine, Walworth, Washington, and Waukesha

**Goals**

- Plan Goals:
  1. To improve water quality in surface waters of the watershed
  2. To improve instream, riparian, wetland, and upland habitat conditions in the watershed
  3. To reduce the impacts of flooding and stormwater runoff problems at targeted locations in the watershed
  4. To improve recreational access to and use of surface waters and riparian areas in the watershed

Serving the Counties of Kenosha, Milwaukee, Ozaukee, Racine, Walworth, Washington, and Waukesha

**Water Quality Problems Statements and Management Objectives**




## Problems Related to Water Quality

- Chronically high concentrations of fecal indicator bacteria
- Chronically low concentrations of dissolved oxygen at some locations
- Chronically high concentrations of nutrients
  - Total phosphorus often exceeds standards
  - Total nitrogen usually exceeds guidelines
- High concentrations of total suspended solids
- High and increasing concentrations of chloride

7

Serving the Counties of Kenosha, Milwaukee, Ozaukee, Racine, Walworth, Washington, and Waukesha




## Water Quality Management Objectives

1. Sources that contribute sanitary wastewater and other human wastes to surface waters should be located and eliminated
2. Anthropogenic sources that contribute fecal contamination to surface waters should be located and eliminated
3. Non-anthropogenic sources that contribute fecal contamination to surface waters should be located and eliminated
4. Contributions of total suspended solids and sediment to surface waters should be reduced

8

Serving the Counties of Kenosha, Milwaukee, Ozaukee, Racine, Walworth, Washington, and Waukesha




## Water Quality Management Objectives

5. Eroding stream banks along streams of the watershed should be addressed
6. Contributions of organic materials to surface waters should be reduced
7. Contributions of total phosphorus to surface waters should be reduced
8. Contributions of dissolved phosphorus to surface waters should be reduced
9. Contributions of nitrogen compounds including ammonia, nitrate, nitrite, and organic nitrogen compounds to surface waters should be reduced

9

Serving the Counties of Kenosha, Milwaukee, Ozaukee, Racine, Walworth, Washington, and Waukesha




## Water Quality Management Objectives

10. Contributions of chlorides to surface waters and groundwater should be reduced
11. Provision of monitoring data that are adequate to evaluate the state of water quality conditions and the efficacy of management measures on a watershed scale should be continued

10

Serving the Counties of Kenosha, Milwaukee, Ozaukee, Racine, Walworth, Washington, and Waukesha




## Pollutant Load Reduction Targets

- Derived from the modeling for the regional water quality management plan update for the greater Milwaukee watershed (RWQMPU, 2007)
  - Calibrated and validated hydrologic and water quality simulation model
  - The model is briefly described in Appendix L and more fully described in SEWRPC Planning Report No. 50
- The model estimated pollutant loads associated with existing year 2000 conditions and several alternative and planned conditions
- Pollutant loads were estimated for total phosphorus, total suspended solids, fecal coliform bacteria, and total nitrogen

11

Serving the Counties of Kenosha, Milwaukee, Ozaukee, Racine, Walworth, Washington, and Waukesha



## Pollutant Load Reduction Targets

- The model also estimated water quality conditions under the various conditions examined
- The load estimates from the model were used to estimate
  - The load reductions needed to achieve the level of water quality improvement envisioned in the RWQMPU
  - How much of the reductions would be achieved through full implementation of the nonpoint source performance standards set forth in NR 151 of the Wisconsin Administrative Code

12

Serving the Counties of Kenosha, Milwaukee, Ozaukee, Racine, Walworth, Washington, and Waukesha

## Pollutant Load Reduction Targets

- For urban areas, NR 151 required reductions in the amount of suspended solids coming off developed areas
  - Areas of existing development
    - 20 percent reduction by March 10, 2008
    - 40 percent reduction by October 1, 2013
  - Areas of new development – 80 percent reduction
  - Areas of redevelopment – 40 percent reduction
  - Areas of infill development
    - Prior to October 1, 2012 – 40 percent reduction
    - After October 1, 2012 – 80 percent reduction

13

## Pollutant Load Reduction Targets

- Load reduction targets needed to be adjusted to account for the Legislature prohibiting enforcement of the 40 percent TSS reduction requirement for MS4s
  - This adjustment is explained in Appendix L
- Load reduction targets given in Tables 5.2, 5.4, 5.6, 5.9

14

## Pollutant Load Reduction Targets

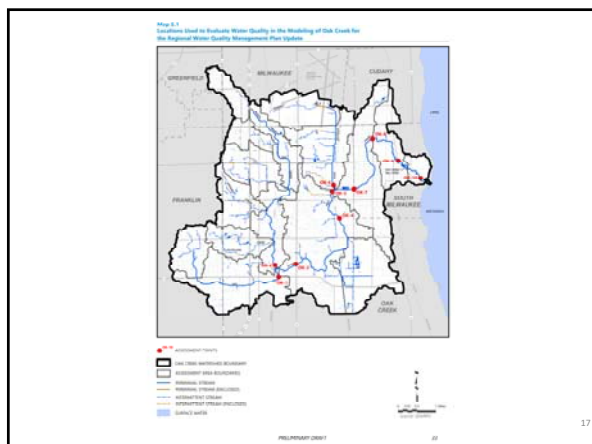
Pollutant	Urban NR 151-Related	Other Urban	Rural NR 151-Related	Other Rural	Total
Total Phosphorus (pounds)	508	1,232	50	240	2,030
Total Suspended Solids (pounds)	659,489	608,051	691,070	9,920	1,986,530
Fecal Coliform Bacteria (trillion cells)	162	1,067	0	67	1,292
Total Nitrogen (pounds)	2,247	5,583	17,180	1,100	26,110

15

## Estimated Water Quality

- Model estimated water quality conditions that would result from achieving the load reductions called for under the RWQMPU
  - Estimated at 10 sites shown on Map 5.1
  - Many of these sites are water quality monitoring stations

16



## Estimated Water Quality

- Estimated improvements in water quality resulting from these pollutant load reductions

Pollutant (mean concentrations)	Existing	Planned
Total Phosphorus (mg/l)	0.084	0.076
Total Suspended Solids (mg/l)	16.4	10.8
Fecal Coliform Bacteria (cells per 100 ml)	7,994	4,427
Total Nitrogen (mg/l)	1.23	0.82

18



## Estimated Water Quality

- The goal of the RWQMPU was to improve water quality
  - While achieving the load reductions called for by the RWQMPU would improve water quality, it probably will not be sufficient to fully achieve compliance with water quality standards
  - Monitoring of water quality, reassessment of compliance with standards, and adjustments of the plan in future editions will be necessary in order to meet water quality standards

19



## Problems Related to Habitat

- Urbanization and prior agricultural development have significantly altered surface and groundwater hydrology contributing to many of the problems summarized below

1891

67  
Years

→

1958

20

## Problems Related to Habitat

- Stream channels throughout the watershed have been highly modified contributing to many of the problems observed in the watershed

22

## Problems Related to Habitat

- Many stream reaches in the watershed have been disconnected from their floodplains. This disconnection confines flow and increases peak flow velocities and volumes, streambank erosion, and the accumulation of sediment

23

## Problems Related to Habitat

- The flashiness of streamflow in the watershed increases erosion of stream beds and banks and reduces the suitability of instream habitat for aquatic organisms

24

**Problems Related to Habitat**

- Excessive streambank erosion is present in some areas of the watershed. This degrades habitat for aquatic organisms and has potential to threaten vital infrastructure

Serving the Counties of Kenosha, Milwaukee, Ozaukee, Racine, Walworth, Washington, and Waukesha

**Problems Related to Habitat**

- Poor diversity of instream habitat in some stream reaches in the watershed limits the quality of aquatic communities

Serving the Counties of Kenosha, Milwaukee, Ozaukee, Racine, Walworth, Washington, and Waukesha

**Problems Related to Habitat**

- The coverage, connectivity, and widths of riparian buffers in the watershed is insufficient to provide good habitat for aquatic and terrestrial organisms and protect water quality

Serving the Counties of Kenosha, Milwaukee, Ozaukee, Racine, Walworth, Washington, and Waukesha

**Problems Related to Habitat**

- Invasive plant and insect species have degraded the quality of waterways, riparian areas, wetlands, and uplands in the watershed

**Problems Related to Habitat**

- Passage impediments such as road crossings, drop structures, large debris jams, and the Mill Pond dam restrict migration of fish and other aquatic organisms throughout the watershed

**Problems Related to Habitat**

- Projections of future conditions indicate that average water temperatures in Oak Creek are likely to increase by about 2°C by the end of the 21<sup>st</sup> century due to climate change, resulting in changes to the biological communities that Oak Creek and its tributaries are able to support

Serving the Counties of Kenosha, Milwaukee



**Problems Related to Habitat**

- Accumulation of trash and debris has degraded the aesthetics of streams and riparian areas and can harm wildlife and aquatic organisms

Serving the Counties of Kenosha, Milwaukee, Ozaukee, Racine, Walworth, Washington, and Waukesha

**Habitat Management Objectives**

- Natural surface water hydrology should be re-established and maintained to the extent practicable.
- Connection between stream channels, floodplains, and adjacent wetland should be re-established.
- Environmentally sensitive areas such as designated Natural Areas, wetlands, and environmental corridors should be protected and preserved.
- Riparian buffer areas should be protected, expanded, restored, and connected to one another.

Serving the Counties of Kenosha, Milwaukee, Ozaukee, Racine, Walworth, Washington, and Waukesha

**Habitat Management Objectives**

- Areas with high groundwater recharge potential should be protected and groundwater contamination should be prevented.
- Instream passage impediments that restrict access of aquatic organisms to a variety of habitats throughout the stream system should be removed or modified to allow passage.
- The diversity and quality of instream habitat should be protected and restored.
- Terrestrial wildlife habitat should be protected, restored, and expanded. Connections among various habitats should be increased.

Serving the Counties of Kenosha, Milwaukee, Ozaukee, Racine, Walworth, Washington, and Waukesha

**Habitat Management Objectives**

- Non-native and invasive species in waterbodies, riparian areas, wetlands, and uplands should be controlled, managed, and/or removed.
- The negative physical, chemical, and biological impacts on aquatic and terrestrial ecosystems that are associated with climate change should be reduced or mitigated.
- Excessively eroding streambanks along streams of the watershed should be addressed.
- Trash and debris within stream channels and riparian areas should be removed.

Serving the Counties of Kenosha, Milwaukee, Ozaukee, Racine, Walworth, Washington, and Waukesha

**Water Quantity Problem Statements and Objectives**

Serving the Counties of Kenosha, Milwaukee, Ozaukee, Racine, Walworth, Washington, and Waukesha

**Problems Related to Flooding**

- There are several remaining insurable structures impacted by the regulatory FEMA flood elevations, and they are scattered through out the Oak Creek watershed.
- Additional stream flooding locations were provided by stakeholders, and these predominantly occur in the lower portions of the Oak Creek mainstem. Impacts included public and private property flooding, flooding at the South Milwaukee High School grounds, and potential impacts to sanitary sewer lift stations in South Milwaukee.

Serving the Counties of Kenosha, Milwaukee, Ozaukee, Racine, Walworth, Washington, and Waukesha



**Problems Related to Flooding**

- There are numerous road crossings impacted by the regulatory FEMA flood elevations for Oak Creek, located predominantly on the mainstem of Oak Creek. Some of these road crossings are overtopped for events as small as the 10-percent-annual-probability (10-year recurrence interval) event.
- Stormwater flooding areas were also provided by stakeholders. These areas were spread throughout the watershed and include streets, public property, and private property.
- Storm event flows of the Oak Creek watershed are flashy due to large amounts of impervious surfaces and the dominance of direct connections from the local storm sewer systems.

Serving the Counties of Kenosha, Milwaukee, Ozaukee, Racine, Walworth, Washington, and Waukesha

**Flooding Management Objectives**

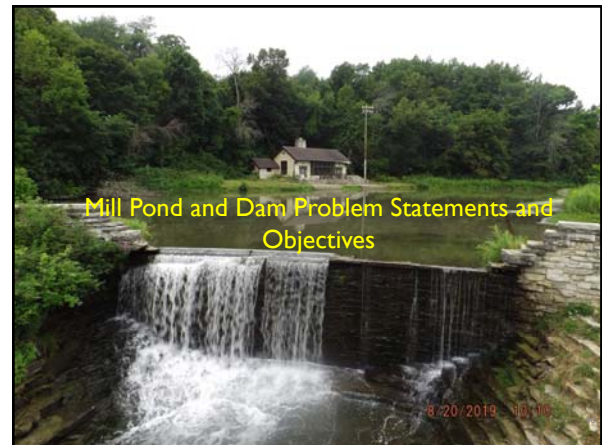
- As opportunities arise, the remaining insurable structures in the regulatory Oak Creek floodplain should be voluntarily acquired and removed
- Public infrastructure and private property should be protected from stream and stormwater flooding
- Road crossings impacted by the regulatory floodplains should be elevated or modified
- Streams in the Oak Creek watershed should be reconnected to their floodplains

Serving the Counties of Kenosha, Milwaukee, Ozaukee, Racine, Walworth, Washington, and Waukesha

**Flooding Management Objectives**

- Riparian buffers should be protected and expanded to allow stream floodwaters to spread out and slow down
- Rainfall runoff should be retained onsite to mitigate stream and stormwater flooding
- Sufficient undeveloped land should be maintained in the watershed for infiltration and flood storage

Serving the Counties of Kenosha, Milwaukee, Ozaukee, Racine, Walworth, Washington, and Waukesha



**Problems Related to Pond and Dam**

- The sluice gate that is required to dewater the pond for dam maintenance is inoperable due to sediment accumulation and lack of regular operation of the gate.
- The Mill Pond was not designed to provide flood storage but for recreational and aesthetic purposes. Under the current configuration of the dam, the regulatory FEMA floodplain indicates that the adjacent Oak Creek Parkway would be flooded during the one-percent-annual-probability event.
- Sediment accumulation in the Mill Pond has become excessive, creating islands in the pond and very shallow water depths that have adversely impacted water quality, habitat, aquatic species, and recreation.

Serving the Counties of Kenosha, Milwaukee, Ozaukee, Racine, Walworth, Washington, and Waukesha

**Problems Related to Pond and Dam**

- The dam is a full barrier to fish and aquatic organism passage between Lake Michigan and the upstream Oak Creek watershed.
- The Mill Pond warming house has not been utilized to its full potential due to diminished recreational opportunities at the pond.

Serving the Counties of Kenosha, Milwaukee, Ozaukee, Racine, Walworth, Washington, and Waukesha

**Dam and Pond Management Objectives**

1. If the dam is not removed, provision should be made for dewatering the pond for dam maintenance
2. If the dam is not removed, an emergency spillway design should be evaluated to improve safety at and downstream of the dam structure and lower flood elevations in the pond area
3. Sediment should be managed more effectively in the Mill Pond area
4. Enhanced recreational opportunities should be provided and maintained in the Mill Pond area

Serving the Counties of Kenosha, Milwaukee, Ozaukee, Racine, Walworth, Washington, and Waukesha

**Dam and Pond Management Objectives**

5. Habitat quality for aquatic and terrestrial wildlife should be improved in the Mill Pond area
6. Aquatic organism passage through the Mill Pond and dam area should be evaluated as a part of potential improvement

Serving the Counties of Kenosha, Milwaukee, Ozaukee, Racine, Walworth, Washington, and Waukesha



**Recreational Access and Use Findings**

1. Major recreational uses of the watershed include walking, hiking, biking, and fishing
2. The public has expressed a desire for improved quality and increased extent of trails within the watershed
3. The Milwaukee County Parks has proposed adding about six miles of trails to the Oak Leaf Trail system within the watershed
4. The public has expressed a desire for educational signage
5. The presence of a poor-quality fishery upstream from the Mill Pond dam

Serving the Counties of Kenosha, Milwaukee, Ozaukee, Racine, Walworth, Washington, and Waukesha

**Recreational Use Management Objectives**

1. Continued development of trails and recreational corridors within the Oak Creek watershed to provide an interconnected trail system that provides access to the streams of the watershed and to local, County, and regional trail systems within adjacent watersheds
2. Improve fishing access along the mainstem of Oak Creek
3. Provision of educational signage along trails within the watershed

Serving the Counties of Kenosha, Milwaukee, Ozaukee, Racine, Walworth, Washington, and Waukesha

**Potential Projects**

**Green infrastructure installation**


**Stormwater ponds**

**Streambank stabilization**

**Illicit Discharge detection and elimination**

**Invasive species management**

Serving the Counties of Kenosha, Milwaukee, Ozaukee, Racine, Walworth, Washington, and Waukesha



## Potential Project Types

- Stormwater ponds
- Floodplain reconnection
- Streambank stabilization
- Remove or modify debris jams
- Remove or modify fish passage impediments
- Targeted illicit discharge detection and elimination
- Stormwater outfall retrofits
- Historical stream channel re-alignments
- Green infrastructure installation, including
  - Permeable pavement (parking lots and alleys)
  - Bioswales
  - Rain gardens
  - Rain barrels
  - Stormwater trees
- Invasive species management
- Establishment, restoration, and connection of riparian buffer areas
- Mill Pond and dam alternatives

49

Serving the Counties of Kenosha, Milwaukee, Ozaukee, Racine, Walworth, Washington, and Waukesha



## Questions

- Questions

50

Serving the Counties of Kenosha, Milwaukee, Ozaukee, Racine, Walworth, Washington, and Waukesha



## Website and Contact Information

- Communication
  - SEWRPC website for Draft documents, meeting materials, and comments
  - [www.sewrpc.org/OakCreekWRP](http://www.sewrpc.org/OakCreekWRP)
- Contact
  - Laura Herrick – Chief Environmental Engineer  
262-953-3224 or [lherrick@sewrpc.org](mailto:lherrick@sewrpc.org)

51

Serving the Counties of Kenosha, Milwaukee, Ozaukee, Racine, Walworth, Washington, and Waukesha



**300-2000**  
**ITEM 1**



## Letter Requests

[-Search options](#)

Number of records found: 54.

Number	Civil Division	County	Date Received	Date Answered	Location
<b>PSC Requests</b>					
PSC-2020-001	City of Greenfield	Milwaukee	1/2/2020	1/9/2020	Greenfield Rehab Hospital 06, 21, 17-2 3200 S. 103rd Street
PSC-2020-002	Village of Slinger	Washington	1/2/2020	1/13/2020	Stonefield Terrace Apartments, (10) 8-Unit Residential Buildings 10, 19, 16-4 750 feet east of American Eagle Drive and Stoney Lane
PSC-2020-003	Village of Saukville	Ozaukee	1/9/2020	1/31/2020	(1) Starbucks 11, 21, 25-4 Southwest of E. Green Bay Avenue and Market Street
PSC-2020-004	Village of Waterford	Racine	1/21/2020	1/28/2020	Deer Trail Condominiums, (2) 8-Unit Multi-family - Buildings No.1 and 2 04, 19, 36-3 East of S. 7th Street and 300 feet south of E. Main Street
PSC-2020-005	Town of Geneva	Walworth	1/17/2020	1/28/2020	Geneva National Condominium No. 59 and No. 61, (6) Buildings 02, 17, 31-2 600 feet southeast of Geneva National Avenue West and Hunt Club Drive
PSC-2020-006	City of Oak Creek	Milwaukee	1/30/2020	2/10/2020	Avid Hotel, (1) Building 05, 22, 19-4 9315 S.13th Street
PSC-2020-007	City of Racine	Racine	2/10/2020	2/18/2020	AJAX II 03, 23, 16-3 North of 16th Street and 100 feet west of Clark Street
PSC-2020-008	City of Racine	Racine	2/10/2020	2/18/2020	16Clark Apartments, (1) Multi-family Building 03, 23, 16-3 Clark Street and 15th Street
PSC-2020-009	City of Franklin	Milwaukee	2/11/2020	2/18/2020	Knollwood Legacy Apartments, (5) 8-Unit Buildings 05, 21, 08-3 7811-7883 S. Scepter Drive
PSC-2020-010	City of Delavan	Walworth	2/5/2020	4/10/2020	The Harbor Club at Lake Lawn 02, 16, 15-3 South of STH 50 and CTH F 02, 16, 22-1
PSC-2020-011	City of Franklin	Milwaukee	2/14/2020	2/20/2020	The Learning Experience, (1) Day Care Facility 05, 21, 08-4 9651 W. Drexel Avenue
PSC-2020-012	City of New Berlin	Waukesha	2/14/2020	2/28/2020	(1) Industrial Building 06, 20, 34-2 South of W. Small Road and 1,000 feet east of W. Sundown Drive 06, 20, 34-3
PSC-2020-013	Village of Pleasant Prairie	Kenosha	2/27/2020	3/5/2020	Lakeview Lot 2, (1) Building 01, 22, 28-2 West of 80th Avenue and 750 feet south of 104th Street
PSC-2020-014	City of Waukesha	Waukesha	2/26/2020	3/5/2020	(1) Kwik Trip Convenience Store 07, 19, 34-1 1700 Pewaukee Road
PSC-2020-015	City of Waukesha	Waukesha	2/26/2020	3/5/2020	(1) Kwik Trip Convenience Store/Car Wash 06, 19, 15-4 West of S. West Avenue and Travis Lane
PSC-2020-016	City of Oak Creek	Milwaukee	3/4/2020	3/13/2020	Milwaukee Yard, (1) Indoor Sports Complex Building 05, 22, 07-4 East of I-94/I-41 and 1,000 feet north of W. Drexel Avenue
PSC-2020-017	Village of Waterford	Racine	3/3/2020	3/24/2020	Assisted Living Condominium Community, (1) Building and (1) Future Development 04, 19, 25-4 North of Apple Road (STH 164) and 200 feet east of Cornerstone Crossing
PSC-2020-018	Village of Pleasant Prairie	Kenosha	3/9/2020	3/24/2020	Crown Development, (1) Industrial Building 01, 22, 28-2 Southeast of 86th Avenue and Lakeview Parkway

Number	Civil Division	County	Date Received	Date Answered	Location
PSC-2020-019	City of Kenosha	Kenosha	3/4/2020	3/24/2020	Old Dominion, (1) Industrial Building 01, 22, 04-1 6824 77th Avenue and Lakeview Parkway/104th Street/STH 165 01, 22, 04-4
PSC-2020-020	City of New Berlin	Waukesha	3/11/2020	5/8/2020	New Berlin South, (1) 4-Story Hotel 06, 20, 27-4 5295 S. Moorland Road (CTH O)
PSC-2020-021	City of Port Washington	Ozaukee	3/20/2020	4/10/2020	Park Street Development, (20) Storage Units - only two separate units are served by sewer 11, 22, 32-1 723 Schmitz Drive
PSC-2020-022	Village of Lannon	Waukesha	3/13/2020	4/21/2020	Rock Point Village (Phase I), (1) Amenity Building, (5) Multi-family Residential Buildings, and (1) private main to serve as a future private sewer connection point 08, 20, 17-1 Northeast of Main Street (CTH F) and proposed Rock Pointe Way
PSC-2020-023	Village of Grafton	Ozaukee	3/18/2020	4/21/2020	Hickory Street Townhouses, (3) Multi-family Buildings 10, 21, 13-4 Southwest of Green Bay Road (CTH O) and Hickory Street
PSC-2020-024	City of Brookfield	Waukesha	3/19/2020	4/30/2020	The Corridor, (1) 2-Story and (1) 6-Story Office Building 07, 20, 33-1 South of Golf Parkway and 500 feet west of S. Calhoun Road
PSC-2020-025	City of Kenosha	Kenosha	4/7/2020	4/30/2020	ULINE-W8 Distribution Center, (1) Building 02, 21, 24-4 Southeast of 128th Avenue and Burlington Road (STH 142) 02, 21, 25-1
PSC-2020-026	City of Elkhorn	Walworth	4/16/2020	4/30/2020	(1) Municipal Administration Building 02, 17, 07-2 Southeast of north cul-de-sac of Seymour Court and 500 feet north of Commerce Court
PSC-2020-027	City of Waukesha	Waukesha	5/4/2020	5/8/2020	Fox Run Shopping Center Redevelopment, (1) Micro Hospital, (1) Existing Bank, (1) Bank, and (3) Multi-family Apartment Buildings (74 Total Units) 06, 19, 08-4 Northwest of W. St. Paul Avenue and W. Sunset Drive 06, 19, 09-3
PSC-2020-028	City of West Allis	Milwaukee	4/29/2020	5/12/2020	West Allis Hotel, (1) Building 07, 21, 34-3 1212 S. 70th Street
PSC-2020-029	Village of Yorkville	Racine	2/26/2020	5/26/2020	Hillwood Speculative, (2) Industrial Buildings 03, 21, 13-4 14015 and 14125 Grandview Parkway West 03, 21, 24-1
PSC-2020-030	Village of Bristol	Kenosha	4/24/2020	5/26/2020	Bristol Highlands Commerce Center 01, 21, 24-2 East of CTH U and 1,000 feet south of CTH C
PSC-2020-031	City of West Bend	Washington	4/24/2020	5/28/2020	South Main Street Property, (8) Multi-family Residential Buildings (25 Total Units) 11, 19, 25-3 East of S. Main Street and Spaeth Street
PSC-2020-032	Village of Brown Deer	Milwaukee	5/18/2020	6/5/2020	"The Learning Experience" Day Care Facility, (1) 1-Story Building 08, 21, 02-1 9325 N. Green Bay Road
PSC-2020-033	Village of Waterford	Racine	6/8/2020	6/16/2020	ADI Business Park, (4) Mini Office/Storage Buildings (19 Total Units) 04, 19, 36-3 West of Milwaukee Avenue (STH 36) and northeast of terminus of Trail View Court
PSC-2020-034	City of Brookfield	Waukesha	6/5/2020	6/16/2020	Grace Landing, (3) 1-Story, Community Based Residential Facility Buildings 07, 20, 15-3 16760 W. North Avenue
PSC-2020-035	City of Racine	Racine	6/12/2020	6/25/2020	Racine Hotel and Convention Center 03, 23, 09-4 Southeast of Lake Avenue and Christopher Columbus Causeway
PSC-2020-036	City of New Berlin	Waukesha	7/2/2020	7/9/2020	Drexel Building Supply (1) Showroom (Lateral) and (6) Warehouses (No Sewer) 06, 20, 15-2 Northeast of Calhoun and Coffee Roads (Original request 06/10/2020. Revised request submitted 07/02/2020)
PSC-2020-037	City of Oconomowoc	Waukesha	6/17/2020	7/9/2020	Pabst Farms Apartments, (18) Multi-family Buildings, (2) Townhomes, and (1) Clubhouse 07, 17, 10-4 North of Valley Road (CTH B) and Gold Medal Drive 07, 17, 11-3



Number	Civil Division	County	Date Received	Date Answered	Location
PSC-2020-038	City of Port Washington	Ozaukee	7/10/2020	7/17/2020	Prairie's Edge - Ganther, (1) Assisted Senior Living Building 11, 22, 33-2 East of S. Wisconsin Street and 700 feet northeast of Lake Shore Road and S. Wisconsin Street
PSC-2020-039	City of Burlington	Racine	9/17/2020	9/29/2020	Falcon Woods, (4) Multi-family Condominium Buildings (30 Total Units) 03, 19, 29-1 South of Falcon Ridge Drive and 750 feet northwest of Milwaukee Avenue and Falcon Ridge Drive <b>(Original request of 07/13/2020 (answered 07/21/2020) was revised to include public sewer extension SSE 042-20.)</b>
PSC-2020-040	Village of Hartland	Waukesha	7/28/2020	9/8/2020	Lake Country Lutheran - North, (47) Single-family Condominium Lots 08, 18, 34-3 East of Compass Drive and 750 feet northwest of Hickory Court and Willow Drive
PSC-2020-041	City of West Allis	Milwaukee	8/19/2020	8/21/2020	Aspen Dental, (1) Building 06, 21, 08-3 10707 W. Cleveland Avenue
PSC-2020-042	Village of Menomonee Falls Village of Germantown	Waukesha Washington	8/31/2020	9/15/2020	Sewer realignment for (1) proposed Chick-Fil A and (4) developed Commercial Lots 08, 20, 04-2 South of County Line Road between Appleton Avenue and Maple Road
PSC-2020-043	Village of Summit	Waukesha	9/10/2020	9/22/2020	Rogers Memorial Hospital - Family Research Center and (1) future 24-bed Community Based Residential Residential Facility 07, 17, 12-2 34700 Valley Road
PSC-2020-044	City of Waukesha	Waukesha	9/15/2020	10/1/2020	Eaton, (1) Manufacturing Building Addition - South 06, 19, 08-4 2300 Badger Drive
PSC-2020-045	Village of Salem	Kenosha	9/18/2020	10/1/2020	R+D Custom Automation, (1) Building 01, 20, 27-1 Northwest of 250th Avenue, 254th Court, and Joe Meier Parkway 01, 20, 27-4
PSC-2020-046	City of Kenosha	Kenosha	9/23/2020	10/9/2020	Heartland Produce, (1) Building 02, 22, 31-4 West of 104th Avenue and 58th Place
PSC-2020-047	City of Kenosha	Kenosha	9/4/2020	10/9/2020	U.S. Customs Facility, (1) Building 02, 22, 32-2 9900 52nd Street
PSC-2020-048	City of Greenfield	Milwaukee	10/5/2020	10/9/2020	Educator's Credit Union, (1) Drive-Thru Building 06, 21, 24-3 4000 W. Loomis Road
PSC-2020-049	Village of East Troy	Walworth	9/17/2020	10/13/2020	The Lofts of East Troy, (3) Multi-family Apartments and (1) Outbuilding 04, 18, 32-2 South of Honey Creek Road and 300 feet east of Honey Creek Court
PSC-2020-050	City of Kenosha	Kenosha	10/1/2020	10/15/2020	Logistics Park Phase III, Buildings 6 and 7 02, 21, 25-4 East of 128th Avenue and south of CTH N/38th Street
PSC-2020-051	Village of Brown Deer	Milwaukee	10/8/2020	10/20/2020	Brown Deer Apartments, (2) Multi-family Buildings 08, 21, 11-1 8718 N. 43rd Street
PSC-2020-052	City of Kenosha	Kenosha	10/12/2020	10/23/2020	KJS C-Store (Amoco Gas Station) 01, 22, 12-3 Northeast of 39th Avenue and 85th Street
PSC-2020-053	Village of Hartland	Waukesha	11/18/2020	12/15/2020	Lake Country Lutheran - South - Catalyst Hartland Apartments, (1) Amenity Building and (6) Multi-family 08, 18, 34-3 Southeast of Campus Drive and Scenic Road
PSC-2020-054	Village of Union Grove	Racine	11/25/2020	12/18/2020	Canopy Hill, (3) 20-Unit Multi-family, (4) Ranch Condominium Duplexes, (33) 2-Story Townhomes, and (1) Existing Church with Patronage Building 03, 21, 19-4 West of 58th Road and York Street 03, 21, 30-1

## Letter Requests

[-Search options](#)

Number of records found: 51.

Number	Civil Division	County	Date Received	Date Answered	Location
<b>SSE Requests</b>					
SSE-001-20	Village of Sussex	Waukesha	12/20/2019	1/9/2020	Maple Avenue Reconstruction Project 08, 19, 14-3 08, 19, 35-2
SSE-002-20	City of Franklin	Milwaukee	12/20/2019	2/20/2020	Franklin Corporate Park, 1,448 Feet of Gravity Sewer in W. Aspen Way 05, 21, 36-3
SSE-003-20	Village of Slinger	Washington	1/2/2020	1/13/2020	Stonefield Terrace Apartments, (10) 8-Unit Residential Buildings 10, 19, 16-4
SSE-004-20	Village of Jackson	Washington	1/13/2020	1/28/2020	1,600 Feet of Gravity Sewer in Spruce Street 10, 20, 20-2
SSE-005-20	City of Port Washington	Ozaukee	1/17/2020	1/28/2020	W. Jefferson Street Reconstruction Project, 248 Feet of Gravity Sewer Extension 11, 22, 21-3
SSE-006-20	City of Glendale	Milwaukee	1/23/2020	1/31/2020	N. Lydell Avenue Reconstruction and Bayshore Mall Redevelopment 08, 22, 29-4
SSE-007-20	City of Oak Creek	Milwaukee	1/30/2020	2/10/2020	Creek Side Crossing Market Place, (2) Gravity Sewers for Future Mixed Use 05, 22, 07-4
SSE-008-20	City of Cedarburg Town of Cedarburg	Ozaukee Ozaukee	1/31/2020	2/10/2020	Webster Avenue, 300' of Gravity Sewer to serve (2) Future Lots 10, 21, 27-3
SSE-009-20	City of Mequon	Ozaukee	2/26/2020	3/9/2020	The Enclave at Mequon Preserve IV, (82) Single-family Lots 09, 21, 28-4
SSE-010-20	Village of Pleasant Prairie	Kenosha	2/24/2020	3/9/2020	Ashbury East Subdivision, (19) Single-family Lots 01, 22, 08-4 01, 22, 17-1
SSE-011-20	Village of Summit	Waukesha	2/25/2020	3/11/2020	Lake Country Village Phases 5 and 6, (46) and (34) Single-family Lots, respectively 07, 17, 14-1
SSE-012-20	Village of Menomonee Falls	Waukesha	2/26/2020	3/13/2020	Highlands at Aero Park, (1) 224-Unit Senior Living Building, (4) 8-Unit Senior-Living Townhomes, and (17) Single-family Lots 08, 20, 32-3
SSE-013-20	Village of Waterford	Racine	3/3/2020	3/24/2020	Assisted Living Condominium Community, (1) Building 04, 19, 25-4
SSE-014-20	City of New Berlin	Waukesha	3/11/2020	5/8/2020	New Berlin South, (1) 4-Story Hotel 06, 20, 27-4
SSE-015-20	City of Milwaukee	Milwaukee	3/12/2020	3/27/2020	835 Feet of Gravity Sewer Extension in W. Bradley Street 08, 21, 17-2
SSE-016-20	Village of Jackson	Washington	3/11/2020	3/31/2020	Laurel Springs Villas, (9) Multi-family Residential Buildings 10, 20, 07-4
SSE-017-20	City of Port Washington	Ozaukee	3/20/2020	4/10/2020	Park Street Development, (20) Storage Units with 25 total units served by a relocated sewer 11, 22, 32-1
SSE-018-20	Village of Lannon	Waukesha	3/13/2020	4/21/2020	Rock Pointe Village (Phase 1), (1) Amenity Building, (5) Multi-family Residential Buildings, and (1) Private Main for a sewer connection point for future private sewer 08, 20, 17-1
SSE-019-20	Village of Pleasant Prairie	Kenosha	3/17/2020	4/21/2020	715 Feet of Gravity Sewer Relocation in 75th Street 01, 22, 02-3
SSE-020-20	Village of Grafton	Ozaukee	3/18/2020	4/21/2020	Hickory Street Townhouses, (3) Multi-family Residential Buildings 10, 21, 13-4
SSE-021-20	City of Pewaukee	Waukesha	3/19/2020	4/24/2020	The Glen at Parkway Ridge, (1) Clubhouse and (16) Multi-family Condominiums 07, 19, 16-1
SSE-022-20	Town of Delavan	Walworth	4/21/2020	5/6/2020	The Shores of Delavan Lake Phase 1A - Valencia Drive Sewers 02, 16, 15-1 02, 16, 15-4
SSE-023-20	City of Waukesha	Waukesha	4/29/2020	5/22/2020	West Side Pump Station Consolidation Project 07, 19, 31-3 07, 19, 32-4

Number	Civil Division	County	Date Received	Date Answered	Location
SSE-024-20	City of West Bend	Washington	4/22/2020	5/15/2020	TIF 14 River Road Utility Extension - Rail Way and River Road Gravity Sewer Extension 11, 20, 31-2 11, 19, 36-1
SSE-025-20	Village of Bristol	Kenosha	4/24/2020	5/26/2020	Bristol Highlands Commerce Center 01, 21, 24-2
SSE-026-20	Village of Jackson	Washington	5/12/2020	6/1/2020	Morning Meadows Subdivision, (89) Single-family Lots 10, 20, 19-3
SSE-027-20	Village of Waterford	Racine	6/8/2020	6/16/2020	ADI Business Park, (4) Mini Office/Storage Buildings - 19 Total Units 04, 19, 36-3
SSE-028-20	Village of Waterford	Racine	5/14/2020	6/11/2020	The Cottages at Waterford Landing, a Single-family Subdivision 03, 19, 02-2
SSE-029-20	City of Brookfield	Waukesha	6/5/2020	6/16/2020	Grace Landing, (3) One-story Community Based Residential Facility Buildings 07, 20, 15-3
SSE-030-20	City of West Bend	Washington	5/5/2020	6/19/2020	TIF 14 - Forge Place Utility and Roadway Extension 11, 20, 31-2 11, 20, 31-3
SSE-031-20	City of Racine	Racine	6/12/2020	6/25/2020	Racine Hotel and Convention Center 03, 23, 09-4
SSE-032-20	Village of Germantown	Washington	6/1/2020	7/23/2020	Kinderberg Estates, Single-family Subdivision (16 Lots) 09, 20, 26-3
SSE-033-20	Village of Pleasant Prairie	Kenosha	5/26/2020	7/2/2020	Creekside Terrace, Lots 1 and 40-42 (Single-family) 01, 22, 15-4
SSE-034-20	City of Franklin	Milwaukee	6/16/2020	7/7/2020	Oakes Estates Subdivision, (16) Single-family Lots 05, 21, 09-2
SSE-035-20	City of Oconomowoc	Waukesha	6/17/2020	7/9/2020	Pabst Farms Apartments, (1) Clubhouse, (2) Townhomes, (18) Apartment Buildings 07, 17, 10-4 07, 17, 11-3
SSE-036-20	City of Pewaukee	Waukesha	3/16/2020	8/11/2020	Shady Lane and Shady Nook Gravity Sewer Extensions 07, 19, 12-4
SSE-037-20	Village of Somers	Kenosha	8/5/2020	8/28/2020	100th Avenue Gravity Sewer Extension 02, 22, 17-2
SSE-038-20	Town of Norway	Racine	8/5/2020	9/15/2020	Lift Station No. 3 and 6 replacement and Forcemain/Sewer Extensions 04, 20, 08-1
SSE-039-20	Village of Menomonee Falls Village of Germantown	Waukesha Washington	8/31/2020	9/15/2020	Germantown Sewer Realignment to Menomonee Falls Public Sewer extension, (4) Existing Commercial Lots and (1) proposed Chick-Fil-A 08, 20, 04-2
SSE-040-20	City of New Berlin	Waukesha	9/1/2020	9/3/2020	Parking Lot Redevelopment, First Phase, (2) Buildings 06, 20, 14-3
SSE-041-20	Village of Pleasant Prairie	Kenosha	8/27/2020	9/29/2020	Primrose of Pleasant Prairie, (12) Villas, (1) Clubhouse, (1) 57-Bed Assisted Living/34-Bed Memory Care 01, 22, 27-1 01, 22, 27-2
SSE-042-20	City of Burlington	Racine	9/17/2020	9/29/2020	Falcon Woods, (4) Multi-family Condominium Buildings (30 Total Units) 03, 19, 29-1
SSE-043-20	City of Kenosha	Kenosha	9/4/2020	10/9/2020	Kenosha Regional Airport, U.S. Customs Building 02, 22, 32-2
SSE-044-20	City of Cedarburg	Ozaukee	10/1/2020	10/9/2020	Cedarburg Business Park, (6) Lots 10, 21, 22-1
SSE-045-20	Village of East Troy	Walworth	9/17/2020	10/13/2020	The Lofts of East Troy, (3) Multi-family Apartment Buildings and (1) Maintenance Building 04, 18, 32-2
SSE-046-20	Village of Brown Deer	Milwaukee	10/8/2020	10/20/2020	Brown Deer Apartments, (2) Multi-family Buildings 08, 21, 11-1
SSE-047-20	Village of Waterford	Racine	11/5/2020	12/1/2020	7 Waters Condominiums (20) 2-Unit Buildings (Units 1-40) 04, 19, 35-4 04, 19, 36-3
SSE-048-20	Village of Lannon	Waukesha	12/3/2020	12/15/2020	Custer Lane Lift Station and Forcemain (Part of Rock Pointe Village) 08, 20, 17-1 <b>(Part of SSE 018-20)</b>
SSE-049-20	City of Kenosha	Kenosha	4/21/2020	12/8/2020	KAT Subdivision, Lots 11-40 and 54-109 (Formerly Grandview Meadows) 02, 22, 25-3
SSE-050-20	Village of Union Grove	Racine	11/25/2020	12/18/2020	Canopy Hill, Lots 1-188, a residential development 03, 21, 19-4 03, 21, 30-1

<b>Number</b>	<b>Civil Division</b>	<b>County</b>	<b>Date Received</b>	<b>Date Answered</b>	<b>Location</b>
SSE-051-20	Town of Addison	Washington	11/30/2020	12/22/2020	CTH W Reconstruction, 1,362 feet of gravity sewer 11, 18, 16-1 11, 18, 16-4