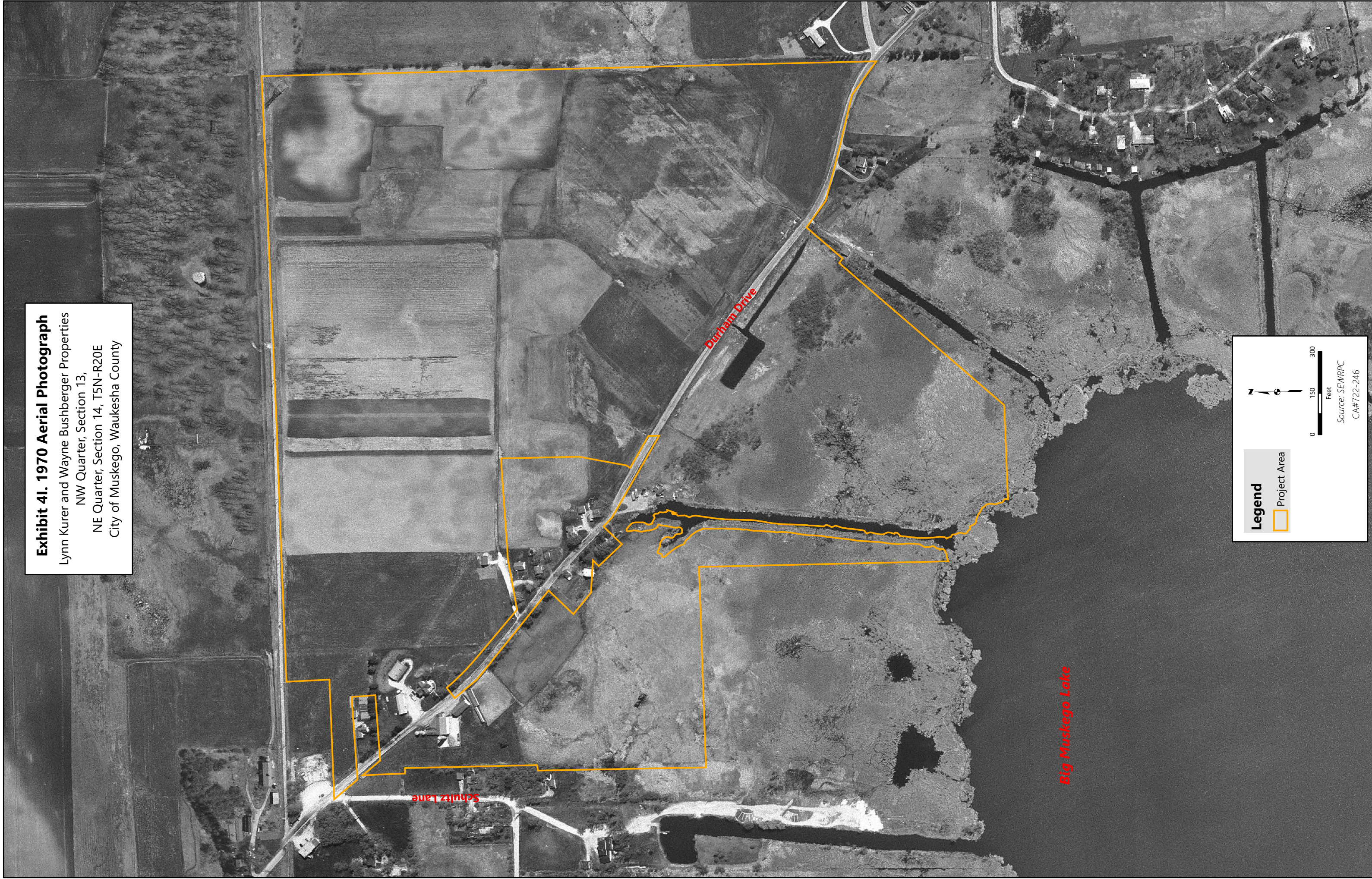


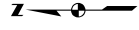
Exhibit 4I. 1970 Aerial Photograph

Lynn Kurer and Wayne Bushberger Properties
NW Quarter, Section 13,
NE Quarter, Section 14, T5N-R20E
City of Muskego, Waukesha County



Legend

Project Area



0 150 300
Feet

Source: SEWRPC
CA#722-246

Exhibit 4J. 1963 Aerial Photograph

Lynn Kurer and Wayne Bushberger Properties
NW Quarter, Section 13,
NE Quarter, Section 14, T5N-R20E
City of Muskego, Waukesha County



Legend

Project Area



0 150 300
Feet

Source: SEWRPC
CA#722-246

Exhibit 4K. 1950 Aerial Photograph

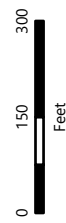
Lynn Kurer and Wayne Bushberger Properties
NW Quarter, Section 13,
NE Quarter, Section 14, T5N-R20E
City of Muskego, Waukesha County



Legend

Project Area

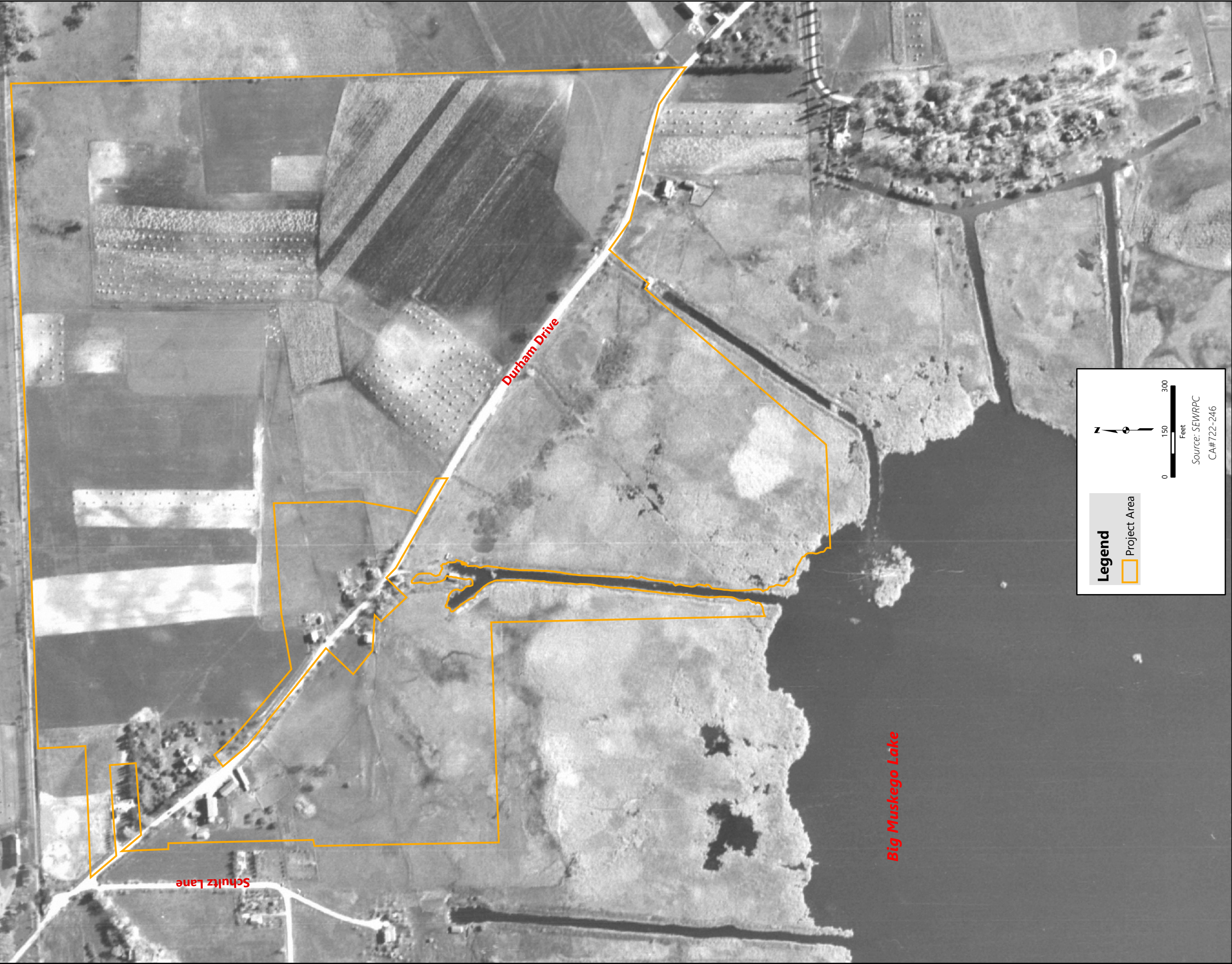
N



Source: SEWRPC
CA#722-246

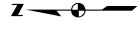
Exhibit 4L. 1941 Aerial Photograph

Lynn Kurer and Wayne Bushberger Properties
NW Quarter, Section 13,
NE Quarter, Section 14, T5N-R20E
City of Muskego, Waukesha County



Legend

Project Area



0 150 300
Feet

Source: SEWRPC
CA#722-246

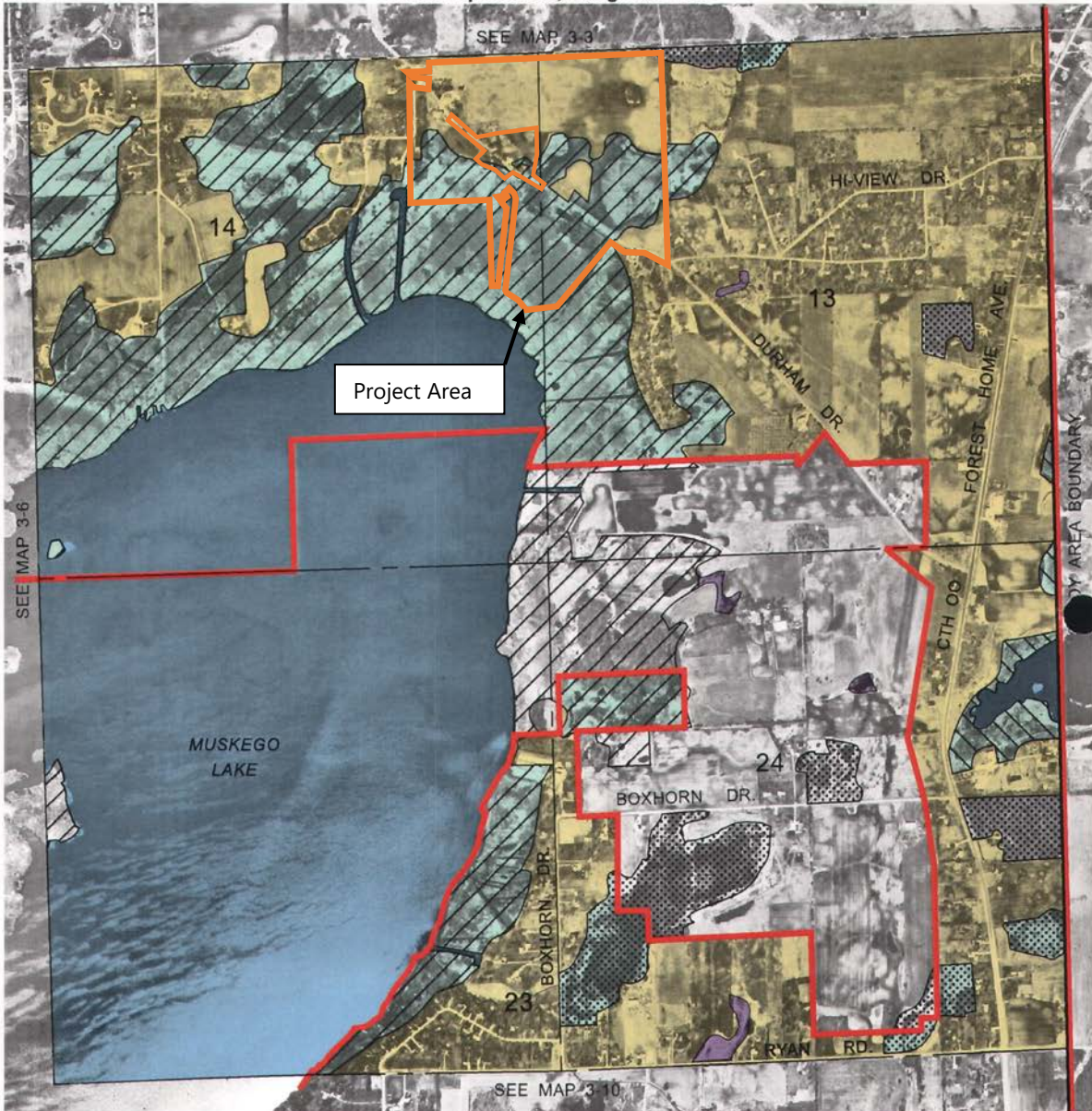
Exhibit 5. Sanitary Sewer Service Map

Lynn Kurer and Wayne Bushberger Properties
 NW Quarter, Section 13, NE Quarter, Section 14, T5N-R20E
 City of Muskego, Waukesha County

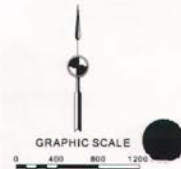
Map 3-7

ENVIRONMENTALLY SIGNIFICANT LANDS AND PLANNED SANITARY SEWER SERVICE AREA FOR THE CITY OF MUSKEGO

U. S. Public Land Survey Sections 13, 14, 23, and 24
 Township 5 North, Range 20 East



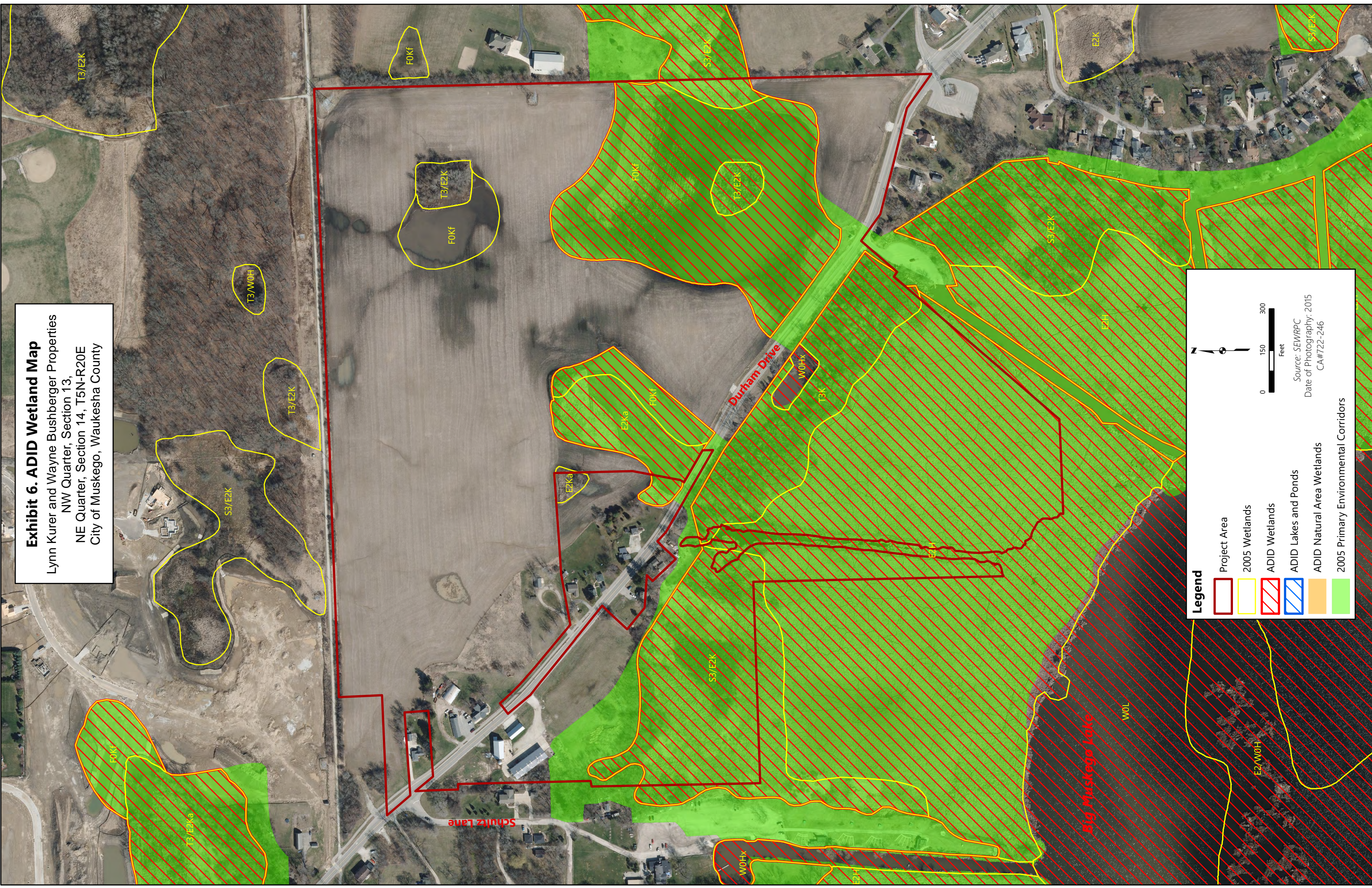
- | | |
|---|---|
|  PRIMARY ENVIRONMENTAL CORRIDOR |  SURFACE WATER WITHIN ENVIRONMENTAL CORRIDORS AND ISOLATED NATURAL RESOURCE AREAS |
|  SECONDARY ENVIRONMENTAL CORRIDOR |  PLANNED SANITARY SEWER SERVICE AREA |
|  ISOLATED NATURAL RESOURCE AREA |  GROSS SANITARY SEWER SERVICE AREA BOUNDARY |
|  WETLANDS AND SURFACE WATER AREAS LESS THAN FIVE ACRES IN SIZE |  LANDS WITHIN THE PLANNED SANITARY SEWER SERVICE AREA INELIGIBLE FOR SEWER SERVICE |



Source: SEWRPC.

NOTE: This map replaces Map 7-7, page 26, of SEWRPC Community Assistance Planning Report No. 64 (3rd Edition), Sanitary Sewer Service Area for the City of Muskego, Waukesha County, Wisconsin, December 1997.

Exhibit 6. ADID Wetland Map
 Lynn Kurer and Wayne Bushberger Properties
 NW Quarter, Section 13,
 NE Quarter, Section 14, T5N-R20E
 City of Muskego, Waukesha County



Legend

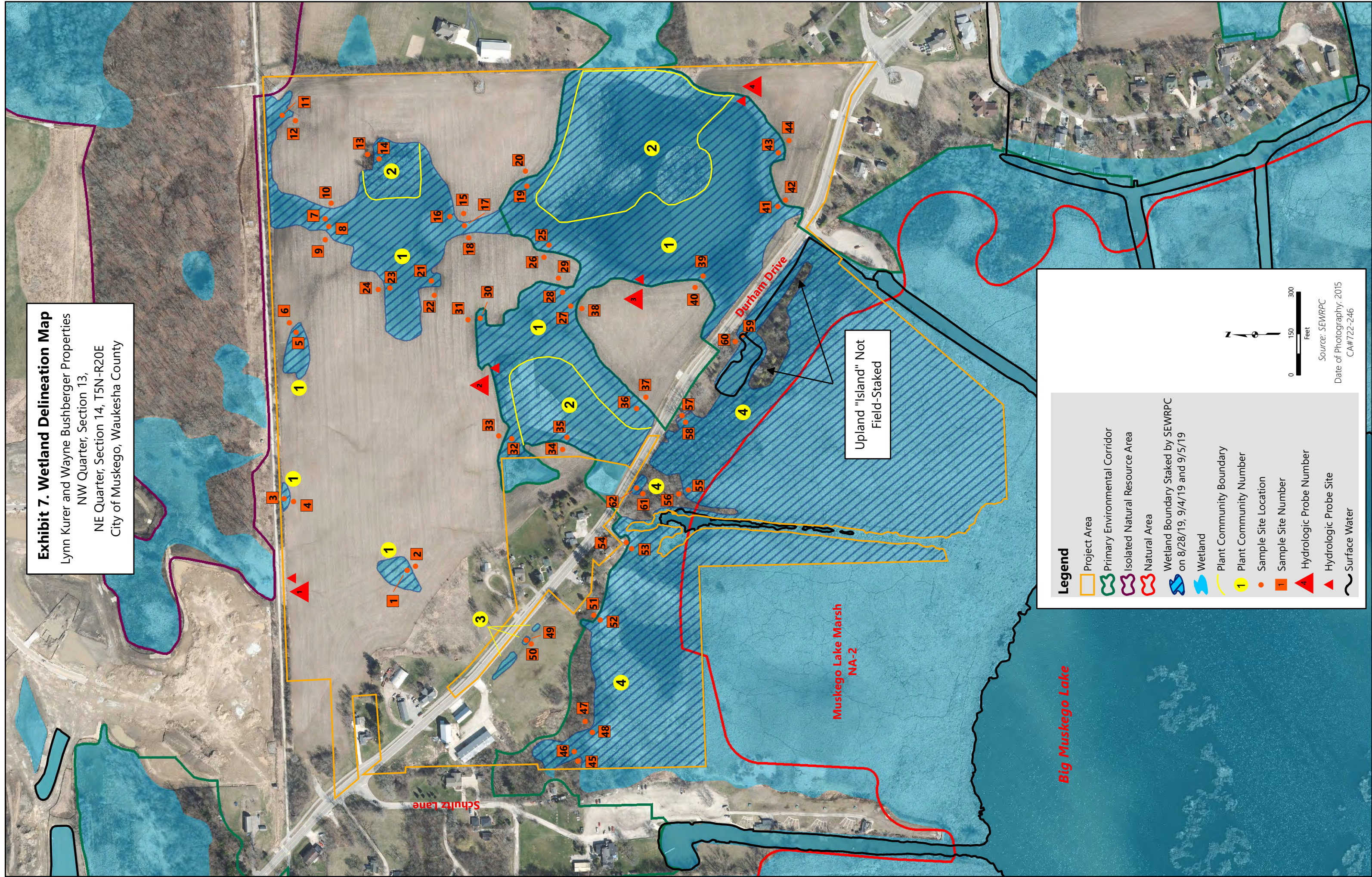
- Project Area
- 2005 Wetlands
- ADID Wetlands
- ADID Lakes and Ponds
- ADID Natural Area Wetlands
- 2005 Primary Environmental Corridors

0 150 300
 Feet











Source: SEWRPC
 Date of Photography: 2015
 CA#722-246

Exhibit 7. Wetland Delineation Map

Lynn Kurer and Wayne Bushberger Properties
NW Quarter, Section 13,
NE Quarter, Section 14, T5N-R20E
City of Muskego, Waukesha County



Legend

-  Project Area
-  Primary Environmental Corridor
-  Isolated Natural Resource Area
-  Natural Area
-  Wetland Boundary Staked by SEWRPC on 8/28/19, 9/4/19 and 9/5/19
-  Wetland
-  Plant Community Boundary
-  Plant Community Number
-  Sample Site Location
-  Sample Site Number
-  Hydrologic Probe Number
-  Hydrologic Probe Site
-  Surface Water



Source: SEWRPC
Date of Photography: 2015
CA#722-246