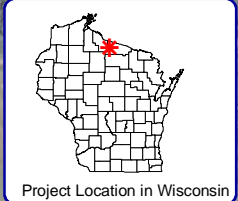


Land Ownership (Inset map)

- Federal (none shown)
- State
- County (none shown)

2,750
 Feet



N
 W E
 S
 1,250
 Feet

Legend

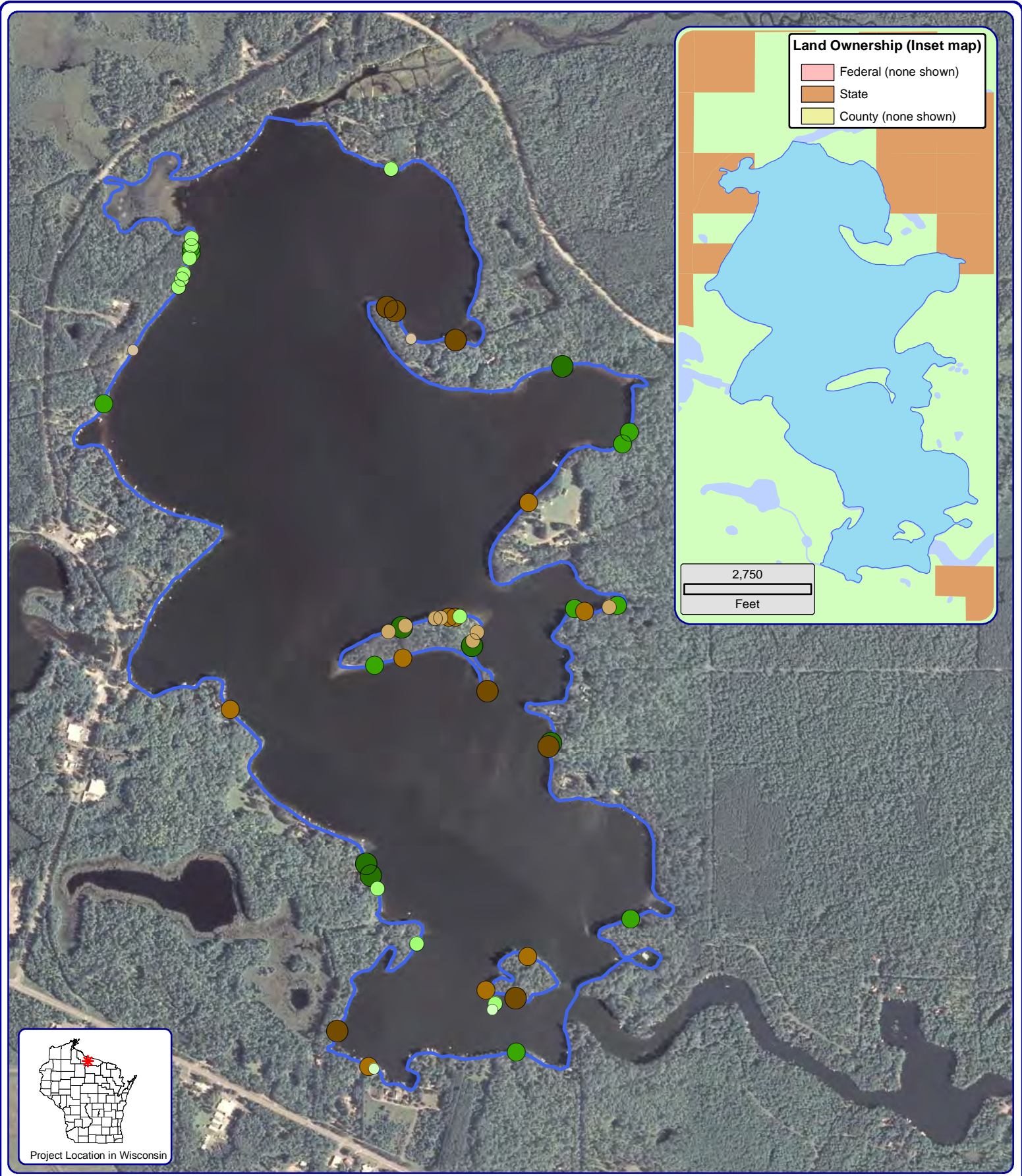
- Natural/Undeveloped
- Developed-Natural
- Developed-Semi-Natural
- Developed-Unnatural
- Urbanized
- Masonry/Wood
- Rip-Rap
- Seawall

Rest Lake - Map 1
 Manitowish Waters
 Chain of Lakes
 Vilas County, Wisconsin

Shoreline Condition

Onterra LLC
 Lake Management Planning
 815 Prosper Road
 De Pere, WI 54115
 920.338.8860
 www.onterra-eco.com

Sources:
 Shoreline Assessment: Onterra, 2013
 Orthophotography: NAIP, 2010
 Map Date: September 24, 2013
 Filename: Rest_Map1_SA_2012.mxd



Land Ownership (Inset map)

- Federal (none shown)
- State
- County (none shown)

2,750
Feet



Project Location in Wisconsin

1,250
Feet

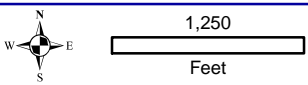
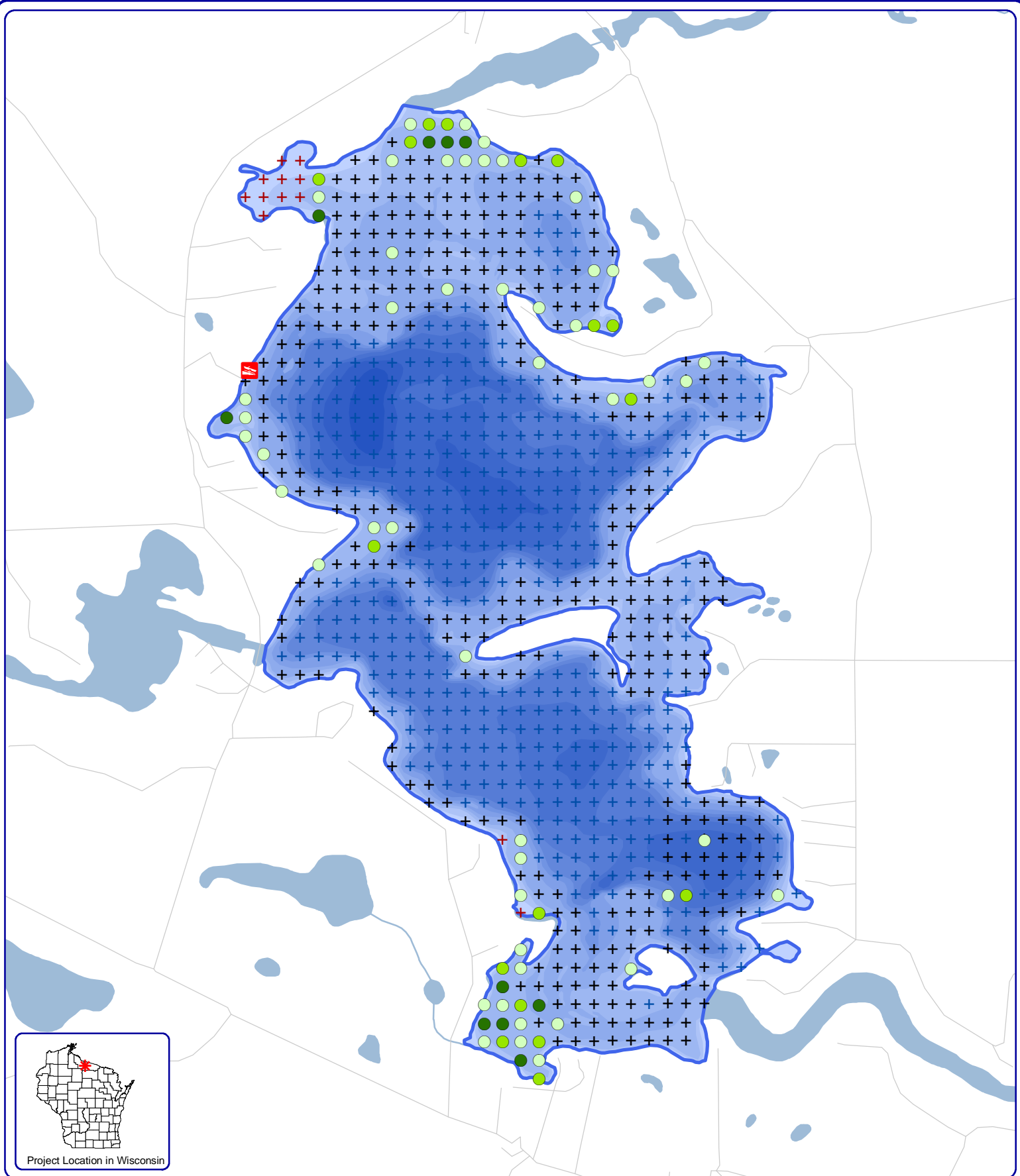
Legend

- 2-8 Inches, No Branches
- >8 Inches, No Branches
- 2-8 Inches, Minimal Branches
- >8 Inches, Minimal Branches (none)
- 2-8 Inches, Moderate Branches
- >8 Inches, Moderate Branches
- 2-8 Inches, Full Canopy (none)
- >8 Inches, Full Canopy
- ✱ Cluster

Sources:
Shoreline Assessment: Onterra, 2013
Orthophotography: NAIP, 2010
Map Date: September 24, 2013
Filename: Rest_Map2_CWH_2012.mxd

Onterra LLC
Lake Management Planning
815 Prosper Road
De Pere, WI 54115
920.338.8860
www.onterra-eco.com

Rest Lake - Map 2
Manitowish Waters
Chain of Lakes
Vilas County, Wisconsin
Course Woody Habitat



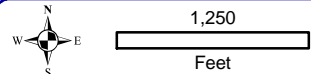
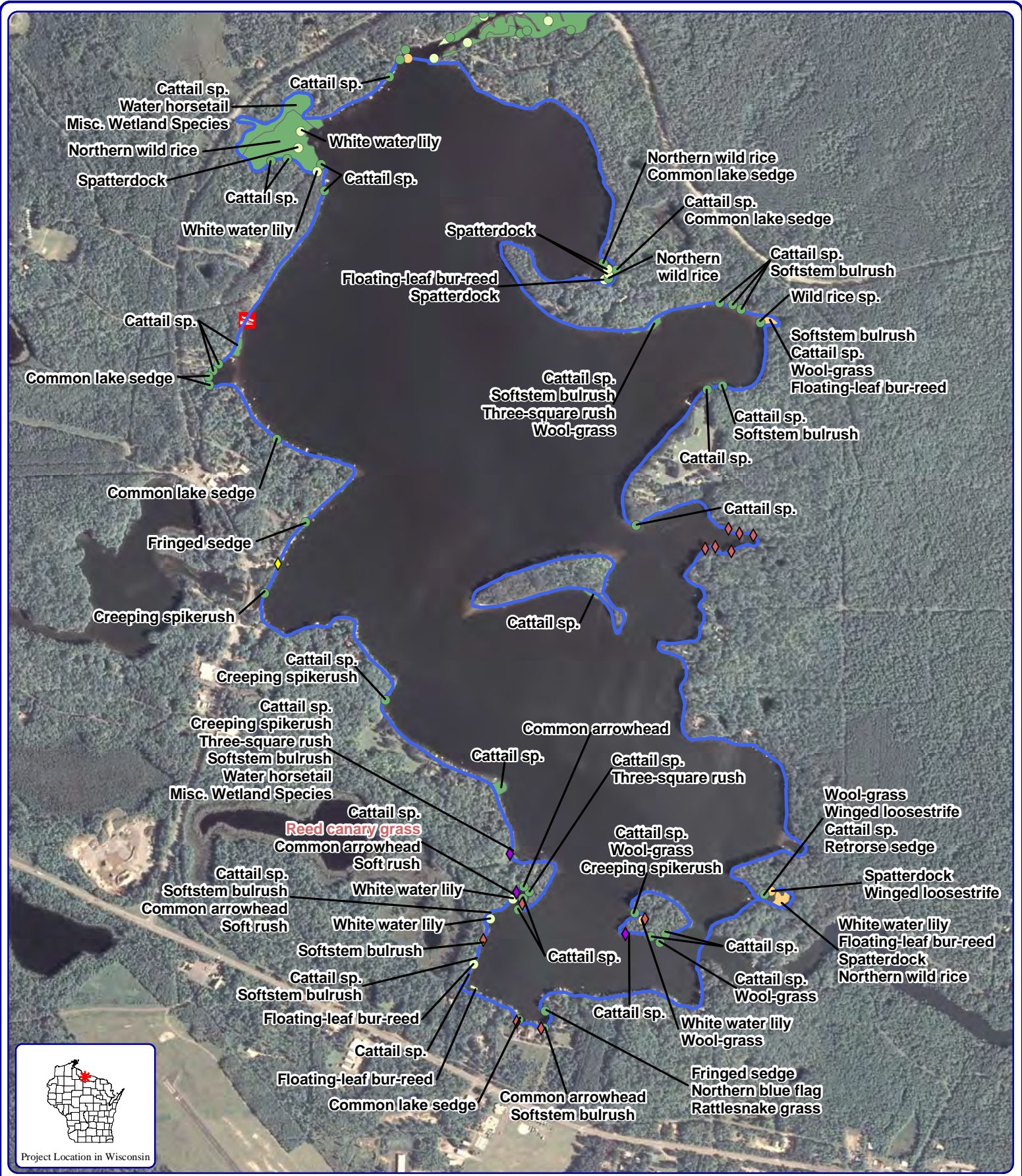
Onterra LLC
 Lake Management Planning
 815 Prosper Road
 De Pere, WI 54115
 920.338.8860
 www.onterra-eco.com

Sources:
 Roads and Hydro: WDNR
 Aquatic Plant Survey: Onterra, 2012
 Map Date: September 24, 2013
 Filename: Rest_Map3_TRFPI_2012.mxd

Legend
 2012 Point-intercept Survey

- + No Vegetation
- ⊕ Too Deep (Below Max Depth of Plants)
- Total Rake Fullness = 1
- ⊕ Non-navigable
- Total Rake Fullness = 2
- Total Rake Fullness = 3

Rest Lake - Map 3
 Manitowish Waters
 Chain of Lakes
 Vilas County, Wisconsin
Aquatic Vegetation
Distribution



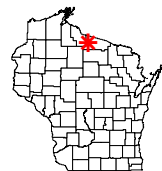
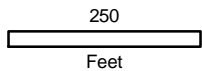
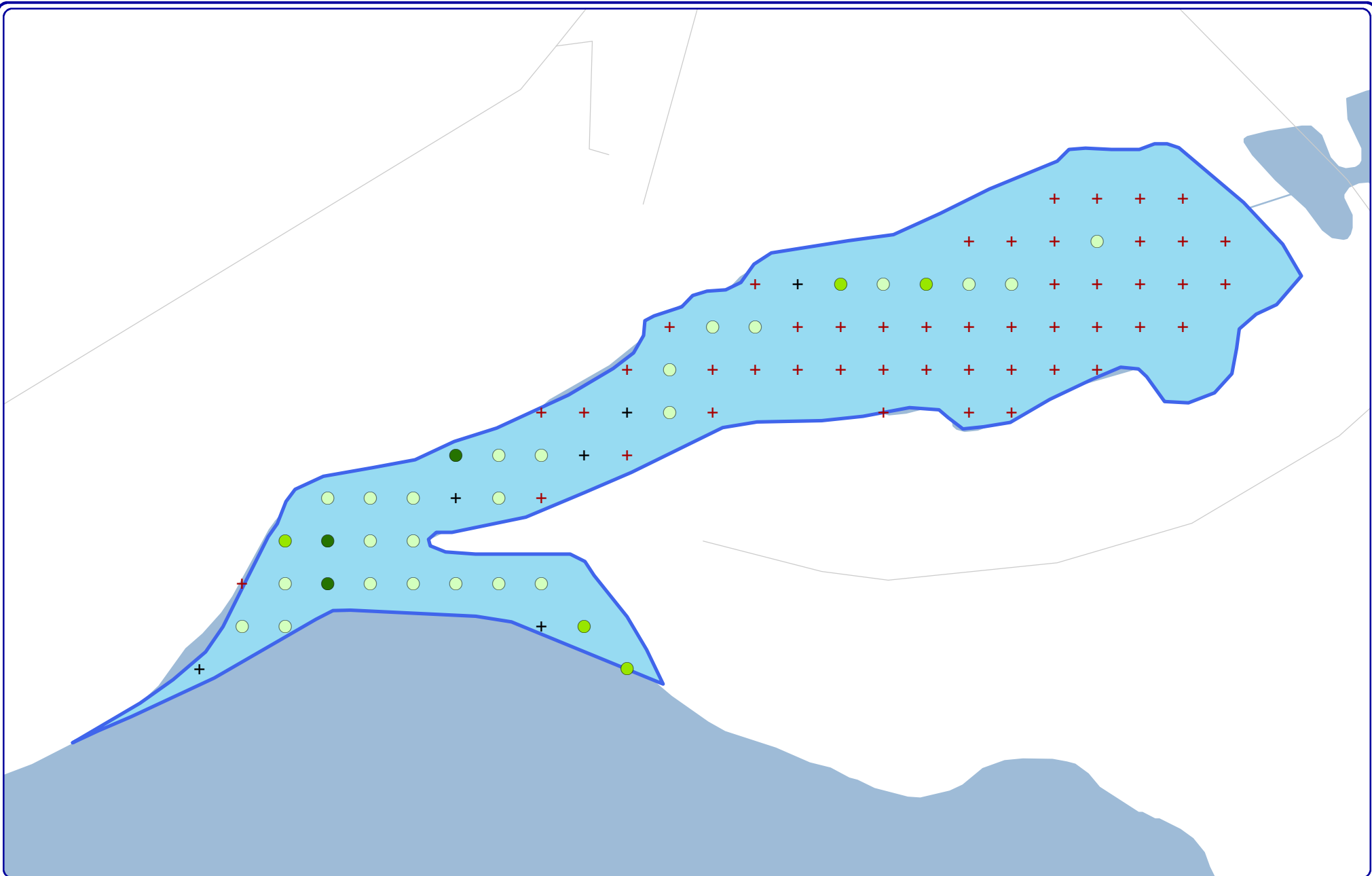
Onterra LLC
 Lake Management Planning
 815 Prosper Road
 De Pere, WI 54115
 920.338.8860
 www.onterra-eco.com

Sources:
 Hydro: WDNR
 Aquatic Plants: Onterra, 2012
 Orthophotography: NAIP, 2010
Map date: December 11, 2012
 Filename: Rest_Comm_2012.mxd

Small Plant Communities		Large Plant Communities		Exotic Plant Communities	
●	Emergent	■	Emergent	◆	Purple Loosestrife
●	Floating-leaf	■	Floating-leaf	◆	Pale Yellow Iris
●	Mixed Floating-leaf & Emergent	■	Mixed Floating-leaf & Emergent	◆	Reed Canary Grass

Rest Lake - Map 4
 Manitowish Waters
 Chain of Lakes
 Vilas County, Wisconsin

**Emergent & Floating-leaf
 Aquatic Plant Communities**



Project Location in Wisconsin

Onterra LLC
 Lake Management Planning
 815 Prosper Road
 De Pere, WI 54115
 920.338.8860
 www.onterra-eco.com

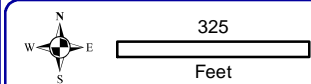
Sources:
 Aquatic Plant Survey: Onterra, 2012
 Roads and Hydro: WDNR
 Map Date: September 24, 2013
 Filename: PapooseBay_Map1_TRFPI_2012.mxd

Legend

2012 Point-intercept Survey

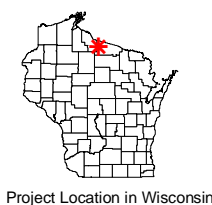
- + No Vegetation
- + Too Deep (Below Max Depth of Plants)
- + Non-navigable
- Total Rake Fullness = 1
- Total Rake Fullness = 2
- Total Rake Fullness = 3

Papoose Bay - Map 1
 Manitowish Waters
 Chain of Lakes
 Vilas County, Wisconsin
Aquatic Plant Distribution



Onterra LLC
 Lake Management Planning
 815 Prosper Road
 De Pere, WI 54115
 920.338.8860
 www.onterra-eco.com

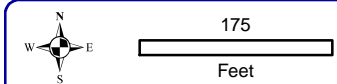
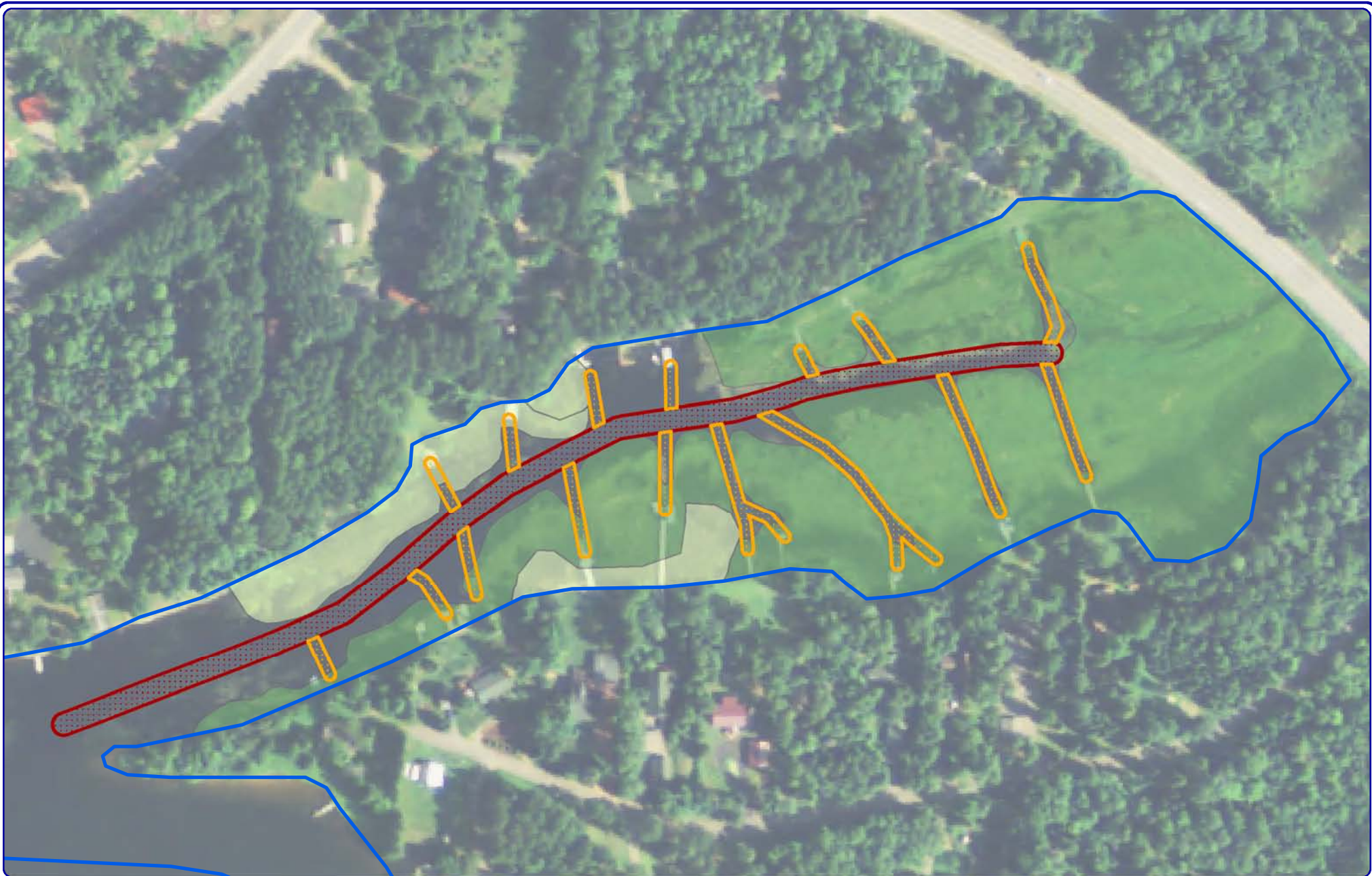
Sources:
 Aquatic Plants: Onterra, 2012
 Orthophotography: NAIP, 2010
 Map date: December 11, 2012
 Filename: PapooseBay_Map2_Comm_2012.mxd



Legend

Small Plant Communities	Large Plant Communities
● Emergent	■ Emergent
○ Floating-leaf	■ Floating-leaf
● Mixed Floating-leaf & Emergent	■ Mixed Floating-leaf & Emergent

Papoose Bay - Map 2
 Manitowish Waters
 Chain of Lakes
 Vilas County, Wisconsin
**Emergent & Floating-leaf
 Aquatic Plant Communities**







Onterra LLC
 Lake Management Planning
 815 Prosper Road
 De Pere, WI 54115
 920.338.8860
 www.onterra-eco.com

Sources:
 Aquatic Plants: Onterra, 2012
 Orthophotography: NAIP, 2010
Map date: October 8, 2013
 Filename: Rest_Map3_MechanicalHarvestPlan.mxd



Legend

- Mechanical Harvest Plan**
-  Common Use Lane
(30-ft width, 1.0 total acres)
 -  Riparian Access Lane
(15-ft width, 0.7 total acres)

- Northern Wild Rice**
-  Dense Plant Community
 -  Sparse Plant Community

Papoose Bay - Map 3
 Manitowish Waters
 Chain of Lakes
 Vilas County, Wisconsin
**Current Mechanical
 Harvest Plan**