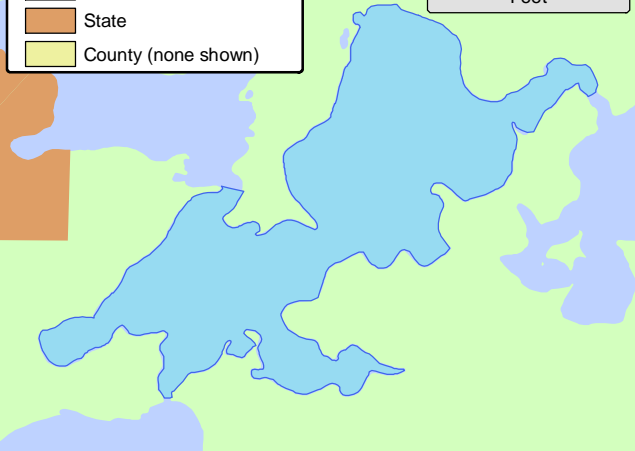
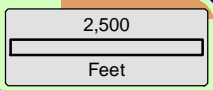
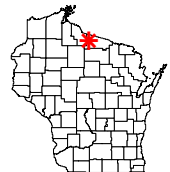
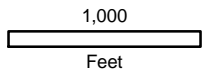
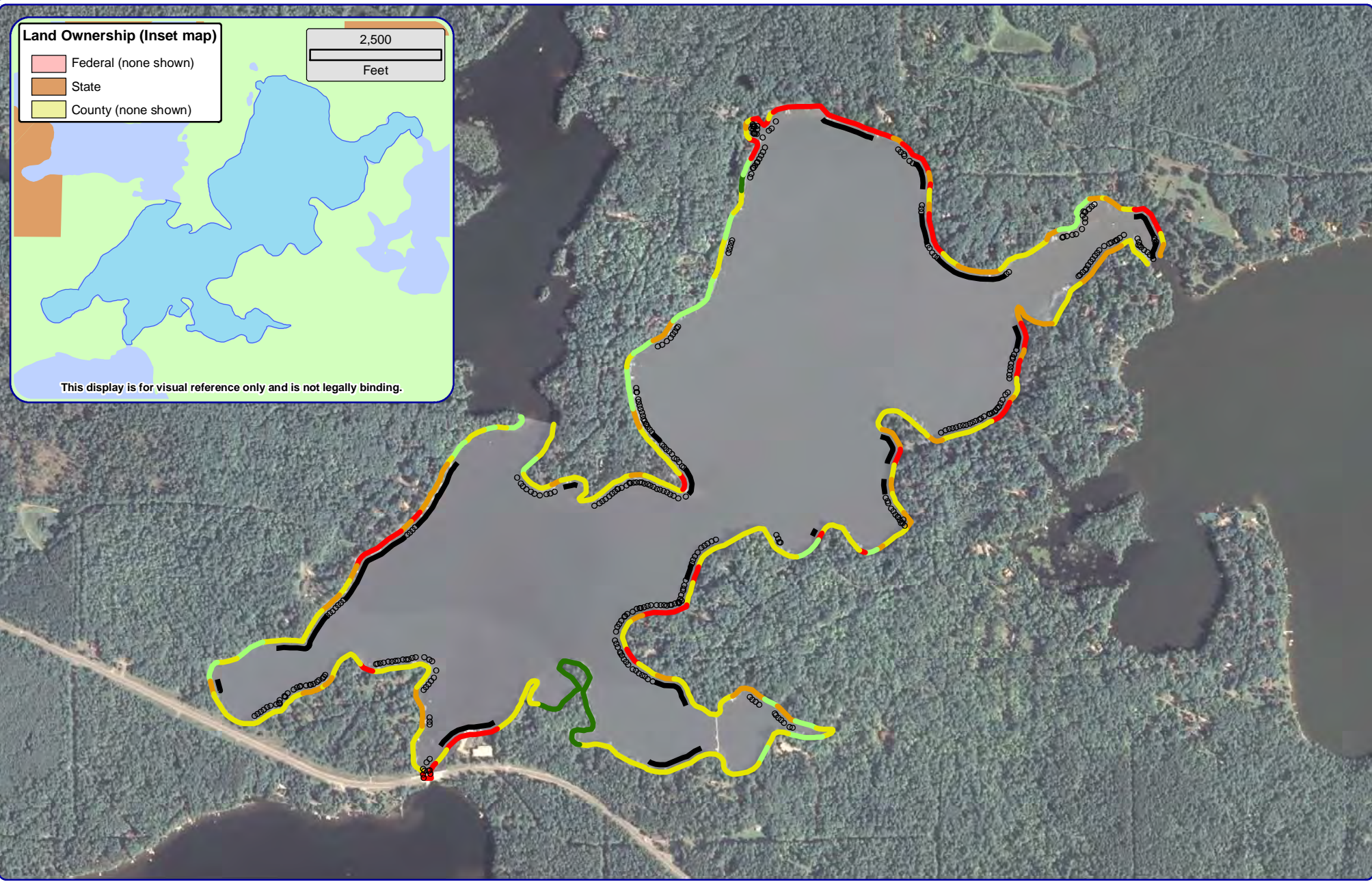


**Land Ownership (Inset map)**

- Federal (none shown)
- State
- County (none shown)



This display is for visual reference only and is not legally binding.



Project Location in Wisconsin

**Onterra LLC**  
Lake Management Planning  
815 Prosper Road  
De Pere, WI 54115  
920.338.8860  
www.onterra-eco.com

Sources:  
Shoreline Assessment: Onterra, 2012  
Orthophotography: NAIP, 2013  
Map Date: September 24, 2013  
Filename: Spider\_Map1\_SA\_2012.mxd

- Natural/Undeveloped
- Developed-Natural
- Developed-Semi-Natural
- Developed-Unnatural
- Urbanized

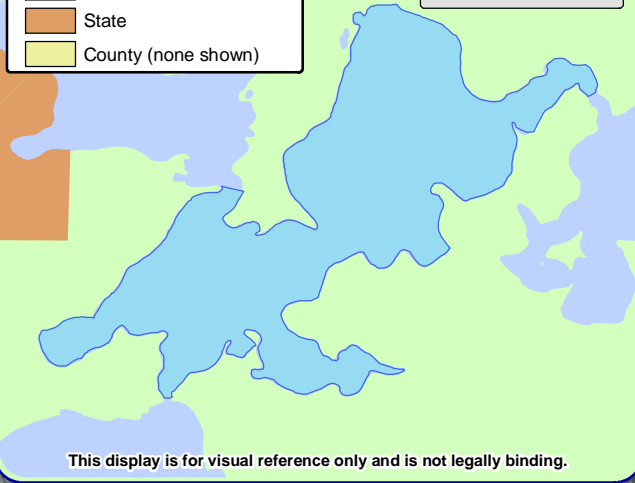
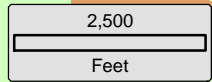
**Legend**

- Seawall
- Masonary/Metal/Wood
- Rip-Rap

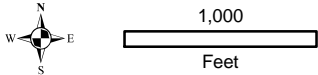
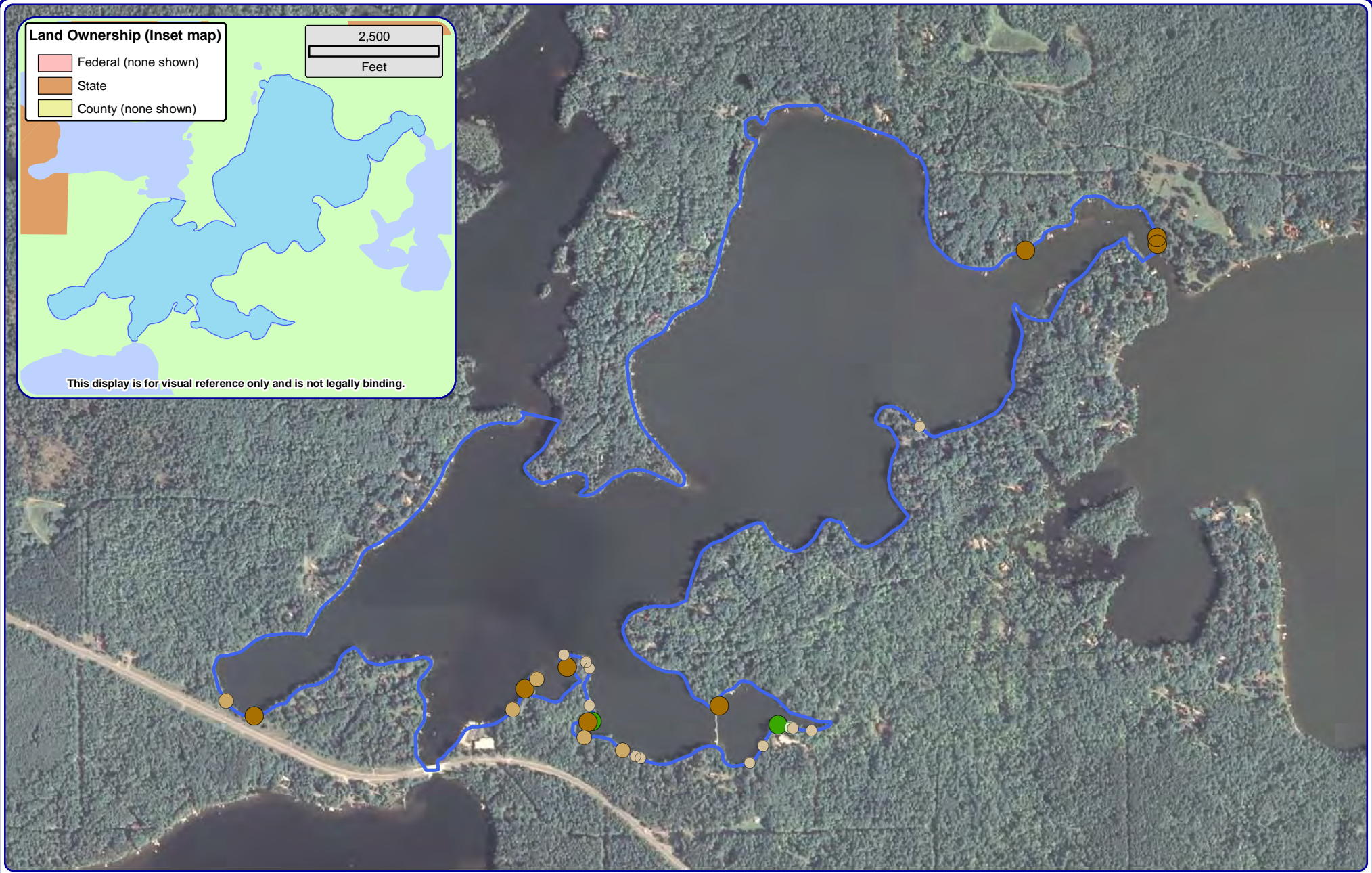
Spider Lake - Map 1  
Manitowish Waters  
Chain of Lakes  
Vilas County, Wisconsin  
**Shoreline Condition**

**Land Ownership (Inset map)**

- Federal (none shown)
- State
- County (none shown)



This display is for visual reference only and is not legally binding.



Project Location in Wisconsin

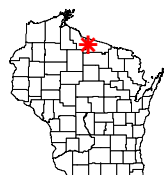
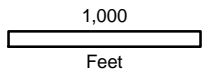
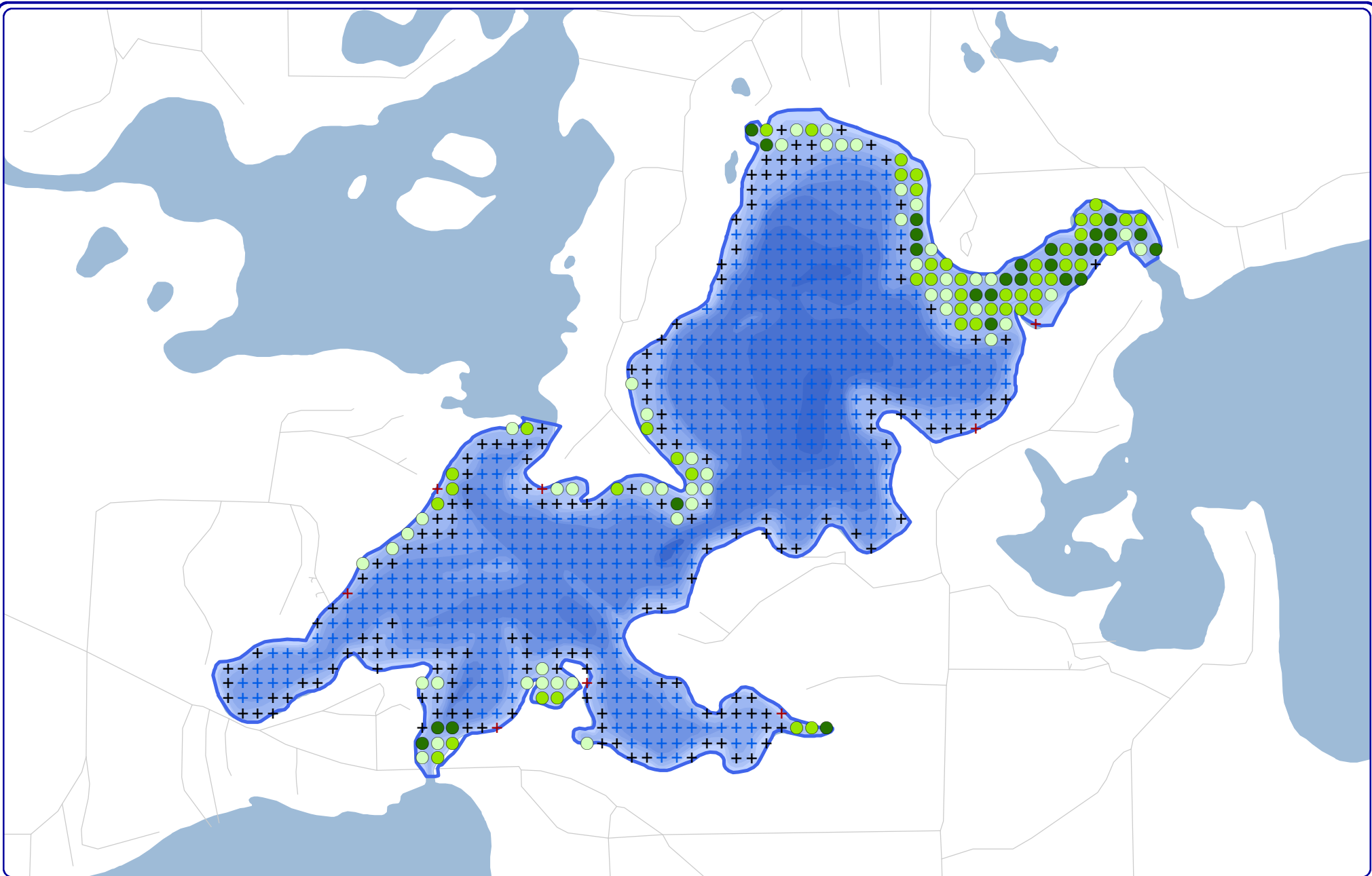
**Legend**

- 2-8 Inches, No Branches
- 2-8 Inches, Minimal Branches
- 2-8 Inches, Moderate Branches
- 2-8 Inches, Full Canopy (none)
- >8 Inches, No Branches
- >8 Inches, Minimal Branches (none)
- >8 Inches, Moderate Branches
- >8 Inches, Full Canopy
- Cluster

**Onterra LLC**  
 Lake Management Planning  
 815 Prosper Road  
 De Pere, WI 54115  
 920.338.8860  
 www.onterra-eco.com

Sources:  
 Shoreline Assessment: Onterra, 2012  
 Orthophotography: NAIP, 2010  
 Map Date: September 24, 2013  
 Filename: Spider\_Map2\_CWH\_2012.mxd

Spider Lake - Map 2  
 Manitowish Waters  
 Chain of Lakes  
 Vilas County, Wisconsin  
**Course Woody Habitat**



Project Location in Wisconsin

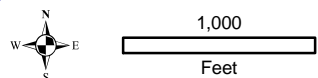
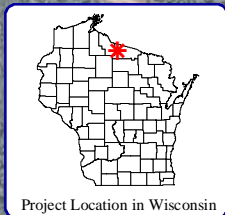
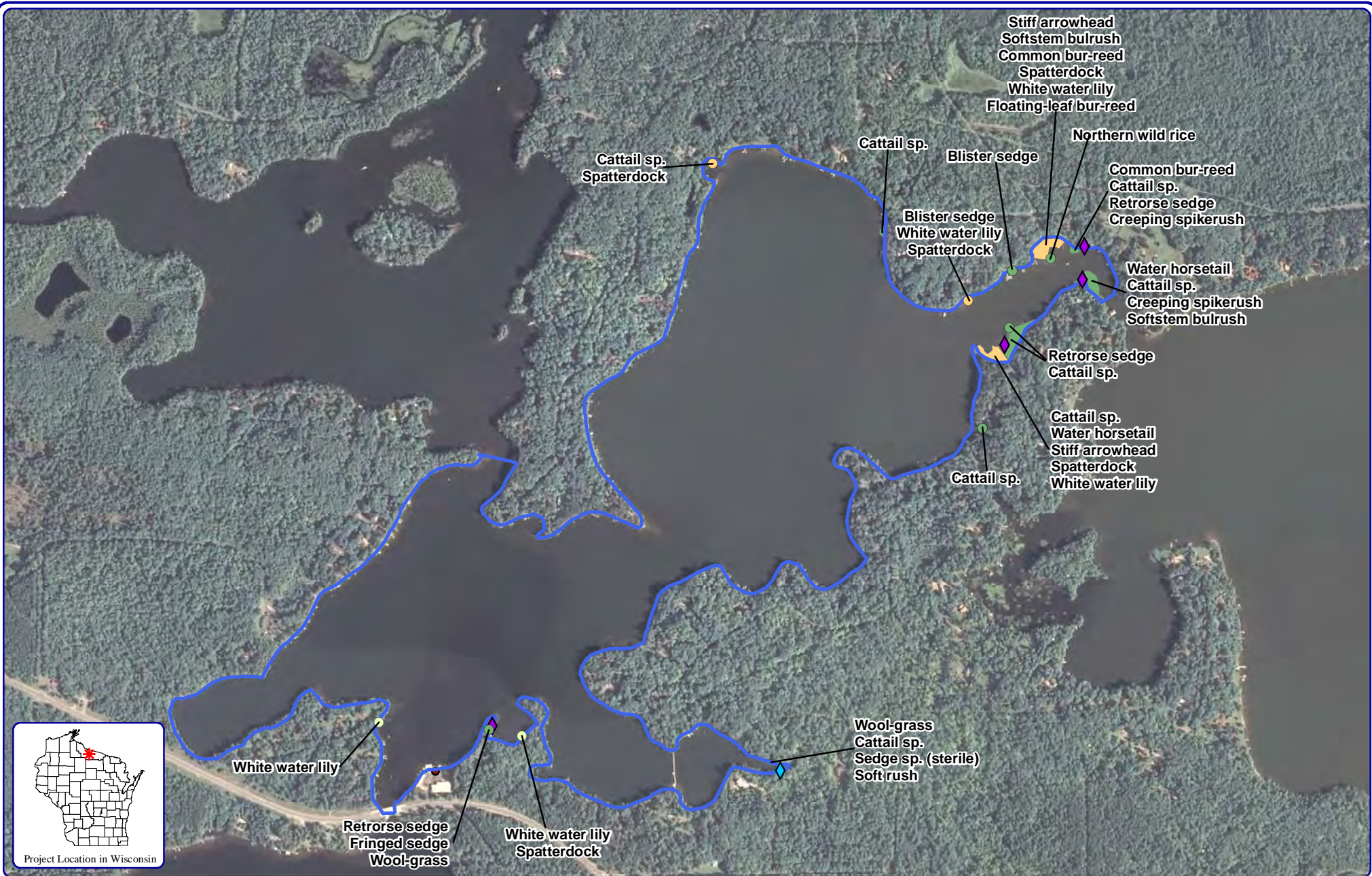
**Onterra LLC**  
 Lake Management Planning  
 815 Prosper Road  
 De Pere, WI 54115  
 920.338.8860  
 www.onterra-eco.com

Sources:  
 Aquatic Plant Survey: Onterra, 2012  
 Roads and Hydro: WDNR  
 Map Date: September 24, 2013  
 Filename: Spider\_Map3\_TREPI\_2012.mxd

**Legend**  
 2012 Point-intercept Survey

- + No Vegetation
- ⊕ Too Deep (Below Max Depth of Plants)
- ⊕ Non-navigable
- Total Rake Fullness = 1
- Total Rake Fullness = 2
- Total Rake Fullness = 3

Spider Lake - Map 3  
 Manitowish Waters  
 Chain of Lakes  
 Vilas County, Wisconsin  
**Aquatic Plant Distribution**



**Onterra LLC**  
 Lake Management Planning  
 815 Prosper Road  
 De Pere, WI 54115  
 920.338.8860  
 www.onterra-eco.com

Sources:  
 Aquatic Plants: Onterra, 2012  
 Orthophotography: NAIP, 2010  
 Map date: December 11, 2012  
 Filename: Spider\_Map4\_Comm\_2012.mxd

**Legend**

- |   |   |   |
|---|---|---|
| <p><b>Small Plant Communities</b></p> <ul style="list-style-type: none"> <li>● Emergent</li> <li>● Floating-leaf</li> <li>● Mixed Floating-leaf &amp; Emergent</li> </ul> | <p><b>Large Plant Communities</b></p> <ul style="list-style-type: none"> <li>⊕ Emergent</li> <li>⊕ Floating-leaf</li> <li>⊕ Mixed Floating-leaf &amp; Emergent</li> <li>⊕ Adjacent Wetland Habitat</li> </ul> | <p><b>Exotic Plant Communities</b></p> <ul style="list-style-type: none"> <li>◆ Purple loosestrife</li> <li>◆ Common forget-me-not</li> </ul> |
|---|---|---|

Spider Lake - Map 4  
 Manitowish Waters  
 Chain of Lakes  
 Vilas County, Wisconsin

**Emergent & Floating-leaf  
 Aquatic Plant Communities**