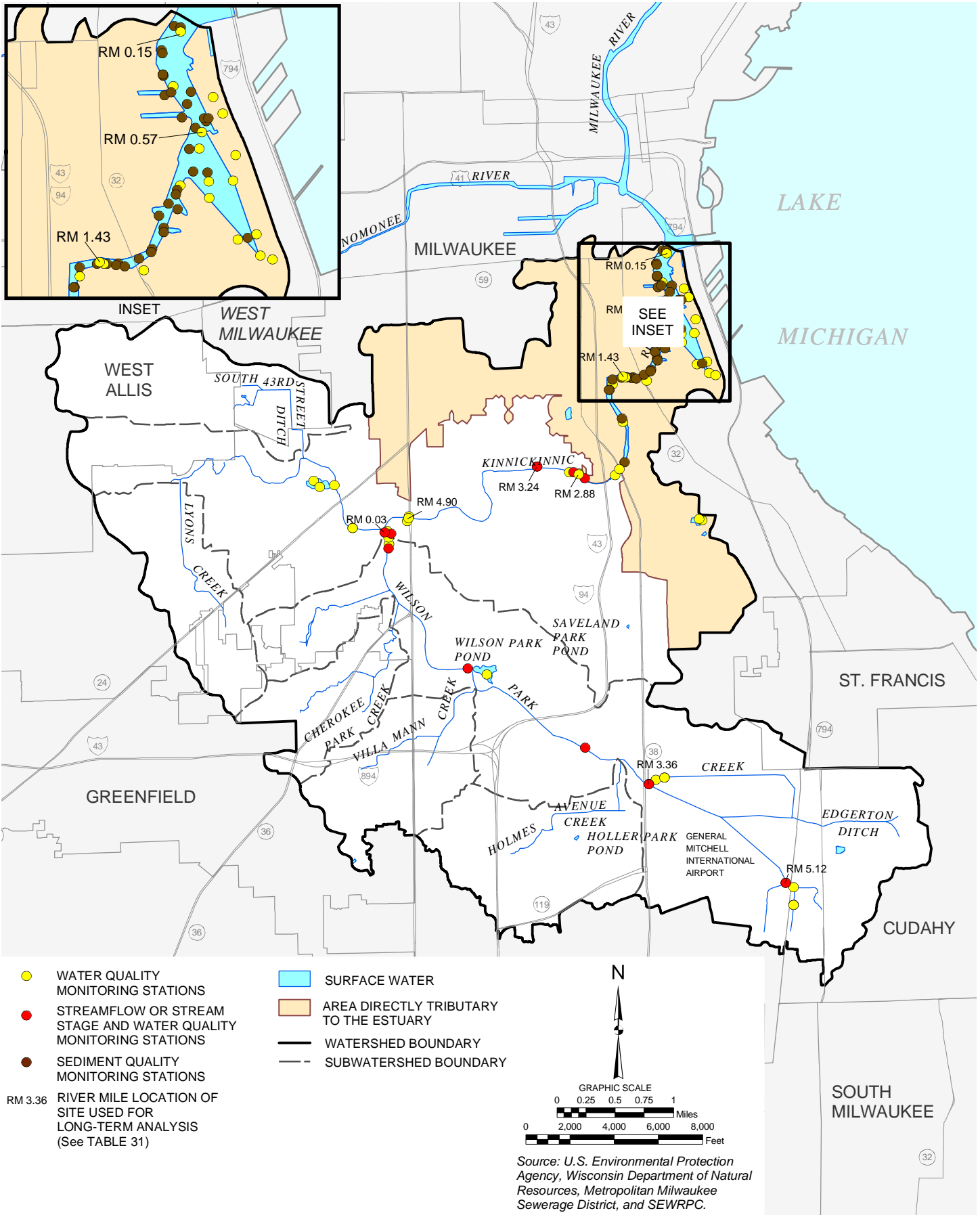


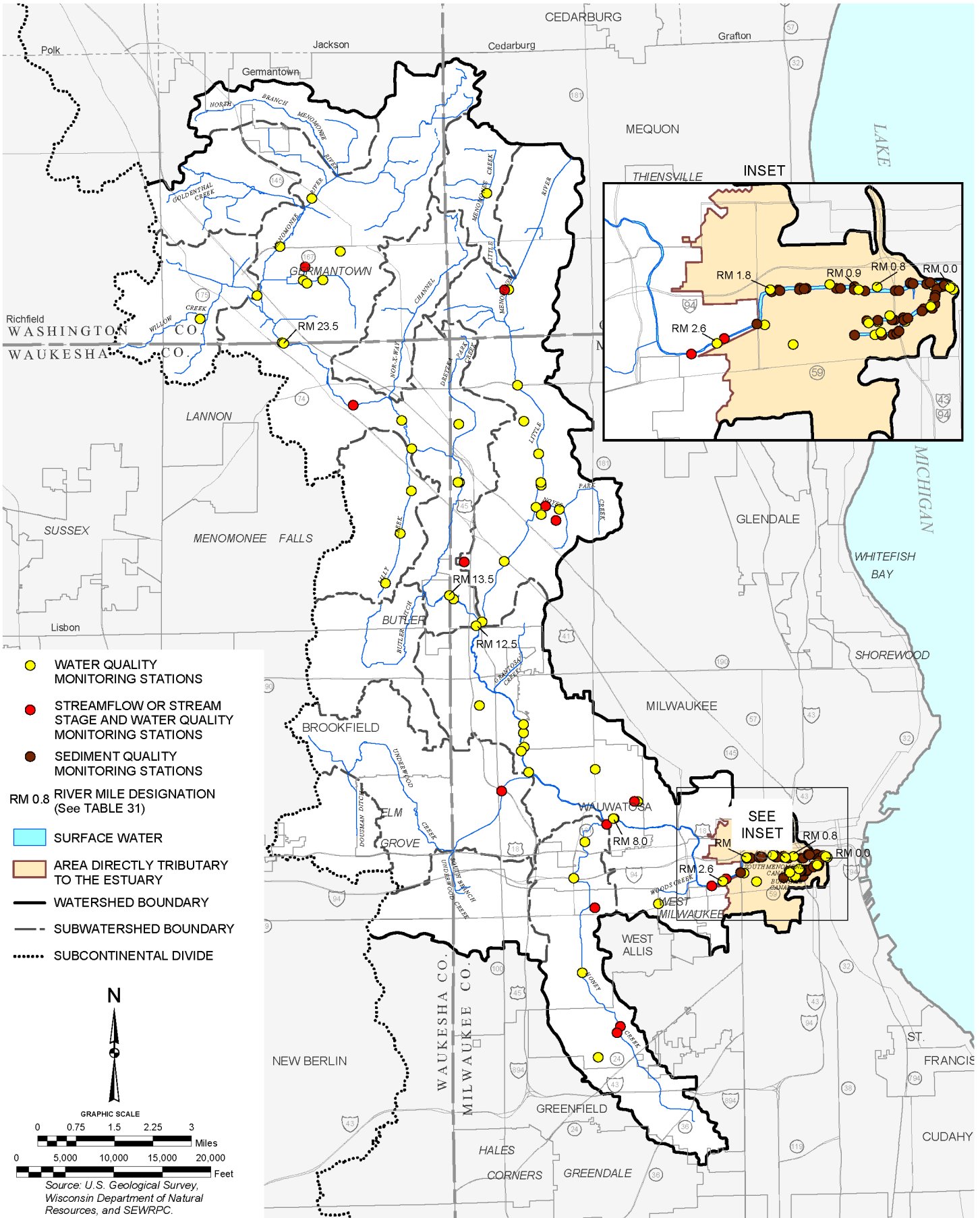
WATER AND SEDIMENT QUALITY MONITORING STATIONS WITHIN THE KINNICKINNIC RIVER WATERSHED: 1975-2001



RM 3.36 RIVER MILE LOCATION OF SITE USED FOR LONG-TERM ANALYSIS (See TABLE 31)

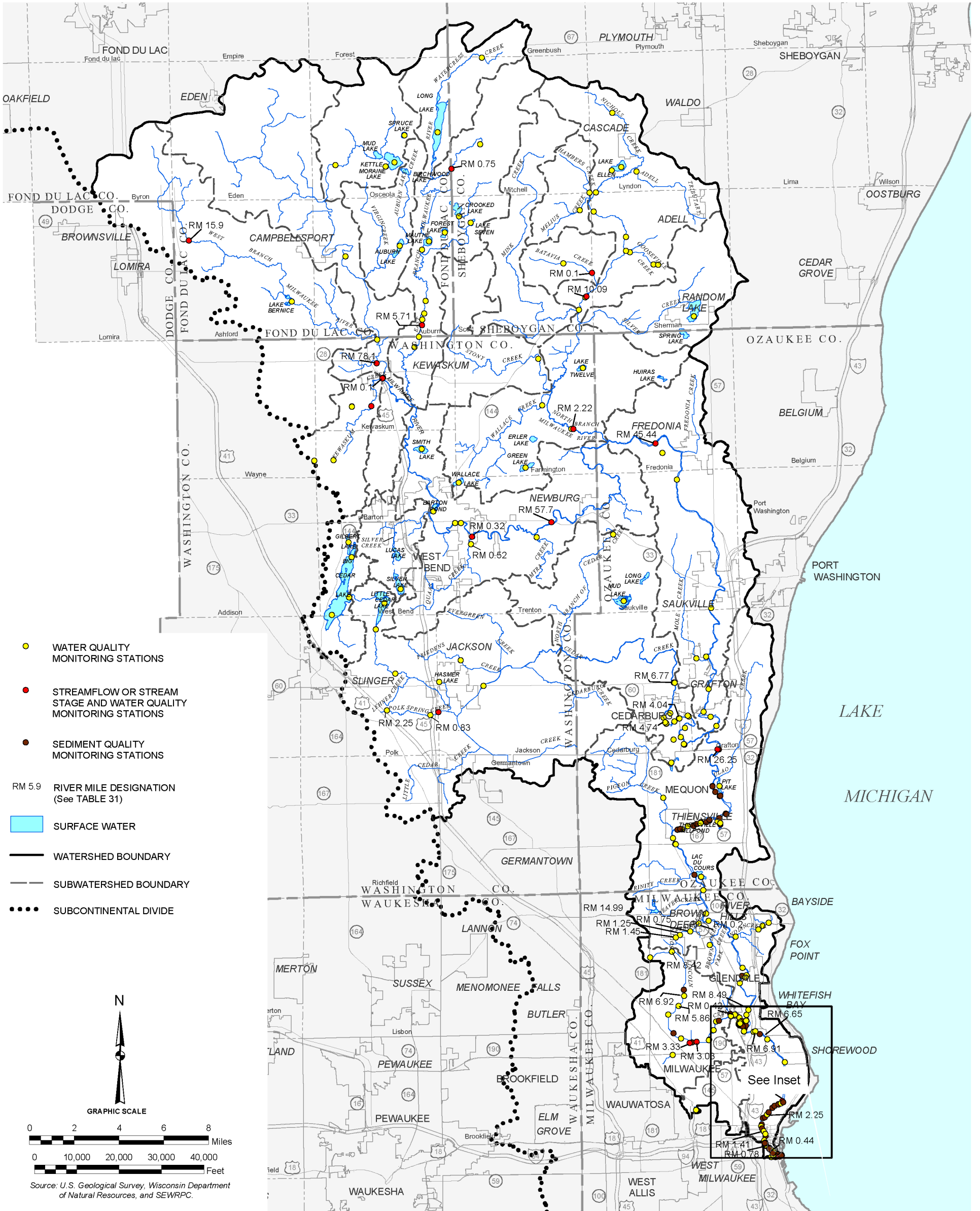
Source: U.S. Environmental Protection Agency, Wisconsin Department of Natural Resources, Metropolitan Milwaukee Sewerage District, and SEWRPC.

WATER AND SEDIMENT QUALITY MONITORING STATIONS WITHIN THE MENOMONEE RIVER WATERSHED: 1975-2001

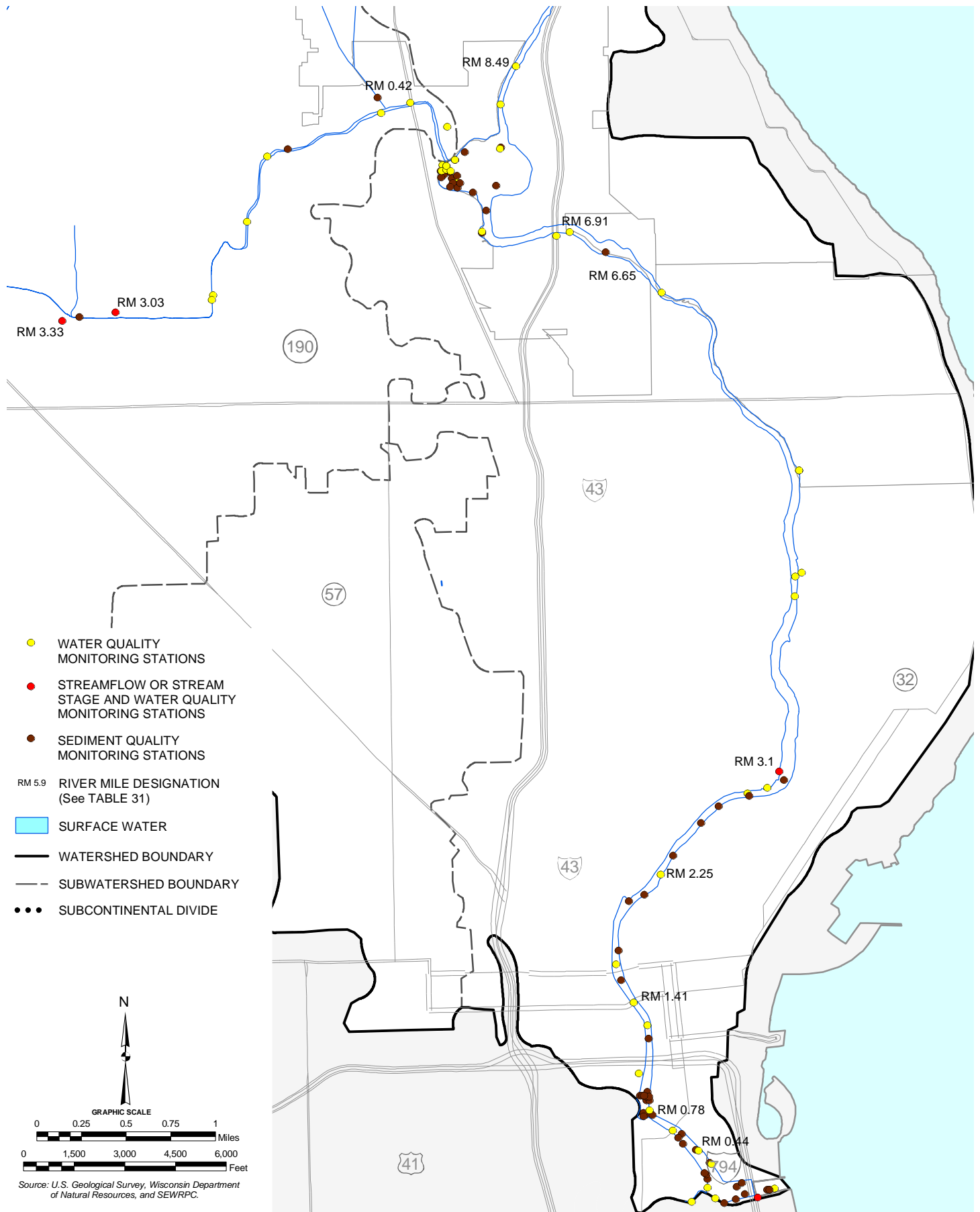


Map 23

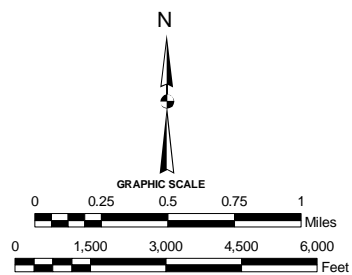
WATER AND SEDIMENT QUALITY MONITORING STATIONS WITHIN THE MILWAUKEE RIVER WATERSHED: 1975-2004



INSET to Map 23

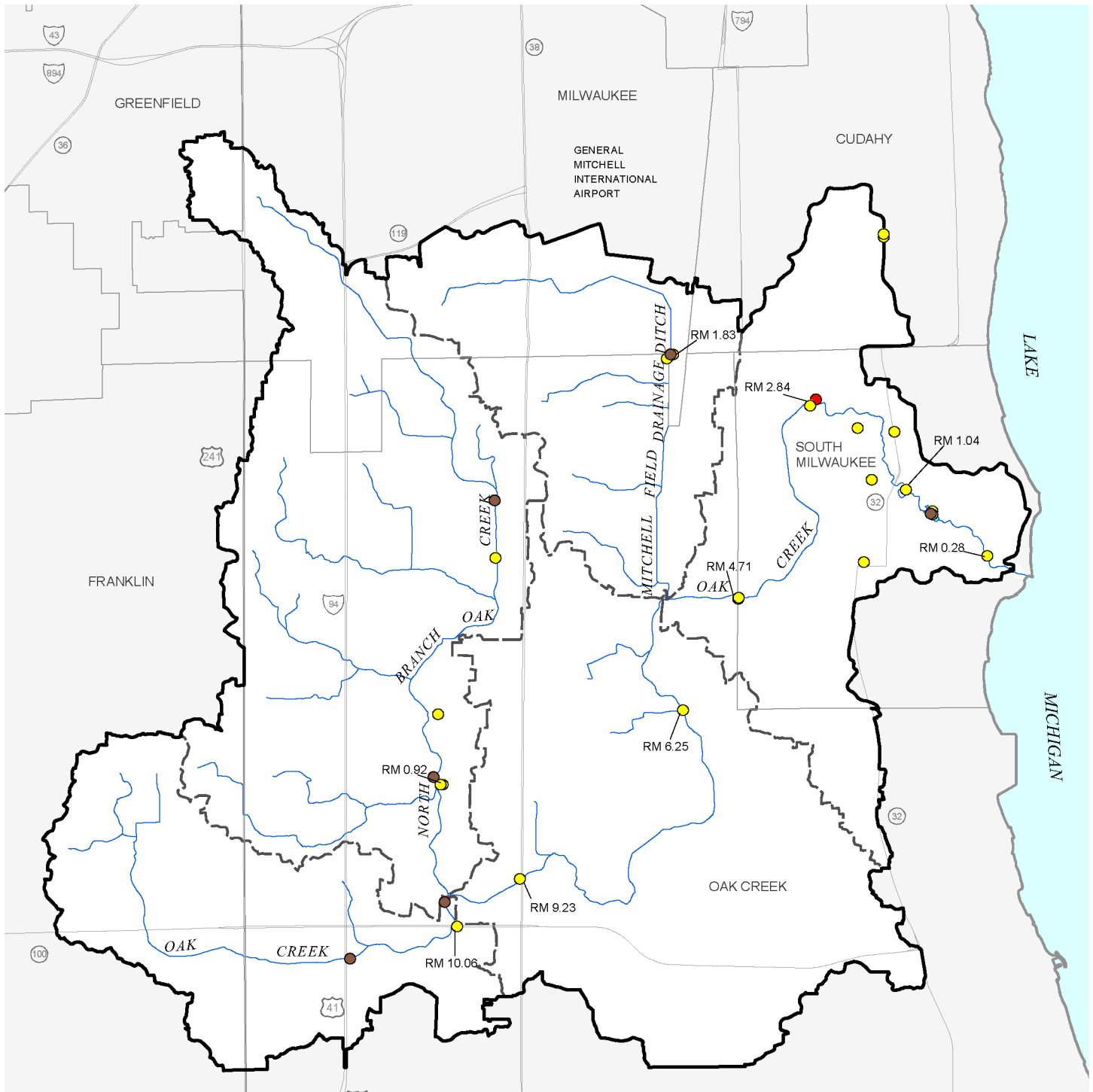


- WATER QUALITY MONITORING STATIONS
- STREAMFLOW OR STREAM STAGE AND WATER QUALITY MONITORING STATIONS
- SEDIMENT QUALITY MONITORING STATIONS
- RM 5.9 RIVER MILE DESIGNATION (See TABLE 31)
- SURFACE WATER
- WATERSHED BOUNDARY
- SUBWATERSHED BOUNDARY
- SUBCONTINENTAL DIVIDE



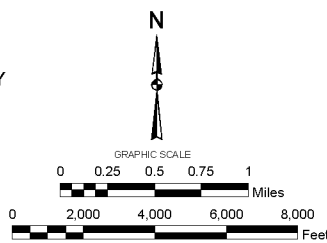
Source: U.S. Geological Survey, Wisconsin Department of Natural Resources, and SEWRPC.

WATER AND SEDIMENT QUALITY MONITORING STATIONS WITHIN THE OAK CREEK WATERSHED: 1975-2001



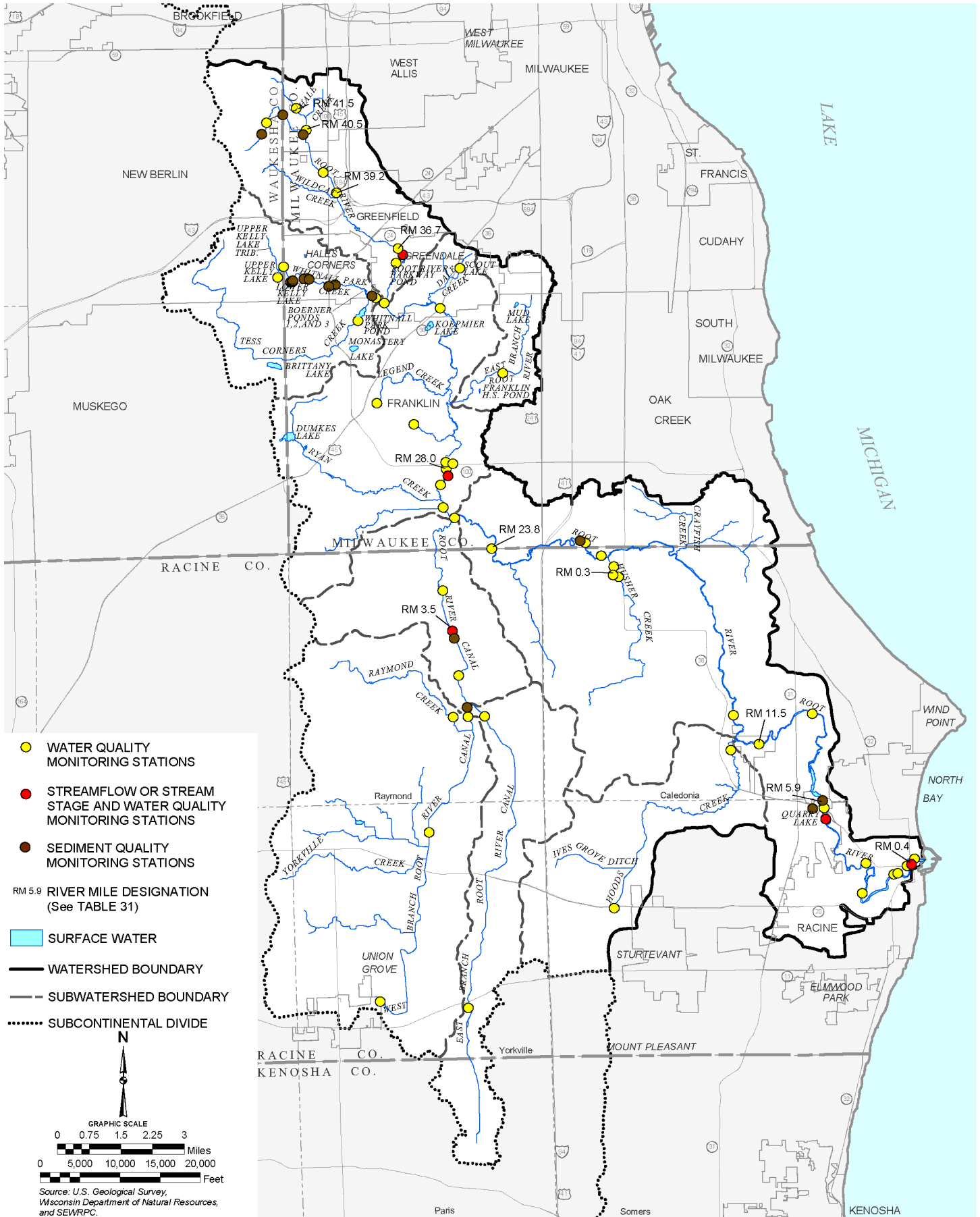
- WATER QUALITY MONITORING STATIONS
- USGS STREAMFLOW OR STREAM STAGE AND WATER QUALITY MONITORING STATIONS
- SEDIMENT QUALITY MONITORING STATIONS
- SURFACE WATER
- WATERSHED BOUNDARY
- SUBWATERSHED BOUNDARY

RM 6.25 RIVER MILE DESIGNATION
(See TABLE 31)

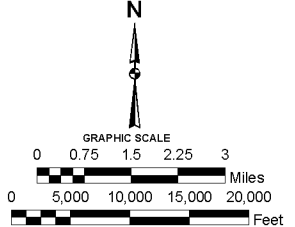


Source: U.S. Environmental Protection Agency, Wisconsin Department of Natural Resources, Metropolitan Milwaukee Sewerage District, and SEWRPC.

WATER AND SEDIMENT QUALITY MONITORING STATIONS WITHIN THE ROOT RIVER WATERSHED: 1975-2004

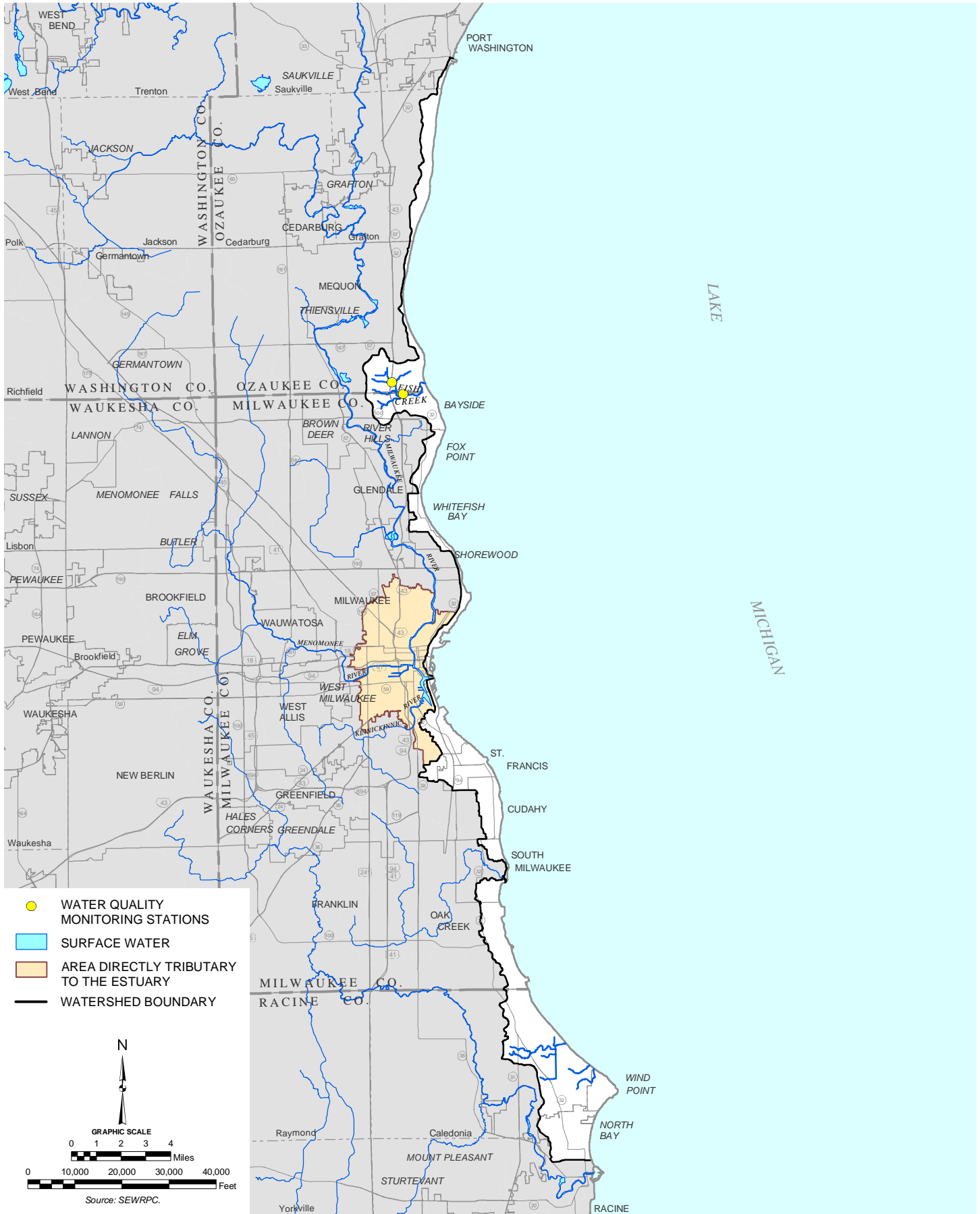


- WATER QUALITY MONITORING STATIONS
- STREAMFLOW OR STREAM STAGE AND WATER QUALITY MONITORING STATIONS
- SEDIMENT QUALITY MONITORING STATIONS
- RM 5.9 RIVER MILE DESIGNATION (See TABLE 31)
- SURFACE WATER
- WATERSHED BOUNDARY
- SUBWATERSHED BOUNDARY
- SUBCONTINENTAL DIVIDE

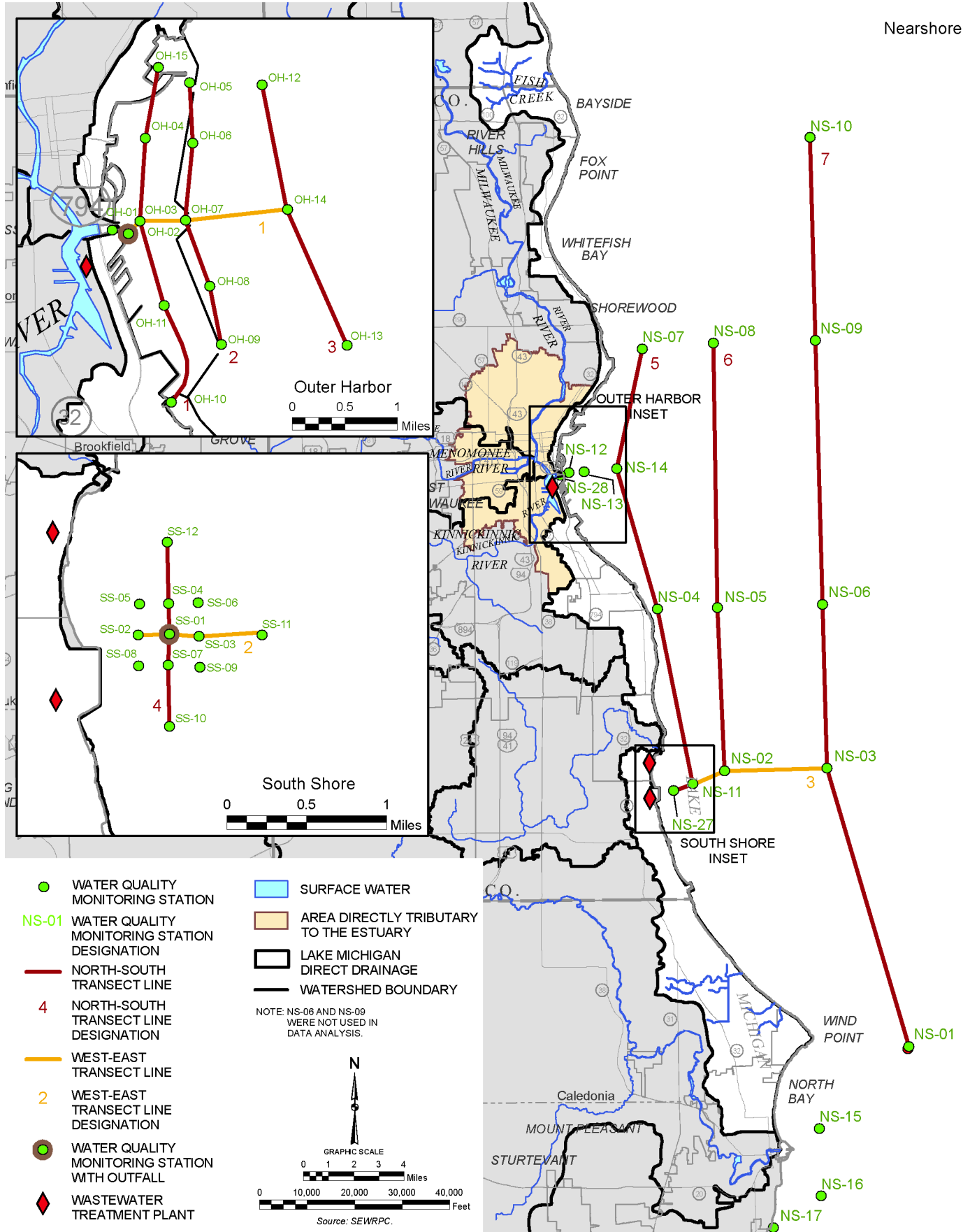


Source: U.S. Geological Survey, Wisconsin Department of Natural Resources, and SEWRPC.

WATER QUALITY MONITORING STATIONS WITHIN THE AREA DIRECTLY TRIBUTARY TO LAKE MICHIGAN: 2002-2005



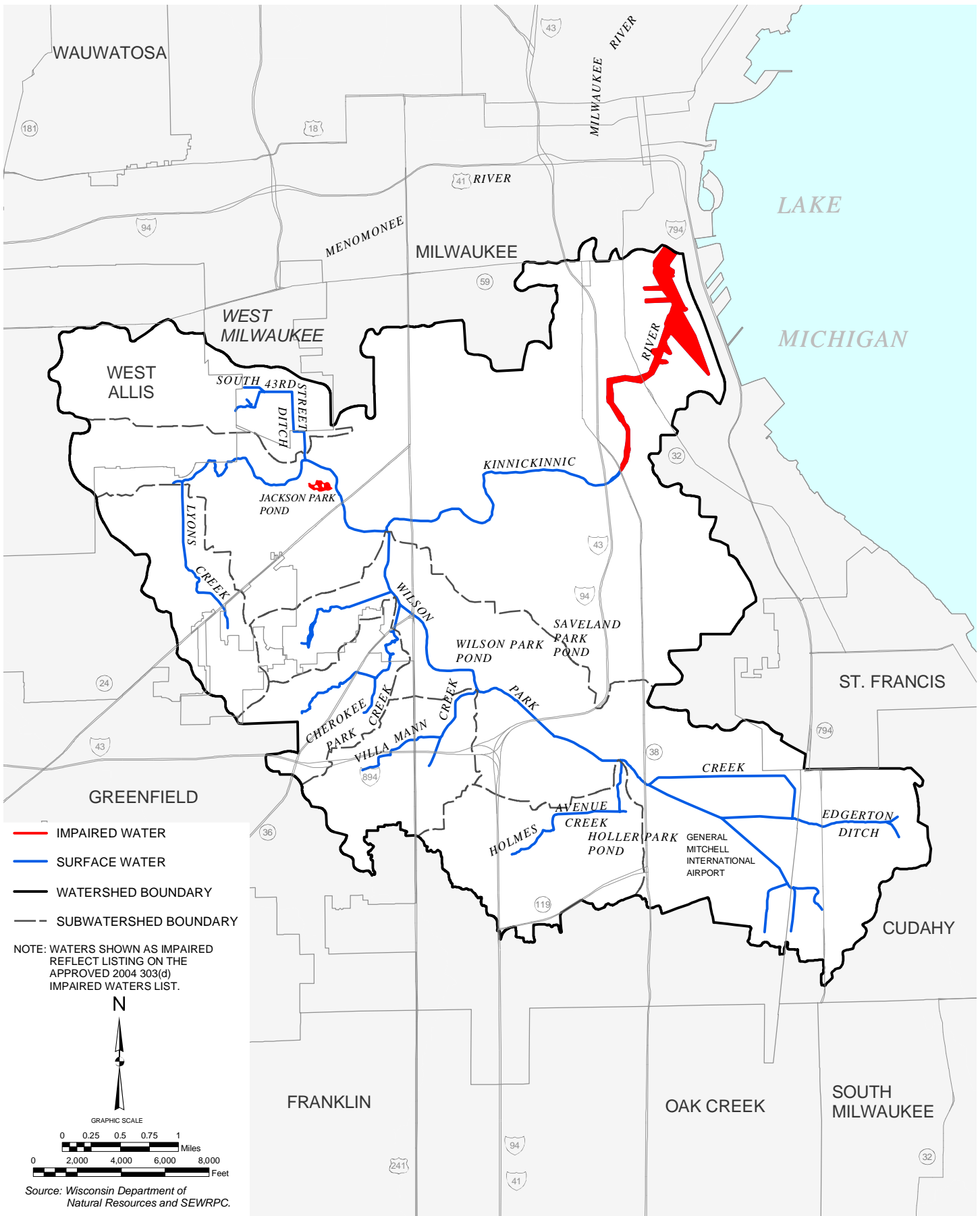
**WATER AND SEDIMENT QUALITY MONITORING STATIONS
WITHIN THE MILWAUKEE OUTER HARBOR AND ADJACENT LAKE MICHIGAN NEARSHORE AREA: 1975-2004**



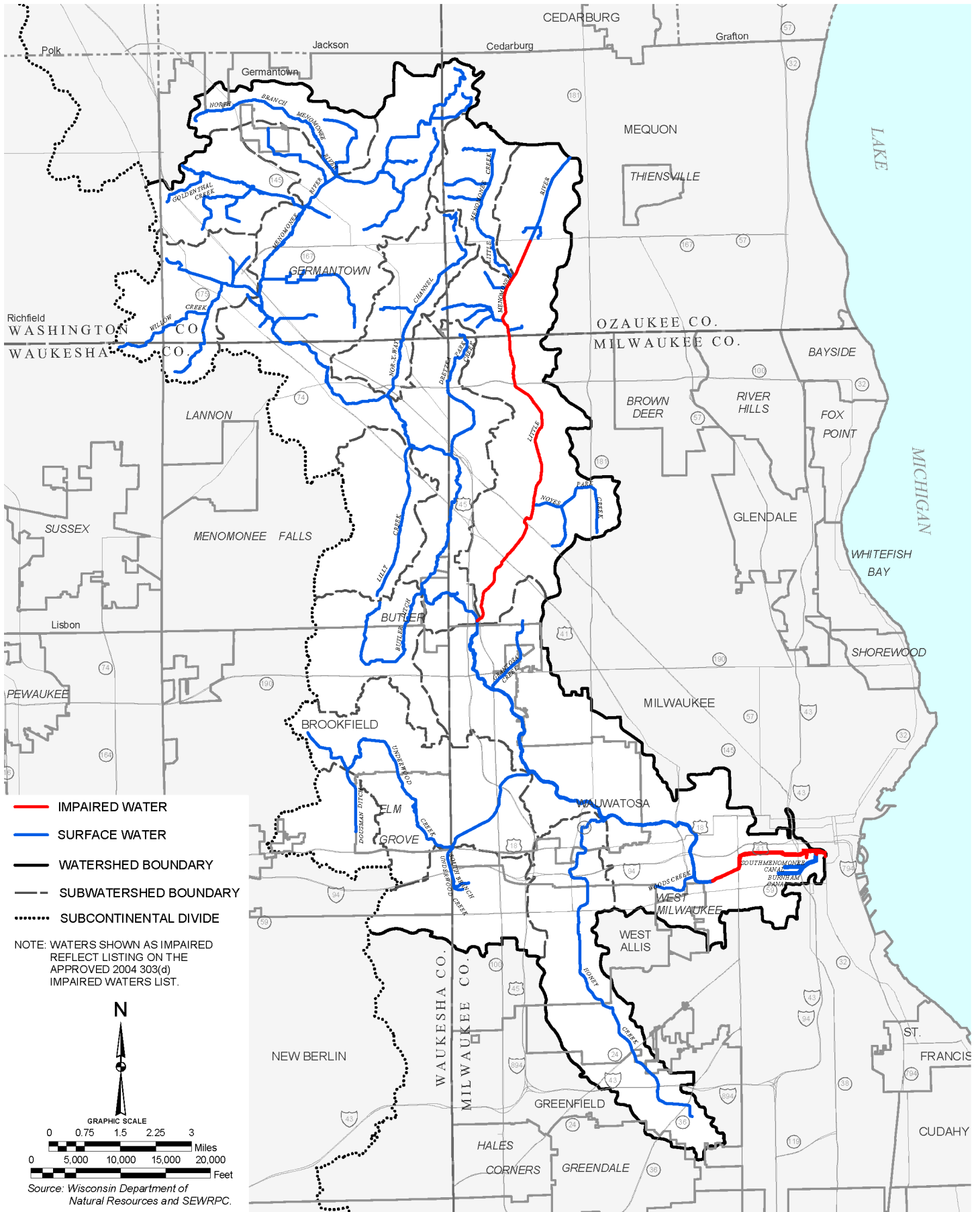
MONITORING OF BEACHES WITHIN THE AREA DIRECTLY TRIBUTARY TO LAKE MICHIGAN: 2000-2005



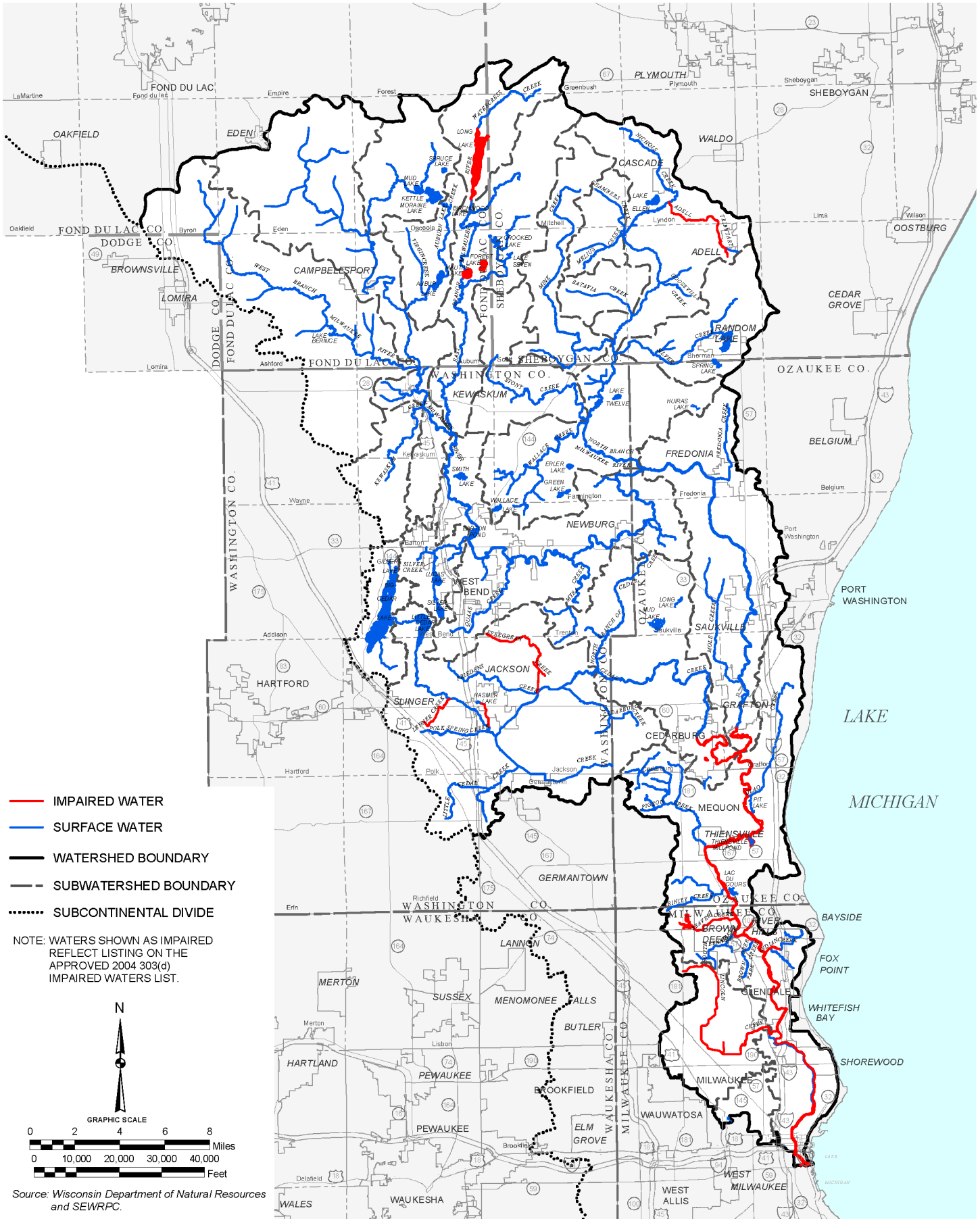
IMPAIRED WATERS WITHIN THE KINNICKINNIC RIVER WATERSHED: 2004



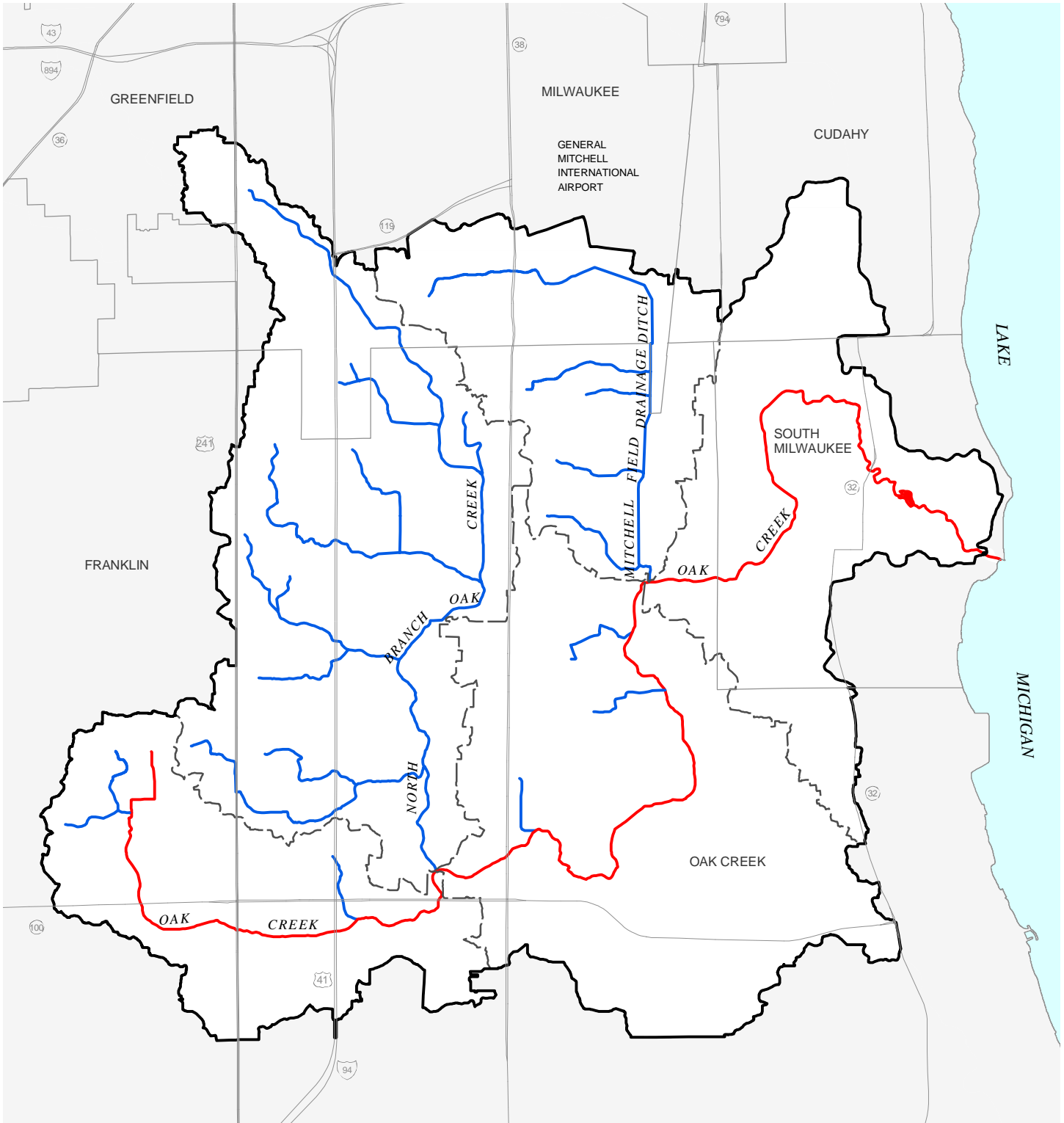
IMPAIRED WATERS WITHIN THE MEMOMONEE RIVER WATERSHED: 2004



IMPAIRED WATERS WITHIN THE MILWAUKEE RIVER WATERSHED: 2004

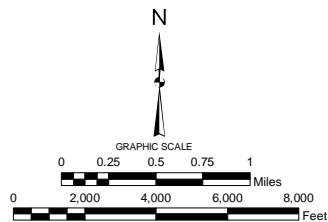


IMPAIRED WATERS WITHIN THE OAK CREEK WATERSHED: 2004



- IMPAIRED WATER
- SURFACE WATER
- WATERSHED BOUNDARY
- -** SUBWATERSHED BOUNDARY

NOTE: WATERS SHOWN AS IMPAIRED REFLECT LISTING ON THE APPROVED 2004 303(d) IMPAIRED WATERS LIST.

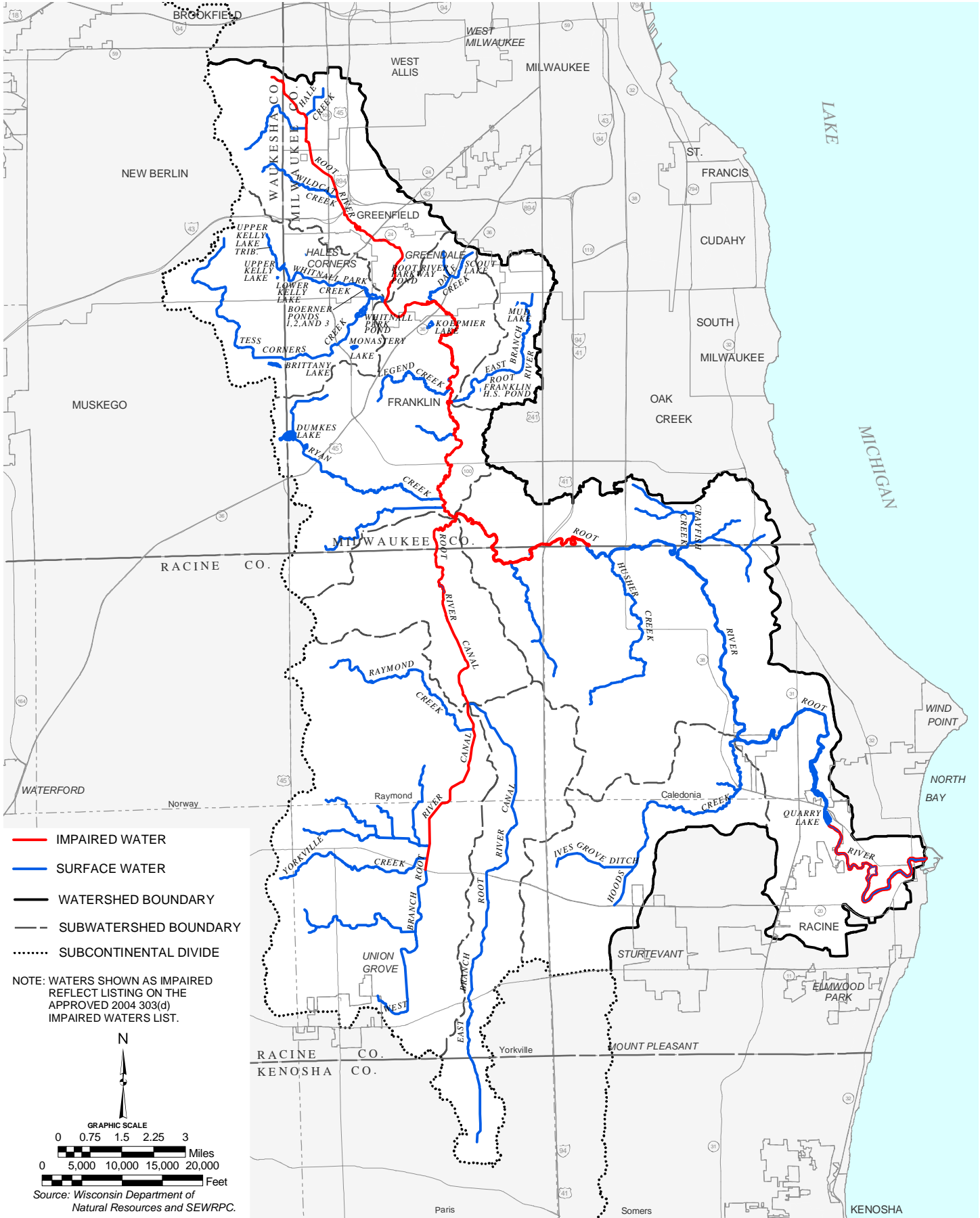


Source: Wisconsin Department of Natural Resources and SEWRPC.

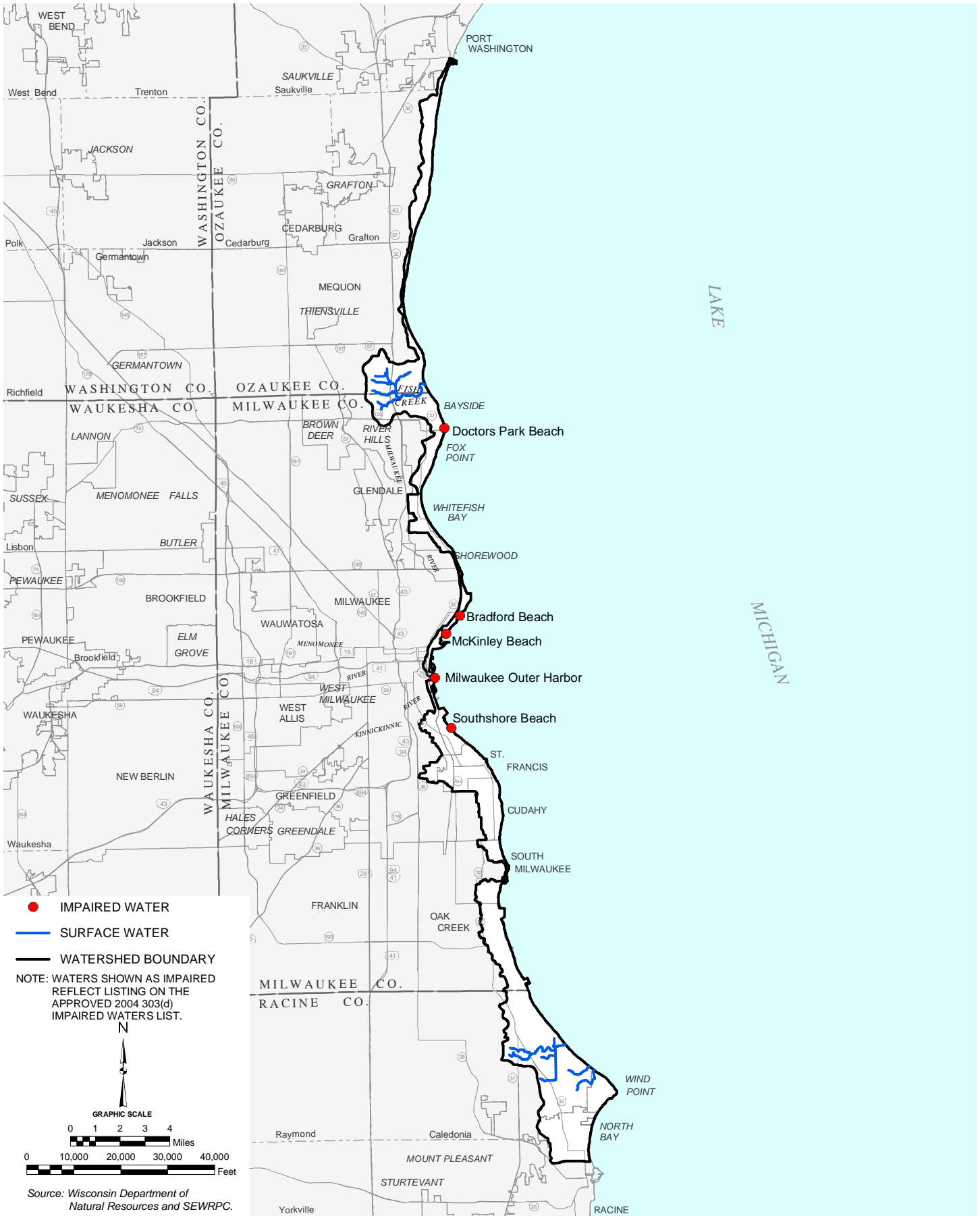
MILWAUKEE CO.
RACINE CO.

Caledonia

IMPAIRED WATERS WITHIN THE ROOT RIVER WATERSHED: 2004



IMPAIRED WATERS WITHIN THE AREA TRIBUTARY TO LAKE MICHIGAN: 2004

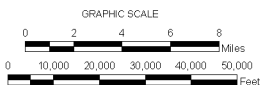
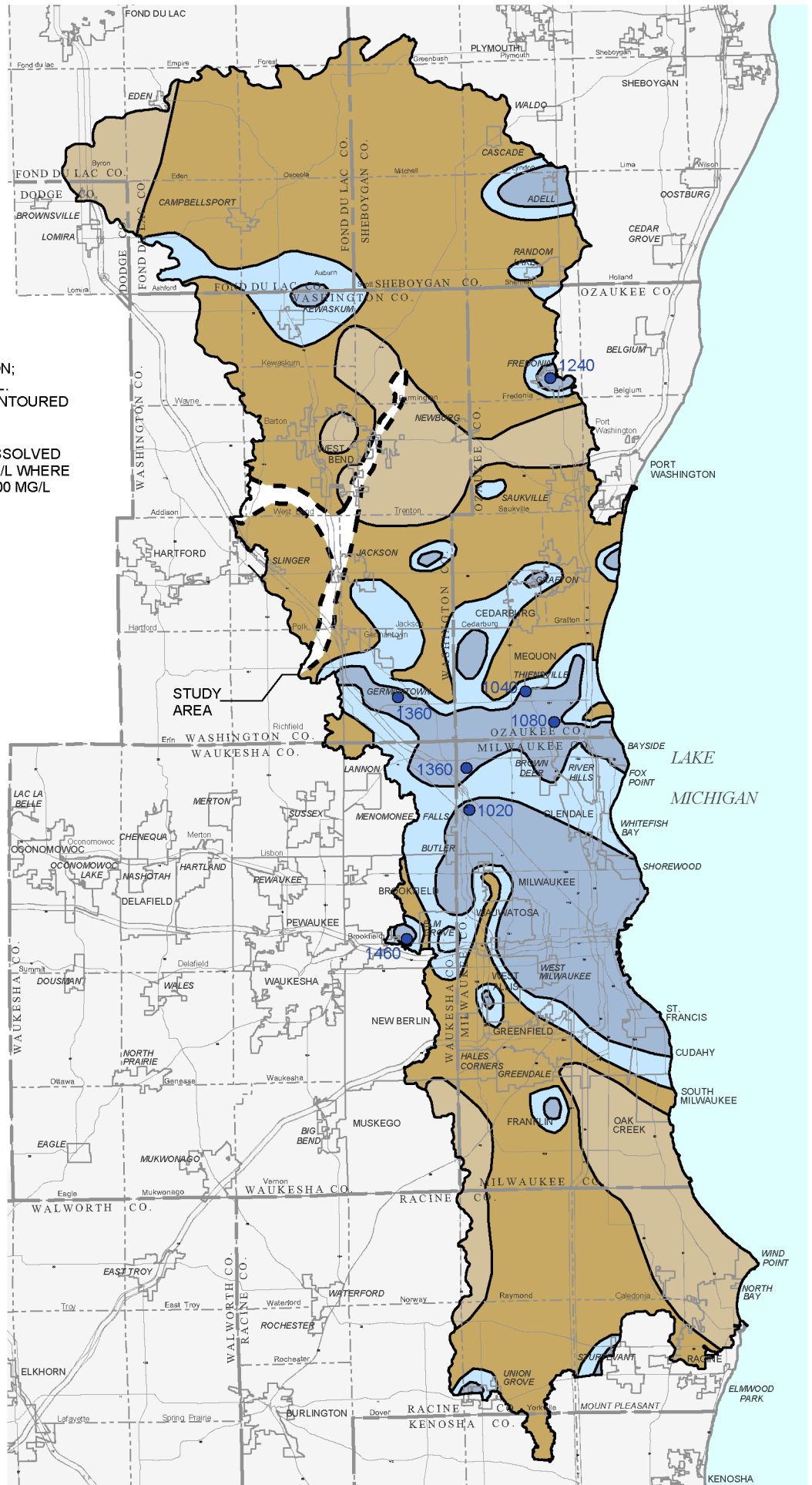


Map 35

GENERALIZED MAP OF TOTAL DISSOLVED SOLIDS CONCENTRATION IN THE SILURIAN DOLOMITE AQUIFER WITHIN THE REGIONAL WATER QUALITY MANAGEMENT PLAN UPDATE STUDY AREA

- LINE OF EQUAL CONCENTRATION; CONTOUR INTERVAL IS 100 MG/L. MAXIMUM CONCENTRATION CONTOURED IS 500 MG/L.
- 1460 WELL LOCATION AND TOTAL DISSOLVED SOLIDS CONCENTRATION IN MG/L WHERE CONCENTRATIONS EXCEED 1,000 MG/L
- - - BOUNDARY OF SILURIAN DOLOMITE AQUIFER
- 200 - 300 MG/L
- 300 - 400 MG/L
- 400 - 500 MG/L
- 500 MG/L AND MORE

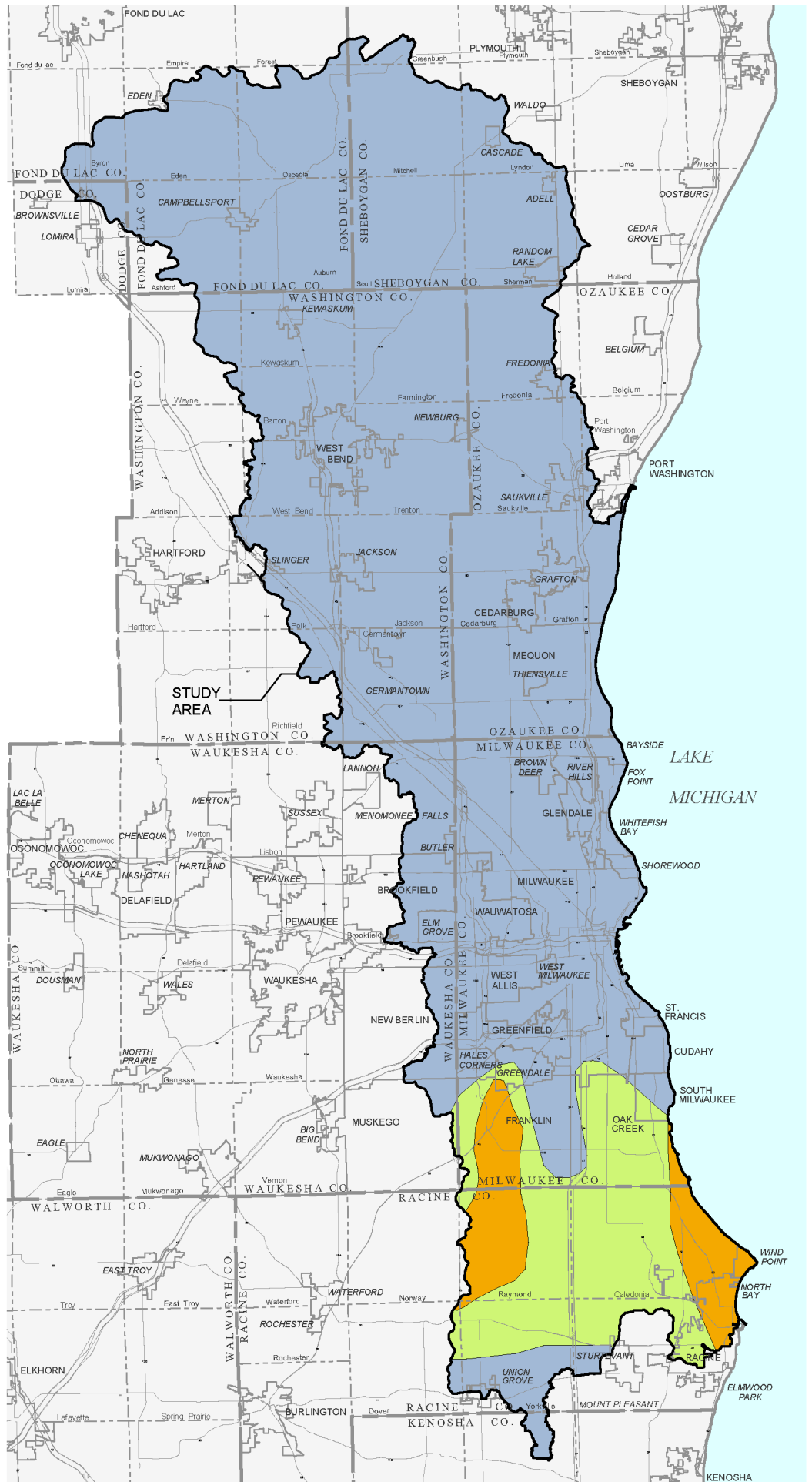
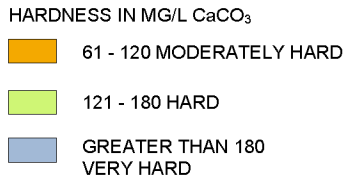
NOTE: IN GENERAL, THE DATA WITHIN THE SOUTHEASTERN WISCONSIN REGION WERE DEVELOPED BY THE WISCONSIN GEOLOGICAL AND NATURAL HISTORY SURVEY AND THE U.S. GEOLOGICAL SURVEY. THE DATA IN DODGE, FOND DU LAC, AND SHEBOYGAN COUNTIES AND IN THE VICINITY OF THE NORTHERN BOUNDARIES OF WASHINGTON AND OZAUKEE COUNTIES WERE TAKEN FROM THE U.S. GEOLOGICAL SURVEY HYDROLOGIC INVESTIGATIONS ATLAS 432, "WATER RESOURCES OF WISCONSIN - LAKE MICHIGAN BASIN, 1973".



Source: Wisconsin Geological and Natural History Survey and U.S. Geological Survey, and SEWRPC

Map 36

**AREAL DISTRIBUTION OF
HARDNESS OF GROUNDWATER
IN THE SHALLOW AQUIFERS
WITHIN THE REGIONAL WATER
QUALITY MANAGEMENT PLAN
UPDATE STUDY AREA**



Source: Wisconsin Geological and Natural History Survey.