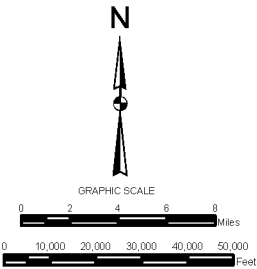
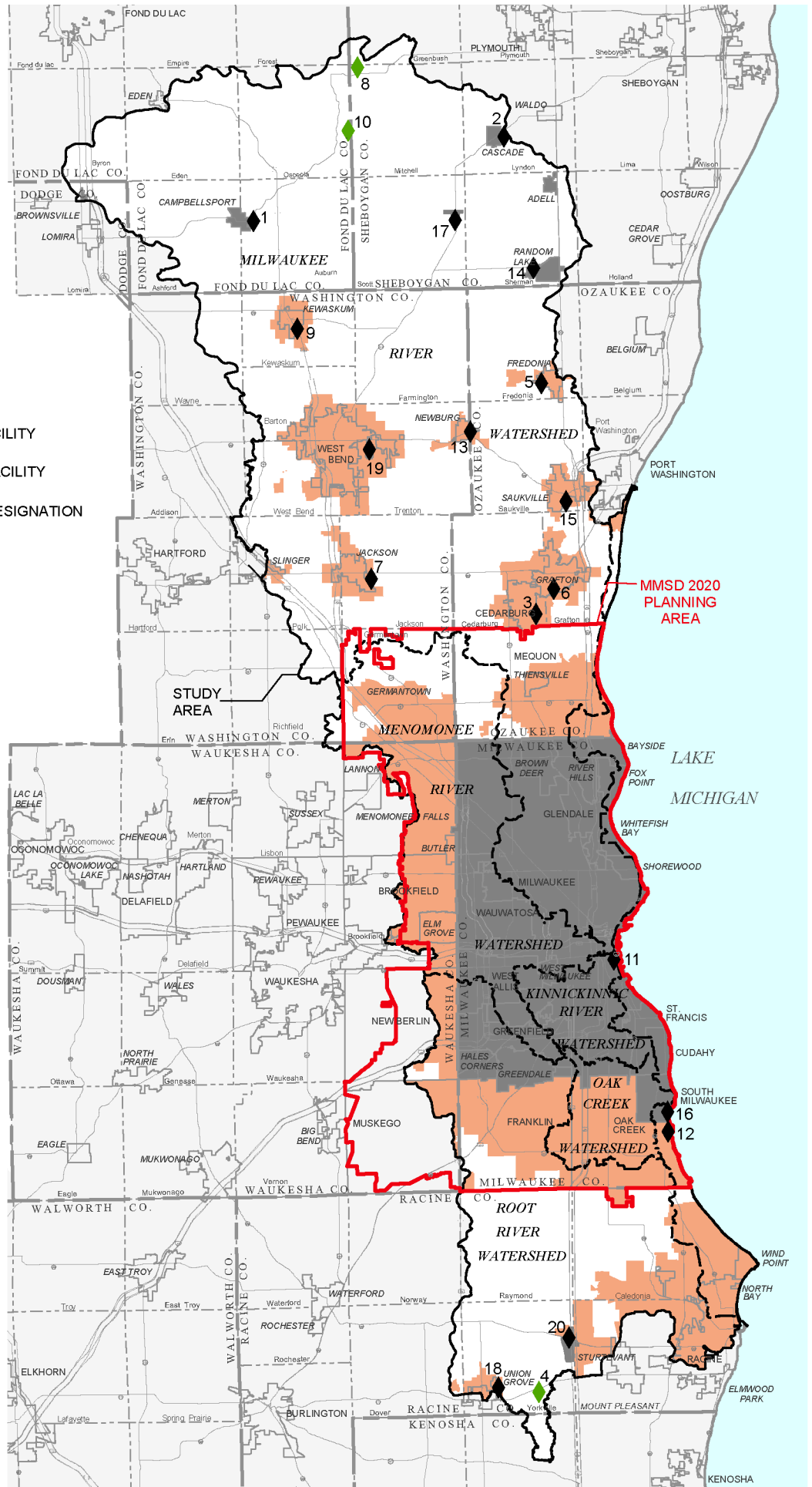


Map 37

PLANNED SEWER SERVICE AREAS WITHIN THE REGIONAL WATER QUALITY MANAGEMENT PLAN UPDATE STUDY AREA

- UNREFINED SANITARY SEWER SERVICE AREA: DECEMBER 31, 2006
- REFINED SANITARY SEWER SERVICE AREA: DECEMBER 31, 2006
- PUBLIC SEWAGE TREATMENT FACILITY
- PRIVATE SEWAGE TREATMENT FACILITY
- 9** SEWAGE TREATMENT FACILITY DESIGNATION (See Table 48)
- WATERSHED BOUNDARY

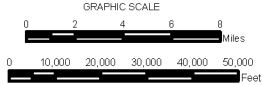
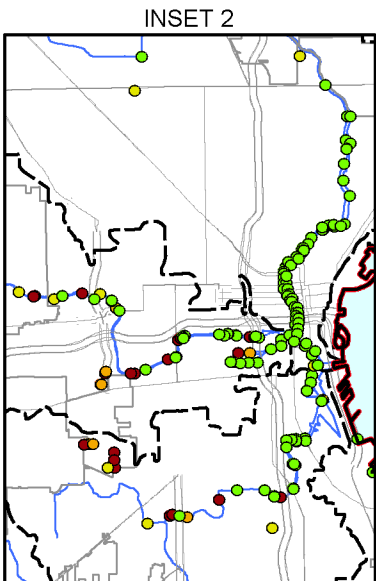
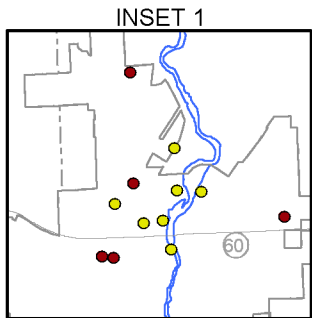


Source: SEWRPC.

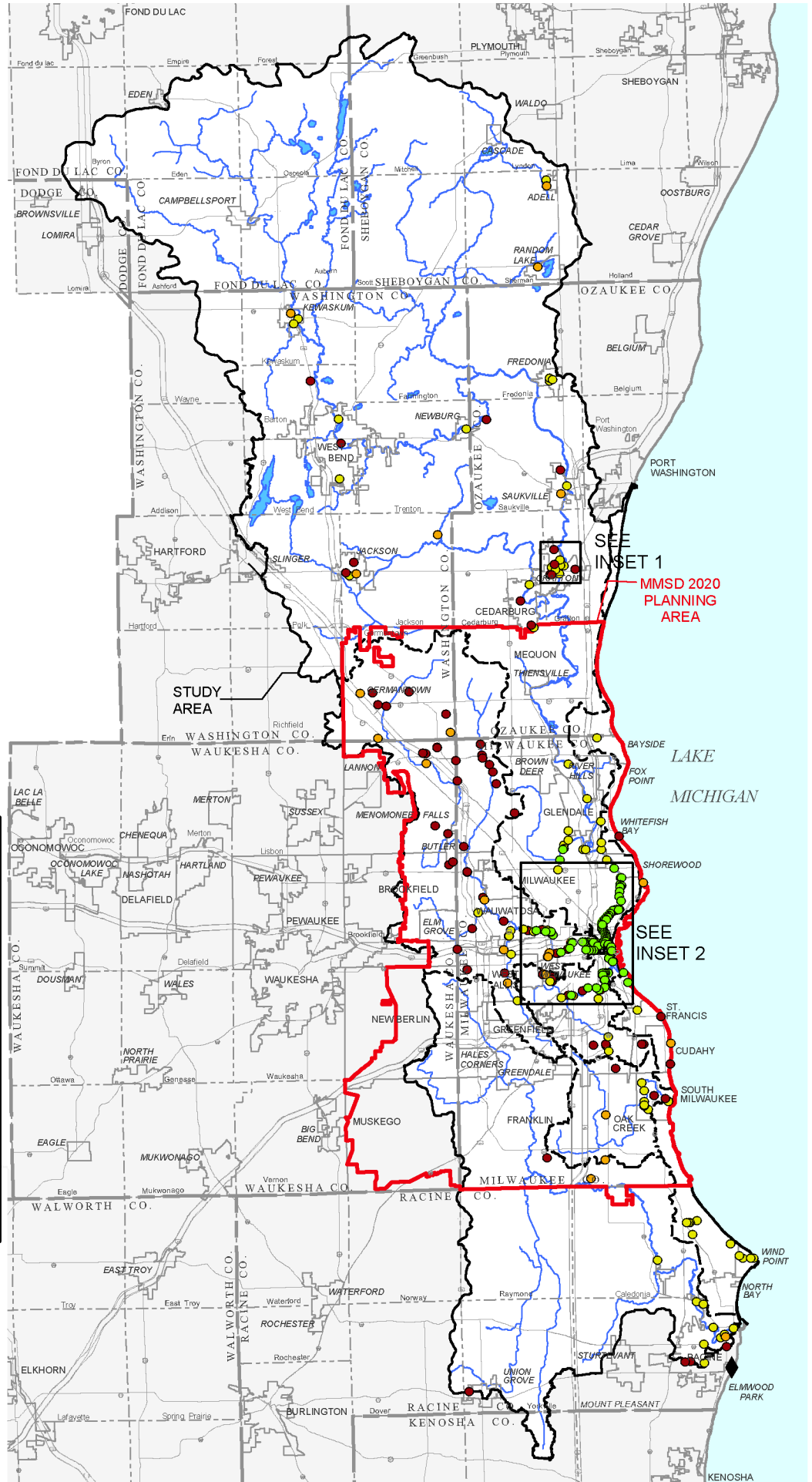
Map 38

MODELED POINT SOURCES OF POLLUTION WITHIN THE REGIONAL WATER QUALITY MANAGEMENT PLAN UPDATE STUDY AREA: 2003

- SSO LOCATIONS
- CSO OUTFALLS
- NONCONTACT COOLING WATER
- INDIVIDUAL PERMIT
- WATERSHED BOUNDARY



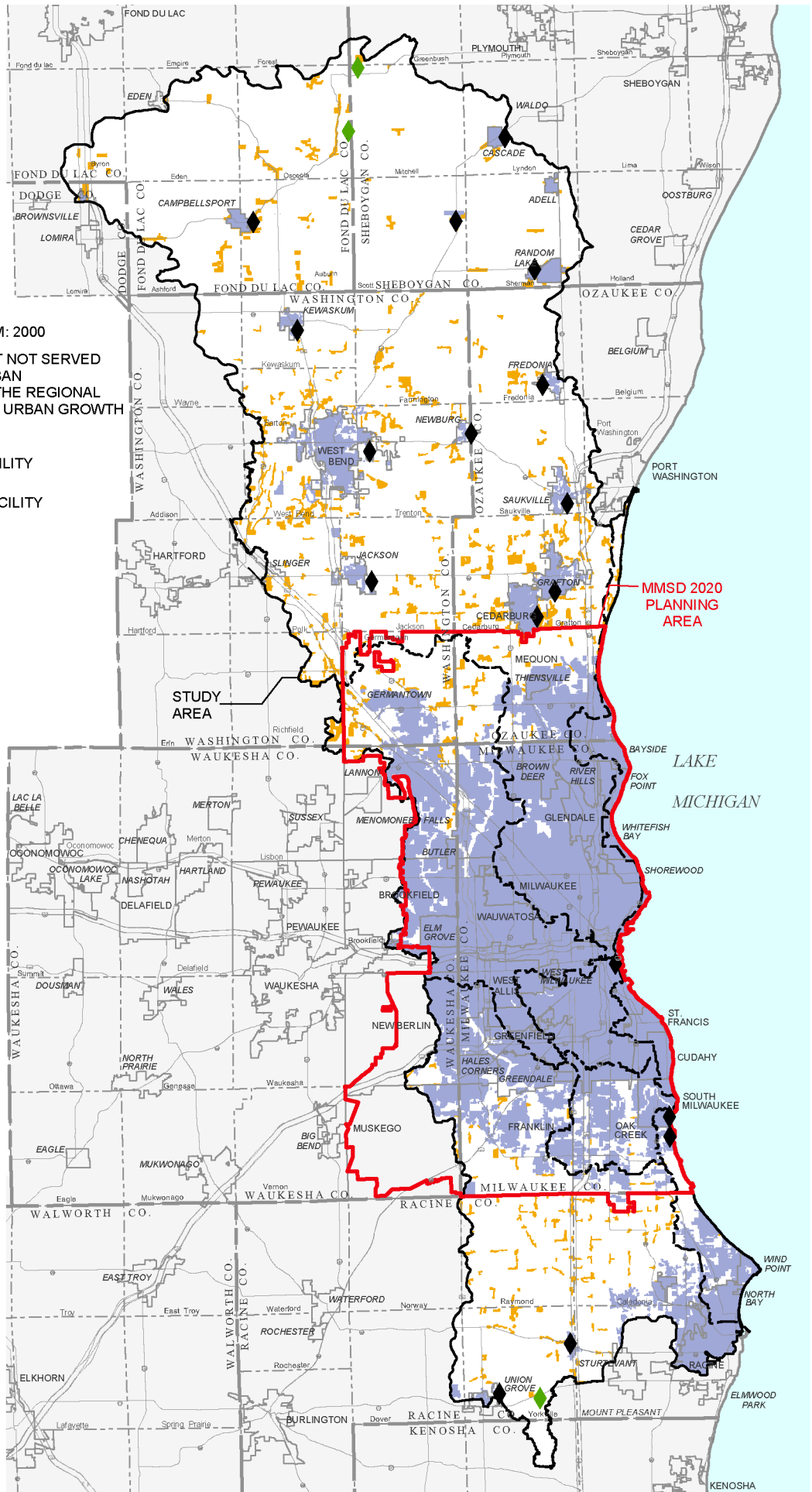
Source: SEWRPC.



Map 39

AREAS SERVED BY CENTRALIZED SANITARY SEWERAGE SYSTEMS WITHIN THE REGIONAL WATER QUALITY MANAGEMENT PLAN UPDATE STUDY AREA: 2000

- AREA SERVED BY CENTRALIZED SEWERAGE SYSTEM: 2000
- EXTENT OF URBAN DEVELOPMENT NOT SERVED BY PUBLIC SEWER: INCLUDES URBAN DEVELOPMENT AS IDENTIFIED IN THE REGIONAL PLANNING COMMISSION HISTORIC URBAN GROWTH RING ANALYSIS
- PUBLIC SEWAGE TREATMENT FACILITY
- PRIVATE SEWAGE TREATMENT FACILITY
- WATERSHED BOUNDARY

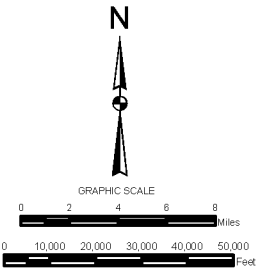
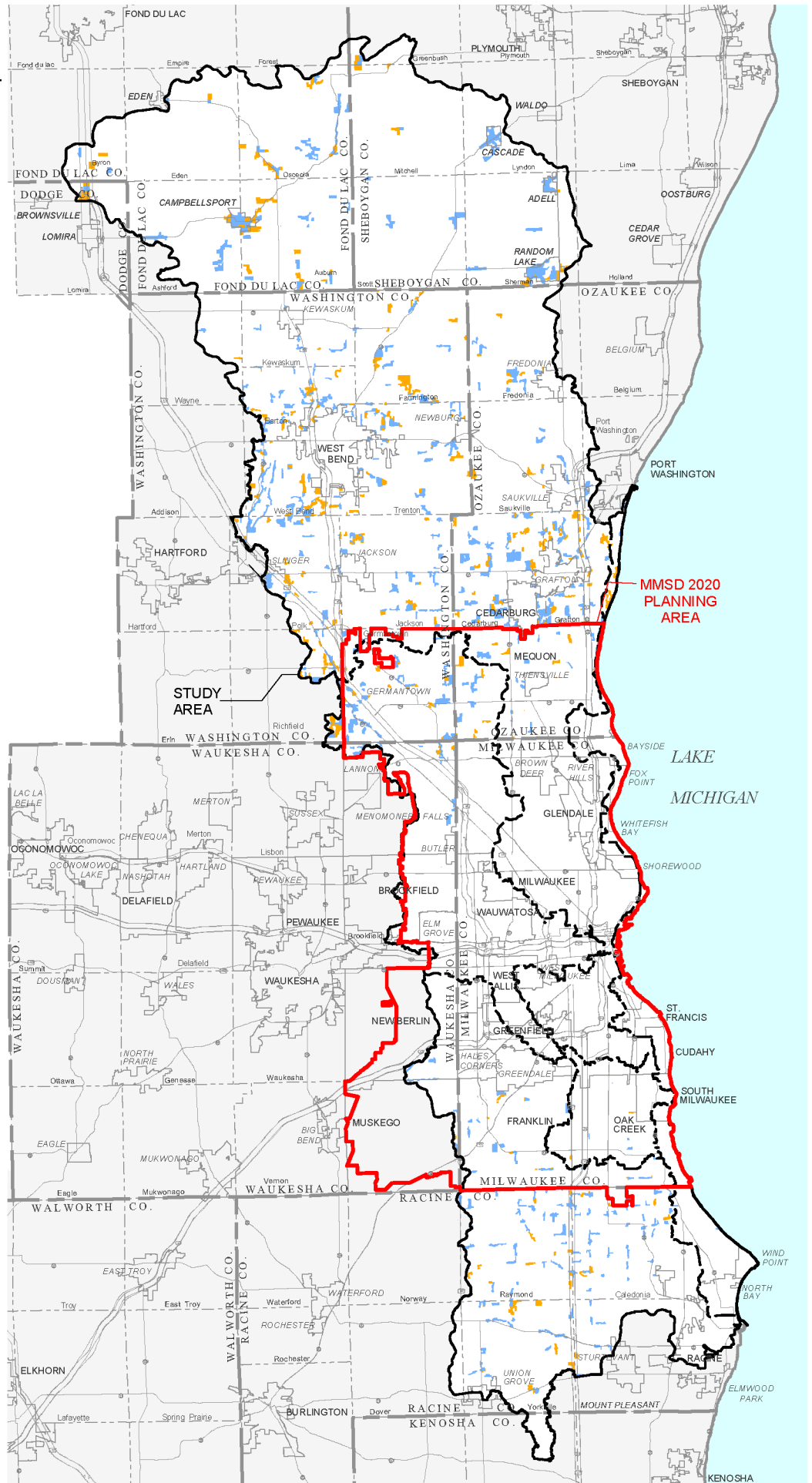


Source: SEWRPC.

Map 40

AREAS WITHIN THE REGIONAL WATER QUALITY MANAGEMENT PLAN UPDATE STUDY AREA THAT ARE SERVED BY ONSITE SEWAGE DISPOSAL SYSTEMS: 1980 AND PRIOR AND 1981 THROUGH 2000

- URBAN AREAS DEVELOPED IN 1980 OR BEFORE THAT ARE SERVED BY ONSITE SEWAGE DISPOSAL SYSTEMS
- URBAN AREAS DEVELOPED FROM 1980 THROUGH 2000 THAT ARE SERVED BY ONSITE SEWAGE DISPOSAL SYSTEMS
- WATERSHED BOUNDARY



Source: SEWRPC.

Map 41

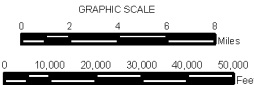
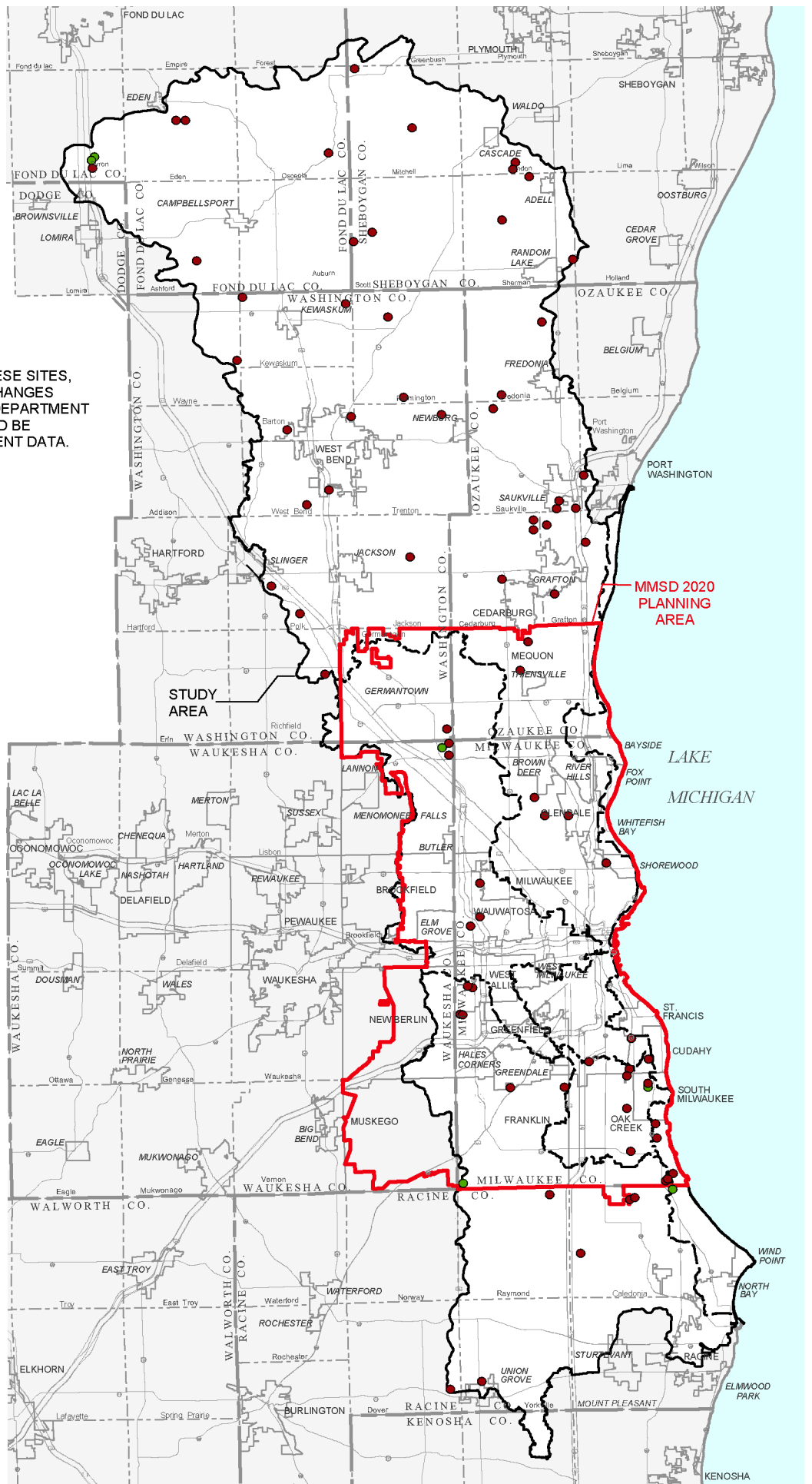
ACTIVE AND INACTIVE SOLID WASTE DISPOSAL SITES WITHIN AND ADJACENT TO THE REGIONAL WATER QUALITY MANAGEMENT PLAN UPDATE STUDY AREA: 2005

● ACTIVE SITE

● INACTIVE SITE

— WATERSHED BOUNDARY

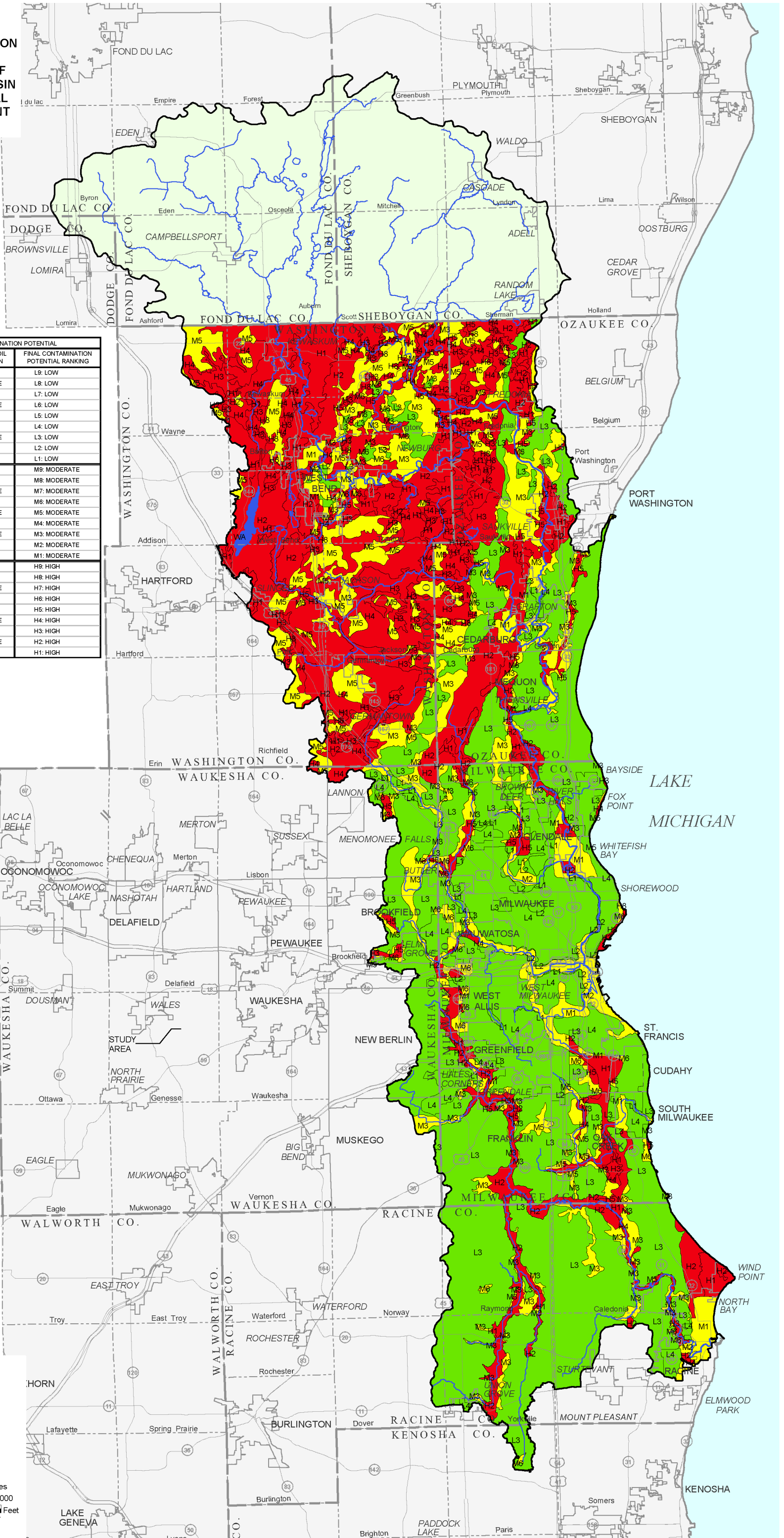
NOTE: BECAUSE OF THE NATURE OF THESE SITES, THE INVENTORY INFORMATION CHANGES PERIODICALLY. THE WISCONSIN DEPARTMENT OF NATURAL RESOURCES SHOULD BE CONTACTED FOR THE MOST RECENT DATA.



Source: Wisconsin Department of Natural Resources and SEWRPC.

Map 42

GROUNDWATER CONTAMINATION POTENTIAL OF SHALLOW AQUIFERS IN THE PORTION OF THE SOUTHEASTERN WISCONSIN REGION WITHIN THE REGIONAL WATER QUALITY MANAGEMENT PLAN UPDATE STUDY AREA



COMBINATION OF PARAMETERS FOR CONTAMINATION POTENTIAL			
DEPTH TO AQUIFER IN FEET	ESTIMATED PERMEABILITY	ESTIMATED SOIL PERCOLATION	FINAL CONTAMINATION POTENTIAL RANKING
GREATER THAN 50	LOW	LOW	L9: LOW
GREATER THAN 50	LOW	MODERATE	L8: LOW
GREATER THAN 50	MODERATE	LOW	L7: LOW
GREATER THAN 50	MODERATE	MODERATE	L6: LOW
GREATER THAN 50	HIGH	LOW	L5: LOW
25 TO 50	LOW	LOW	L4: LOW
25 TO 50	LOW	MODERATE	L3: LOW
25 TO 50	MODERATE	LOW	L2: LOW
LESS THAN 25	LOW	LOW	L1: LOW
GREATER THAN 50	LOW	HIGH	M9: MODERATE
GREATER THAN 50	MODERATE	HIGH	M8: MODERATE
GREATER THAN 50	HIGH	MODERATE	M7: MODERATE
25 TO 50	LOW	HIGH	M6: MODERATE
25 TO 50	MODERATE	MODERATE	M5: MODERATE
25 TO 50	HIGH	LOW	M4: MODERATE
LESS THAN 25	LOW	MODERATE	M3: MODERATE
LESS THAN 25	MODERATE	LOW	M2: MODERATE
LESS THAN 25	HIGH	LOW	M1: MODERATE
GREATER THAN 50	HIGH	HIGH	H9: HIGH
25 TO 50	MODERATE	HIGH	H8: HIGH
25 TO 50	HIGH	MODERATE	H7: HIGH
25 TO 50	HIGH	HIGH	H6: HIGH
LESS THAN 25	LOW	HIGH	H5: HIGH
LESS THAN 25	MODERATE	MODERATE	H4: HIGH
LESS THAN 25	MODERATE	HIGH	H3: HIGH
LESS THAN 25	HIGH	MODERATE	H2: HIGH
LESS THAN 25	HIGH	HIGH	H1: HIGH

- GROUNDWATER CONTAMINATION POTENTIAL**
- HIGH
 - MODERATE
 - LOW
 - SURFACE WATER
 - AREA FOR WHICH GROUNDWATER CONTAMINATION POTENTIAL HAS NOT YET BEEN DETERMINED

GRAPHIC SCALE

0 2 4 6 8 Miles

0 10,000 20,000 30,000 40,000 50,000 Feet

Source: Wisconsin Geological and Natural History Survey and SEWRPC.