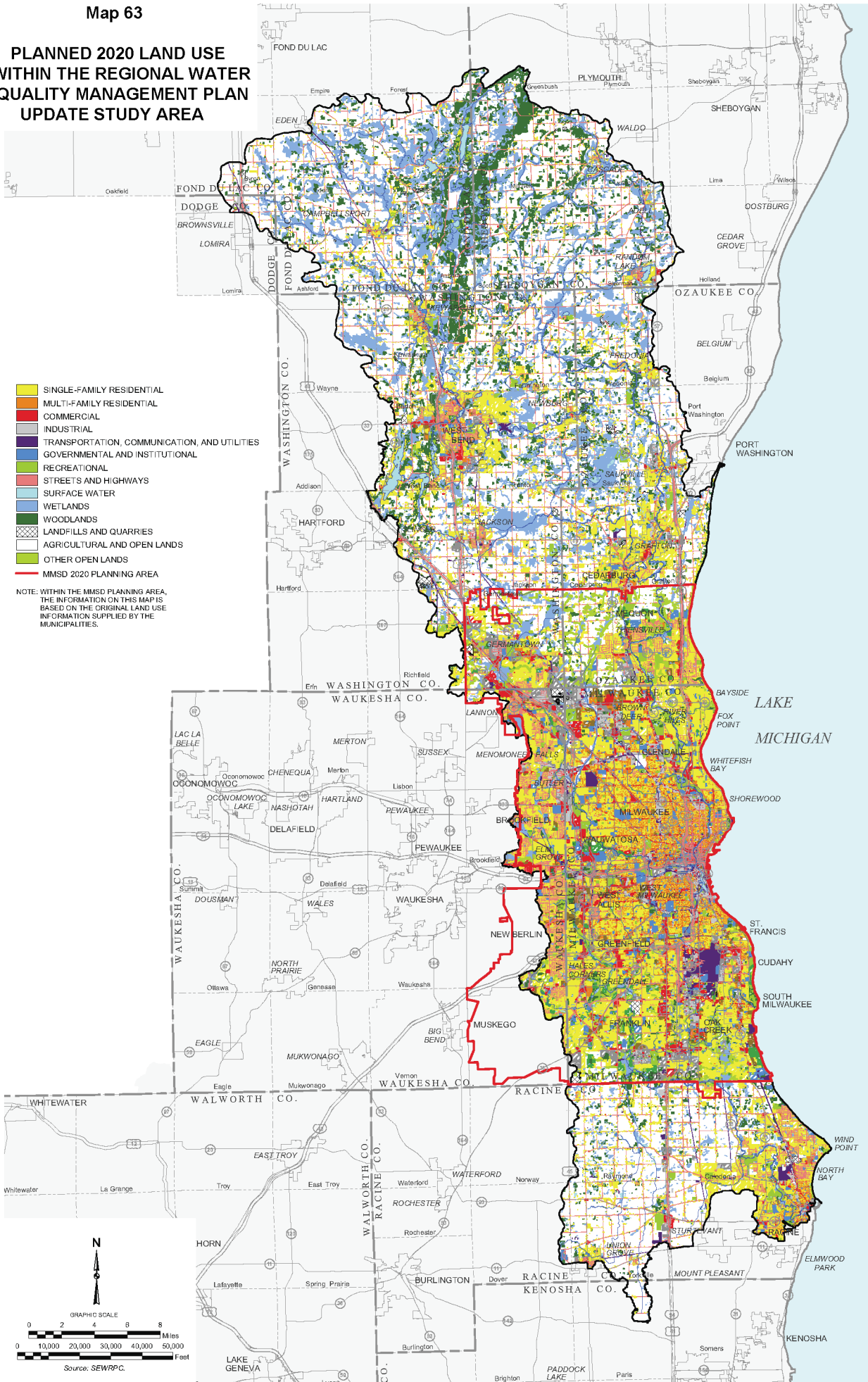
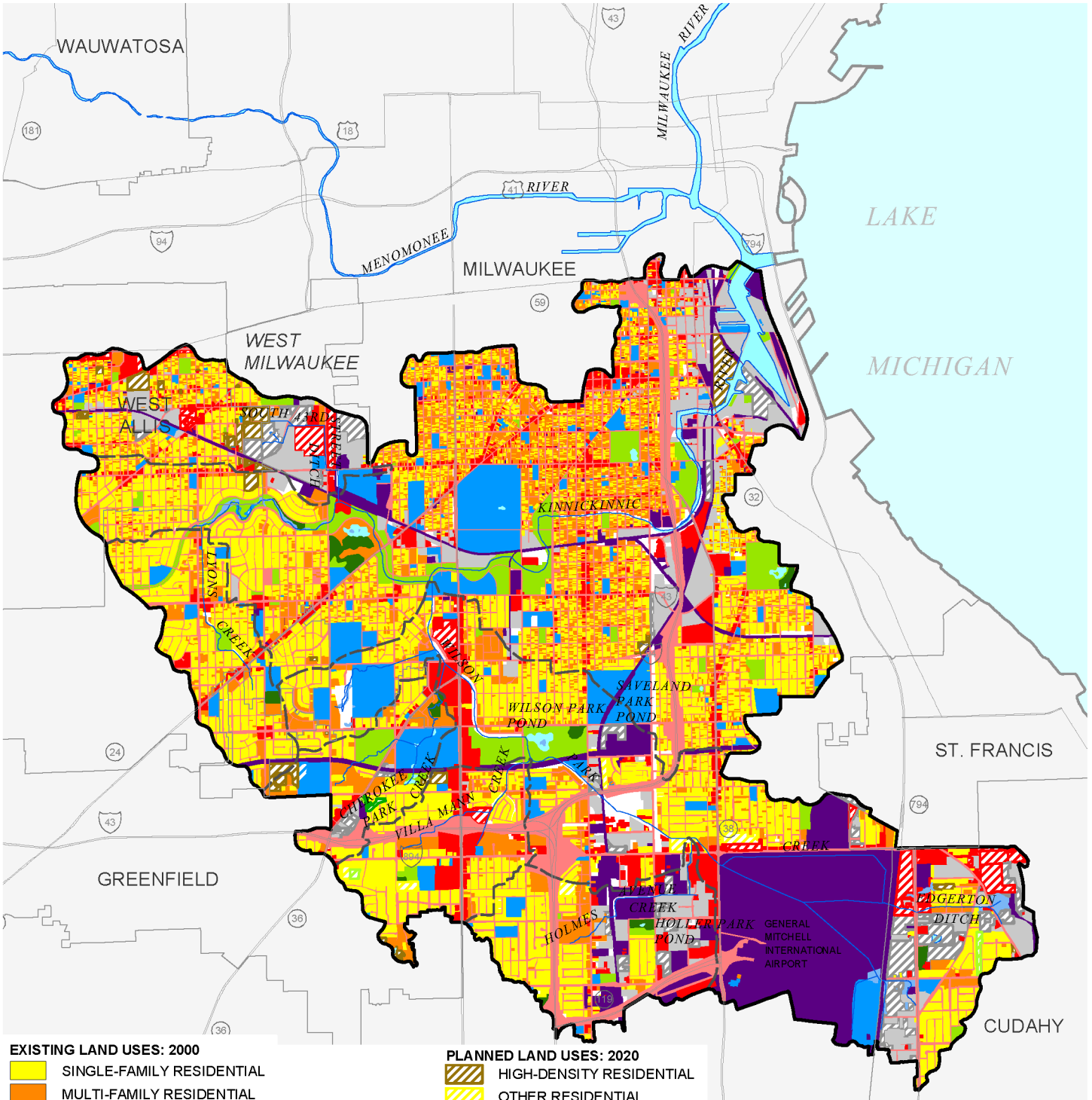


**PLANNED 2020 LAND USE
WITHIN THE REGIONAL WATER
QUALITY MANAGEMENT PLAN
UPDATE STUDY AREA**



NOTE: WITHIN THE MMSD PLANNING AREA, THE INFORMATION ON THIS MAP IS BASED ON THE ORIGINAL LAND USE INFORMATION SUPPLIED BY THE MUNICIPALITIES.

PLANNED LAND USE WITHIN THE KINNICKINNIC RIVER WATERSHED: 2020



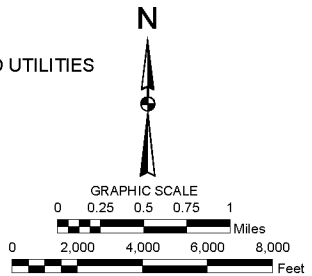
EXISTING LAND USES: 2000

- SINGLE-FAMILY RESIDENTIAL
- MULTI-FAMILY RESIDENTIAL
- COMMERCIAL
- INDUSTRIAL
- TRANSPORTATION, COMMUNICATION, AND UTILITIES
- GOVERNMENTAL AND INSTITUTIONAL
- RECREATIONAL
- STREETS AND HIGHWAYS
- SURFACE WATER
- WETLANDS
- WOODLANDS
- LANDFILLS AND QUARRIES
- AGRICULTURAL AND OPEN LANDS

PLANNED LAND USES: 2020

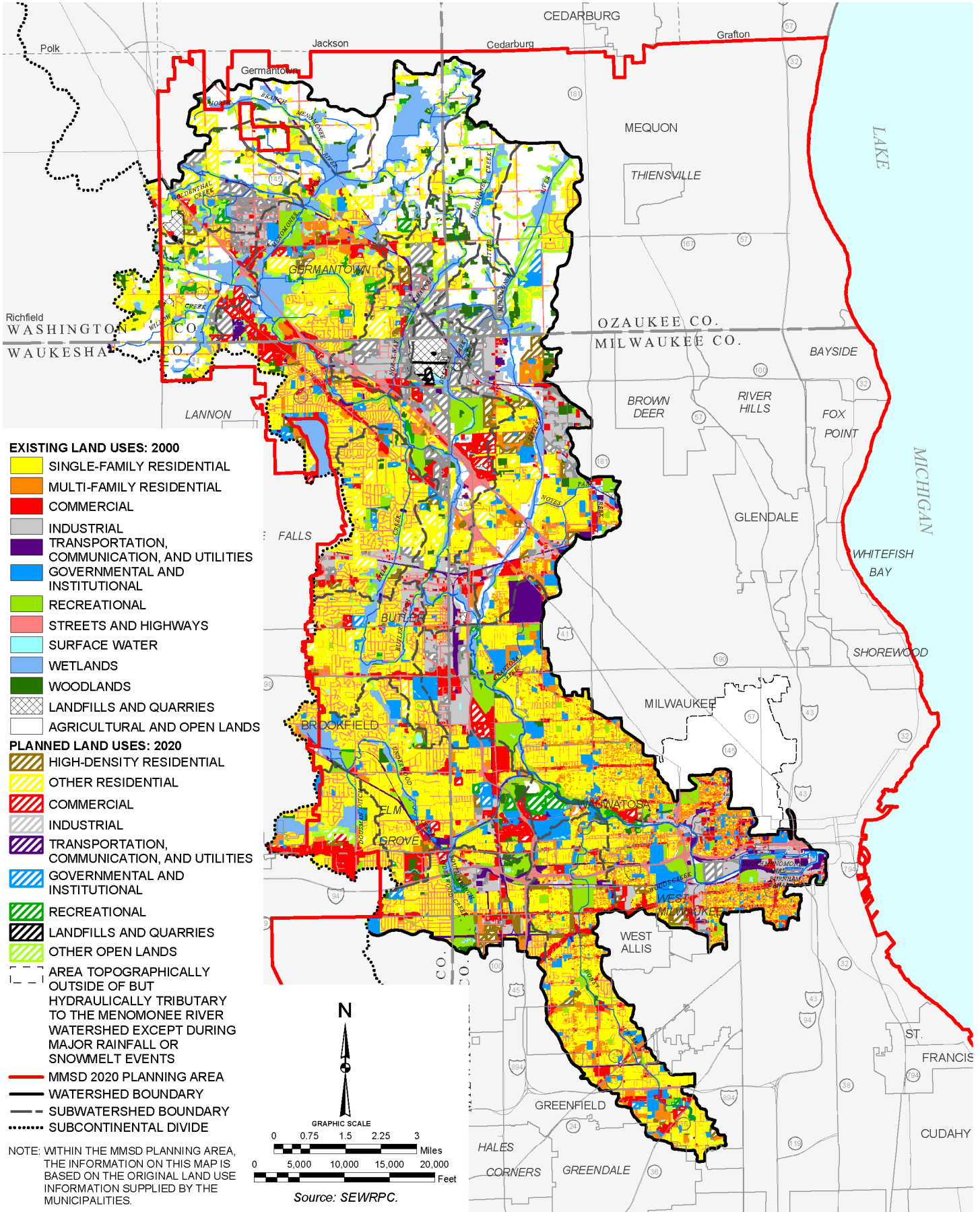
- HIGH-DENSITY RESIDENTIAL
- OTHER RESIDENTIAL
- COMMERCIAL
- INDUSTRIAL
- TRANSPORTATION, COMMUNICATION, AND UTILITIES
- GOVERNMENTAL AND INSTITUTIONAL
- RECREATIONAL
- LANDFILLS AND QUARRIES
- OTHER OPEN LANDS
- WATERSHED BOUNDARY
- SUBWATERSHED BOUNDARY

NOTE: THE INFORMATION ON THIS MAP IS BASED ON THE ORIGINAL LAND USE INFORMATION SUPPLIED BY THE MUNICIPALITIES.

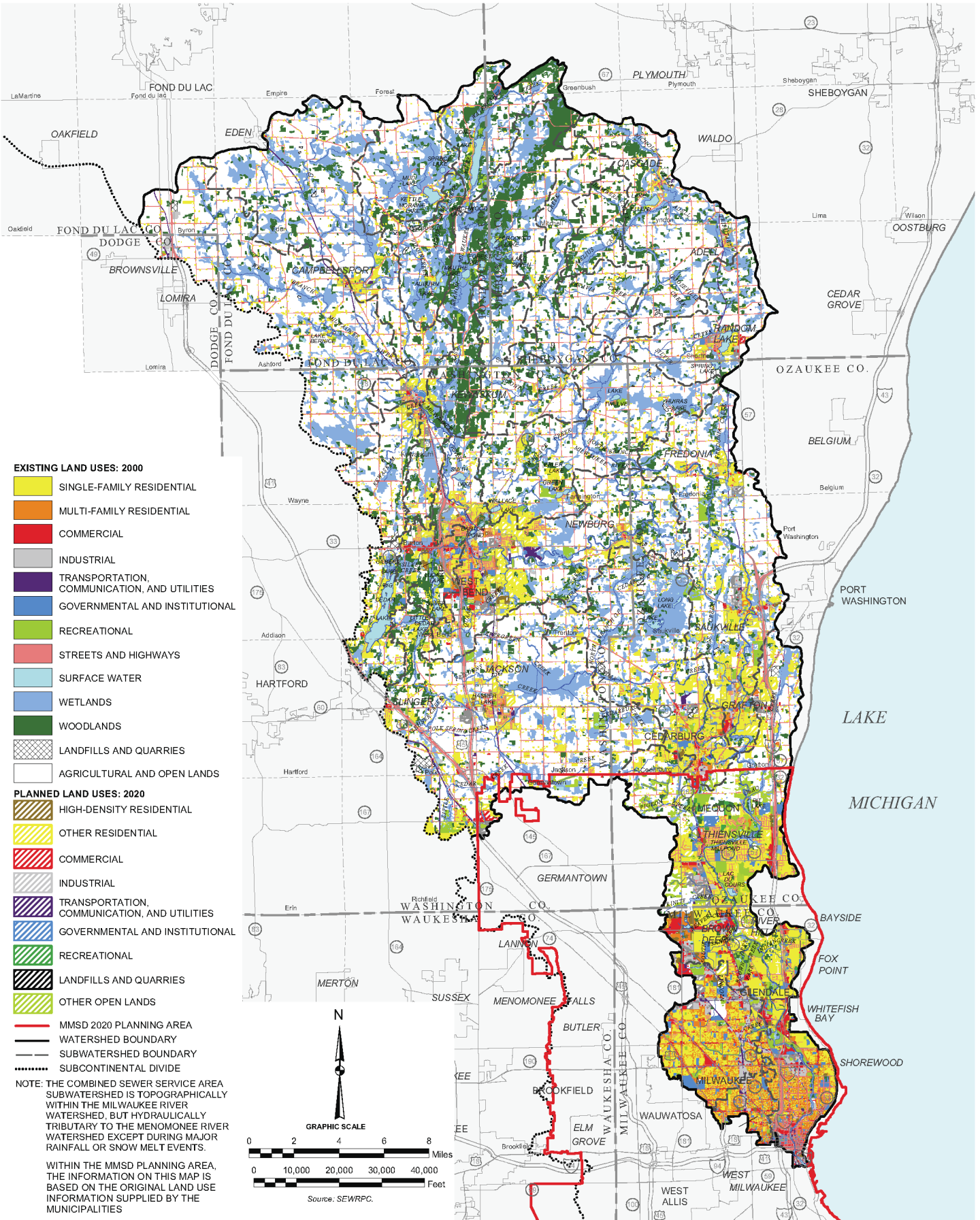


Source: SEWRPC.

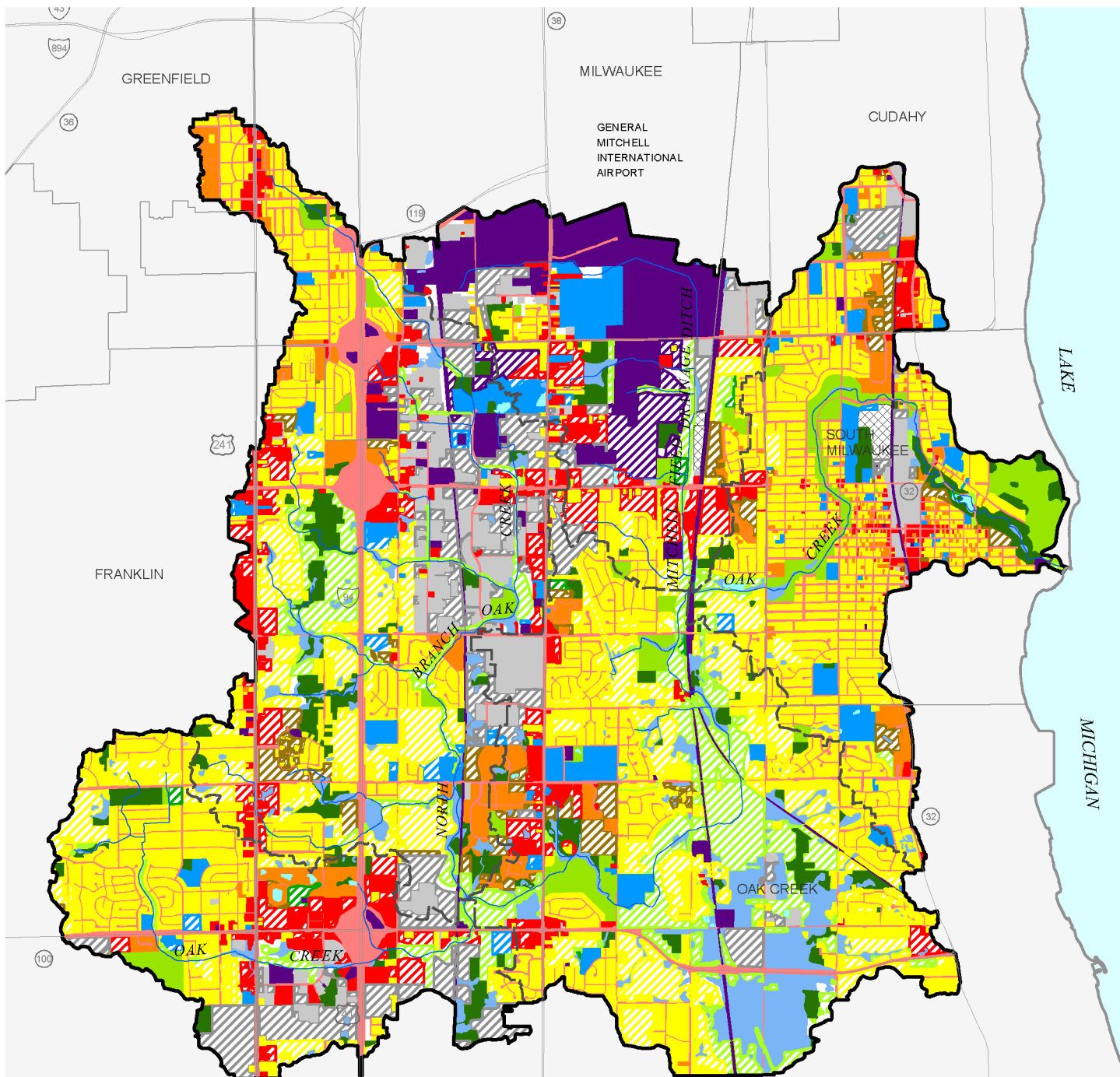
PLANNED LAND USE WITHIN THE MEMOMONEE RIVER WATERSHED: 2020



PLANNED LAND USE WITHIN THE MILWAUKEE RIVER WATERSHED: 2020



PLANNED LAND USE WITHIN THE OAK CREEK WATERSHED: 2020

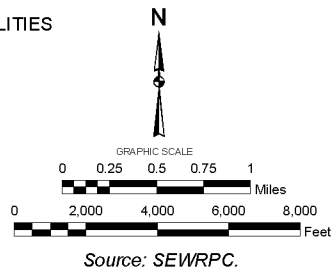


EXISTING LAND USES: 2000

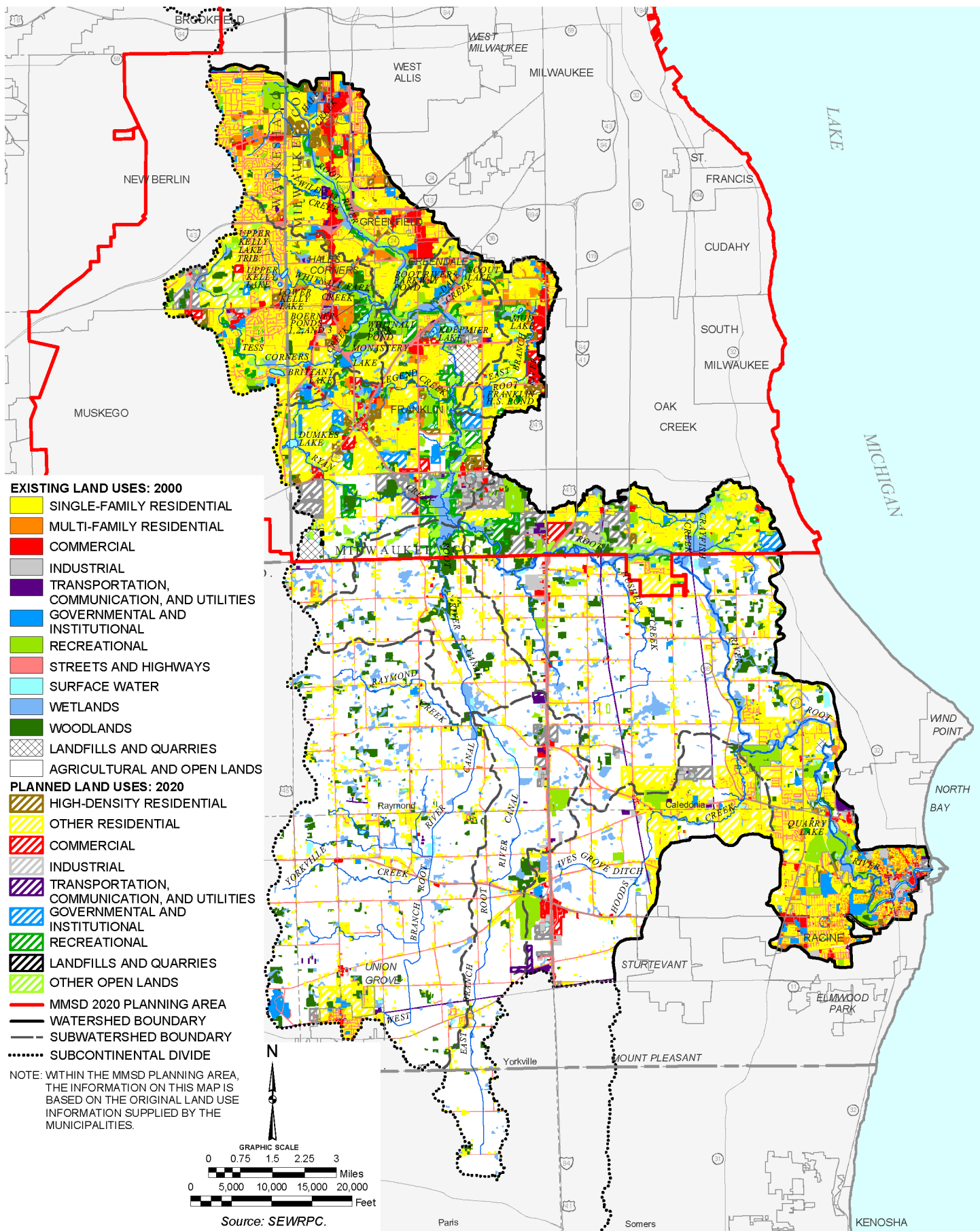
- SINGLE-FAMILY RESIDENTIAL
- MULTI-FAMILY RESIDENTIAL
- COMMERCIAL
- INDUSTRIAL
- TRANSPORTATION, COMMUNICATION, AND UTILITIES
- GOVERNMENTAL AND INSTITUTIONAL
- RECREATIONAL
- STREETS AND HIGHWAYS
- SURFACE WATER
- WETLANDS
- WOODLANDS
- LANDFILLS AND QUARRIES
- AGRICULTURAL AND OPEN LANDS

PLANNED LAND USES: 2020

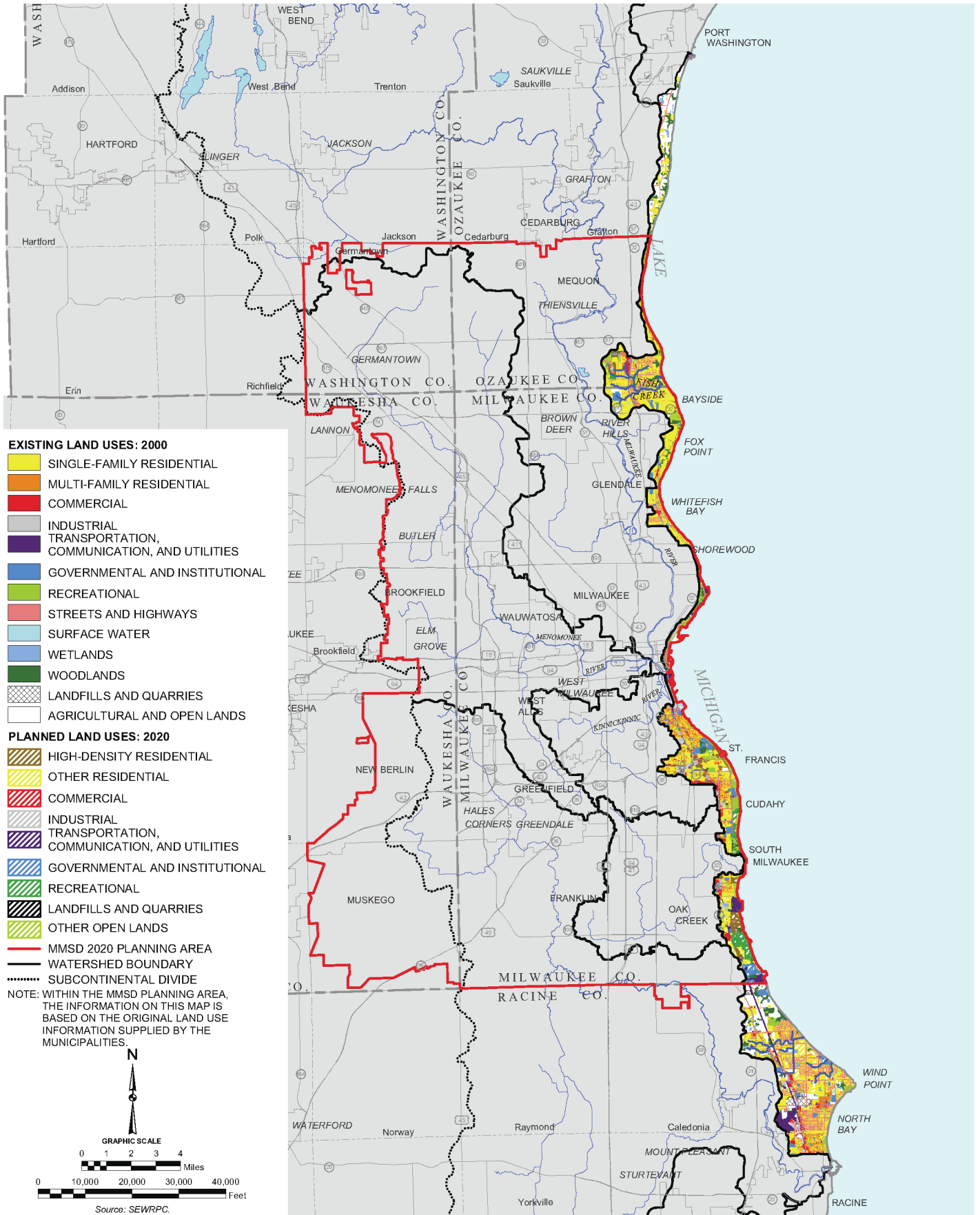
- HIGH-DENSITY RESIDENTIAL
 - OTHER RESIDENTIAL
 - COMMERCIAL
 - INDUSTRIAL
 - TRANSPORTATION, COMMUNICATION, AND UTILITIES
 - GOVERNMENTAL AND INSTITUTIONAL
 - RECREATIONAL
 - LANDFILLS AND QUARRIES
 - OTHER OPEN LANDS
 - WATERSHED BOUNDARY
 - SUBWATERSHED BOUNDARY
- NOTE: THE INFORMATION ON THIS MAP IS BASED ON THE ORIGINAL LAND USE INFORMATION SUPPLIED BY THE MUNICIPALITIES.



PLANNED LAND USE WITHIN THE ROOT RIVER WATERSHED: 2020

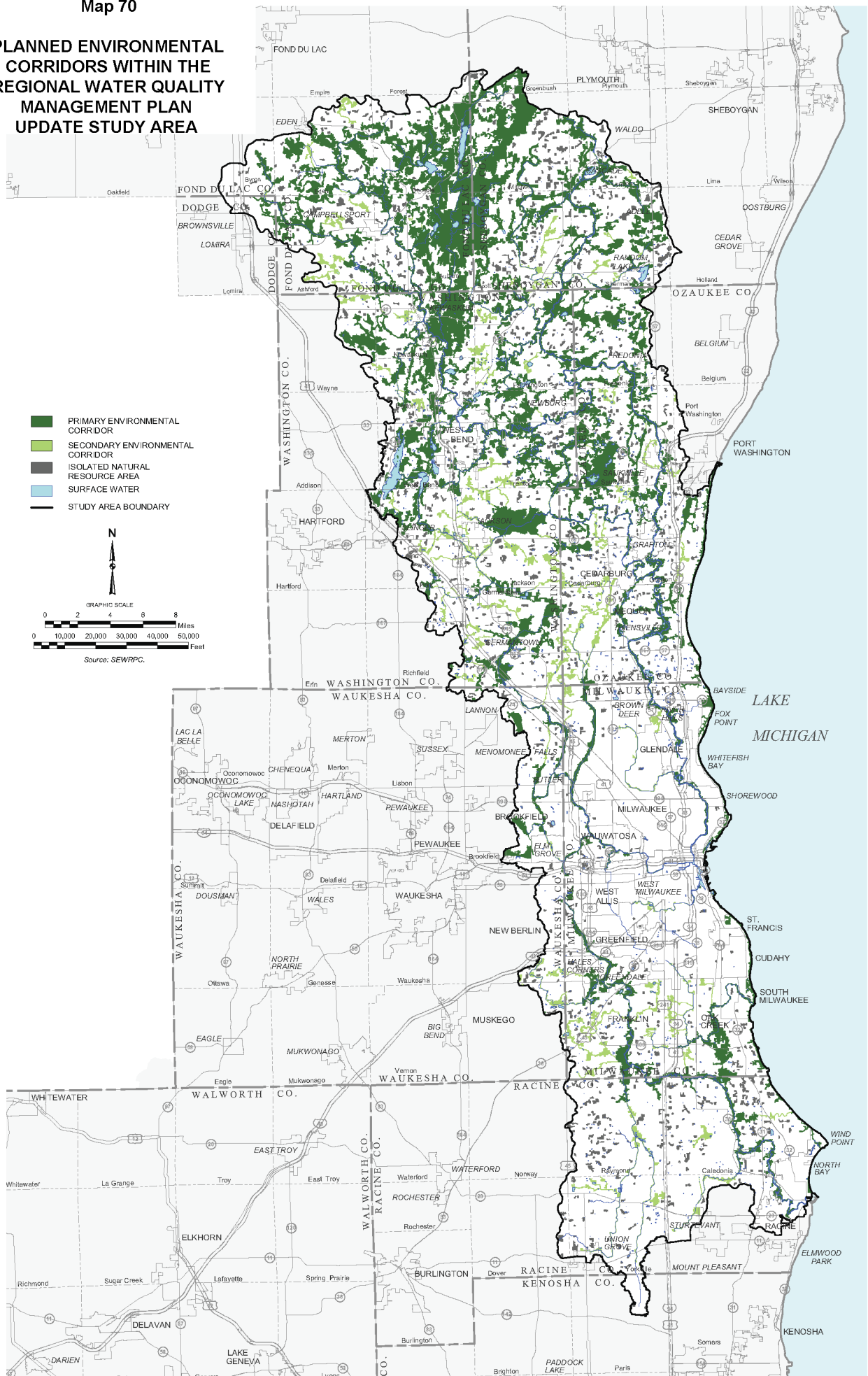


PLANNED LAND USE WITHIN THE AREA DIRECTLY TRIBUTARY TO LAKE MICHIGAN

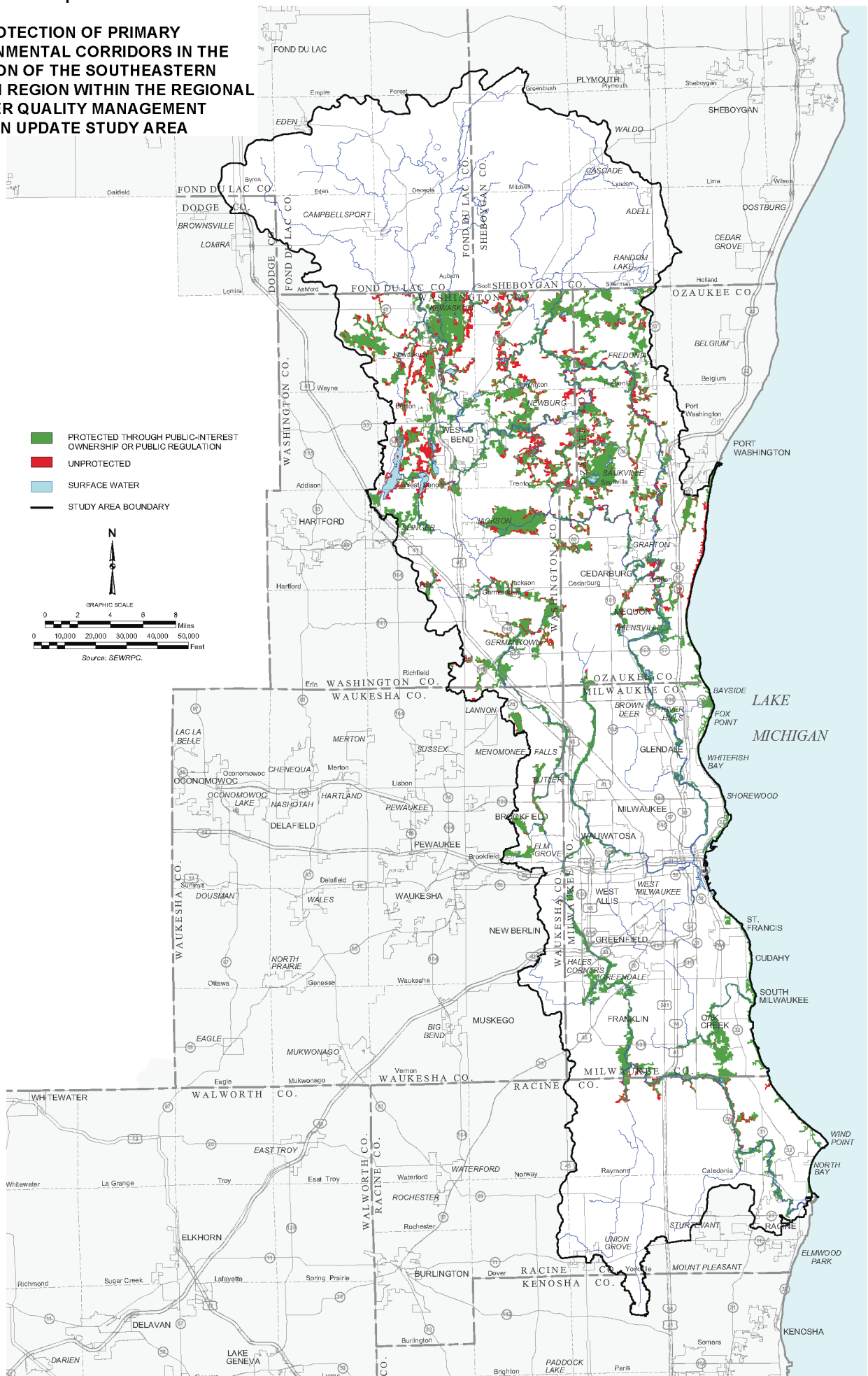


Map 70

PLANNED ENVIRONMENTAL CORRIDORS WITHIN THE REGIONAL WATER QUALITY MANAGEMENT PLAN UPDATE STUDY AREA

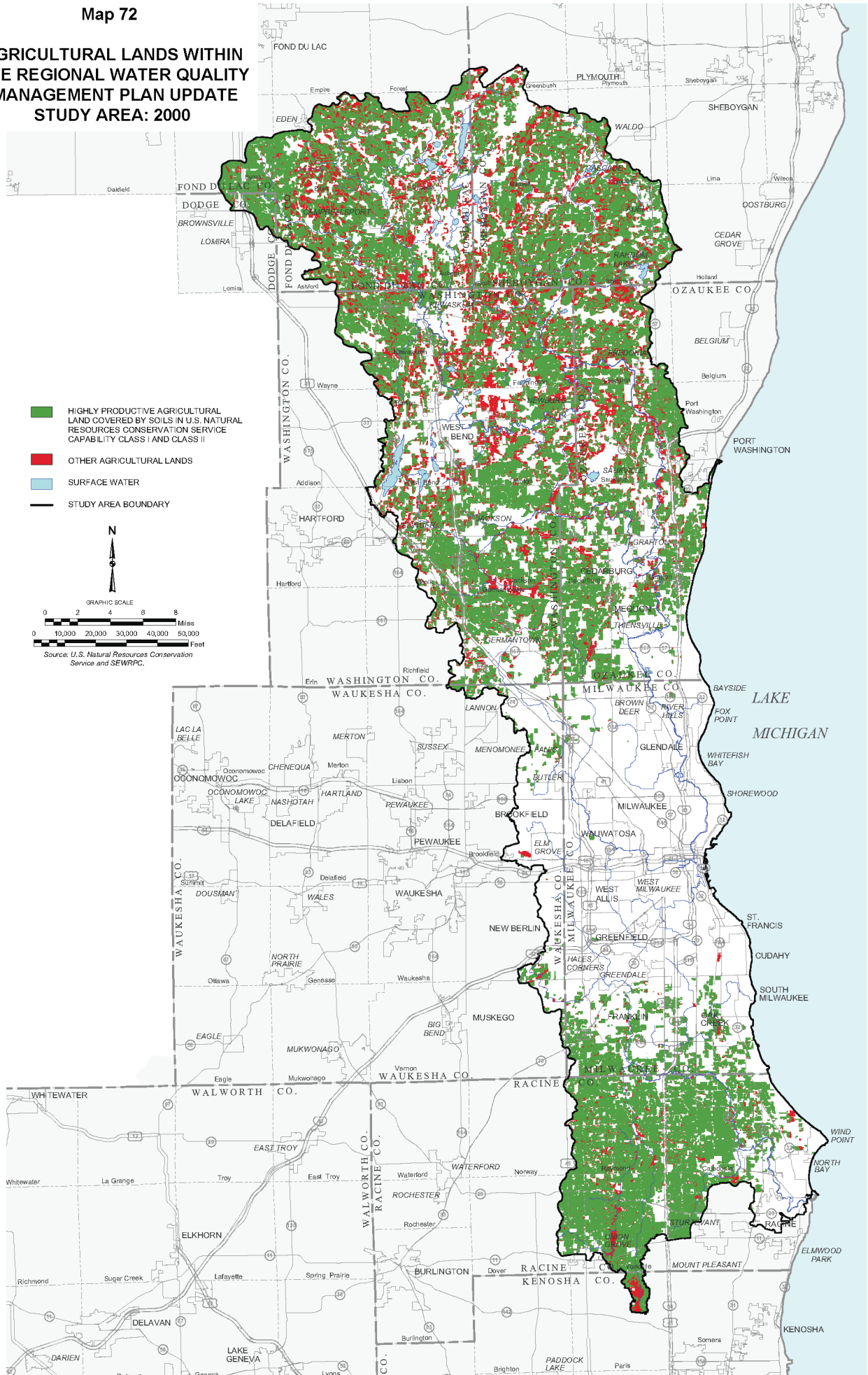


PROTECTION OF PRIMARY ENVIRONMENTAL CORRIDORS IN THE PORTION OF THE SOUTHEASTERN WISCONSIN REGION WITHIN THE REGIONAL WATER QUALITY MANAGEMENT PLAN UPDATE STUDY AREA

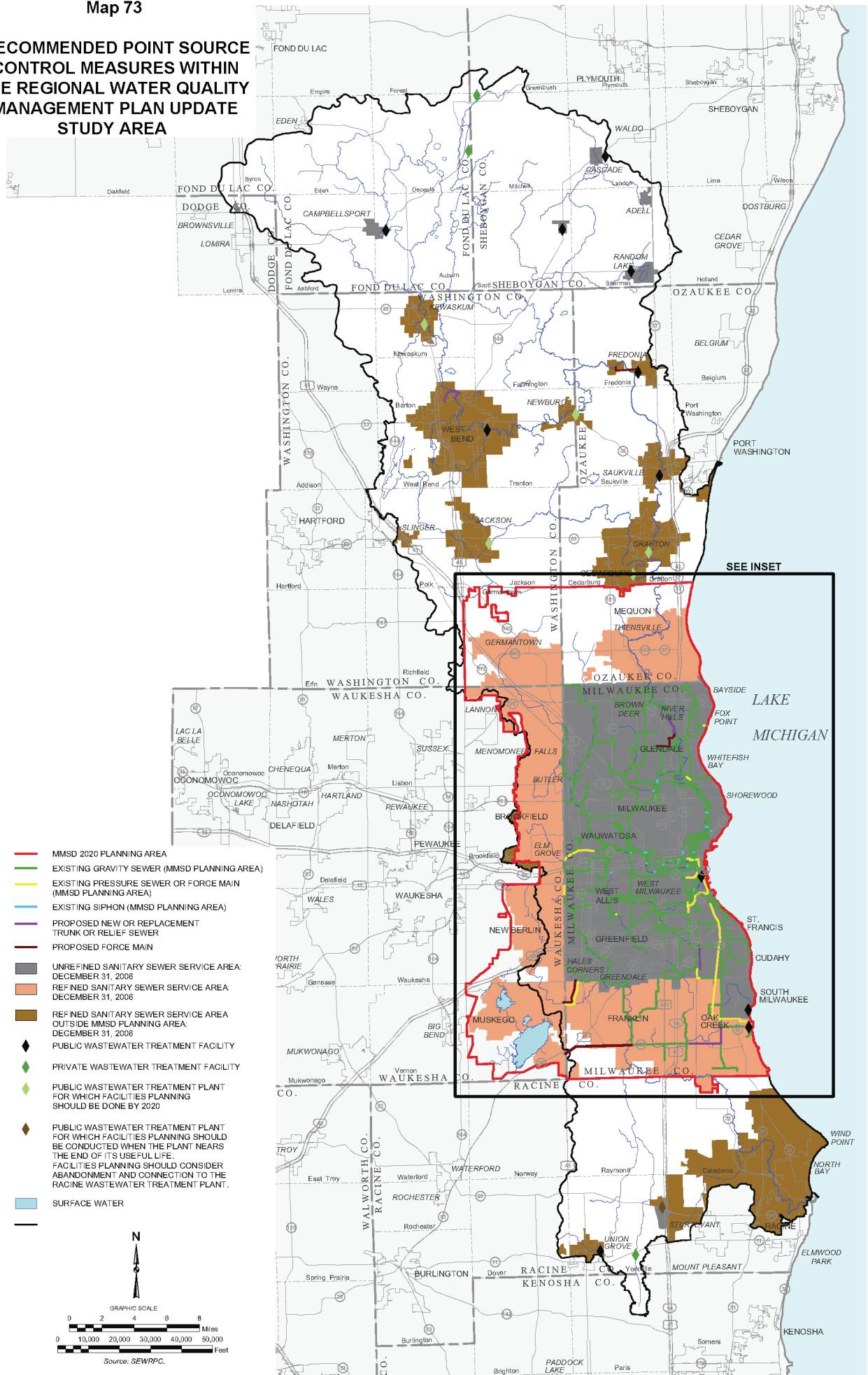


Map 72

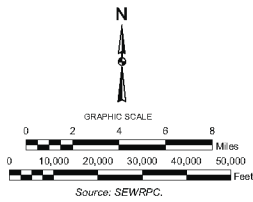
**AGRICULTURAL LANDS WITHIN
THE REGIONAL WATER QUALITY
MANAGEMENT PLAN UPDATE
STUDY AREA: 2000**



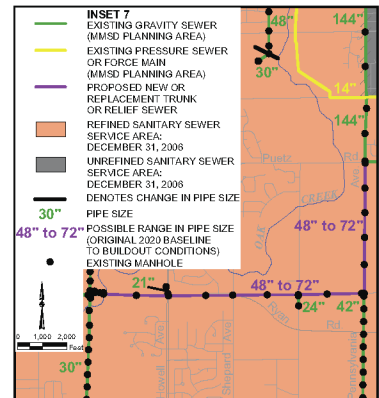
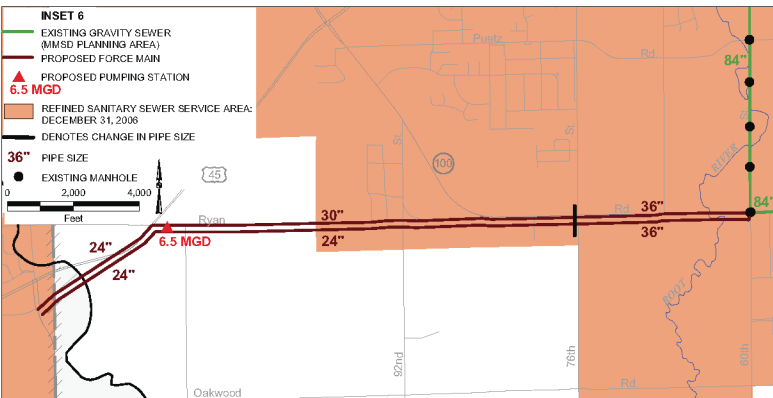
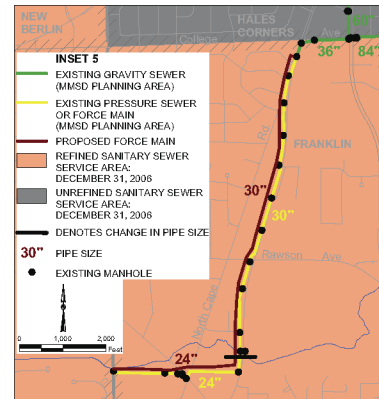
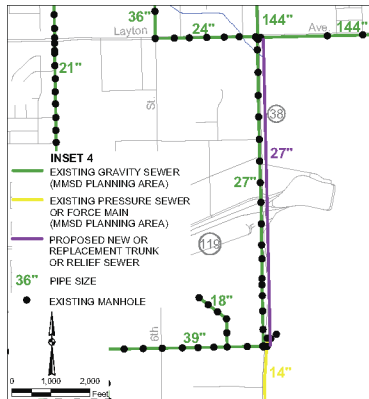
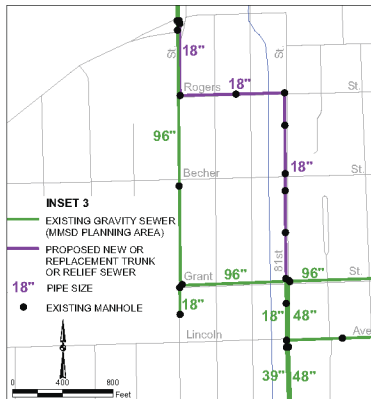
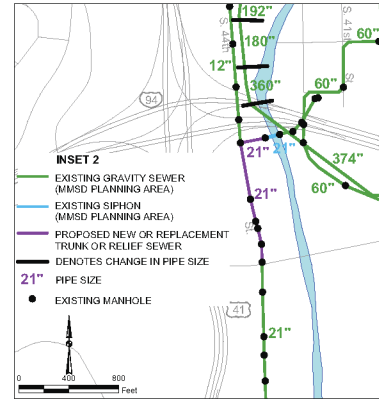
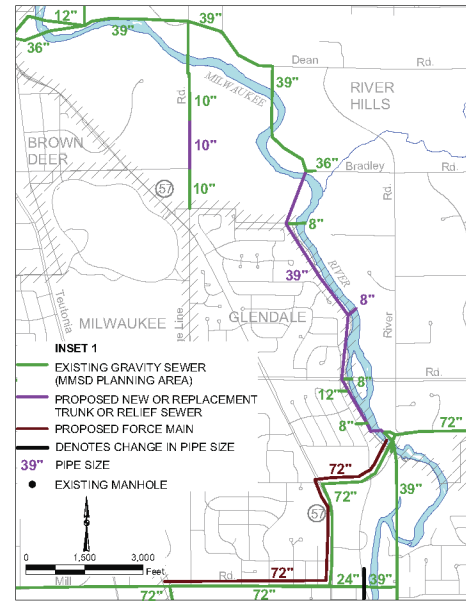
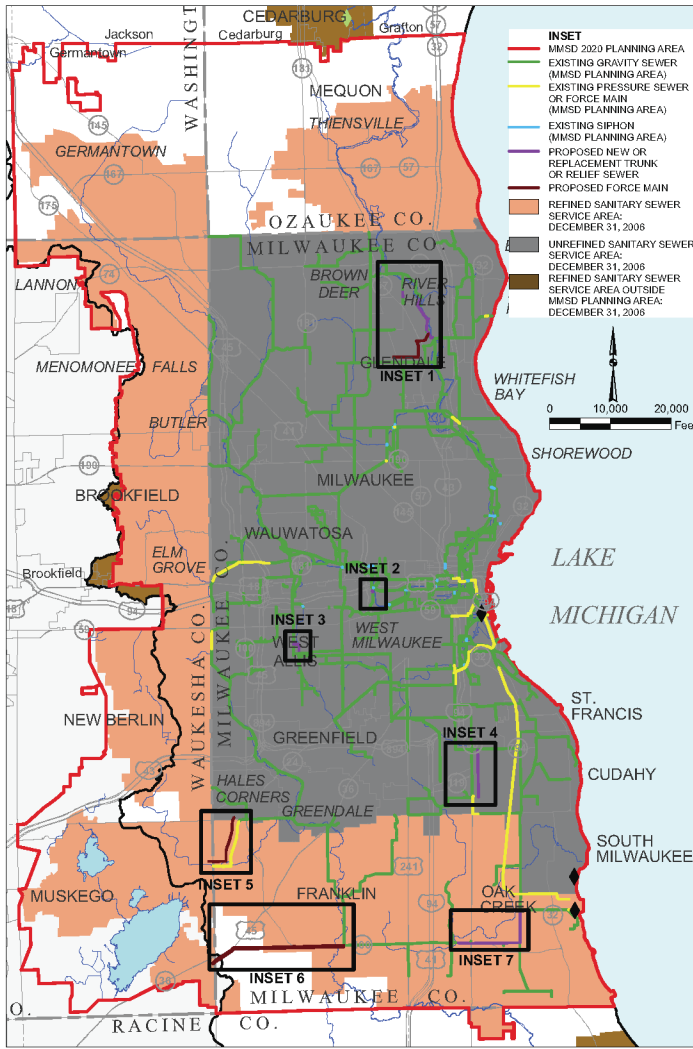
RECOMMENDED POINT SOURCE CONTROL MEASURES WITHIN THE REGIONAL WATER QUALITY MANAGEMENT PLAN UPDATE STUDY AREA



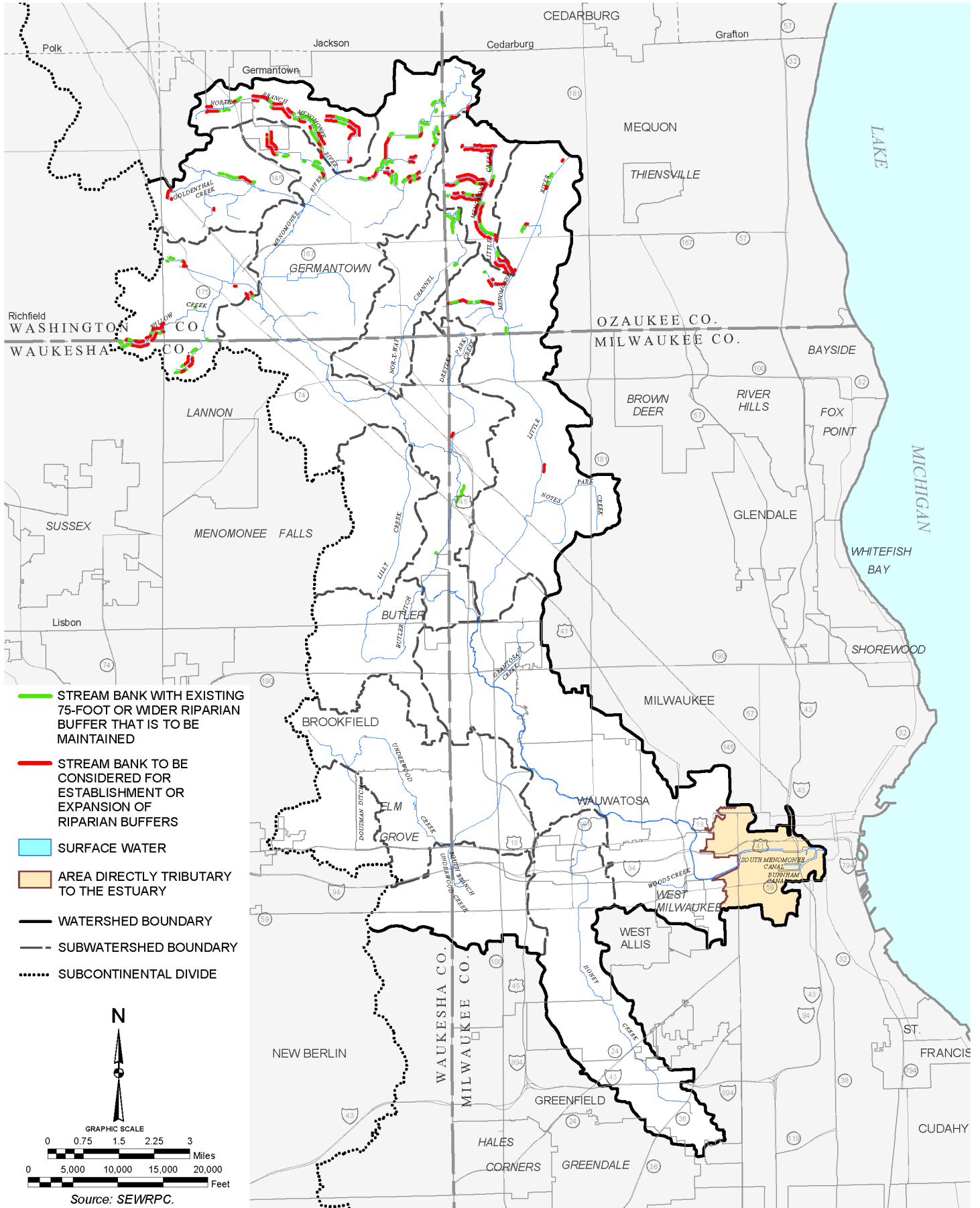
- MMSD 2020 PLANNING AREA
- EXISTING GRAVITY SEWER (MMSD PLANNING AREA)
- EXISTING PRESSURE SEWER OR FORCE MAIN (MMSD PLANNING AREA)
- EXISTING SIPHON (MMSD PLANNING AREA)
- PROPOSED NEW OR REPLACEMENT TRUNK OR RELIEF SEWER
- PROPOSED FORCE MAIN
- UNREFINED SANITARY SEWER SERVICE AREA: DECEMBER 31, 2006
- REFINED SANITARY SEWER SERVICE AREA: DECEMBER 31, 2006
- REFINED SANITARY SEWER SERVICE AREA OUTSIDE MMSD PLANNING AREA: DECEMBER 31, 2006
- ◆ PUBLIC WASTEWATER TREATMENT FACILITY
- ◆ PRIVATE WASTEWATER TREATMENT FACILITY
- ◆ PUBLIC WASTEWATER TREATMENT PLANT FOR WHICH FACILITIES PLANNING SHOULD BE DONE BY 2020
- ◆ PUBLIC WASTEWATER TREATMENT PLANT FOR WHICH FACILITIES PLANNING SHOULD BE CONDUCTED WHEN THE PLANT NEARS THE END OF ITS USEFUL LIFE. FACILITIES PLANNING SHOULD CONSIDER ABANDONMENT AND CONNECTION TO THE RACINE WASTEWATER TREATMENT PLANT.
- SURFACE WATER



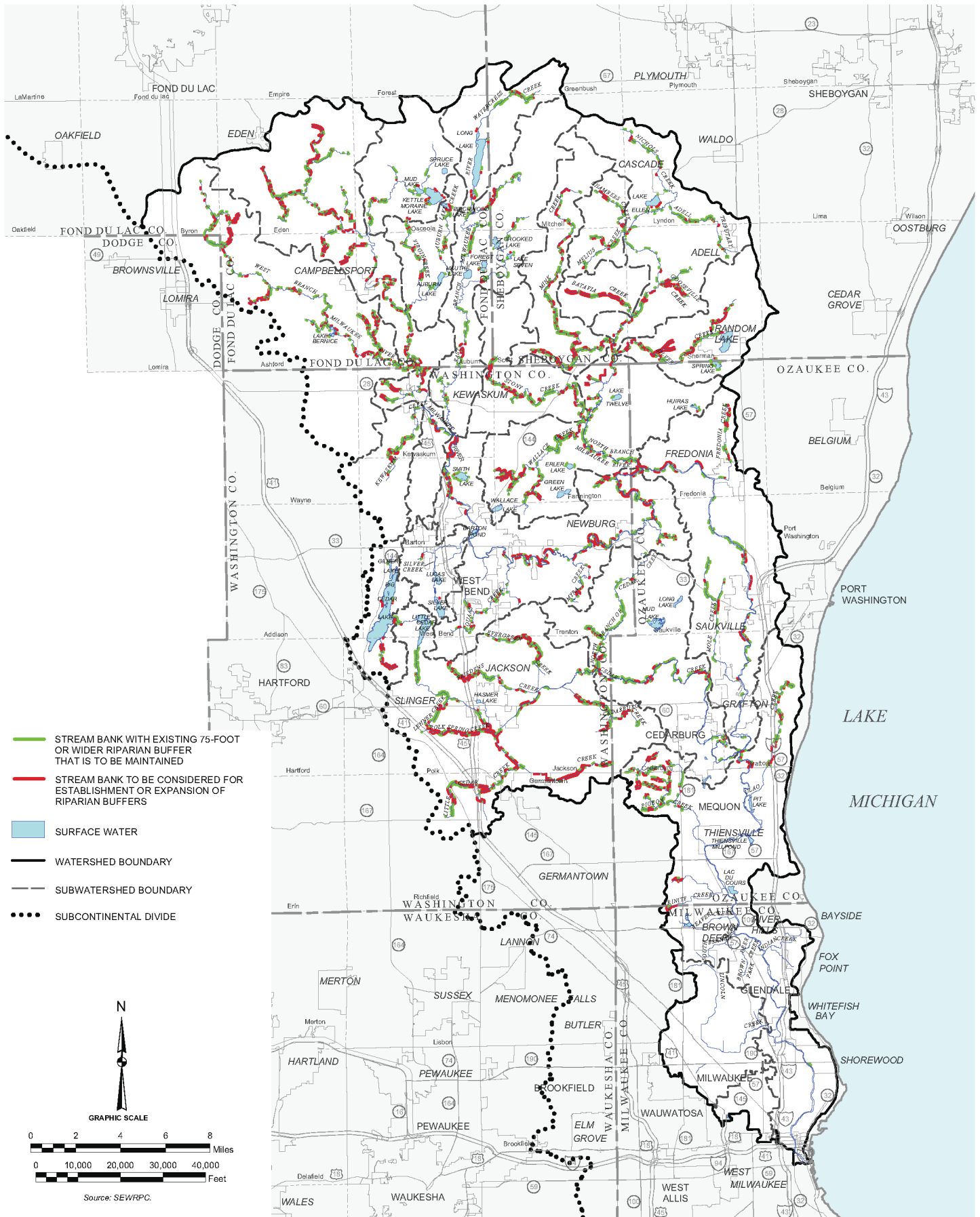
Map 73 (continued)



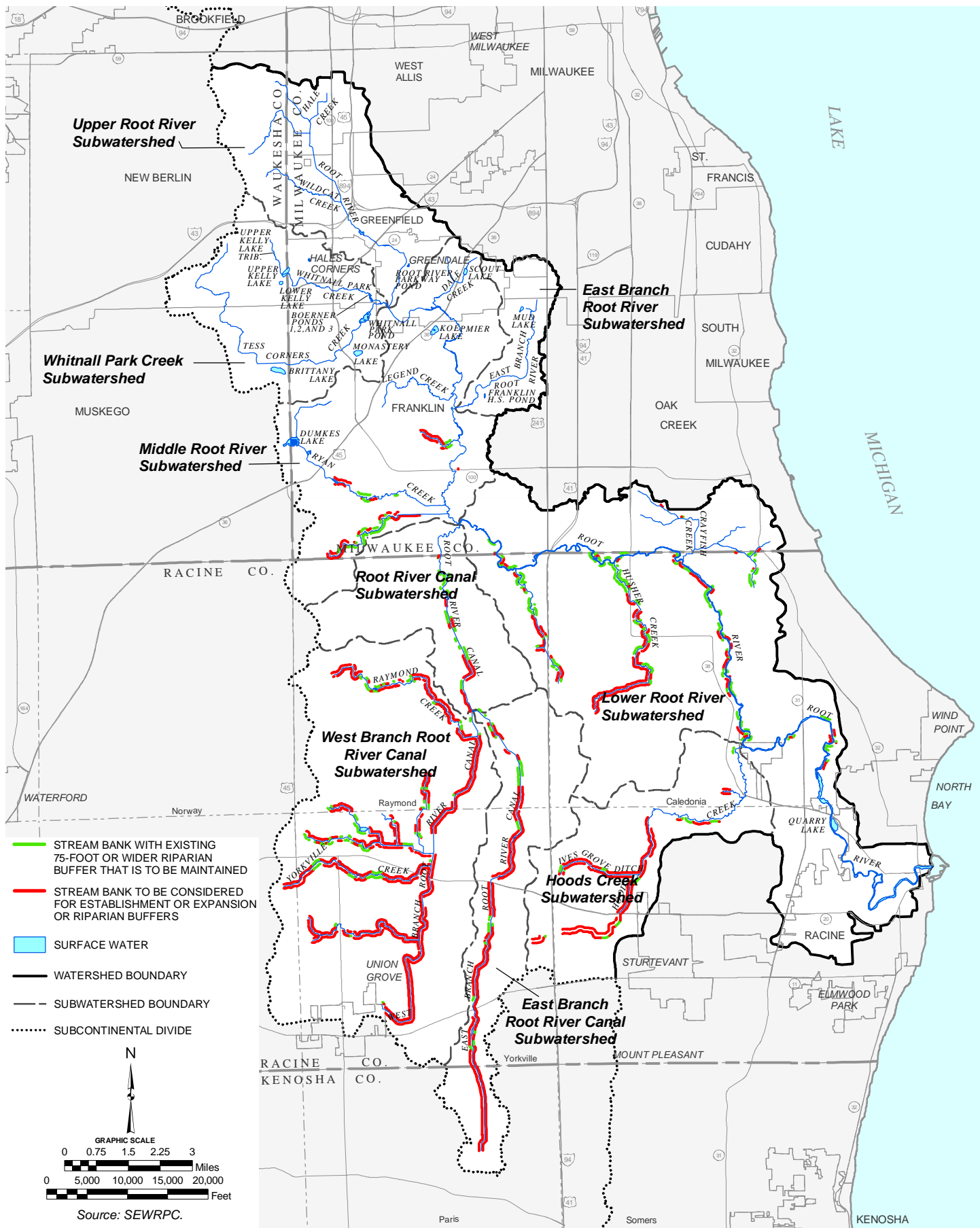
MENOMONEE RIVER WATERSHED: STREAM REACHES FOR WHICH ESTABLISHMENT OR EXPANSION OF RIPARIAN BUFFERS ARE TO BE CONSIDERED



MILWAUKEE RIVER WATERSHED: STREAM REACHES FOR WHICH ESTABLISHMENT OR EXPANSION OF RIPARIAN BUFFERS ARE TO BE CONSIDERED

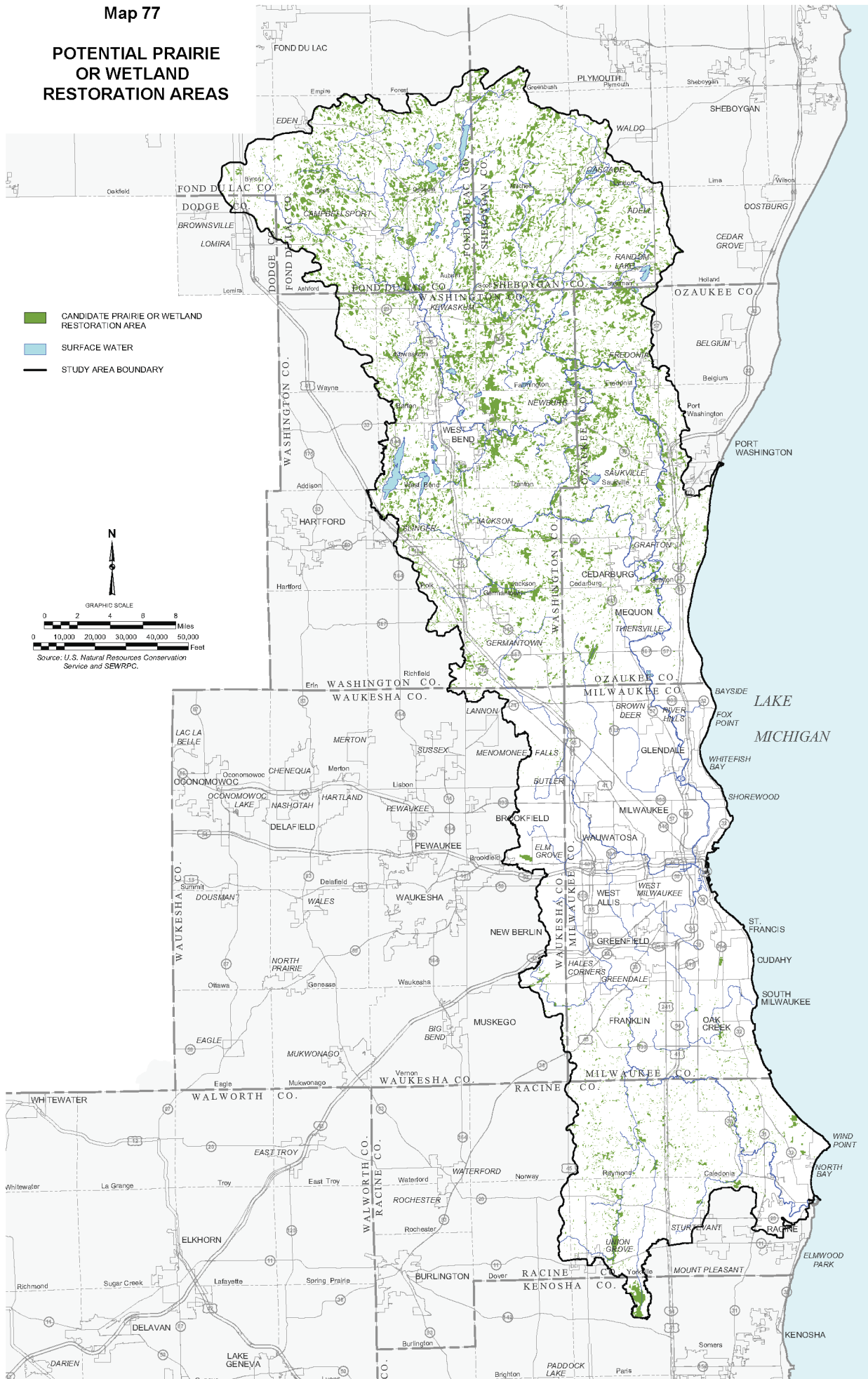


ROOT RIVER WATERSHED: STREAM REACHES FOR WHICH ESTABLISHMENT OR EXPANSION OF RIPARIAN BUFFERS ARE TO BE CONSIDERED





Map 77

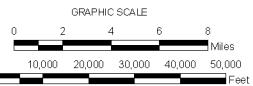
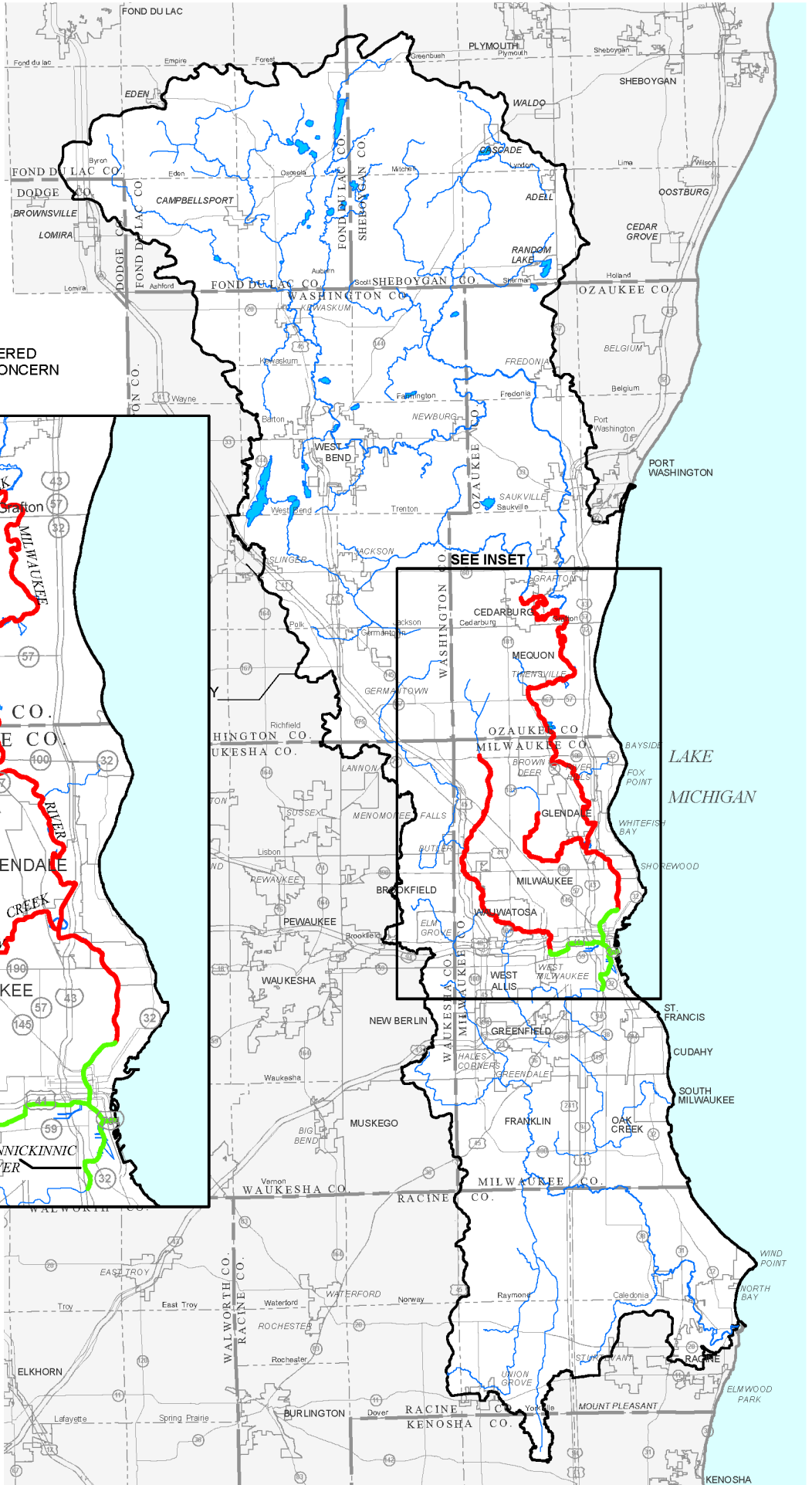
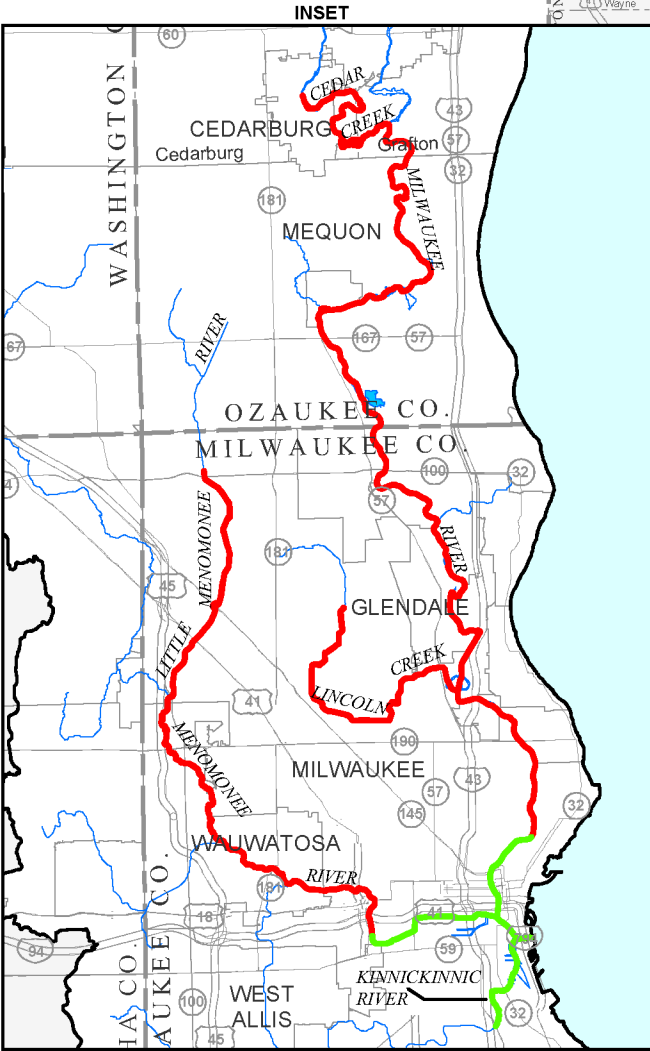
POTENTIAL PRAIRIE OR WETLAND RESTORATION AREAS



Map 78

**STREAM REACHES
PROPOSED TO BE ADDED
TO THE MILWAUKEE ESTUARY
AREA OF CONCERN**

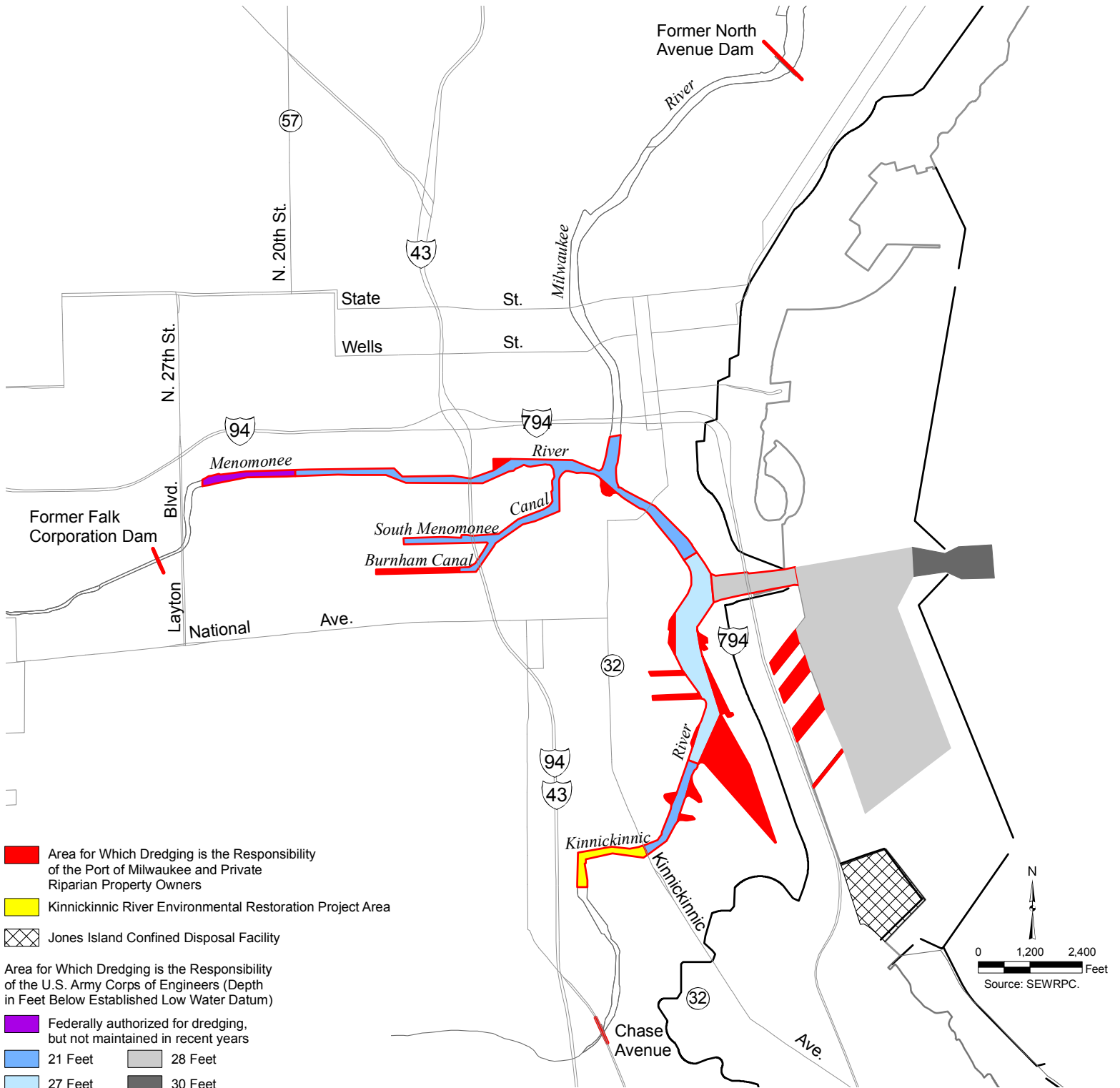
-  STREAM REACHES WITHIN EXISTING AREA OF CONCERN
-  STREAM REACHES TO BE CONSIDERED FOR ADDITION TO THE AREA OF CONCERN



Source: Wisconsin Department of Natural Resources and SEWRPC.

Map 79

**RECOMMENDED DREDGING ELEMENT OF THE
REGIONAL WATER QUALITY MANAGEMENT PLAN UPDATE**

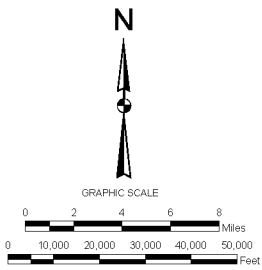
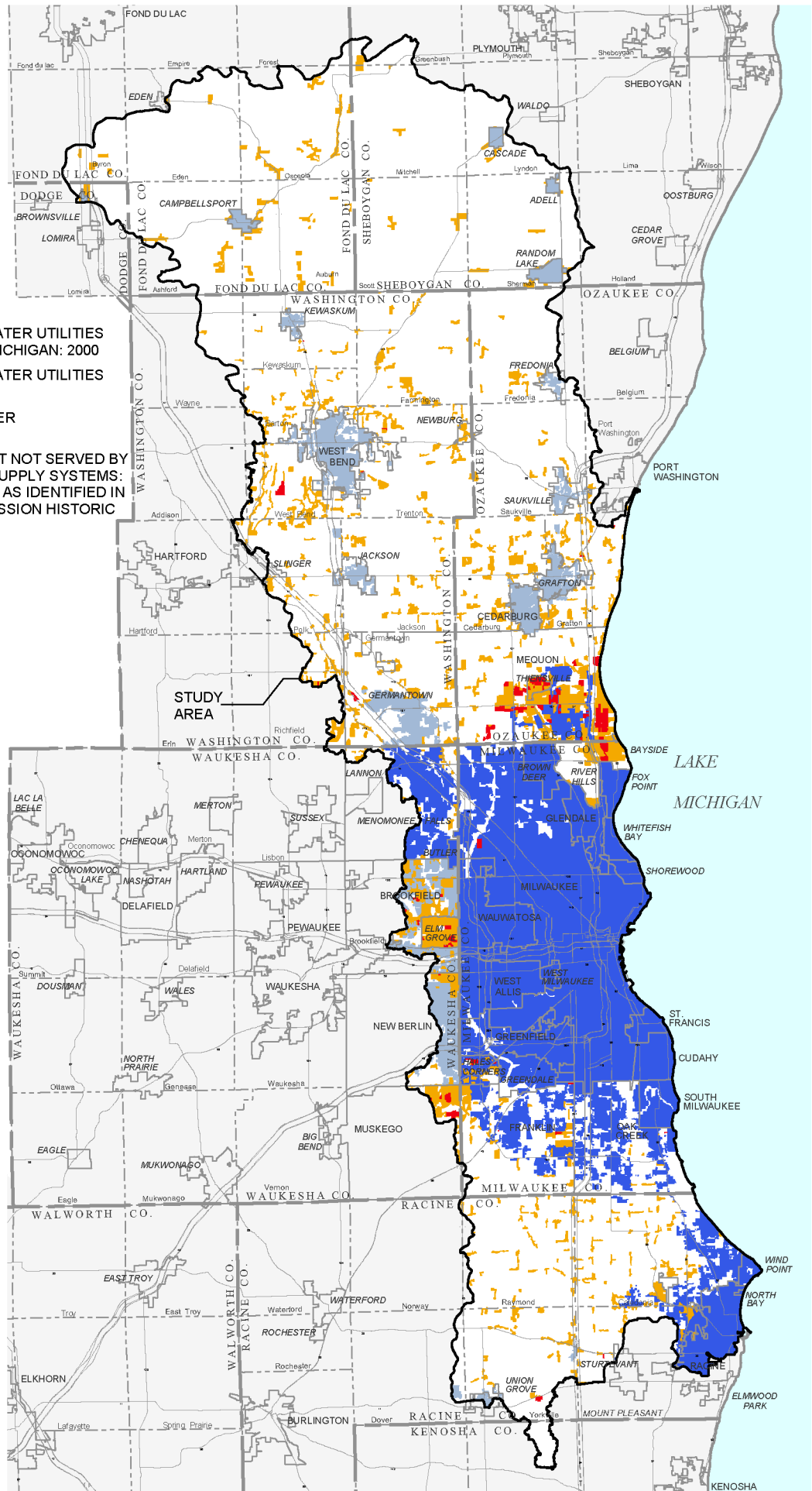


Map 80

AREAS SERVED BY MUNICIPAL AND PRIVATE WATER UTILITIES WITHIN THE REGIONAL WATER QUALITY MANAGEMENT PLAN UPDATE STUDY AREA

- AREAS SERVED BY MUNICIPAL WATER UTILITIES PROVIDING WATER FROM LAKE MICHIGAN: 2000
- AREAS SERVED BY MUNICIPAL WATER UTILITIES PROVIDING GROUNDWATER: 2000
- AREAS SERVED BY PRIVATE WATER UTILITIES: 2000
- EXTENT OF URBAN DEVELOPMENT NOT SERVED BY MUNICIPAL OR PRIVATE WATER SUPPLY SYSTEMS: INCLUDES URBAN DEVELOPMENT AS IDENTIFIED IN THE REGIONAL PLANNING COMMISSION HISTORIC URBAN GROWTH RING ANALYSIS

NOTE: PORTIONS OF THE CITY OF MEQUON SYSTEM WERE CONVERTED TO A MUNICIPAL SYSTEM OVER THE PERIOD 1998 THROUGH 2002.



Source: SEWRPC.