

# E

## APPENDIX E

---

**Waupaca County LWCD Shoreland Presentation**



### Chain of Lakes Shoreline Assessment


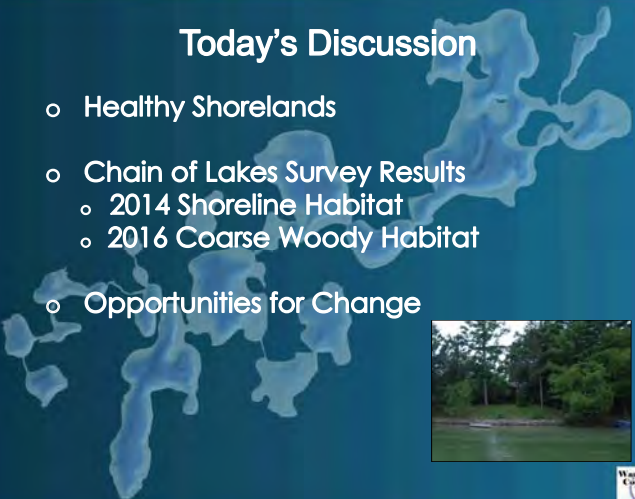


Dan McFarlane  
Conservation Technician  
Waupaca County  
Land & Water Conservation  
715.258.6245



### Today's Discussion

- Healthy Shorelands
- Chain of Lakes Survey Results
  - 2014 Shoreline Habitat
  - 2016 Coarse Woody Habitat
- Opportunities for Change




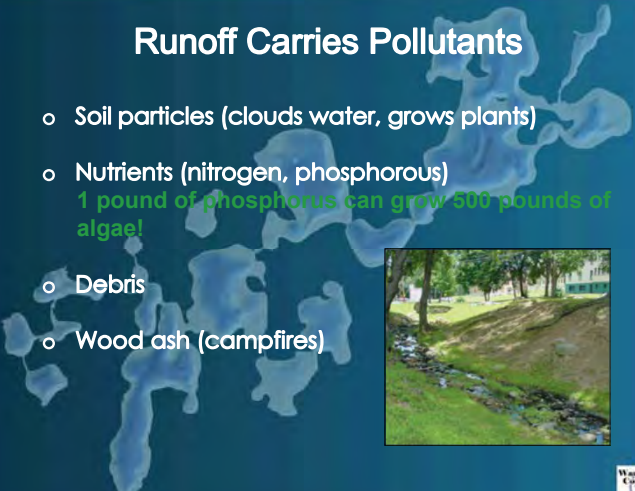
### Why a Healthy Shoreline

- Flooding and erosion control
- Reducing polluted runoff entering the Chain
- Habitat for fish and wildlife
- Privacy and natural beauty



### Runoff Carries Pollutants

- Soil particles (clouds water, grows plants)
- Nutrients (nitrogen, phosphorous)  
1 pound of phosphorus can grow 500 pounds of algae!
- Debris
- Wood ash (campfires)



### What is a Healthy Shoreline?

- A combination of native flowers/grasses/shrubs/trees
- Should extend at least 35 feet inland

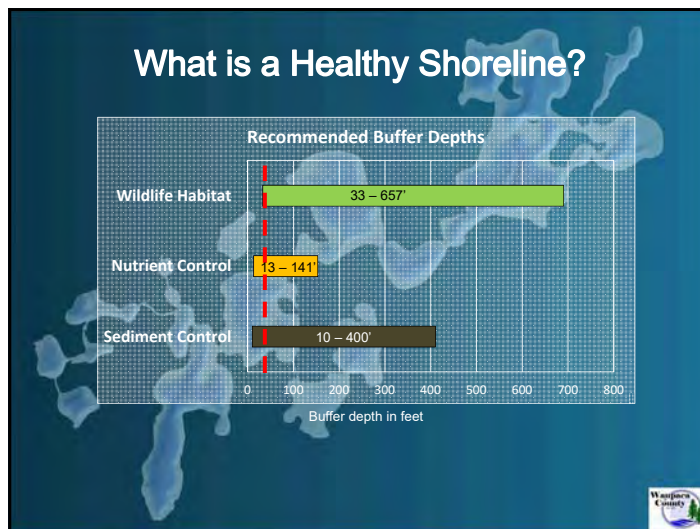
The diagram illustrates the root structures of four native plant species: Kentucky bluegrass, switchgrass, prairie cordgrass, and cylindrical blazing star. The photo shows a white egret standing in a pond with lily pads, surrounded by dense green vegetation.

### Natural vs. Lawn

- Natural Buffer
- Wildlife Corridor
- Overhanging Vegetation
- Aquatic Habitat

- No Buffer
- No Corridor
- No Overhanging Vegetation
- Little Aquatic Habitat

80% of the plants and animals on the Endangered Species List live all or part of their life near shore

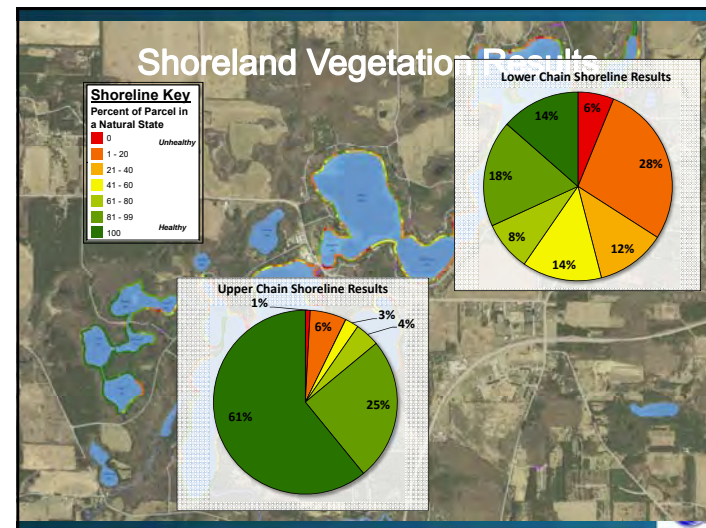
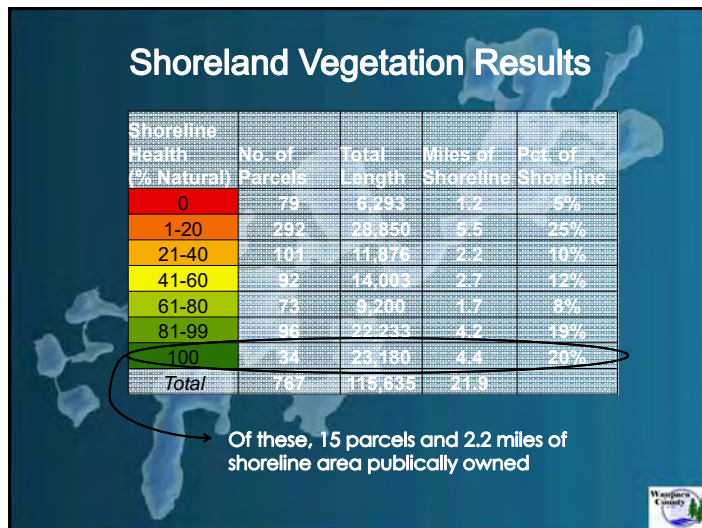
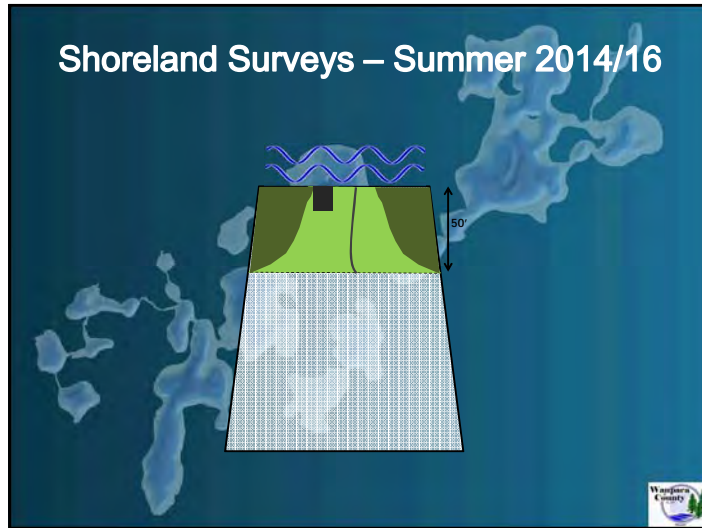


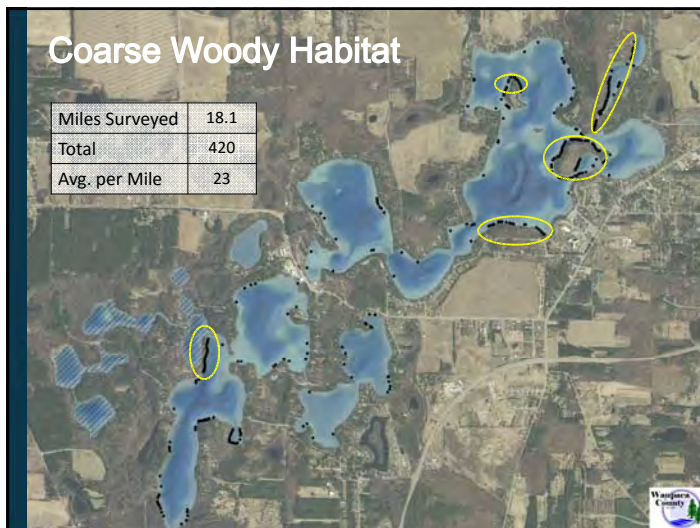
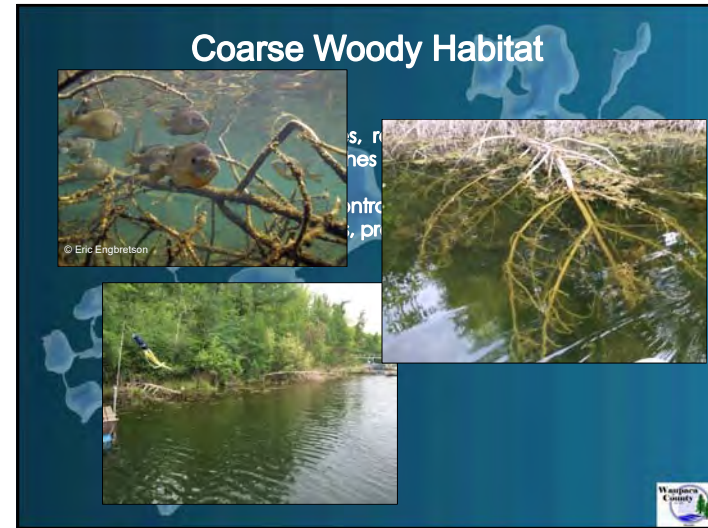
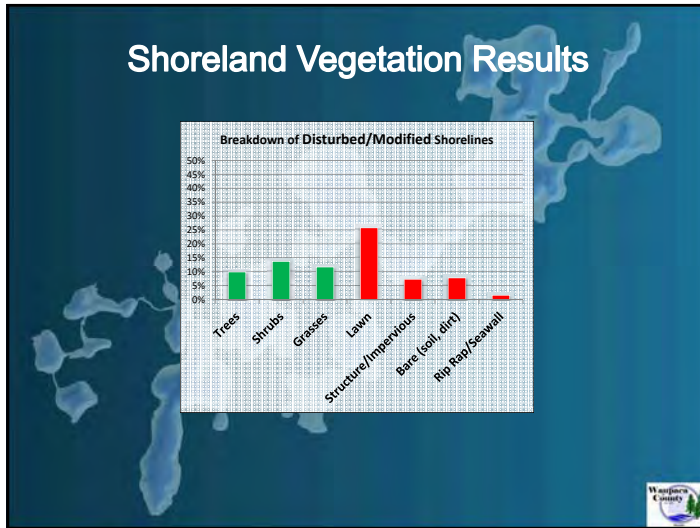
### Shoreland Surveys – Summer 2014/16

- Conducted by boat - Parcel based
- Natural Vegetation - Trees/Shrubs/Grasses
- Human Disturbances - Mowed lawn - Structures - Impervious surfaces - Rip Rap - Erosion
- Coarse Woody Habitat

The photo shows a person in a boat conducting a survey on a lake. The survey form includes sections for 'General Information', 'Vegetation', 'Human Disturbances', and 'Coarse Woody Habitat'.









### Improving Shorelands: What you can do

- Stop mowing!
- Restore native vegetation along the shoreline
- Get the word out – inform local landowners about the benefits of healthy shorelands
  - Community campaigns
  - Signed demonstration sites on public property
  - Offer guidance through backyard walks with professionals that can assist landowners
  - Incentive programs
    - Healthy Lakes Initiative



### Thank You! Questions?

