



February 10, 2022

Mr. Timothy R. Asplund
Monitoring Section Chief
WDNR – Bureau of Water Quality
101 S. Webster Street
Madison, WI 53707-7921

RE: Water Quality Management Letter for Sewer Service Area Amendment Request #2108 – Central USA (City of Fitchburg)

Dear Mr. Asplund:

The City of Fitchburg has submitted a request for a sewer service area amendment to the *Dane County Water Quality Plan*. The proposed amendment is currently in the City of Fitchburg, in the Story Creek (HUC 12: 070900040501) watershed. It includes the addition of approximately 42.3 acres of land, including approximately 1.1 acres of existing road right-of-way, and 17 acres of proposed environmental corridors for a net of approximately 24.2 developable acres to the Central Urban Service Area. A public hearing was held on the proposed amendment at the January 13, 2022, Regional Planning Commission meeting. The City's application and the Commission staff's analysis report of the proposed amendment have been submitted to the Department's Surface Water Integrated Monitoring System.

It is the Capital Area Regional Planning Commission staff's opinion that the proposed amendment is consistent with water quality standards under Wis. Stat. § 281.15, and the adopted Policies and Criteria for the Review of Sewer Service Area Amendments to the *Dane County Water Quality Plan*, by meeting state and local requirements and agreements identified below. Additional actions have also been recommended below to further improve water quality and environmental resource management.

At our February 10, 2022, meeting, the Capital Area Regional Planning Commission voted to recommend approval of this amendment to the Wisconsin Department of Natural Resources, based on the land uses and services proposed, and in recognition of the state and local requirements for the following:

1. State and local review and approval of stormwater management plan(s) is required, including Regional Planning Commission staff review and approval as part of the sewer extension review process.
 - a. Stormwater and erosion control practices are required to be installed prior to other land disturbing activities. Infiltration practices are required to be protected from compaction and sedimentation during land disturbing activities.

- b. Peak rates of runoff are required to be controlled for the 1-, 2-, 10-, 100-, and 200-year 24-hour design storms to “pre-development” levels, in accordance with the City of Fitchburg and Dane County Stormwater Ordinances.
 - c. Sediment control is required that achieves at least 80% sediment control for the amendment area based on the average annual rainfall, with a minimum of 60% of that control occurring prior to infiltration, in accordance with the City of Fitchburg and Dane County Stormwater Ordinances.
 - d. Runoff volume control is required that maintains the post development stay-on volume to at least 90% of the pre-development stay-on volume for the average annual rainfall period, without exemptions, in accordance with the Dane County Stormwater Ordinance. Furthermore, City of Fitchburg ordinance requires post-development infiltration (stay-on) volume as close to 100% as practicable of the average annual pre-development infiltration (stay-on) volume, for the amendment area since it is within a closed basin.
 - e. Adequate storage is required within the closed basin watershed area for the runoff volume from back-to-back, 100-year 24-hour design storms, in accordance with the Dane County Stormwater Ordinance.
 - f. Development of an emergency drawdown or pumping plan is required, in accordance with the Dane County Stormwater Ordinance.
 - g. Oil and grease control are required that treats the first one-half inch of runoff using best management practices at commercial and industrial sites, in accordance with the City of Fitchburg and Dane County Stormwater Ordinances.
 - h. Maintaining pre-development groundwater recharge rates from the Wisconsin Geological and Natural History Survey’s 2012 report, *Groundwater Recharge in Dane County, Wisconsin, Estimated by a GIS-Based Water-Balance Model* (a range of 10 to 11 inches/year for the amendment area or by a site specific analysis), when required by the City of Fitchburg and Dane County Stormwater Ordinances.
2. Easements and perpetual legal maintenance agreements with the City, to allow the City to maintain stormwater management facilities if owners fail to do so, are required for any facilities located on private property.
 3. Environmental corridors are required to be delineated to include the restored wetland, required buffers, and stormwater management areas to meet the Environmental Corridor Policies and Criteria adopted in the *Dane County Water Quality Plan*.

Mr. Timothy R. Asplund

February 10, 2022

Page 3

In addition to the existing state and local requirements, the City of Fitchburg and the development team have agreed to pursue the following water resource management measures for the amendment area:

1. Develop and implement a wetland restoration plan for the wetland within the amendment area, including the use of native vegetation in the wetland buffer areas where appropriate.
2. Continue to foster the responsible use of chlorides by encouraging Edgewood College to become Salt Wise certified or use winter maintenance companies who have attended the winter salt certification classes offered by Wisconsin Salt Wise.

It is also recommended that the City of Fitchburg pursue the following to further improve water quality and environmental resource management:

1. Request a formal Endangered Resources Review by the WDNR or one of their certified reviewers for potential impacts to endangered resources like rare plants, animals and natural communities and take necessary habitat protection measures if species are found.
2. Encourage the use of native flora favored by the Rusty Patched Bumble Bee in landscaping to provide suitable habitat for this pollinator, where appropriate.

If you have any questions regarding this matter, please do not hesitate to contact Mike Rupiper, the Commission's Deputy Agency Director.

Sincerely,

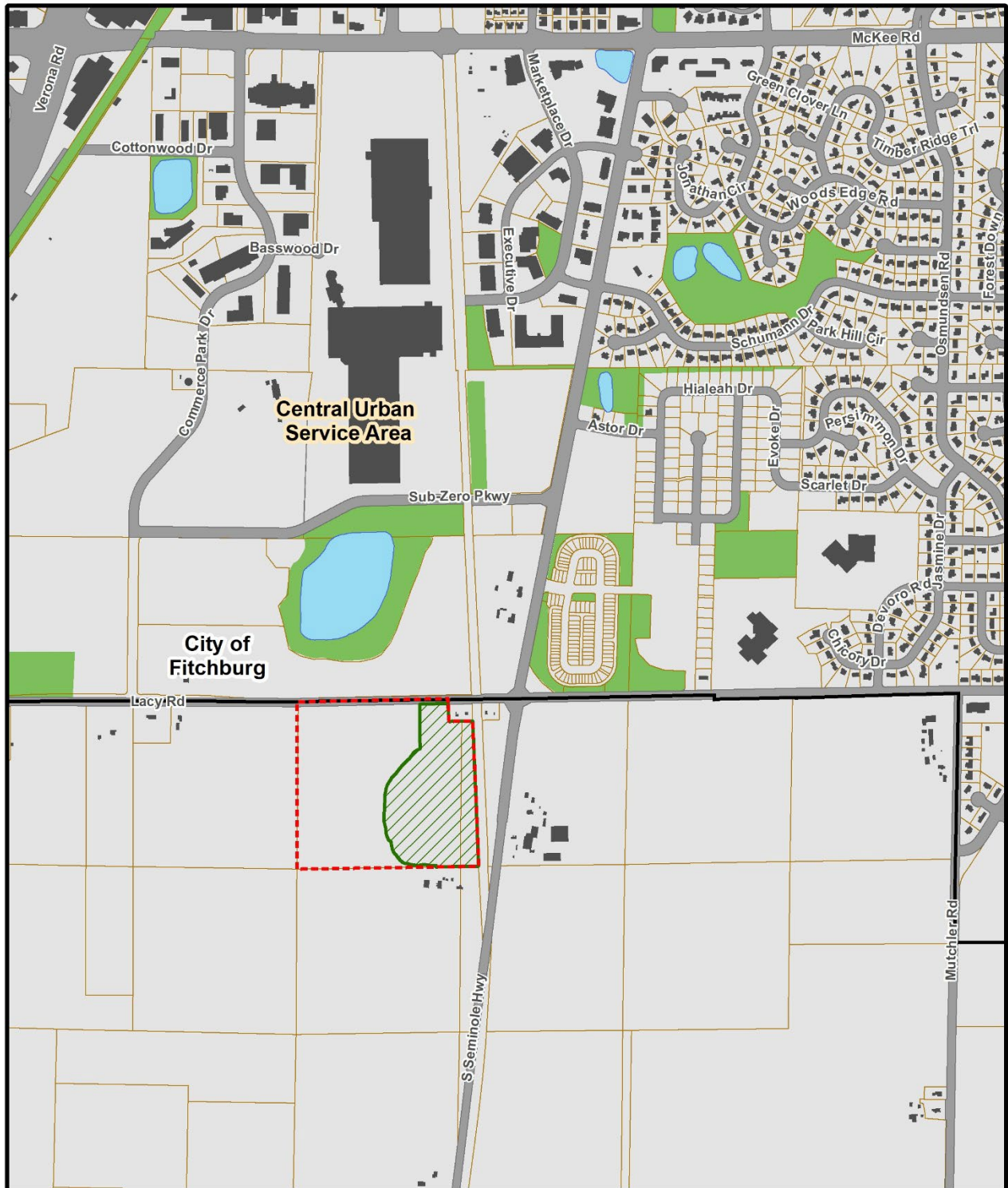


David Pfeiffer
Chairperson



Kris Hampton
Secretary

cc: Mr. Wade Thompson, Community Development Planner, City of Fitchburg



Map 1 Amendment Area	Existing Service Area	Date: 12/13/2021
Proposed Amendment to the Dane County Water Quality Plan, Revising the Sewer Service Area Boundary and Environmental Corridors in Central Urban Service Area	Service Area To Be Added (42.3 acres)	
	Existing Environmental Corridors	
	Environmental Corridor To Be Added (17 acres)	