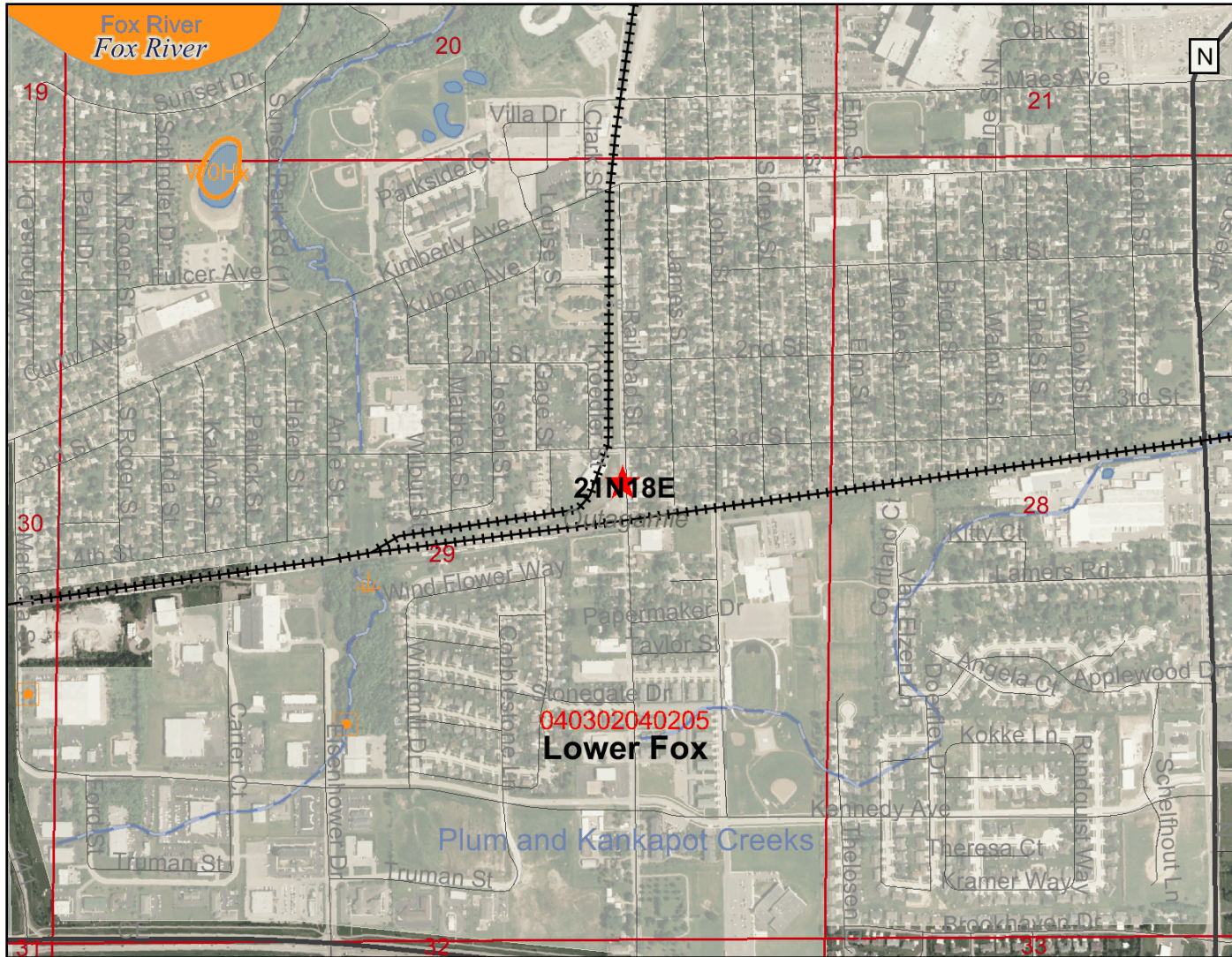


Kimberly_Vil_STWMP_Utility_Jul 22, 2009



Legend

- Railroads
- Major Highways
- Interstate
- State Highway
- U.S. Highways
- County Roads
- Local Roads
- NR104 Lines
- Outstanding and Exceptional Streams
- Exceptional
- Outstanding
- Localational QA In Progress
- Localational Data Source Conflict
- Outstanding and Exceptional Lakes
- Exceptional
- Outstanding
- Localational QA In Progress
- Localational Data Source Conflict
- PRF Other River Public Rights Features
- PRF Sensitive Rivers
- PRF Other Public Rights Features
- PRF Sensitive Areas of Lakes
- ASNRI Outstanding and Exceptional Streams
- ORW
- ORW
- ERW

0 1300 2600 3900 ft.



Scale: 1:13,819

This map is a user generated static output from an Internet mapping site and is for general reference only. Data layers that appear on this map may or may not be accurate, current, or otherwise reliable. THIS MAP IS NOT TO BE USED FOR NAVIGATION.