

6-22-2022

2264 Antler Lake Lane

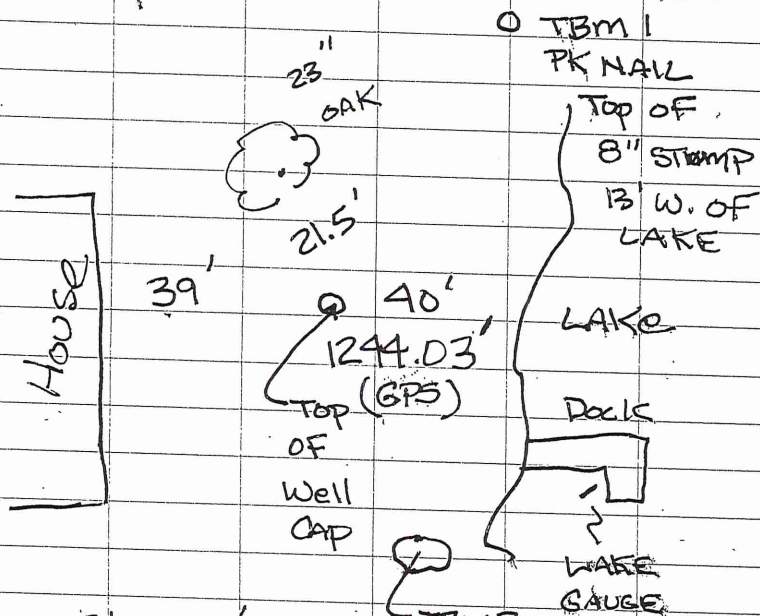
SE6 (Crew)

79

Antler Lake Bm

WELL PIPE CAP 21.5'
above ground level
IN middle of front
yard

1240.38



See Starnet

FILE MAINT NETWORK

Top of
LARGE
Boulder

1242.43

Top of Well CAP

1244.03' NAVD88

19' W. OF LAKE

PT # 2022

7-12-2022 Antler Lake Install
8:30 AM GAUGE 5.07 ✓

STA	BS	FS	ELEV
WELL CAP	0.95	1244.98	1244.03
STUMP		4.60	1240.38
Rock		2.55	1242.43
WATER		10.92	1234.06
GAUGE		8.93	1236.05
	8.63	1244.68	1234.06
WATER		10.62	1234.06
Rock		2.25	1242.43
STUMP		4.30	1240.38
WELL CAP		0.64	1244.04
WATER			1234.06
			TOP OF BOARD

CURVE TABLES

HOW TO USE CURVE TABLES

Table I. contains Tangents and External to a 1° curve. Tan. and Ext. to any other radius may be found nearly enough, by dividing the Tan. or Ext. opposite the given Central Angle by the given degree of curve.

To find Deg. of Curve, having the Central Angle and Tangent: Divide Tan. opposite the given Central Angle by the given Tangent.
To find Deg. of Curve, having the Central Angle and External: Divide Ext. opposite the given Central Angle by the given External.

To find Nat. Tan. and Nat. Ex. Sec. for any angle by Table I.: Tan. or Ext. of twice the given angle divided by the radius of a 1° curve will be the Nat. Tan. or Nat. Ex. Sec.

EXAMPLE

Wanted a Curve with an Ext. of about 12 ft. Angle of Intersection or I. P. = 23° 20' to the R. at Station 542+72.

Ext. in Tab. I opposite 23° 20' = 120.87
120.87 ÷ 12 = 10.07. Say a 10° Curve.

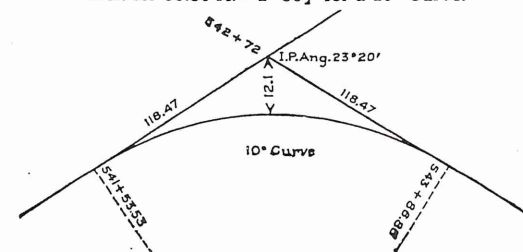
Tan. in Tab. I opp. 23° 20' = 1183.1
1183.1 ÷ 10 = 118.31.

Correction for A. 23° 20' for a 10° Cur. = 0.16
118.31 + 0.16 = 118.47 = corrected Tangent.

(If corrected Ext. is required find in same way)
Ang. 23° 20' = 23.33° ÷ 10 = 2.3333 = L. C.

2° 19½' = def. for sta.	542	I. P. = sta.	542+72
4° 49½' = " " "	+50	Tan. =	1.18.47
7° 19½' = " " "	543	B. C. = sta.	541+53.53
9° 49½' = " " "	+50	L. C. =	2.33.33
11° 40' = " " "	543+	E. C. = Sta.	543+86.86
	86.86		
100 - 53.53 = 46.47 × 3' (def. for 1 ft. of 10° Cur.) = 139.41' =			
2° 19½' = def. for sta.	542		

Def. for 50 ft. = 2° 30' for a 10° Curve.
Def. for 36.86 ft. = 1° 50½' for a 10° Curve.



Calculated Elevation 1: 1228.99

ANTLER Lake

STA	BS	FS	
WELL CAP	0.71	1244.74	1244.03
STUMP		4.36	1240.38
Rock		2.32	1242.42
WATER		11.14	1233.60
GAUGE	8.53	1244.57	8.70 1236.04 TOP OF BOARD
WATER		10.97	1233.60
Rock		2.15	1242.42
STUMP		4.19	1240.38
WELL CAP		0.54	1244.03

GAUGE 4.61

9/29/2022

INSTALL 5.07

8:28 AM

Δ .46

REMOVAL

Δ .46 INSTALL 1237.95

Calculated Elevation 1: 1228.99