

### Park Lake County Park Shoreline Restoration Project Summary

- 1. Rip rap** 160' feet of rip rap was installed in three sections of shoreline near the boat launches. The rip rap was installed according to the plan. The rip rap was then backfilled with native soil to an elevation of 1' above the ordinary highwater mark. This backfilled area was then planted with native plant plugs at a density of 1 plug per sq. ft. An additional 340' of coconut log with sedge plugs was also installed as additional protection on the shoreline that was not rip rapped (not in plan).
- 2. Native plant shoreline restoration/stabilization** A total area of 9585 sq. ft. of native shoreline was installed. The installation of native shoreline was accomplished through the installation of native plugs, native plant mats (not in plan) and a frost seeding done in November of 2019. A total of 10 12-20 trees were also installed. The shrubs weren't installed as they will be installed in the spring of 2020. The shrub stock will be obtained from our annual tree sale in the spring. The rain garden area was also not planted with natives due to wet conditions during the seeding and is planned to be seeded in 2020. No photos of 2019 frost seeding included as seeds will not germinate until the spring of 2020.
- 3. Conservation tour stop** The boat launch site was a location stop for the Columbia County LWCD annual tour. Invitations were sent to our local media outlets, county board members, and agency staff. The tour stop was designed to highlight all of the components that went into restoration of the site. The tour was attended by approximately 20-25 people.

## 2019 Fall Conservation Tour

2019 Columbia County Fall Conservation Tour is Monday, October 7, 2019, departing at 10:30 am from the Columbia County Administration Building. Transportation will depart after the AELWCC Meeting adjourns, returning by 2:00-2:30 p.m., visiting 3 sites, with lunch at the ABS Global facility site conference room at 12:00-12:30 p.m. The tour stops this year will focus on the finished project for a county park boat landing, along with a shoreline past and future project, along with a future dairy expansion project, we will be showcasing many of the conservation improvements that have been made and future plans for more. We will also discuss the challenges faced when working towards the

### PARK LAKE COUNTY PARK—FINISHED



HOSTED BY: COLUMBIA COUNTY  
LAND & WATER CONSERVATION DEPARTMENT

**Site #1 - Mark Witt, N5561 Gema Drive, Pardeeville, WI -**

We will stop by the Witt property and tour the property to view past shoreline stabilization improvements, as well as additional requests for assistance on another area of the shoreline now in jeopardy of shoreline erosion. We will have a short conversation, along with before and after pictures for the past issues and finalized product. We will discuss the process and funding for the future request as well as the previous project.



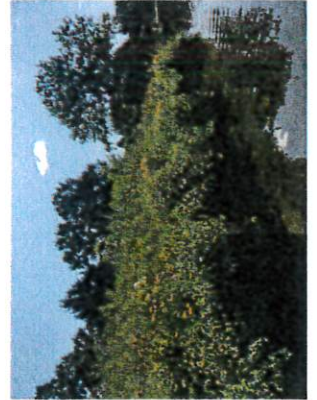
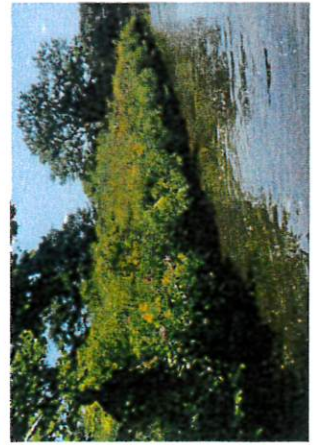
**WITT BEFORE—2012**



**WITT AFTER—2012**



**WITT FUTURE PROJECT**



**Thank you for participating in our 2019 Fall Conservation Tour. A Special thanks to the Mark Witt and ABS Global for allowing us to view the future & completed projects for 2019.**

**BEFORE PICTURES OF PARK LAKE COUNTY  
PARK/BOAT LAUNCH**



**112 East Edgewater Street, Portage, WI 53901  
Phone: 608-742-9670 AND Fax: 608-742-9840  
E-mail: [land.conservation@co.columbia.wi.us](mailto:land.conservation@co.columbia.wi.us)**

**FINISHED PICTURES OF PARK LAKE COUNTY  
PARK/BOAT LAUNCH**



**\*\*We will have a short lunch for attendees at Tour Stop #3.\*\***

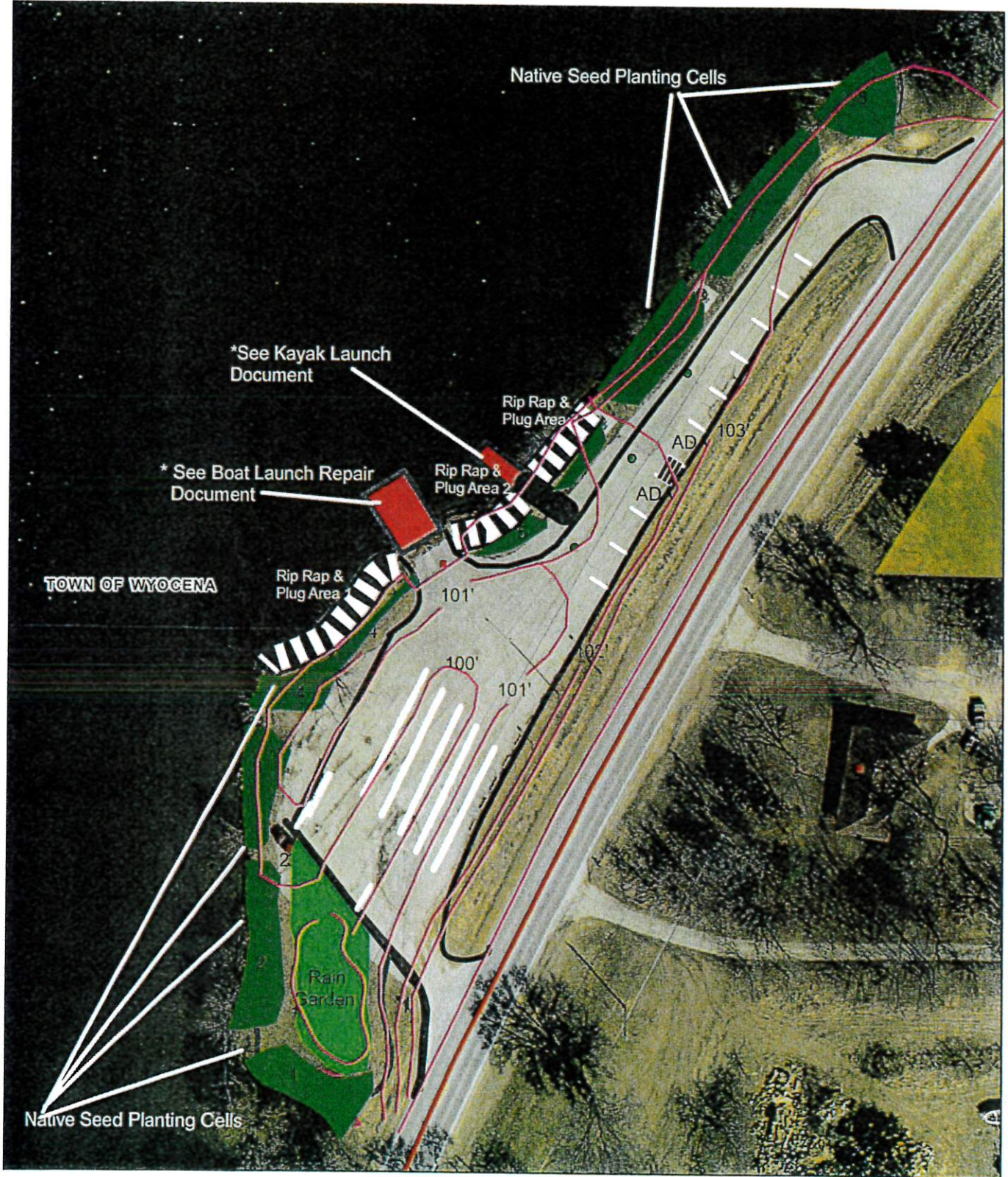
**Tour Stop #3: ABS Global, 3939 Stebbins Road, Poynette, WI**

- This tour we will go through a secure area to view the bulls at the facility and then the building site for the new buildings.

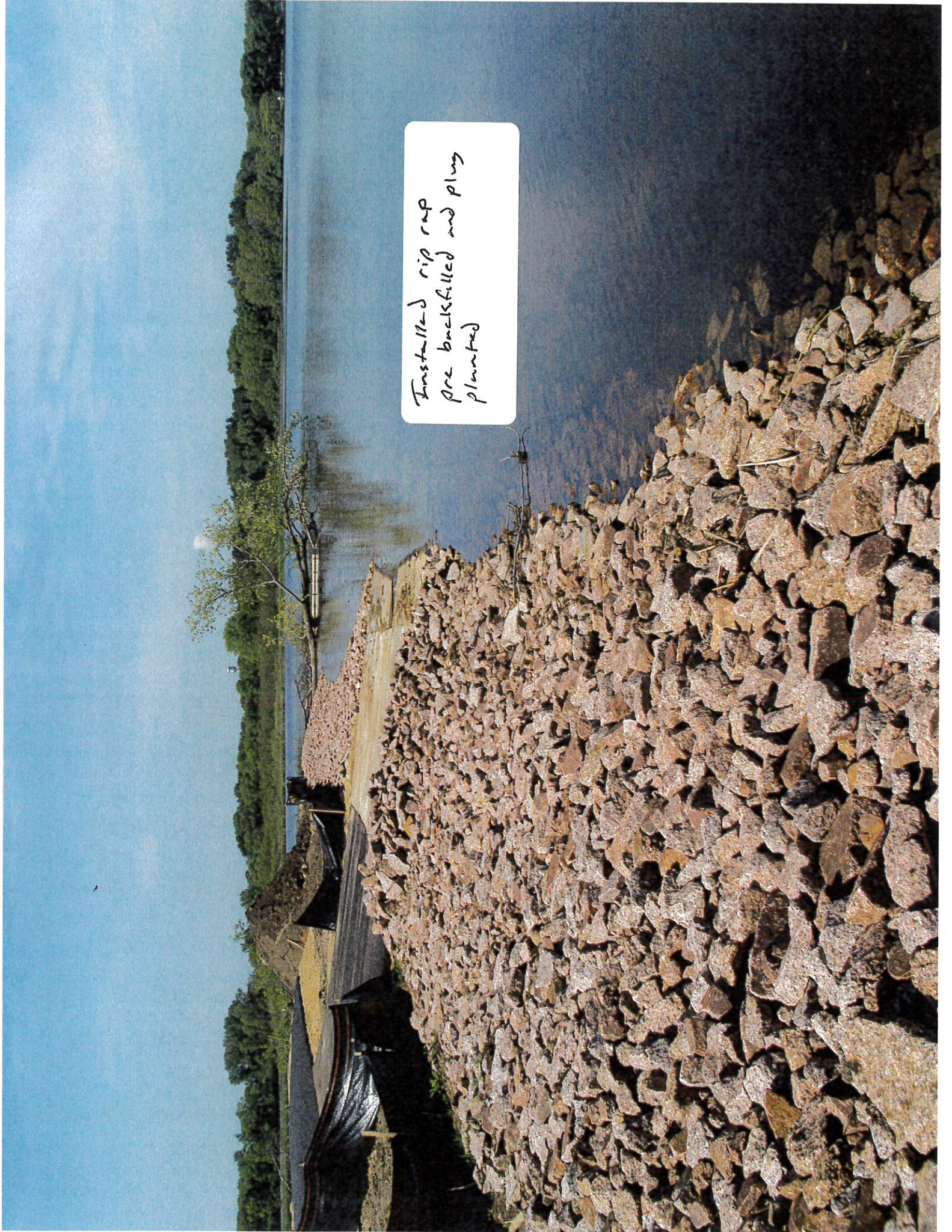
ABS Global Inc  
N3959 Stebins Road  
Poynette, WI



# Park Lake Hwy 44 Boat Launch Proposed Improvements With Contours



Installed rip rap  
pre backfilled and plug  
planted



Installed rip rap pre-bucket filled  
and plugs planted





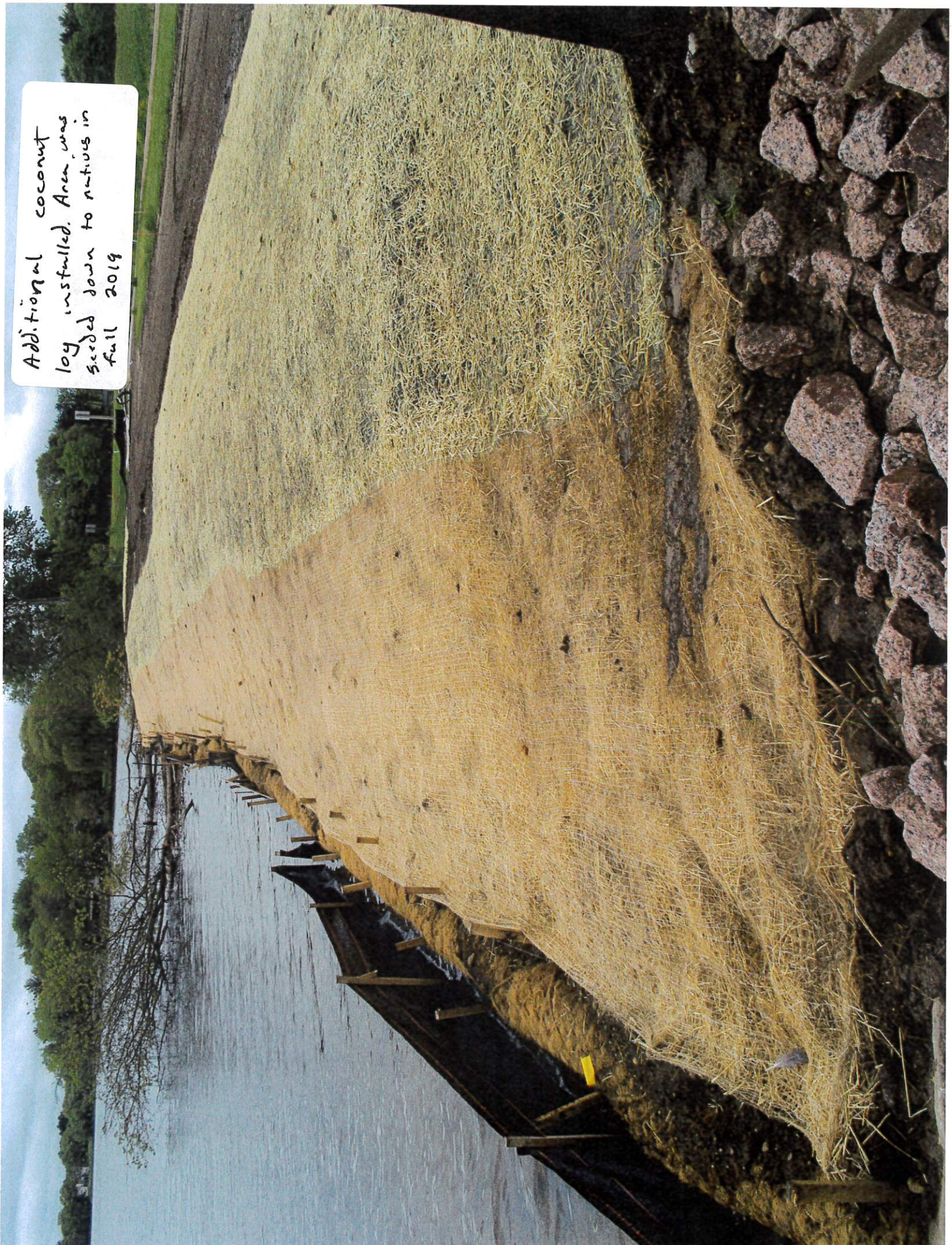
Rip rap bank filled and  
plus planted



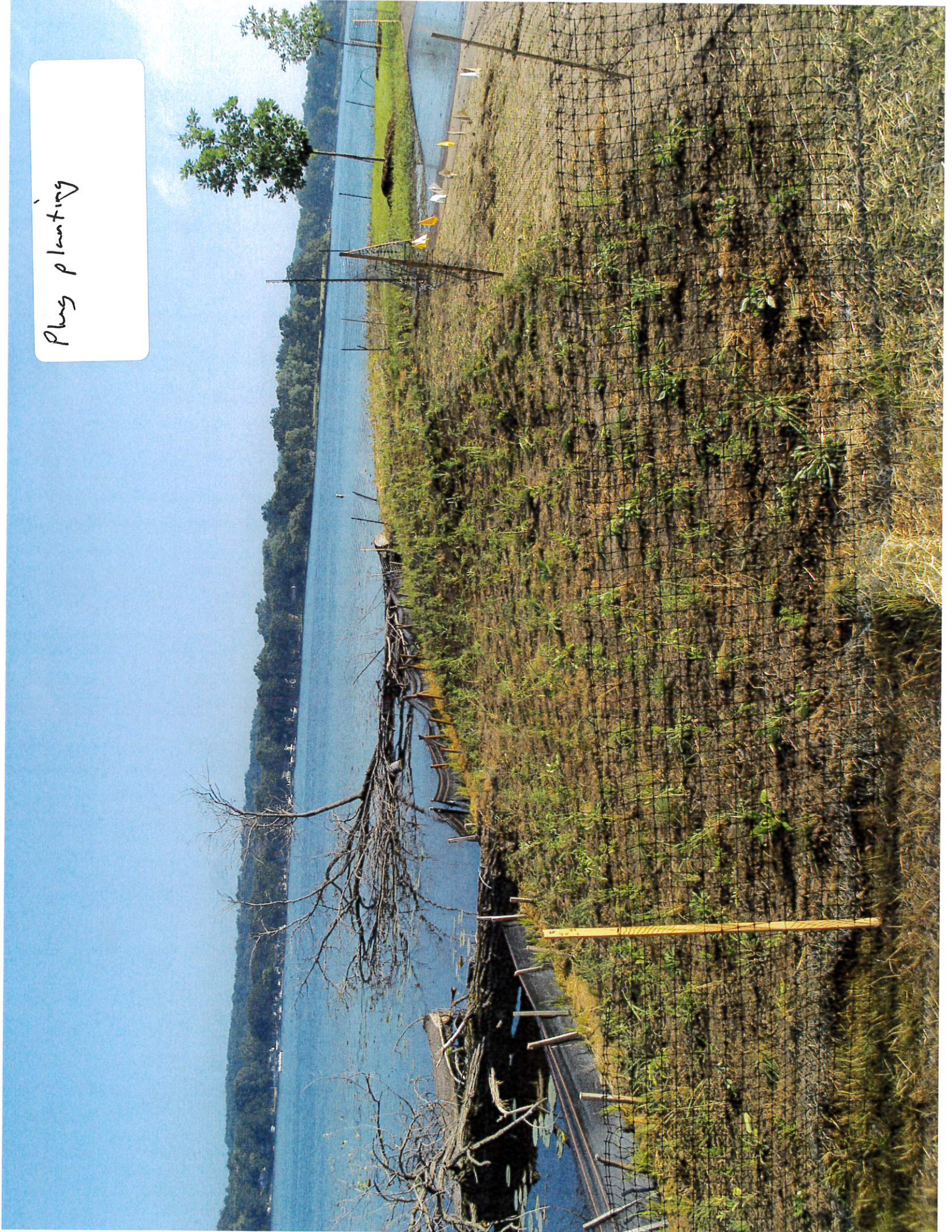
Rip rap backfilled and  
plus planted



Additional coconut  
log installed. Area was  
seeded down to natives in  
fall 2019



Plug planting



Tree plantings







