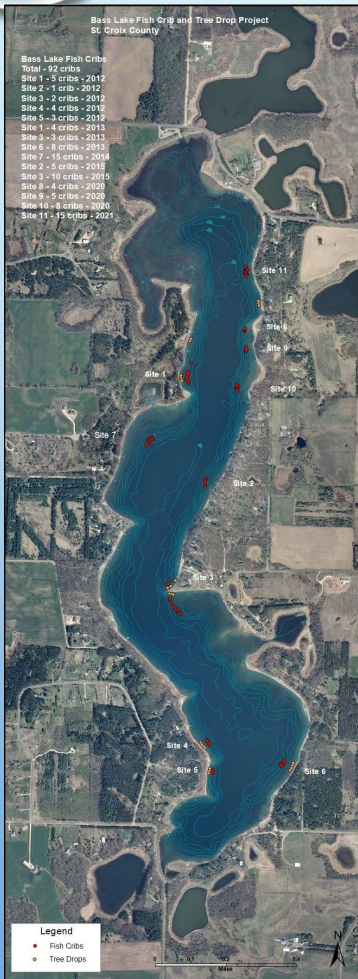


The background is a light blue gradient with several realistic water droplets of various sizes scattered across it. The droplets have highlights and shadows, giving them a three-dimensional appearance.

BASS LAKE REHABILITATION DISTRICT

LAKE PROTECTION GRANT LPT53317 PROJECTS

THRU 2021



32 FISH CRIBS BUILT AND DROPPED

LOCATIONS WERE DETERMINED BY WDNR



92 total fish cribs as of 2021; 8 in progress for a total of 100
 17 were built in 2020, placed at sites #8, 9, 10
 15 were built in 2021, placed at site #11

NATIVE SHORELINE PLANTING-WEST SIDE-143RD AVE



Before



After

NATIVE BLUFF PLANTING-EAST SIDE-HIDDEN OAK TRAIL



Before



After



After

PERMEABLE PATHWAY-WEST SIDE-WEST SHORE DRIVE



After



After

NATIVE SHORELINE PLANTING-EAST SIDE-HOWARD ROAD



During Planting



After