

Rostvold Half Moon Lake Conservancy Acquisitions

Land Management Plan

The Rostvold Acquisition consists of three parcels. All are located in Section 23, T35N, R17W. Lot 4 and Lot 5 are now owned in fee title by the Half Moon Lake Conservancy. Lot 4 is 20.28 acres and Lot 5 is 11.22 acres. The easement area is adjacent to Tamarack Creek. An 8.14 conservation easement is outlined in purple in plan maps. A 1.24 acre, 33-foot wide access easement runs just to the right (north and east) of the conservation easement border. The access easement provides access to Lots 4 and 5 and access along the conservation easement.

Three maps are included with the management plan. Both outline the acquired and eased areas. One is shown with an aerial photo. The second has the topographic map as the background. The third map indicates adjacent land uses. Note that the locations of lots, easements, crop lands, wetlands, etc. are approximate when placed on the background of the aerial photo and topographic map.

A.

1. Land cover conditions, vegetation, wetlands, farm fields, etc.

Lots 4 and 5 are made up of Tamarack Bay wetlands and forest upland.

The conservation easement area consists primarily of wetland adjacent to Tamarack Creek.

The access easement is along the edge of the upland area.

2. Structures such as roads, building, etc.

Lots 4 and 5 and the conservation easement area have no structures or buildings.

The access easement runs along an existing grassed pathway.

3. Drainage patterns, general topography, etc.

Lots 4 and 5 and the conservation easement area are generally flat. The surrounding area slopes gently to Tamarack Creek and toward the easement area and Tamarack Bay wetlands.

4. Adjacent land uses. (see land use map)

Lots 4 and 5 are bordered on the south and west by Tamarack Bay wetlands.

Lot 4 is bordered on the north by the conservation easement wetland and CRP land.

Lot 5 is bordered on the east by grassland.

Lot 5 is bordered on the north by CRP land.

5. Problem sites e.g., dumping areas, active erosion, barnyards, etc.

There are no problem sites on the lots or easement areas.

6. Site photos



Beginning of access easement looking south. Conservation easement is to the right.



Continuing along access easement looking south. Conservation easement is the right.



Tamarack Creek in conservation easement



Looking north from Tamarack Bay wetlands toward lots 4 and 5



Looking south toward lots



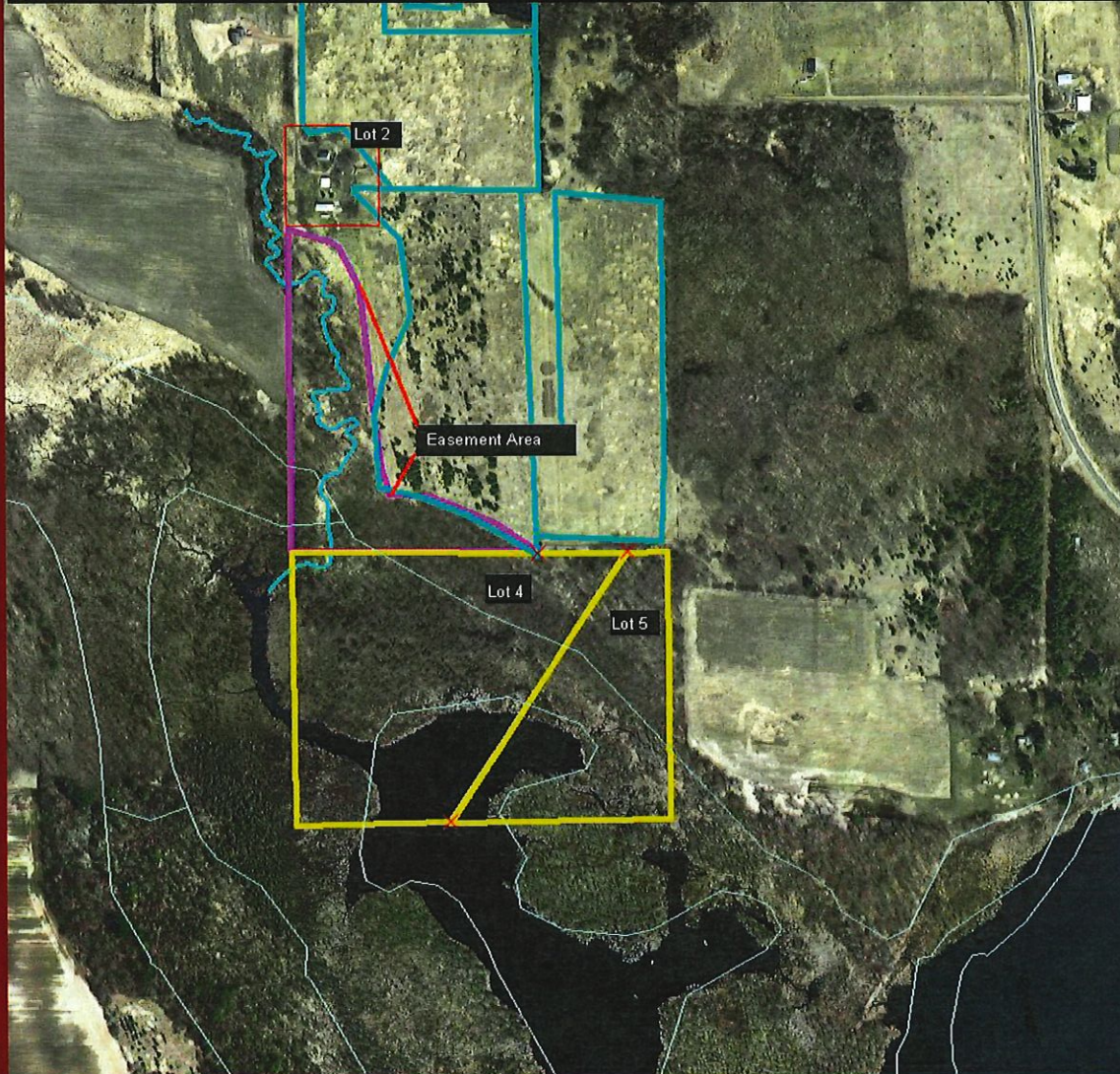
Lot 5

B. Proposed Conditions


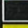
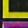


The site will be maintained in a natural condition. No changes in land cover or use are proposed.

1. The site may be used for scientific study by students or scientists with permission from the Half Moon Lake Conservancy Board. There are no plans to transfer, gift, or sell property rights to any other organization.
2. The Half Moon Lake Conservancy will manage and maintain the site.
3. The only planned maintenance or restoration work planned for the properties at this time is to monitor the properties for invasive species and to undertake appropriate control if identified.
4. There are no third party management agreements.
5. Since there are no development or land altering management activities proposed, the plan maps serve to describe proposed conditions.

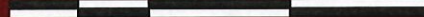
Rostvold Half Moon Lake Conservancy Acquisitions



LEGEND

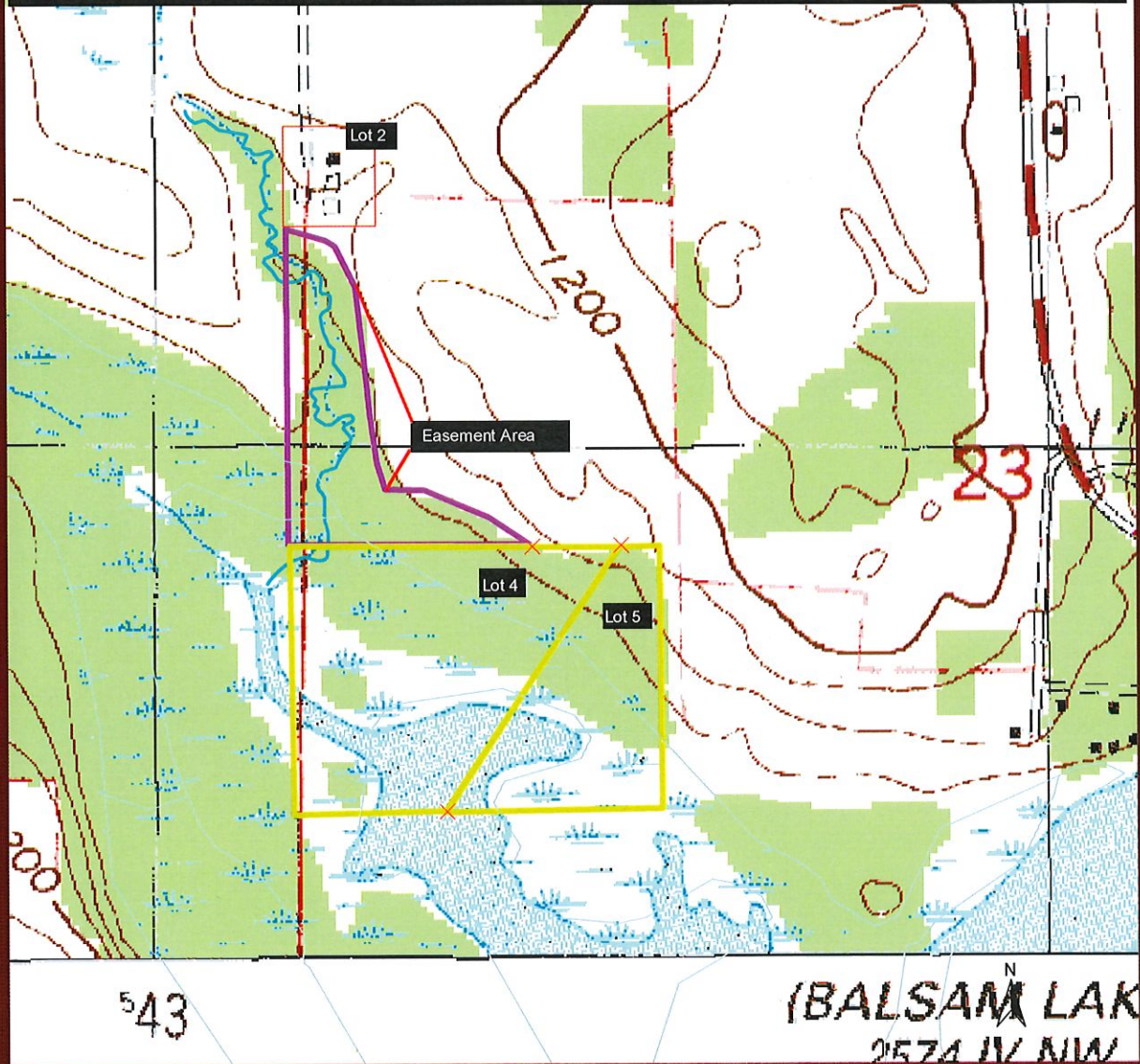
-  CRP land
-  Tamarack Bay Wetland
-  Donated lots
-  Easement area
-  Tamarack Creek

500 0 500 1000 Feet

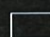





Map 1. Rostvold Acquisition Aerial Photo

Rostvold Half Moon Lake Conservancy Acquisitions



LEGEND

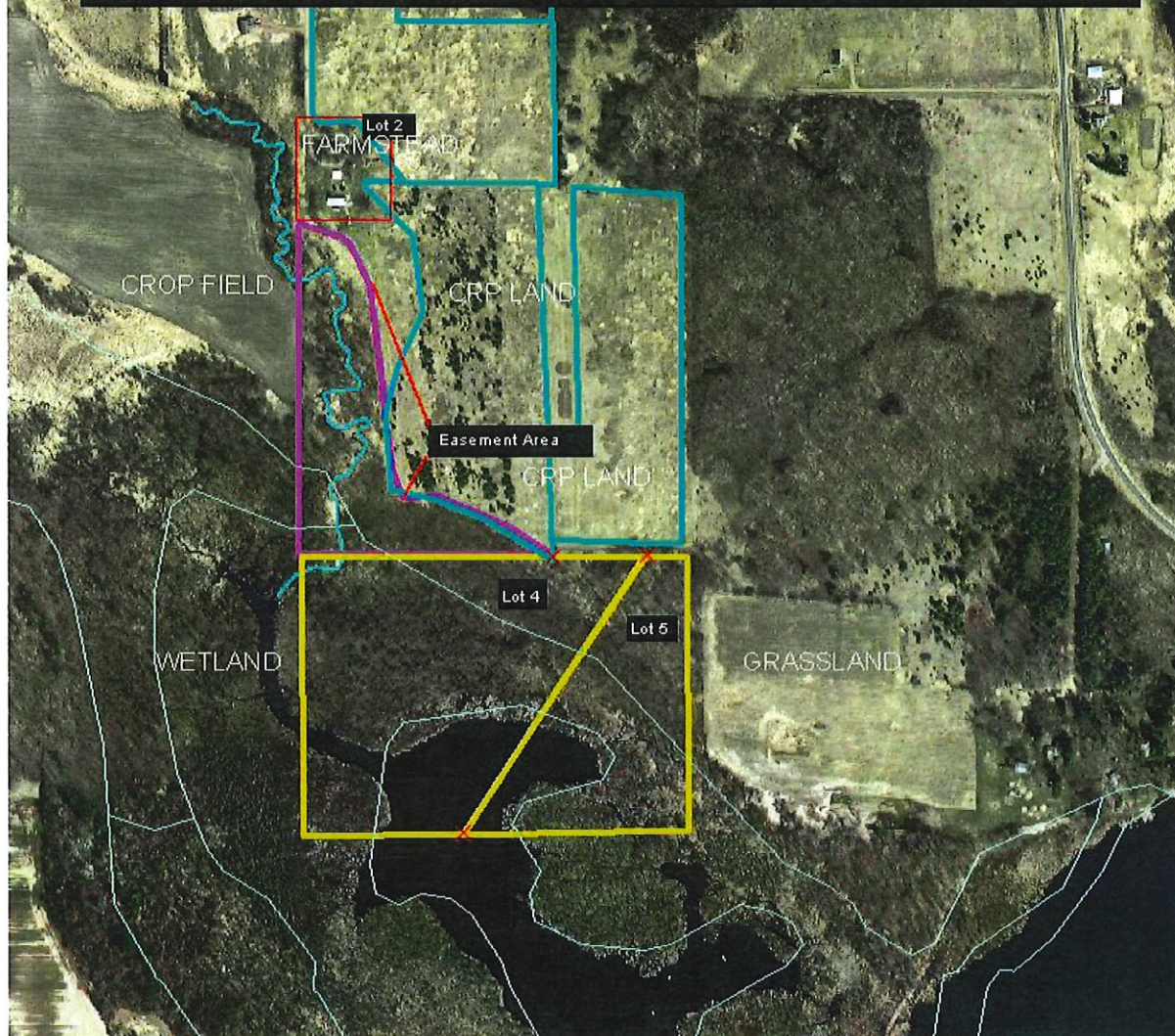
-  Tamarack Bay Wetland
-  Donated lots
-  Easement area
-  Tamarack Creek

500 0 500 1000 Feet


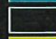





Map 2. Rostvold Acquisition Topographic Map

ROSTVOLD ADJACENT LAND USES



LEGEND

-  CRP land
-  Tamarack Bay Wetland
-  Donated lots
-  Easement area
-  Tamarack Creek

Map 3. Rostvold Acquisition Adjacent Land Uses