

Plot Date: 08/06/2020
 On: 08/06/2020
 File: C:\Users\Private\OneDrive\Documents\GIS\096\096-012_CD.dwg
 Xrefs: 996_12_Concept_V02.Xref

6			
5			
4			
3			
2			
1	08/06/2020	DEM	CONCEPT PLANS
NO	DATE	BY	REVISION



SUBMISSION DATE:
 XXXX/XXXX
 DESIGN BY: DRL
 DRAWN BY: DEM
 CHECKED BY: XXX
 EOR PROJECT NO.
 00996-0012

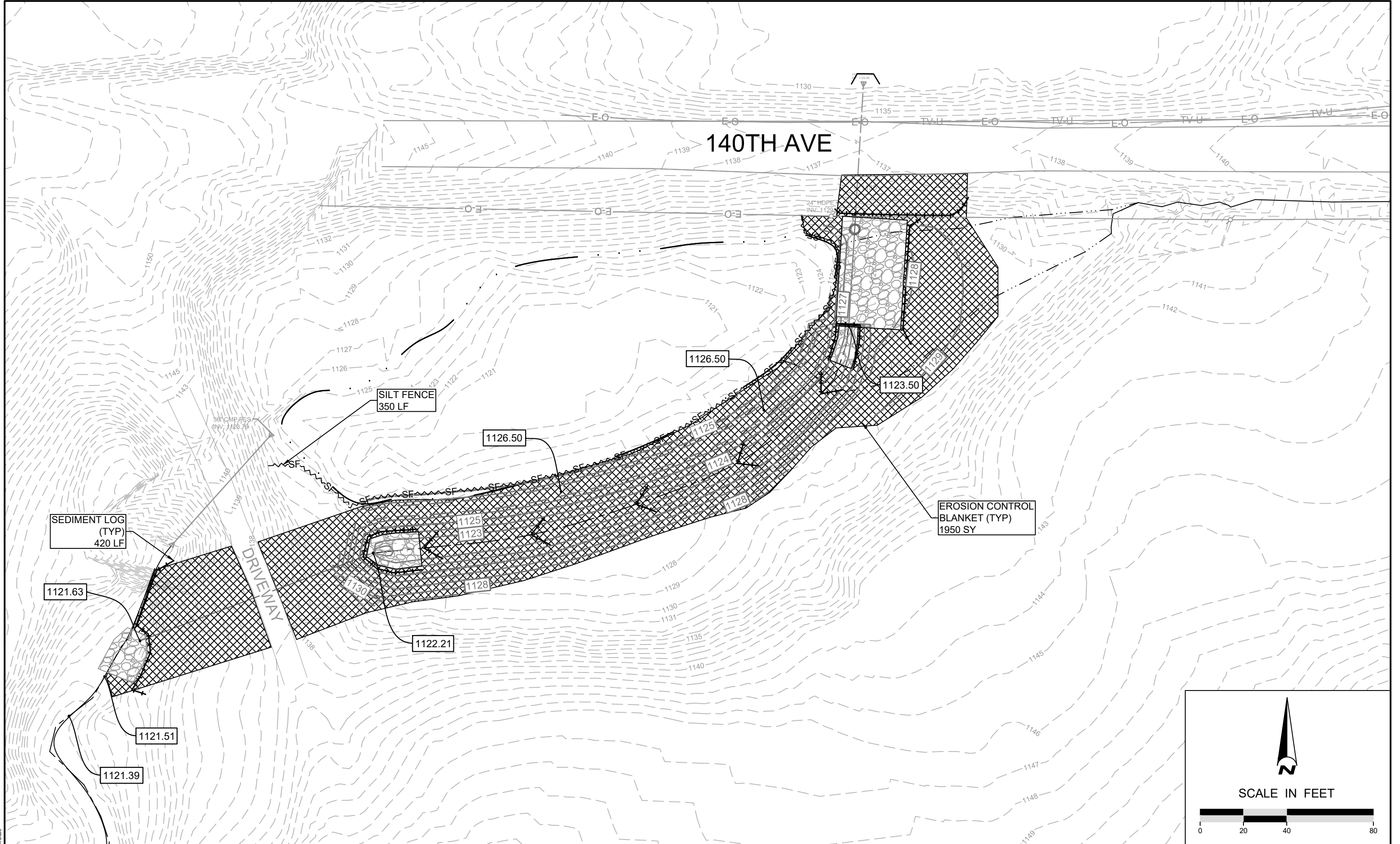
EOE Emmons & Olivier
 Resources, Inc.
 1919 University Ave W
 St. Paul, MN 55104
 Tele: 651.770.8448
 www.eorinc.com

DEER LAKE CONSERVANCY
 1492 150TH AVE
 ST. CROIX FALLS, WI 54024

WATERSHED ONE POND DIVERSION
 ST. CROIX FALLS, POLK COUNTY,
 WISCONSIN
 STATE PROJECT NO. --- CITY PROJECT NO. ---

GRADING PLAN
 SHEET 01 OF 02 SHEETS

NOT FOR CONSTRUCTION



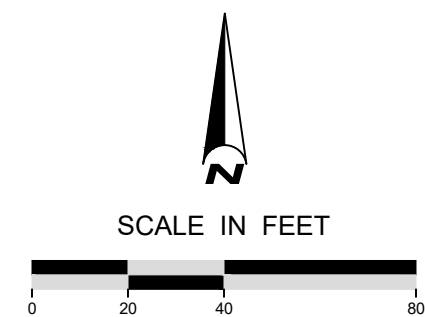
140TH AVE

DRIVEWAY

SEDIMENT LOG (TYP)
420 LF

SILT FENCE
350 LF

EROSION CONTROL
BLANKET (TYP)
1950 SY



File Path: G:\0619\0619\03
 Client: Private\0096_Deer_Lake_Conservancy\0012_Watershed_One_Pond_Diversion\09_GIS\09\09-012_CD.dwg
 Xrefs: 996_12_Concept_V02_X.dwg

6			
5			
4			
3			
2			
1	08/06/2020	DEM	CONCEPT PLANS
NO	DATE	BY	REVISION



SUBMISSION DATE: XX/XX/XXXX
DESIGN BY: DRL DRAWN BY: DEM CHECKED BY: XXX
EOR PROJECT NO. 00996-0012

EOR Emmons & Olivier
Resources, Inc.
1919 University Ave W
St. Paul, MN 55104
ecology Tele: 651.770.8448
community www.eorinc.com

DEER LAKE CONSERVANCY
1492 150TH AVE
ST. CROIX FALLS, WI 54024

WATERSHED ONE POND DIVERSION
ST. CROIX FALLS, POLK COUNTY,
WISCONSIN
STATE PROJECT NO. --- CITY PROJECT NO. ---

EROSION CONTROL & RESTORATION PLAN
SHEET 02 OF 02 SHEETS

NOT FOR CONSTRUCTION