



Stone Lake EWM Removal Report 2024

PO Box 1134 Minocqua, WI 54548



Stone Lake EWM Removal Summary

Dive Background: In August, Aquatic Plant Management LLC (APM) conducted five (5) days of Diver Assisted Suction Harvesting for Eurasian Watermilfoil (EWM) on Stone Lake in Washburn County, WI. The team focused their efforts at 2 sites as prioritized by the Shoreowners of Stone Lake Association. In total APM was able to remove **80.0 cubic feet of EWM** from Stone Lake.

Dive Results by Day

Date	Weather Conditions	Water Temp (F)	Underwater Dive Time (hrs)	AIS Removed (cubic ft)
7/8/2024	Thunderstorms	71	5.6	28.5
8/5/2024	Periods of rain	72	6.5	16.0
8/6/2024	Sunny	71	6.3	13.5
8/7/2024	Partly Cloudy	71	6.6	11.0
8/8/2024	Cloudy	71	5.8	11.0
Grand Total			30.8	80.0

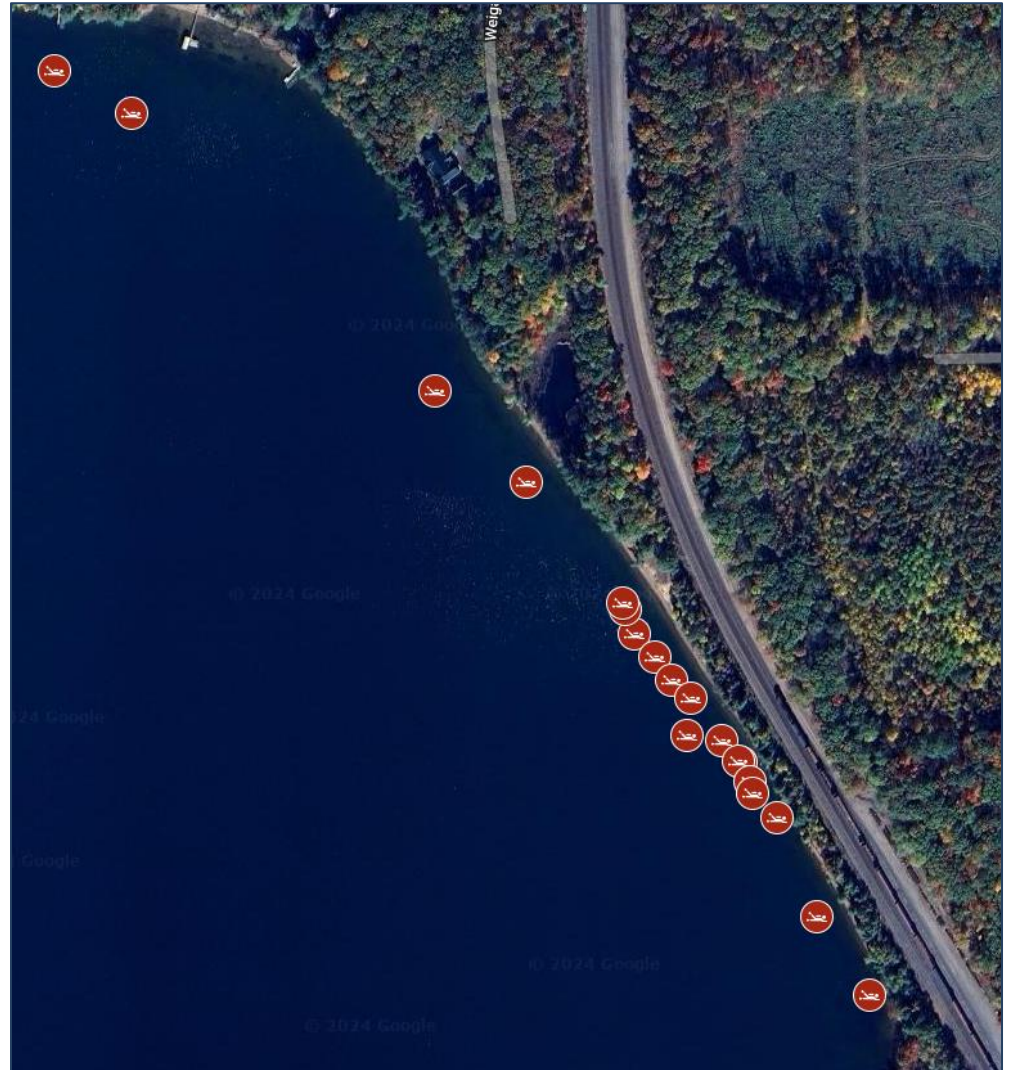
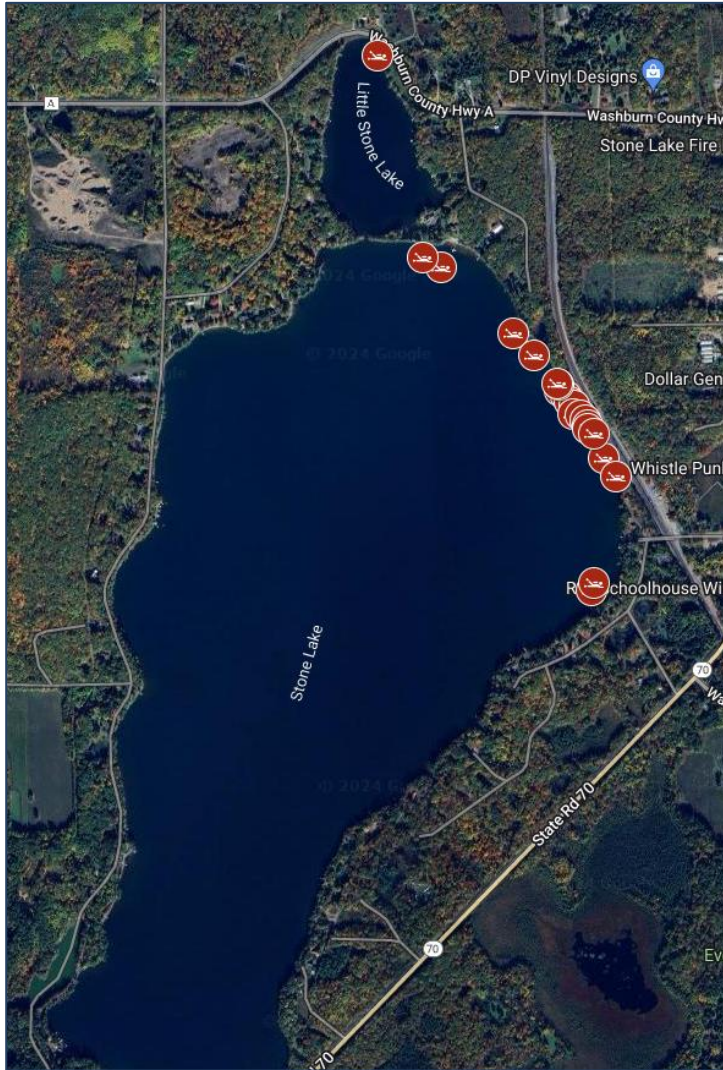


Dive Results by Site

Dive Location	Avg. Water Depth	# of Dives	Underwater Dive Time	AIS Removed (cubic feet)
Little Stone	2.0	1	2.7	4.5
NE Shoreline	8.3	21	28.1	75.5
Grand Total	8.0	22	30.8	80.0

Dive Highlights and Recommendations: The dive team focused most of their efforts in the northeastern shoreline where they removed 75.5 cubic feet of EWM. The team did shift to do some hand harvesting in Little Stone Lake in much shallower water (~2 feet). Overall, Stone Lake should continue to take an Integrated Pest Management (IPM) approach and evaluate different strategies to manage the EWM population on the lake. Continued monitoring and management efforts are important to prevent the spread of EWM throughout Stone Lake.

Map of Stone Lake Dive Sites





Detailed Diving Activities

Date	Dive Location	Latitude	Longitude	Underwater Dive Time (hrs)	AIS Removed (cubic ft)	AIS Density	Avg Water Depth (ft)	Native Species	Native By-Catch	Substrate Type
7/8/2024	NE Shoreline	45.84920	-91.54794	1.92	10.5	Scattered	6.5	Grasses	1.0	Organic/Sand
7/8/2024	NE Shoreline	45.84906	-91.54776	0.42	3.5	Scattered	4.0	Grasses	0.5	Organic/Sand
7/8/2024	NE Shoreline	45.84893	-91.54762	3.25	14.5	Scattered	6.5	Grasses	0.5	Organic/Sand
8/5/2024	NE Shoreline	45.84882	-91.54746	3.25	9.0	Scattered	8.0	Charophytes	1.5	Sand
8/5/2024	NE Shoreline	45.84934	-91.54701	1.50	1.0	Highly Scattered	8.5	Charophytes	0.0	Sand
8/5/2024	NE Shoreline	45.84938	-91.54803	1.17	4.5	Scattered	8.5	Charophytes	0.5	Sand
8/5/2024	NE Shoreline	45.84861	-91.54749	0.58	1.5	Small Plant Colony	7.0	Grasses	0.0	Sand
8/6/2024	NE Shoreline	45.85222	-91.55212	3.00	9.0	Small Plant Colony	15.0	Pondweeds	0.5	Sand
8/6/2024	NE Shoreline	45.85246	-91.55276	0.50	1.0	Small Plant Colony	13.0	Pondweeds	0.0	Sand
8/6/2024	NE Shoreline	45.85060	-91.54959	0.33	0.5	Small Plant Colony	10.5	Pondweeds	0.5	Sand
8/6/2024	NE Shoreline	45.84858	-91.54721	1.50	1.5	Scattered	8.0	Pondweeds	0.5	Sand
8/6/2024	NE Shoreline	45.84845	-91.54704	0.92	1.5	Scattered	8.0	Grasses	0.5	Sand
8/8/2024	NE Shoreline	45.84435	-91.54685	0.58	0.5	Small Plant Colony	10.0	Pondweeds	0.0	Sand
8/8/2024	NE Shoreline	45.84755	-91.54641	1.50	4.5	Scattered	7.0	Pondweeds	0.5	Sand
8/8/2024	NE Shoreline	45.84710	-91.54597	0.25	0.0	Single or Few	5.0	Grasses	0.0	Sand
8/8/2024	Little Stone	45.85737	-91.55436	2.67	4.5	Highly Scattered	2.0	Pondweeds	1.0	Organic/Sand
8/8/2024	NE Shoreline	45.85007	-91.54884	0.83	1.5	Small Plant Colony	7.0	Grasses	1.5	Sand
8/7/2024	NE Shoreline	45.84452	-91.54677	0.50	1.0	Highly Scattered	13.0	Elodea	0.0	Sand
8/7/2024	NE Shoreline	45.84846	-91.54707	1.25	0.5	Scattered	7.0	Grasses	0.0	Sand
8/7/2024	NE Shoreline	45.84834	-91.54697	1.17	0.5	Highly Scattered	7.0	Grasses	0.5	Sand
8/7/2024	NE Shoreline	45.84827	-91.54695	1.00	1.5	Scattered	7.0	Grasses	0.0	Sand
8/7/2024	NE Shoreline	45.84813	-91.54674	2.67	7.5	Scattered	7.0	Pondweeds	1.5	Sand
Total	22			30.76	80.0					