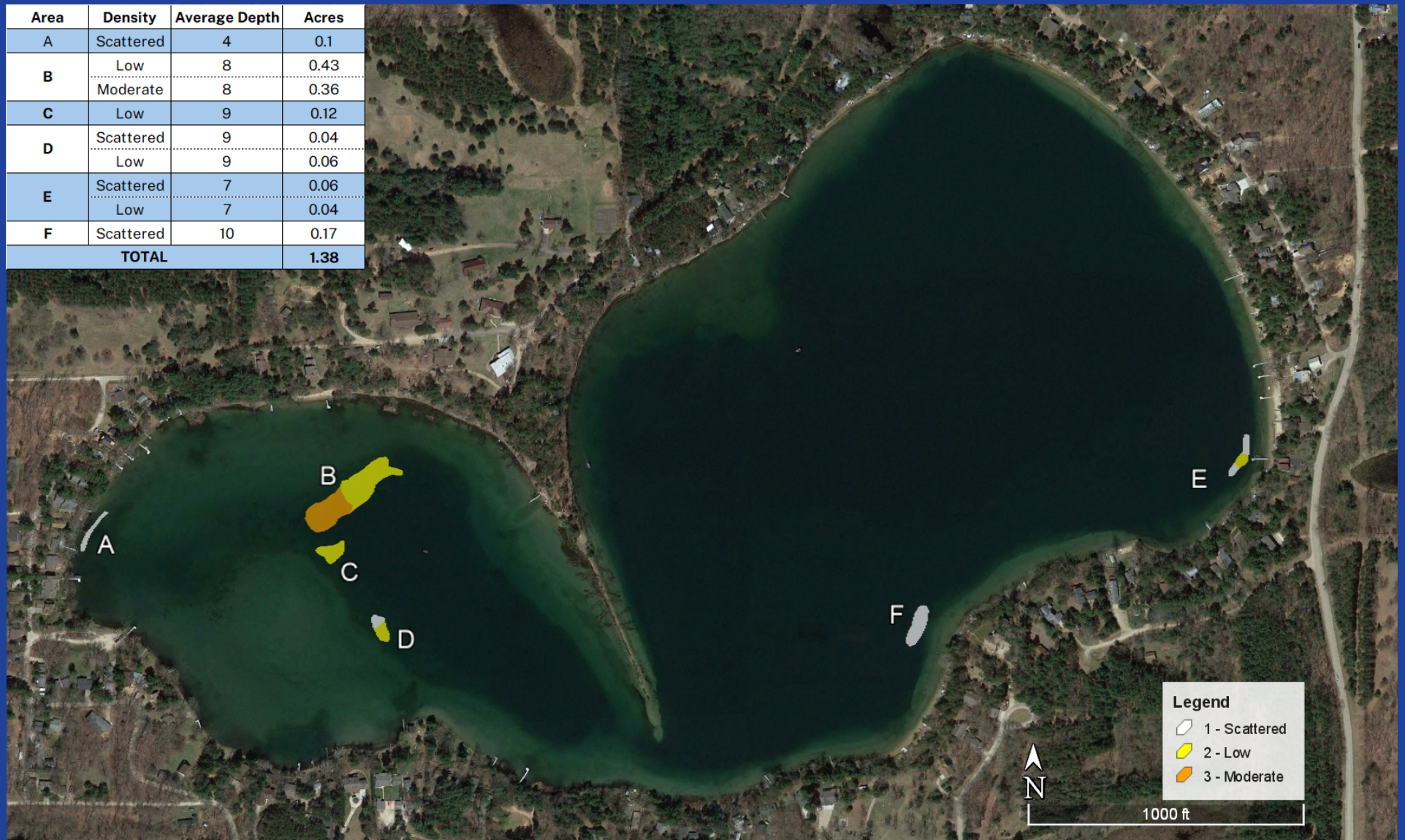


Area	Density	Average Depth	Acres
A	Scattered	4	0.1
B	Low	8	0.43
	Moderate	8	0.36
C	Low	9	0.12
D	Scattered	9	0.04
	Low	9	0.06
E	Scattered	7	0.06
	Low	7	0.04
F	Scattered	10	0.17
TOTAL			1.38



Eurasian Water-Milfoil Locations

Fig 1
Pine Lake
Waushara Co.
Surveyed: 05/02/25