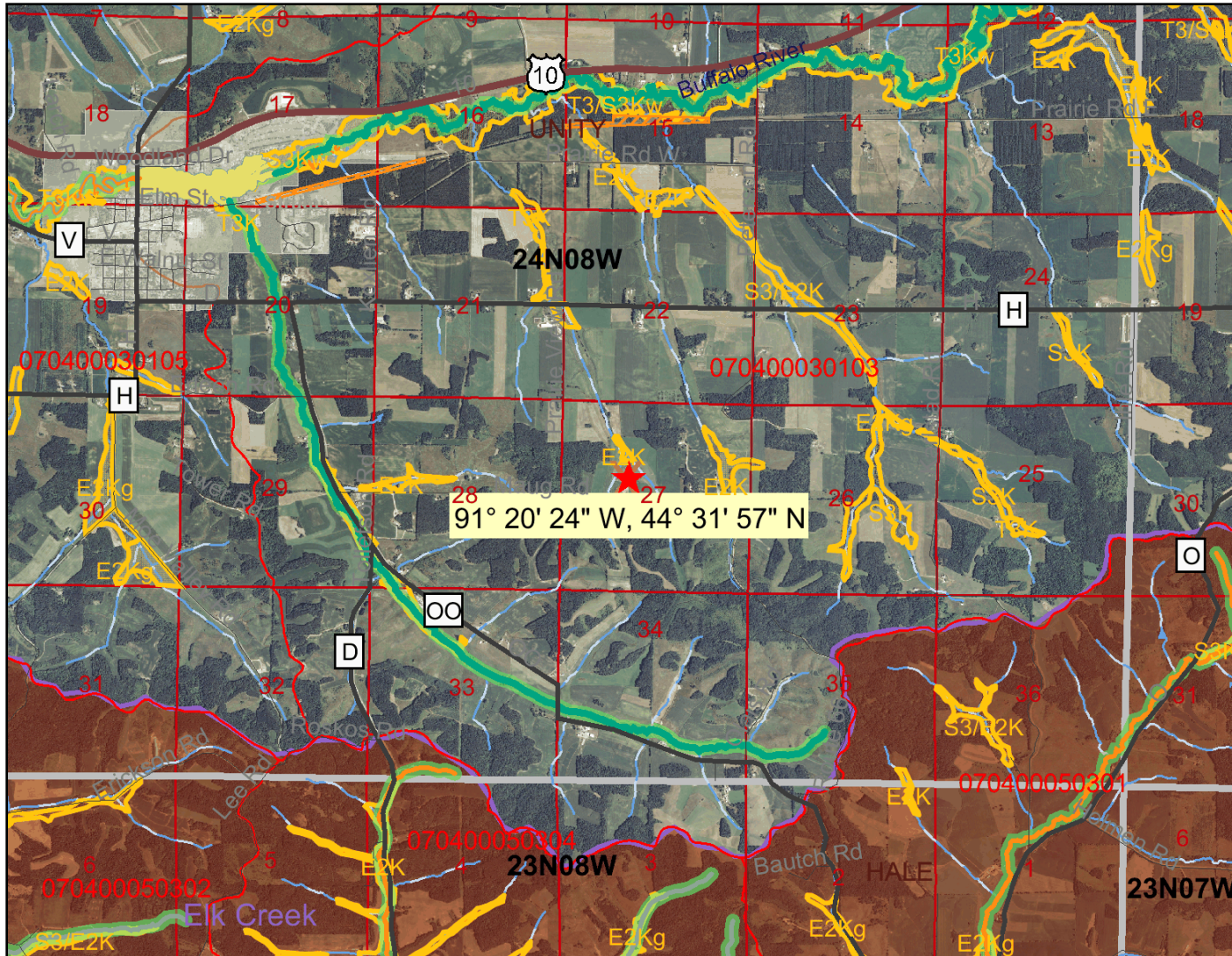


Trempealeau Cnty-Monson Farms-Sep 29, 2010



91° 20' 24" W, 44° 31' 57" N

Legend

- Railroads
- Major Highways
 - Interstate
 - State Highway
 - U.S. Highways
 - County Roads
 - Local Roads
- NR104 Lines
- Outstanding and Exceptional Streams
 - Exceptional
 - Outstanding
 - Localational QA In Progress
 - Localational Data Source Conflict
 - Outstanding and Exceptional Lakes
 - Exceptional
 - Outstanding
 - Localational QA In Progress
 - Localational Data Source Conflict
- PRF Other River Public Rights Features
 - PRF Sensitive Rivers
 - PRF Other Public Rights Features
 - PRF Sensitive Areas of Lakes
 - ASNRI Outstanding and Exceptional Streams
- ORW
- ORW
- ERW

0 5500 11000 16500 ft.

Scale: 1:56,326

This map is a user generated static output from an Internet mapping site and is for general reference only. Data layers that appear on this map may or may not be accurate, current, or otherwise reliable. THIS MAP IS NOT TO BE USED FOR NAVIGATION.