

## Barron County SWCD Japanese Knotweed Rapid Response Grant Work in 2010

Barron County had identified two sites with populations of Japanese Knotweed in the last few years: the Rice Lake Lumber Hall of Fame and the Chetek dam. Both of the sites were of concern for the potential for spreading along the Red Cedar and Chetek Rivers.

Some work had been done on the Chetek Dam site in 2007 as part of reconstruction of the emergency spillway. The grove was hand cut and herbicide was immediately applied to the hollow cups of the stems. The cut stems were dried and burned on site. The area was bulldozed, topsoil spread and turf reinforcement matting installed as the area is the emergency spillway for the dam. In subsequent years the area has been mowed and spot sprayed. However, there were several groves along the water and outside of the spillway area that were neglected.

Work in the summer of 2010 began with periodic mowing by the City of Chetek with a tractor mounted deck mower. This was done to deplete the plant of its energy stores. On July 22, I hand cut the stems of the grove along the water to continue this depletion. The cuttings were removed from the water.



Work then turned to spraying the groves with a 3% 2-4-D, 4% Habitat mixture. This was done on three occasions at the Chetek site in September. A general first spraying and then subsequent efforts to hit plants missed on the previous trips.

The area was sprayed on September 1, 16, 27, 28 and October 4.





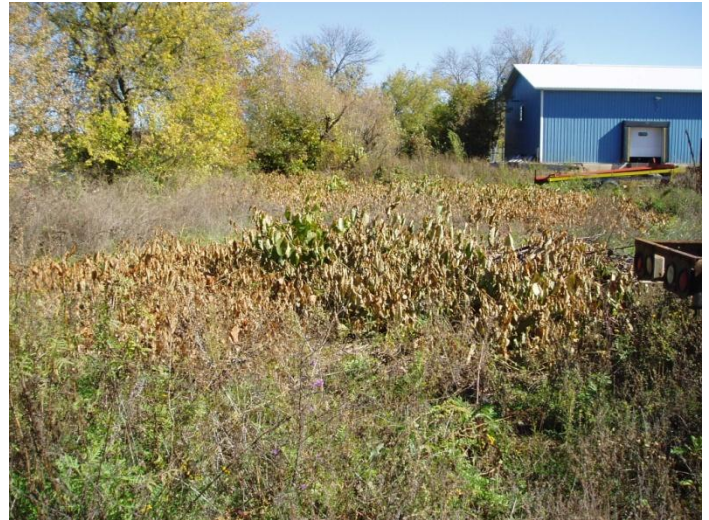
The Rice Lake Lumber Hall of Fame site did not allow for access for mowing equipment in the summer, however a dedicated group of two volunteers cut the groves by hand three times, once each in June, July, and August. This picture is from early July after the June cutting. No spraying had been done to this point.



The spraying schedule for the site was the same as the Chetek site: September 1, 16, 27, 28 and October 4.



August 28, 2010



September 26, 2010

With the site being adjacent to a large, warm lake, I don't feel that a killing frost had occurred at the site even on October 19; when the majority of the site was dead and dried, occasional plants were still alive. This gives the appearance that the herbicide was effective in killing the vegetation during a time of translocation of energy and, more importantly, poison to the roots.

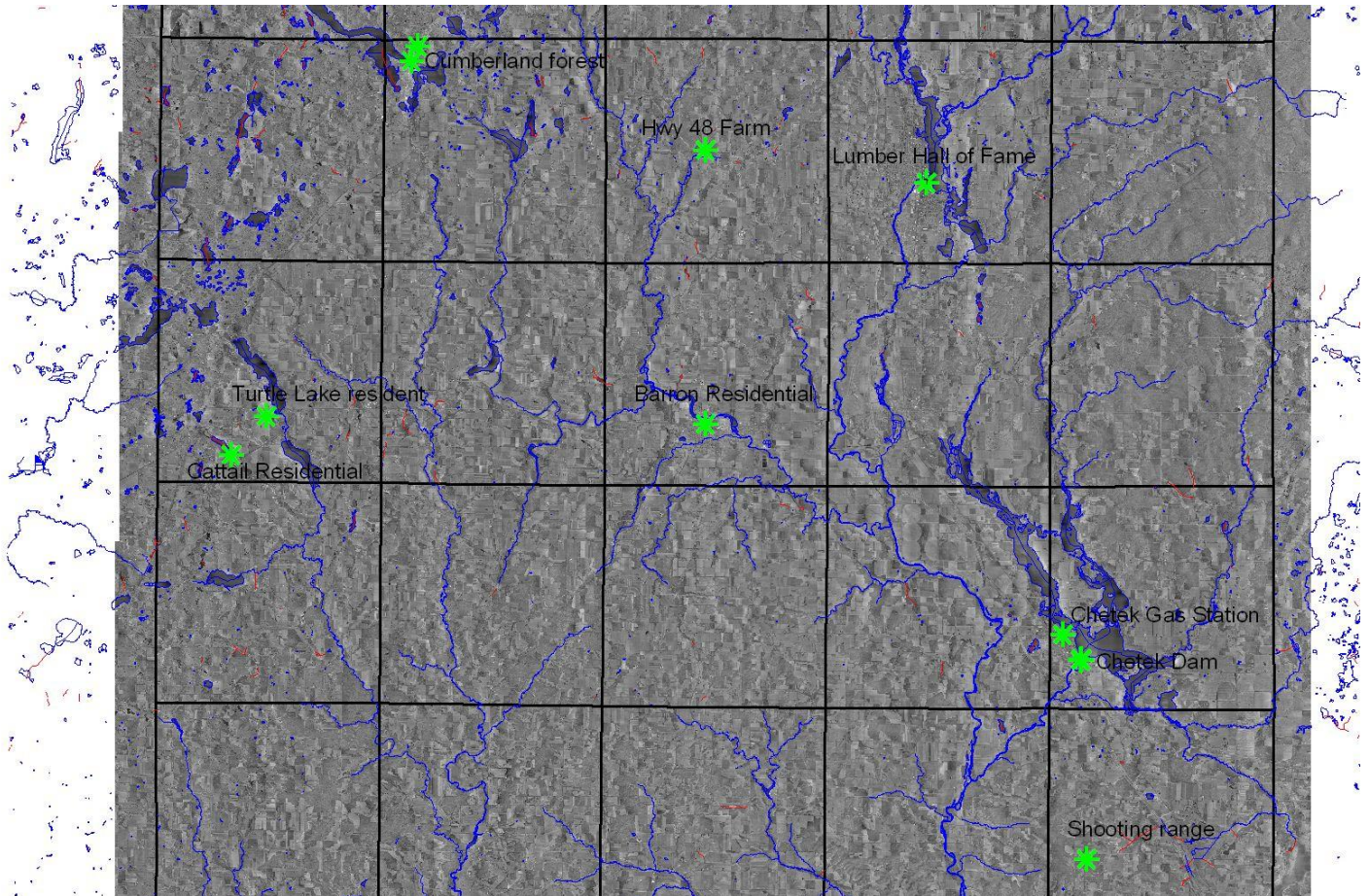


All we can do now is wait until spring to see what comes back. Hopefully, it will be a reduced population. We will continue to monitor, cut, mow and spray the sites in the same fashion we did this year. We have herbicide remaining from this year, and now have the equipment to apply it with.



Like many things in life, once you start looking for Japanese Knotweed, you find it. The sites have been entered into the Barron GIS for continued monitoring.

### Known Sites of Japanese Knotweed in Barron County Wisconsin, 2010.



Lumber Hall of Fame – Treated

Chetek Dam – Treated

Chetek Gas Station – Upland. Small grove on the east side of the building. Has been cut by owner. Appears to be under control.

Barron Residential – Upland. Small grove in neighborhood north of train depot.

Turtle Lake Residential – Upland. Residential site on north side of US Hwy 8 – Identified fall 2010.

Cattail Residential – Upland. Large grove at intersection of CO Hwy K and Cattail Trail. Identified fall 2010.

Cumberland - Upland – 2 sites on NE corner of town. East of WI Hwy 63 – Identified summer 2010.

Hwy 48 Farm – Upland. Along fence on south side of barn. North sided of Hwy 48 – Identified ~2008.

Shooting Range Upland – Reported to me by another source in 2009.

At this time there is not staff time available to treat the upland sites. They will continue to be monitored and information will be sent to the landowners encouraging them to control this plant.