

## DUCK LAKE SUMMARY AND CONCLUSIONS

The 2008 treatment worked relatively well on the EWM colonies in Duck Lake. No EWM was found at Duck-B and therefore is not recommended for treatment in 2009 (Maps 8 & 18). While almost no EWM was found within Duck-C after the treatment, a dominant colony was located to the southeast and a scattered colony was located to the northeast. These areas are recommended for treatment in 2009 (Duck-B-09 & Duck-C-09, Map 18). Duck-A was reduced to just a scattering of EWM plants after the treatment and is recommended for treatment in 2009 as an attempt to increase the likelihood of long-term control within this site (Map 8). Figure 28 shows that seven locations contained EWM before the treatment and only one sub-sample location contained EWM after the treatment (Figure 24). Additionally, the one sub-sample location that contained EWM had a rake fullness of one, the lowest of the ratings (Figure 24). Table 9 shows that the qualitative success criteria were met for all the 2008 treatment sites on Duck Lake.

Three native monocots were found to have significantly increased within the 2008 treatment sites (Figure 25). While Illinois pondweed was shown to reduce slightly within the treatment areas, it was not considered to be statistically significant and therefore could be a result of random variation.

**Table 9. Evaluation of 2008 EWM treatment on Duck Lake following success criteria standards.** N= Number of point-intercept sub-sample locations.

Site	Acres	Dose	EWM % Occurrence			EWM Density			Notes
			N	% Change	Criteria Met	Before	After	Criteria Met	
Duck - A	2.5	150	4	66.7	ISS	D=1 & Scat	Highly Scat	Yes	Area was expanded in spring and therefore sub-sampling was not distributed throughout entire TA.
Duck - B	0.4	150	1	100.0	ISS	D=1	None	Yes	Area was expanded in spring and therefore sub-sampling was not distributed throughout entire TA. Small overlap exists with EWM colonies to east & west of '08 TA.
Duck - C	3.7	150	4	100.0	ISS	D=1	D=1 & None	Yes	

ISS = Insufficient Sample Size

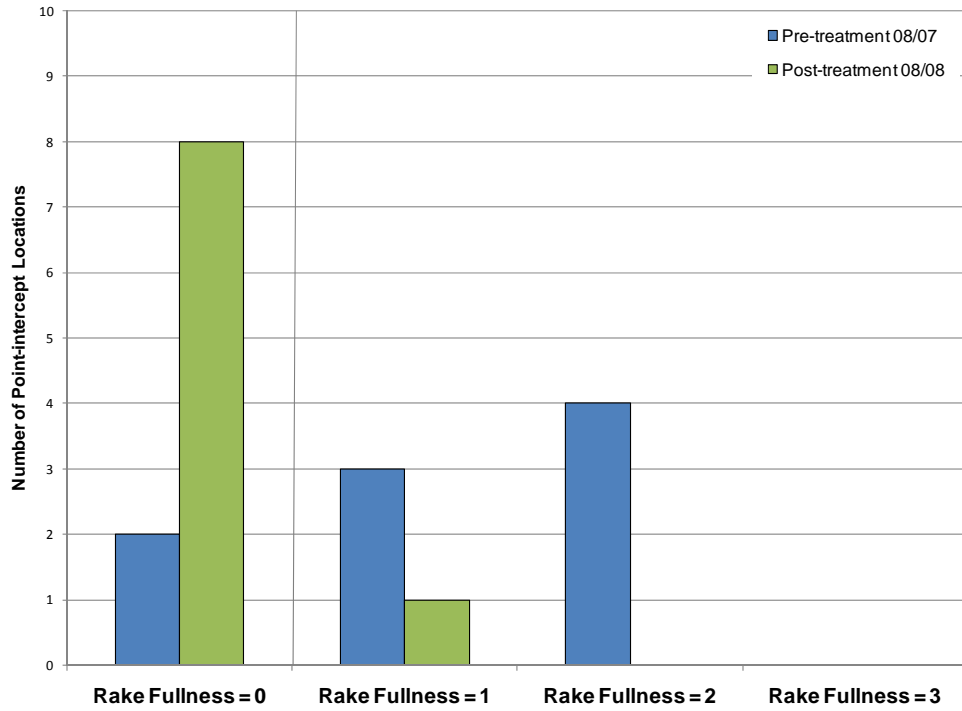


Figure 24. EWM rake fullness distribution within treated areas on Duck Lake.

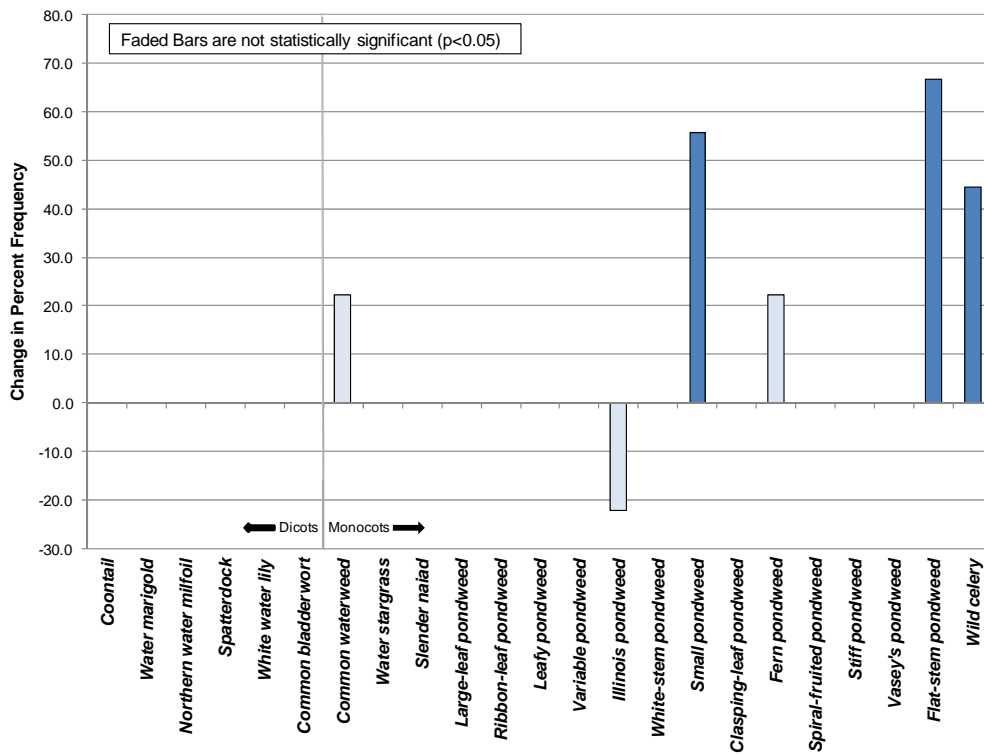
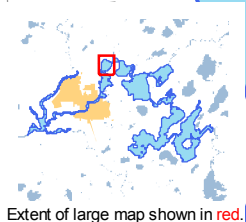
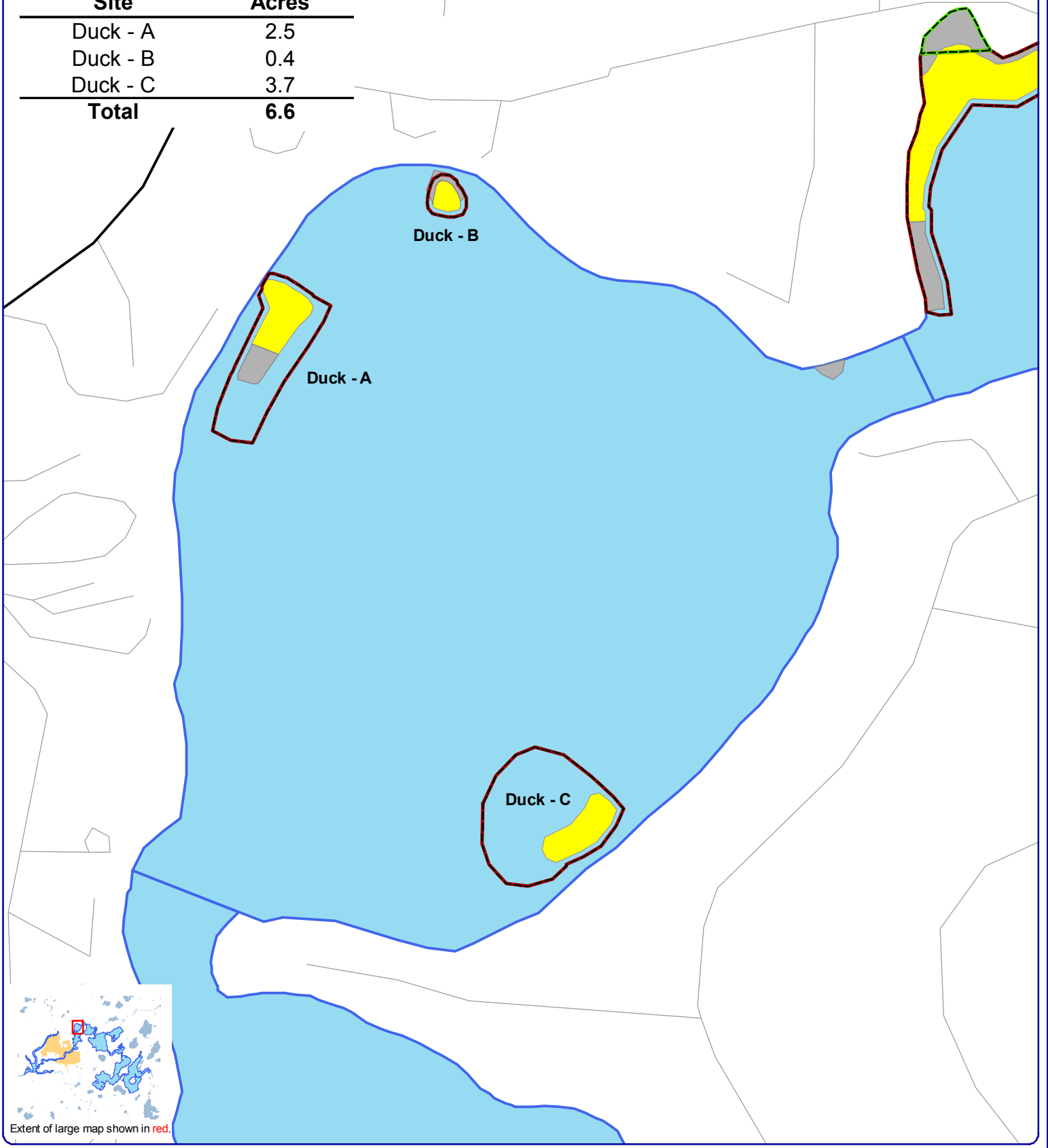


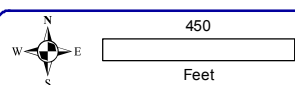
Figure 25. Native plant change in percent frequency from 2007 to 2008 within treatment areas on Duck Lake.

**Treatment Areas - 150 lbs/acre**

Site	Acres
Duck - A	2.5
Duck - B	0.4
Duck - C	3.7
<b>Total</b>	<b>6.6</b>



Extent of large map shown in red.



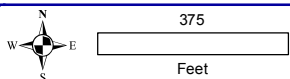
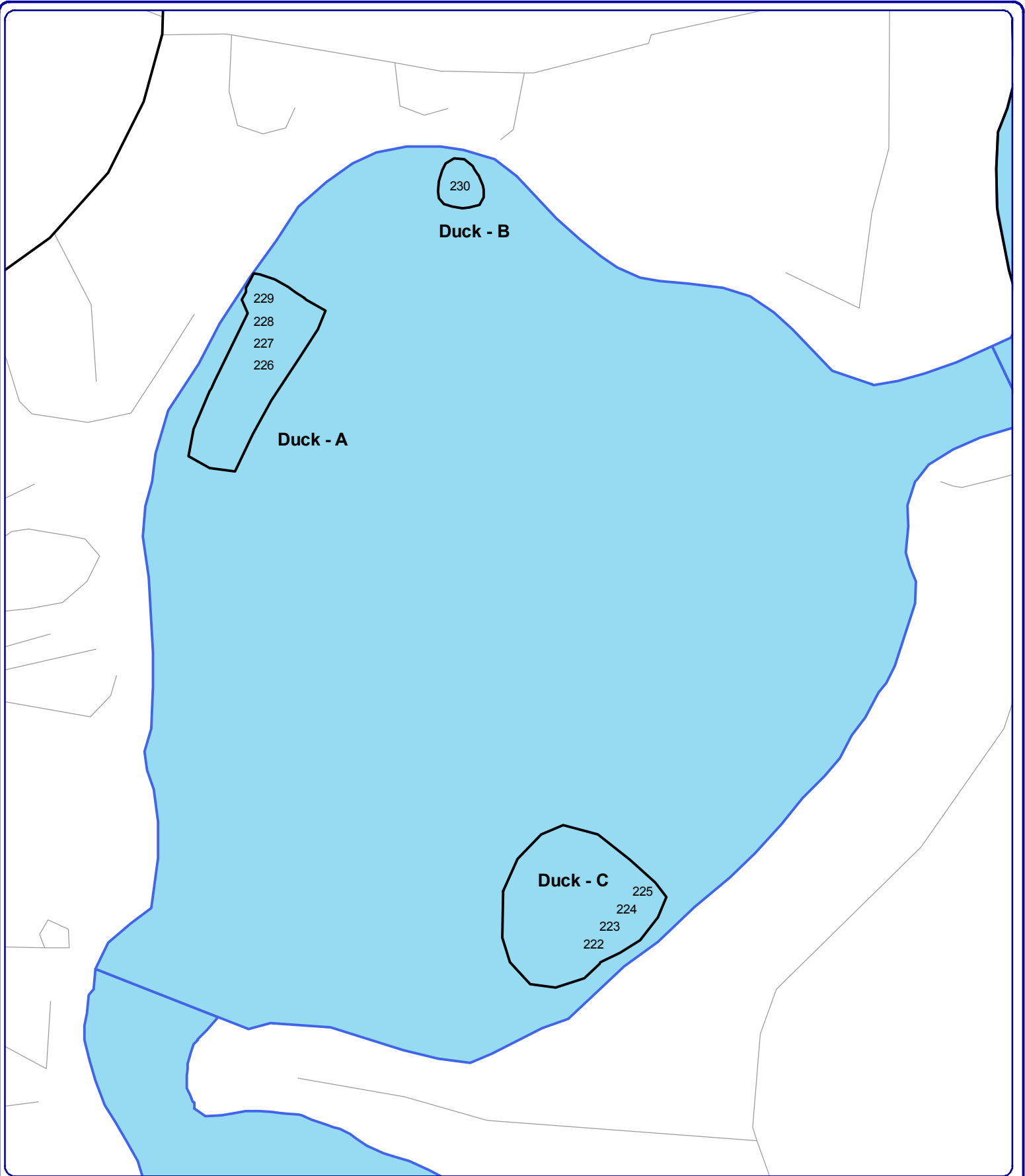
**Onterra LLC**  
 Lake Management Planning  
 135 South Broadway Suite C  
 De Pere, WI 54115  
 920.338.8860  
 www.onterra-eco.com

Source:  
 Roads & Hydro: WDNR  
 Aquatic Plants: Onterra, 2008  
 Map Date: December 31, 2008  
 File Name: ERC\_2008Treat\_Duck.mxd

**Legend**

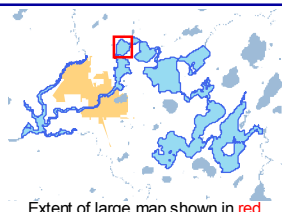
- 2007 EWM Colonies**
- Highly Scattered (*none found*)
  - Scattered
  - Dominant
  - Highly Dominant (*none found*)
  - Surface Matting (*none found*)
- 2008 Treatment Areas**
- Proposed Treatment Area (150 lbs/acre)
  - Proposed Treatment Area (100 lbs/acre)

**Map 8**  
**Duck Lake**  
 Vilas County, Wisconsin  
**2008 EWM Final Treatment Areas**



**Onterra LLC**  
 Lake Management Planning  
 135 South Broadway Suite C  
 De Pere, WI 54115  
 920.338.8860  
 www.onterra-eco.com

Sources:  
 Roads & Hydro: WDNR  
 Aquatic Plants: Onterra, 2008  
 Map date: December 30, 2008  
 File Name: ERC\_Duck\_EWM\_Treat\_T08\_PL.mxd



**Legend**

- # Point-intercept sub-sample location
- ⬭ 2008 EWM Treatment Area

**Appendix A**  
**Duck Lake**  
 Vilas County, Wisconsin  
 2008 EWM Treatment  
 Point-Intercept  
 Monitoring Locations