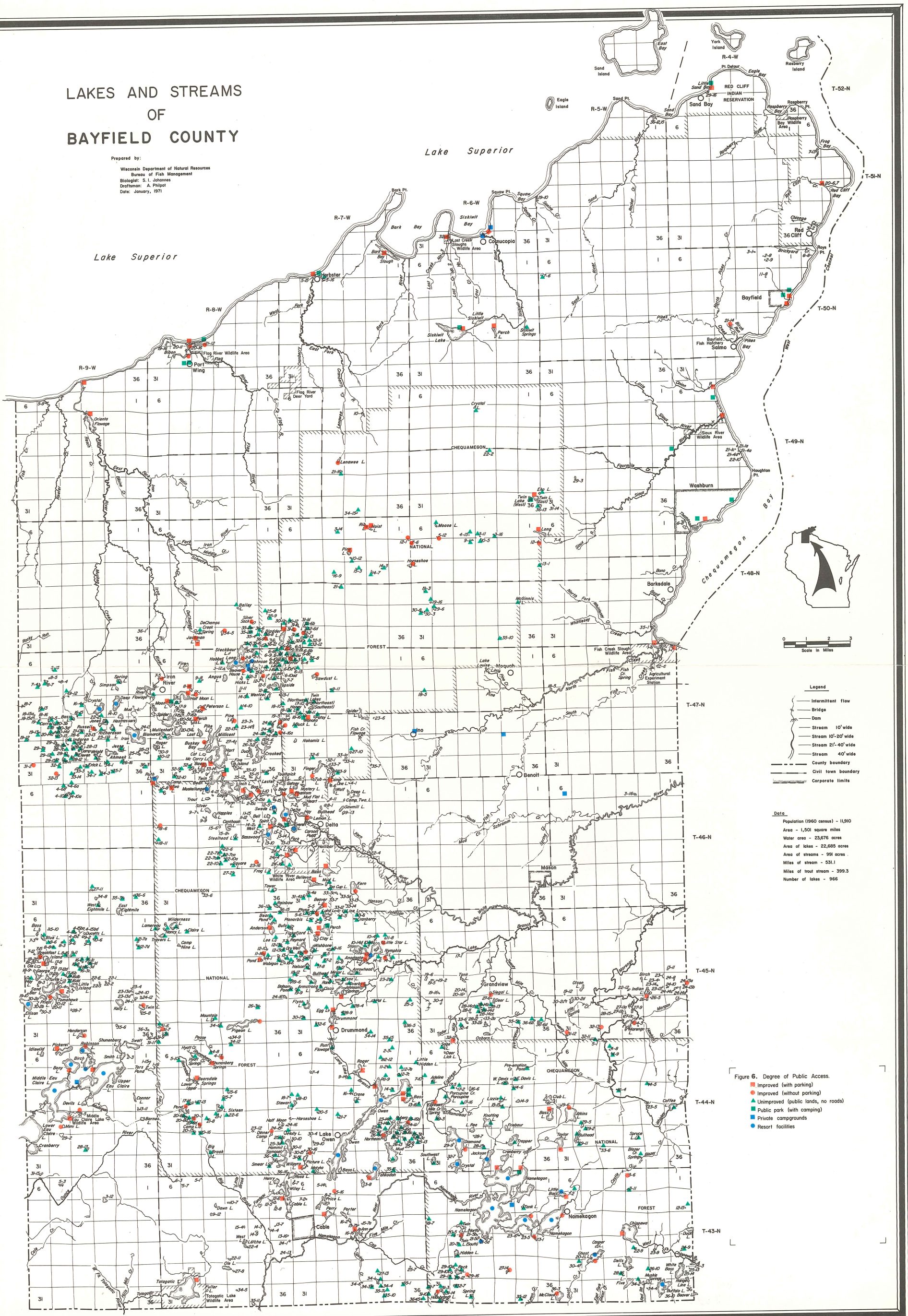


LAKES AND STREAMS OF BAYFIELD COUNTY

Prepared by:
 Wisconsin Department of Natural Resources
 Bureau of Fish Management
 Biologist: S. J. Johannes
 Draftsman: A. Pajouk
 Date: January, 1971

Lake Superior

Lake Superior



- Legend**
- Intermittent flow
 - Bridge
 - Dam
 - Stream 10' wide
 - Stream 10'-20' wide
 - Stream 21'-40' wide
 - Stream 40' wide
 - - - County boundary
 - - - Civil town boundary
 - - - Corporate limits

Data

Population (1960 census) - 11,910
 Area - 1,501 square miles
 Water area - 23,676 acres
 Area of lakes - 22,685 acres
 Area of streams - 931 acres
 Miles of stream - 531.1
 Miles of trout stream - 399.3
 Number of lakes - 966

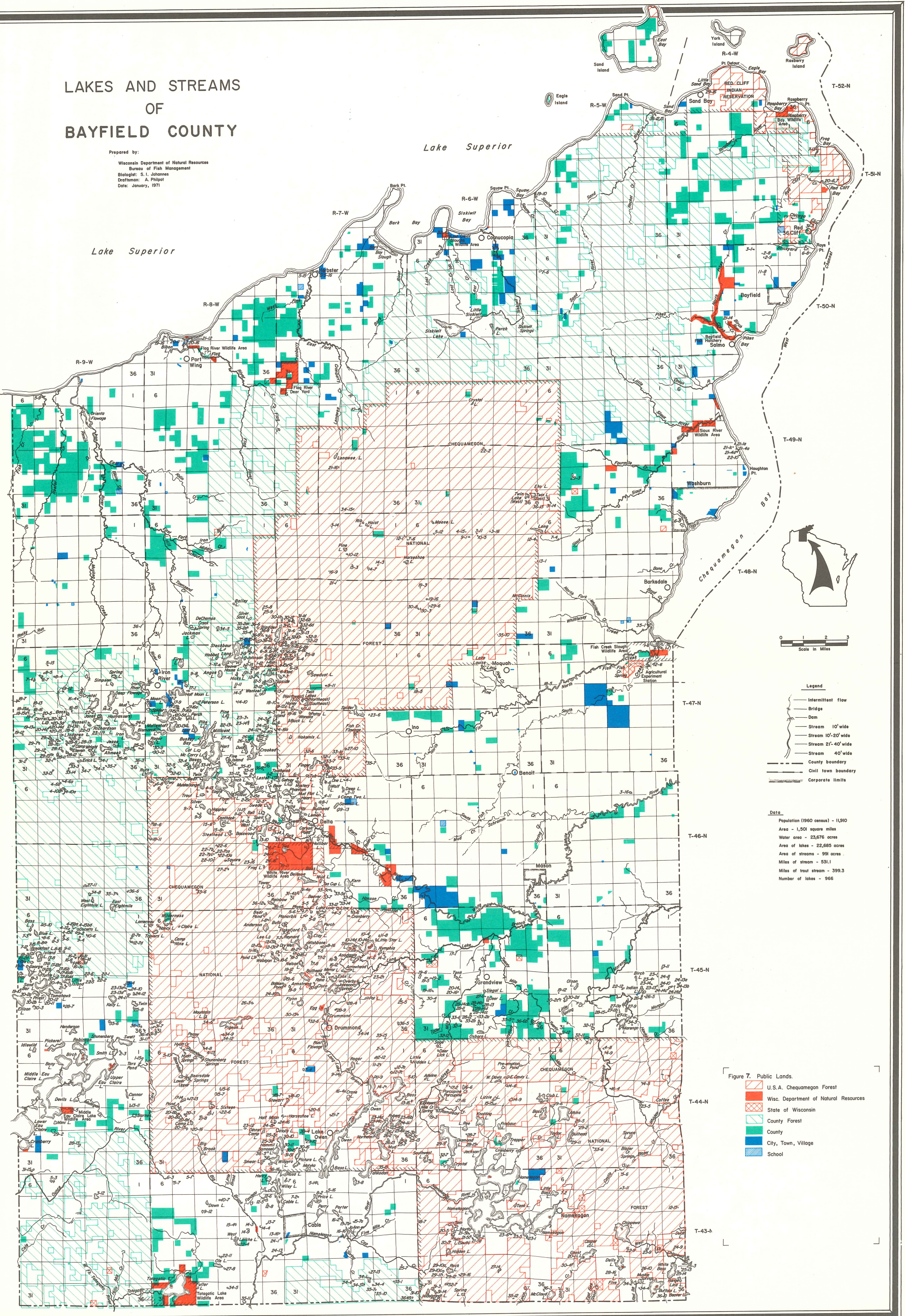
- Figure 6. Degree of Public Access.**
- Improved (with parking)
 - Improved (without parking)
 - ▲ Unimproved (public lands, no roads)
 - Public park (with camping)
 - Private compounds
 - Resort facilities

LAKES AND STREAMS OF BAYFIELD COUNTY

Prepared by:
 Wisconsin Department of Natural Resources
 Bureau of Fish Management
 Biologist: S. J. Johannes
 Draftsman: A. Philpot
 Date: January, 1971

Lake Superior

Lake Superior



Scale in Miles
 0 1 2 3

- Legend**
- Intermittent flow
 - Bridge
 - Dam
 - Stream 10' wide
 - Stream 10'-20' wide
 - Stream 21'-40' wide
 - Stream 40' wide
 - County boundary
 - Civil town boundary
 - Corporate limits

Data

- Population (1960 census) - 11,910
- Area - 1,501 square miles
- Water area - 23,676 acres
- Area of lakes - 22,685 acres
- Area of streams - 991 acres
- Miles of stream - 531.1
- Miles of trout stream - 399.3
- Number of lakes - 966

- Figure 7. Public Lands.**
- U.S.A. Chequamegon Forest
 - Wisc. Department of Natural Resources
 - State of Wisconsin
 - County Forest
 - County
 - City, Town, Village
 - School

