

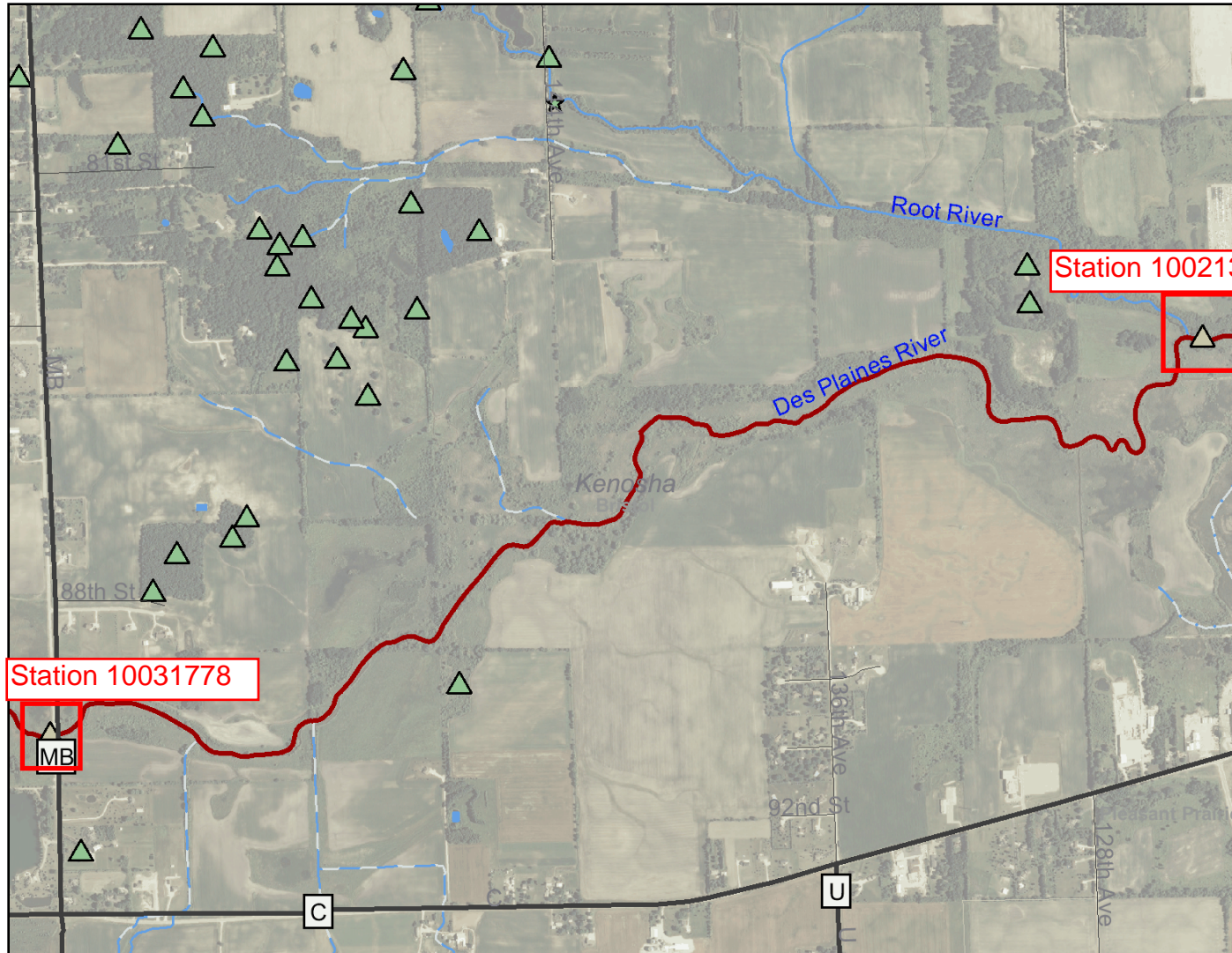
Decision to not list Des Plaines River (WBIC 734000):

WisCALM requires a minimum of 6 phosphorus samples that are “collected once per month, for six months from May through October, ideally within the same year.” In the case of Des Plaines River there were six TP samples within the assessment window of 2001-2010, however the samples came from two different sites (see attached map).

Station ID	Start Date/Time	Result	Units
10021364	05/25/2010 12:47	0.151	MG/L
10021364	06/16/2010 13:30	0.165	MG/L
10021364	07/28/2010 13:02	0.288	MG/L
10021364	08/17/2010 13:18	0.131	MG/L
10021364	09/21/2010 11:30	0.129	MG/L
10031778	10/27/2010 10:20	0.168	MG/L

Station 10021364 is located downstream the confluence with the Root River while station 10031778 is located several miles upstream from this position. The stations are not comparable enough to combine the 2010 data for an assessment. Based on this Des Plaines River will be reassigned to Category 3 and can be assessed for the next listing cycle.

Des Plaines River 734000 Stations



Legend

Major Highways

- Interstate
- State Highway
- U.S. Highways
- County Roads
- Local Roads

SWIMS Monitoring Station Points With Data

- Station with historic data
 - Station with recent data
- ### SWIMS Monitoring Station Points
- Inactive Obsolete
 - New Pending
 - Inactive Pending
 - FHDB Pending
 - Active

SWIMS Monitoring Station Lines With Data

- Station with historic data
 - Station with recent data
- ### SWIMS Monitoring Station Lines

- Active
 - Inactive Obsolete
 - New Pending
 - Not defined
- ### SWIMS Monitoring Station Areas With Data

- Station with historic data
 - Station with recent data
- ### SWIMS Monitoring Station Areas

- Active



Scale: 1:20,780

0 2000 4000 6000 ft.

This map is a user generated static output from an Internet mapping site and is for general reference only. Data layers that appear on this map may or may not be accurate, current, or otherwise reliable. THIS MAP IS NOT TO BE USED FOR NAVIGATION.