

**Pictures for 2012 Klimek Farm Barnyard and Manure Storage Project
TRC-GB07-38000-11 A; CSA 11-KlimekD-01**

Original aerial photo from the grant application. White text boxes explain changes from the original design.

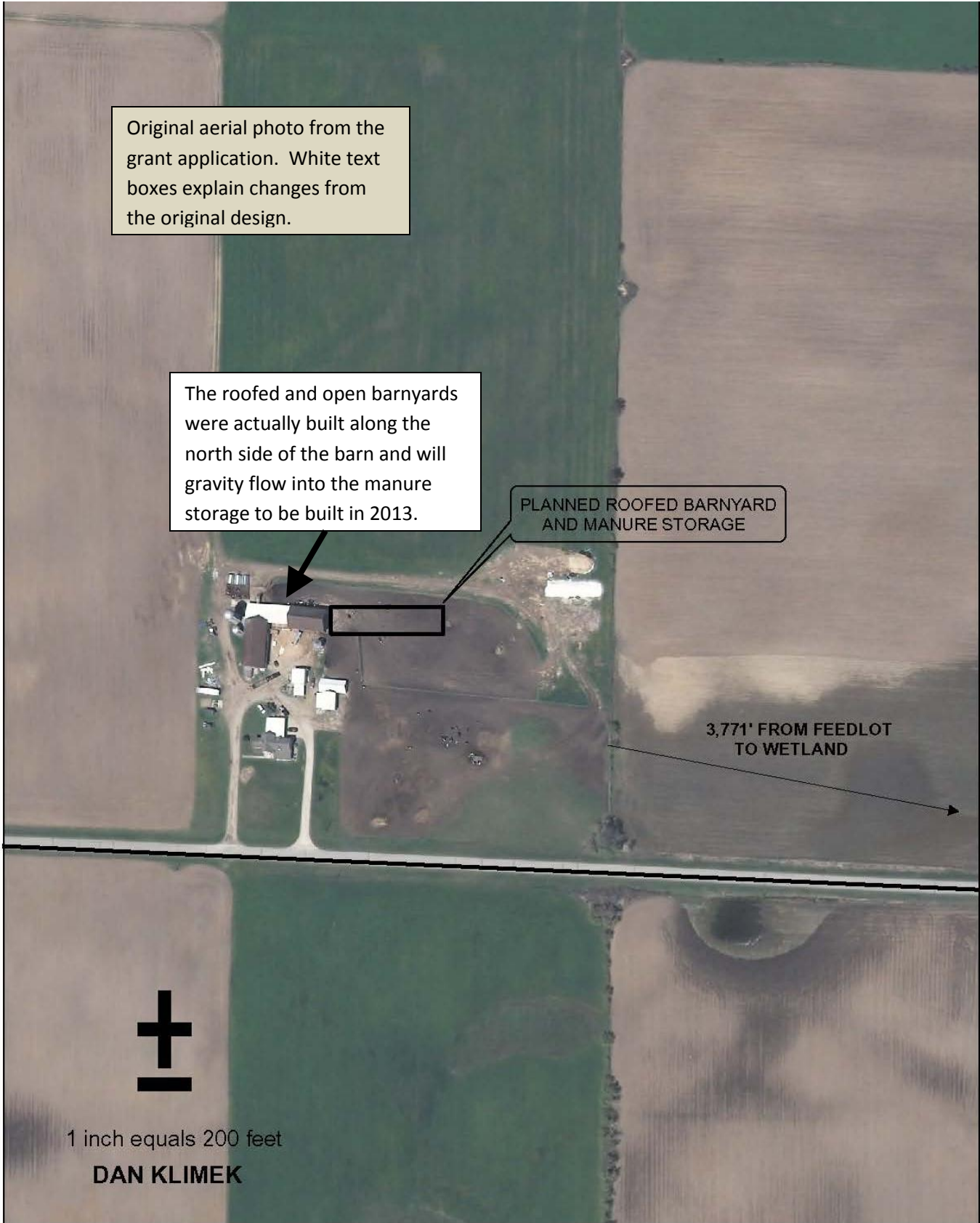
The roofed and open barnyards were actually built along the north side of the barn and will gravity flow into the manure storage to be built in 2013.

PLANNED ROOFED BARNYARD AND MANURE STORAGE

3,771' FROM FEEDLOT TO WETLAND



1 inch equals 200 feet
DAN KLIMEK





**Roofed
Barnyard Slab**



Completed Roofed Barnyard and Barnyard Control System, both are sloped to gravity flow into the manure storage facility.

