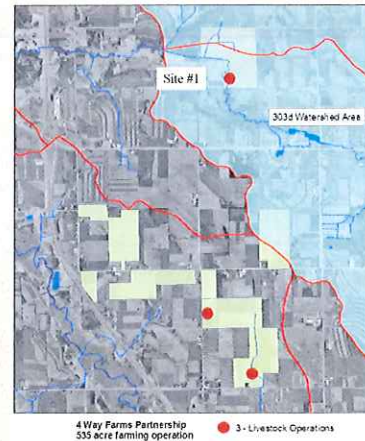


TARGETED RUNOFF MANAGEMENT PROGRAM

Grant No. TRC-UR13-67000-N

Project: 4-WAY FARMS

Presented by : BLAINE DELZER
Washington County
Planning and Parks Department
Land and Water Conservation Division



Site #1

Kohlsville River -
Livestock Operation

2004 Aerial Photo





In 2002, we referred to this site as the worst polluting livestock operation in Washington County.

Planning Considerations

Zoning

Management

Project Cost



4 Way Farms Partnership
555 acre farming operation

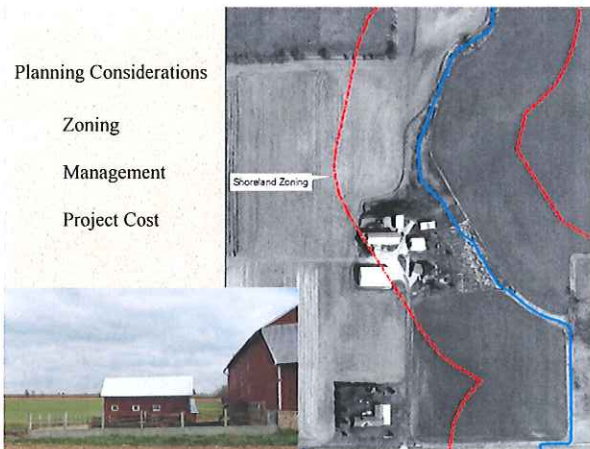
● 3+ Livestock Operations

Site #2

Unnamed Tributary to the
East Branch of Rock River -
Livestock Operation

2004 Aerial Photo





Targeted Runoff Management Grant Submitted application in April 2003

TOTAL GRANT AMOUNT = \$149,950.00

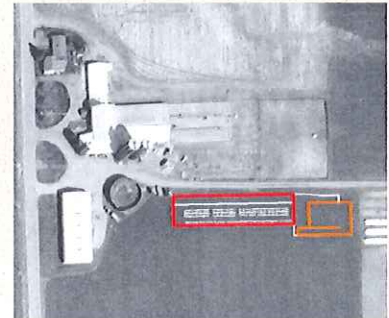
Grant application included:

Cost Shared Items:

- Relocation and abandonment for both livestock operations.
- Riparian Buffers for the pasture areas (restrictive covenants).
- Critical Area Seeding of pasture areas
- Manure Storage Facility for new confinement operation

Non Cost Shared Items:

- "T" Conservation Plan
- 590 Nutrient Management Plan



COST SHARE SUMMARY:

Relocation of an Animal Feeding Operation: can reimburse 70% of the cost for livestock buildings and associated facilities needed to maintain the transferred livestock at the new site as long as it does not exceed the appraised value of the buildings and associated facilities at the current site.

Site #1: Based on an appraisal this livestock facility was valued at \$112,078.

Site #2: The cost of constructing a roof over the feedlot was estimated at \$45,000. The landowner opted for abandonment and accepted seventy percent or \$31,500 to be used towards the cost of relocation

A new total confinement building was estimated to cost \$216,000

The landowner decided to construct the new freestall building 10% larger than what was needed. The final cost of the new building = \$312,867.24.

Or, \$282,817.60 proportioned down to current animal numbers.

COST SHARE SUMMARY:

Riparian Buffer and Critical Area Stabilization: were cost shared at rates specified in NR 154, equaling a total of \$5,130.

A Manure Storage Facility: was also installed and cost shared as part of the relocation project. The total cost of this facility was \$92,335.56. Since the grant was capped at the applied amount only 15.5% of this facility was actually cost shared.

In Summary: The cost of this entire project exceeded \$410,000.

4 Way Farms Partnership were reimbursed \$149,950 (37%).



590 Nutrient Management Plan

In January of 2003 Terry Breuer of 4-Way Farms attended our first Farmer Certification Workshop. Terry is now qualified to and has been writing the farms annual Nutrient Management Plan.

In fact, Terry just completed taking his second round of soil tests last month.



Monitoring Data



2002 & 2003	2004
Temperature	Ammonium Nitrogen
Dissolved Oxygen	Nitrate Nitrogen
Conductivity	
pH	

