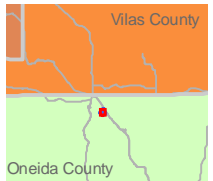
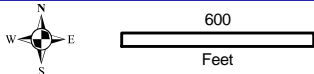




Extent of large map shown in red.



Extent of large map shown in red.

Legend

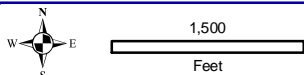
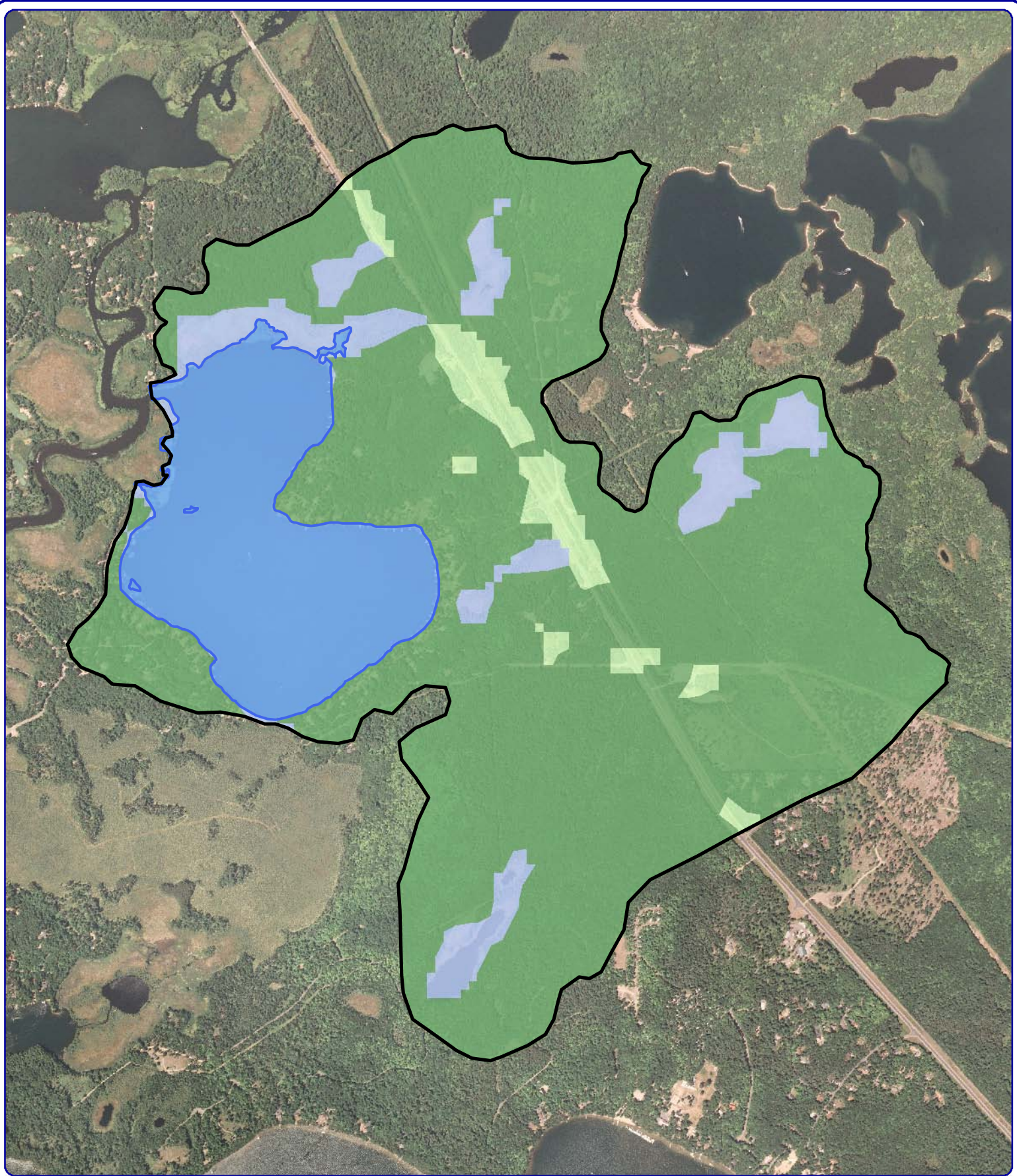
-  Water Quality Sampling Location
-  Project Boundaries

Map 1
Mid Lake
Oneida County, Wisconsin

**Project Boundaries
& WQ Sampling Locations**

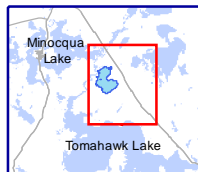
Onterra LLC
Lake Management Planning
135 South Broadway Suite C
De Pere, WI 54115
920.338.8860
www.onterra-eco.com

Source:
Roads & Hydro: WDNR
Map Date: June 10, 2010





Onterra LLC
 Lake Management Planning
 135 South Broadway Suite C
 De Pere, WI 54115
 920.338.8860
 www.onterra-eco.com

<BoI>Sources:</BoI>
 Watershed: WDNR & Onterra
 Landcover: WISCLAND
 Orthophotography: NAIP, 2005
 Map Date: June 10, 2010

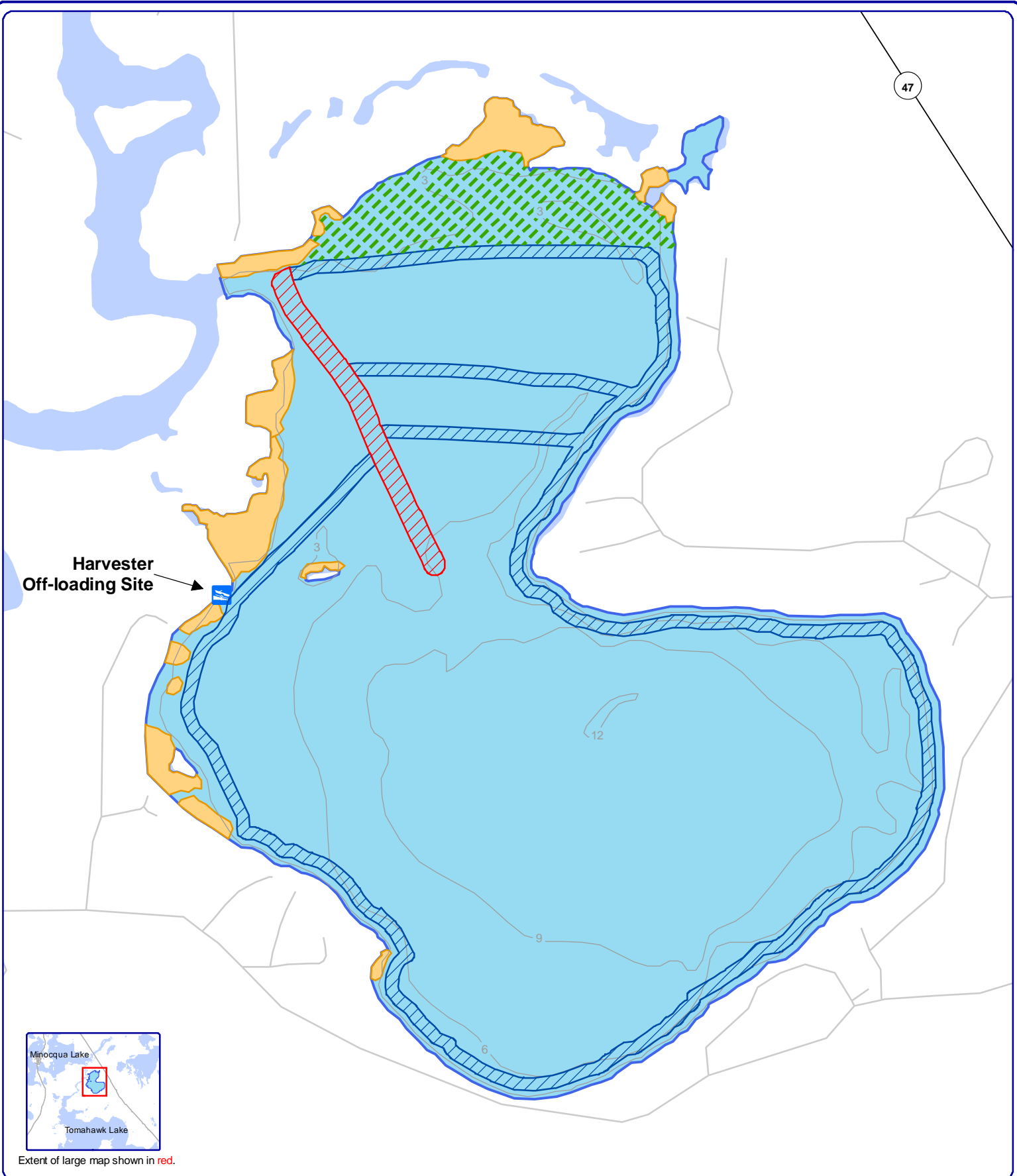


Extent of large map shown in red.

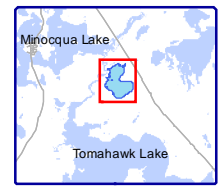
Legend

-  Watershed Boundary
- Land Cover Types**
-  Pasture/Grass
-  Forest
-  Open Water
-  Wetland

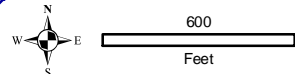
Map 2
 Mid Lake
 Oneida County, Wisconsin
**Watershed and
 Land Cover Types**



**Harvester
Off-loading Site**



Extent of large map shown in red.



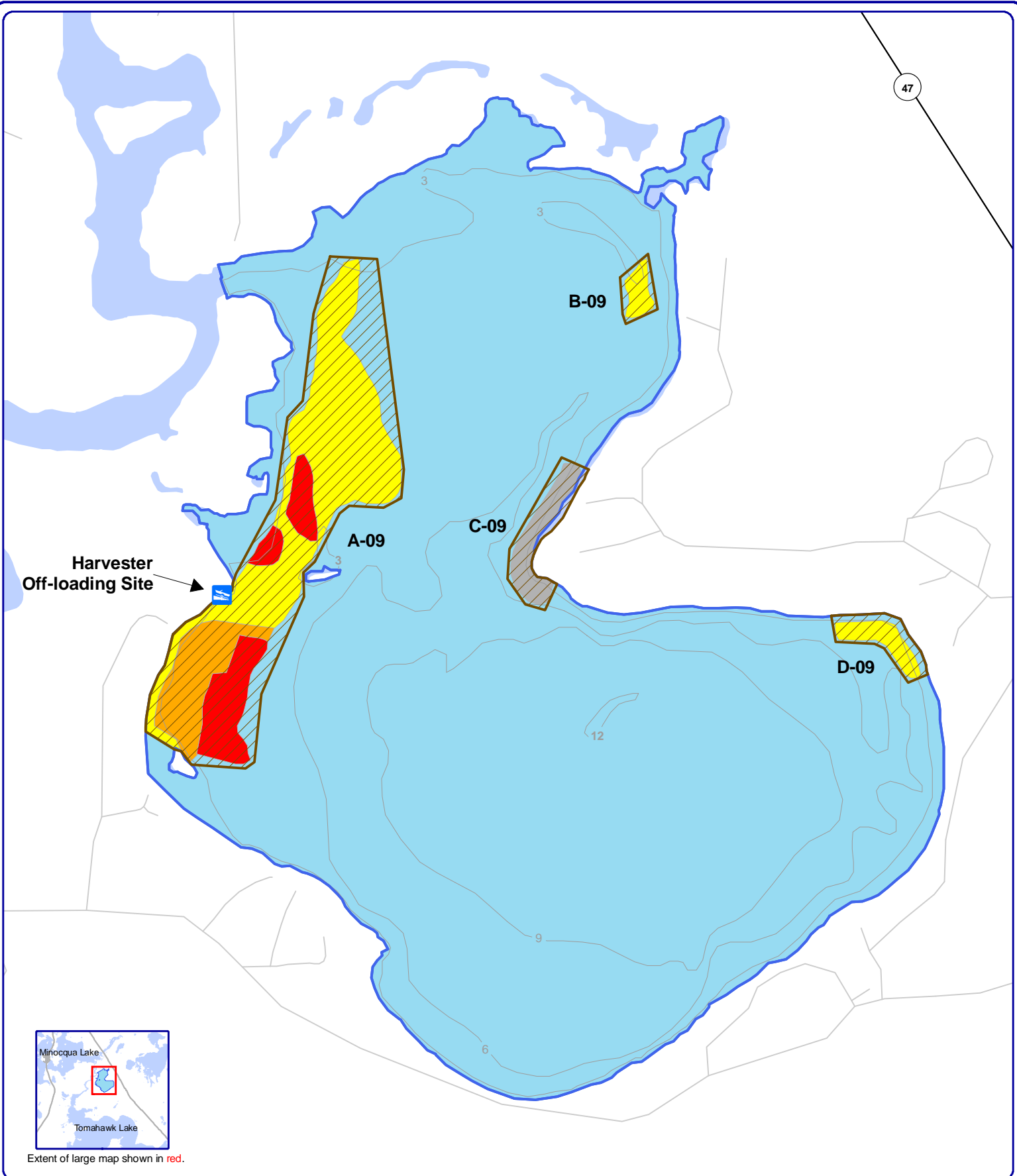
Onterra LLC
 Lake Management Planning
 135 South Broadway Suite C
 De Pere, WI 54115
 920.338.8860
 www.onterra-eco.com

Sources:
 Aquatic Plant Survey: Onterra, 2008
 Roads and Hydro: WDNR
 Map Date: November 20, 2009
 Harvest_ImplementationPlan\Map1_Mid_HarvestPlan.mxd

Legend

- Mechanical Harvest Areas**
- 100-ft lane (~ 3.5 acres)
 - 60-ft lane (~ 20.7 acres)
 - Open Water Conservation Area (~ 13 acres)
 - Native Plant Community (no harvest area, ~ 9.4 acres)

Map 4
Mid Lake
 Onieda County, Wisconsin
**Mechanical
 Harvesting Plan**



Harvester
Off-loading Site

A-09

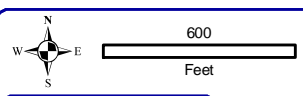
B-09

C-09

D-09



Extent of large map shown in red.

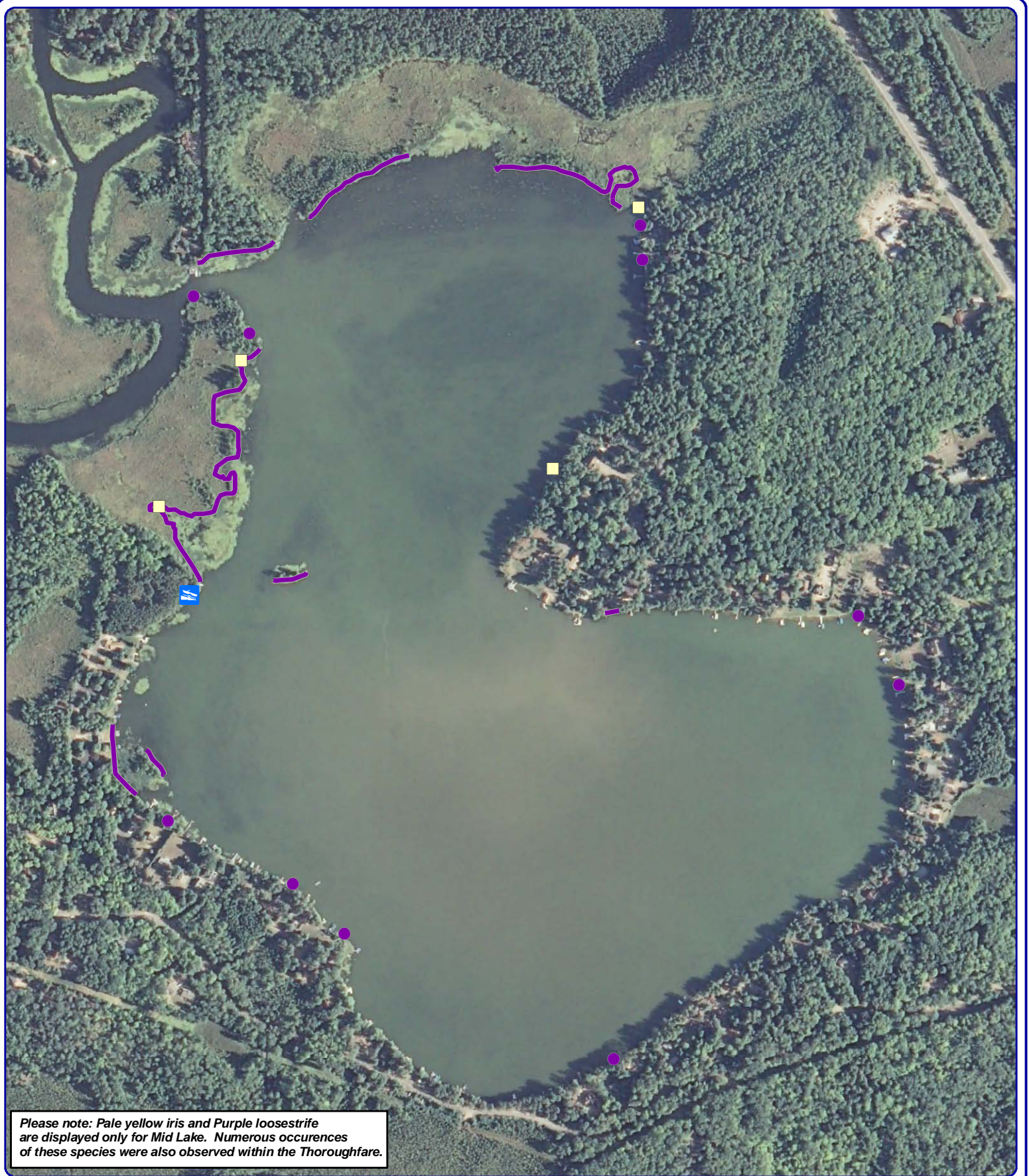


Onterra LLC
Lake Management Planning
135 South Broadway Suite C
De Pere, WI 54115
920.338.8860
www.onterra-eco.com

Sources:
Aquatic Plant Survey: Onterra, 2008
Roads and Hydro: WDNR
Map Date: November 20, 2009
Harvest_ImplementationPlan\Map2_Mid_CLP_HarvestPlan.mxd

- Legend**
- CLP Harvest Areas (~ 28.7 acres)
 - 2008 CLP Densities**
 - Highly Scattered (*none found*)
 - Scattered
 - Dominant
 - Highly Dominant
 - Surface Matting

Map 5
Mid Lake
Onieda County, Wisconsin
**2008 CLP Densities
and 2009 Harvest Areas**



Please note: Pale yellow iris and Purple loosestrife are displayed only for Mid Lake. Numerous occurrences of these species were also observed within the Thoroughfare.



Onterra LLC
 Lake Management Planning
 135 South Broadway Suite C
 De Pere, WI 54115
 920.338.8860
 www.onterra-eco.com

Sources:
 Aquatic Plant Survey: Onterra, 2008
 Roads and Hydro: WDNR
 Map Date: June 4, 2010

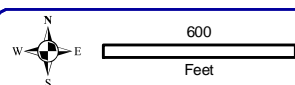
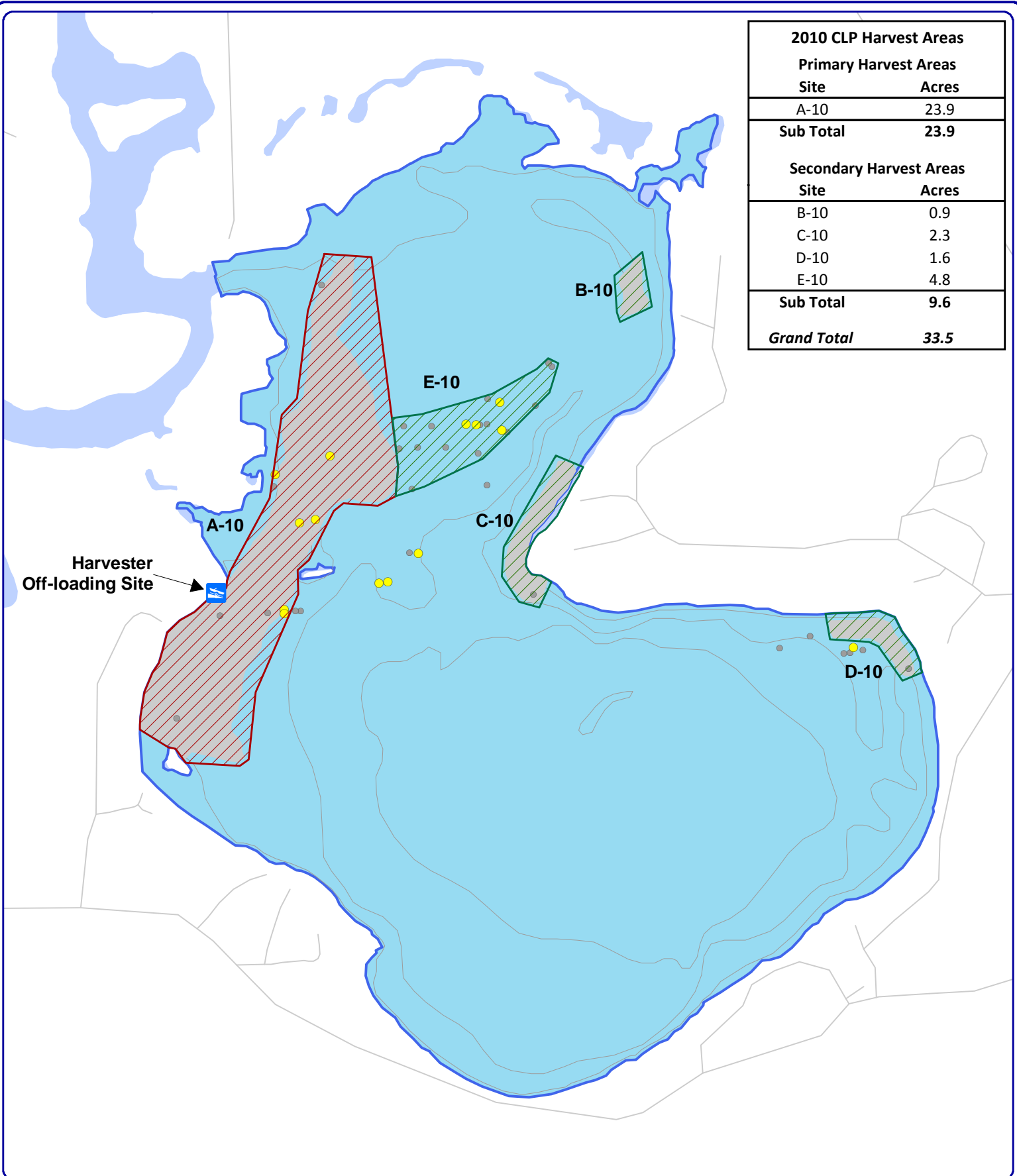


Extent of large map shown in red.

- Legend**
- Pale Yellow Iris**
 - Single or several plants
 - Purple Loosestrife**
 - Single or several plants
 - Shoreline colony

Map 6
 Mid Lake
 Onieda County, Wisconsin
**2008 Pale Yellow Iris and
 Purple Loosestrife Locations**

2010 CLP Harvest Areas	
Primary Harvest Areas	
Site	Acres
A-10	23.9
Sub Total	23.9
Secondary Harvest Areas	
Site	Acres
B-10	0.9
C-10	2.3
D-10	1.6
E-10	4.8
Sub Total	9.6
Grand Total	33.5



Onterra LLC
 Lake Management Planning
 135 South Broadway Suite C
 De Pere, WI 54115
 920.338.8860
 www.onterra-eco.com

Sources:
 Aquatic Plant Survey: Onterra, 2010
 Roads and Hydro: WDNR
 Map Date: June 9, 2010



Extent of large map shown in red.

- Legend**
- 2008 CLP Findings
 - 2009 CLP Additional Survey Findings**
 - Single or Few Plants
 - Clumps of Plants
 - Primary Harvest Area (23.9 acres)
 - Secondary Harvest Area (9.6 acres)

Map 7
 Mid Lake
 Onieda County, Wisconsin
**2010 Early-season
 CLP Harvest Areas**

