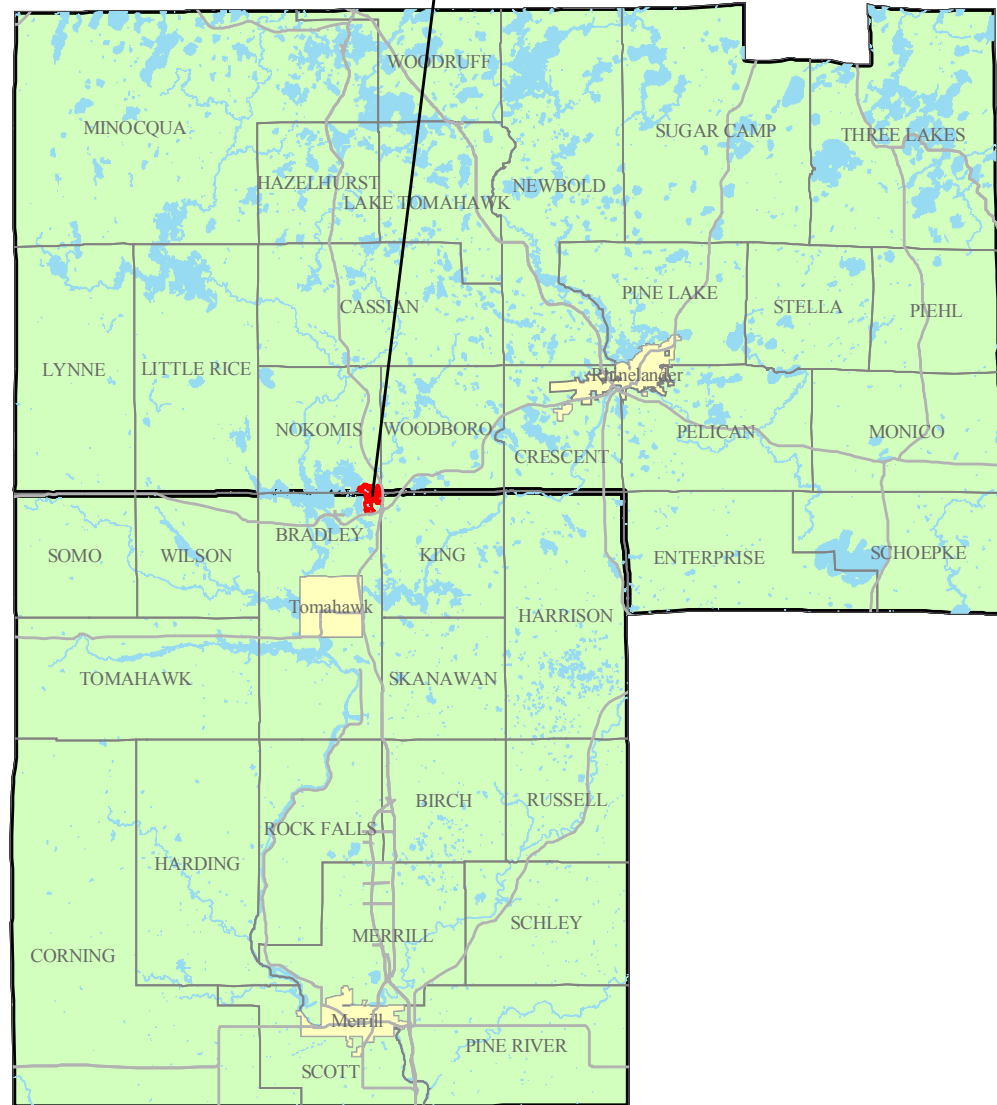




State of Wisconsin

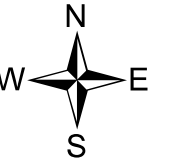
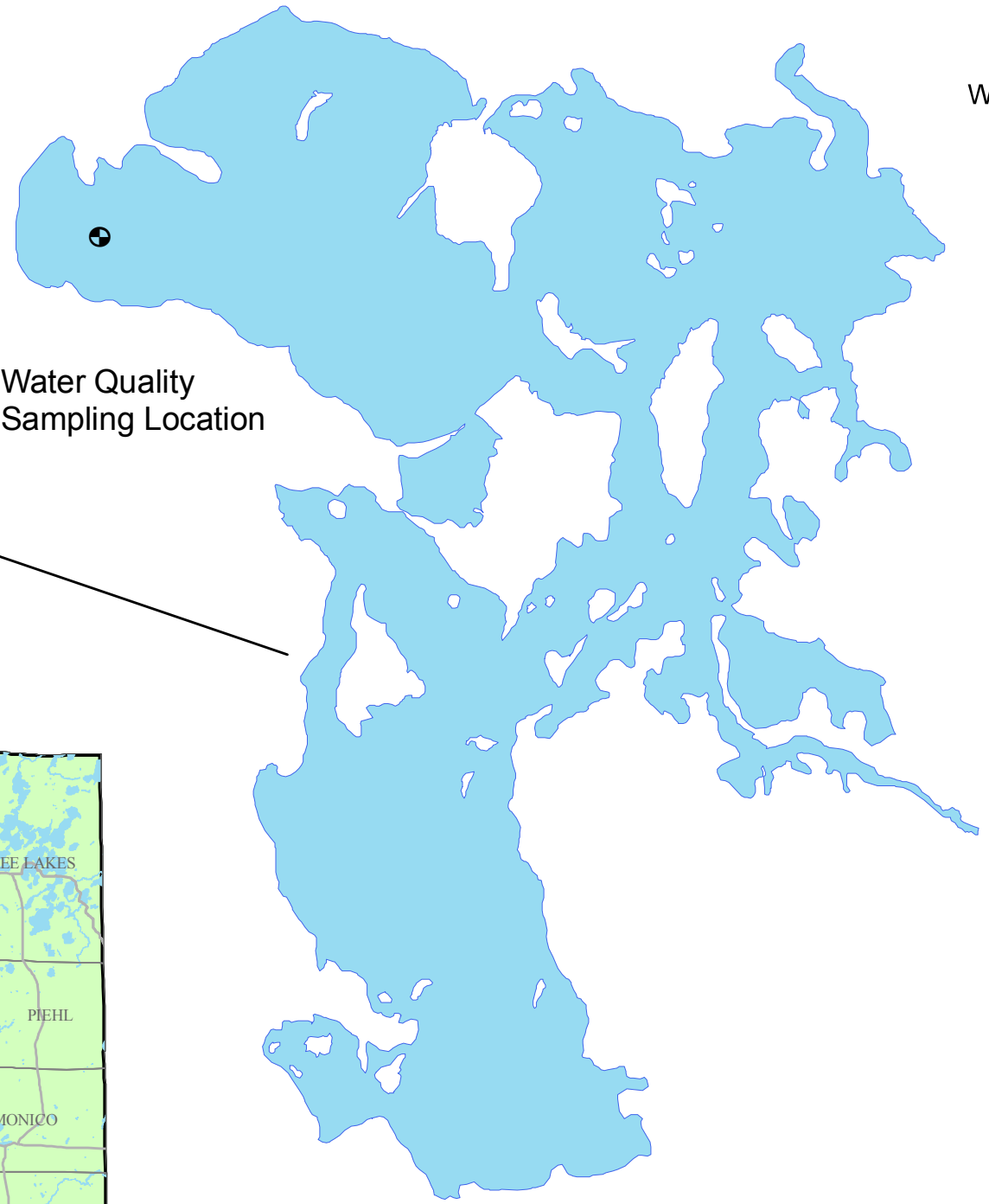
Oneida  
County

Lincoln  
County



Bridge  
Lake

Water Quality  
Sampling Location



Map 1  
**Bridge Lake**  
Oneida-Lincoln County  
**Project Location &  
Water Quality  
Sampling Location**

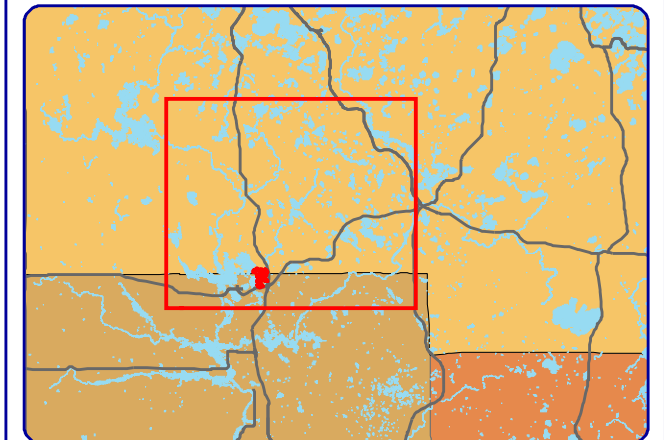


# Map 2

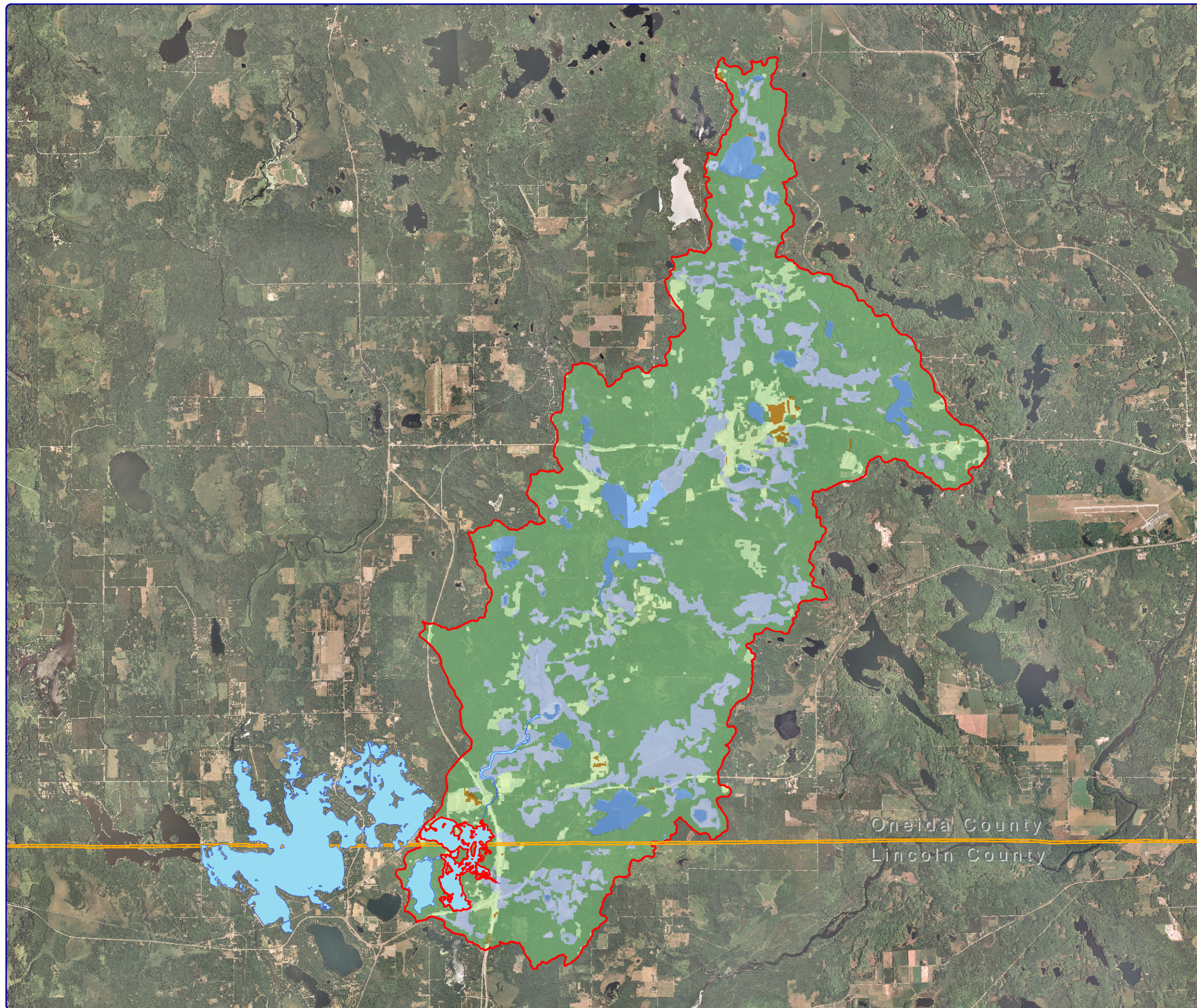
## Bridge Lake

Lincoln & Oneida Counties, Wisconsin

### Watershed and Land Cover Types



Extent of large map shown in red.



#### Legend

Watershed Boundary

#### Land Cover Types

Row Crop

Pasture/Grass

Forest

Open Water

Wetland



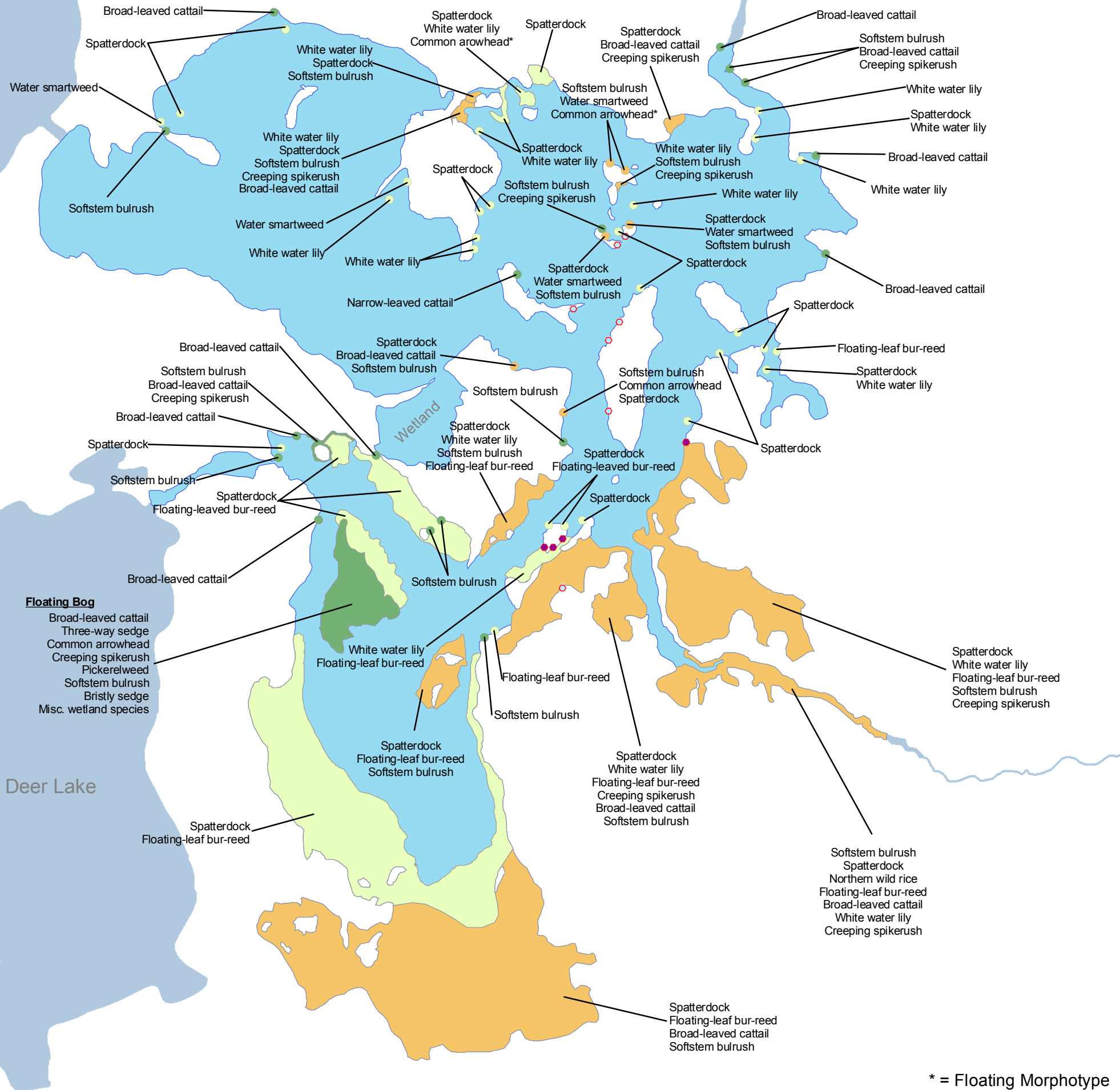
8,000  
  
Feet

Sources:  
Watershed: WDNR & Onterra  
Landcover: WISCLAND  
Roads & Hydro: WDNR  
Orthophotography: NAIP, 2005  
Map Date: October 25, 2007

**Onterra LLC** 135 South Broadway Suite C  
Lake Management Planning De Pere, WI 54115  
920.338.8860  
www.onterra-eco.com



Lake Nokomis



**Floating Bog**  
 Broad-leaved cattail  
 Three-way sedge  
 Common arrowhead  
 Creeping spikerush  
 Pickerelweed  
 Softstem bulrush  
 Bristly sedge  
 Misc. wetland species

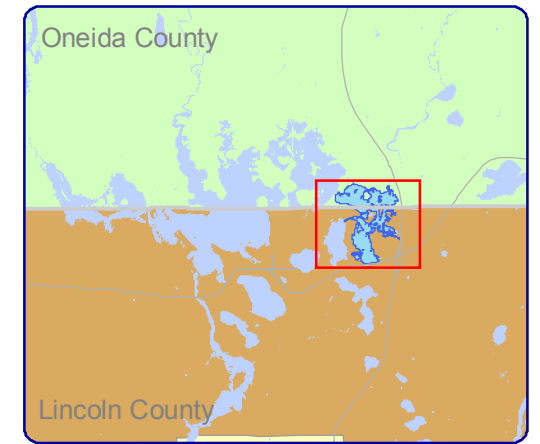
Deer Lake

\* = Floating Morphotype

# Map 3 Bridge Lake

Oneida - Lincoln County, Wisconsin

## Aquatic Plant Communities



Extent of large map shown in red.

### Legend

#### Exotic Plant Communities

- Note: Eurasian water milfoil locations are displayed on a separate map.*
- Purple Loosestrife
  - Common Reed

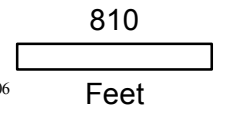
#### Small Plant Communities

- Emergent
- Floating-leaf
- Mixed Floating-leaf & Emergent

#### Large Plant Communities

- Emergent
- Floating-leaf
- Mixed Floating-leaf & Emergent
- Public Boat Landing

Sources:  
 Hydro: WDNR  
 Aquatic Plant Study: Onterra, 2006  
 Map Date: November 30, 2006



**Onterra LLC** 135 South Broadway Suite C  
 Lake Management Planning De Pere, WI 54115  
 920.338.8860  
 www.onterra-eco.com

Lake Nokomis

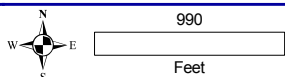
Oneida County  
Lincoln County

Deer Lake

Site	Acres	Ave z (ft)
A-07	15.4	8
B-07	5.0	7
C-07	0.4	6
D-07	2.9	7
E-07	0.1	8
F-07	0.4	7
G-07	0.1	5
H-07	0.2	6
I-07	0.2	6
J-07	0.2	6
K-07	0.2	6
L-07	0.1	6
<b>Total</b>	<b>25.2</b>	

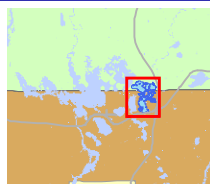
**Please Note:**

1. Entire area of lake used for fishing.
2. Proposed Treatment areas are used for all boating activities.



**Onterra LLC**  
Lake Management Planning  
135 South Broadway Suite C  
De Pere, WI 54115  
920.338.8860  
www.onterra-eco.com

Sources:  
Roads & Hydro: WDNR  
Point-intercept Survey: WDNR ISS, 2006  
Aquatic Plants: Onterra, 2006  
Map date: February 14, 2007



Extent of large map shown in red.

**Legend**

- Proposed EWM Treatment Area (25.2 Acres)
- EWM Present in P-I Locations (N=17)

**EWM Locations (August 2006)**

- Highly scattered
- Scattered
- Density = 1
- Density = 2
- Density = 3

**Map 4**

**Bridge Lake**  
Oneida - Lincoln Counties, WI  
**Proposed 2007  
EWM Treatment**



Lake Nokomis

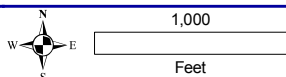
Oneida County  
Lincoln County

Deer Lake

Site	Acres	Ave z (ft)
A-07	15.4	8
B-07	5.0	7
C-07	Dropped	
D-07	2.9	7
E-07	0.1	8
F-07	Dropped	
G-07	Dropped	
H-07	Dropped	
I-07	Dropped	
J-07	Dropped	
K-07	0.2	6
L-07	0.1	6
M-07	1.4	6
<b>Total</b>	<b>25.1</b>	

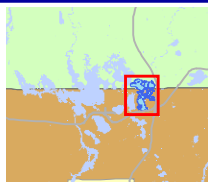
**Please Note:**

1. Entire area of lake used for fishing.
2. Proposed Treatment areas are used for all boating activities.



**Onterra LLC**  
Lake Management Planning  
135 South Broadway Suite C  
De Pere, WI 54115  
920.338.8860  
www.onterra-eco.com

Sources:  
Roads & Hydro: WDNR  
Aquatic Plants: Onterra, 2006 & 2007  
Map date: May 6, 2007



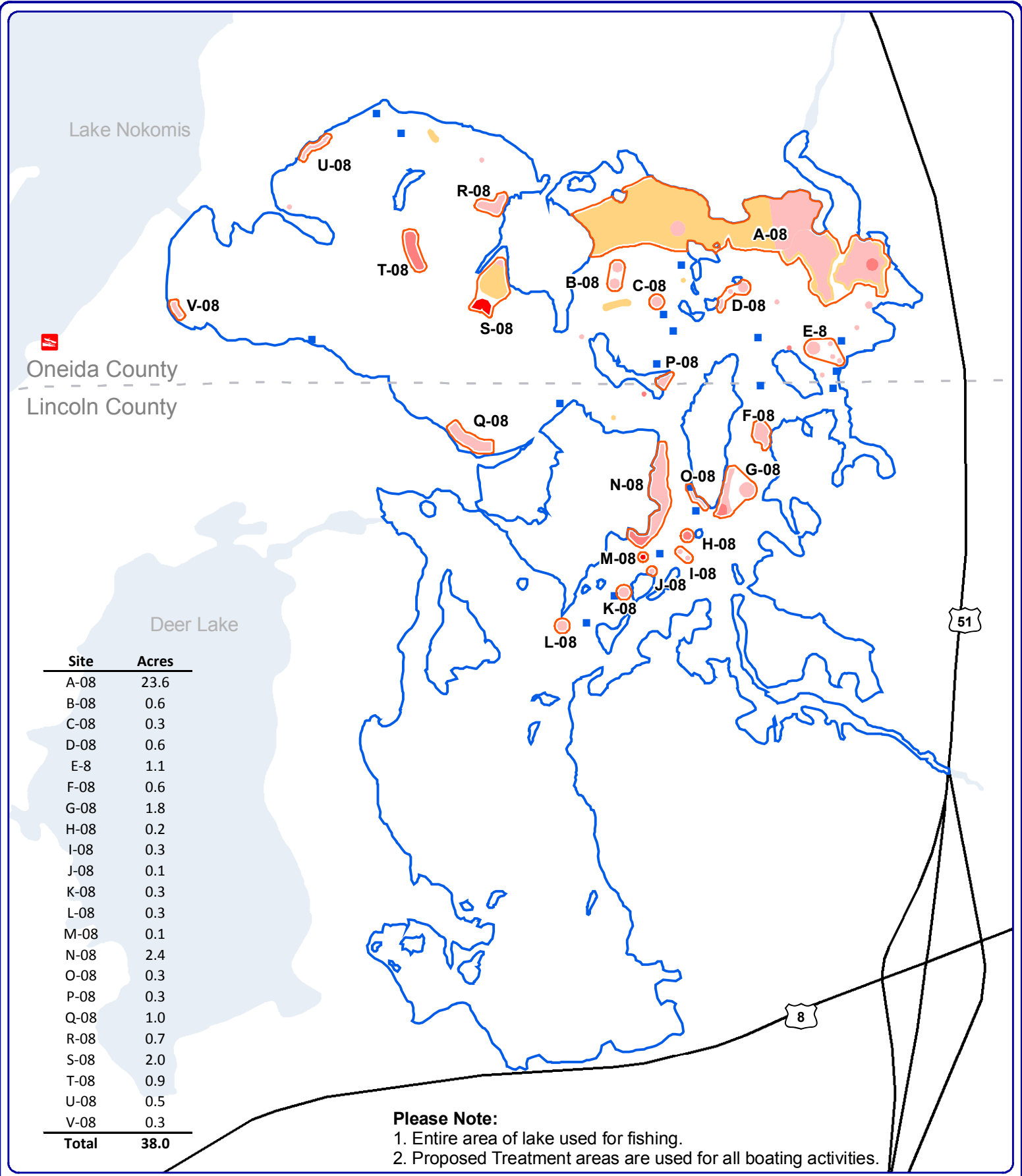
Extent of large map shown in red.

**Legend**

- Final 2007 EWM Treatment Area (25.1 Acres)
- Point-intercept Sample Location

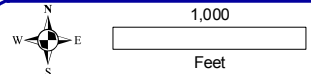
**Map 5**  
**Bridge Lake**  
Oneida - Lincoln Counties, WI  
**Final 2007**  
**EWM Treatment**





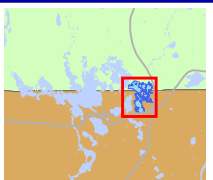
Site	Acres
A-08	23.6
B-08	0.6
C-08	0.3
D-08	0.6
E-8	1.1
F-08	0.6
G-08	1.8
H-08	0.2
I-08	0.3
J-08	0.1
K-08	0.3
L-08	0.3
M-08	0.1
N-08	2.4
O-08	0.3
P-08	0.3
Q-08	1.0
R-08	0.7
S-08	2.0
T-08	0.9
U-08	0.5
V-08	0.3
<b>Total</b>	<b>38.0</b>

**Please Note:**  
 1. Entire area of lake used for fishing.  
 2. Proposed Treatment areas are used for all boating activities.



**Onterra LLC**  
 Lake Management Planning  
 135 South Broadway Suite C  
 De Pere, WI 54115  
 920.338.8860  
 www.onterra-eco.com

Sources:  
 Roads & Hydro: WDNR  
 Aquatic Plants: Onterra, 2006 & 2007  
 Map date: May 6, 2007



Extent of large map shown in red.

**Legend**

- Preliminary Proposed 2008 Treatment Area (38.0 Acres)
- Scattered
- Density = 1
- Density = 2
- Density = 3
- Clumps of EWM

**Map 6**  
**Bridge Lake**  
 Oneida - Lincoln Counties, WI  
**Preliminary Proposed**  
**2008 Treatment Areas**